

OSU

*Counseling Academic
Unit Master's Theses*

1929-1959

Bibliographic Series Number 28

July 2013

Oregon State University

Corvallis, Oregon

OSU

Counseling Academic Unit Master's Theses

1929-1959

By

Cass Dykeman, PhD, NCC, NCSC, MAC
*Counseling Academic Unit
College of Education
Oregon State University*

An index of master's theses
completed within OSU's Counseling Academic
Unit and accepted by the Graduate School,
Oregon State University

Bibliographic Series Number 28
2013

Acknowledgements

During the mid 20th Century, OSU students in counseling produced seventy master's theses. Thanks to the work of Patricia Black and her team at the *OSU Libraries*, this historically significant corpus of work is now available to all.

Table of Contents

	<i>page</i>
I. <u>Background</u>	5
II. <u>Scope of Database</u>	7
III. <u>Database Construction</u>	8
IV. <u>Database of Theses</u>	9
V. <u>Index of Major Professors</u>	17
VI. <u>Photo of Riley Clinton</u>	18
VII. <u>Photo of Robert Reichart</u>	19
VIII. <u>Photo of Drs. Zeran and Sherburne</u>	20
IX. <u>Photo of Carl Salser</u>	21
X. <u>Photo of “Lazzie” Laslett</u>	22
XI. <u>Photo of Stanley Williamson</u>	23
XII. <u>Photo of Ernest Warrington</u>	24
XIII. <u>Photo of James Jewell</u>	25
XIV. <u>References</u>	26

I. Background

The Counseling Academic Unit (CAU) of the College of Education (CoE) at Oregon State University (OSU) has provided counselor training since 1916 (Oregon Agricultural College, 1916). This date was only five years after Harvard University offered the first counseling course in the nation (Savickas, 2009). OSU is tied with Columbia University for having the 2nd oldest continuous counseling program in the nation.

The CAU awarded its first master's degree in 1929 (Love, 1929). Between 1929 and 1959, CAU students produced seventy master's theses. With a shift to a non-thesis option for a master's degree in the late 1950s, CAU students ceased producing master's theses.

The CAU has offered graduate-level coursework in counseling through an off-campus site since 1937 (Oregon State System of Higher Education, 1936). The initial off-campus coursework was offered via OUS' Portland Extension Center and taught at Lincoln High School. Nineteen forty-one marked the first year an OSU counseling master's degree student graduated through the Portland Extension Center. Since that point, the CAU variously has offered a counseling master's degree in Astoria, Bend, Pendleton, Portland, and Salem.

In 2013, the CAU transitioned its off-campus counseling master's degree program back to a hybrid instructional format. The CAU has employed a hybrid instructional format at various times since 1937 (General Extension Division, 1937). At first this format combined (a) in-person instruction and (b) by mail instruction. Today, the CAU's hybrid model includes a mixture of (a) in-person instruction that occurs on two weekends of the

quarter at an off-campus site, (b) weekly synchronous web instruction via Adobe Connect, and (c) weekly asynchronous web instruction via Blackboard.

II. Scope of Database

This bibliographic database contains all master's theses completed by students within OSU's CAU. This listing includes all theses for the MS, MA, and EdM degrees.

The title for the major in counseling during the time period of this database was Education. Counseling students with this Education major also had a counseling area of concentration. This area of concentration was variously titled: *Vocational Guidance*, *Guidance*, or *Guidance & Personnel Work*. The area of concentration did not appear on the signature page of these theses.

III. Database Construction

Constructing a database with a 30-year time frame that ended in 1959 required some editorial decisions. To start, I consulted the theses indices put out by the OSU Libraries. These indices were for 1932-1942 (Oregon State System Of Higher Education, 1946), and 1943-1959 (Waldron & Followell, 1960). These indices were constructed by topic rather than by academic unit. Thus, once the list of potential counseling theses was compiled, some editorial decisions had to be made. Some theses listed had a counseling component but the main focus was on another topic (see Martinson, 1949). In these cases, the academic appointment of the major professor was a big help in determining if the thesis had emerged from the CAU or from another unit.

IV. Database of Master's Theses 1929-1959

Last Name	First Name	Degree Year	Handle	Degree	Dissertation Title	Major Professor
Love	Leston	1929	http://hdl.handle.net/1957/38972	MS	The use of extra-curricular activities as guidance: a proposed program	Jewell
Adams	Russel	1929	http://hdl.handle.net/1957/39579	MS	Vocational guidance of farm boys in the Willamette Valley Oregon	Salser
Hood	Winona	1932	http://hdl.handle.net/1957/38973	MS	The development and present status of vocational guidance in the high schools of Oregon	Salser
Sandwick	Galena	1932	http://hdl.handle.net/1957/39027	MS	Guiding women in the choice of vocational opportunities	Salser
Bowersox	John	1933	http://hdl.handle.net/1957/39437	MS	An evaluation of a guidance program in a California high school of four hundred fifty students	Salser
Spence	Wilma	1937	http://hdl.handle.net/1957/39028	MS	A survey of guidance in the secondary schools of Oregon: A suggested course	Clinton
Laslett	Leota	1938	http://hdl.handle.net/1957/39440	MA	The educational fates of college entrants in the two lowest American council on education test deciles	Laslett
Welch	Frances	1939	http://hdl.handle.net/1957/39029	EdM	Adjustment problems of girls in a special high school	Clinton

Seely	Claire	1940	http://hdl.handle.net/1957/39446	MS	The problems of one hundred eleventh grade pupils	Laslett
Beck	Ruth	1941	http://hdl.handle.net/1957/39578	MA	A study of guidance activities as conducted through the Dean of women's office of Oregon State College	Parr
Edwards	Louis	1941	http://hdl.handle.net/1957/38971	MS	A study of the scholastic fates of 231 transfer students in Oregon State College	Laslett
Powell	Lee	1941	http://hdl.handle.net/1957/39030	MS	A survey of the personality traits of the pupils of a small high school	Laslett
Richards	Iva	1941	http://hdl.handle.net/1957/39031	EdM	The dean of girls in an Oregon high school of seven hundred students	Salser
Garber	Richard	1942	http://hdl.handle.net/1957/39032	EdM	Reactions to curricular offerings of students who withdrew from Roosevelt high school: 1934-1938	Salser
Highland	Richard	1942	http://hdl.handle.net/1957/39026	MS	A study of student leadership from the standpoint of educational psychology	Laslett
McLean	Rhetta	1942	http://hdl.handle.net/1957/38970	EdM	Factors which contribute to the maladjustment of the boys of RL Sabin high school	Salser
Phillips	John	1942	http://hdl.handle.net/1957/39033	EdM	A study of methods of obtaining basic records used in high school counseling	Salser

Smith	Donald	1942	http://hdl.handle.net/1957/39034	EdM	A study of boys of the Robert L Sabin high school	Clinton
Thomas	Ida	1942	http://hdl.handle.net/1957/39023	MS	Techniques used at the Oregon State School for the Blind in the adjustment of visually handicapped children	Salser
Votaw	Marjorie	1942	http://hdl.handle.net/1957/39024	EdM	A study of the home room as an aspect of guidance in Oregon high school	Clinton
Johnson	Lyle	1943	http://hdl.handle.net/1957/39035	MS	Factors associated with dishonesty in junior high school students	Warrington
Mann	Isabelle	1943	http://hdl.handle.net/1957/39065	EdM	Changes in vocational interest of Oregon City high school students	Salser
McMillan	Alva	1943	http://hdl.handle.net/1957/39580	MS	A proposed vocational guidance program for the high school of commerce San Francisco	Salser
Noel	Helen	1944	http://hdl.handle.net/1957/39067	MS	The work of the deans of women in the California junior colleges	Clinton
Chown	Eleanor	1946	http://hdl.handle.net/1957/39103	MS	A preliminary study of a counseling program for veterans in the Portland area	Salser
Freeman	Alice	1946	http://hdl.handle.net/1957/39125	MS	Evaluation of the counseling program of the Hazen foundation Pacific area conferences	Warrington

Mauro	Marie	1947	http://hdl.handle.net/1957/39127	EdM	Testing of veterans at the Portland guidance and counseling center	Unknown
Thaw	Richard	1947	http://hdl.handle.net/1957/39140	EdM	The counselor and remedial reading instruction	Laslett
Gabbert	Donald	1948	http://hdl.handle.net/1957/39655	EdM	Individual differences in intelligence grade achievement and home background from the 4th grade to the 8th grade in a Portland grade school	Laslett
Johnson	Leone	1948	http://hdl.handle.net/1957/39759	MS	An Analysis of Religious Activities at Oregon State College	Warrington
Matson	Henry	1948	http://hdl.handle.net/1957/39758	EdM	The guidance situation in the Portland secondary schools	Shurburne
Price	Kenneth	1948	http://hdl.handle.net/1957/39572	EdM	A guidance program for the schools of the blind	Warrington
Zacur	Charles	1948	http://hdl.handle.net/1957/39623	MS	The counseling services in the secondary schools of Oregon	Salser
Baldock	Edgar	1949	http://hdl.handle.net/1957/39516	EdM	A Study of Counseled Veteran Students Suspended from Oregon State College 1946-1947	Clinton
Brady	Beth	1949	http://hdl.handle.net/1957/39624	MA	Some Fears of College Students	Laslett
Bullard	Maurice	1949	http://hdl.handle.net/1957/39625	MS	An approach to a technique in vocational guidance	Clinton

Carrillo	Lawrence	1949	http://hdl.handle.net/1957/39626	MS	The Use of a "Caution Factor" to Increase the Predictive Value of the American Council on Education Psychological Examination	Reichart
Chase	Leslie	1949	http://hdl.handle.net/1957/39520	EdM	A Critical Examination of the Organization for Handling Juvenile Delinquents in the Portland Public Schools	Clinton
Chase	Mildred	1949	http://hdl.handle.net/1957/39574	MS	Case Studies of Forty Exceptional Children	Laslett
Cunliffe	Gerald	1949	http://hdl.handle.net/1957/39524	EdM	The Personal Problems of Corvallis High School Students as a Basis for Curriculum Improvement	Zeran
Herboth	May	1949	http://hdl.handle.net/1957/39760	EdM	Organization of a guidance program for the junior high school	Zeran
McFadden	Gilbert	1949	http://hdl.handle.net/1957/39514	MS	The Development of Methods of Study Courses in State Colleges and Universities	Laslett
Bradshaw	Archie	1950	http://hdl.handle.net/1957/39628	EdM	Junior college guidance through class in occupations	Clinton
Bradshaw	Archie	1950	http://hdl.handle.net/1957/39630	EdM	A study of service club panels in a guidance program	Clinton

Crews	Graydon	1950	http://hdl.handle.net/1957/39506	MS	Survey of the need in public schools for guidance services originating at Oregon State College	Zeran
Edwards	Hugh	1950	http://hdl.handle.net/1957/39436	EdM	The place of the career day program in the guidance	Zeran
Forrest	Howard	1950	http://hdl.handle.net/1957/39650	EdM	A Follow-Up Study of Corvallis High School-Leavers	Zeran
Goertzen	Stanley	1950	http://hdl.handle.net/1957/39649	EdM	College counseling in theory and in practice in the small colleges and universities of the Inland Empire	Zeran
Keenan	Mary	1950	http://hdl.handle.net/1957/39767	EdM	Adjustment Problems of Albany High School Students as Determined by the Moony Test	Zeran
Pierson	Leroy	1950	http://hdl.handle.net/1957/39763	EdM	Guidance needs in the public high schools of Portland Oregon	Zeran
Skien	Marie	1950	http://hdl.handle.net/1957/39652	EdM	Social Adjustment Problems of Some Eighth Grade Pupils	Zeran
State	Mary	1950	http://hdl.handle.net/1957/39653	EdM	An Approach to Family Relationships Through Fostering Student-Parent Understanding	Zeran
Watkins	Norman	1950	http://hdl.handle.net/1957/39654	MS	Guidance practices in Utah secondary schools	Zeran

Emigh	Bill	1951	http://hdl.handle.net/1957/39644	EdM	Adjustment Problems of a Group of Seventh and Eighth Grade Pupils	Zeran
Goheen	Edna	1951	http://hdl.handle.net/1957/39660	EdM	The Fears of 200 High School Pupils	Laslett
Harvey	Morris	1951	http://hdl.handle.net/1957/39658	MS	The effect of counseling on the scholastic performance of a selected group of college freshman	Reichart
Wade	Imogene	1951	http://hdl.handle.net/1957/39576	EdM	Adjustment Problems of Some Junior High School Students	Zeran
Young	Mary	1951	http://hdl.handle.net/1957/39646	MS	Group Activities to Help Children in Their Adjustments	Zeran
Alkire	Leota	1952	http://hdl.handle.net/1957/39568	MS	Personnel Organizations and Services in Small Colleges in the North-Central Area	Clinton
Feldman	Cynthia	1952	http://hdl.handle.net/1957/39569	MA	A Comparison of Three Test Scores Used as Predictors of College Success	Reichart
Wells	Arlen	1952	http://hdl.handle.net/1957/39771	MS	An elementary school guidance folder based upon opinions of selected Oregon teachers	Williamson
Zertanna	Robert	1952	http://hdl.handle.net/1957/39648	EdM	Adjustment Problems of Trades Apprentices as Indicated by the Mooney Problem Check List	Zeran

O'Connell	Forrest	1953	http://hdl.handle.net/1957/39570	EdM	Adjustment Problems of Technical Institute Students	Laslett
Wheeler	Lyle	1953	http://hdl.handle.net/1957/8788	EdM	The Adjustment Problems of High School Students in Astoria Oregon	Clinton
Aldridge	Athelstan	1954	http://hdl.handle.net/1957/39656	EdM	A history of the guidance program for schools of Alberta	Zeran
Hess	Ruth	1954	http://hdl.handle.net/1957/39632	EdM	Evaluation of the Y-Teen Club in Oregon High Schools	Zeran
Reed	Henry	1954	http://hdl.handle.net/1957/39645	EdM	Adjustment Problems of a Seventh Grade Class in an Elementary School	Zeran
Blackburn	Jessie	1955	http://hdl.handle.net/1957/39622	MS	The use of the General Aptitude Test Battery recorded interviews in vocational counseling	Zeran
Dowd	Charles	1955	http://hdl.handle.net/1957/39647	EdM	Orientation Services in Oregon Secondary Schools	Williamson
Hollister	Jack	1959	http://hdl.handle.net/1957/39775	MS	Rehabilitation Practices for Tuberculosis Patients at the Oregon State Hospital	Reichart

V. Index of Major Professors

Major Professor	Count
Clinton	12
Jewell	1
Laslett	12
Parr	1
Reichart	4
Salser	13
Shurburne	1
Unknown	1
Warrington	4
Williamson	2
Zeran	19

VI. Photo of Dr. Riley Clinton



Photo caption: Counselor educator and measurement specialist Dr. Clinton was a major professor for many counseling master's theses.

Source: "Courtesy Presidents Office Photographic Collection (P092:0976), Special Collections & Archives Research Center, Oregon State University Libraries."

VII. Photo of Dr. Robert Reichart

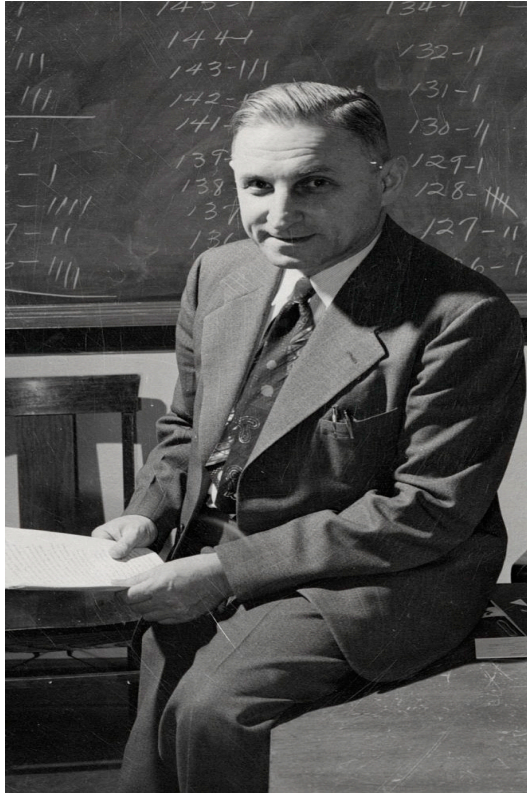


Photo caption: Dr. Robert R. Reichart in a classroom.

Dr. Reichart was a counselor educator and educational psychologist who served as major professor on a number of early counseling theses. He was also the founding director of the OSU Counseling Center.

Source: "Courtesy Harriet's Photographic Collection (P HC0441), Special Collections & Archives Research Center, Oregon State University Libraries."

VIII. Photo of Drs. Zeran & Sherburne



Photo caption: Drs. Zeran and Sherburne.

Dr. Zeran was an early counselor educator and served as an advisor on an extraordinary number of counseling theses. Dr. Zeran also served of the Dean of the CoE and as a director of the OSU Counseling Center. Dr. Sherburne was a founding faculty member of the Department of Psychology in 1946 (along with keeping his appointment in the CoE). Dr. Sherburne went on to become the OUS Vice-Chancellor of Continuing Education (1962-1969).

Source: "Courtesy Harriet's Photographic Collection (P HC 082:983), Special Collections & Archives Research Center, Oregon State University Libraries."

IX. Photo of Dean Carl Salser



Photo caption: Dean Carl W. Salser

Dean Salser was an early counselor educator and as well as a CoE administrator. Dean Salser was a graduate of Harvard University.

Source: "Courtesy Harriet's Photographic Collection (P HC0350), Special Collections & Archives Research Center, Oregon State University Libraries."

X. Photo of Dr. Herbet “Lazzie” Laslett



Photo caption: Counselor educator and educational psychologist Dr. Laslett served as major professor on many master's theses in counseling. He also served as an Army officer in France during WW II.

"Courtesy Presidents Office Photographic Collection (P092:0298), Special Collections & Archives Research Center, Oregon State University Libraries."

XI. Photo of Stanley Williamson

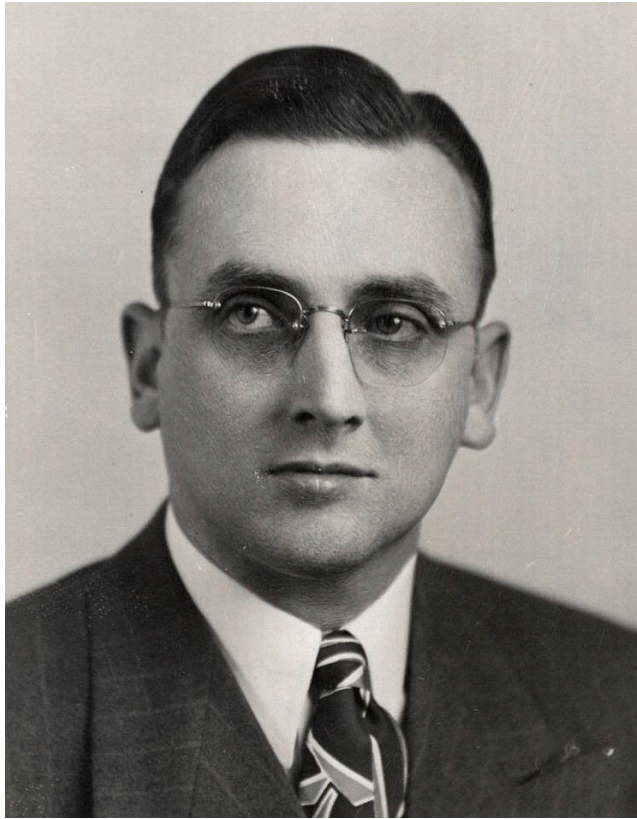


Photo caption: Science educator and counselor educator Dr. Williamson served as a major professor on two counseling master's theses.

“Courtesy Presidents Office Photographic Collection (P092:0635), Special Collections & Archives Research Center, Oregon State University Libraries.”

XII. Photo of Ernest Warrington



Photo caption: Religion and Education professor Dr. Warrington served as a major professor on many counseling master's theses, especially those with a religious or character education theme. Dr. Warrington taught courses on Character Education and group process.

“Courtesy Presidents Office Photographic Collection (P092:0697), Special Collections & Archives Research Center, Oregon State University Libraries.”

XIII. Photo of James Jewell

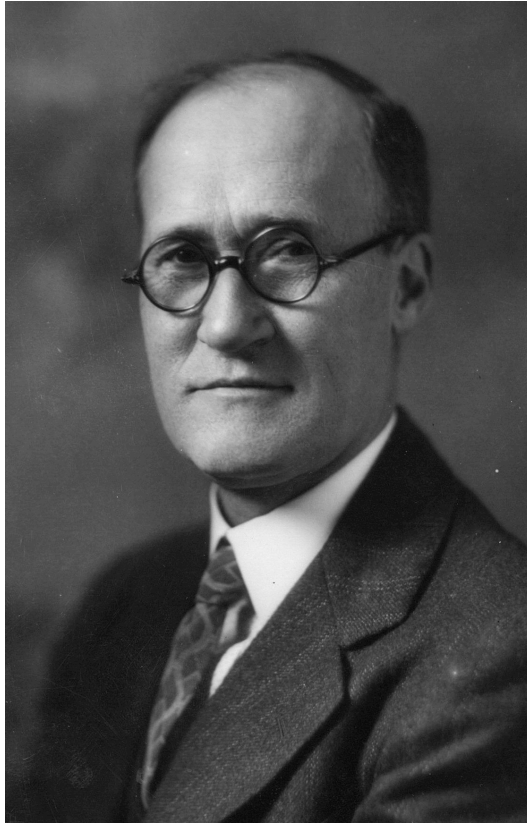


Photo caption: Dean James R. Jewell

Dean Jewell was an early counselor educator who taught adolescent development. He was a graduate student of G. Stanley Hall, the psychologist who coined the term “adolescence.”

Source: “Courtesy Harriet’s Photographic Collection (P HC0230), Special Collections & Archives Research Center, Oregon State University Libraries.”

XIV. References

- General Extension Division. (1937). *Correspondence Study Announcements for 1937-38*. Eugene, OR: Oregon State System of Higher Education. Retrieved from <http://hdl.handle.net/1794/12837>
- Love, L. L. (1929). *The use of extra-curricular activities as guidance: A proposed program* (Master's Thesis). Oregon Agricultural College. Retrieved from <http://hdl.handle.net/1957/38972>
- Martinson, N. H. (1949). *Guidance suggestions for prospective men high school teachers of physical education based on current practices in Oregon* (Master's Thesis). Oregon State University. Retrieved from <http://oasis.oregonstate.edu/search/?searchtype=a&searcharg=martinson%2C+norman&searchscope=13&SORT=D>
- Oregon Agricultural College. (1916). *Catalogue of The Oregon Agricultural College for 1916-17*. Corvallis, OR: OAC Print Shop. Retrieved from <http://hdl.handle.net/1957/9231>
- Oregon State System of Higher Education. (1936). *Portland Extension Center announcements 1936-1937*. Portland, OR: Oregon State System of Higher Education.
- Oregon State System Of Higher Education. (1946). *Graduate theses: University Of Oregon, Oregon State College, University Of Oregon Medical School. 1932-1942*. Eugene, OR: Oregon State System Of Higher Education. Retrieved from <http://oasis.orst.edu/search/o1896250>

Savickas, M. L. (2009). Meyer Bloomfield: Organizer of the Vocational Guidance Movement (1907-1917). *The Career Development Quarterly*, 57(3), 259–273.
doi:10.1002/j.2161-0045.2009.tb00111.x

Waldron, R. K., & Followell, V. (1960). *Theses and dissertations 1943-1959*. Corvallis. OR: Oregon State College. Retrieved from
<http://hdl.handle.net/1957/7517>