

105
E55
no. 390
rev. 1980
cop. 2



COMPACT

Planning Officials in Oregon

A Directory

Oregon State University Extension Service
Special Report 390
Fourth Edition
January 1980

EXTENSION COMMUNITY RESOURCE DEVELOPMENT AGENTS

BAKER

Peter Markgraf
2610 Grove Street
Baker, Oregon 97814

BENTON

Harold Werth
2720 N. W. Polk Street
Corvallis, Oregon 97330

CLACKAMAS

Clayton Wills
256 Warner-Milne Road
Oregon City, Oregon 97045

CLATSOP

Jim Bergeron
Post Office Building
P.O. Box 207
Astoria, Oregon 97103

COLUMBIA

Charles Bubl
County Courthouse
St. Helens, Oregon 97051

COOS

Arthur P. Poole
Coos Curry Coquille Annex
293 North Central
Coquille, Oregon 97423

CROOK

Thomas Bunch
County Courthouse
Prineville, Oregon 97754

CURRY

Walter Schroeder
Curry County Office Building
P. O. Box 488
Gold Beach, Oregon 97444

DESCHUTES

Marvin Young
922 West Highland
P.O. Box 755
Redmond, Oregon 97756

DOUGLAS

Eugene P. Winters
1134 S.E. Douglas Avenue
P. O. Box 1165
Roseburg, Oregon 97470

GILLIAM

Courthouse
P. O. Box 707
Condon, Oregon 97823

GRANT

Arleigh Isley
County Courthouse
Canyon City, Oregon 97820

HARNEY

Paul Friedrichsen
County Courthouse
450 N. Buena Vista
Burns, Oregon 97720

HOOD RIVER

David Burkhart
County Courthouse
P. O. Box 499
Hood River, Oregon 97031

JACKSON

Dawn Hawkins
1301 Maple Grove Drive
Medford, Oregon 97051

JEFFERSON

Ronald T. Mobley
350 "D" Street
Madras, Oregon 97741

Clinton Jacks
Tribal Office Building
Warm Springs Indian Res.
P. O. Box 428
Warm Springs, Oregon 97761

JOSEPHINE

George Tiger
215 Ringuette Street
Grants Pass, Oregon 97526

KLAMATH

Rodney Todd
3328 Vandenberg Road
Klamath Falls, Oregon 97601

LAKE

Ellis E. Williams
County Courthouse
Lakeview, Oregon 97630

LANE

Mike Stoltz
950 W. 13th Street
Eugene, Oregon 97402

LINCOLN

Evelyn Brookhyser
County Courthouse
225 W. Olive Street
Newport, Oregon 97365

LINN

Jack Wood
4th & Lyons
P. O. Box 765
Albany, Oregon 97321

MALHEUR

Gary Schneider
710 S.W. 5th Avenue
Ontario, Oregon 97914

MARION

Greg Tillson
3180 Center Street, NE, Rm. 160
Salem, Oregon 97301

MORROW

Harold Kerr
Gilliam & Bisbee Building
P. O. Box 397
Heppner, Oregon 97836

MULTNOMAH

Harold Black
DCE Bldg, Room 253
P. O. Box 1261
Portland, Oregon 97207

POLK

Lois Watkinson
216 Main Street
Dallas, Oregon 97338

SHERMAN

Alexander W. MacNab
P. O. Box 385
Moro, Oregon 97039

TILLAMOOK

John Massie
County Courthouse
Tillamook, Oregon 97141

UMATILLA

Darrell Maxwell
County Courthouse
P. O. Box 1107
Pendleton, Oregon 97801

UNION

Ralph D. Hart
4th & Adams Street
P. O. Box 760
LaGrande, Oregon 97850

WALLOWA

Robert Salzer
County Courthouse
P. O. Box 280
Enterprise, Oregon 97850

WASCO

Thomas Zinn
County Courthouse Annex
P. O. Box 821
The Dalles, Oregon 97058

WASHINGTON

Richard Beck
Branch Co. Office Building
2448 Tualatin Valley Highway
Hillsboro, Oregon 97123

WHEELER

Kenneth Killingsworth
County Courthouse
P. O. Box 407
Fossil, Oregon 97830

YAMHILL

Wayne Roberts
County Courthouse
McMinnville, Oregon 97128

S
105
.E55
no.390
rev. 1980
cop. 2

PLANNING OFFICIALS IN OREGON

A Directory

OREGON STATE UNIVERSITY EXTENSION SERVICE

SPECIAL REPORT 390

FOURTH EDITION

JANUARY 1980

TABLE OF CONTENTS

INTRODUCTION.	v
COUNTY PLANNING DEPARTMENTS	1
CITY PLANNING DEPARTMENTS	10
COUNCILS OF GOVERNMENTS (COG's)	52
DEPARTMENT OF LAND CONSERVATION AND DEVELOPMENT (DLCD).	56
LAND CONSERVATION AND DEVELOPMENT COMMISSION (LCDC)	57
UNIVERSITY PLANNING RESOURCE PERSONNEL.	59
SELECTED STATE AGENCIES	61
PROFESSIONAL ASSOCIATIONS AND ADVISORY GROUPS	64
ADDITIONAL DIRECTORIES.	67

INTRODUCTION

The primary purpose of this directory is to facilitate communication among participants in the Oregon planning process. The directory is intended as a composite listing of community, county, and state planning functions. This edition contains a revised listing of planning commission chairmen, planning directors for Oregon cities and counties, county coordinators, and council of government directors. The directory also lists members of the Land Conservation and Development Commission and Department staff.

As an aid to planning officials and participants, this edition also lists Oregon State University and University of Oregon planning education and resource personnel and selected agencies, institutions, and organizations that represent sources of planning and related information.

This directory was compiled as part of the Land Resource Management Program of the Oregon State University Extension Service. Every effort has been made to provide up-to-date and accurate information. To maintain our listings we appreciate your help in identifying needed revisions.

Philip L. Jackson
Land Resource Management Specialist
Oregon State University Extension Service

COUNTY PLANNING DEPARTMENTS

BAKER COUNTY - Population: 16,700

Planning Department	Number on Planning Commission:	7
Third & Washington	Number on Planning Staff:	1
Baker, OR 97814		
523-6416, Ext. 228		
Planning Director:	William Quigley	
Local Planning Coordinator:	William Quigley	
Planning Commission Chairman:	Alvin Ward	

BENTON COUNTY - Population: 68,800

Planning Department	Number on Planning Commission:	9
180 N.W. Fifth Street	Number on Planning Staff:	5
Corvallis, OR 97330		
757-6819		
Planning Director:	Alan Couper	
Local Planning Coordinator:	Greg Wolf	
Planning Commission Chairman:	John Beardsley	

CLACKAMAS COUNTY - Population: 220,000

Planning Department	Number on Planning Commission:	9
902 Abernathy Road	Number on Planning Staff:	41
Oregon City, OR 97045		
655-8011		
Planning Director:	David R. Seigneur	
Planning Coordinator -	Tom O'Connor	
Multnomah Service District	527 S.W. Hall	
	Portland, OR 97201	
	221-1646	
Planning Commission Chairman:	Richard Ares	

CLATSOP COUNTY - Population: 30,400

Planning Department	Number on Planning Commission:	7
749 Commercial	Number on Planning Staff:	7
P. O. Box 179		
Astoria, OR 97103		
325-7441, Ext. 71 or 738-8381, Ext. 71		
Planning Director:	Curtis Schneider	
Planning Coordinator - Clatsop-	Rainmar Bartl	
Tillamook Intergovernmental	P. O. Box 488	
Council (CTIC)	Cannon Beach, OR 97110	
	436-2328	
Planning Commission Chairman:	Joe Camberg	

COLUMBIA COUNTY - Population: 34,200

Columbia County Courthouse
Planning Department
St. Helens, OR 97501
397-1501

Number on Planning Commission: 9
Number on Planning Staff: 2

Planning Director:
Local Planning Coordinator:
Planning Commission Chairman:

Brian Christian
Topaz Faulkner
John Scott

COOS COUNTY - Population: 63,200

Planning Department
290 N. Collier
Coquille, OR 97423
396-3121, Ext. 252

Number on Planning Commission: 9
Number on Planning Staff: 6

Planning Director:
Local Planning Coordinator:
Planning Commission Chairman:

Bill Grile
Christi Shoji
Bill Lesley

CROOK COUNTY - Population: 12,400

Crook County Courthouse
Planning Department
Third & Court
Prineville, OR 97754
447-3211

Number on Planning Commission: 7
Number on Planning Staff: 5

Planning Director:
Local Planning Coordinator:
Planning Commission Chairman:

William Zelenka
Jacquie Bushong
Martin Howard

CURRY COUNTY - Population: 16,500

Curry County Courthouse Annex
Planning Department
450 N. Ellensburg
P. O. Box 1123
Gold Beach, OR 97444
247-7011, Ext. 227

Number on Planning Commission: 9
Number on Planning Staff: 4

Planning Director:
Local Planning Coordinator:
Planning Commission Chairman:

Robert Higbie
Robert Higbie
Bertha Goergen

DESCHUTES COUNTY - Population: 49,700

Deschutes County Courthouse
Planning Department
Courthouse Annex, Room 102
Bend, OR 97701
382-4000, Ext. 207

Number on Planning Commission: 9
Number on Planning Staff: 11

Planning Director: William Monroe
Local Planning Coordinator: Betsy Shay
Planning Commission Chairman: Folner Bodtker

DOUGLAS COUNTY - Population: 85,700

Douglas County Courthouse
Planning Department
Courthouse Annex #2
205 S.E. Jackson
Roseburg, OR 97470
672-3311, Ext. 289

Number on Planning Commission: 7
Number on Planning Staff: 14

Planning Director: Keith L. Cubic
Local Planning Coordinator: Dave Bishoff
Planning Commission Chairman: Bill Yeager

GILLIAM COUNTY - Population: 2,200

Gilliam County Courthouse
Planning Department
221 S. Oregon
P. O. Box 427
Condon, OR 97823

Number on Planning Commission: 7
Number on Planning Staff: 1

Planning Director: Linda Ferris
Local Planning Coordinator: Linda Ferris
Planning Commission Chairman: George Jamieson

GRANT COUNTY - Population: 7,700

Grant County Courthouse
Planning Department
200 S. Canyon Blvd.
P. O. Box 214
Canyon City, OR 97820
575-1519

Number on Planning Commission: 9
Number on Planning Staff: 1

Planning Director: Position Vacant
Local Planning Coordinator: Position Vacant
Planning Commission Chairman: Jerry Franklin

HARNEY COUNTY - Population: 7,650

Harney County Courthouse	Number on Planning Commission:	7
Planning Department	Number on Planning Staff:	1
450 N. Buena Vista		
P. O. Box 1147		
Burns, OR 97720		
573-6456		

Planning Consultants:	Morgan Ryan Associates
Local Planning Coordinator:	Carol Smith
Planning Commission Chairman:	Charles Macomber

HOOD RIVER COUNTY - Population: 15,100

Hood River County Courthouse	Number on Planning Commission:	7
Planning Department	Number on Planning Staff:	4
Fourth & State Street		
Hood River, OR 97031		
386-1306		

Planning Director:	Bill Adams
Local Planning Coordinator:	Gary Gidley
Planning Commission Chairman:	Steve Nance

JACKSON COUNTY - Population: 124,500

Planning Department	Number on Planning Commission:	7
32 West Sixth Street	Number on Planning Staff:	3
Medford, OR 97501		
776-7554, Ext. 7385		

Planning Director:	Robert Britzman
Local Planning Coordinator:	Jim Capp
Planning Commission Chairman:	Ogden Kellogg

JEFFERSON COUNTY - Population: 10,200

Jefferson County Courthouse	Number on Planning Commission:	7
Planning Department	Number on Planning Staff:	1
657 "C" Street		
Madras, OR 97441		
475-3147		

Planning Director:	Robert Martin
Local Planning Coordinator:	Robert Martin
Planning Commission Chairman:	Ted Freeman

JOSEPHINE COUNTY - Population: 52,100

Planning Department
510 N.W. 4th Street
Grants Pass, OR 97526
474-5421

Number on Planning Commission: 9
Number on Planning Staff: 17

Planning Director: Ronald Bailey
Local Planning Coordinator: Ronald Bailey
Planning Commission Chairman: Kelly Holbert

KLAMATH COUNTY - Population: 58,700

Klamath County Courthouse
Planning Department
Main Street
Klamath Falls, OR 97601
882-2501, Ext. 200

Number on Planning Commission: 9
Number on Planning Staff: 12

Planning Director: Jim Brockett
Local Planning Coordinator: Jim Brockett
Planning Commission Chairman: Donald Theriault

LAKE COUNTY - Population: 6,900

Lake County Courthouse
Planning Department
513 Center Street
Lakeview, OR 97630
947-4494

Number on Planning Commission: 9
Number on Planning Staff: 1

Planning Director: Janine Cannon
Local Planning Coordinator: Janine Cannon
Planning Commission Chairman: Brenda Flynn

LANE COUNTY - Population: 262,300

Lane County Courthouse
Planning Department
125 E. 8th Street
Eugene, OR 97401
687-4186

Number on Planning Commission: 7
Number on Planning Staff: 15

Planning Director: Lee Miller
Local Planning Coordinator -
 (Lane COG): Gary Darnielle
Lane County Planning Commission
 Chairman: Kermit Scott
West Lane Planning Commission
 Chairman: Al Wysong

LINCOLN COUNTY - Population: 31,200

Planning Department
210 S.W. 2nd Street
Newport, OR 97365
265-6611

Number on Planning Commission: 9
Number on Planning Staff: 5

Planning Director:
Local Planning Coordinator:
Planning Commission Chairman:

Oscar Granger
Position Vacant
Robert Jackson

LINN COUNTY - Population: 88,300

Linn County Courthouse
Planning Department
P. O. Box 100
Albany, OR 97321
967-3816

Number on Planning Commission: 9
Number on Planning Staff: 9

Planning Director:
Local Planning Coordinator:
Planning Commission Chairman:

David E. Schmidt
Greg Wolf
Bill Latimer

MALHEUR COUNTY - Population: 25,900

Malheur County Courthouse
Planning Department
P. O. Box 130
Vale, OR 97918
473-3913

Number on Planning Commission: 9
Number on Planning Staff: 4

Planning Director:
Local Planning Coordinator:
Planning Commission Chairman:

John Beal
John Beal
Wendell Collins

MARION COUNTY - Population: 187,300

Planning Department
220 High Street, N.E.
Salem, OR 97301
588-5038

Number on Planning Commission: 9
Number on Planning Staff: 5

Planning Director:
Local Planning Coordinator:
Planning Commission Chairman:

Russell Nebon
Pam Brown
Gordon Fultz

MORROW COUNTY - Population: 6,400

Morrow County Courthouse
Planning Department
P. O. Box 541
Heppner, OR 97836
676-5030

Number on Planning Commission: 9
Number on Planning Staff: 3

Planning Director: Deane Seeger
Local Planning Coordinator - Jeri Cohen
East Central Oregon Association P. O. Box 1207
of Counties (ECOAC) Pendleton, OR 97801
276-6732

Planning Commission Chairman: Doris Graves

MULTNOMAH COUNTY - Population: 549,000

Planning Department
2115 S. E. Morrison
Portland, OR 97214
248-5259

Number on Planning Commission: 9
Number on Planning Staff: 8

Planning Director: Position Vacant
Acting Planning Director: Robert Baldwin
Local Planning Coordinator: Position Vacant
Planning Commission Chairman: Position Vacant

POLK COUNTY - Population: 44,600

Polk County Courthouse
Planning Department, Room 203
800 Main Street
Dallas, OR 97308
623-8171, Ext. 60

Number on Planning Commission: 7
Number on Planning Staff: 8

Planning Director: Dale A. Jordan
Local Planning Coordinator: Jim Owens
Planning Commission Chairman: Marc McGowan

SHERMAN COUNTY - Population: 2,200

Sherman County Courthouse
Planning Department
P. O. Box 385
Moro, OR 97039
656-3230

Number on Planning Commission: 5
Number on Planning Staff: 1

Planning Director: Daniel Meader
Local Planning Coordinator: Daniel Meader
Planning Commission Chairman: Don Thompson

TILLAMOOK COUNTY - Population: 20,000

Tillamook County Courthouse
Planning Department
201 Laurel Avenue, Room 7
Tillamook, OR 97141
842-5511, Ext. 315

Number on Planning Commission: 9
Number on Planning Staff: 11

Planning Director:
Planning Consultant - Clatsop-
Tillamook Intergovernmental
Council (CTIC)

Paul Benson
Rainmar Bartl
P. O. Box 488
Cannon Beach, OR 97110
436-2328

Planning Commission Chairman:

Mel Williams

UMATILLA COUNTY - Population: 53,900

Umatilla County Courthouse
Planning Department
P. O. Box 1427
Pendleton, OR 97801
276-7111, Ext. 314

Number on Planning Commission: 9
Number on Planning Staff: 6

Planning Director:
Planning Consultant - East Central
Oregon Association of
Counties (ECOAC)

Dennis Olson
Jeri Cohen
P. O. Box 1207
Pendleton, OR 97801
276-6732

Planning Commission Chairman:

Position Vacant

UNION COUNTY - Population: 23,500

Union County Courthouse
Planning Department
"L" and Sixth
LaGrande, OR 97850
963-8686

Number on Planning Commission: 9
Number on Planning Staff: 3

Planning Director:
Local Planning Coordinator:
Planning Commission Chairman:

Hanley Jenkins
Hanley Jenkins
Sharon Beck

WALLOWA COUNTY - Population: 7,000

Wallowa County Courthouse
Planning Department
101 S. River
Enterprise, OR 97828
426-3048

Number on Planning Commission: 9
Number on Planning Staff: 1

Acting Planning Director:
Local Planning Coordinator:
Planning Commission Chairman:

Verne H. Russell
Position Vacant
Malcolm Dawson

WASCO COUNTY - Population: 21,600

Wasco County Courthouse
Planning Department
401 West 4th Street
The Dalles, OR 97058
298-5169

Number on Planning Commission: 7
Number on Planning Staff: 4

Planning Director: David Moon
Local Planning Coordinator: David Moon
Planning Commission Chairman: Paul Kortge

WASHINGTON COUNTY - Population: 215,000

Washington County Courthouse
Planning Department
150 N. First
Hillsboro, OR 97123
648-8761

Number on Planning Commission: 9
Number on Planning Staff: 22

Planning Director: Larry K. Frazier
Local Planning Coordinator - Sue Klobertanz
Multnomah Service District 527 S.W. Hall
Portland, OR 97201
221-1646

Planning Commission Chairman: Donald Burns

WHEELER COUNTY - Population: 7,950

Wheeler County Courthouse
Planning Department
P. O. Box 347
Fossil, OR 97830
763-2911

Number on Planning Commission: 9
Number on Planning Staff: 1 (part time)

Local Planning Coordinator: Bea Donnelly
Planning Commission Chairman: John Misener

YAMHILL COUNTY - Population: 50,100

Yamhill County Courthouse
Planning Department
Room 17
McMinnville, OR 97128
472-9371, Ext. 201

Number on Planning Commission: 9
Number on Planning Staff: 6

Planning Director: Dave Bishop
Local Planning Coordinator: Roberta Young
Planning Commission Chairman: Charles Heckman

CITY PLANNING DEPARTMENTS

ADAIR VILLAGE - Population: 550 Benton County

Adair Village
P. O. Box 24
Corvallis, OR 97330
745-5507

Number on Planning Commission: 8

Planning Consultant: Don Driscoll
Planning Commission Chairman: Michael Veach

ADAMS - Population: 225 Umatilla County

P. O. Box 20
Adams, OR 97810
566-2677

Mayor Pro Tem: Cecil Rand

ADRIAN - Population: 170 Malheur County

P. O. Box 226
Adrian, OR 97901

Mayor: Marv Bowers

ALBANY - Population: 24,000 Linn County

127 Broadalbin S.W.
P. O. Box 490
Albany, OR 97321
967-4318

Number on Planning Commission: 9
Number on Planning Staff: 5

Planning Director: Steve Bryant
Planning Commission Chairman: James Conser

AMITY - Population: 1,055 Yamhill County

P. O. Box 126
Amity, OR 97101
835-3711

Number on Planning Commission: 7

Planning Director: Yamhill County Planning Staff
Planning Commission Chairman: Wayne Smith

ANTELOPE - Population: 55

Wasco County

Main Street
Antelope, OR 97001
489-3257

Mayor:

Vern Mobley

ARLINGTON - Population: 605

Gilliam County

P. O. Box 68
Arlington, OR 97812
454-2743

Number on Planning Commission: 7
Number on Planning Staff: 0

Planning Commission Chairman:

Dennis Bartlett

ASHLAND - Population: 15,500

Jackson County

20 East Main Street
Ashland, OR 97520
482-3211, Ext. 47

Number on Planning Commission: 9
Number on Planning Staff: 2

Planning Director:

Position Vacant

Planning Commission Chairman:

Lois Wenker

ASTORIA - Population: 10,800

Clatsop County

1095 Duane Street
Astoria, OR 97103
325-5821

Number on Planning Commission: 7
Number on Planning Staff: 1½

Planning Director:

Jean H. Hallaux

Planning Commission President:

Ted Blair

ATHENA - Population: 975

Umatilla County

P. O. Box 497
Athena, OR 97813
566-3862

Planning Commission Chairman:

James R. Schroder

AUMSVILLE - Population: 1,600

Marion County

P. O. Box 227
Aumsville, OR 97325
749-2030

Number on Planning Commission: 5

Planning Commission Chairman:

Mike Woodward

AURORA - Population: 530

P. O. Box 108
307 Main Street
Aurora, OR 97002
678-1283

Planning Commission Chairman:

Marion County

Number on Planning Commission: 7

Charles Potter

BAKER - Population: 10,200

P. O. Box 650
Baker, OR 97814
523-4437

Planning Director:
Planning Commission Chairman:

Baker County

Number on Planning Commission: 7
Number on Planning Staff: 1

Jack Leuenberger
Richard Hindman

BANDON - Population: 2,450

P. O. Box 67
Bandon, OR 97411
347-3606

City Administrator:
Planning Commission Chairman:

Coos County

Number on Planning Commission: 7

Ben McMakin
Melvin Boak

BANKS - Population: 515

P. O. Box 428
Banks, OR 97106

Planning Director:
Planning Commission Chairman:

Washington County

Number on Planning Commission: 8
Number on Planning Staff: 1

Bob Crup
Howard Steinbach

BARLOW - Population: 110

103 S. Main-Barlow
Canby, OR 97013
266-9291

Mayor:

Clackamas County

Michael Barnett

BAY CITY - Population: 1,150

P. O. Box 307
Bay City, OR 97107
377-2288

CTIC Consultants:
Planning Commission Chairman:

Tillamook County

Number on Planning Commission: 5
Number on Planning Staff: 2 CTIC Consultants

Rainmar Bartl and Dick Pearson
Phyllis Wustenberg

BEAVERTON - Population: 29,622

Washington County

4950 S.W. Hall Blvd.
Beaverton, OR 97005
644-2191, Ext. 234

Number on Planning Commission: 7
Number on planning staff: 5

Planning Director:
Planning Administrator:
Planning Commission Chairman:

Linda Davis
Scott Burgess
Tim Alexander

BEND - Population: 29,622

Deschutes County

P. O. Box 431
Bend, OR 97701
382-4211

Number on Planning Commission: 9
Number on Planning Staff: 1

Planning Director:
Planning Commission Chairman:

John C. Hossick
Dave Merrifield

BOARDMAN - Population: 1,295

Morrow County

P. O. Box 228
Boardman, OR 97818
481-9252

Number on Planning Commission: 9
Number on Planning Staff: 1

Planning Director:
Planning Commission Chairman:

Jim Thompson
I. M. Docken

BONANZA - Population: 265

Klamath County

P. O. Box 297 - Barlow
Canby, OR 97013
266-9291

Mayor:
Planning Commission Chairman:

Ben H. Harding
Stanley C. Masten

BROOKINGS - Population: 3,500

Curry County

898 Elk Drive
Brookings, OR 97415
469-2163

Number on Planning Commission: 7
Number on Planning Staff: 1

Planning Commission Chairman:

Earl Breuer

BROWNSVILLE - Population: 1,270

255 N. Main Street
P. O. Box 188
Brownsville, OR 97327
466-5666 or 466-5880

Planning Consultant:
Planning Commission Chairman:

Linn County

Number on Planning Commission: 7
Number on Planning Staff: 1/2

Jack Hruska, Linn County Planning Department
David Pond

BURNS - Population: 3,525

90 West Washington
Burns, OR 97720
573-2383

Planning Consultant:
Planning Commission Chairman:

Harney County

Number on Planning Commission: 7

Morgan Ryan
Virginia Tabor

BUTTE FALLS - Population: 405

P. O. Box 268
Butte Falls, OR 97522
865-3262

Planning Commission Chairman:

Jackson County

Alvin Thompson

CANBY - Population: 7,500

182 N. Holly
Canby, OR 97013
266-4021

Planning Director:
Planning Commission Chairman:

Clackamas County

Number on Planning Commission: 7
Number on Planning Staff: 2

Stephan Lashbrook
Gordon Ross

CANNON BEACH - Population: 910

P.O. Box 368
Cannon Beach, OR 97110
436-2328

CTIC Consultant:
Planning Commission Chairman:

Clatsop County

Number on Planning Commission: 9
Number on Planning Staff: 1 CTIC Consultant

Dick Pearson
Gavin Young

CANYON CITY - Population: 690

123 S. Washington
Canyon City, OR 97820
575-0509

Planning Commission Chairman:

Grant County

Number on Planning Commission: 8

William Wall

CANYONVILLE - Population: 1,340

P. O. Box 765
Canyonville, OR 97417

Planning Commission Chairman:

Douglas County

Number on Planning Commission: 9

Carl Hill

CARLTON - Population: 1,385

P. O. Box 452
Carlton, OR 97111
852-7575

Planning Consultants:
Planning Commission Chairman:

Yamhill County

Number on Planning Commission: 7

Yamhill County Planning Department
Jim Turner

CASCADE LOCKS - Population: 860

P. O. Box 308
Cascade Locks, OR 97014
374-8510

Planning Director:
Planning Commission Chairman:

Hood River County

Number on Planning Commission: 5
Number on Planning Staff: 1

C. Schmitt
Jay McCulley

CAVE JUNCTION - Population: 851

P. O. Box "F"
Cave Junction, OR 97523
Cave Junction, OR 97523
592-2156

Planning Commission Chairman:

Josephine County

Number on Planning Commission: 7
Number on Planning Staff: 1

Allen E. Linsley

CENTRAL POINT - Population: 6,450

250 E. Pine
Central Point, OR 97502
664-1201

Planning Director:
Planning Commission Chairman:

Jackson County

Number on Planning Commission: 9
Number on Planning Staff: 2

E. David Kucera
Ben McManama

CHILOQUIN - Population: 850

P. O. Box 196
Chiloquin, OR 97624
783-2717

Planning Commission Chairman:

Klamath County

Number on Planning Commission: 5

John A. Klaita

CLATSKANIE - Population: 1,700

P. O. Box 9
Clatskanie, OR 97016
728-2622

Planning Commission Chairman:

Columbia County

Number on Planning Commission: 5

Shirley Salo

COBURG - Population: 855

P. O. Box 8316
Coburg, OR 97401
485-6266

Planning Commission Chairman:

Lane County

Number on Planning Commission: 7

Robert Bryson

COLUMBIA CITY - Population: 740

1755 Second Place
Columbia City, OR 97018
397-4010

Planning Commission Chairman:

Columbia County

Number on Planning Commission: 7

Peggy Artman

CONDON - Population: 950

P. O. Box 465
Condon, OR 97823

Planning Commission Chairman:

Gilliam County

Number on Planning Commission: 3

Marianne Jamieson

COOS BAY - Population: 15,300

P. O. Box 1118
Coos Bay, OR 97420
269-1181

Community Development Director:
Planning Coordinators:
Planning Commission Chairman:

Coos County

Number on Planning Commission: 7
Number on Planning Staff: 4

Tony Virgili
Cynthia Hartmann and Jim Minard
Bob Vratney

COQUILLE - Population: 4,700

Coos County

99 E. Second Street
Coquille, OR 97423
396-2115

Number on Planning Commission: 7
Number on Planning Staff: 1

Planning Director:
Planning Commission Chairman:

John Higgins
Jim Fleck

CORNELIUS - Population: 3,450

Washington County

120 N. 13th
Cornelius, OR 97113
648-1197 or 357-9112

Number on Planning Commission: 9

Planning Consultants:
Planning Commission Chairman:

Dick Hutchinson, Arnold Cogan & Associates
Charles Mumford

CORVALLIS - Population: 40,500

Benton County

501 S.W. Madison Avenue
Corvallis, OR 97330
757-6908

Number on Planning Commission: 9
Number on Planning Staff: 6

Planning Director:
Planning Commission Chairman:

Tom Coffee
George Heilig

COTTAGE GROVE - Population: 7,400

Lane County

400 Main Street
Cottage Grove, OR 97424
942-3349

Number on Planning Commission: 7
Number on Planning Staff: 3

Planning Director:
Planning Commission Chairman:

Mike Byers
Gary Trinkka

COVE - Population: 480

Union County

P. O. Box 8
Cove, OR 97824
568-4406

Number on Planning Commission: 8
Number on Planning Staff: 1

Planning Consultant:
Planning Commission Chairman:

Lynn Steiger
Grant Born

CRESWELL - Population: 1,830

P. O. Box 276
Creswell, OR 97426
895-2531

Planning Director:
Planning Commission Chairman:

Lane County

Number on Planning Commission: 7

Ronald L. Hanson
Bruce Bittle

CULVER - Population: 550

P. O. Box 256
Culver, OR 97734
546-6494

Planning Director:
Planning Commission Chairman:

Jefferson County

Number on Planning Commission: 5
Number on Planning Staff: 1

Dan Meader
Barbara Frazier

DALLAS - Population: 9,000

187 S.E. Court Street
P. O. Box 67
Dallas, OR 97338
623-2338

Planning Director:
Planning Commission Chairman:

Polk County

Number on Planning Commission: 7
Number on Planning Staff: 2

C.E. (Gene) Fredrickson
Robert Wilson

DAYTON - Population: 1,445

P. O. Box 338
Dayton, OR 97114
864-2221

Planning Consultant:
Planning Commission Chairman:

Yamhill County

Number on Planning Commission: 7

Yamhill County Planning Department
Ernest Budke

DAYVILLE - Population: 205

P. O. Box 316
Dayville, OR 97825

Mayor:

Grant County

Mark Reasoner

DEPOE BAY - Population: 730

P. O. Box 8
Depoe Bay, OR 97341
765-2361

Planning Consultant:
Planning Commission Chairman:

Lincoln County

Number on Planning Commission: 9

Garret Smith, City of Toledo Planning Director
Roger Phillips

DETROIT - Population 620

P. O. Box 589
Detroit, OR 97342
854-3496

Planning Consultant:
Planning Commission Chairman:

Marion County

Number on Planning Commission: 9
Number on Planning Staff: 2

John Russell, Mid-Willamette Valley COG
Iris Henzel

DONALD - Population: 310

P. O. Box 368
Donald, OR 97020
678-5543

Mayor:

Marion County

Number on Planning Commission: 9

Dean Davis

DRAIN - Population: 1,370

P. O. Box 158
Drain, OR 97435
836-2417

Planning Commission Chairman:

Douglas County

Number on Planning Commission: 5

LaDon Snyder

DUFUR - Population: 600

P. O. Box 145
Dufur, OR 97021
467-2349

Planning Director:
Planning Commission Chairman:

Wasco County

Number on Planning Commission: 7
Number on Planning Staff: 1

Dan Meader
Elna Reed

DUNDEE - Population: 1,210

P. O. Box 201
Dundee, OR 97115
538-3922

Planning Commission Chairman:

Yamhill County

Number on Planning Commission: 9
Number on Planning Staff: 2

Mike Gross

DUNES CITY - Population: 1,130

Lane County

P. O. Box 97
Westlake, OR 97393
997-3338

Number on Planning Commission: 5

Planning Commission Chairman:

Evelyn Passenger

DURHAM - Population: 440

Washington County

815 S.W. Petus Road
Durham, OR 97223
639-6851

Number on Planning Commission: 9

Number on Planning Staff: 2

Planning Director:

Lorraine Winthers

Planning Commission Chairman:

Gery Schirado

EAGLE POINT - Population: 2,830

Jackson County

Drawer "C"
Eagle Point, OR 97524
826-4212

Number on Planning Commission: 7

Number on Planning Staff: 2

Planning Director:

Robert D. DeLong

Planning Commission Chairman:

John Payne

EASTSIDE - Population: 1,580

Coos County

P. O. Box 4325
Eastside, OR 97420
267-6811

Number on Planning Commission: 7

Planning Commission Chairman:

Roy Culley

ECHO - Population: 500

Umatilla County

P. O. Box 669
Echo, OR 97826
376-8411

Mayor:

Marvin Laughlen

ELGIN - Population: 1,735

Union County

P. O. Box 128
Elgin, OR 97827

Mayor:

Ron Scoubes

ELKTON - Population: 205

P. O. Box 508
Elkton, OR 97436
584-2547

Mayor:

Douglas County

Charles W. Henderer

ENTERPRISE - Population: 2,006

108 N.E. First Street
Enterprise, OR 97828
426-4196

Planning Commission Chairman:

Wallowa County

Number on Planning Commission: 7

Norman Potratz

ESTACADA - Population: 1,900

P. O. Box 247
Estacada, OR 97023
630-3223

Planning Commission Chairman:

Clackamas County

Number on Planning Commission: 9

Gary Warkintin

EUGENE - Population: 104,900

P. O. Box 1967
Eugene, OR 97440
687-5481

Planning Director:

Planning Commission Chairman:

Lane County

Number on Planning Commission: 9

Number on Planning Staff: 16

John Porter

Dr. John P. MacKinnon, Jr.

FAIRVIEW - Population: 1,850

P. O. Box 395
Fairview, OR 97024
665-7929

Planning Commission Chairman:

Multnomah County

Number on Planning Commission: 7

James Robinson

FALLS CITY - Population: 870

299 Mill Street
Fall City, OR 97344
787-3611

Planning Commission Chairman:

Polk County

Number on Planning Commission: 7

Number on Planning Staff: 1

Joe Choan

FLORENCE - Population: 3,900

Lane County

P. O. Box 340
Florence, OR 97439
997-3437

Number on Planning Commission: 7
Number on Planning Staff: 2

Planning Director:
Planning Coordinator:
Planning Commission Chairman:

Karl Jennings
Jim Hinman
Greg Anderson

FOREST GROVE - Population: 11,280

Washington County

1924 Council Street
Forest Grove, OR 97116
357-7151, Ext. 211

Number on Planning Commission: 9
Number on Planning Staff: 5

Planning Director:
Planning Commission Chairman:

Dick Bewersdorff
H. Thomas Gillespie

FOSSIL - Population: 680

Wheeler County

P. O. Box 467
Fossil, OR 97830
763-2698

Mayor:

David H. Scott

GARIBALDI - Population: 1,220

Tillamook County

P. O. Box 708
Garibaldi, OR 97118
322-3327

Mayor:

Russell C. Curnutt

GASTON - Population: 450

Washington County

Rt. 1 Box 308
Gaston, OR 97119
985-7521

Number on Planning Commission: 5

Planning Commission Chairman:

Norman Bennett

GATES - Population: 300

Marion County

P. O. Box 586
Gates, OR 97346
897-2669

Number on Planning Commission: 8

Planning Commission Chairman:

Lola Henness

GEARHART - Population: 920

Clatsop County

Drawer "D"
Gearhart, OR 97138
738-5501

Number on Planning Commission: 9

Planning Commission Chairman:

David Price

GERVAIS - Population: 870

Marion County

P. O. Box 348
Gervais, OR 97026
792-4222

Mayor:

John Jirges

GLADSTONE - Population: 9,350

Clackamas County

525 Portland Avenue
Gladstone, OR 97027
656-5223

Number on Planning Commission: 7
Number on Planning Staff: 2

Planning Director:
Planning Commission Chairman:

George Samaan
Dale Horton

GLENDALE - Population: 820

Douglas County

P. O. Box 361
Glendale, OR 97442
832-2106

Planning Commission Chairman:

George Rogers Clarke, Jr.

GOLD BEACH - Population: 2,170

Curry County

P. O. Box 747
Gold Beach, OR 97444
247-7029

Number on Planning Commission: 5

Planning Consultants:
Planning Commission Chairman:

Curry County Planning Director, Robert Higbie
Ted Martens

GOLD HILL - Population: 820

Jackson County

P. O. Box 215
Gold Hill, OR 97525
855-1031

Planning Commission Chairman:

Orrin Fredericks

GRANITE - Population 20

Grant County

Granite Rt.
Sumpter, OR 97877

Mayor:

Darrell Smith

GRANTS PASS - Population: 16,500

Josephine County

101 N.W. "A" Street
Grants Pass, OR 97526
476-8801

Number on Planning Commission: 9
Number on Planning Staff: 2

Community Development Director:
Planning Commission Chairman:

Edward Gallagher
Robert Repine

GRASS VALLEY - Population: 150

Sherman County

P. O. Box 173
Grass Valley, OR 97029

Mayor:

E. M. Eslinger

GREENHORN - Population: 3

Baker County

775 S. Clematis Road
West Linn, OR 97068
656-6936

Mayor:

Myles F. Potter

GRESHAM - Population: 30,200

Multnomah County

150 W. Powell Blvd.
Gresham, OR 97030
666-3741

Number on Planning Commission: 7
Number on Planning Staff: 6

Planning Commission Chairman:

Robert Brunmeier

HAINES - Population: 360

Baker County

P. O. Box 14
Haines, OR 97833
856-3366

Local Planning Coordinator:

V. Ray Rowan

HALFWAY - Population: 390

Baker County

P. O. Box 738
Halfway, OR 97834
742-4741

Number on Planning Commission: 3

Planning Commission Chairman:

Position Vacant

HALSEY - Population: 725

Linn County

P. O. Box 35
Halsey, OR 97348
369-2522

Number on Planning Commission: 9

Local Planning Coordinator:

Greg Wolf, Linn County Planning Coordinator

Planning Commission Chairman:

Earl Albertson

HAMMOND - Population: 560

Clatsop County

P. O. Box 161
Hammond, OR 97121
861-2712

Number on Planning Commission: 7

Acting Planning Director:

Judith Jeremiah

Planning Commission Chairman:

Don Shaw

HAPPY VALLEY - Population: 1,450

Clackamas County

10602 S.E. 129th
Portland, OR 97236
760-3325

Number on Planning Commission: 8

Planning Commission Chairman:

Evelyn Kedneigh

HARRISBURG - Population: 1,775

P. O. Box 378
Harrisburg, OR 97446
995-6655

Planning Commission Chairman:

Linn County

Number on Planning Commission: 8

Don C. Jensen

HELIX - Population: 165

P. O. Box 308
Helix, OR 97835
457-2810

Mayor:

Umatilla County

Dean L. Newton

HEPPNER - Population: 1,730

P. O. Box 756
Heppner, OR 97836
676-9618

City Administrator:
Planning Commission Chairman:

Morrow County

Number on Planning Commission: 9
Number on Planning Staff: 1

Marshall Lougren
Terry Hager

HERMISTON - Population: 8,150

295 E. Main Street
Hermiston, OR 97838
567-5521

Planning Commission Chairman:

Umatilla County

Number on Planning Commission: 9
Number on Planning Staff: 1

Bernard Carper

HILLSBORO - Population: 25,800

205 S.E. 2nd Avenue
Hillsboro, OR 97123
648-0821

Planning Director:
Planning Commission Chairman:

Washington County

Number on Planning Commission: 7
Number on Planning Staff: 4

Tim Erwert
Barbara Frost

HINES - Population: 1,575

P. O. Box 336
Hines, OR 97738
573-2251 or 573-2244

Planning Commission Chairman:

Harney County

Number on Planning Commission: 6

Donald G. Witte

HOOD RIVER - Population: 4,860

Hood River County

P. O. Box 27
Hood River, OR 97031
386-1488

Number on Planning Commission: 7
Number on Planning Staff: 1

Planning Director:
Planning Commission Chairman:

Richard Lunceford
Marge Wickman

HUBBARD - Population: 1,550

Marion County

P. O. Box 237
Hubbard, OR 97032
981-9633

Number on Planning Commission: 9

Planning Commission Chairman:

Leonard Bizon

HUNTINGTON - Population: 580

Baker County

P. O. Box 368
Huntington, OR 97907
869-2202

Planning Commission Chairman:

Donita Raney

IDANHA - Population: 430

Marion County

P. O. Box 338
Idanha, OR 97350
854-3342

Number on Planning Commission: 10

Planning Commission Chairman:

June Mennis

IMBLER - Population: 235

Union County

Imbler, OR 97841
534-4111

Mayor:

Doyle Eisiminger

INDEPENDENCE - Population: 4,350

Polk County

240 Monmouth Street
Independence, OR 97351

Number on Planning Commission: 7
Number on Planning Staff: 1

Planning Director:
Planning Commission Chairman:

Dale Jordan
Mark McGowan

IONE - Population: 420

P. O. Box 361
Ione, OR 97843

Comprehensive Planner:
Planning Commission Chairman:

Morrow County

Number on Planning Commission: 9

Marie Hall
Fredrick T. Martin

IRRIGON - Population: 515

P. O. Box 428
Irrigon, OR 97844
922-3047

Planning Commission Chairman:

Morrow County

Don Eppenback

ISLAND CITY - Population: 545

Rt. 3, Box 4240
LaGrande, OR 97850
963-5017

Planning Director:

Union County

Number on Planning Commission: 6

Jim Lundy

JACKSONVILLE - Population: 2,175

P. O. Box 7
Jacksonville, OR 97530
899-1231

Planning Commission Chairman:

Jackson County

Number on Planning Commission: 7

George Badura

JEFFERSON - Population: 1,690

163 N. Main Street
Jefferson, OR 97352
327-2768

Planning Commission Chairman:

Marion County

Number on Planning Commission: 9

Burt Bailiff

JOHN DAY - Population: 2,090

240 S. Canyon Blvd.
John Day, OR 97845
575-0028

Planning Commission Chairman:

Grant County

Number on Planning Commission: 9

Ginger McGrath

JOHNSON CITY - Population: 520

Clackamas County

8021 S.E. Posey Street
Johnson City, OR 97222
655-6750

Number on Planning Commission: 5

Planning Commission Chairman:

Darylin R. Lund

JORDAN VALLEY - Population: 295

Malheur County

P. O. Box 132
Jordan Valley, OR 97910
586-2460

Mayor:

Edward Krupp

JOSEPH - Population: 990

Wallowa County

P. O. Box 15
Joseph, OR 97846
432-3832

Mayor:

George Dawson, Jr.

JUNCTION CITY - Population: 3,010

Lane County

P. O. Box 245
Junction City, OR 97448
998-2153

Number on Planning Commission: 7

Planning Commission Chairman:

Douglas Sweetland

KING CITY - Population: 1,980

Washington County

15390 S.W. 116th Avenue
Kings City, OR 97223
639-4082

Number on Planning Commission: 5

Planning Director:

Lloyd Carroll

Planning Commission Chairman:

James McKinlay

KLAMATH FALLS - Population: 18,300

Klamath County

P. O. Box 237
Klamath Falls, OR 97601
884-3161

Number on Planning Commission: 7

Number on Planning Staff: 4

Assistant Planning Director:
Planning Commission Chairman:

Karen Lynch
Bud Hart

LAFAYETTE - Population: 1,050

P. O. Box 55
Lafayette, OR 97127
864-2451

Planning Commission Chairman:

Yamhill County

Number on Planning Commission: 9

Lee R. Pence

LAGRANDE - Population: 11,860

104 Elm Street
P. O. Box 670
LaGrande, OR 97850
963-7161

Planning Director:
Planning Commission Chairman:

Union County

Number on Planning Commission: 7
Number on Planning Staff: 1

Rick Craiger
Jack W. Thomas

LAKE OSWEGO - Population: 22,000

348 N. State Street
P. O. Box 369
Lake Oswego, OR 97034
636-3601

Planning Director:
Planning Commission Chairman:
Community Development Director:

Clackamas County

Number on Planning Commission: 7
Number on Planning Staff: 4

Patrick Barnum
Ardis Stevenson
Michael O'Brien

LAKESIDE - Population: 1,580

P. O. Box "L"
Lakeside, OR 97449
759-3171

Planning Commission Chairman:

Coos County

Number on Planning Commission: 5

King Phelps

LAKEVIEW - Population: 3,000

525 North First Street
Lakeview, OR 97630
947-2029

Planning Consultants:
Planning Commission Chairman:

Lake County

Number on Planning Commission: 7
Number on Planning Staff: 2

Lynn D. Steiger & Associates
Jim Elder

LEBANON - Population: 9,605

P. O. Box 86
Lebanon, OR 97355
258-3185

Planning Director:
Planning Commission Chairman:

Linn County

Number on Planning Commission: 9
Number on Planning Staff: 2

John Humphreys
Merle Gilb

LEXINGTON - Population: 290

P. O. Box 587
Lexington, OR 97839
989-8419

Mayor:

Morrow County

Number on Planning Commission: 5

Lee Padberg

LINCOLN CITY - Population: 4,890

P. O. Box 48
Lincoln City, OR 97367
996-2151

Planning Director:
Planning Commission Chairman:

Lincoln County

Number on Planning Commission: 7
Number on Planning Staff: 2

Emmett Dobey
James VanHandel

LONEROCK - Population: 20

Sam Nichols
Lonerock Route
Condon, OR 97823

Mayor:

Gilliam County

Number on Planning Commission: 3

Sam Nichols

LONG CREEK - Population: 210

P. O. Box 547
Long Creek, OR 97856

Mayor:

Grant County

Ivan McDaniel

LOSTINE - Population: 235

P. O. Box 23
Lostine, OR 97857
569-2415

Mayor:

Wallowa County

Number on Planning Commission: 6

Richard Hagenah

LOWELL - Population: 700

P. O. Box 347
Lowell, OR 97452
937-2157

Planning Commission Chairman:

Lane County

Number on Planning Commission: 7

Donald Gray

LYONS - Population: 920

P. O. Box 81
Lyons, OR 97358
859-2366

Planning Commission Chairman:

Linn County

Number on Planning Commission: 7

Robert I. Smith

MADRAS - Population: 2,180

416 6th Street
Madras, OR 97741
475-2344

Planning Commission Chairman:

Jefferson County

Ron Mobley

MALIN - Population: 595

P. O. Box 61
Malin, OR 97632
723-2021

Planning Commission Chairman:

Klamath County

Donald Crawford

MANZANITA - Population: 491

P. O. Box "C"
Manzanita, OR 97130
368-5343

Planning Commission Chairman:

Tillamook County

Number on Planning Commission: 9

Tom Jones

MAUPIN - Population: 595

P. O. Box 308
Maupin, OR 97037

Planning Director:

Planning Commission Chairman:

Wasco County

Number on Planning Commission: 7

Dan Durow

M. R. Richmond

MAYWOOD PARK - Population: 985

P. O. Box 20344
Maywood Park, OR 97220
252-3150

Mayor:

Multnomah County

Number on Planning Commission: 5

Clifford G. Allen

MCMINNVILLE - Population: 14,350

211 South Cowls
McMinnville, OR 97128
472-9371, Ext. 320

Planning Director:
Planning Commission Chairman:

Yamhill County

Number on Planning Commission: 9
Number on Planning Staff: 4

Richard M. Highsmith, III
Fred Patton

MEDFORD - Population: 39,650

411 W. 8th Street
Medford, OR 97501
776-7503

Planning Director:
Planning Commission Chairman:

Jackson County

Number on Planning Commission: 9
Number on Planning Staff: 6

Jim Eisenhard
James Fernlund

MERRILL - Population: 900

P. O. Box 421
Merrill, OR 97633
798-5808

Planning Coordinators:
Planning Commission Chairman:

Klamath County

Number on Planning Commission: 7

Lynn A. Steiger & Associates
William A. Standrige, Jr.

METOLIUS - Population: 420

636 Jefferson Avenue
Metolius, OR 97442
546-5533

Planning Commission Chairman:

Jefferson County

Number on Planning Commission: 7

Garrett Cooke

MILL CITY - Population: 1,630

P. O. Box 256
Mill City, OR 97360
897-2302

Planning Commission Chairman:

Linn County

Number on Planning Commission: 9

Margaret Snow

MILLERSBURG - Population: 620

4310 N.E. Woods Road
Albany, OR 97321
928-4523

Planning Consultant
Planning Commission Chairman:

Linn County

Number on Planning Commission: 9
Number on Planning Staff: 1

Don Driscoll
Herb Howell

MILTON-FREEWATER - Population: 5,500

P. O. Box 6
Milton-Freewater, OR 97896
938-5596

Community Planning Liason:
Planning Director:
Planning Commission Chairman:

Umatilla County

Number on Planning Commission: 9
Number on Planning Staff: 1

Robert Chandler
Del McNerney
Jim Burns

MILWAUKIE - Population: 18,530

10722 S.E. Main Street
Milwaukie, OR 97222
659-5171

Planning Director:
Planning Commission Chairman:

Clackamas County

Number on Planning Commission: 7
Number on Planning Staff: 3

Cyrus Nims
Mark Landis

MITCHELL - Population: 200

Mitchell, OR 97750

Mayor:

Wheeler County

Number on Planning Commission: 6

Roy Critchlow

MOLALLA - Population: 3,050

P. O. Box 248
Molalla, OR 97038
829-6855

Planning Commission Chairman:

Clackamas County

Number on Planning Commission: 9

Doris Pence

MONMOUTH - Population: 6,700

151 W. Main Street
Monmouth, OR 97361
838-0722

Planning Director:
Planning Commission Chairman:

Polk County

Number on Planning Commission: 10

Otto Pikel
Sylvia Alva

MONROE - Population: 503

655 Commercial Street
Monroe, OR 97456
847-5176

Planning Commission Chairman:

Benton County

Number on Planning Commission: 7

Charles Green

MONUMENT - Population: 180

Monument, OR 97864
934-2311 or 934-2305

Mayor:

Grant County

Number on Planning Commission: 9

Jack Sweek

MORO - Population: 365

Moro, OR 97039

Mayor:

Sherman County

Glenn Virtue

MOSIER - Population: 270

P. O. Box 456
Mosier, OR 97040
478-3505

Mayor:

Wasco County

Elmer H. Lierman

MT. ANGEL - Population: 2,750

P. O. Box 105
Mt. Angel, OR 97362
845-6139

Planning Commission Chairman:

Marion County

Number on Planning Commission: 5

Thomas C. Bauman

MYRTLE CREEK - Population: 3,400

P. O. Box 745
Myrtle, Creek, OR 97457
863-3171

Planning Aide:

Planning Commission Chairman:

Douglas County

Number on Planning Commission: 9

Number on Planning Staff: 1

Maurine Ware
Michael Psiropoulos

MYRTLE POINT - Population: 3,000

Coos County

424 5th Street
Myrtle Point, OR 97458
572-2626

Number on Planning Commission: 7

Planning Commission Chairman:

Clayton Weaver

NEHALEM - Population 280

Tillamook County

P. O. Box 143
Nehalem, OR 97131
368-5627

Number on Planning Commission: 6

Planning Commission Chairman:

Alfred E. Vosper

NEWBERG - Population: 10,000

Yamhill County

414 E. First Street
Newberg, OR 97132
538-9421

Number on Planning Commission: 9
Number on Planning Staff: 1

Planning Director:
Planning Commission Chairman:

Clay W. Moorhead
Maybelle DeMay

NEWPORT - Population: 7,650

Lincoln County

810 S.W. Alder Street
Newport, OR 97365
265-5331

Number on Planning Commission: 7
Number on Planning Staff: 1

Planning Director:
Planning Commission Chairman:

Jan Monroe
Jim Nielson

NORTH BEND - Population: 10,300

Coos County

P. O. Box "B"
North Bend, OR 97459
756-6311

Number on Planning Commission: 9
Number on Planning Staff: 6

Planning Commission Chairman:

Mike Delbin

NORTH PLAINS - Population: 890

440 Commercial
P.O. Box 616
North Plains, OR 97133
647-5555

Planning Consultant:
Planning Commission Chairman:

Washington County

Number on Planning Commission: 9

Robert A. Browning, A.I.P.
Richard Stolte

NORTH POWDER - Population: 470

P. O. Box 287
North Powder, OR 97867
989-2146

Mayor:

Union County

Number on Planning Commission: 14

J. M. Brockway

NYSSA - Population: 3,000

14 S. Third Avenue
Nyssa, OR 97913
372-2264

Planning Commission Chairman:

Malheur County

Number on Planning Commission: 7

Don Buker

OAKLAND - Population: 1,160

117 S.E. Third Street
P. O. Box 788
Oakland, OR 97462
459-4531

Planning Commission Chairman:

Douglas County

Number on Planning Commission: 7

Jack D. Smith

OAKRIDGE - Population: 4,300

48318 E. First Street
P. O. Box 385
Oakridge, OR 97463
782-2258

Planning Commission Chairman:

Lane County

Number on Planning Commission: 7

Number on Planning Staff: 1

Burt Davis

ONTARIO - Population: 9,000

444 S. W. 4th Street
Ontario, OR 97914
889-7689

Planning Consultants:

Malheur County

Number on Planning Commission: 9
Number on Planning Staff: 1

Malheur County Planning Department

OREGON CITY - Population: 14,700

P. O. Box 631
Oregon City, OR 97045
655-8409

Acting Planning Director:
Planning Commission Chairman:

Clackamas County

Number on Planning Commission: 9
Number on Planning Staff: 4

Catherine Galbraith
Don Williams

PENDLETON - Population: 15,000

P. O. Box 190
Pendleton, OR 97801
276-1811

Planning Director:
Planning Commission Chairman:

Umatilla County

Number on Planning Commission: 7
Number on Planning Staff: 2

Edward A. Rhodes
Joe Lindell

PHILOMATH - Population: 2,400

P. O. Box 549
Philomath, OR 97370
929-3501

Planning Commission Chairman:

Benton County

Number on Planning Commission: 7

John Shackelton

PHOENIX - Population: 1,945

P. O. Box 327
Phoenix, OR 97535
535-1955

Planning Consultant:
Planning Commission Chairman:

Jackson County

Number on Planning Commission: 7
Number on Planning Staff: 1

Richard Stevens
Barbara Arney

PILOT ROCK - Population: 1,760

144 Alder Place
Pilot Rock, OR 97868
443-2811

Planning Commission Chairman:

Umatilla County

Number on Planning Commission: 7
Number on Planning Staff: 1

William Elfering

PORTLAND - Population: 366,650

1220 S.W. 5th Avenue
Portland, OR 97204
248-4120

Planning Director:
Planning Commission Chairman:

Multnomah County

Number on Planning Commission: 0
Number on Planning Staff: 35

Doug Wright
Joan Smith

PORT ORFORD - Population: 1,065

P. O. Box 318
Port Orford, OR 97456
332-2111

Planning Consultant:
Planning Commission Chairman:

Curry County

Number on Planning Commission: 7

Robert Higbie, Curry County Planning Director
Clifford Rasch

POWERS - Population: 975

P. O. Box 250
Powers, OR 97466
439-3254

Planning Commission Chairman:

Coos County

Number on Planning Commission: 18

James Adamek

PRAIRIE CITY - Population: 1,120

P. O. Box 342
Prairie City, OR 97869
820-3605

Mayor:

Grant County

Number on Planning Commission: 8

Donald Parker

PRESCOTT - Population: 100

Rt. 2, Box 530
Rainier, OR 97048

Mayor:

Columbia County

Norma Lou Carter

PRINEVILLE - Population: 12,500

Crook County

400 E. Third Street
Prineville, OR 97754
447-3211

Number on Planning Commission: 7
Number on Planning Staff: 5

Planning Director:
Assistant Planning Coordinator:
Planning Commission Chairman:

William Zelenka
Jacquie Bushong
William Greenfield

RAINIER - Population: 2,027

Deschutes County

P. O. Box "A"
Rainier, OR 97048
556-7301 or 556-3200

Number on Planning Commission: 7
Number on Planning Staff: 3

Planning Director:
Planning Commission Chairman:

Howard Glazer
John X. Wittwer

REDMOND - Population: 6,500

Deschutes County

455 S. 7th
Redmond, OR 97756
548-2148

Number on Planning Commission: 7
Number on Planning Staff: 1

Planning Director:
Planning Commission Chairman:

Carol L. Wells-Connell
Position vacant

REEDSPORT - Population: 5,250

Douglas County

451 Winchester Avenue
P. O. Box 358
Reedsport, OR 97467
271-3115

Number on Planning Commission: 7
Number on Planning Staff: 1

Planning Director:
Planning Commission Chairman:

Edward Wynes
Thomas E. Hedgepeth

RICHLAND - Population: 200

Baker County

P. O. Box 236
Richland, OR 97870
523-6414

Planning Coordinator:

Baker County Planning Department

RIDDLE - Population: 1,230

P. O. Box 143
Riddle, OR 97469
874-2571

Planning Commission Chairman:

Douglas County

Number on Planning Commission: 5

William B. Strobridge

RIVERGROVE - Population: 350

P. O. Box 1104
Lake Oswego, OR 97034
639-3919

Planning Commission Chairman:

Clackamas County

Number on Planning Commission: 7

Edith Stark

ROCKAWAY - Population: 1,015

P. O. Box 35
Rockaway, OR 97136
355-2291

Planning Coordinators:
Planning Commission Chairman:

Tillamook County

Number on Planning Commission: 7

Clatsop-Tillamook Intergovernmental Council
Eugene Helgersen

ROGUE RIVER - Population: 1,290

P. O. Box "Q"
Rogue River, OR 97537
582-0856

Planning Director:
Planning Commission Chairman:

Jackson County

Number on Planning Commission: 7
Number on Planning Staff: 1

E. L. Bacon, Jr.
Twila Marceau

ROSEBURG - Population: 18,217

900 S.E. Douglas Avenue
Roseburg, OR 97470
672-7701, Ext. 41

Planning Director:
Planning Commission Chairman:

Douglas County

Number on Planning Commission: 7
Number on Planning Staff: 1

Peter T. Donahue
Lois Allen

RUFUS - Population: 320

P. O. Box 27
Rufus, OR 97050
739-2321

Land Use Planner:

Sherman County

Number on Planning Staff: 1

Daniel Durow

ST. HELENS - Population: 8,100

Columbia County

P. O. Box 278
St. Helens, OR 97051
397-3373

Number on Planning Commission: 7
Number on Planning Staff: 1

Planning Director:
Planning Commission Chairman:

Howard Cutler
Greg Mier

ST. PAUL - Population: 380

Marion County

P. O. Box 7
St. Paul, OR 97137
633-4971

Number on Planning Staff: 1

Planning Coordinator:

Marion County Planning Department

SALEM - Population: 90,000

Marion County

Dept. of Community Development
555 Liberty Street, S.E.
Salem, OR 97301
588-6173

Number on Planning Commission: 7
Number on Planning Staff: 20

Planning Administrator:
Planning Commission Chairman:

Kenneth P. Battaile
Geoffrey James

SANDY - Population: 2,591

Clackamas County

P. O. Box 116
Sandy, OR 97055
668-5533

Number on Planning Commission: 7
Number on Planning Staff: 3

Planning Consultants:
Planning Commission Chairman:

Cunningham & Associates
Kenneth Hallgren

SCAPPOOSE - Population: 3,150

Columbia County

P. O. Box "P"
Scappoose, OR 97056
543-7146

Number on Planning Commission: 7
Number on Planning Staff: 1

Planning Director:
Planning Commission Chairman:

Peter K. Williamson
Eugene Erhardt

SCOTTS MILLS - Population: 245

P. O. Box 38
Scotts Mills, OR 97375
873-2048

Planning Director:
Planning Commission Chairman:

Marion County

Number on Planning Commission: 7

Virgil Hicks
Robert Glasscock

SEASIDE - Population: 4,900

851 Broadway
Seaside, OR 97138
738-5511

CTIC Consultant:
Planning Commission Chairman:

Clatsop County

Number on Planning Commission: 9
Number on Planning Staff: 1

Dick Pearson
Helen Gaston

SENECA - Population: 390

P. O. Box 208
Seneca, OR 97873
542-2161

Planning Commission Chairman:

Grant County

Number on Planning Commission: 5

LeRoy Seehart

SHADY COVE - Population: 1,085

P. O. Box 1122
Shady Cove, OR 97539
878-2225

Planning Consultant:
Planning Commission Chairman:

Jackson County

Number on Planning Commission: 7

D. Lorin Jacobs
Herbert E. Morris

SHANIKO - Population: 30

P. O. Box 17
Shaniko, OR 97057
475-2688

Mayor:

Wasco County

Dave Gastman

SHERIDAN - Population: 2,360

139 N.W. Yamhill
Sheridan, OR 97378
843-2347

Planning Commission Chairman:

Yamhill County

Jan Wepster

SHERWOOD - Population: 2,160

P. O. Box 167
Sherwood, OR 97140
625-5522

Planning Director:
Planning Commission Chairman:

Washington County

Number on Planning Commission: 7
Number on Planning Staff: 2

Todd Dugdale
Clyde List

SILETZ - Population: 900

P. O. Box 318
Siletz, OR 97380
444-2521

Planning Commission Chairman:

Lincoln County

Number on Planning Commission: 6

Leroy Yoder

SILVERTON - Population: 5,480

306 S. Water
Silverton, OR 97381
873-5321

Planning Director:
Planning Commission Chairman:

Marion County

Number on Planning Commission: 7
Number on Planning Staff: 1

Karsten Sjoli
Don Lowe

SISTERS - Population: 810

P. O. Box 37
Sisters, OR 97759
549-6022

Planning Director:
Planning Commission Chairman:

Deschutes County

Number on Planning Commission: 7

Lorin Morgan
Mike Reed

SODAVILLE - Population: 190

38087 Middle Ridge Drive
Lebanon, OR 97355

Mayor:

Linn County

Rolfe Stearns

SPRAY - Population: 210

Spray, OR 97874
468-2254

Mayor:

Wheeler County

James Bowler

SPRINGFIELD - Population: 42,000

Lane County

4th & North "A" Street
Springfield, OR 97477
726-3759

Number on Planning Commission: 7
Number on Planning Staff: 4

Planning Director:
Planning Commission Chairman:

Richard D. Johnson
Robert Adams

STANFIELD - Population: 1,350

Umatilla County

P. O. Box 368
Stanfield, OR 97875
449-3831

Number on Planning Commission: 5

Planning Commission Chairman:

Lois Wikstrand

STAYTON - Population: 4,460

Marion County

362 N. Third
Stayton, OR 97383
769-3425

Number on Planning Commission: 9

Planning Director:
Planning Commission Chairman:

James Campbell
Wes Smith

SUBLIMITY - Population: 1,150

Marion County

P. O. Box 146
Sublimity, OR 97385
769-5475

Number on Planning Commission: 7

Planning Commission Chairman:

Doug Denson

SUMMERVILLE - Population: 115

Union County

Summerville, OR 97876
534-2035

Mayor:

Cecil McDonald

SUMPTER - Population: 140

Baker County

P. O. Box 518
Sumpter, OR 97877
894-2314

Number on Planning Commission: 5

Planning Commission Chairman:

Pat Schultz

SUTHERLIN - Population: 4,590

P. O. Box 459
Sutherlin, OR 97879
459-2856

Planning Director:
Planning Commission Chairman:

Douglas County

Number on Planning Commission: 7

Ron Redmond
Gilbert Leinonen

SWEET HOME - Population: 7,250

1140 12th Avenue
Sweet Home, OR 97386
367-5128

Planning Director:
Planning Commission Chairman:

Linn County

Number on Planning Commission: 7

R. Scott Pemble
Dick Meyer

TALENT - Population: 2,675

P. O. Box 445
Talent, OR 97540
535-2015

Planning Director:
Planning Commission Chairman:

Jackson County

Number on Planning Commission: 9
Number on Planning Staff: 3

David M. Doerter
Penny Barker

TANGENT - Population: 530

P. O. Box 251
Tangent, OR 97389
928-1020

Planning Coordinators:
Planning Commission Chairman:

Linn County

Number on Planning Commission: 9
Number on Planning Staff: 2

Linn County Planning Department
Joe Jacob

THE DALLES - Population: 11,400

313 Court Street
The Dalles, OR 97058
296-5481

Planning Director:
Planning Commission Chairman:

Wasco County

Number on Planning Commission: 7
Number on Planning Staff: 3

Kathy Hunter
Bill Booth

TIGARD - Population: 13,500

P. O. Box 23397
Tigard, OR 97223
639-4171

Planning Director:
Planning Commission Chairman:

Washington County

Number on Planning Commission: 9
Number on Planning Staff: 7

Aldace Howard
Frank Tepedino

TILLAMOOK - Population: 4,300

1902 Third Street
Tillamook, OR 97141
842-7797

Planning Director:
Planning Commission Chairman:

Tillamook County

Number on Planning Commission: 7
Number on Planning Staff: 1

Denyse McGriff
Willard Berry

TOLEDO - Population: 3,450

P. O. Box 220
Toledo, OR 97391
336-2247

Planning Director:
Planning Commission Chairman:

Lincoln County

Number on Planning Commission: 7
Number on Planning Staff: 1

Garrett Smith
Don Broyles

TROUTDALE - Population: 3,520

104 S.E. Kibling
Troutdale, OR 97060
665-5175

Planning Director:
Planning Commission Chairman:

Multnomah County

Number on Planning Commission: 9
Number on Planning Staff: 2

Ed Murphy
Charles Pulliam

TUALATIN - Population: 5,930

18880 S.W. Martinazzi Avenue
Tualatin, OR 97062
638-6891

Community Development Director:

Washington County

Number on Planning Staff: 2

Winslow Brooks

TURNER - Population: 1,150

P. O. Box 405
Turner, OR 97392
743-2155

Planning Commission Chairman:

Marion County

Number on Planning Commission: 7
Number on Planning Staff: 2

John Mickey

UKIAH - Population: 330

P. O. Box 128
Ukiah, OR 97880
427-3281

Planning Commission Chairman:

Umatilla County

Number on Planning Commission: 4

Dave Price

UMATILLA - Population: 2,920

P. O. Box 130
Umatilla, OR 97882
922-3226

Planning Director:
Planning Commission Chairman:

Umatilla County

Number on Planning Commission: 7
Number on Planning Staff: 1

Jack Palmer
Marilyn Sorenson

UNION - Population: 2,160

P. O. Box 529
Union, OR 97883
562-5197

Planning Commission Chairman:

Union County

Number on Planning Commission: 9

Dona Jacob

UNITY - Population: 220

P. O. Box 98
Unity, OR 97884
446-3421

Planning Commission Chairman:

Baker County

Number on Planning Commission: 4

H. Ray Straton

VALE - Population: 1,900

252 "B" Street, W.
Vale, OR 97918
473-3133

Planning Commission Chairman:

Malheur County

Number on Planning Commission: 7

Position Vacant

VENETA - Population: 2,600

P. O. Box 458
Veneta, OR 97487
935-2191

Planning Director:
Planning Commission Chairman:

Lane County

Number on Planning Commission: 5
Number on Planning Staff: 1

Dave W. Kinney
Walt Bechtol

VERNONIA - Population: 1,810

919 Bridge Street
Vernonia, OR 97064
429-5291

Planning Commission Chairman:

Columbia County

Number on Planning Commission: 7

Darrold Proehl

WALDPORT - Population: 1,250

P. O. Box "K"
Waldport, OR 97394
563-3561

Planning Commission Chairman:

Lincoln County

Number on Planning Commission: 6

Philip Smith

WALLOWA - Population: 990

P. O. Box 1
Wallowa, OR 97885
886-2422

Planning Commission Chairman:

Wallowa County

Number on Planning Commission: 6

Joseph Town

WARRENTON - Population: 2,500

P. O. Box 250
147 S.W. Main
Warrenton, OR 97146
861-2233

Planning Director:
Planning Commission Chairman:

Clatsop County

Number on Planning Commission: 7

Number on Planning Staff: 1

Donald E. Lampi
Vern Davis

WASCO - Population: 410

P. O. Box 382
Wasco, OR 97065
442-5515

Planning Commission Chairman:

Sherman County

Number on Planning Commission: 6

Number on Planning Staff: 1

Vernon Root

WATERLOO - Population: 175

Linn County

31058 4th, Waterloo
Lebanon, OR 97355
259-1054

Mayor:

Dorothy Wood

WEST LINN - Population: 11,600

Clackamas County

4900 Portland Avenue
West Linn, OR 97068
656-4211

Number on Planning Commission: 7

Planning Director:
Planning Commission Chairman:

David Richey
Lorene Lindas

WESTON - Population: 620

Umatilla County

P. O. Box 427
Weston, OR 97886
566-3313

Number on Planning Commission: 7

Planning Commission Chairman:

Ken Dauble

WHEELER - Population: 305

Tillamook County

P. O. Box 177
Wheeler, OR 97147
368-5767

Number on Planning Commission: 7
Number on Planning Staff: 1

Planning Commission Chairman:

Ed Johnson

WILLAMINA - Population: 1,445

Yamhill County

P. O. Box 628
Willamina, OR 97396
876-2242

Number on Planning Commission: 9

Planning Consultants:
Planning Commission Chairman:

Yamhill County Planning Department
Ray Herzberg

WILSONVILLE - Population: 2,380

Clackamas County

P. O. Box 220
Wilsonville, OR 97070
682-1011

Number on Planning Commission: 7
Number on Planning Staff: 2

Planning Director:
Planning Commission Chairman:

Robert H. Mahoney
Richard Drew

WINSTON - Population: 3,240

Douglas County

P. O. Box 750
Winston, OR 97496
679-6739

Number on Planning Commission: 7

Planning Commission Chairman:

Gary Spellman

WOOD VILLAGE - Population 2,410

Multnomah County

2055 N.W. 238th Drive
Troutdale, OR 97060
667-6211

Number on Planning Commission: 7

Planning Commission Chairman:

Rosemary Kitzhaber

WOODBURN - Population: 10,500

Marion County

270 Montgomery Street
Woodburn, OR 97071
981-7111

Number on Planning Commission: 8

Number on Planning Staff: 2

Planning Director:
Planning Commission Chairman:

John Fregonese
Dorryl Kelly

YACHATS - Population: 640

Lincoln County

P. O. Box 67
Yachats, OR 97498
547-3565

Number on Planning Commission: 9

Planning Commission Chairman:

Pamela Wise

YAMHILL - Population: 640

Yamhill County

P. O. Box 26
Yamhill, OR 97148
662-3511

Number on Planning Commission: 7

Planning Commission Chairman:

Walter Larkin

YONCALLA - Population: 890

Douglas County

P. O. Box 508
Yoncalla, OR 97499
849-2152

Number on Planning Commission: 7

Planning Commission Chairman:

Leroy Hopkins

COUNCIL OF GOVERNMENTS

District #1: Clatsop-Tillamook Intergovernmental Council
P. O. Box 488
Cannon Beach, Oregon 97110
436-1156

Director: Richard Pearson
Chairman: Joyce Williams
Number of Staff: 12

Counties: Clatsop and Tillamook

District #2: Metropolitan Service District
527 S. W. Hall
Portland, Oregon 97201
221-1646

Director: Rick Gustafson
Chairman: Mike Burton
Number of Staff: 80

Counties: Urbanized areas of Clackamas, Multnomah
and Washington Counties

District #3: Mid-Willamette Valley Council of Governments
400 Senator Building
220 High Street, N. E.
Salem, Oregon 97301
588-6177

Director: Alan Hershey
Chairman: Elvern Hall
Number of staff: 68

Counties: Marion, Polk and Yamhill

District #4: Oregon District 4 Council of Governments
460 S. W. Madison - #7
Corvallis, Oregon 97330
757-6851

Director: William Hagman
Chairman: Andy Zedwick
Number of staff: 9

Counties: Benton, Lincoln and Linn

District #5: Lane Council of Governments
125 E. 8th Avenue
Eugene, Oregon 97401
687-4283

Director: Tom Jenkinson
Chairman: Vern Meyers
Number of staff: 43

Counties: Lane

District #6: Umpqua Regional Council of Governments
Room 101, County Courthouse
Roseburg, Oregon 97470
672-3311, Ext. 233

Director: Paul Howard
Chairman: Charles Glade
Number of staff: 25

Counties: Douglas

District #7: Coos-Curry Council of Governments
P. O. Box 647
1975 McPherson
North Bend, Oregon 97459
756-2563

Director: Sandra Diedrich
Chairman: Robert Pierce
Number of staff: 12

Counties: Coos and Curry

District #8: Rogue Valley Council of Governments
33 North Central Avenue, Suite 211
Medford, Oregon 97501
779-7555

Director: Dennis Lewis
Chairman: Don Laws
Number of staff: 15

Counties: Jackson and Josephine

District #9: Mid-Columbia Council of Governments
502 East Fifth
Courthouse Annex "B"
The Dalles, Oregon 97058
298-4101

Director: Michael O'Herron
Chairman: Jerry Routson
Number of staff: 25

Counties: Hood River, Sherman and Wasco

District #10: Central Oregon Intergovernmental Council
P. O. Box 575
Redmond, Oregon 97756
548-8163

Director: Denny Newell
Chairman: Ruth Burleigh
Number of staff: 27

Counties: Crook, Deschutes and Jefferson

District #11: No longer operation as a Council of Governments

District #12: East Central Oregon Association of Counties
920 S. W. Frazer
P. O. Box 1207
Pendleton, Oregon 97801
276-6732

Director: Wayne Schwandt
Chairman: Foster Odom
Number of staff: 40

Counties: Gilliam, Grant, Morrow, Umatilla and Wheeler

District #13: Blue Mountain Intergovernmental Council
Wallowa County Courthouse
Enterprise, Oregon 97828
426-4343

Director: John Beck
Chairman: Henry Bates
Number of staff: 1 (part-time)

Counties: Baker, Union and Wallowa

District #14: Ida-Ore Regional Planning & Development Association, Inc.
P. O. Box 311
Weiser, Idaho 83672

Director: Barton F. Bailey
President: Dr. Bart Westburg

DEPARTMENT OF LAND CONSERVATION AND DEVELOPMENT

Main Office: 1175 Court Street, Salem, Oregon 97310

Main Switchboard and Information
Toll Free Information

378-4926
(800)452-7813

Director	W. J. Kvarsten	378-8644
Deputy Director	James F. Ross	4928
Executive Secretary	Karen Ritchey	4215
Executive Assistant	Pam Collins	8645
Information Coordinator	Roger Kirchner	4929
Library	Audra Oliver & Dee Iltis	2980
Field Division Manager	Eldon Hout	4933
Plan Review Team Supervisor	Jim Knight	2973
Plan Review Specialist	Claire Puchy	8646
Plan Review Specialist	Ron Eber	5454
Plan Review Specialist	Lloyd Chapman	4932
Program Division Manager	Nancy Tuor	4097
Coastal Management		
Program Supervisor	Neal Coenen	5453
Coastal Specialist	Don Oswalt	2977
Coastal Specialist	Jon Christenson	2979
Landsat Coordinator	Kenneth Hansen	2978
Research & Policy		
Division Supervisor	Dick Mathews	2976
Research & Policy		
Division Specialist	Roz Shirack	2976
State Agency Coordinator	Jim Claypool	4098
Administrative Services		
Division Manager	John Vaughn	5881
Accounting	Ana Green	8067
Personnel	Don Poitras	5452
Support Supervisor	Karen Minns	2573
Word Processing Center		4931
Appeals Coordinator	Ed Rochette	8354/4095

Field Offices:

Salem Field Representative	Craig Greenleaf	378-4921
LaGrande Field Representative	James Kennedy	963-2171 Ext. 344
Medford Field Representative	Mel Lucas	776-6084
Newport Field Representative	Bob Cortright (North Coast)	265-8869
	Glen Hale (South Coast)	
Portland Field Representative	Linda MacPherson	229-6068
Bend Field Representative	Brent Lake	389-2253

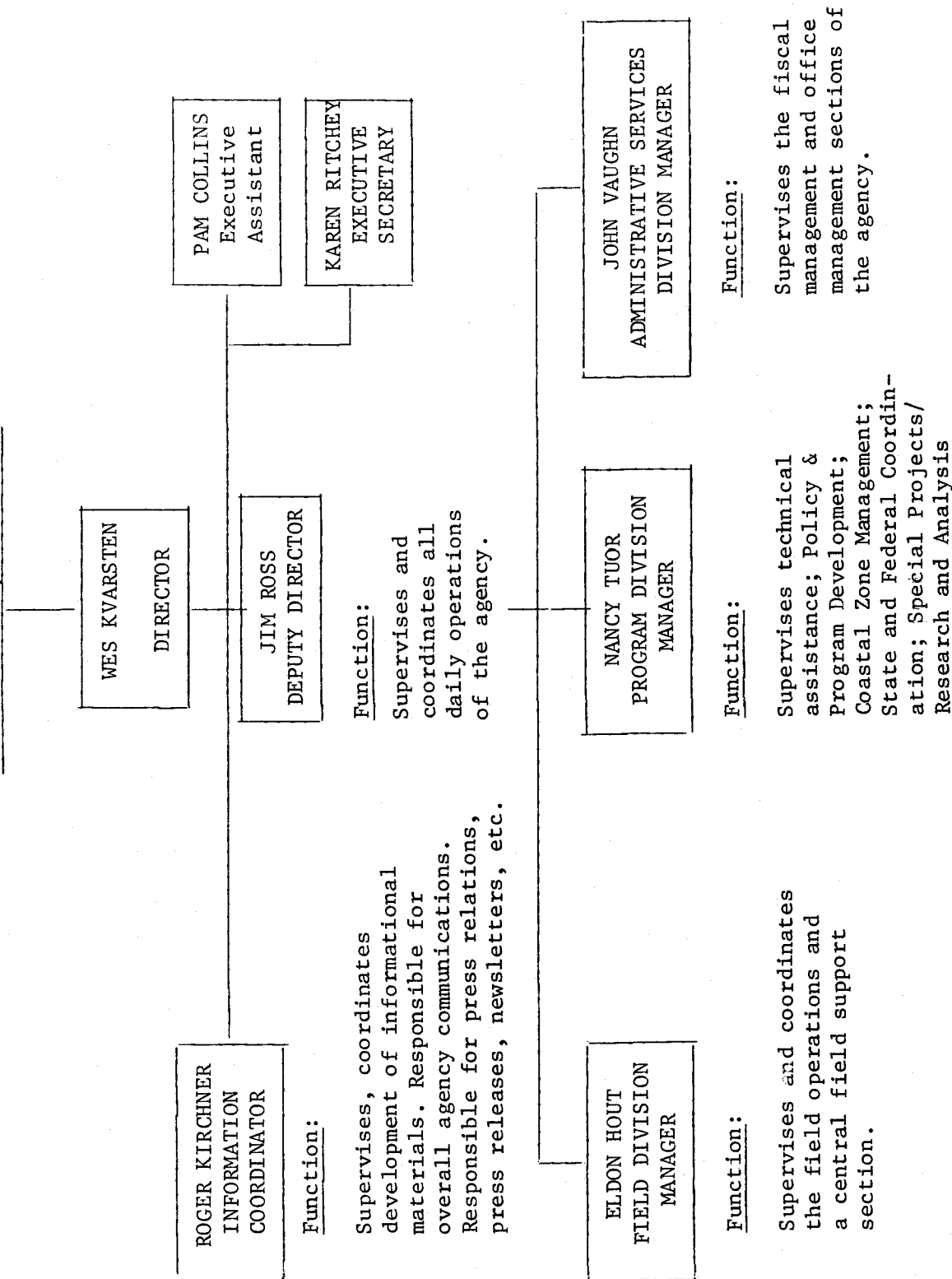
LAND CONSERVATION AND DEVELOPMENT COMMISSION

At the state level the comprehensive planning programs are organized under a seven-member commission appointed by the Governor. Names and addresses for the commissioners are given below. The commission is responsible for overall policy and direction of the state program. The Department of Land Conservation and Development is the agency that administers the program. An organizational chart and list of contact persons within the department are included on the following pages.

<u>Commissioner</u>	<u>Address</u>	<u>Date Term Expires</u>
Richard Gervais (Chairman) Businessman	437 Drake Road Bend, Oregon 97701 389-5302	June 30, 1983
Loren Jacobs (Vice Chairman) Architect	1256 Eureka Circle Medford, Oregon 97501 779-5237	June 30, 1982
Shirley Ekker Hood River County Commissioner	1619 Orchard Road Hood River, Oregon 97031 386-2745	June 30, 1983
Randy Smith Farmer/Rancher	18955 Bridgeport Road Dallas, Oregon 97338 787-3573	June 30, 1982
Anne W. Squier Biologist	5647 S. E. 38th Portland, Oregon 97202 771-1998	June 30, 1980
Jon D. Dowers Banker	2310 Commercial St. North Bend, Oregon 97459 756-6621	June 30, 1980
John R. Faust, Jr. Attorney	6429 S.W. Burlingame Place Portland, Oregon 97201 226-7321	June 30, 1981

DEPARTMENT OF LAND CONSERVATION AND DEVELOPMENT

DICK GERVAIS, CHAIRMAN



UNIVERSITY PLANNING RESOURCE PERSONNEL

Oregon State University, Corvallis, Oregon 97331

Extension Service

Community Resource Development Staff

Dr. Russ Youmans, Director
Western Regional Rural Development Center
Extension Hall 307H
754-3621

Bill Rompa, Rural Development Specialist
Extension Hall 228
754-2942

Dr. Bruce Weber, Extension Economist
Extension Hall 240
754-4821

Dr. Fred Obermiller, Economic Development Specialist
Extension Hall 232A
754-2942

Land Resource Management and Training Program

Dr. James R. Pease, Land Resource Management Specialist
Dr. Philip L. Jackson, Land Resource Management Specialist
Marvin E. Gloege, Land Use Training Specialist
Wilkinson Hall 202
754-3141

Extension Energy

Dr. Owen Osborne, Extension Energy Specialist
Dearborn Hall 114
754-3004

Department of Geography (Resource Planning Program)

Dr. Richard M. Highsmith, Chairman
Wilkinson Hall 202
754-3141

Dr. A. Jon Kimerling, Director
Cartographic Service
Wilkinson Hall 202
754-3141

Environmental Remote Sensing Applications Laboratory (ERSAL)

Dr. Barry Schrump, Director
R. Jay Murray, Research Associate
Dr. Tony Lewis, Research Associate
9 Withycombe Hall
754-3056 or 754-2204

University of Oregon, Eugene, Oregon 97403

Bureau of Governmental Research and Service
P. O. Box 3177
686-5232

Kenneth Tollenaar, Director
Donald N. Johnson, Associate Director
Mark Westling, Planning and Public Works
Robert Keith, Planning Consultant
Karen M. Seidel, Research Associate
James Mattis, Legal Consultant
Sandra Arp, Legal Assistant
Katherine Tri, Research Assistant
Orval Etter, Legal Consultant
Marvin E. Gloege, Land Use Training Specialist

Department of Urban and Regional Planning

Dr. David Povey, Chairman
Dr. Richard Ragatz, Housing and Recreational Land Development
Dr. Dean Runyan, Small Town Planning
Maradel Gale, Environmental, Legal and Administrative Planning

Portland State University, P. O. Box 751, Portland, Oregon 97207

Center for Population Research and Census

Dr. Edward Schafer, Director
Patricia Leighton, Program Manager
Bill Barber, Census and Survey Coordinator
229-3922

Department of Urban Studies

Dr. Kenneth J. Dueker, Director of Urban Studies and
Assistant Dean of Urban Affairs
Linda Robinson, Research Assistant
229-4043

SELECTED STATE AGENCIES

Department of Economic Development

Roger Eiss
921 S.W. Washington, Room 425
Portland, OR 97205
229-5535

Department of Energy

Marsha Mackie
108 Labor & Industries Building
Salem, OR 97310
378-8327

Department of Environmental Quality

Bob Jackman
522 S.W. Fifth Avenue
P. O. Box 1760
Portland, OR 97207
229-6403

Department of Fish & Wildlife

Jim Lauman
1634 S.W. Alder Street
Portland, OR 97208
229-5678

Department of Forestry

Robert Brown
2600 State Street
Salem, OR 97310
378-2562

Department of Geology & Mineral Industries

Herb Schlicker
1069 State Office Building
Portland, OR 97201
229-5580

Department of Transportation

Parks & Recreation Branch

Wally Hibbard
525 Trade Street N.E.
Salem, OR 97310
378-5019

Program & Policy Department

Kathleen Carter
513 Transportation Building
Salem, OR 97310
378-8271

Department of Water Resources

Neil Peterson
555 13th Street N.E.
Salem, OR 97310

Division of State Lands

Earl Johnson
1445 State Street
Salem, OR 97310
378-3805

Housing Division

Bob Clay
102 Labor & Industries Building
Salem, OR 97310
378-4343

Intergovernmental Relations Division

Jack Carter
Room 306, State Library
State Library Building
Salem, OR 97310
378-4367

Oregon State Health Division

Doug Pike
1400 S. W. Fifth Avenue
Portland, OR 97201
229-5861

Public Utility Commission

Dave Astle and Chuck Allen
300 Labor & Industries Building
Salem, OR 97310
378-6611

State Marine Board

Paul Donheffner
3000 Market Street
Salem, OR 97310
378-8587

State Soil & Water Conservation Commission

Bud Bailey
1015 13th Street
Salem, OR 97310
378-3810

PROFESSIONAL ASSOCIATIONS AND ADVISORY GROUPS

American Planning Association - Oregon Chapter

Richard Ragatz, President
3660 Donald Street
Eugene, OR 97405
686-3674 or 686-3635

Association of Oregon Counties

Gordon Fultz, Executive Assistant (Land Use Planning)
1201 Court Street, N.E.
P. O. Box 12729
Salem, OR 97309
585-8351

Association of Oregon Industries

Ken Cannon, Assistant General Counsel (Land Use Planning)
149 Court Street, N.E.
Salem, OR 97309
588-0050

Citizen Involvement Advisory Committee (CIAC)

Jim McCreight, Chairman
State of Oregon CIAC Committee
1175 Court Street
Salem, OR 97309
378-4096

Home-Builders Association

Home-Builders Association of Lane County

John Bennett, Director
3282 Gateway
Springfield, OR 97477
746-2523

Home-Builders Association of Metropolitan Portland

Burton Weast, Director
Planning and Governmental Affairs
3140 N.E. Broadway
Portland, OR
288-0121

Home-Builders Associations

Home-Builders Association of Salem

Eric Meurer, Executive Assistant
Planning and Governmental Affairs
569 Union N.E.
Salem, OR 97301
399-1500

Oregon State Home-Builders Association

Fred VanNatta, Executive Vice-President
565 Union N.E.
Salem, OR 97301
378-9066

Other Home-Builders Association Offices

Albany	928-5159	Hermiston	567-9051
Astoria	325-1632	Klamath Falls	884-4666
Bend	382-1011	Medford	773-7543
Corvallis	757-0566	Newport	265-8591
Grants Pass	479-3924	Roseburg	673-3711

League of Oregon Cities

Michael Huston, Senior Staff Member (Land Use Planning)
1201 Court Street N.E.
P. O. Box 928
Salem, OR 97301
588-6466

League of Women Voters of Oregon

Norma Jean Germond, President
495 State Street, Suite 212
Salem, OR 97301
851-5722

Audrey Jackson, Land Use Planning Chairman
Rt. 2, Box 123
Hillsboro, OR 97123

Oregon Business Planning Council

Kathy Keene, Director
1178 Chemekata N.E.
Salem, OR
370-8112

Oregon Environmental Council

Judy Roumps, Assistant Director
Mary Buel, Governmental Affairs Coordinator
2637 S.W. Water Avenue
Portland, OR 97201
222-1963

Oregon Coastal Zone Management Association, Inc.

P. O. Box 1033
Newport, OR 97365
265-8918 or 265-6651

1,000 Friends of Oregon

Henry Richmond, Executive Director
519 S.W. Third, Suite 407
Portland, OR 97204
223-4396

ADDITIONAL DIRECTORIES

Oregon Blue Book

Secretary of State
State Capitol Building
Salem, OR 97310
378-4139

Cost: \$3.00

The Conservation Directory

National Wildlife Federation
1412 16th Street N.W.
Washington, D. C. 20036

Environment: A List

Extension Business Office (Stockroom)
Oregon State University Extension Service
Corvallis, OR 97331
754-2755

Cost: \$3.00

1978 Roster of Oregon Planners

Richard Ragatz, President
American Institute of Planners
3660 Donald Street
Eugene, OR 97405
686-3674 or 686-3635

Cost: \$5.00

Directory of Natural Resource Planning Agencies

Pacific Northwest Region
Volume I - Regional Agencies
Volume II - State of Oregon

Urban and Rural Lands Committee
Pacific Northwest River Basins Commission
P. O. Box 908
Vancouver, Washington 98660
(206) 694-2581 or (503) 285-0467

OREGON STATE UNIVERSITY LIBRARIES



12 0140007085

Extension Service, Oregon State University, Corvallis, Henry A. Wadsworth, director. This publication was produced and distributed in furtherance of the Acts of Congress of May 8 and June 30, 1914. Extension work is a cooperative program of Oregon State University, the U. S. Department of Agriculture, and Oregon counties. Extension invites participation in its programs and offers them equally to all people, without discrimination.
