

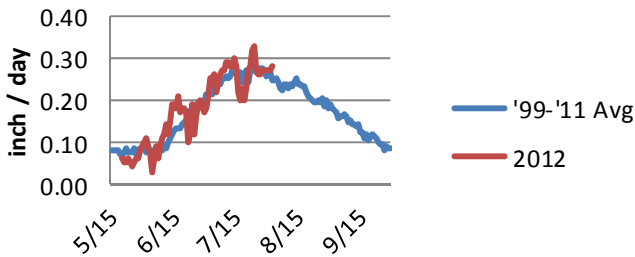
Potato Bytes

Klamath Basin Research and Extension Center
6941 Washburn Way
Klamath Falls, Oregon 97603
(tel)541-883-4590 (fax) 541-883-4596
<http://oregonstate.edu/dept/kbrec>



Brian A. Charlton, Research and Extension Agent -541-591-1255

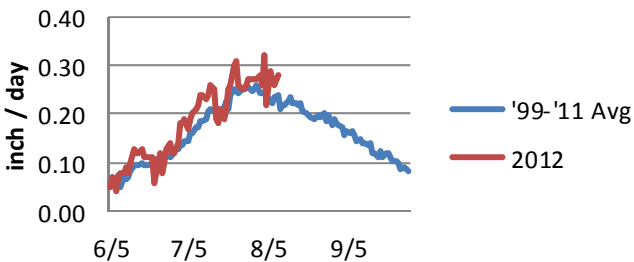
**Potato Crop Water Use
Early Planting**



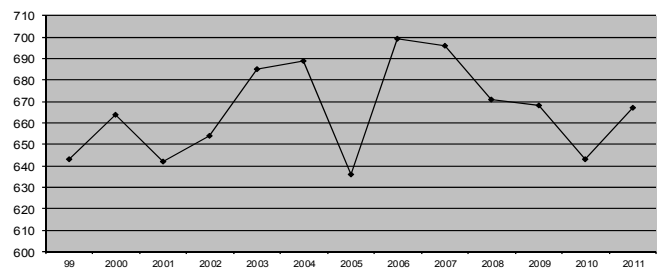
Inside this Issue:

- Crop Water Use: 1
- Soil Degree Data: 2
- Soil Degree Data: 3
- Insect Trap Report: 4

**Potato Crop Water Use
Late Planting**



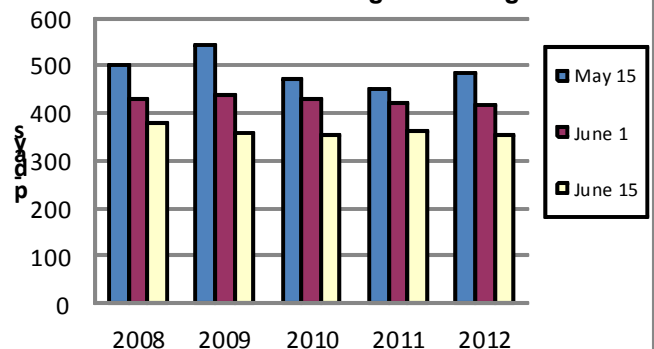
**Historical P-day Accumulation
June 1 -September 15**



KBREC

Actual Water Use:	Inches	
Planting Date:	Early	Late
Last 3 days:	0.81	0.81
Last 7 days:	1.90	1.90
Last 14 days:	3.79	3.77
Estimated Water Use:		
Next 7 days	1.89	1.89

**Total P-Day Accumulation
Estimated Emergence - August 9**



Potato Bytes

Klamath Basin Research and Extension Center
6941 Washburn Way
Klamath Falls, Oregon 97603
(tel)541-883-4590 (fax) 541-883-4596
<http://oregonstate.edu/dept/kbrec>



Brian A. Charlton, Research and Extension Agent -541-591-1255

Soil Degree-Day Accumulation -- KBREC and IREC 2012

For Root-knot nematode control, Vydate applications should begin at 800 degree-days (DD_{5C}). To estimate that date, add the number of Total degree-days "Total" on the day you planted to 800. Where that value occurs in the "Total" column estimates the date on which 800 DD^{5C} will occur in that field. It is recommended that applications continue every 14 days until harvest.

For Stubby-root nematode control, Vydate applications should begin at 0 degree-days (at planting) and followed by an application at the first full irrigation following emergence. An additional application is recommended at 800 degree-days (DD_{5C}).

Date	KBREC DD _{5C}		IREC DD _{5C}		Date	KBREC DD _{5C}		IREC DD _{5C}		Date	KBREC DD _{5C}		IREC DD _{5C}		Date	KBREC DD _{5C}		IREC DD _{5C}	
	Daily	Total	Daily	Total		Daily	Total	Daily	Total		Daily	Total	Daily	Total		Daily	Total	Daily	Total
4/15/12	2.2	2.2	2.2	2.2	5/11/12	8.1	164.5	8.8	163.7	6/6/12	6.9	394.2	10.5	444.6	7/2/12	12.2	663.1	16.2	782.0
4/16/12	3.9	6.1	3.4	5.6	5/12/12	8.6	173.0	10.1	173.7	6/7/12	7.4	401.6	10.9	455.5	7/3/12	12.4	675.6	16.6	798.6
4/17/12	3.2	9.3	3.1	8.7	5/13/12	9.5	182.5	10.4	184.1	6/8/12	7.3	408.9	10.7	466.2	7/4/12	12.1	687.6	16.1	814.6
4/18/12	3.2	12.5	3.1	11.8	5/14/12	10.2	192.7	10.7	194.9	6/9/12	7.7	416.6	10.4	476.6	7/5/12	12.4	700.0	16.6	831.3
4/19/12	4.2	16.7	4.3	16.1	5/15/12	10.8	203.5	11.3	206.2	6/10/12	8.3	424.8	10.6	487.2	7/6/12	12.7	712.7	17.0	848.2
4/20/12	5.6	22.3	5.5	21.6	5/16/12	10.7	214.2	11.1	217.3	6/11/12	9.6	434.5	12.2	499.5	7/7/12	13.1	725.9	16.8	865.0
4/21/12	6.9	29.2	6.5	28.1	5/17/12	9.8	224.0	10.3	227.6	6/12/12	10.6	445.0	13.4	512.9	7/8/12	13.8	739.7	17.3	882.3
4/22/12	7.6	36.8	7.3	35.4	5/18/12	8.2	232.1	9.5	237.1	6/13/12	10.6	455.7	13.3	526.2	7/9/12	14.4	754.1	18.3	900.6
4/23/12	7.6	44.4	7.4	42.8	5/19/12	8.5	240.7	10.1	247.2	6/14/12	11.1	466.8	13.4	539.6	7/10/12	14.5	768.6	18.9	919.4
4/24/12	7.7	52.1	7.6	50.4	5/20/12	9.0	249.7	11.0	258.2	6/15/12	11.5	478.2	13.5	553.0	7/11/12	14.8	783.3	18.9	938.3
4/25/12	6.7	58.8	6.8	57.2	5/21/12	9.5	259.1	11.5	269.7	6/16/12	12.0	490.3	13.5	566.5	7/12/12	15.0	798.3	19.9	958.2
4/26/12	6.1	64.9	6.0	63.2	5/22/12	8.7	267.8	10.8	280.5	6/17/12	12.6	502.9	13.7	580.2	7/13/12	14.6	812.9	18.4	976.6
4/27/12	5.2	70.1	5.2	68.4	5/23/12	8.3	276.1	10.3	290.8	6/18/12	12.3	515.1	13.0	593.3	7/14/12	14.4	827.3	17.5	994.1
4/28/12	5.7	75.9	5.6	74.0	5/24/12	7.9	284.0	9.4	300.2	6/19/12	11.2	526.3	12.5	605.8	7/15/12	14.1	841.3	16.8	1010.9
4/29/12	6.9	82.8	6.6	80.7	5/25/12	6.5	290.5	8.4	308.6	6/20/12	11.3	537.6	13.1	618.9	7/16/12	13.3	854.6	16.0	1026.9
4/30/12	7.3	90.1	7.4	88.0	5/26/12	6.4	296.9	8.2	316.8	6/21/12	11.7	549.3	13.9	632.9	7/17/12	12.4	867.0	14.3	1041.2
5/1/12	6.2	96.3	6.6	94.7	5/27/12	6.7	303.7	8.7	325.5	6/22/12	10.8	560.1	13.2	646.1	7/18/12	12.1	879.1	14.6	1055.8
5/2/12	5.4	101.7	5.9	100.5	5/28/12	7.5	311.2	10.5	336.1	6/23/12	9.3	569.3	12.0	658.1	7/19/12	12.1	891.2	14.8	1070.6
5/3/12	5.5	107.2	6.1	106.7	5/29/12	8.2	319.4	11.7	347.7	6/24/12	8.9	578.2	11.9	670.0	7/20/12	12.4	903.6	14.8	1085.4
5/4/12	5.8	112.9	5.9	112.6	5/30/12	9.1	328.5	12.1	359.9	6/25/12	9.1	587.3	12.1	682.1	7/21/12	13.0	916.6	15.2	1100.6
5/5/12	5.4	118.3	5.5	118.0	5/31/12	10.3	338.8	12.9	372.8	6/26/12	8.8	596.1	12.4	694.5	7/22/12	14.0	930.6	16.1	1116.6
5/6/12	6.4	124.8	6.3	124.3	6/1/12	11.1	349.9	13.5	386.3	6/27/12	9.8	605.9	13.0	707.5	7/23/12	14.1	944.7	16.5	1133.1
5/7/12	7.2	132.0	6.9	131.2	6/2/12	11.5	361.4	13.4	399.7	6/28/12	10.5	616.3	13.8	721.3	7/24/12	14.4	959.1	17.3	1150.5
5/8/12	7.8	139.8	7.5	138.7	6/3/12	10.4	371.8	12.7	412.4	6/29/12	11.3	627.6	14.5	735.8	7/25/12	14.3	973.4	17.7	1168.2
5/9/12	8.6	148.4	8.4	147.1	6/4/12	8.9	380.7	11.5	423.9	6/30/12	11.4	639.1	14.8	750.6	7/26/12	14.7	988.1	17.7	1185.8
5/10/12	8.0	156.4	7.8	154.9	6/5/12	6.6	387.3	10.2	434.1	7/1/12	11.9	651.0	15.2	765.9	7/27/12	14.7	1002.8	17.6	1203.5

Potato Bytes

Klamath Basin Research and Extension Center
 6941 Washburn Way
 Klamath Falls, Oregon 97603
 (tel) 541-883-4590 (fax) 541-883-4596
<http://oregonstate.edu/dept/kbrec>



Brian A. Charlton, Research and Extension Agent -541-591-1255

Date	KBREC DD _{5c}		IREC DD _{5c}	
	Daily	Total	Daily	Total
7/28/12	13.9	1016.6	17.1	1220.6
7/29/12	14.2	1030.9	17.1	1237.7
7/30/12	14.1	1044.9	16.8	1254.6
7/31/12	14.0	1059.0	18.9	1273.4
8/1/12	14.3	1073.2	19.2	1292.6
8/2/12	14.4	1087.6	19.0	1311.6
8/3/12	14.2	1101.8	18.7	1330.4
8/4/12	14.6	1116.5	18.9	1349.2
8/5/12	14.7	1131.1	18.7	1368.0
8/6/12	13.9	1145.1	18.5	1386.4
8/7/12	13.4	1158.5	18.0	1404.4
8/8/12	13.8	1172.3	18.0	1422.4
8/9/12	14.0	1186.2	17.8	1440.2

Potato Bytes

Klamath Basin Research and Extension Center
 6941 Washburn Way
 Klamath Falls, Oregon 97603
 (tel) 541-883-4590 (fax) 541-883-4596
<http://oregonstate.edu/dept/kbrec>



Brian A. Charlton, Research and Extension Agent - 541-591-1255

Insect Trap Report July 31 - August 7

Klamath County

TRAP	LOCATION	PTW	BLH	OLH	PSY
1	Anderson Rd., Merrill	0	0	47	1
2	Old Malin Hwy.	0	0	37	0
3	Pickett & Drazil, Malin	0	0	113	1
4	Lower Lake	0	0	203	4
5	Running Y	0	0	11	4
6	Caledonia	0	0	8	14
7	Tingley Lane	0	0	23	2

PTW: Potato Tuberworm
 BLH: Beet Leafhoppers
 OLH: Other Leafhoppers
 PSY: Psyllid

Modoc and Siskiyou

8	Perez Overhead	0	0	18	0
9	Road 101 Tulelake	0	0	62	0
10	Frog Pond 361	0	0	219	63
11	Southwest Sump	0	0	73	0
12	Frog Pond 345	0	0	68	0
13	Stateline and Akins	0	0	13	3
14	Ganger Road	0	0	86	0
15	Copic Bay	0	0	12	0

Aphid Traps

	Potato	GPA	Other	PSY	
1	Keno	27	0	570	5
2	Township South	96	0	596	1
3	Township North	18	0	113	2
4	East Malin	96	0	1067	3
5	South Poe Valley	17	0	486	1
6	Bonanza	2	0	230	0
7	Yonna Valley	8	0	39	0
8	Dairy	12	0	313	1
9	Swan Lake East	4	0	40	2
10	Swan Lake West	5	0	18	0

GPA: Green Peach Aphid

Potato Bytes

Klamath Basin Research and Extension Center
6941 Washburn Way
Klamath Falls, Oregon 97603
(tel)541-883-4590 (fax) 541-883-4596
<http://oregonstate.edu/dept/kbrec>



Brian A. Charlton, Research and Extension Agent -541-591-1255

Brian's Notes

Insect Trap Reports: Aphid populations have experienced a dramatic rise in recent weeks. Seed potato producers should implement control measures to minimize spread of aphid-vectored viruses.

Psyllids: The potato psyllid found several weeks ago tested negative for Liberibacter. While we are seeing psyllids with more regularity throughout the Basin this week, none of them are potato psyllid.