



# LIBRARIES

VOLUME 11  
FALL

NUMBER 2  
1996

## IN THIS ISSUE:

BOOT CAMP AT  
THE LIBRARY ..... 3

GROUNDBREAKING FOR THE  
VALLEY LIBRARY ..... 4

FOCUS ON A FRIEND ..... 10

DIRECTOR OF LIBRARIES  
ANNOUNCES RETIREMENT ... 11

BUILDING "ROOM TO  
GROW" ..... 12

FRIENDS DISTINGUISHED  
ACHIEVEMENT AWARD ..... 14

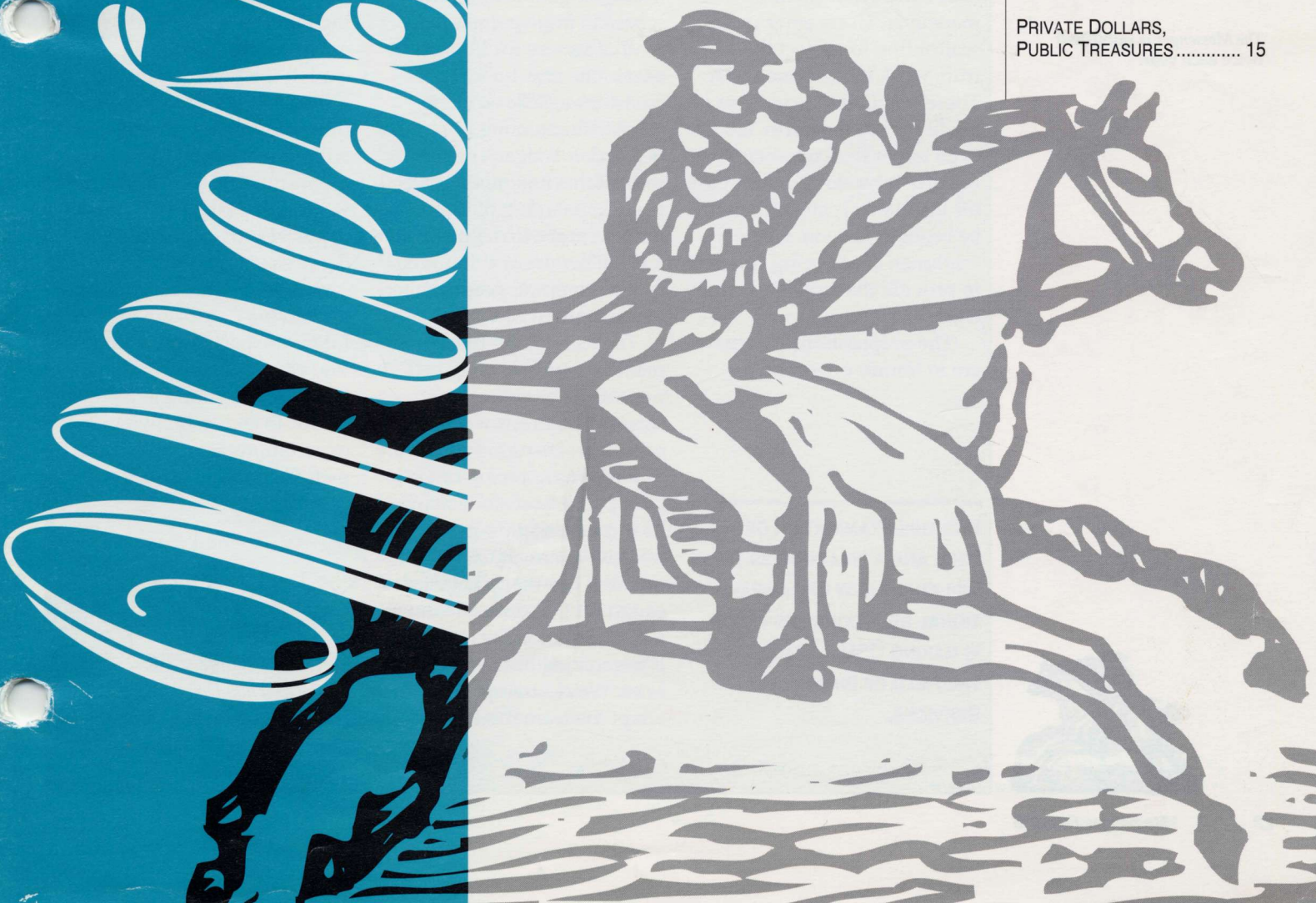
PRIVATE DOLLARS,  
PUBLIC TREASURES ..... 15



## GROUNDBREAKING FOR THE VALLEY LIBRARY

See page 4

Gladys Valley, whose family name the library will bear, was an honored guest and told the crowd that her grandmother, her mother and the rest of her family always believed that reading was an enriching experience, stating, "You can't read unless you have a library."





**OREGON STATE UNIVERSITY  
LIBRARIES**

The Valley Library,  
Main Campus, Corvallis

Marilyn Potts Guin Library,  
Hatfield Marine Science Center,  
Newport

**THE MESSENGER**

OSU Libraries  
Oregon State University  
121 The Valley Library  
Corvallis, OR 97331-4501  
(541) 737-2438

Melvin R. George  
*The Delpha and Donald Campbell  
University Librarian*

Marcia Griffin, *Editor*  
Cliff Dalton, *Assistant Editor*  
Photos by Gary Weber,  
*CMC Photo Service*

*The Messenger* is published  
twice each year.

## A NEW ERA IN LIBRARY OPERATION

**A**s I write this in late July, the change construction has wrought to the existing library is very obvious. There is excavation on the north, south and west of the building to make way for new walls and new spaces. The second floor entrance on the quad has been closed for some weeks and now the Jefferson Street entrance is a bit difficult to maneuver. Users enter under scaffolding to protect them from work being done above. There's a giant hole in front of the library to the north. It's even larger than necessary because it has to provide space for the giant six story crane to be brought in soon. Already, workmen are pouring concrete to provide the footing for the crane to move on.

The preparations for a new era in library operation are



*Melvin R. George*

obvious in the construction activities which will continue for the next two years. What isn't obvious are the preparations going on behind the scenes to implement a new kind of service for library users. The new building envisions a close working relationship among librarians, network managers, computer consultants and media specialists. The merging of these units in order to define a new level of service is a daunting task, with employees numbering more than 200.

The technology these staff members will be using to provide information services across the state as well as on campus is changing so rapidly that no single person can stay on top of it—let alone manage its implementation in a cost-effective manner. Consequently, like many businesses caught in the same dilemma, the Information Services unit is organizing itself along new lines. We're attempting to adapt the team model which

has been so successful for Hewlett Packard and others. Group dynamics in the team environment are proven to provide high motivation to staff, to assure quicker responses to changes in the external environment and in user demand, and to spread the responsibility for keeping abreast of technological change. The goal is to provide cost-effective, user-responsive services on the cutting edge of the information delivery field.

Although other universities are examining alternative staff organizations, OSU has gone further than most in attempting to create a staff and work environment which will fully exploit the potential the new Valley Library promises. It is this examination of need and a willingness to implement new organizational relationships which is making OSU a leader in the field of Information Services.

Those of you who contributed to the Campaign for the Library expected great things. You can be assured that OSU is doing everything in its power to assure that your expectations are met. No, not met. Exceeded!

*Melvin R. George*  
*The Delpha and Donald Campbell  
University Librarian*

IT IS THIS EXAMINATION OF  
NEED AND A WILLINGNESS TO  
IMPLEMENT NEW ORGANIZA-  
TIONAL RELATIONSHIPS WHICH  
IS MAKING OSU A LEADER IN  
THE FIELD OF INFORMATION  
SERVICES.



In many small, rural libraries around the state of Oregon, access to the Internet was only a dream until a few months ago. Staffed by volunteers as well as paid employees, many of these small libraries are funded by a combination of city or county funds, some even by bake sale contributions! All are struggling to find access to the famous information superhighway.

Enter project 'BOOT CAMP' - the brainchild of OSU librarians involved with a government education grant to make government information on compact disk readily available in user-friendly format. Savings from this successful three-year grant provided a computer, modem, laser printer, and a one year hook-up to the Internet for each of the 25 rural Oregon libraries participating in Boot Camp.

Representatives from 25 rural public libraries around Oregon came to campus last March to attend Boot Camp at the OSU Library. Participants learned how to access the World Wide Web and the banks of data available on networked CD-ROMs, and how to help their patrons use

the service. The two-day training session covered public access in general and government information in particular—from an introduction to software to issues of intellectual freedom. Participants also learned how to operate their new computers and at the end of the sessions, took their computers home with them!

Administrators at the State Library in Salem were so impressed by the successful government information project at OSU that not only did they provide support for the initial Boot Camp, but they expanded the project to include 25 additional public libraries. This project was also partially supported by the Portland library system, PORTALS.

News of this successful venture soon spread. Librarians from the University of California-Berkeley expressed interest in working with OSU to expand the project. Charlene Grass and Karyle Butcher, Associate University Librarians, recently traveled to Berkeley to work with their librarians and others from Harvard and Stanford, planning an expansion of OSU's initial work.

The Valley Library has also recently hired Stephen Mosley, a computer operations specialist, who will provide on-going training and support for the first Boot Camp attendees. A second Boot Camp session is already being planned for later this year. This project is viewed as a successful growth opportunity for rural libraries; to provide Internet displays for patrons who don't have home computers of their own.

REPRESENTATIVES FROM 25 RURAL PUBLIC LIBRARIES AROUND OREGON CAME TO CAMPUS LAST MARCH TO ATTEND BOOT CAMP AT THE OSU LIBRARY. PARTICIPANTS LEARNED HOW TO ACCESS THE WORLD WIDE WEB AND THE BANKS OF DATA AVAILABLE ON NETWORKED CD-ROMS, AND HOW TO HELP THEIR PATRONS USE THE SERVICE.

## RURAL OREGON LIBRARIES GO "ON-LINE"



## GROUND BREAKING FOR THE VALLEY LIBRARY AT OREGON STATE UNIVERSITY

It rained for three weeks straight prior to May 24—the date set for breaking ground on the new Valley Library.

Development Director, Cliff Dalton, fretted that the heavy equipment brought in for the ceremony would sink into the soggy ground, and he finally ordered 300 umbrellas for guests, thinking everyone would be drenched with rain.

However, on the appointed day, the sun broke through the clouds and bathed the Library quad in sunshine—setting the stage for a glorious event. Beginning with a formal dinner on the Library quad lawn, the two-day event also included a concert that evening, a multimedia presentation the following morning, and a picnic lunch served in the tent on the Library quad, prior to the

groundbreaking event itself on Friday, May 24.

Thursday evening's dinner honoring donors to the Library Campaign was a truly unique experience. Guests were bussed to the heart of campus and up to the entrance of a sparkling white tent on the Library lawn. Inside, crystal chandeliers hung from the ceiling, and, reminiscent of a summer garden wedding, the

GLADYS VALLEY, WHOSE NAME THE LIBRARY WILL BEAR, WAS AN HONORED GUEST. SPEAKING FOR HER LATE HUSBAND WAYNE AS WELL AS HERSELF, SHE SAID: "WE WERE GIVEN A GREAT DEAL BY OREGON STATE TO ENRICH OUR LIVES. I'M GLAD TO BE ABLE TO GIVE BACK...AND TO GIVE TO THOSE WHO ARE AFTER US."



OSU President Paul Risser and Gladys Valley.



*Construction update*



tables and chairs were draped in elegant white and adorned with flowers. (No one knew of the earlier rain-caused casualty—goat cheese hors d'oeuvres toppling to the soggy ground before they could be served!) A gourmet meal, complete with wine, was served on fine china to honored guests. This was a once in a lifetime opportunity, to dine in a tent on the Library quad in

the middle of campus—and no one even missed the goat cheese!

Following dinner, guests again boarded busses to the LaSells Stewart Center to enjoy the OSU Corvallis Symphony Pops concert, and witness Robert Bailey, Director of the Portland Opera, receive the third annual Friends of OSU Libraries Distinguished Achievement Award. Not only

did Bailey receive the award, he responded by entertaining the crowd with a resounding rendition of "Marian, the Librarian." Other special guest appearances were made by Roosevelt Credit and Gale Hazel, among others.

Friday morning, guests viewed a high-tech multimedia presentation illustrating how technology is advancing teach-

*(continued on next page)*



Left: Mel George, university librarian, thanks donors.

Above right: OSU Corvallis Symphony concert.

Below right: Roosevelt Credit, OSU alum and featured artist.



*Construction*





*Clockwise from upper left:  
Roosevelt Credit directing  
Pep Band.  
Gale Hazel, in concert.  
Gladys Valley at picnic lunch.  
A triumphant Mel George,  
university librarian, addresses  
the crowd.*

ing, research and extended education at OSU. Following the presentation, Library guests were bussed to the center of campus to enjoy a picnic lunch in the tent on the Library quad, entertained by the accomplished fiddle player, Starr McMullen and her group. Following the picnic, guests then gathered on the lawn for the ground breaking ceremony itself.

The OSU Pep Band played rousing music to set the tone, and OSU alum Roosevelt Credit amused the crowd with his antics directing the pep

band. Later, Credit sang the national anthem, and various dignitaries spoke from the podium. Gladys Valley, whose name the library will bear, was an honored guest and told the crowd that her grandmother, her mother and the rest of her family always believed that reading was an enriching experience, stating, "You can't read unless you have a library." Speaking for her late husband Wayne, as well as herself, she said: "We were given a great deal by Oregon State to enrich our lives. I'm glad to be able to give back...

and to give to those who are after us."

Then OSU President Paul Risser asked principal donors if their hard hats were in place. At the rousing cry of "Let's break some ground," six pieces of heavy equipment began to dig the earth on the Library quad, launching the \$40 million project—a long-held dream for thousands of friends, alums, parents and citizens of Oregon who helped raise the funds needed to rebuild and expand the former Kerr Library into the new Valley Library at Oregon State University.



*Quotes article*





Above: Guests enjoying dinner in the tent.  
Below: Karyle Butcher, associate university librarian, shows library guests "virtual reality."

*Quotus tributa*



Bob and Betty Lundeen  
break ground.



Sara and Bill Kimball break ground.



*Melomud*





AT THE ROUSING CRY OF "LET'S BREAK SOME GROUND," SIX PIECES OF HEAVY EQUIPMENT BEGAN TO DIG THE EARTH ON THE LIBRARY QUAD, LAUNCHING THE \$40 MILLION PROJECT—A LONG-HELD DREAM FOR THOUSANDS OF FRIENDS, ALUMS, PARENTS AND CITIZENS OF OREGON WHO HELPED RAISE THE FUNDS NEEDED TO REBUILD AND EXPAND THE FORMER KERR LIBRARY INTO THE NEW VALLEY LIBRARY AT OREGON STATE UNIVERSITY.



Betty Cameron at ground breaking.

*Connecting students*



# ALICE KATHRYN KIDDER EVANS

**B**read and butter pickles, the really good kind, are always home made. Preserved from cucumbers fresh off the vine, still warm from the morning sun. That's the way that Alice makes them.

Some of the best pickles you ever ate are made by a good friend of the OSU Libraries — Alice Kathryn Kidder Evans. Painstakingly sliced by hand and preserved from a time-honored recipe, Alice's pickles are savored by the lucky few recipients of the fruits of her

labor each summer. She also makes persimmon jam and cans her own tomato juice—although she ruefully admits that this annual canning activity takes its toll on her arthritic hands. "I seem to have more aches and pains these days," she says. In spite of this, Alice, now 94 years of age, still grows tomatoes and cucumbers in her garden every summer.

Born in 1902 in Portland, Oregon, Alice has some special memories of her early years. One of her earliest recollections is swinging in a hammock with

her little dog, Trixie. Trixie and she would swing together, eating a slice of bread and butter. First, Alice would take a bite and then little Trixie would take a bite.

Trixie and Alice were pals all during Alice's girlhood. Trixie finally passed away when Alice was in college.

Alice also remembers when her family moved to Sheridan, they rented a house along the water by a mill.

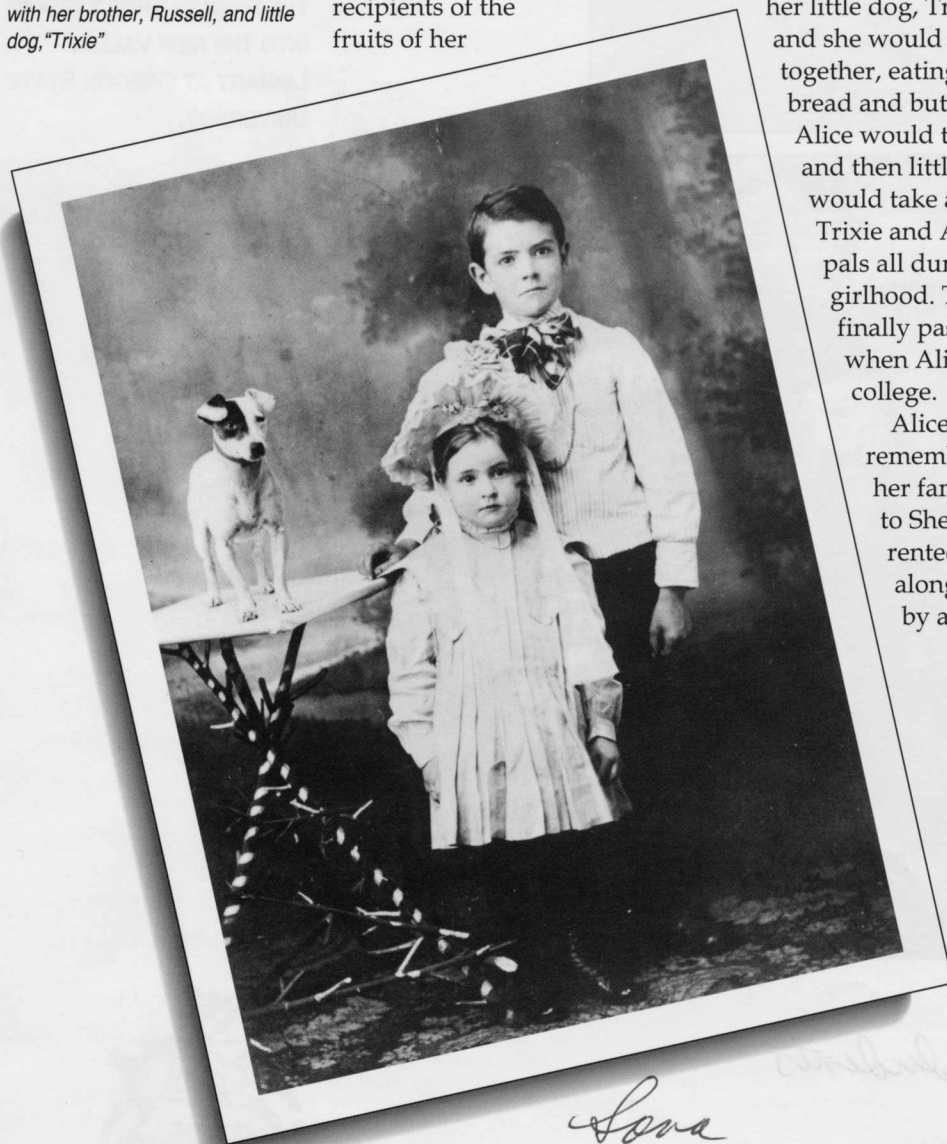
Indians used to drive by the house, and some would stop and sell baskets to her mother. One day, an Indian wanted the blue skirt Alice's mother was wearing, so her mother took it off and traded it for a couple of baskets!

After Alice grew up, she followed in her parents' and brother's footsteps by enrolling at Oregon Agricultural College in 1920. Taking a commercial course, Alice also played on the women's basketball team, earning a letter and receiving her coveted letterman's sweater in 1924. On the last day of school, Alice accompanied a friend to sign up for a teaching job. Alice decided to sign up, too, and it was she who got the job—teaching typing in Ashland. Her pupils won the state typing contest in 1925—held at her old alma mater. That day, Alice's stenography teacher gave her a hug and told her she always knew that Alice would make good—this, after only giving Alice a "C" in class.

Back in 1925, Alice earned \$1,200 a year teaching in Ashland. When she learned that they were paying more in California, she moved to Templeton where she earned \$1,800 for a year's teaching. Later she moved to Porterville, then to Santa Cruz, finally settling in San Jose, where she taught from 1928 to 1952.

Alice has always been a special friend to OSU. As a member of the President's Club and the Council of Regents, she funds a Presidential Scholarship each year, as well as providing annual gifts to the College of Business and the OSU Libraries. Her generosity will also establish the Alice Kathryn Kidder Grand Foyer in the new Valley Library.

*Alice Kathryn Kidder as a child, with her brother, Russell, and little dog, "Trixie"*



*Lona  
Kimball*



OSU's director of libraries has announced plans to retire, but before leaving, he will help organize a management team to oversee construction of the new \$40 million Valley Library project, announced Joy Hughes, associate provost for information services.

Melvin R. George, the Delpha and Donald Campbell University Librarian will retire on or before December 31. "Dr. George's distinguished career has recently been capped by the groundbreaking ceremony for The Valley Library, a state-of-the-art library and information commons which is now under construction and scheduled to be completed in two years," Hughes said. "As of August 1, he will wind down his many external leadership activities in preparation for his retirement and will serve as a consultant to a team which will manage The Valley Library."

Hughes said Karyle Butcher, associate university librarian for research and consulting services, will serve as interim library director, library building project director, and management team leader throughout the construction project.

Others named to the management team include Charlene Grass, associate university librarian for technical and automation services; Cliff Dalton, director of library development; and Shirley Scott, head of research and access services. Grass will take on some of Butcher's current management responsibilities. Dalton will add new duties



Melvin R. George

involved with the business and fiscal aspects of constructing and furnishing the building, and Scott will have responsibility for library program and service issues associated with the new construction.

George has served as OSU's director of libraries since 1984. During his tenure, the librarian's chair was endowed by the estate of Delpha and Donald Campbell, the Marilyn Potts Guin Library was built at OSU's Hatfield Marine Science Center in Newport, a wide variety of automated services were introduced by the OSU Libraries, and the new Valley Library was planned.

The campaign for OSU's new library building has resulted in the largest private donation ever made to a library building in an Oregon public university.

GEORGE HAS SERVED AS OSU'S DIRECTOR OF LIBRARIES SINCE 1984. DURING HIS TENURE, THE LIBRARIAN'S CHAIR WAS ENDOVED BY THE ESTATE OF DELPHA AND DONALD CAMPBELL, THE MARILYN POTTS GUIN LIBRARY WAS BUILT AT OSU'S HATFIELD MARINE SCIENCE CENTER IN NEWPORT, A WIDE VARIETY OF AUTOMATED SERVICES WERE INTRODUCED BY THE OSU LIBRARIES, AND THE NEW VALLEY LIBRARY WAS PLANNED.

## OSU'S DIRECTOR OF LIBRARIES ANNOUNCES RETIREMENT

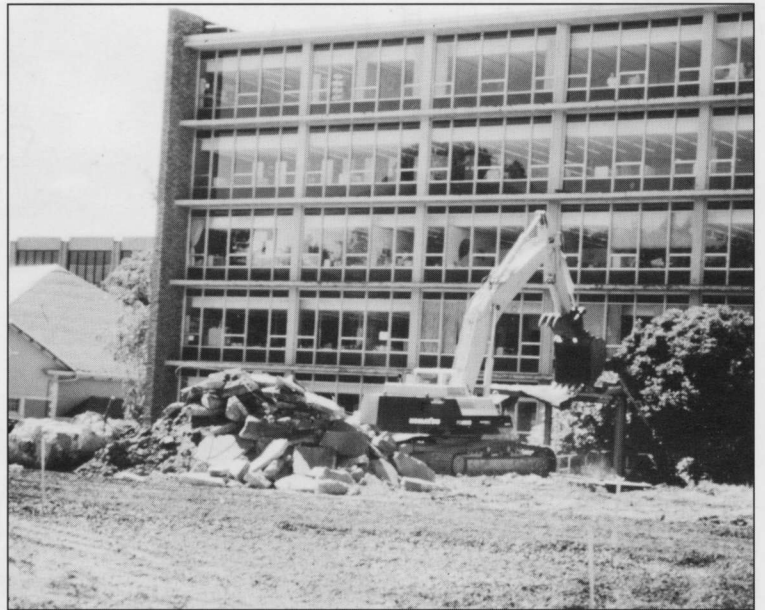


## BUILDING "ROOM TO GROW"

**T**he Komatsu PC400HD's great maw delivers yet another load of dirt to the waiting dump truck, an ongoing process these last few weeks at OSU's Valley Library. A gargantuan hole in the ground in front of the present library is the result of the first five weeks of work by Hoffman Construction. The week following ground breaking ceremonies for the new Valley Library saw construction workers installing fencing and loads of rock on the library quad as a staging area in preparation for construction.

The gigantic excavation makes room to grow—room for the new foundation for the addition to the Library. Huge dump trucks are now the norm as they rumble up and down college hill removing dirt from the site. The weather is dry and hot, and there's lots of dust—but it's the dust of progress, the dust of change, the dust of building "room to grow." We're building for the future in this dust—for our current students, our children and their children.

As I gaze out the window on this hot July afternoon, I marvel at the brute strength of the Komatsu PC400HD—certainly, the largest piece of heavy equipment I have ever seen. That is, it WAS the largest I'd ever seen, until a tower crane arrived on the scene. This behemoth was trucked onto the



site in pieces and set up the same afternoon. It will be used, in part, to pile drive sheets of corrugated steel into the ground to reinforce the foundation of the library.

Library patrons and staff enjoy a commanding view from north side windows of the work being done in preparation for the foundation of our new library addition. They marvel at the skill of the Komatsu's operator and the well-orchestrated daily drama of truck drivers, surveyors, engineers, and construction workers. It's very tempting to stay glued to the windows watching the daily progress.

Noise, lots of it, is the norm now as construction goes into full swing. Bricks come toppling down from the southwest corners of the building in preparation for construction of the new loading dock and

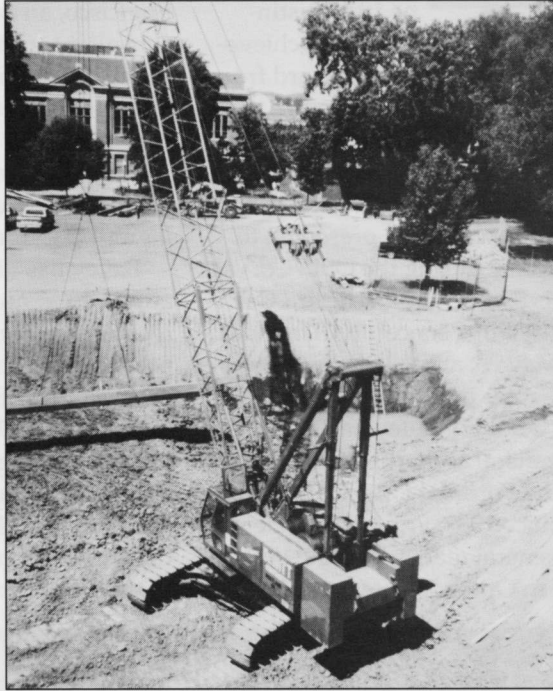
freight elevator. A jackhammer-like machine adds to the mayhem, involved in (I am told by those in the know) a "bushing" process—removing the paint from the cantilevers on each floor so that the new south wall can be attached to the cantilevers.

It's an exciting, noisy, dusty time here as we watch the building of the new Valley Library at Oregon State University—building "room to grow."

Marcia Griffin, Editor







THE WEATHER IS DRY AND HOT, AND THERE'S LOTS OF DUST—BUT IT'S THE DUST OF PROGRESS, THE DUST OF CHANGE, THE DUST OF BUILDING "ROOM TO GROW."



## OPERA DIRECTOR RECEIVES FRIENDS OF OSU LIBRARIES DISTINGUISHED ACHIEVEMENT AWARD

**T**he 1996 Distinguished Achievement Award from the Friends of OSU Libraries went to Robert Bailey, Director of the Portland Opera Association. The award was presented to Bailey during the OSU-Corvallis Symphony Orchestra Celebrity Pops concert on Thursday, May 23, at the LaSells Stewart Center in Corvallis.

Robert Bailey has been general and artistic director of the Portland Opera Association since 1982. Prior to that, he was general manager of the Western Opera Theater in San

Francisco, an arts management consultant, and a graduate instructor in Arts Administration at Golden Gate University. He also served as Director of Cultural Programming at National Public Radio in Washington, D.C. for five years.

Bailey has directed and appeared in numerous operas, recitals, and musical theater productions, and holds degrees in theater and English literature from the University of Illinois and degrees in music from the Eastman School of Music and the New England Conservatory of Music. As well as serving as an on-site evalua-

tor for the National Endowment for the Arts, and a judge for the annual Metropolitan Opera National Council Regional Auditions, Bailey founded and produces Portland Opera's biennial Eleanor Lieber "Stars of Tomorrow" auditions and initiated the Resident Artist Program of the Portland Opera. He has served as President of the Portland Arts Alliance and currently serves on the Executive Committee of Oregon Advocates for the Arts, among other pursuits.

Under Mr. Bailey's leadership, the Portland Opera has broadened its audience and financial base of support by increasing both the number of productions and performances, establishing an endowment fund, a cash reserve fund, and an aggressive production underwriting program.

At the May 23 Pops concert, Robert Bailey was presented with the annual Friends Award by David Hackleman, Board President, for his outstanding work as fiscal manager and artistic and general director of the Portland Opera. Bailey, an accomplished performer in his own right, delighted the standing-room-only audience by singing "Marian, the Librarian," from *The Music Man*, in response. His specially-choreographed baritone rendition was a highlight of the evening.

Bailey joins two other distinguished prior recipients of this award—Margarita Donnelly, co-founder and editor of *CALYX, a Journal of Art and Literature by Women*, and Nobel Laureate Francis Crick, winner of the Nobel Prize for his contribution to the discovery of the molecular structure of DNA.



Above: David Hackleman, Board President, presents award to Robert Bailey.

Below: Robert Bailey in action.





# PRIVATE DOLLARS, PUBLIC TREASURES— A THANK YOU TO FRIENDS OF OSU LIBRARIES

**A**s Americans have given to various charitable efforts over the years, they have created many national treasures available to all. Many of these resources would never have been possible with government support alone. Virtually all of the truly great libraries have been made great through gifts from individuals. We are most grateful to all of you who have generously supported the Oregon State University Libraries.

## THE HARRIS SOCIETY

\$10,000,000 +

Valley Foundation, Wayne and Gladys

\$2,000,000-\$9,999,999

Robert and Betty Lundeen

\$1,000,000-\$1,999,999

Associated Students of OSU  
Cameron, Elizabeth  
Campbell, Delpha and Donald  
(deceased)  
Kelley, Martin and Judy  
Kimball, William and Sara

## THE STRAND SOCIETY

\$250,000 - \$999,999

Autzen Foundation  
Forman, Tillman  
Kuse, James and Michael  
McKennon, Keith and Pat

*We extend a special recognition to our Friends who have reached milestones in their total lifetime giving to the Oregon State University Libraries.*

Smith, Andrew and Lavonne  
Stewart, Faye  
Stewart, Lucille (deceased)  
Strain, Douglas  
Trysting Tree Golf Club

## LINUS PAULING ASSOCIATE

\$100,000 - \$249,999

Austin, Ken and Joan  
Burlingham Trust  
Burlington Resources-Meridian  
Castles, James (deceased)  
Castles, Louise  
Clark Foundation  
DeLoach, Barton (deceased)  
Dow Chemical Company  
Drinkward, Cecil and Sally  
Fisher, Ruth  
Giustina, Nat & Jackie  
Knudson, Gene and Rosalie  
Hartung, Thomas and Beverly  
Merchant, Steve and Ina  
Ott, Walther and Maxine  
PacifiCorp Foundation  
Portland General Electric  
Roth, Lewis and Evelyn  
Tektronix Foundation  
Teter, Ken and Eunice  
Whiteley, Ben and Elaine  
Willamette Industries, Inc.

## TRYSTING TREE SOCIETY

\$50,000 - \$99,999

Autzen, Thomas  
Bolinger, Duis (deceased)  
Brod, Bill and Bonnie  
Broehl, Charlene  
Broehl, Donald (deceased)  
Chambers, Douglas and Vivian  
First Interstate Bank  
MacGregor, Cecil and Martha  
Morris, Lawretta  
Nielsen, Ralph and Viola  
Totten, Winifred  
Trout, Thomasina (deceased)  
Wilson, Norman

## WILLIAM JASPER KERR SOCIETY

\$25,000 - \$49,999

BTI Inc.  
Charley, Helen  
Coe, Howard and Gloria  
Dahlin, Dick and Phyllis  
Evans, Alice  
Fendall, Bill and Frances  
Harris, Carolyn  
Harris, John  
Herse, Bertha  
Mason, Robert and Sue  
McCool, Daniel and Betsy  
Merryfield, Anne  
Oregon Freeze Dry, Inc.  
OSU Student Foundation  
Rawlinson, Frank and Char  
Retzer, William and Mary  
Standard Insurance Company  
Summers, Anita

## KIDDER HALL SOCIETY

\$10,000 - \$24,999

Arscott, George and Elizabeth  
Bassett, Edward and Karen  
Boeing Company  
Bowen, La Rayne (deceased)  
Brunskill, Paul  
Byrne, John and Shirley  
Casey, Verne and Georgeann  
Day, Duane and June  
Dow Corning Corporation  
Freedom Forum  
George, Melvin and Shirley  
Goddard, Betty  
Hatch, Richard  
Hewlett-Packard Company  
Hill, Arik  
Hulsman, Gerald and Beth  
Kearney, Lee and Connie  
Kelts, Lora Ives (deceased)  
Moldenke, Alma  
Naff, Benton  
Nyberg, Clayton and Kay  
Olesen, Dolly  
Olesen, Kay (deceased)  
Oregon Community Foundation  
OSU Senior Class of 1995  
Pape' Group

Pendleton, Ray A (deceased)  
Rieckmann, William and Michal  
Satrum, Jerry and Dawn  
Scott, Suzanne and Walter  
SRG Partnership PC  
Tarbell, Polly and Harry  
Teledyne Charitable Trust  
Foundation  
U.S. National Bank  
Waite, Stephen and Joan  
Walker, John and Betty  
Wellman, Norbert and Ann  
Wheeler Foundation  
Wilson, James

## CAMPBELL LIBRARIAN'S CIRCLE

\$5,000 - \$9,999

Attebery, Walter and Pauline  
Brown, Robert  
Buell, Les and Betty  
Burkert, Ivan and Donna  
Carlson, Robert and Edith  
Castle, Emery and Merab  
Cheney, Horace and Dorothy  
Chipman, Ada  
Chown, Frank and Eleanor  
Corey, Lloyd and Virginia  
Dick, Jr, Harry and Betty Lou  
Fenner, John and Dorothy  
Floborg, William and Sally  
Georgia Gulf Corporation  
Gerstacker, Carl  
Giustina, Larry and Carolyn  
Goff, Richard and Susannah  
Goudy, Alan and Jane  
Hackleman, David and Debra  
Harper, James and Mariellen  
Harrison, Marshall  
Hitsman, Arthur and Ellen  
Hwang, Yun-Sheng and Chiu-Lie  
Ifft, Charlotte (deceased)  
Jones, Robert and Hilda  
Kirkendall, Lester  
Knodell, Bill and Donna  
Lemon, Berlan and Dorette  
MacVicar, Robert and Clarice  
Merck Company Foundation

*Continued on next page*

## LIFETIME GIFTS

Northwest Natural Gas  
Company  
Poirot, James and Raeda  
Rodriguez, Sumner and Adele  
Simmons, Forrest and Betty  
Jean  
Soloflex, Inc.  
Sponenburgh, Mark  
Trow, Clifford and Jo Anne  
Wildish, Norman and Evelyn

### BENEFACTOR

\$1,000 - \$4,999

Abbott Laboratories Fund  
Adams, Robert and Mary  
Allen, Charlotte  
Allstot, David and Vickie  
Amme, Norman  
Anselone, Philip  
Arnold, Roy and Jane  
Arthur, John and Beverly  
Baynes, Frank  
Benesh, Timothy and Rebecca  
Bernier, Paul and Isabelle  
Beuter, John and Jill  
Bielman, Kenneth and Julie  
Bland, Steven and Monica  
Blount, Bill and Nancy  
Bollen, Walter and Mary Ellen  
Bremer, Kathy  
Buchner, Ronald and Ann  
Burt, Louise  
Butcher, Karyle  
Caldwell, Doris  
Callahan, Darry and Betty  
Calvin, Lyle and Shirley  
Cappelli, Raymond  
Carlstrom, Alzora  
CH2M-Hill  
Chamberlain, Gordon  
Chambers, Kenton and  
Henrietta  
Charnock, Betty  
Chay, Cathy  
Chevron Corporation  
Ching, Kim and Te May  
Cleasby, Gilbert and Marie  
Coakley, James and Stella  
Compton, Mary (deceased)  
Compton, Oliver  
Corvallis Construction Inc.  
Cowan, Ruth  
Culley, Bob and Mariann  
Cutress, Bertha  
Dalton, Cliff and Donna  
Dayton, Irving and Jean  
Decius, John and Anne  
(deceased)  
Delta Air Lines Foundation  
Dibble, Terence  
Dircon Farms, Inc.  
Donovan, Robert  
Drexler, Jr, John  
Duncombe, Rich and Alesia  
Dutson, Thayne  
Educom

Edwards Jr., Allen and Carolyn  
Eli Lilly and Company  
Foundation  
Elle, Ralph  
Elston, Chester and Marian  
Emery II, William  
Emory, Pamela  
Evans, Harold and Elizabeth  
Exxon Education Foundation  
Eyman, Steven and Dorothy  
Faucett, Judy  
Finch, David and Mary Flahive  
Fisher, Barry and Carol  
Flanigan, Michael and Carole  
Foley, Dwayne and Jan  
Forrester, J W and Eleanor  
Fox, Anne  
Fraser, Paul and Aleta  
Gilkey, Gordon  
Gilkey, Vivian (deceased)  
Gilkey, Richard and Alyda  
Gordon, Louis and Jacqueline  
Graham, C H and Jean  
Graham, Dan and Marilyn  
Grammel, David  
Greber, Henry  
Gregory, Marie (deceased)  
Hansen, James and Kathy  
Hardesty, David and Penny  
Harem, Fred and Doris  
Harrison, Ken and Ginger  
Hawthorne, Betty (deceased)  
Heald, James and Mary  
Henderson, Nealan  
Herlocker, Dennis  
Highsmith, Jr, Richard  
Hixson, Bryce and Kathleen  
Hood, Brenda  
Hovland, Warren and Sue  
Howard, Kenneth and Beth  
Howland, James and Ruth  
Howlett, John and Roxie  
Hughes, Joy and Ken Lee  
Intel Foundation  
Jones, Carmen  
Jones, Jeffry  
Jones, Max and Piper  
Jorgensen, Lee and Stephanie  
Kaufman, William  
Kearney, Lee and Connie  
Keil, Robert  
Kellogg, Lloyd and Mildred  
Keltner, John and Maria  
Kinch, Michael  
King, James and Linda  
King, Roger and Helen  
Klein, Glenn  
Krane, Ken and Paula  
Krueger, Hugo and Ruth  
Kuhl, Jack and Ruth  
Kuhns, Russ and Marilyn  
Laotepitaks, Chansak and  
Boonsri  
Lattin, John and JoAnne  
Ledbetter, Marie  
Lee, Richard and Vickie  
Leman, Craig and Nancy

Leslie, Kent  
Lindquist, Roger and Whitney  
Lindsay, Lyle  
Lock, William  
Lorenzen, Michael and Patty  
Mann, Chris and Donna  
Mann, Howard  
Manning, Walter and Julie  
Manning-Jones  
Martin, Jeffrey and Lynn  
Martin, Scott and Karen  
Marsh, Albert and Elizabeth  
Marwin, Richard  
Mast, Hollis and Ann  
Matsumoto, Masakazu  
McCallister, Alan and June  
McElroy, Gerald and Jean  
McGinnis, James and Anna  
McGowan, John  
McKesson, John  
Mead, Clifford  
Meehan, Thomas and Margaret  
Meyer Memorial Trust  
Miller, Donald  
Miller, Ronald and Betty  
Milleson, Thomas  
Moore, Donald and Jane  
Moore, Rod and Jean  
Moore, Sylvia  
Morse, William and Jean  
Naef, Randall and Mary Jo  
Narver, Mildred  
Neugart, Zelma  
Newbern, David and Caroline  
Nicodemus, David  
Niederfrank, Helen  
Nooteboom, Gary and Sabine  
Northcutt, Allison  
Osborne, Owen and Judith  
Peck, Norton and Barbara  
Peckham, William and Gene  
Perry, Joanne  
Peters, Donald and Anita  
Phi Kappa Phi  
Poorman, Ken and Sue  
Popovich, Milosh and Jeanne  
Portland Celebrity Forum, Inc.  
Powell, Gary and Joyce  
Powell, Nancy  
Reckmann, Douglas  
Reichart, Robert  
Renaissance Trust  
Reynolds Jr, Earl  
Richen, Clarence  
Rigler, Ross and Janet  
Ripley, James  
Roake, Betty  
Rogers, David and Edythe  
Rohrmann, George  
Rose, Paul and Jean  
Rudd, Jim and Cathryn  
Sass, Gerald  
Saxton, Frances  
Saylor, Frances  
Sayre, Henry  
Schary, Philip  
Schroeder, Darrell

Schuette, Henry and Janice  
Schumacher, Carl and Louise  
Scott, Allen  
Scott, Delbert and Alice  
Scott, Shirley  
Scroggins, Tom and Mary  
Seville, Mary Alice  
Shaffer, Richard and Kathleen  
Shaw, Clayton and Harriet  
Shaw, Francis  
Shoemaker, Clara  
Shoemaker, David (deceased)  
Short, William and Katherine  
Simmons, Bland and Beverly  
Slater, Daniel and Sue  
Sly, Virginia  
Smith, Helen  
Sollitt, Charles and Melissa  
Spady, Richard and Ina  
Spinney, Robert and Carol  
State Farm Companies  
Foundation  
Stoll, Robert and Nancy  
Stoltenberg, Carl and Rosemary  
Sturmer, Dale  
Tenneco Management Company  
Thomas, David and Clarissa  
Thompson, Clarence  
Tilles, E Doris  
Todd, James  
Tostevin, Breck  
Trommershausen, A. J. and  
Minnie  
Tschang, Pin-Seng and Shirley  
Tupling, C Gordon  
Tuthill, Lewis (deceased)  
Tuthill, Olga  
Tyus, Ober  
Union Pacific Corporation  
US West Communications  
Foundation  
Valyasevi, Ruud  
VanDevender, Neal  
Van Vliet, Tony and Louise  
Van Zandt, Edward and Sheila  
Varbel, Kathy  
Vars, Jr., Charles and Freda  
Vosika, Ronald and Linda  
Walker, Burdett  
Wake, Don and Susanne  
Wang, Mr and Mrs Chih  
Weatherspoon, Margaret  
Weber, Bruce  
Weber, Leonard and Barbara  
Wilson, Daniel and Lois  
Wissman, Roger  
Withers, Lawrence and Velvet  
Wochner, Karl  
Wogaman, Thomas and Mariol  
Woodburn, Margy  
Woosley, Charles and Gail  
Yonker, Nicholas and Thea  
Youde, James and Judith  
Young, J Lowell and Ruth Ann  
Young, Roy and Marilyn  
Youngstrom, Elizabeth  
Ziady, Jonathan and Merrie



*Annual gifts to the Oregon State University Libraries form the foundation of our development program. We are very grateful for the generosity of our Friends during the past year (July 1, 1995, through June 30, 1996).*

*This listing does not include planned gifts and pledges.*

## THE HARRIS SOCIETY

\$1,000,000 +

Kelley, Martin and Judy  
Valley Foundation, Wayne and Gladys

## THE STRAND SOCIETY

\$250,000 to \$999,999

Lundeen, Robert and Betty

## LINUS PAULING ASSOCIATE

\$100,000 to \$249,999

Hartung, Thomas and Beverly  
Kimball, William and Sara  
Kuse, James and Michael  
Ott, Walther and Maxine  
Portland General Electric  
Smith, Andrew and LaVonne  
Strain, Douglas  
Tektronix Foundation  
Trysting Tree Golf Club

## TRYSTING TREE SOCIETY

\$50,000 to \$99,999

Chambers, Douglas and Vivian  
Dow Chemical Company  
Foundation  
Trout, Thomasina, (deceased)

## WILLIAM JASPER KERR SOCIETY

\$25,000 to \$49,999

Autzen Foundation  
Autzen, Thomas  
Bassett, Edward and Karen  
Clark Foundation  
Clark, Maurie and Mary  
MacGregor, Cecil and Martha  
McKennon, Keith and Pat  
PacifiCorp Foundation  
Willamette Industries Inc.

## KIDDER HALL SOCIETY

\$10,000 - \$24,999

Broehl, Charleen  
Brunskill, Paul  
Burlingham Trust, Inc.

Drinkward, Cecil and Sally  
Freedom Forum, The  
Harris, Carolyn  
Hitsman, Arthur and Ellen  
Kearney, Leonard and Connie  
Kelts, Lora Ives (deceased)  
Moldenke, Alma  
Morris, Lawretta  
Naff, M Benton  
Nielsen, Ralph and Viola  
SRG Partnership, PC  
Standard Insurance Company  
Summers, Anita  
Scott, Suzanne and Walter  
Teledyne Charitable Trust  
Foundation  
Walker Charitable Trust  
Walker, Betty

## CAMPBELL LIBRARIAN'S CIRCLE

\$5,000 to \$9,999

BTI, Inc.  
Castle, Emery and Merab  
Charley, Helen  
Cheney, Horace and Dorothy  
Corey, Lloyd and Virginia  
Dahlin, Richard and Phyllis  
Dick, Jr, Harry and Betty Lou  
Evans, Alice  
First Interstate Bank OR  
Foundation  
Fisher, Ruth  
Georgia Gulf Corporation  
Hackleman, David and Debra  
Harrison, Marshall  
Hewlett-Packard Company  
Hulsman, Gerald and Beth  
Hwang, Yun-Sheng and Chiu-Lie  
Jones, Robert and Hilda  
Knodell, Clayton and Donna  
Mason, Robert and Sue  
McCool, Daniel and Elizabeth  
Rodriguez, Sumner and Adele  
Satrum, Gerald and Dawn  
Trow, Clifford and Jo Anne  
Wellman, Norbert and Ann  
Wildish, Norman and Evelyn  
Wilson, James  
Wilson, Norman

## BENEFACTOR

\$1,000 to \$4,999

Abbott Laboratories Fund  
Allstot, David and Vickie  
Amme, Norman  
Arscott, George and Elizabeth  
Bernier, Paul and Isabelle  
Beuter, John and Jill  
Blanc, James  
Blount, William and Nancy  
Boeing Company  
Brown, Robert  
Buell, Les and Betty  
Burkert, Ivan and Donna  
Burlington Resources Fdn  
Burt, Louise  
Byrne, John and Shirley  
Callahan, Darald and Betty  
Calvin, Lyle and Shirley  
Carlson, Robert and Edith  
Casey, Verne and Georgeann  
Charnock, Betty  
Ching, Kim and Te May  
Chown, Frank and Eleanor  
Cleasby, Gilbert and Marie  
Coakley, James and Stella  
Cutress, Bertha  
Dayton, Irving and Jean  
Dow Chemical Company  
Elliker, Paul  
Evans, Harold and Elizabeth  
Eyman, Steven and Dorothy  
Faucett, Judy  
Flanigan, Michael and Carole  
Floberg, William and Sally  
Foley, Dwayne and Janice  
Fraser, Paul and Aleta  
George, Melvin and Shirley  
Giustina, Larry and Carolyn  
Goddard, Betty  
Goff, Richard and Susannah  
Graham, Dan and Marilyn  
Harem, Fred and Doris  
Harper, James and Mariellen  
Heald, James and Mary  
Hood, Brenda  
Hovland, Warren and Suzanne  
Howard, Kenneth and Beth  
Howlett, John and Roxie  
Hughes, Joy  
Jones, Carmen  
Jones, Jeffrey Alan

Jones, Max  
Jones, Sharon  
Jorgensen, Lee and Stephanie  
Keil, Robert  
Keltner, John and Maria  
King, James and Linda  
King, Roger and Helen  
Klein, Glenn  
Kuhl, Jack and Ruth  
Laotepitaks, Chansak and Boonsri  
Lattin, John and JoAnne  
Lemon, Berlan and Dorette  
Lindsay, Lyle  
Lock, William  
MacVicar, Robert and Clarice  
Mann, Howard  
Manning, Walter and Julie  
Martin, Scott and Karen  
Marwin, Richard  
Mast, Hollis and Ann  
McGinnis, James and Anna  
McGowan, John  
Meehan, Thomas and Margaret  
Merchant, Stephen and Ina  
Merck Company Foundation  
Merryfield, Anne  
Milleson, Thomas  
Mills, Milford and Eileen  
Morse, William and Jean  
Narver, Mildred  
Neugart, Connie  
Nicodemus, David  
Northcutt, Allison  
Nyberg, Clayton and Kathryn  
Oregon Coast Aquarium Inc  
Oregon Community Foundation  
Osborne, Owen and Judith  
Pape' Group Inc  
Peck, Norton and Barbara  
Popovich, Milosh and Jeanne  
Portland Celebrity Forum, Inc  
Reichart, Robert  
Retzer, William and Mary  
Rigler, Ross and Janet  
Ripley, James  
Rogers, David and Edythe  
Rudd, James and Cathryn  
Sass, Gerald  
Saxton, Frances  
Saylor, Frances  
Schuette, Henry and Janice  
Scott, Allen

# ANNUAL GIFTS

## WITH A LITTLE HELP FROM OUR FRIENDS

**S**pecial friends Robert W. "Bob" and Betty Lundeen provided a generous gift to the Library Campaign, which will name the beautiful Rotunda in the new building. Bob has been the lead volunteer on the Library project since the late 1980's, first as sole chair of the project and later as co-chair along with his wife Betty, Bill and Sara Kimball and Keith and Pat McKennon. Bob, former chair of Dow Chemical Company, and later Chairman and CEO of Tektronix, Inc., serves on several volunteer boards, including the Monterey Bay Aquarium in California and the Orcas Island Library Board in Washington. In addition, his involvement with United Way, city planning commissions and Boy Scouts of America among others, illustrates his positive contributions to the community.



Bob Lundeen

Scott, Delbert and Jane  
 Scott, Myrtle  
 Scroggins, Tom and Mary  
 Shaffer, Richard and Kathleen  
 Shaw, Francis  
 Shoemaker, Clara  
 Short, William and Katherine  
 Slater, Daniel and Lorena  
 Sponenburgh, Mark  
 Stoltenberg, Carl and Rosemary  
 Sturmer, Dale  
 Tarbell, Harry and Polly  
 Teter, Kenneth and Eunice  
 Thomas, David and Clarissa  
 Tostevin, J Breck  
 Trommershausen, Alfred and Minnie  
 Tschang, Pin Seng and Shirley  
 Tupling, C Gordon  
 Union Pacific Corporation  
 Vosika, Ronald and Linda  
 Waite, Stephen and Joan  
 Walker, Burdett  
 Wang, Mr and Mrs Chih  
 Weatherspoon, Margaret  
 Weber, Barbara  
 Webster, Stephen and Janet  
 Wilson, Daniel and Lois  
 Woodburn, Margy  
 Woosley, Charles and Gail  
 Yonker, Nicholas and Thea  
 Youngstrom, Elizabeth

## PATRON

\$500 to \$999

Apple Matching Gifts Program  
 Arthur, John and Beverly  
 Avery, Bonnie  
 Bailey, Alan and Saralena  
 Bauer, Henry L & Associates PC  
 Becker, Manning and Phyllis  
 Berger, Paul and Geraldine  
 Bielman, Kenneth and Julie  
 Bishop, Norman and Patricia  
 Bland, Steven and Monica  
 Bollen, Walter and Mary Ellen  
 Bruce, Robert and Judith  
 Buck, Steve and Nancy  
 Cha, Payson and Maulien  
 Chamberlain, Gordon  
 Chambers, Kenton and Henrietta  
 Chevron Corporation  
 Conkey, Harlan and Judith  
 Coopers & Lybrand  
 Craven, Gene and Norma  
 Deloitte & Touche  
 Douglas, Bruce and Sharon  
 Eli Lilly and Company Fdn.  
 Eltzroth, Merlin and Elsie  
 Finch, David and Mary  
 Fleming, Charlotte  
 Fleming, III, Denver  
 Fox, Mary Anne  
 Gilkey, Richard and Alyda  
 Gilkey, Gordon  
 Glaxo Inc

Gravatt, Arthur and Margaret  
 Gulick, James and Marsha  
 Hagn, George and Rose  
 Hall, James and Bonnie  
 Hansen, James and Kathleen  
 Hardy, Thomas and Constance  
 Hashimoto, Andrew and Merle  
 Hill, Arik  
 IBM Corporation  
 Intel Foundation  
 Kellogg, Lloyd and Mildred  
 Kerl, Caroline and William Lunch  
 Kittel, Joe  
 Koenig, Dennis  
 Krpalek, Gregory and Mary  
 Lang, John and Althea  
 Larson, Milton and Wilma  
 Ledbetter, Marie  
 Leman, Craig and Nancy  
 Lindseth, Chris and Elizabeth  
 Lindsey, Patricia  
 Lunch, William and Caroline Kerl  
 Lyford, Jr, John  
 Madsen, Victor and Carolyn  
 Marsh, Albert and Elizabeth  
 McElroy, Gerald and Jeanne  
 Medearis, Ken and Kathleen  
 Morrow, Alice Mills  
 Neeley Nelson Lumber Co, Inc  
 Nye, Robert and Mary Jo  
 OSU Folk Club  
 Palmer, Richard and Carol  
 Plambeck, Mr and Mrs Hans  
 Polensek, Helen  
 Poling, Dan and Helen  
 Powell, Gary and Joyce  
 R3 Custom Engraving  
 Radell, Vittz-James and Elaine  
 Raupach, Richard  
 Raw, George and Linda  
 Reckmann, Douglas  
 Rohrmann, George  
 Rose, Paul and Jean  
 Rostvold, Mark and Evelyn  
 Russell, Elizabeth  
 Ryan Hotchkiss, Mary  
 Schary, Philip and Nancy  
 Shell Oil Company Fdn Inc  
 Simmons, Bland and Beverly  
 Simone, Mark Vincent  
 Sterk, Frederick and Maria  
 Synthetech, Inc  
 Tenneco Management Company  
 Tilles, Doris  
 US West Communications Fdn.  
 Van Olst, James and Doris  
 Van Zandt, Edward and Sheila  
 Varseveld, George and Audrey  
 Warren, William and Nancy  
 Weswig, Paul and Dorothy  
 Wheeler Foundation  
 Wilkins, Bill and Caroline  
 Willamette Industries, Inc.  
 Wogaman, Thomas and Mariol  
 Youngberg, Harold and Bonnie

## SPONSOR

\$250 to \$499

AT&T Foundation  
 Anglemier, Allen and Verna  
 Arnold, Roy and Jane  
 Baer, Marguerite Cook  
 Barker, Jerry and Marianne  
 Barofsky, Douglas and Elisabeth  
 Begis, Glenn Douglas  
 Bergam, Donald  
 Betebenner, George and Sharleen  
 Black, Gordon and Geraldine  
 Bloomfield, Stefan and Molly  
 Boeseke, Elsie  
 Bond, Carl and Lenora  
 Boone, Stephen and Michele  
 Borquist, Charles  
 Bremer, Kathy  
 Brown, Clinton and Cheryl  
 Brown, David and Nancy  
 Burck, Wayne and Mary  
 Jacqueline  
 Busch, James  
 Campbell, Alice  
 Campbell, William  
 Carlstrom, Ted and Alzora  
 Chang, Terrill  
 Christensen, Leno and IdaMae  
 ComEd  
 Comer, Thomas and Rosalie  
 Copley, Steven  
 Cowan, Ruth  
 Crowell, Hamblin  
 Crudele, John and Elizabeth  
 Culley, Robert and Mariann  
 Daellenbach, Keith Kermit  
 Davis, Richard and Kathleen  
 DeGroot, Peter  
 Deinzer, Max  
 Drake, Charles and Ellen  
 Dayton IV, George  
 Drexler, Jr, John  
 Emert, Mr & Mrs Michael  
 Evey, John and Beate  
 Exxon Education Foundation  
 Financial Source Services, Inc  
 Flynn, Cynthia and Jolene  
 Ramaker  
 Fouts, Roger and Meredith  
 Fox, Fred  
 Francis, Sally  
 Fulmer, Winnifred  
 Gamer, Robert and Louise  
 General Telephone & Electric  
 Giers, Paul and Caroline  
 Gordon, Louis and Jacqueline  
 Gore, Danny  
 Green, James and Pat  
 Guffey, John and Paula  
 Hardesty, David and Penny  
 Heitzhausen, Malcolm and Norma  
 Hildebrandt, Emery and Helen  
 Hirte, James and Laura  
 Holmes, Zoe Ann  
 Howland, Peter  
 Hussey, Charles  
 Ito, Bruce



Jack, Elizabeth  
 Jackmond, Oliver and Kathie  
 Johnson, Donald and Kathleen  
 Jones, Kenneth and Karen  
 Katzev, Richard and Aphra  
 Kelley, Lonny and Pamela  
 Kerkvliet, Joe  
 Kilian, John  
 Kirk, Dale and Esther  
 Klammer, Peter and Jennifer  
 Krane, Kenneth and Paula  
 Langridge, Robert and Ruth  
 List, Peter and Judith  
 Lochhead, James  
 Lubchenko, Jane  
 Lyons, William and Dolores  
 Mann, Lawrence and Donna  
 Mara, Stephen and Janet  
 Mathews, Christopher and Catherine  
 Matlock, Diane  
 McClure, John  
 McLuckie, Matthew  
 Mead, Clifford  
 Melby, Mary Anne  
 Microsoft Corporation  
 Miller, Dorothy  
 Miller, John and Linda  
 Millhollen, Jr, Lloyd and Bertha  
 Naef, Randall and Mary Jo  
 Nave, III, Claude  
 Newbern, David and Caroline  
 Norris, Eric and Jane  
 Odlum, Laurie  
 Oliver, Audrey  
 Paasche, Olaf and Catherine  
 Paige, Barbara  
 Paul, Vernon  
 Pierce Inc  
 Pilger, Paul  
 Poole, Robert and Susan  
 Poree, O'Neil and Katherine  
 Potter, John and Sandra  
 Ramaker, Jolene and Cynthia Flynn  
 Roberts, Joseph and Monique  
 Robertson, Alan and Virginia  
 Ross, Charles and Elsie  
 Scanlon, John and Barbara  
 Scharschmidt, Howard and Chung He  
 Schubert, John and Miriam  
 Shaull, Kenneth and Susan  
 Shaw, Douglas  
 Shinn, John and Charlotte  
 Sprint Foundation  
 State Farm Companies Fdn.  
 Szmania, Michael and Kathryn  
 TRW Foundation  
 Tektronix Foundation  
 Thies, Richard and Diane  
 Thomas, Thomas and Barbara  
 Todd, James and Linda  
 Towey, Richard and Lorraine  
 Tyus, Ober  
 Vars, Jr, Charles and Freda  
 Wallace, Stanton and Alice

Wang, Yung Lung and Jia-Lih  
 Weber, Bruce  
 Wedman, Edward and Rachel  
 Whalen, Doris  
 Wilcox, Anthony and Marianne  
 Wollenberg, Kenneth and Barbara  
 Youmans, Russell and Mary  
 Young, Roy and Marilyn  
 Ziady, Jonathan and Merrie

## SUPPORTING FRIEND

\$100 to \$249

Abbott, V, Gheen  
 Abramowitz, Robert  
 Adams, Evan and Debbie  
 Adams, Gerald and Sara  
 Adamson, Tim and Lisa  
 Agnew, Allen and Francis  
 Ahearn, Kerry  
 Airmar Consultants Inc  
 Almond, Thomas and Catherine  
 Aman, Robert  
 Amano, Matt and Marcie  
 Amoco Foundation, Inc.  
 An, Haejung  
 Anderson, Bradley and Jennifer  
 Anderson, Cynthia  
 Anderson, John and Marsha  
 Aplet, Leonard  
 Appleby, Arnold and Geraldine  
 Araghi, Mehdi and Laurel  
 Armentrout, Barry and Linda  
 Arnold, Bradford and Mary Ellen  
 Arnold, David and Joanne  
 Arnsberg, Asa and Adrienne  
 Art Brokerage Inc  
 Aumann, Kurt and Vada  
 Austin, Richard and Patricia  
 Avery, Keith and Carole  
 Avison, Gregor and Karen  
 Ayres, James  
 BP America Inc.  
 Baggett, James  
 Bailey Weaver, Lucinda  
 Bailey, Susan  
 Baker, Dennis and Pamela  
 Ball, John and Sarah  
 Bankofier, Duane and Sharon  
 Barber, Roger  
 Barkley, T M  
 Barkovich, Karen  
 Barnard, James and Ramona  
 Barnekoff, David and Janet  
 Barth, John  
 Bartholomew, Kirby  
 Barton, Craig and Karen  
 Battaile, Nancy  
 Bauman, James  
 Bauman, Michael  
 Bayley, Peter and Maria  
 Beardsley, Robert and Katherine  
 Beck, Kathy Ann  
 Becker, Boris  
 Becker, David and Janice  
 Becker, Robert and Mary  
 Beckley, Charles  
 Beier, David and Clara

Benesh, Timothy and Rebecca  
 Berg, Steve  
 Berry, Donald and Audrey  
 Berry, Ralph and Elaine  
 Besse, Jr, Ralph and Virginia  
 Bialkowski, Paul and Lori  
 Bibler, Jr, Darrel and Jean  
 Black, Reagan and Ellen  
 Black, Terry  
 Bluhm, James and Carol  
 Boden, Ralph  
 Bohr, David and Teresa  
 Bonnlander, Heinke  
 Boquist Zielinski, Vicki  
 Borchers, Lee and Lorraine  
 Borchgrevink, Gordon and Marion  
 Borstel, Mr & Mrs Frank  
 Boubel, Thomas  
 Bower, Cynthia  
 Bowerman, Herbert and Myrtis  
 Bowerman, Janice  
 Bowman, Eugene  
 Bowman, Roger and Lori  
 Bowman, Mirtha  
 Bowne, John and Kathryn  
 Boyer, Charles and Mary  
 Brandt, William and Nancy  
 Brantlund, John  
 Bransford, Donald  
 Brass, Jane  
 BremCo Construction Inc

Breunsbach, Rex  
 Brewer & Associates, Inc  
 Brewer, James  
 Brock, Dorothy  
 Brodie, William  
 Brooks, Kristina  
 Brown, Donald and Joy  
 Brown, Molly  
 Browne, William and Beverly  
 Brownell, Philip  
 Buckleair, David and Glenda  
 Budke, Mary  
 Buisman, Ben and Jaqueline  
 Burch, Eugene and Myrna  
 Burgett, Mr & Mrs Paul  
 Burles, John and Angelika  
 Burnett, Robert and Carol  
 Burnham, Janet  
 Burri, Fred and Marjorie  
 Butcher, Karyle  
 Butler, Gilbert  
 Butzner, Paulette  
 Campbell, Julie  
 Canatsey, John and Barbara  
 Candolfi Vasconcelos, Carmo  
 Canfield, Philip and Lingzhou  
 Carey, Andrew and Elizabeth  
 Carlson, Helen  
 Carroll, Carleton and Paulette  
 Carter, John and Lucille  
 Cartmel, Bruce and Pamela  
 Cates, David

## WITH A LITTLE HELP FROM OUR FRIENDS

**S**ara and Bill Kimball of Belvedere, California made a generous gift to the Library Campaign. The couple served on the volunteer leadership committee as co-chairs and have also provided support for the Sara Hart Kimball College of Business Dean's Chair. Sara, a 1958 graduate of OSU, is a member of the Council of Regents and serves on the OSU Foundation Board of Trustees, as well as being involved with the Colonial Williamsburg Foundation and having served as director of the San Francisco Education Fund, the St. Stephens Guild and the Marin Ballet Association, among others. Bill Kimball, with degrees from Stanford and Harvard, is president of Kimball and Company in San Francisco and has served with many community organizations such as the San Francisco Symphony, The Trauma Foundation of the San Francisco General Hospital, and the Smith Kettlewell Eye Research Institute. Currently, he is President of the Board of Trustees of the California Academy of Sciences.



Sara & Bill Kimball

## ANNUAL GIFTS

### WITH A LITTLE HELP FROM OUR FRIENDS

**M**artin N. Kelley and his wife Judy, have made a significant gift to the Library Campaign. Their pledge to match cash gifts to the Campaign helped make the difference in matching the Oregon legislature's second \$10 million bonding challenge. Martin, immediate past chairman of the Board of the OSU Foundation, retired as President of Kiewit Engineering Company in 1990, after enjoying a career of 38 years with the company. He is a member of the Council of Regents and also serves on the College of Engineering Advisory Council. Kelley earned a degree in civil engineering from OSU in 1950 and one son, Steve, followed in his father's footsteps, also graduating from OSU.



Martin & Judy Kelley

Cattrall, Thomas  
Cazel, Mary  
Cecilian, Mike and Deborah  
Cerotsky, Kenneth and Barbara  
Chalfan, John and Mary  
Chandler, Marilyn  
Chang, Shyi Feu and Wang-Ming  
Cheng, Sih Yao  
Chickering, Jay and Thea  
Christie, David and Anne  
Christie, John and Margaret  
Chun Hoon, Myrna Pang  
Clarkson, Douglas and Susanna  
Click, Thomas  
Clifton, Daphne  
Coe, Everett and Catharine  
Collias, George  
Comeau, Art  
Compaq Computer Foundation  
Conner, Michael  
Cook, Curtis  
Cook, Robert and Gail  
Cooksley, Kathryn  
Corden, Malcolm and Josephine  
Couch, David  
Courtney, Wayne and Shirley  
Crabtree, Garvin and Priscilla  
Crawford, Barbara  
Crino, Arthur  
Crooks, Mr & Mrs William  
Croze, Gary and Cynthia  
Croy, Charles  
Crozier, Jr, William and Marilyn  
Cunningham, Thomas and Jean  
Curry, Timothy  
Curtis, Daniel

Cutler, Melvin and Sylvia  
Dalton, Clifford and Donna  
Davidson, Jr, Clayton and Elizabeth  
Davies, Craig and Kay  
Davis, Donald  
Davis, James  
Davis, Priscilla  
Day, Jr, James and Jeanne  
De Mattei, Robert and Marian  
Deardorff, James  
Delander, Gary  
Delta Air Lines Foundation  
Derbyshire, Thomas and Carolyn  
Detrick, George and Lynne  
Detwiler, Kevin and Debra  
Dickman, Henry and Marjorie  
Dixon, John  
Doherty, Robert  
Donel, John  
Dooney, James and Mary  
Doudoroff, Peter and Eve Mary  
Dow Corning Corporation  
Drew, Sean and Sheri  
Drummond, Michael  
Dudley, Marjorie  
Dumdi, Cleve and Eleanor  
Duncombe, Richard and Alesia  
Dunlap, Donald and Catherine  
Dunn, James and Joyce  
Eagon, Kenyon and Heather  
Ebell, Walter and Dianna  
Edwards, David and Laurada  
Egleston, Roger  
Elbow, Gary and Margaret

Elkins, James and Karen  
Ellison, Dennis and Judith  
Elmgren, Roy and Vera  
Engeldinger, Grace  
Envall, Kenneth and Sharon  
Erickson, Werner and Joan  
Erwin, Jr, Marion and Sherri  
Espino, Allan  
Evey, John M  
FMC Foundation  
Fall, Harry and Barbara  
Fang, Sheng and Cynthia  
Farleigh, Scott and Judy  
Faulkenberry, David and Frances  
Feight, Craig  
Fernald, Richard  
Ferrin, Henry and Florence  
Fischbach, Alan and Cheri  
Fisher, Betty  
Fisher, Donald and Mary  
Fisher, Robert and Mary  
Fleming, David H.  
Fletcher, Donald and Joan  
Forrer, Johannes and Annette  
Fortner, James and Kay  
Foster, Betty  
Foster, James and Leslie  
Foulke Family Trust  
Fratzke, James and Barbara  
Freeman, Richard F.  
Fretwell, Corinne and Lewis  
Freuen, Patrick and Kim  
Frick, Ralph  
Frost, Barry  
Frost, Steven  
Gabriel, C John  
Gabrielsen, Bernard  
Galbraith, John and Laura  
Galloway, Janet  
Gamwell, Jr, James  
Gardner, Jr, Wallace and Billie  
Garrow, Daniel  
Gaver, Dona  
Gearhart, Richard  
Geier, Max and Gilda  
Geiger, John and Patricia  
GenCorp Foundation, Inc.  
George, Mark  
Gerl, Randolph  
Gerwick, William  
Gillem, Christopher  
Girt, Carol  
Gladstone, Caroom  
Goetze, Norman and Barbara  
Goforth, Peggy  
Goldsmith, Kurt  
Goodale, Helen  
Goodman, Gary and Sally  
Gottlieb, Leslie and Vera  
Grammel, David  
Gray, Kathy and Timothy  
Greene, Bud  
Greene, John and Carolyn  
Greenley, Dale  
Greenwood, Michael  
Greenwood, William and Grace  
Greer, John and Barbara  
Gregory, Stanley and Vicki

Grotzinger, Raymond and Leah  
Gunther, Stephen and Minet  
Haldorson, Gary  
Haley, Dorothy  
Hall, Charlotte  
Hall, Jr, Robert and Emily  
Halsey, Mark and Janis  
Hamdy, Zikif  
Hanel, Michael  
Hanf, Daniel  
Hansen, Edward  
Hansen, Leon and Marjorie  
Harnden, Edwin and Emily  
Harris, Irwin and Kathryn  
Harris, Robert and Linda  
Harter Family Trust  
Harter, Jr, Lafayette and Charlotte  
Hastings, Gregory  
Havazelet, Ehud  
Hawkins, John and Ann  
Head, Stephen  
Heeter, David and Kristin  
Heffley, John and Charlotte  
Hefler, John  
Heidgerken, Todd and Heidi  
Helgeson, Leslie  
Hemphill, Brian and Kathryn  
Henry, Elmer and Edna  
Hercules, Inc.  
Hess, Richard  
Hirai, Richard and Elsie  
Hite, Randolph and Luraina  
Hoechst Celanese  
Hoecker, Nancy Jo  
Hoffman, James and Margaret  
Hoffman, Linda  
Holl Logging Co  
Holl, Dennis and Katherine  
Holland, Hezekiah and Sharon  
Holthouse, Mary  
Homann, Peter  
Hopps, Donald and Ruth Ann  
Horner, Gretchen  
Horrell, Deborah  
Horsell, Arthur  
Howland, James and Ruth  
Huddleston, J Herbert  
Hudson, James and Nancy  
Huff, Milton and Betty  
Hull, Keith and Brenda  
Humphreys, Lindy  
Hurst, William and Charleen  
Huyer, Adriana  
Ingham, Russell  
Inglis, Loyd and Sandy  
Isaacson, Dennis  
J Bar V Farms  
Jaqua, Evan and Sue  
Jarvis, Joe and Kathy  
Jemison, George M.  
Jenzejewski, John and Judy  
Jessup, Janice  
Johnson Controls  
Johnson, Arthur and Jane  
Johnson, Floyd and Donna  
Johnson, Karl Douglas  
Johnson, Leland and Mary Lou  
Johnson, Robert and Virginia



Johnson, Robert M  
 Johnston, David and Joann  
 Johnston, Lee and Joyce  
 Jones, Elaine  
 Jones, Stewart and Judith  
 Judd, Richard and Lee Ann  
 Kachmarek, Mark and Ann  
 Kalk, Peter  
 Kammeyer, Raeline  
 Kanenaga, Eddie and Etsuko  
 Kaplan, Edward  
 Kassebaum, Frederick  
 Kathrens, Jeannette  
 Kaufman, William  
 Keir, David and Barbara  
 Kelley, Glen David  
 Kenton, Jay and Susan  
 Keough, Karen  
 Kerkvliet, Nancy  
 Kidby, Harold and Mildred  
 Killingsworth, Ken and Marge  
 Kimball, James  
 Kimberly Clark Corporation  
 King, Corey and Barbara  
 King, Raymond  
 Kirkland, Lawrence  
 Klinkhammer, Gary and Susan  
 Klose, Richard and Marilyn  
 Knackstedt, Kenn and Betty  
 Knudsen, James and Joyce  
 Kohlstrand, Rebecca  
 Koki, Kingsley and Gail  
 Koskela, Ronald  
 Koupal, Janet  
 Koza, David and Mary  
 Kraemer Farms  
 Krause, Harland and Mae  
 Krauss, Jr. Lewis and Kathryn  
 Krishnamurthy, Ramesh  
 Kumley, Bobbi  
 Lahm, Lawrence  
 Laird, Donald and Donna  
 Lamb, Maryann  
 Landsberg, Arne  
 Larkin, Robert and Janet  
 Larson, Clark  
 Lathrop, Ernest  
 Leahy, Robert and Rita  
 Lear, Gene and Ruth  
 Lee, Richard and Vickie  
 Leibowitz, Flora  
 Leidig, Glenn and Marian  
 Lemman, Mr & Mrs W T  
 Leppelmeier, John  
 Leslie, Kent  
 Li, Hiram and Judith  
 Liese, Mr & Mrs Grover  
 Lillie, Sarah  
 Lim, Andrew  
 Livermore, James  
 Lockwood, Dwight and Sherri  
 Longstreet, Richard and Hazel  
 Love, Colin  
 Lovejoy, Bill and Martha  
 Low, Peter and Bonita  
 Lund, Dennis and Kathleen  
 Lundgren, Leonard and Kathy  
 Lundt, Jeffrey and Mary

Lynch, David  
 MacDonald, Donald and Elizabeth  
 MacMillan, Paul and Barbara  
 Madrid, Bruno and Lolita  
 Magee, John and Rosemary  
 Magnuson, Sharon  
 Magnusson, Philip and Evelyn  
 Mansfield, Alfred and Margaret  
 Marbott, Ernest  
 Marks, Richard  
 Martin Marietta Corp Fdn  
 Martin, George and Kathy  
 Martin, Jeffrey and Lynne  
 Martin, Mary  
 Martinez, Carlos and Pamela  
 Matsumoto, Masakazu  
 Matthews, Lester  
 Maxwell, Miles  
 Mazzocco, Felix  
 McAllister, Jr, Thomas  
 McArthur, Barbara  
 McBee, James  
 McBride, James  
 McCann, Curtis and Patricia  
 McClintock, Thomas and Patty  
 McCormack, Roger Lee  
 McCullough, Orval and Belva  
 McDaniel, Mina Rae  
 McDougall, Edith  
 McIntosh, Carolynn  
 McKee, Elinor  
 McKinley, Loren and Eileen  
 McMasters, Mark  
 McMorine, David  
 McNamar, Jean  
 McCune, Bruce and Suzette  
 McClain, Thomas and Suzette  
 Meckel, Susan  
 Medicine Shoppe, The  
 Mello, Charles and Melody  
 Meslow, E Charles  
 Messenger, Esther  
 Messer, John and Betsy  
 Meyer, Alice  
 Meyer, Frances  
 Meyer, Kathleen  
 Meyer, Robert and Lavola  
 Miedaner, Donald R  
 Miller, Michael  
 Miller, Ronald  
 Milne, Gary and Janis  
 Minor, Jerry and Evelyn  
 Mitchell, Isa  
 Miyashiro, Ronald and Cal  
 Mobley, Greg and Susan  
 Moen, Kris and Laura  
 Mohn, Herbert and Mary  
 Mohr, Alan  
 Moon, Richard and Barbara  
 Moore, James and Donna  
 Moore, Philip and Elizabeth  
 Moore, Sylvia  
 Morris, Steven  
 Morrow, Danial and Nancy  
 Mortgage Consultants, Inc  
 Morton, Kirk and Jo  
 Motorola, Inc.  
 Mottau, Leo and Janice

Mountain View Medical Center  
 Mueller, Fred A  
 Mueller, Robert and Sharren  
 Muessig, Wayne and Betty  
 Mullenix, James C  
 Murphy, Patrick Kelley  
 Myers, John and Doris  
 Naab, Mary  
 Nagae, Jerry and Marcia  
 National Semiconductor Corp  
 Needham, Paul and Sally  
 Neill, Jr, James and Kathleen  
 Newcomb, Gene and Catharin  
 Nicholls, Michael  
 Nichols, Richard and Valerie  
 Nickel, Gretchen  
 Nike, Inc.  
 Noble, Marvin and Eva  
 Nooteboom, Gary and Anne-Sabine  
 Norton, Peter  
 Nuckton, Carole  
 Nunemacher, Phillip  
 Nunn, Mary  
 O'Harrow, Daniel and Megan  
 O'Toole, Steven and Colleen  
 Oehler, Dennis and Nellie  
 Olf, Nelson  
 Oliver, James and Molly  
 Olleman, Roger and Betty  
 Olson, Mary Jane  
 Olson, Suzanne  
 Oman, Henry and Earlene  
 Orion Capitol Company  
 Otness, Alan and Shari

Overman, William and Bess  
 PPG Industries Foundation  
 Palmer, James and Linda  
 Park, Brian  
 Parsons, Brock  
 Partridge, Willis  
 Pearcy, William  
 Pedersen, Elaine  
 Petersen, Alexander and Lois  
 Peterson, Stacia  
 Pickens, Ann  
 Pierce, Cecil and Marilyn  
 Pierce, Jr, Jerome and Lisa  
 Plant, Thomas and Glenda  
 Polehn, Frank  
 Porter, Robert and Laura  
 Pratt, Clara  
 Pratt, David  
 Pribyl, Steven and Jacqueline  
 Pugh, George and Cheryl  
 Raab, Carolyn  
 Radell, Jr. James and Carol  
 Rank, Larry  
 Rau, Irene  
 Rautio, Arminne  
 Reddy, Satish  
 Reed, Donald and Caron  
 Reeder, Walter and Marcia  
 Reeser, Paul and Melodie  
 Reich, Ulrich and Carol  
 Reinhard, Jr, Robert and Carol  
 Reppeto, Henry and Addis  
 Reser, Michael and Judy  
 Rettig, Jack and June  
 Reynolds, Nicholas and Karen

#### WITH A LITTLE HELP FROM OUR FRIENDS

*In 1991, OSU students made a \$500,000 pledge to the library, paid for by increasing student fees an additional dollar per student per term. In 1995, the Associated Students of Oregon State University passed a bill, initiated by President April Waddy, to begin contributing an additional dollar per term once the expanded library is fully completed. As a result, the contribution by ASOSU to the library will be one million dollars. In addition, the OSU Student Foundation has donated \$50,000, bringing the total student contribution to \$1,050,000.*



*Libby Mitchell, Jon Isaacs, & April Waddy*

*Shown at the Valley Library Groundbreaking, left to right is Libby Mitchell and Jon Isaacs, current Presidents of ASOSU, and April Waddy, past President.*

## ANNUAL GIFTS

### WITH A LITTLE HELP FROM OUR FRIENDS

**G**regory J. Krpalek, class of '75, and his wife Mary, are loyal friends of OSU and the OSU Libraries, shown enjoying the groundbreaking dinner for donors to the OSU Libraries.

Greg, owner of Krpalek Insurance and Financial Services in Albany, serves on the OSU Foundation Board of Trustees and is active with Rotary, The Albany Chamber of Commerce and the Albany Public Schools Foundation. Mary Krpalek is a member of the Council of Regents. Greg will be remembered as the OSU football Rookie of the Year in 1973. He played football under coach Dee Andros and went on to become an All-American in 1975.



Greg & Mary Krpalek

Rhoads, John and Sharon  
Richard, Orvin  
Richardson, Jr, Lewis and Susan  
Richen, Peter and Naomi  
Rielly, Loretta  
Rimbault, Albert and Esther  
Risley, Priscilla  
Rivers, William and Patricia  
Robins, Thomas  
Robinson, Kent  
Roe, Thomas and Linda  
Roegner, Keith  
Rohm & Haas Co.  
Root, Jon  
Rose, Robert and Ann  
Rosebrook, Sandie  
Roth, Stephen and Anna Marie  
Rummel, Douglas and Kerrin  
Runckel, William and Barbara  
Ryan, Michael  
Sager, Robert  
Saito, Jeffrey and Lois  
Sandeno, James and Joan  
Sayre, Henry  
Schacht, David and Evelyn  
Schafer, Joseph  
Schaffer, Kay  
Schlaefel, Jill  
Schlosser, Vincent and Arlene  
Schoenheit, Ronald  
Schorzman, Boyd and Debbie  
Schriener, Jr, Alexander  
Schroeder, Walter and Sally  
Scott, Edward and Shirley  
Seal, Robert and Anna  
Sears, Hayden  
Seitz, Dean and Margaret

Seville, Mary Alice  
Sexton, Charlotte and Harold  
Sexton, Harold  
Seymour, Thomas  
Sharp, Jr, George and Danielle  
Shearer, David and Martha  
Sheffer, R M and Sherrie  
Sheffold, David and Donetta  
Sherman, Richard and Mary  
Short, James and Zeta  
Short, Mr & Mrs Ronald  
Shou, Stephens and Mabel  
Smiley, James  
Smith, Courtland and Linda  
Smith, Helen  
Smith, Jeffrey  
Smith, Lowell  
Smith, Jr, Robert  
Smith, Terry and Joan  
Smith, William  
Snow, Barbara Ann  
Soderholm, Larry  
Sollitt, Charles and Melissa  
Sommers, James & Linda  
Sorbets, Paul and Joan  
Sorum, Marsha  
Southwest Gas Foundation  
Sowa, Michael and Mary  
Starfas, Sam P.  
Stark, Christina  
Starleaf, Karen  
Staton, Warren and Maryanne  
Steed, Diane  
Steinmetz, Eugene  
Steinmetz, Roberta  
Stettler, Joanne  
Stewart, Robert

Stewart, Samuel and Barbara  
Still, James and Betty  
Stolzenbach, James and Christine  
Storm, Robert  
Stout, Benjamin  
Stover, Lawrence and Ramona  
Stranahan, Chapman  
Strand, Roy and Patricia  
Strauss, Steve and Robin  
Stroop, William and Janice  
Stroup, Eldon and Mary Lou  
Strub, P Ted  
Stuntzner, Ronald and Joyce  
Sturgeon, Chris  
Sumida, Kent and Gale  
Summers, Richard and Lyndia  
Sun Microsystem Fdn, Inc.  
Swanson, Frank and Gloria  
Swanson, Frederick and Mary  
Sweek, Michael  
Swinyard, James and Janet  
Switzer, Jerald and Vivian  
Syed, Jaffer and Kathleen  
Tabor, Bruce  
Talbert, Ray and Carol  
Tang, Jabo and May  
Tarantino, Sal and Karen  
Tatchell, Kelly George  
Tavipatana, Wattanaporn  
Taylor, Mitchell and Beth  
Taylor, Ronald  
Ten Pas, Henry  
Tenny, Susannah  
Texaco Philanthropic Fdn.Inc.  
Texas Instruments Foundation  
Thielman, Peter and Loretta  
Thompson, Allan and Geraldine  
Thompson, Gene and Charlotte  
Thorstad, Arthur and Barbara  
Ticknor, Robert  
Timm, Karen  
Tingelstad, Gertrude  
Tipley, Roger and Laurie  
Toftemark, Lars  
Tower, Bruce  
Tune, Lee and Margaret  
UPS Foundation, Inc.  
US Bancorp  
Unger, Robert  
United Way of Santa Clara Co  
Unocal Foundation  
Unzicker, William and Mildred  
Upatisringa, Visutdhi and Sally  
Utzinger, Nicholas  
Vail, Doreen Westin  
Van Etten, Donald and Tamara  
Van Pelt, Eric and Kathryn  
Van Vliet, Antone and Louise

Vanderheyden, Jon  
Vertregt, R L and Rosemary  
von Aberg, Hans and Anne  
von der Hellen, Ronald and Betty  
Waggoner, James and Audrey  
Wallberg, William and Jeanne  
Walls, Robert and Dorothy  
Ward, Laurie  
Ward, Steven and Kimberly  
Waring, Richard and Doris  
Warnack Pharmacy  
Warnath, Charles and Maxine  
Warner, John and Alice  
Warwick, William  
Watanabe, Alvin  
Weaver, Mark  
Weber, James and Nancy  
Weerts, Dan and Katie  
Wehner, Michael and Marie  
Weigel, Lloyd and Juanita  
Weinert, Harry and Lois  
Weiser, Conrad and Adrienne  
Wess, Robert  
West, Inez  
Western, Samuel and Anne  
Weswig, Kathleen  
Whanger, Philip and Lois  
White, Ski and Kris  
Wickett, Lloyd and Kathleen  
Wierson, Carol and Myrna  
Wiest, Gertrude  
Wilbanks, Richardson and Arta  
Williams, Wendy  
Wills, Michael and Judith  
Wilson, Ryce and Fern  
Winkler, Clifford  
Winn, Buford and Anita  
Winnop, Robert  
Winter, Lance Rodger  
Winters, Eugene and Leona  
Winters, Ronald and Marsha  
Wirth, Dennis and Karen  
Withers, Lawrence and Velvet  
Wolfe, John and Martha  
Wong, Jimmy and Jaime  
Wong, Thomas C.  
Wrahtz, Walter and Angela  
Wright, Donald E  
Wroble, Vincent  
Yang, Niann Luu and Rolanda  
Yapp, Margot  
Yoshihara, Grant  
Young, Gene and Sandra  
Young, J Lowell and Ruth Ann  
Zaworski, Priscilla  
Zielinski, John  
Zier, David and Arlene  
Zobel, Donald and Priscilla

**A** very special thank you goes to the more than 6,000 generous alumni and friends who made gifts of under \$100 to the OSU Libraries during the year. We are most grateful for your support.

## THE BENEFITS OF MEMBERSHIP

As a Friend of the OSU Libraries, you receive:

- Special circulation and stack privileges for Library materials
- A copy of the *Messenger*, the biannual Library newsletter
- Invitations to exhibits, lectures and receptions

The Friends welcome everyone interested in the continued excellence of the Oregon State University Libraries. Today, more than 8,000 Library Friends are dedicated to the support of the Library's collections and services.

## INVESTING IN EXCELLENCE

Membership in the Friends of the Library is your investment in excellence. Your support enables the OSU Libraries to deliver information to students and faculty, and to individuals and businesses throughout the world. **Please invest today!**

Name \_\_\_\_\_

Address \_\_\_\_\_

City \_\_\_\_\_

State \_\_\_\_\_ Zip \_\_\_\_\_

Home Phone \_\_\_\_\_ Work Phone \_\_\_\_\_

## INVESTMENT AND MEMBERSHIP LEVELS:

- \_\_\_ \$1,000,000 The Harris Society
- \_\_\_ \$250,000 The Strand Society
- \_\_\_ \$100,000 Linus Pauling Associate
- \_\_\_ \$50,000 Trysting Tree Society
- \_\_\_ \$25,000 William Jasper Kerr Society
- \_\_\_ \$10,000 Kidder Hall Society
- \_\_\_ \$5,000 Delpha & Donald Campbell Librarian's Circle
- \_\_\_ \$1,000 Benefactor
- \_\_\_ \$500-\$999 Patron
- \_\_\_ \$250-\$499 Sponsor
- \_\_\_ \$100-\$249 Supporting Friend
- \_\_\_ \$35-\$99 Friend
- \_\_\_ \$15-\$34 Student Friend

**Please return your investment along with this form to:**

Oregon State University Foundation  
517 Snell Hall  
Corvallis, OR 97331-1653

Please make your check payable to:  
*The OSU Foundation*

**Please send me information about:**

- \_\_\_ Life income opportunities.
- \_\_\_ Including OSU Libraries in my will.
- \_\_\_ Benefits of making a gift of appreciated securities.
- \_\_\_ Making a gift of real estate.
- \_\_\_ Making a gift of life insurance.

## MAKE A DIFFERENCE, BE A FRIEND

- Tell others about the Friends.
- Consider a gift to the Library.
- Consider including the library in your will.
- Make your gift grow. Many companies will match monthly or payroll deduction gifts, as well as annual gifts. Ask for your employer's matching gift application.
- Send us names of potential members and contributors.
- Share the *Messenger* with others.
- Pass on information about Library Friends membership in your newsletter or publications.







## FRIENDS OF THE OSU LIBRARIES

Oregon State University  
121 Valley Library  
Corvallis, OR 97331-4502

Non-Profit Org.  
U.S. Postage  
**PAID**  
Corvallis, OR  
Permit No. 200

### YOU CAN BANK ON THIS GIFT!

**W**hen you support The OSU Libraries through a gift annuity, you receive lifetime income at a fixed payout rate, a tax deduction, and the satisfaction of giving to the area of your choice.

#### SAMPLE RATES - ONE LIFE

Age	% Payout
55	5.9%
60	6.1%
65	6.5%
70	6.9%
80	8.8%
90 or over	11.0%

*We welcome your inquiry. For complete information, call or write:*



Joseph W. Skehen, Director  
Charitable Estate Planning, OSU Office of Development  
527 Snell Hall, Corvallis, OR 97331-1650  
1-800-354-7281 or 503-737-2884

