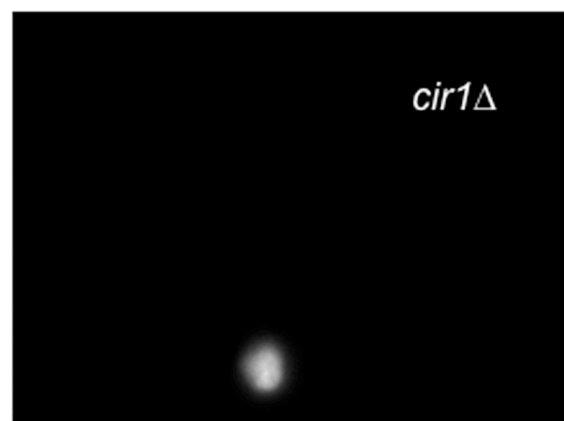
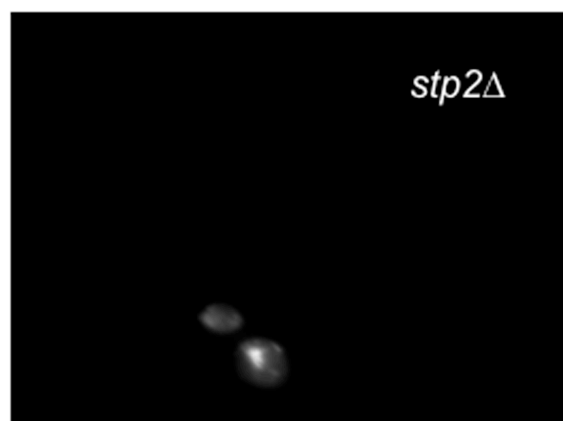
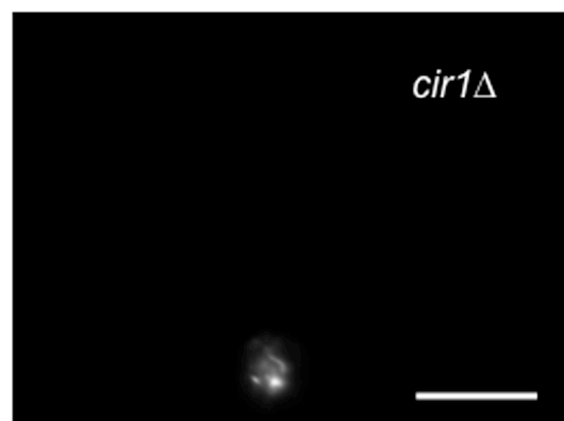


**Figure S1. DAPI-staining of AuTMAT-resistant mutants. Upper panels, DAPI fluorescence; lower panels, autofluorescence. BY4742 and KK86 are positive and negative controls for the presence of mitochondrial DNA, respectively. Reference bars, 10  $\mu$ m.**



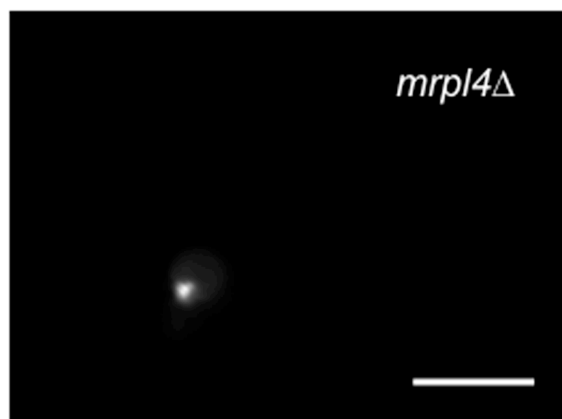
*trk1* $\Delta$

*nam2* $\Delta$

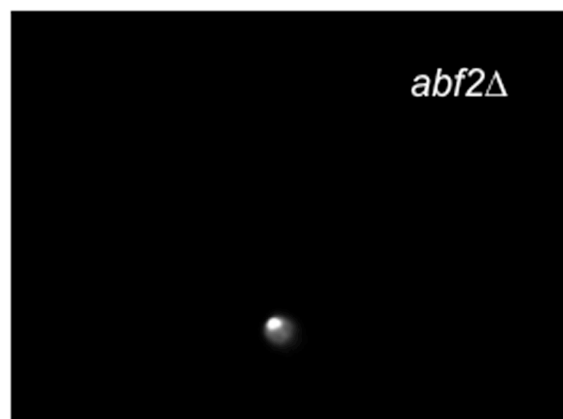
*trk1* $\Delta$

*nam2* $\Delta$

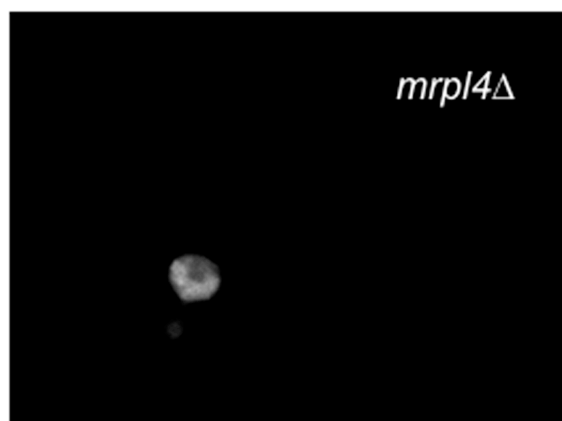
*mrpl4* $\Delta$



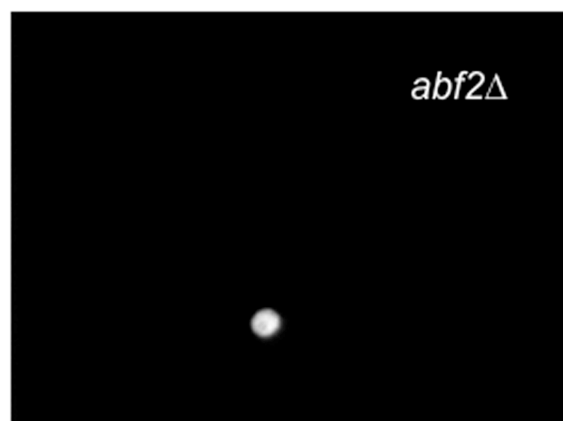
*abf2* $\Delta$

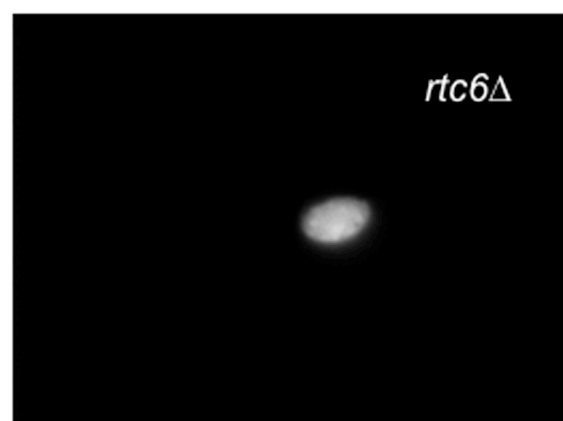
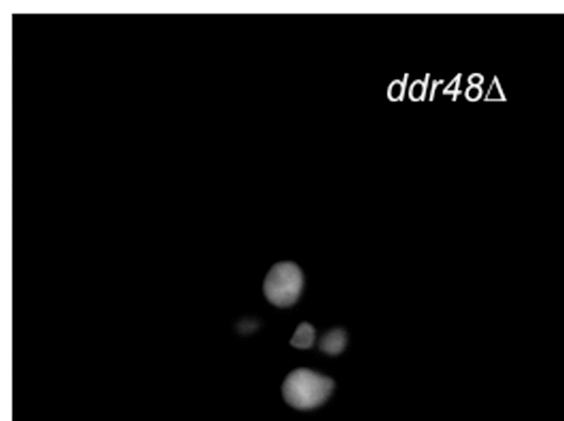
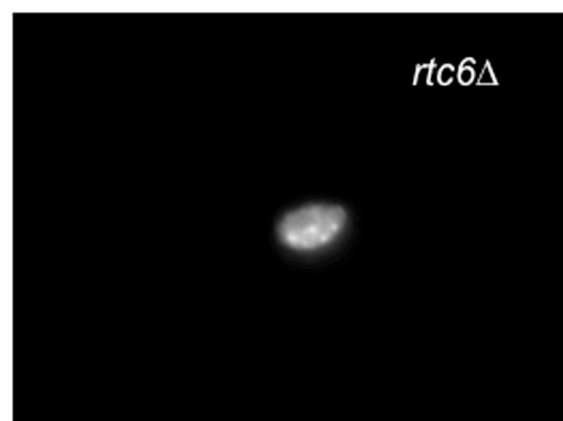
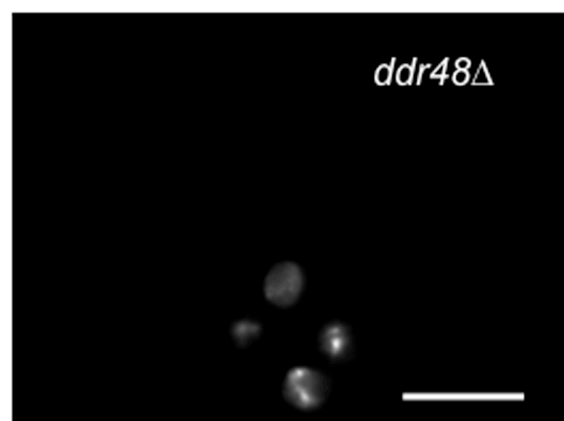


*mrpl4* $\Delta$



*abf2* $\Delta$





*ubp8* $\Delta$



*gyl1* $\Delta$



*ubp8* $\Delta$



*gyl1* $\Delta$



