



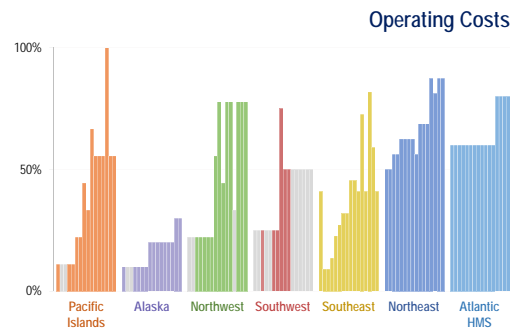
# NOAA FISHERIES Collection of U.S. Commercial Fisheries Costs

**Overview** In 2001, NOAA Fisheries implemented a strategic initiative to improve commercial fisheries economic data. Prior to 2001, cost data collections were sporadic with no data collected in some regions. All regions have improved their cost data coverage. As of 2016, operating cost data is available for 30% or more of fisheries in most regions and 80% or more in the Northeast and in Atlantic highly migratory species. Fixed cost data is available at coverage rates of 20% or more in most regions and at rates of 80% or more in some regions.

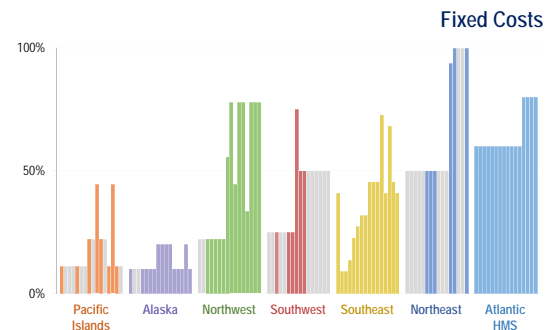
Cost data are collected using a variety of methods. Surveys vehicles such as mail, telephone, in-person, web, and add-ons to existing logbook and observer programs are used. Some surveys are mandatory while others are voluntary. For some fisheries, a census of trips are surveyed but most are sampled. All fixed costs are collected at an annual level. Operating costs are collected at a trip level for some fisheries and at an annual level for others. Some collections are ongoing (logbook/observer programs) while others are one to seven year intervals.

## Regional Overview: Percent of Fisheries with Fishing Vessel Cost Data (2001-2016)

No Data Collected



**OPERATING COSTS** = Expenses that vary with the length and number of fishing trips.  
Examples: Cost of fuel, food, fishing supplies, hired crew, etc. *Actual cost items collected may differ among regions.*

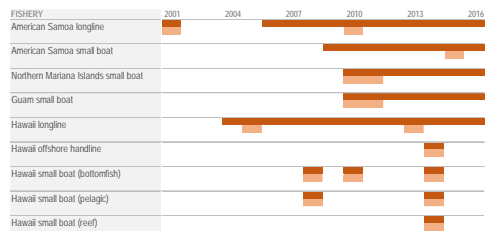


**FIXED COSTS** = Expenses that are incurred regardless of the level of fishing effort.  
Examples: Cost of insurance, interest, accounting/legal fees, etc. *Actual cost items collected may differ among regions.*

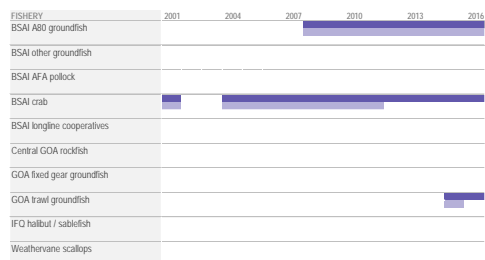
## Fishing Vessel Cost Data Collections by Region (2001-2016)

**LEGEND** Bars = Data Collected | **FOR EACH FISHERY:** Operating Cost = Top bars | Fixed Cost = Bottom bars

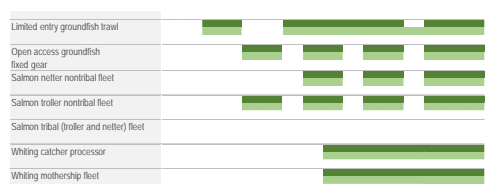
### Pacific Islands



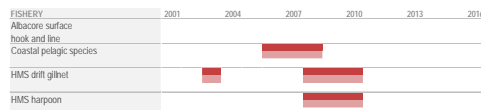
### Alaska



### Northwest



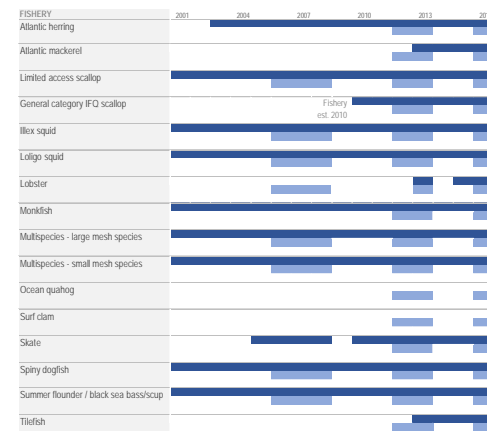
### Southwest



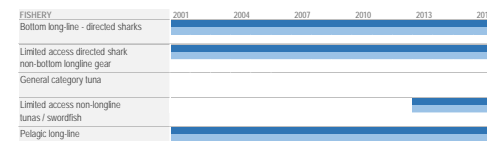
### Southeast



### Northeast



### Atlantic HMS



**CITATION** Thunberg, E., et al. 2015. **A Snapshot of NOAA Fisheries Data Collection of Commercial Fishery Costs.** U.S. Dept. of Commer., NOAA Technical Memorandum NMFS-F/SP0-154, 331 p.

**CONTACT** Andrew Kitts | [andrew.kitts@NOAA.gov](mailto:andrew.kitts@NOAA.gov)