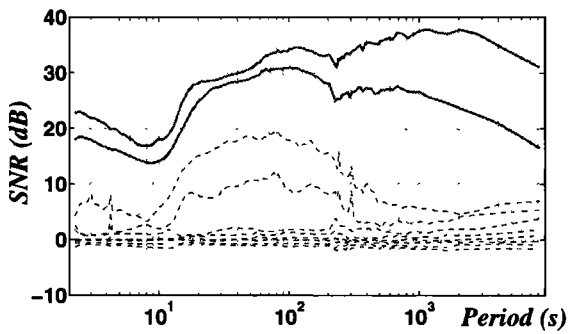


**Correction to “DC trains and Pc3s: Source effects in mid-latitude geomagnetic transfer functions” by Gary D. Egbert, Markus Eisel, O. Sierra Boyd, and H. Frank Morrison**

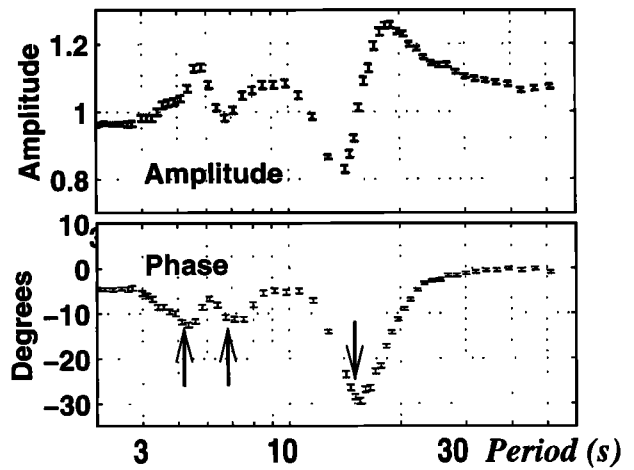
Gary D. Egbert and Markus Eisel  
 College of Oceanic and Atmospheric Sciences, Oregon State University, Corvallis, OR

O. Sierra Boyd and H. Frank Morrison  
 Engineering Geoscience, University of California, Berkeley, CA

In the paper, “DC trains and Pc3s: Source effects in mid-latitude geomagnetic transfer functions” by Egbert et al., *Geophysical Research Letters* 27 [1] 25–28, Figures 2 and 4 were inadvertently transposed. They appear correctly below with their captions.



**Figure 2.** Eigenvalues of the scaled SDM for the PKD/SAO array provide clear evidence for coherent noise for periods from 10-300 s.



**Figure 4.** Amplitude and phase of  $T_{xx}$ , with statistical error bars, computed using data from days 252-257, during the BART strike. The three distinct phase lows (arrows) are interpreted to be the fundamental and first two harmonics of the Pc3 field line resonance

(Received March 24, 2000.)