

630.71
Or 3el
e. 3
no. 147

Oregon State Agricultural College

Extension Service

B. D. HETZEL, Director

DOCUMENT
COLLECTION
OREGON
COLLECTION.

DISCARD

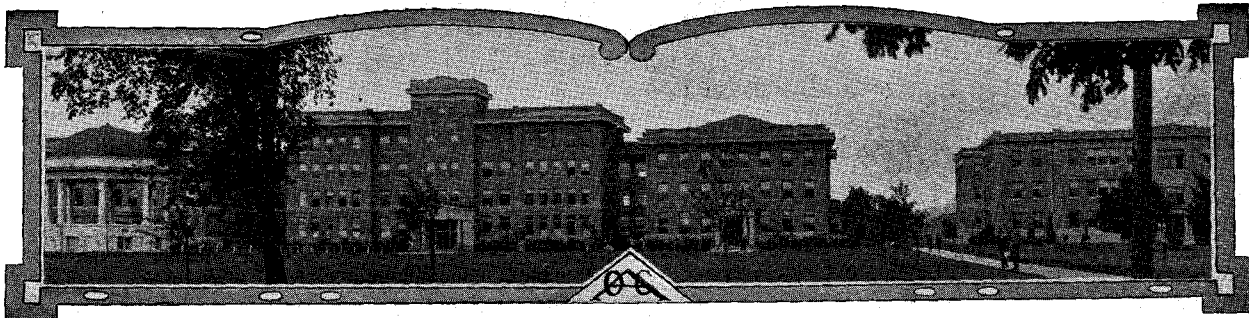
LECTURE ANNOUNCEMENTS

School of Commerce

CORVALLIS, OREGON.

IMPORTANT NOTICE.

Particular attention is called to the fact that arrangements for service must be made at least a month in advance. Particularly is this true in the case of distant points. In such cases, the College will attempt to arrange for a series of engagements in order that the expenses may be properly limited and the time of the instructor away from the College may likewise be limited. Write to the Extension Service for terms and particulars.



FACULTY OF THE SCHOOL OF COMMERCE.

W. J. Kerr, D. Sc., President of the Oregon Agricultural College
John Andrew Bexell, A. M., Dean

ACCOUNTING AND BUSINESS MANAGEMENT.

John Andrew Bexell, A. M.
Erwin Bertram Lemon, B. S.
Russell Marion Howard, B. S.
Charles Lewis Parrish, C. P. A.

ECONOMICS AND SOCIOLOGY.

Hector Macpherson, Ph. D.
Louis August Rufener, Ph. D.
Newland Howland Comish, M. S.
Guilford Lansing Hurd.

GOVERNMENT AND BUSINESS LAW.

Ulysses Grant Dubach, Ph. D.
Chester Collins Maxey, M. A.
Jesse Franklin Brumbaugh, A. M., LL. B.

OFFICE TRAINING AND STENOGRAPHY.

Herbert Townsend Vance.
Etha Mabel Maginnis.

HISTORY.

John B. Horner, A. M., Litt. D.

The members of the Faculty of the School of Commerce are prepared to give general lectures and lectures in their respective fields of study to **high school classes**, departmental meetings, high school assembly meetings, faculty meetings, and high school commencement exercises.

SUGGESTED LECTURE TOPICS.

Earning, Spending and Saving. (Illustrated with Charts.)
The Pork Barrel in Congress.
Early History of Oregon. (Illustrated with slides.)
Simplified City Government. (Illustrated with Charts.)
State's Money Getting and Spending System. (Illustrated with Charts.)
Typical Bookkeeping Problems.
Where and How to Invest Savings.
The Creative Instinct.
Cooperation in Marketing.
Why Study Economics?
A Trip Through a Government Grave Yard—The Dead Letter Office. (Illustrated.)
Elements of Success. (Illustrated with Charts.)
Address the Extension Service of the College, indicating the service desired.

