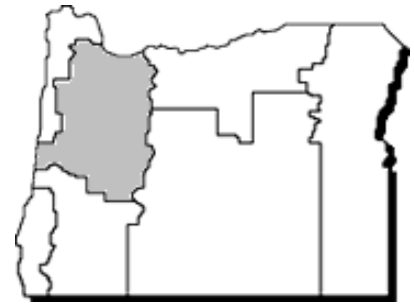


# Commodity Data Sheet

## Hazelnuts



Commodity number-year: 5150-05\*

Extension Economic Information Office  
 Oregon State University  
 219 Ballard Extension Hall  
 Corvallis, OR 97331-3601 (541) 737-1436

**September 2006**

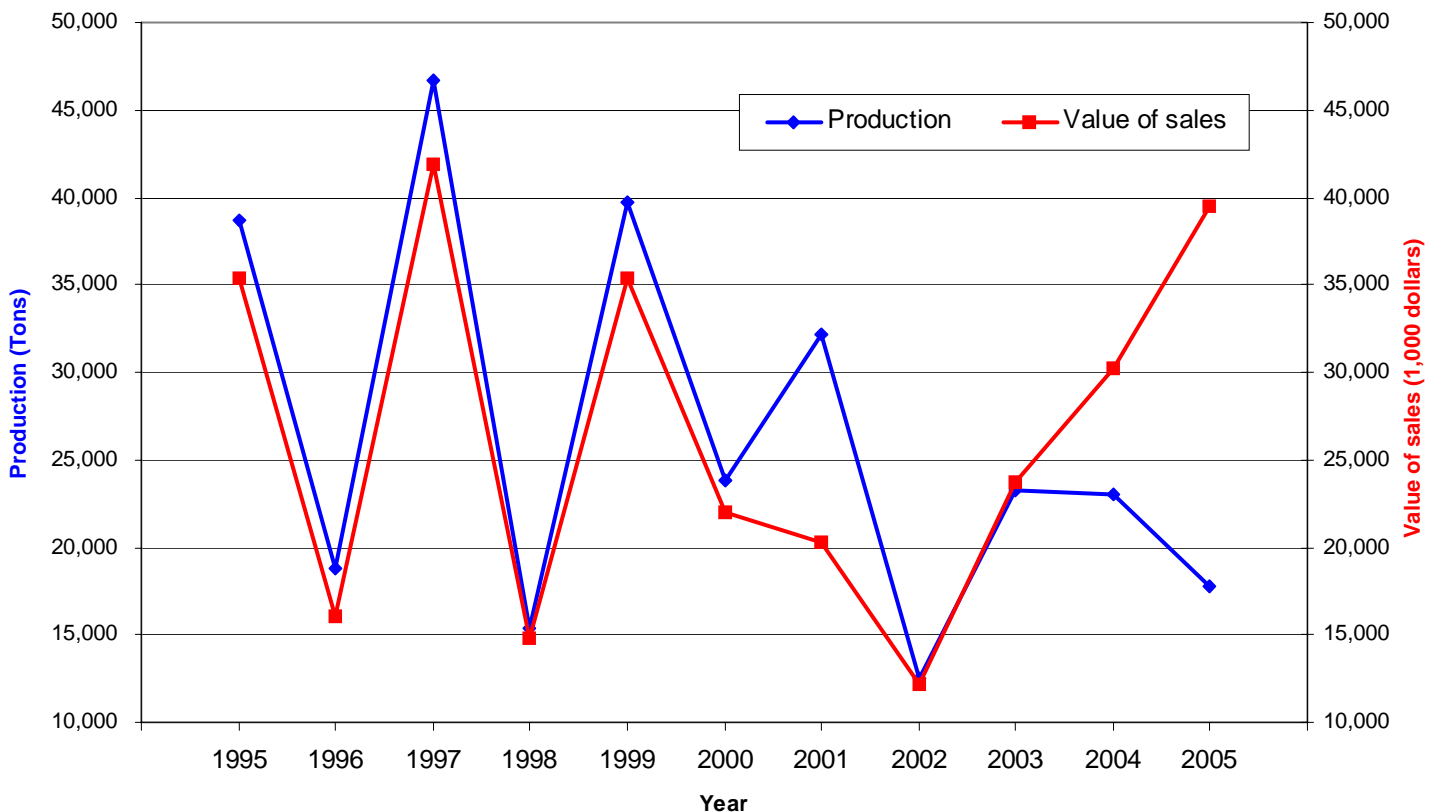
Item and area	Unit	2001	2002	2003	2004	2005
<b>Oregon</b>						
Bearing acreage	<i>Acres</i>	29,000	29,200	28,000	28,400	28,300
Yield per acre (in-shell basis)	<i>Tons</i>	1.71	0.67	1.35	1.32	0.98
Production (in-shell basis)	<i>Tons</i>	49,500	19,500	37,900	37,500	27,600
Utilization of sales:						
Sold in shell	<i>Tons</i>	32,500	13,000	22,100	22,000	14,600
Sold shelled	<i>Tons</i>	17,000	6,500	15,800	15,500	13,000
Shelled meats produced	<i>Tons</i>	6,800	2,600	6,300	5,900	4,900
Farm price	<i>Dollars/ton</i>	701.00	1,000.00	1,030.00	1,440.00	2,240.00
Value of utilized production	<i>1,000 dollars</i>	34,700	19,500	39,037	54,000	61,824

\*Shaded areas of map represent the major areas of production for this commodity.

Source: USDA/NASS (National Agricultural Statistics Service)

Electronic access to this publication is available at: <http://oregonstate.edu/oain/>. Click the Commodity Data Sheets button.

**Hazelnuts: Production and value of sales, Oregon, 1995-2005**



Source: Oregon Agricultural Information Network (OAIN), Extension Economic Information Office, Oregon State University

## Hazelnuts: Acreage, yield, production and value of sales, by county, Oregon, 2003-2005

County	Bearing acreage			Yield per acre		
	2003r	2004r	2005p	2003r	2004r	2005p
	<i>Acres</i>	<i>Acres</i>	<i>Acres</i>	<i>Pounds</i>	<i>Pounds</i>	<i>Pounds</i>
Benton	380	390	400	2,100	2,050	1,750
Clackamas	4,205	4,205	3,830	1,800	1,800	1,350
Douglas	105	110	112	2,250	2,100	2,050
Lane	3,310	3,200	3,300	2,100	2,000	1,750
Linn	1,400	1,450	1,500	2,100	1,800	1,850
Marion	6,085	6,085	5,800	1,350	1,380	1,040
Multnomah	55	55	45	1,820	1,830	1,370
Polk	2,250	2,250	2,340	1,350	1,360	1,020
Washington	4,780	4,780	4,610	1,800	1,810	1,360
Yamhill	6,245	6,245	6,350	1,300	1,310	980
<b>State total</b>	<b>28,815</b>	<b>28,770</b>	<b>28,287</b>	<b>1,620</b>	<b>1,600</b>	<b>1,260</b>

County	Total production			Value of sales <sup>1/</sup>		
	2003r	2004r	2005p	2003r	2004r	2005p
	<i>Tons</i>	<i>Tons</i>	<i>Tons</i>	<i>1,000 dollars</i>	<i>1,000 dollars</i>	<i>1,000 dollars</i>
Benton	399	400	350	407	455	700
Clackamas	3,785	3,785	2,585	3,861	5,148	5,946
Douglas	118	116	115	120	151	219
Lane	3,476	3,200	2,888	3,546	3,712	5,776
Linn	1,470	1,305	1,388	1,499	1,484	2,776
Marion	4,107	4,199	3,016	4,189	5,711	6,937
Multnomah	50	50	31	51	68	71
Polk	1,519	1,530	1,193	1,549	2,081	2,744
Washington	4,302	4,326	3,135	4,388	5,883	7,211
Yamhill	4,059	4,090	3,112	4,140	5,562	7,158
<b>State total</b>	<b>23,285</b>	<b>23,001</b>	<b>17,813</b>	<b>23,751</b>	<b>30,254</b>	<b>39,536</b>

r - revised, p - preliminary. 1/ Totals may not add due to rounding. The Extension Economic Information Office uses different methods than USDA/NASS to set these estimates.

Source: Oregon Agricultural Information Network (OAIN), Extension Economic Information Office, Oregon State University