

630.71  
Or3c1  
no. 514  
c. 3

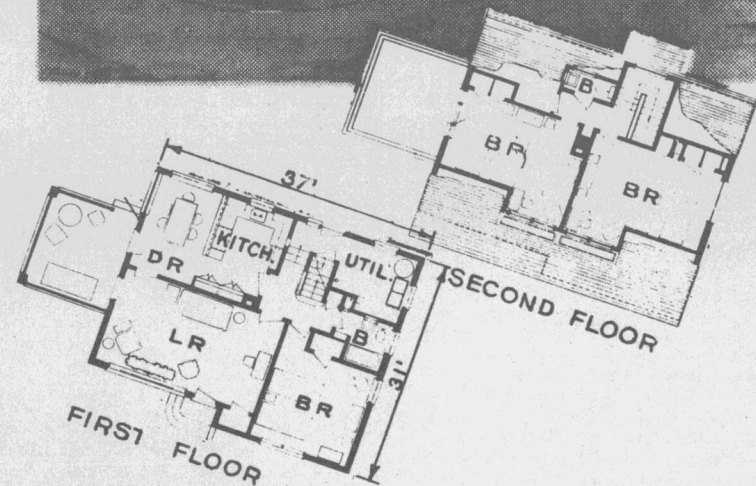
# Oregon Farmhouse Plan Service

## Oregon State College Extension Service

### EXCHANGE PLAN NO 7016



On conventional lines but with modern detail, this  $1\frac{1}{2}$ -story house has a rear entrance hall from which every room and basement can be reached without passing through other rooms. There is a good-sized workroom at grade level. One ample bedroom and bath are on the first floor. Kitchen and dining areas are combined in one room but separated by arrangement of the cabinets. A large picture window in the living room and large windows in the dining space give good views and air circulation. Convenient to the kitchen is a large end porch open on three sides, and there is an airing deck over the porch, reached from one of the two second-floor bedrooms. There are seven large closets in addition to a large storage area. Shown in brick, the plan is suited to any type of frame or masonry construction.



From U. S. D. A. Leaflet entitled:  
Announcing Six New Farmhouse Plans, 1947

Extension Circular 514

Cooperative Extension Work in Agriculture and Home Economics  
Wm. A. Schoenfeld, Director

Oregon State Agricultural College and United States Department of Agriculture, Cooperating  
Printed and distributed in furtherance of the Acts of Congress of May 8 and June 30, 1914