

Make ditch clearing easy with

AN EASY-TO-CLEAN CONCRETE CHECK



Federal Cooperative Extension Service

Oregon State College • Corvallis

Cooperative Extension work in Agriculture and Home Economics, F. E. Price, director. Oregon State College and the United States Department of Agriculture cooperating. Printed and distributed in furtherance of Acts of Congress of May 8 and June 30, 1914.

Extension Circular 575

November 1954

Easy to clean

Easy to install

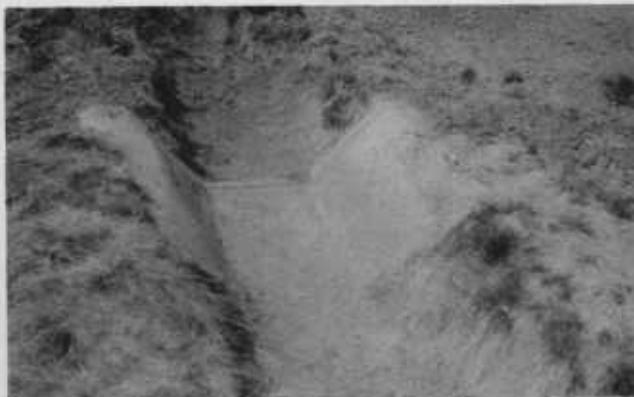
Resists washouts



1. Remove the panel.

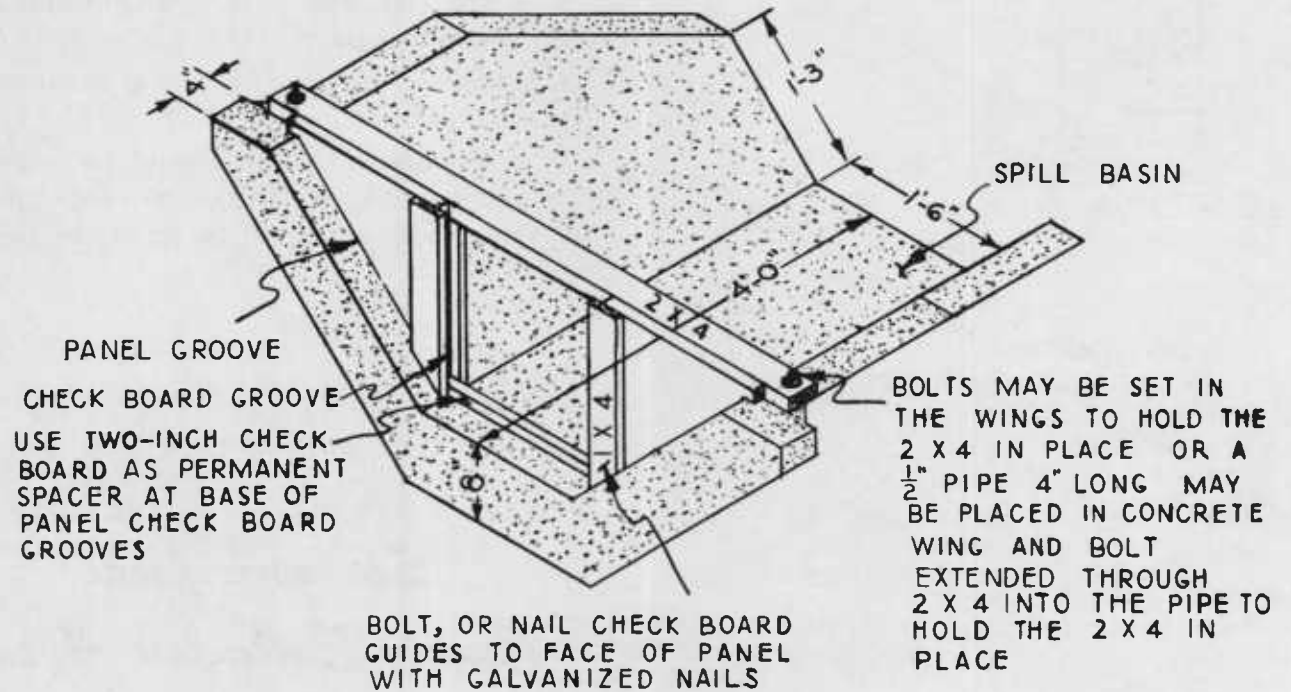


2. Use your ditcher.



3. It's clean!

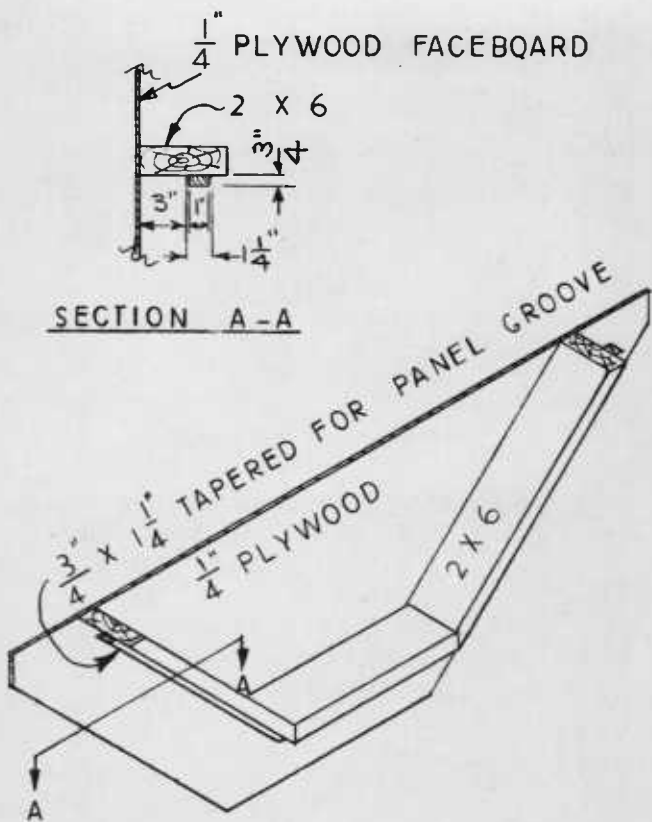
Concrete Check Details



CONSTRUCTION STEPS

1. The shape of the concrete portion of the form should correspond to the shape of the ditch itself. Using the headwall form as a guide, cut and form the ditch to the desired shape. Cut a channel for the headwall wings 4 inches wide and 8 inches deep for medium soils, or 12 inches deep for sandy soils.
2. Cut channel 4 inches wide and 6 inches deep for wing and cutoff wall at foot of spill basin if the soil is sandy, or if the ditch has more than 2 inches fall in 100 lineal feet.
3. Place welded wire-mesh reinforcement in position in all walls and spill basin floor.
4. Pour concrete into bottom of stilling basin and headwall to a depth of 4 inches.
5. Work headwall form into place.
6. Plaster side of stilling basin with concrete, using shovel and trowel. Work concrete well around panel-groove form in the headwall wings.
7. Insert bolts or pipe into headwall wings.
8. Let set approximately 1 1/2 hours and remove forms.

Form Details



CONSTRUCTION STEPS

1. Measure the width of the top of the ditch, the depth of the ditch, and the width across the bottom (never make this less than 18 inches).
2. Lay this out on a piece of $\frac{1}{4}$ -inch plywood.
3. Cut 2 x 6 to fit inside this layout and nail in place.
4. Taper and nail in place the $1\frac{1}{4}$ -inch panel-groove form.
5. Cut the plywood face to shape so that it extends a full 8 inches outside of 2 x 6 form boards.

HELPFUL SUGGESTIONS

1. Treat form with old crankcase oil before using.
2. Allow not more than 8 inches drop between checks.
3. Make sure that form is plumb and level when final pouring is made.
4. Use 2 x 4 on edge as form at lower end of stilling basin.
5. All lumber in panel should be redwood, cedar, or treated. Use rough lumber except for check boards, which should be planed.

*See your local
County Extension Agent
for further information
on irrigation structures.*