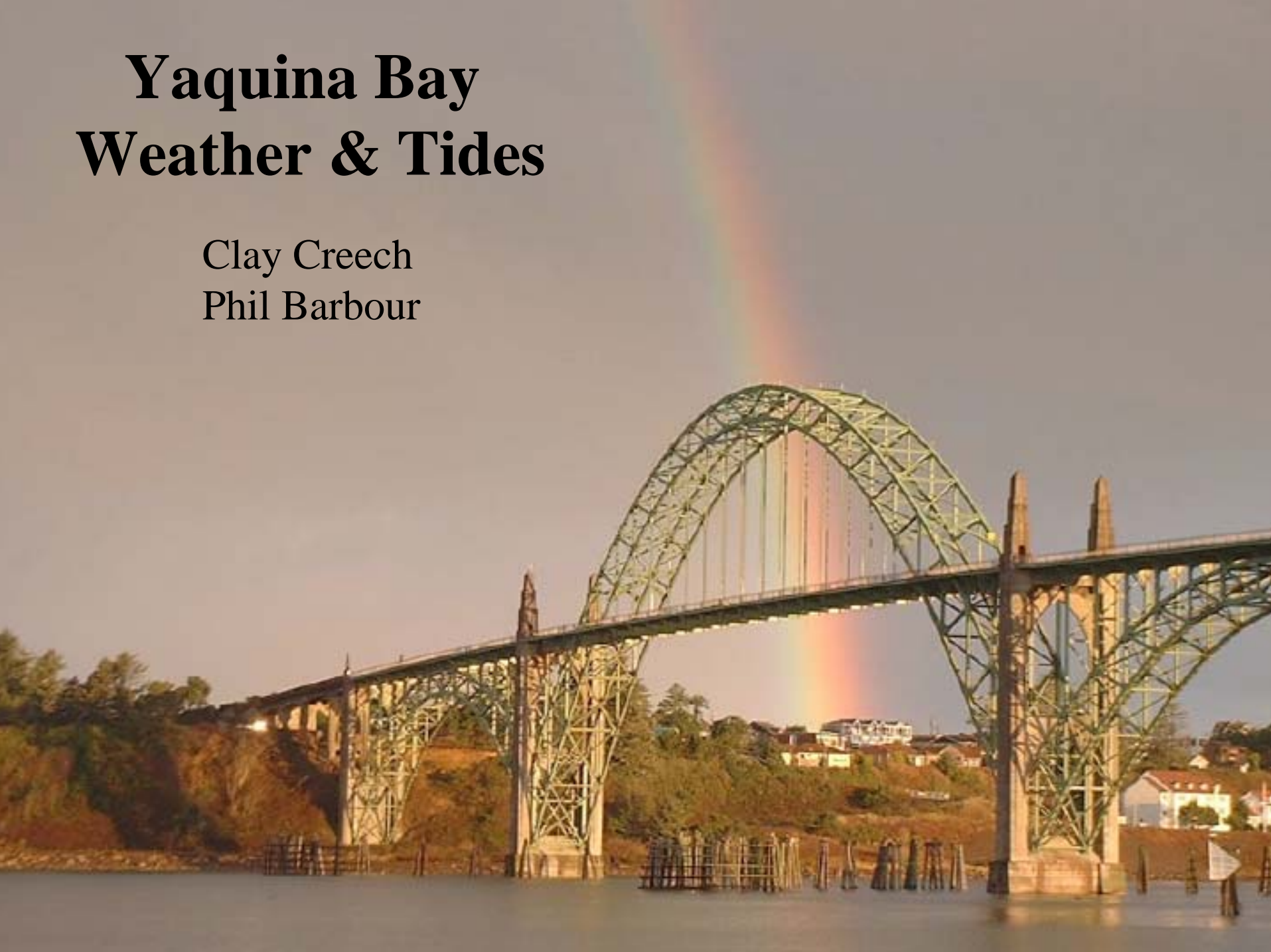


Yaquina Bay Weather & Tides

Clay Creech
Phil Barbour



HMSC Weather Station



Temp-Humidity Sensor at Library



Webcam at HMSC



[Click on picture for larger view](#)

**Current Weather conditions at the
HATFIELD MARINE SCIENCE CENTER**

Newport, Oregon (44° 37.3' N, 124° 2.8' W)

11:47 a.m. PST, January 11, 2006

We have winds out of the WSW at 9 mph.

The current outside temperature is 51.4 °F and rising.

Barometric pressure is steady and is currently at 30.08 inches.

Precipitation for the last hour/today/this month is 0.00 / 0.14 / 7.47 inches

Useful Links

[Newport Forecast](#)

[Yaquina Bay Tide](#)

[Weather Links](#)

[Satellite Photos](#)

[Web Cameras](#)

WIND (mph)	Speed	Direction (True)	Max Winds Today			Humidity
	9	WSW	45 mph	WSW	6:10 a.m. PST	74 %
TEMPERATURE (Deg F)	Current	Low	High	Dew Point	Wind Chill	Lowest Wind Chill
	51.4	46.4 7:05 a.m. PST	51.5 12:14 a.m. PST	43.4	51.4	38.1 7:03 a.m. PST
PRECIPITATION (inches)	Prev. 60 min.	Since Midnight	Prev. 7 Days	This Month	Monthly Mean	This Year
	0.00	0.14	5.93	7.47	10.24	7.47

[PRESSURE](#)
(inches Hg)

Current

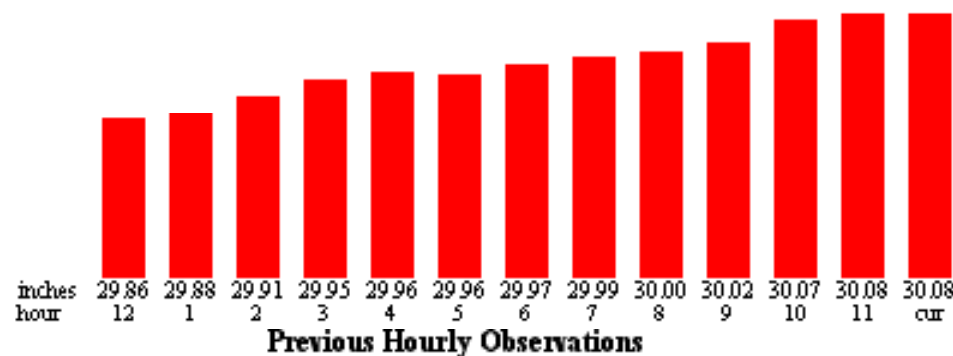
30.08
1018.7 mb

High

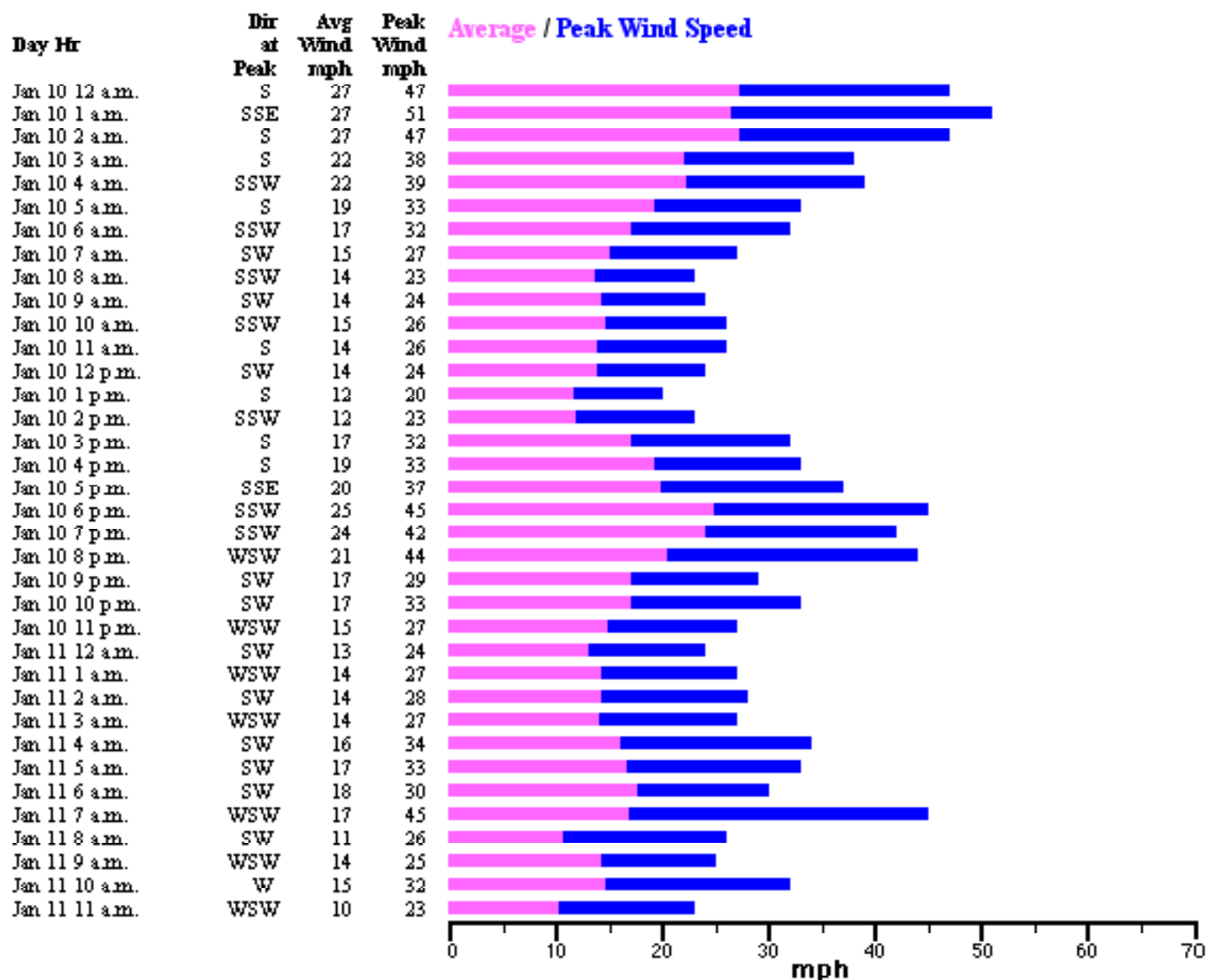
30.09
1018.9 mb
11:40 a.m. PST

Low

29.86
1011.2 mb
12:00 a.m. PST

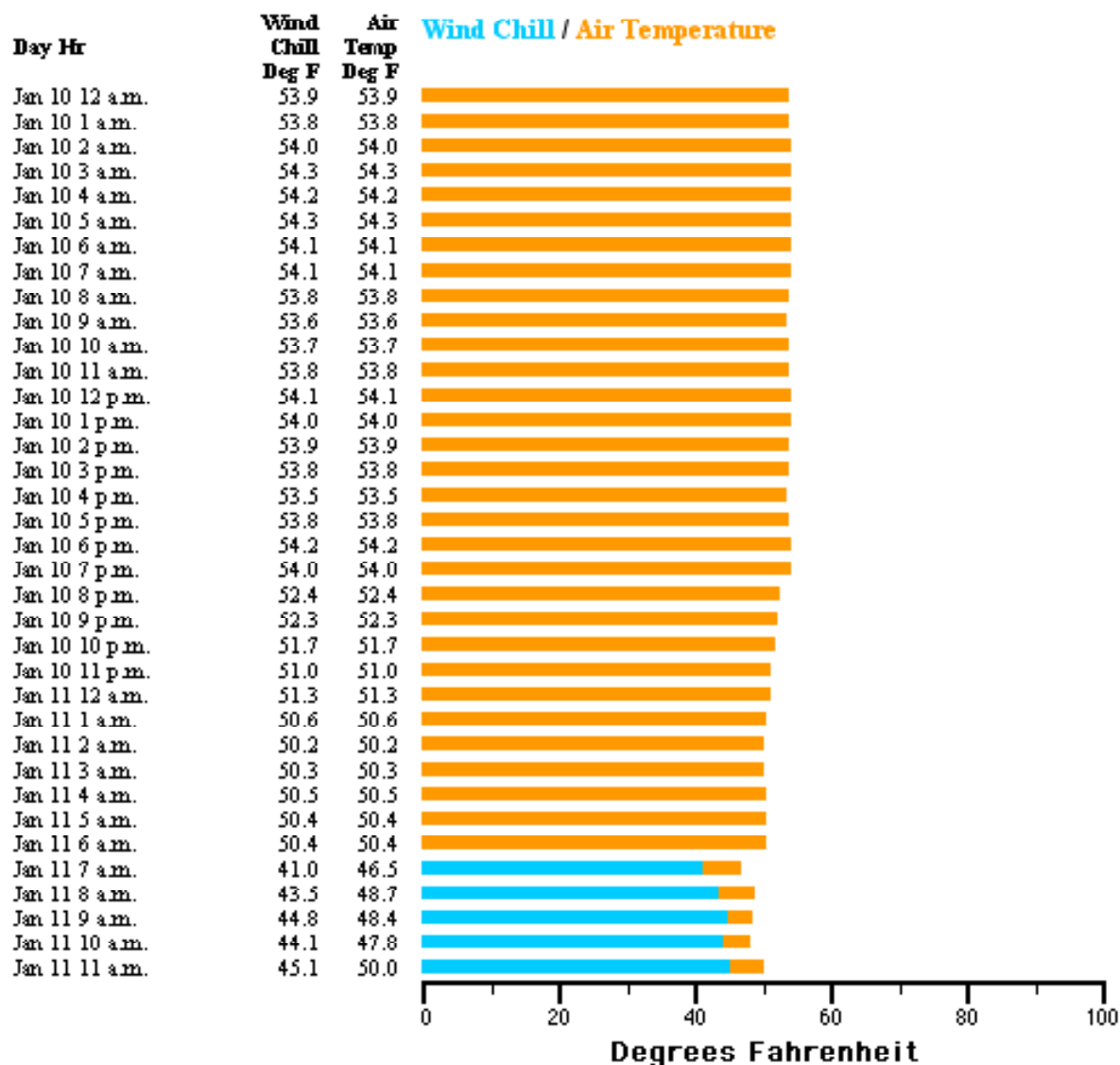


Wind Speed during preceding hour

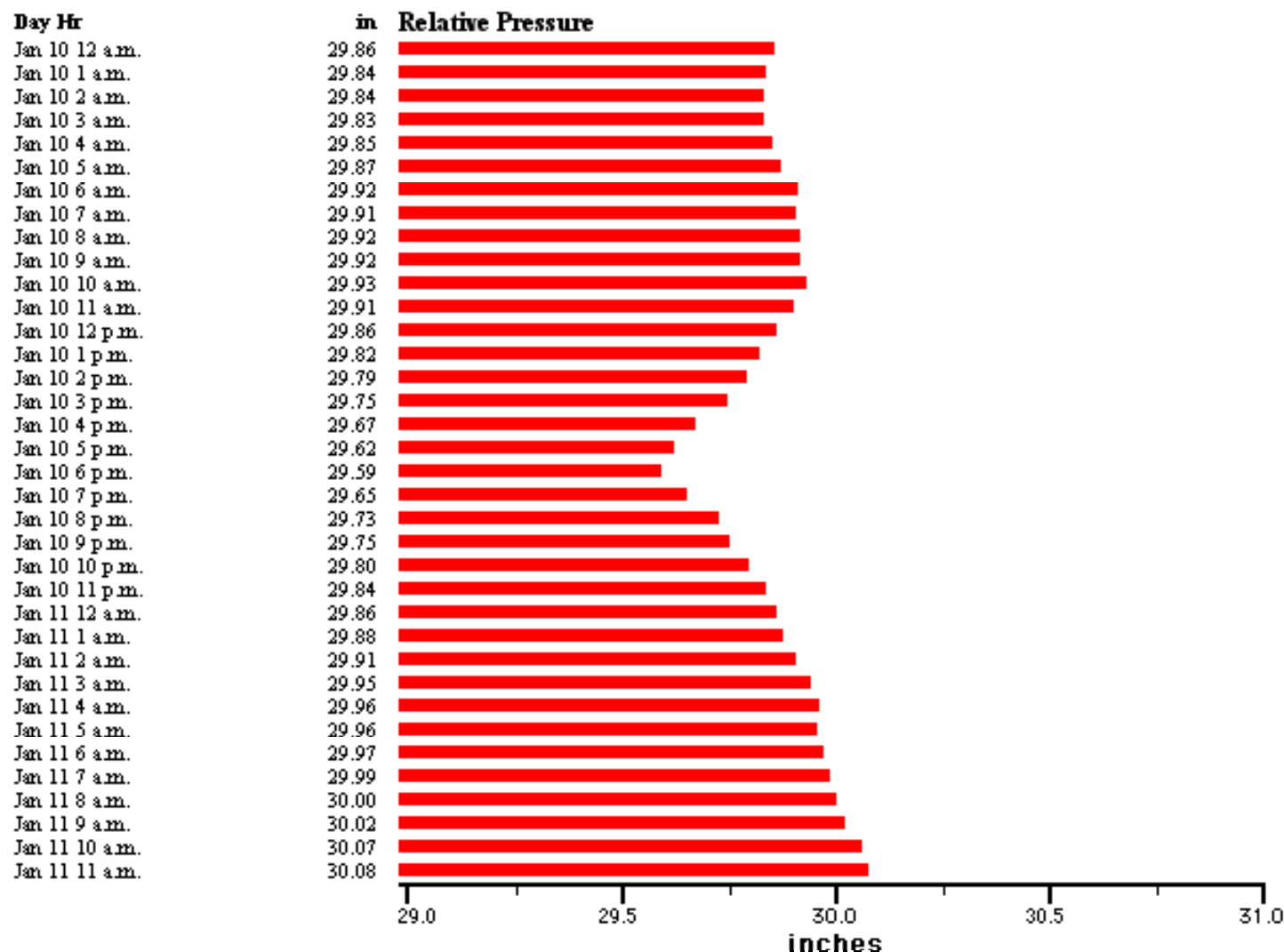


Temperature on the hour indicated

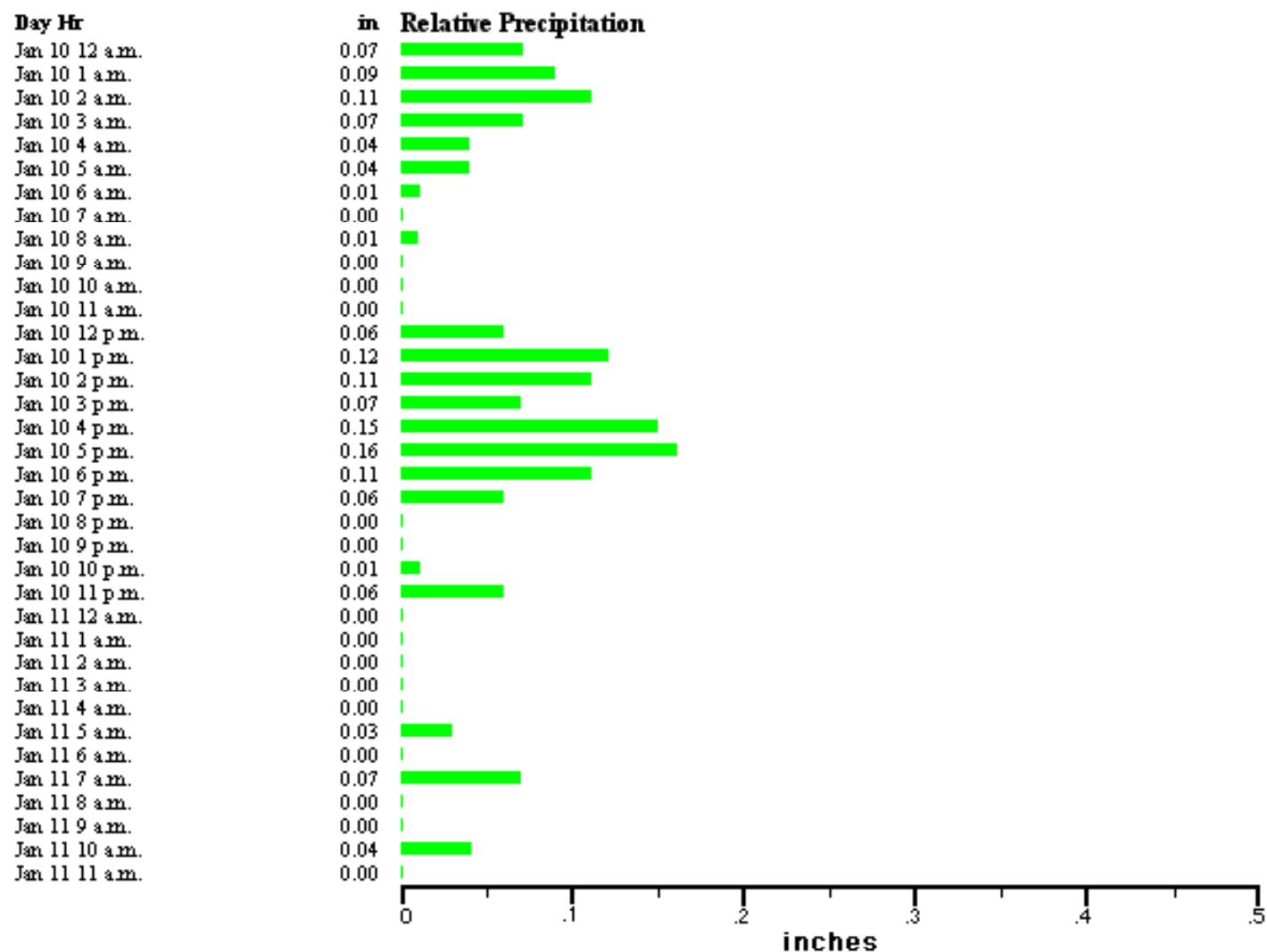
Wind Chill is the same as air temperature for air temperature > 50 °F or wind < 4 mph.



Barometric Pressure on the hour indicated



Precipitation during preceding hour





Daily Records
from the
OSU Hatfield Marine Science Center
Newport, Oregon
(44 37.3 N., 124 2.8 W.)

Date	Peak Wind	Daily Precip	Low Temperature	High Temperature	Low Pressure	High Pressure
January 1, 2006	39 mph / SSE	0.58"	47.0°F	54.0°F	29.29"	29.57"
January 2, 2006	13 mph / SE	0.50"	42.5°F	50.7°F	29.55"	29.89"
January 3, 2006	30 mph / SSW	0.32"	42.5°F	49.8°F	29.81"	30.27"
January 4, 2006	24 mph / SE	0.00"	45.4°F	58.8°F	30.16"	30.34"
January 5, 2006	38 mph / SSE	0.10"	55.5°F	62.3°F	30.12"	30.30"
January 6, 2006	35 mph / S	2.20"	51.3°F	58.7°F	29.91"	30.17"
January 7, 2006	35 mph / SW	0.72"	44.6°F	52.5°F	29.87"	30.23"
January 8, 2006	24 mph / WSW	0.32"	46.5°F	50.6°F	30.22"	30.40"
January 9, 2006	49 mph / S	1.31"	48.4°F	53.9°F	29.85"	30.28"
January 10, 2006	51 mph / SSE	1.28"	50.9°F	54.5°F	29.59"	29.93"

Total
7.33"

Lowest / Highest Readings this Month

January	51 mph / SSE Jan 10	2.20" Jan 6	42.5 °F Jan 2	62.3 °F Jan 5	29.29" Jan 1	30.40" Jan 8
---------	------------------------	----------------	------------------	------------------	-----------------	-----------------

[[Other Month's Records](#) | [Current Conditions](#) | [Hourly Graphs](#) | [Archives](#) | [Summaries](#) | [Instrumentation](#)]

[[Newport Forecast](#) | [Other Weather Links](#) | [HMSC](#) | [OSU](#)]

Archived Data is Available every 15 mins.

```
date,timePST,at,press,humidity,dewpt,wsp,gust,wchill,precip,adjprecip,ppfactor,relcum,interval,source
20060301,"0000",44.7,29.995,82,39.5,10,"SE",18,33.0,0.00,0.00,1.20,2.80,15,"SNI"
20060301,"0015",44.7,29.994,82,39.5,14,"SE",17,27.2,0.00,0.00,1.20,2.80,15,"SNI"
20060301,"0030",44.8,29.990,81,39.3,11,"ESE",16,33.1,0.00,0.00,1.20,2.80,15,"SNI"
20060301,"0045",45.0,29.988,81,39.5,7,"SE",12,36.3,0.00,0.00,1.20,2.80,15,"SNI"
20060301,"0100",45.0,29.988,80,39.2,7,"SE",13,37.2,0.00,0.00,1.20,2.80,15,"SNI"
20060301,"0115",45.0,29.995,80,39.2,11,"ESE",13,33.4,0.00,0.00,1.20,2.80,15,"SNI"
20060301,"0130",45.2,29.996,80,39.4,8,"ESE",12,33.6,0.00,0.00,1.20,2.80,15,"SNI"
20060301,"0145",45.3,29.991,79,39.1,14,"SE",19,29.1,0.00,0.00,1.20,2.80,15,"SNI"
20060301,"0200",45.3,29.995,78,39.1,11,"ESE",15,37.6,0.00,0.00,1.20,2.80,15,"SNI"
20060301,"0215",45.5,29.992,78,39.0,10,"ESE",12,34.0,0.00,0.00,1.20,2.80,15,"SNI"
20060301,"0230",45.4,29.982,78,38.9,9,"E",13,36.8,0.00,0.00,1.20,2.80,15,"SNI"
20060301,"0245",45.3,29.977,78,38.8,9,"ESE",15,36.7,0.00,0.00,1.20,2.80,15,"SNI"
20060301,"0300",44.8,29.977,78,38.3,9,"ESE",14,33.3,0.00,0.00,1.20,2.80,15,"SNI"
20060301,"0315",45.0,29.978,77,38.1,6,"SE",15,36.3,0.00,0.00,1.20,2.80,15,"SNI"
20060301,"0330",45.3,29.970,75,37.8,11,"SE",14,34.0,0.00,0.00,1.20,2.80,15,"SNI"
20060301,"0345",45.6,29.962,74,37.7,9,"ESE",18,32.9,0.00,0.00,1.20,2.80,15,"SNI"
20060301,"0400",45.8,29.960,73,37.5,11,"ESE",18,34.4,0.00,0.00,1.20,2.80,15,"SNI"
20060301,"0415",45.9,29.963,72,37.3,15,"SE",17,28.4,0.00,0.00,1.20,2.80,15,"SNI"
20060301,"0430",46.1,29.956,71,37.1,15,"SE",19,30.2,0.00,0.00,1.20,2.80,15,"SNI"
20060301,"0445",46.3,29.949,70,36.9,10,"ESE",19,37.8,0.00,0.00,1.20,2.80,15,"SNI"
20060301,"0500",46.5,29.947,69,37.1,17,"ESE",22,24.9,0.00,0.00,1.20,2.80,15,"SNI"
```

Guin Library (Wind, temperature, pressure, precipitation,)

- 1996
[Oct](#) | [Nov](#) | [Dec](#)
- 1997
[Jan](#) | [Feb](#) | [Mar](#) | [Apr](#) | [May](#) | [June](#) | [July](#) | [Aug](#) | [Sep](#) | [Oct](#) | [Nov](#) | [Dec](#)
- 1998
[Jan](#) | [Feb](#) | [Mar](#) | [Apr](#) | [May](#) | [June](#) | [July](#) | [Aug](#) | [Sep](#) | [Oct](#) | [Nov](#) | [Dec](#) | [Year](#)
- 1999
[Jan](#) | [Feb](#) | [Mar](#) | [Apr](#) | [May](#) | [June](#) | [July](#) | [Aug](#) | [Sep](#) | [Oct](#) | [Nov](#) | [Dec](#) | [Year](#)
- 2000
[Jan](#) | [Feb](#) | [Mar](#) | [Apr](#) | [May](#) | [June](#) | [July](#) | [Aug](#) | [Sep](#) | [Oct](#) | [Nov](#) | [Dec](#) | [Year](#)
- 2001
[Jan](#) | [Feb](#) | [Mar](#) | [Apr](#) | [May](#) | [June](#) | [July](#) | [Aug](#) | [Sep](#) | [Oct](#) | [Nov](#) | [Dec](#) | [Year](#)
- 2002
[Jan](#) | [Feb](#) | [Mar](#) | [Apr](#) | [May](#) | [June](#) | [July](#) | [Aug](#) | [Sep](#) | [Oct](#) | [Nov](#) | [Dec](#) | [Year](#)
- 2003
[Jan](#) | [Feb](#) | [Mar](#) | [Apr](#) | [May](#) | [June](#) | [July](#) | [Aug](#) | [Sep](#) | [Oct](#) | [Nov](#) | [Dec](#) | [Year](#)
- 2004
[Jan](#) | [Feb](#) | [Mar](#) | [Apr](#) | [May](#) | [June](#) | [July](#) | [Aug](#) | [Sep](#) | [Oct](#) | [Nov](#) | [Dec](#) | [Year](#)
- 2005
[Jan](#) | [Feb](#) | [Mar](#) | [Apr](#) | [May](#) | [June](#) | [July](#) | [Aug](#) | [Sep](#) | [Oct](#) | [Nov](#) | [Dec](#) | [Year](#)
- 2006
[Jan](#) | [Feb](#) | [Mar](#) | [Apr](#) | [May](#) | [June](#) | [July](#) | [Aug](#) | [Sep](#) | [Oct](#) | [Nov](#) | [Dec](#) | [Year](#)

NWS Weighing Rain Gage (More accurate precipitation totals)

[1995](#) [1996](#) [1997](#) [1998](#) [1999](#)
[2000](#) [2001](#) [2002](#) [2003](#) [2004](#) [2005](#) [2006](#)

HMSC (Yaquina Bay) Solar Radiation (watts/meter²)

- 2004
[Dec](#)
- 2005
[Jan](#) | [Feb](#) | [Mar](#) | [Apr](#) | [May](#) | [June](#) | [July](#) | [Aug](#) | [Sep](#) | [Oct](#) | [Nov](#) | [Dec](#)
- 2006
[Jan](#) | [Feb](#) | [Mar](#) | [Apr](#) | [May](#) | [June](#) | [July](#) | [Aug](#) | [Sep](#) | [Oct](#) | [Nov](#) | [Dec](#)

Date of last Update: Monthly

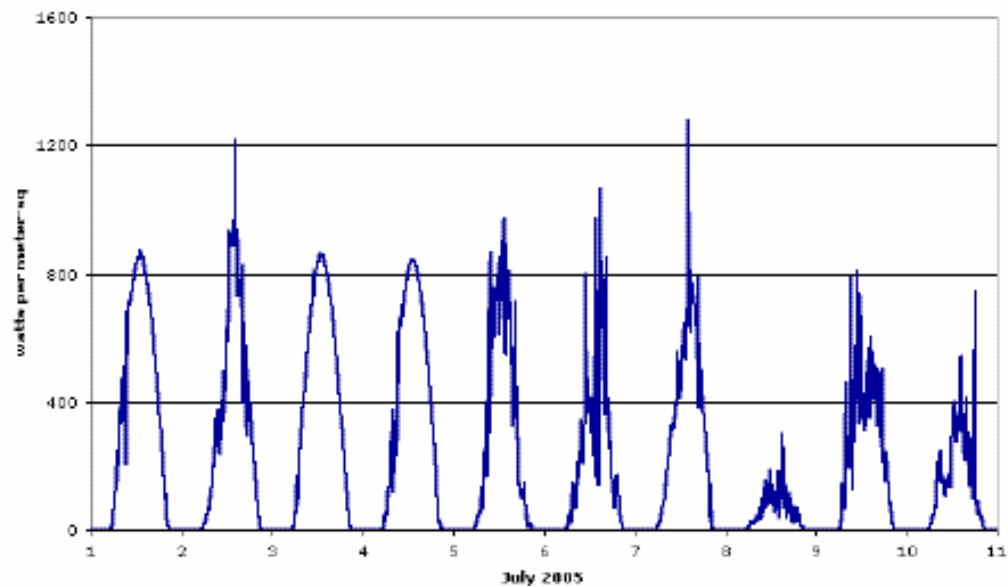
Document URL: <http://www.hmsc.oregonstate.edu/weather/summaries/index.html>

Document Coordinator: hmscweather@oregonstate.edu

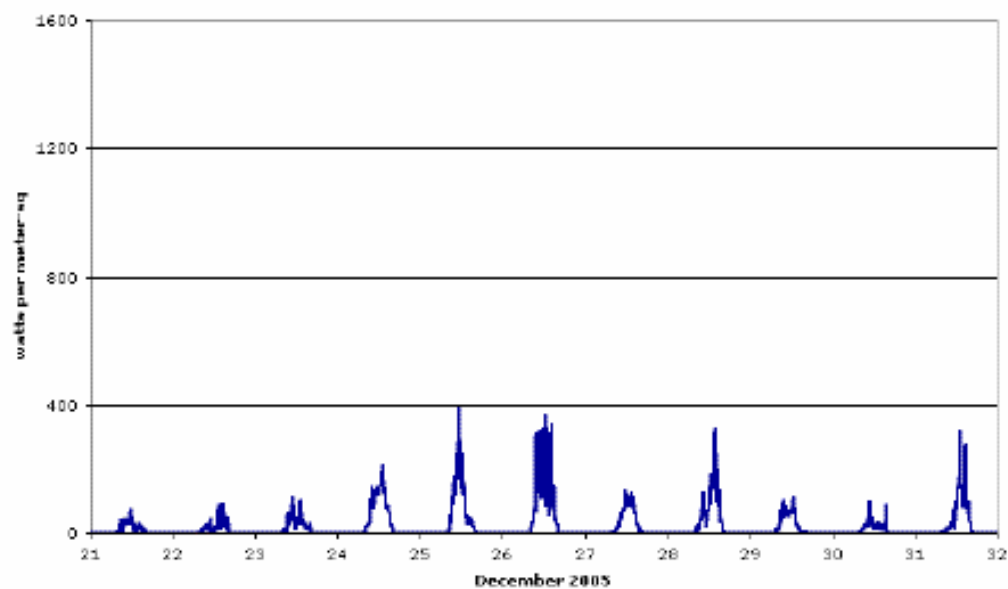
A pyranometer measures solar radiation



Solar Radiation at OSU Hatfield Marine Science Center
Yaquina Bay, Newport, Oregon



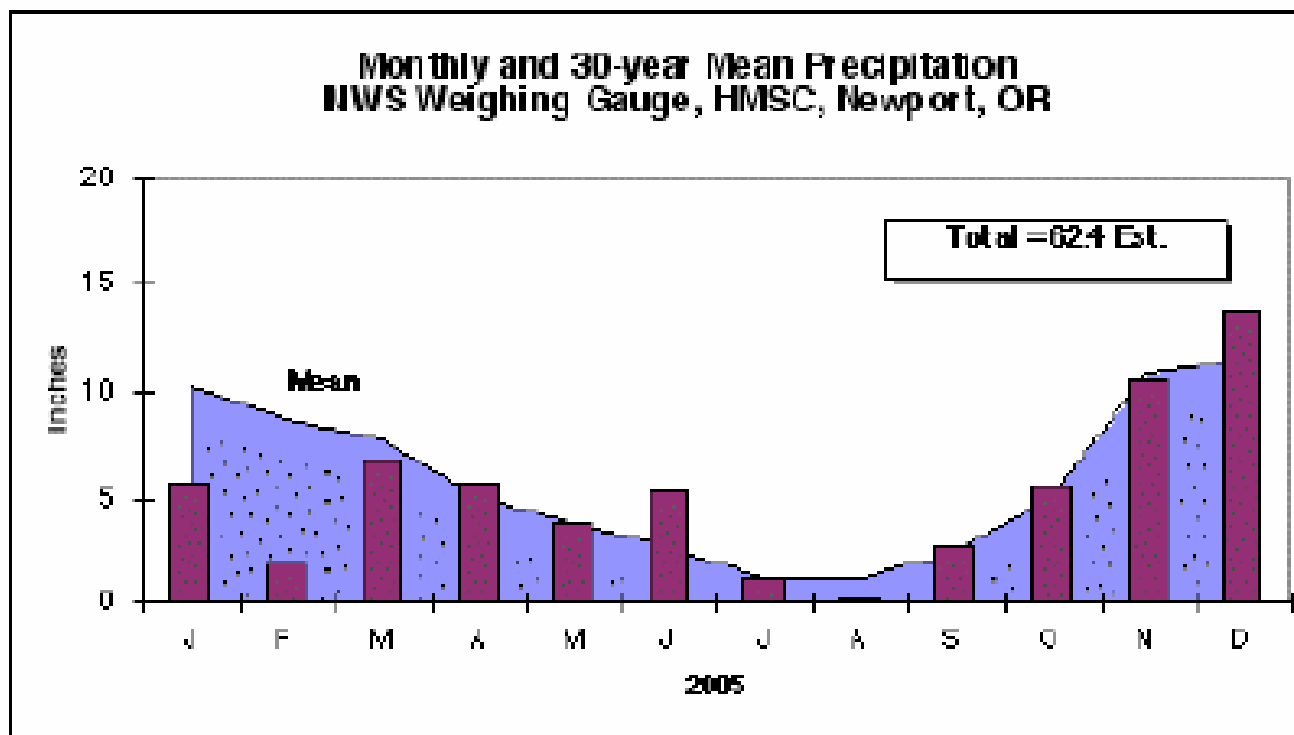
Solar Radiation at OSU Hatfield Marine Science Center
Yaquina Bay, Newport, Oregon



National Weather Service Weighing Rain Gauge



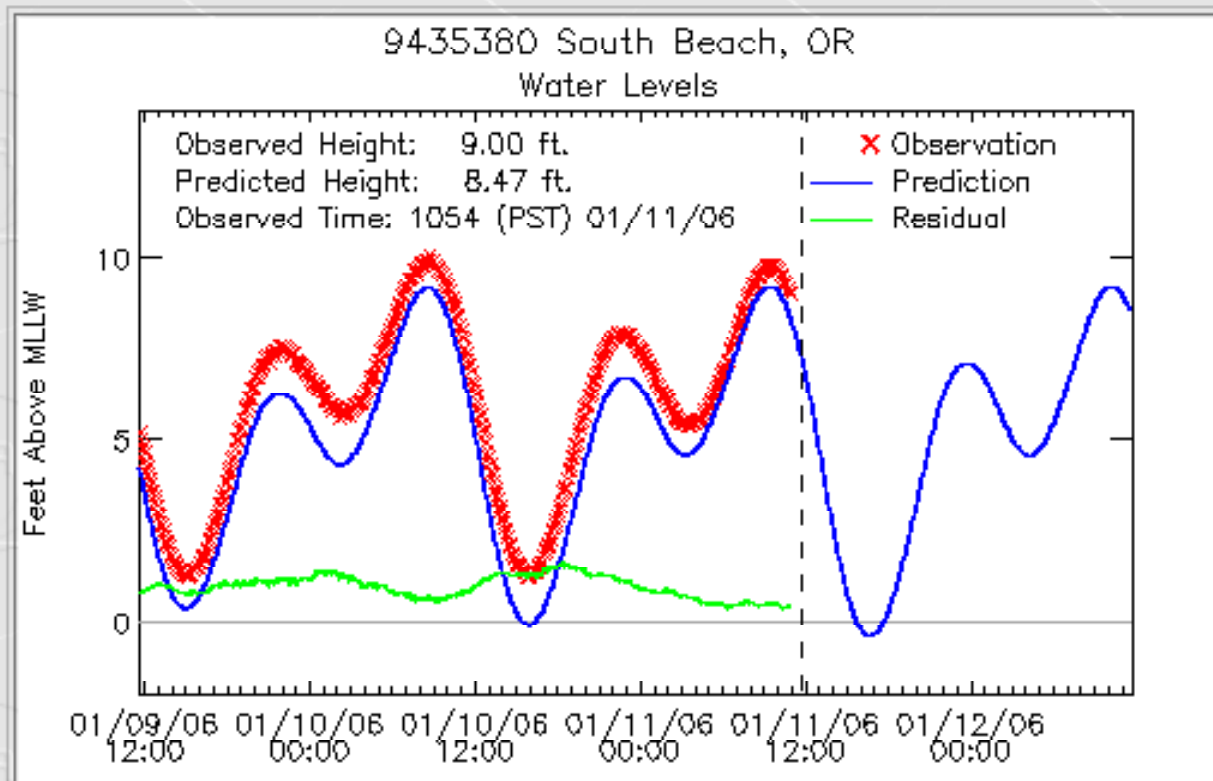
Yearly Precipitation Graph





NOAA Tide Shack

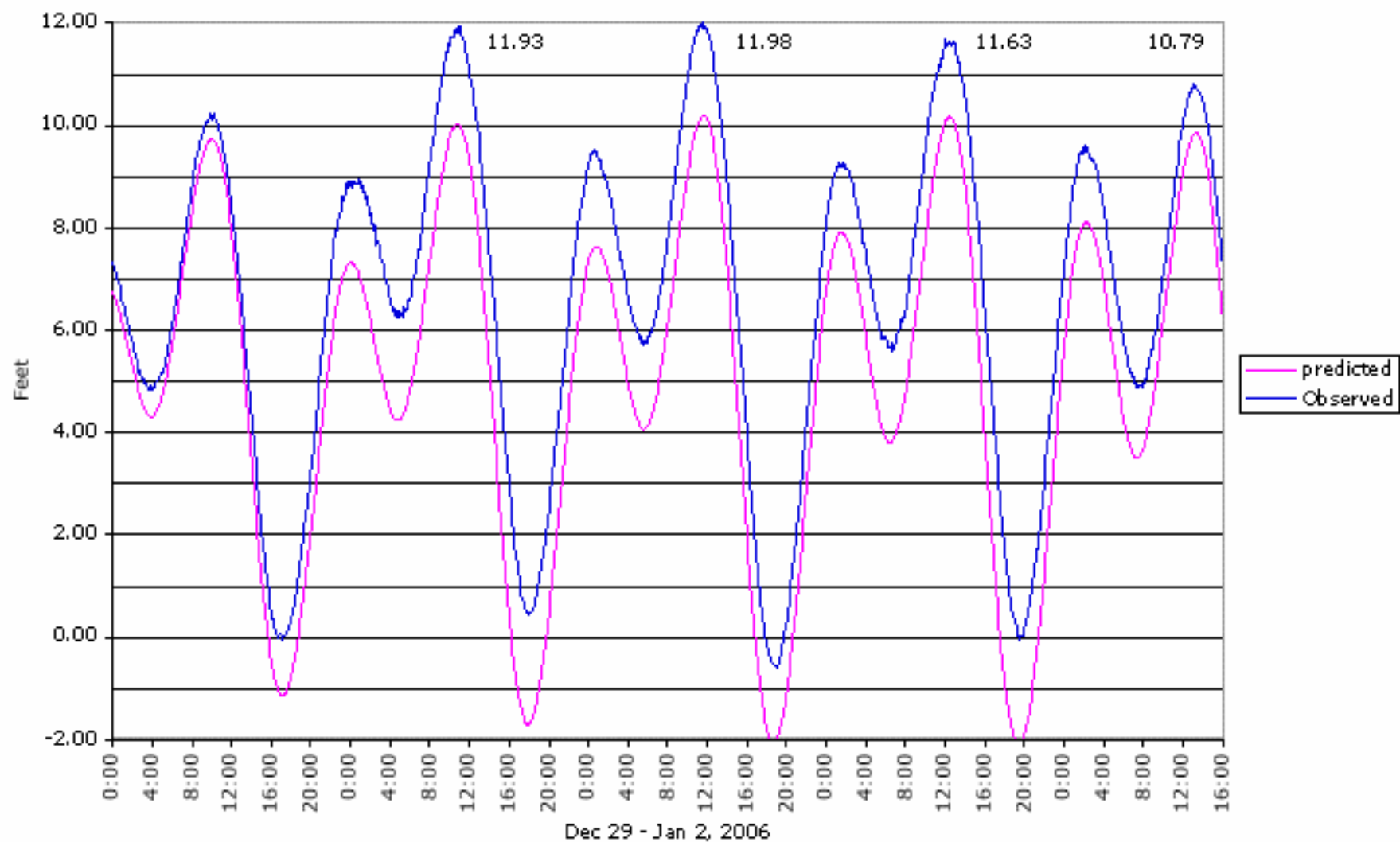
9435380 South Beach, OR



A very high tide



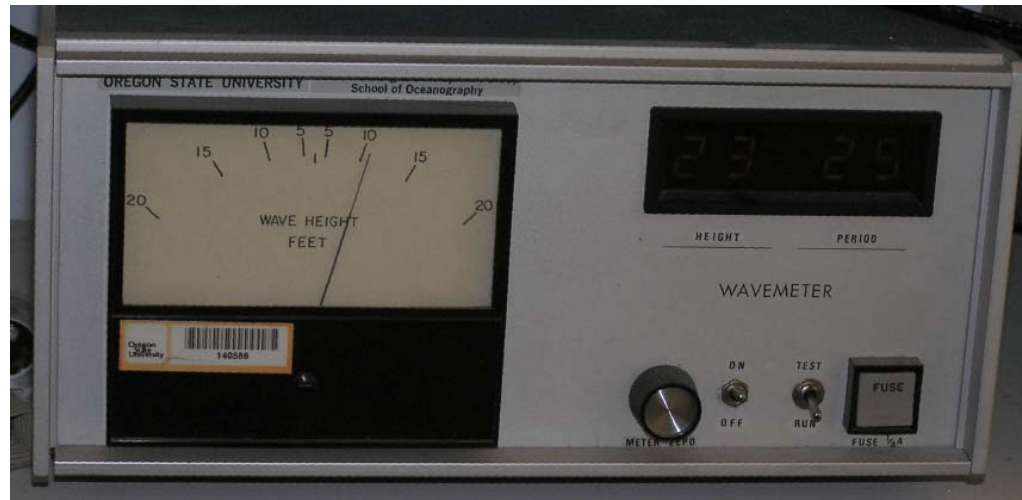
Water Levels South Beach Tide Gauge
Hatfield Marine Science Center, Yaquina Bay, Oregon



Waves

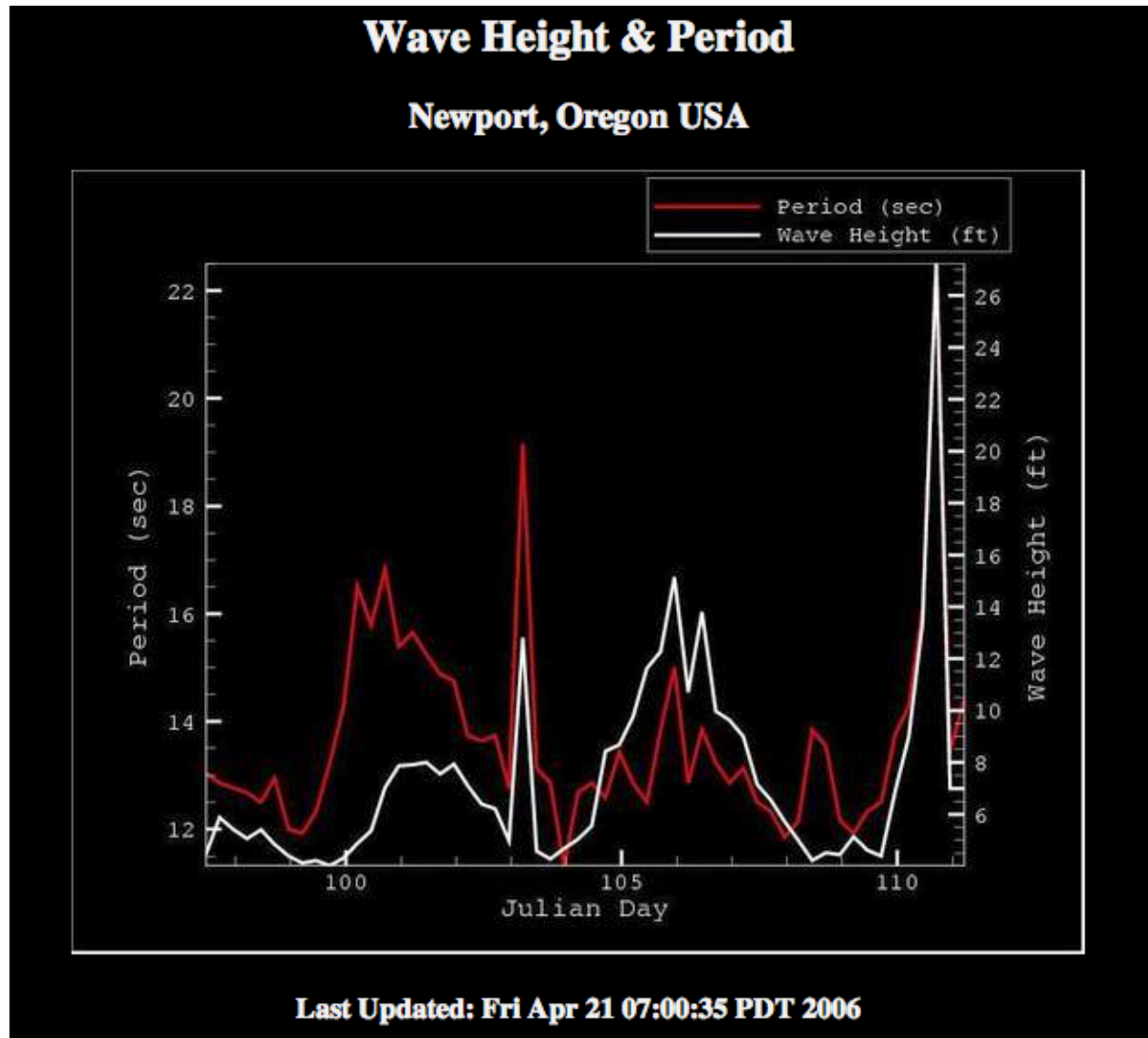


Seismic Wavemeter





Surf Report - Seismometer



Ship Support Anemometer

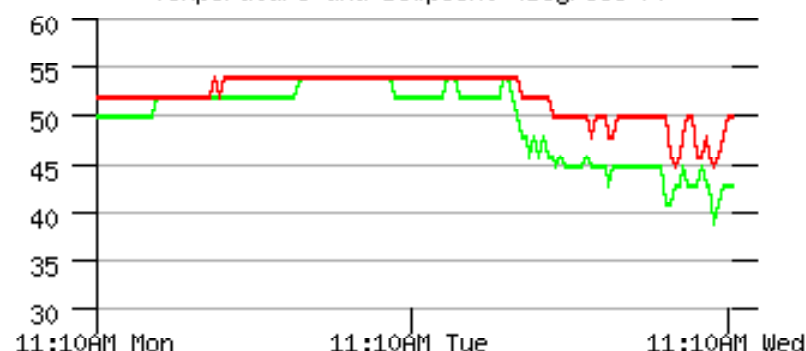
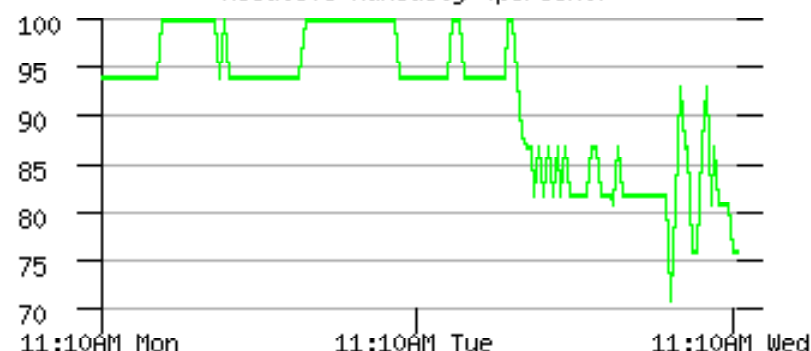


Yaquina Head Camera



Weather Station at Newport Airport (KONP)



[Show 7 Days](#)[Show Raw Observations](#)Newport, Newport Municipal Airport - NWS/FAA
Temperature and Dewpoint (Degrees F)Newport, Newport Municipal Airport - NWS/FAA
Relative Humidity (percent)

Weather Conditions for:

Newport, Newport Municipal Airport, OR (KONP)

Elev: 161 ft; Latitude: 44.58028; Longitude: -124.05806

Current time: Wed, 11 Jan 11:51 am (PST)

Most Recent Observation: Wed, 11 Jan 11:30 am (PST)

Time	Temp.	Dew	Relative	Wind	Wind	Visibility	WX	Clouds	Altimeter	Station	Precip	Quality
(PST)	(f)	(f)	(%)	Direction	Speed	(miles)			Setting	Pressure	1 hour	Control
11 Jan 11:30 am	50	43	76	W	14G23	7.00	SCT030 BKN035 BKN041	30.03	29.865			OK
11 Jan 11:10 am	50	43	76	W	15G25	7.00	SCT027 BKN034 BKN041	30.03	29.865			OK
11 Jan 10:50 am	48	43	81	W	14G18	7.00	SCT034 SCT041 SCT048	30.02	29.855	0.01		OK
11 Jan 10:30 am	46	41	81	W	9	7.00	SCT034 SCT044 SCT070	30.02	29.855	0.01		OK
11 Jan 10:10 am	45	39	81	W	13G25	3.00	-RA SCT018 BKN033 OVC041	30.01	29.845	0.01		OK
11 Jan 9:50 am	46	43	87	W	14G28	7.00	SCT020 BKN027 OVC034	30.00	29.835	0.01		OK
11 Jan 9:30 am	48	43	81	WSW	20G32	5.00	-RA SCT026 BKN032 OVC049	29.97	29.805	0.01		OK
11 Jan 9:10 am	46	45	93	WSW	15	5.00	-RA SCT024 BKN047 OVC100	29.96	29.795			OK
11 Jan 8:50 am	46	43	87	WSW	15G26	5.00	HZ SCT038 BKN060 OVC110	29.96	29.795			OK
11 Jan 8:30 am	50	43	76	WSW	22G26	5.00	-RA SCT038 BKN047 BKN055	29.95	29.785			OK
11 Jan 8:10 am	50	43	76	WSW	18G26	5.00	HZ SCT024 SCT037 BKN070	29.94	29.775			OK
11 Jan 7:50 am	48	45	87	WSW	16G23	7.00	SCT032 SCT055 BKN075	29.93	29.765	0.02		OK
11 Jan 7:30 am	46	43	87	WSW	13	7.00	SCT050 SCT075 BKN090	29.93	29.765	0.02		OK
11 Jan 7:10 am	45	43	93	SW	18G23	7.00	BKN027 BKN060 OVC100	29.93	29.765	0.02		OK
11 Jan 6:50 am	46	41	81	W	18G31	5.00	+RA SCT024 BKN033 OVC070	29.94	29.775	0.02		OK
11 Jan 6:30 am	50	41	71	WSW	18G25	10.00	SCT028 BKN065 OVC110	29.92	29.755			OK

Address: http://www.ndbc.noaa.gov/station_page.php?station=46050

Weather ODFW Web Cams Support OSU Mail Web Google



National Oceanic and Atmospheric Administration's National Data Buoy Center

Center of Excellence in Marine Technology

Home

Site Map

News

Organization

Search

Station ID Search

Station List

Observations

Recent
Historical
Obs Search
NOAA Obs
APEX
CSP
DART
MMS ADCP
TAO

Station Status

Maintenance
Platform Status

Ship Observations

VOS Program
Ship Obs Report

About NDBC

Dial-A-Buoy

Publications

Mariners Weather
Log

Science Education

Contact Us

FAQ
Links

New! - Tropical Atmosphere Ocean (TAO) Data Now Available**Station 46050 - STONEWALL BANKS - 20NM West of Newport, OR**

Owned and maintained by National Data Buoy Center
3-meter discus buoy
VEEP payload
44.62 N 124.53 W (44°37'16"N 124°31'42" W)

Site elevation: sea level
Air temp height: 4 m above site elevation
Anemometer height: 5 m above site elevation
Barometer elevation: sea level
Sea temp depth: 0.6 m below site elevation
Water depth: 130.1 m
Watch circle radius: 130 yards

"Potential Explosion Hazard Exists for this Buoy"[Latest NWS Marine Forecast](#)[Important Notice to Mariners](#)[Search And Rescue \(SAR\) Data](#)[Meteorological Observations from Nearby Stations and Ships](#)[Latest Satellite Wind Map for this Area](#)

Conditions at 46050 as of
(10:50 am PST)
1850 GMT on 01/11/2006:

Unit of Measure: Time Zone:



Back



Forward



Stop



Refresh



Home



AutoFill



Print



Mail

Address: http://www.ndbc.noaa.gov/show_plot.php?station=46050&meas=sght&uom=E

[Weather](#) [ODFW](#) [Web Cams](#) [Support](#) [OSU Mail Web](#) [Google](#)



Favorites

History

Search

Scrapbook

Page Holder

Significant Wave Height at 46050





South Jetty CMAN Weather Station

NOAA



Favorites

History

Search

Scrapbook

PageHolder



National Oceanic and Atmospheric Administration's National Data Buoy Center

Center of Excellence in Marine Technology

Home

Site Map

News

Organization

Search

NDBC Web Site



Station ID Search

Station List

Observations

[Recent](#)
[Historical](#)
[Obs Search](#)
[NOAA Obs](#)
[APEX](#)
[CSP](#)
[DART](#)
[MMS ADCP](#)
[TAO](#)

Station Status

[Maintenance](#)
[Platform Status](#)

Ship Observations

[VOS Program](#)
[Ship Obs Report](#)

About NDBC

Dial-A-Buoy

Publications

[Mariners' Weather Log](#)

Science Education

Contact Us

[FAQ](#)
[Links](#)

New! - Tropical Atmosphere Ocean (TAO) Data Now Available

Station NWPO3 - Newport, OR

Owned and maintained by National Data Buoy Center
 C-MAN station
 DART payload
 44.61 N 124.07 W (44°36'48" N 124°04'00" W)

Site elevation: 9.1 m above mean sea level
 Air temp height: 6.4 m above site elevation
 Anemometer height: 9.4 m above site elevation
 Barometer elevation: 11.0 m above mean sea level

[Latest NWS Marine Forecast](#)

[Important Notice to Mariners](#)

[Search And Rescue \(SAR\) Data](#)

[Meteorological Observations from Nearby Stations and Ships](#)

[Latest Satellite Wind Map for this Area](#)



Conditions at NWPO3 as of
 (11:00 am PST)
 1900 GMT on 01/11/2006:

Unit of Measure:

English



Time Zone:

Station Local Time



Select

Weather Station Requirements

- Quality instruments with little maintenance
- Sensors in standard locations
- Web access (update at least every minute)
- Archival of data for daily availability
- Monthly/yearly Graphs
- Web camera?

Problems with current system

- Instruments at non-standard heights
- Home quality vs. research quality
- Instruments wear out after 2-3 years
- Sensor locations could be improved

Proposed sites

- Open location to wind
- Need electrical power
- Telephone wires or internet
- Hide from public to prevent vandalism
- Wireless communications may be possible

