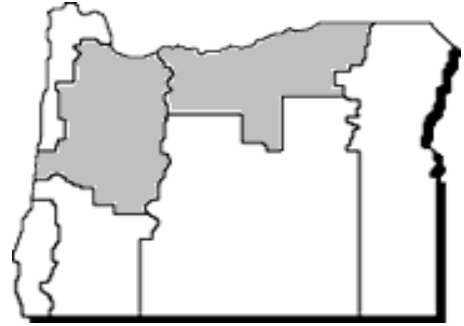


Commodity Data Sheet

Sweet Corn for Processing



Commodity number-crop year: 7340-05*

Extension Economic Information Office
 Oregon State University
 219 Ballard Extension Hall
 Corvallis, OR 97331-3601 (541) 737-1436

November 2006

Item and area	Unit	2001	2002	2003	2004	2005
Total production						
Oregon	Tons	226,870	263,580	271,680	259,910	233,810
Minnesota	Tons	794,720	884,630	938,800	894,590	977,090
New York	Tons	160,600	89,040	108,780	110,200	116,160
Washington	Tons	853,560	899,200	900,540	826,140	792,160
Wisconsin	Tons	657,640	596,050	681,420	511,220	680,230
United States						
All	Tons	3,147,530	3,067,690	3,266,050	2,968,180	3,174,120
Canned	Tons	1,517,570	1,428,000	1,556,310	1,458,270	1,707,460
Frozen	Tons	1,629,960	1,639,690	1,709,740	1,509,910	1,466,660
Farm price						
Oregon	Dollars/ton	80.10	78.30	81.00	80.70	79.20
Minnesota	Dollars/ton	68.80	64.60	64.50	72.50	71.60
New York	Dollars/ton	73.70	69.70	78.40	77.70	80.40
Washington	Dollars/ton	70.40	72.40	76.90	70.10	69.00
Wisconsin	Dollars/ton	65.80	56.20	62.30	67.20	61.70
United States						
All	Dollars/ton	73.00	68.00	70.40	72.10	68.40
Canned	Dollars/ton	73.90	65.60	68.60	71.20	65.50
Frozen	Dollars/ton	72.10	70.20	72.00	73.00	71.80
Value of production						
Oregon	1,000 dollars	18,167	20,629	21,999	20,974	18,523
Minnesota	1,000 dollars	54,714	57,159	60,563	64,887	69,945
New York	1,000 dollars	11,829	6,206	8,523	8,563	9,339
Washington	1,000 dollars	60,113	65,115	69,256	57,890	54,675
Wisconsin	1,000 dollars	43,287	33,520	42,471	34,358	41,973
United States						
All	1,000 dollars	229,678	208,703	229,788	213,993	217,096
Canned	1,000 dollars	112,150	93,644	106,697	103,832	111,859
Frozen	1,000 dollars	117,528	115,059	123,091	110,161	105,237

*Shaded areas of map represent the major areas of production for this commodity.

Source: USDA/NASS (National Agricultural Statistics Service)

Electronic access to this publication is available at: <http://oregonstate.edu/oain/>. Click the Commodity Data Sheets button.

Sweet corn for processing: Acreage, yield, production and value of sales, by county, Oregon, 2003-2005

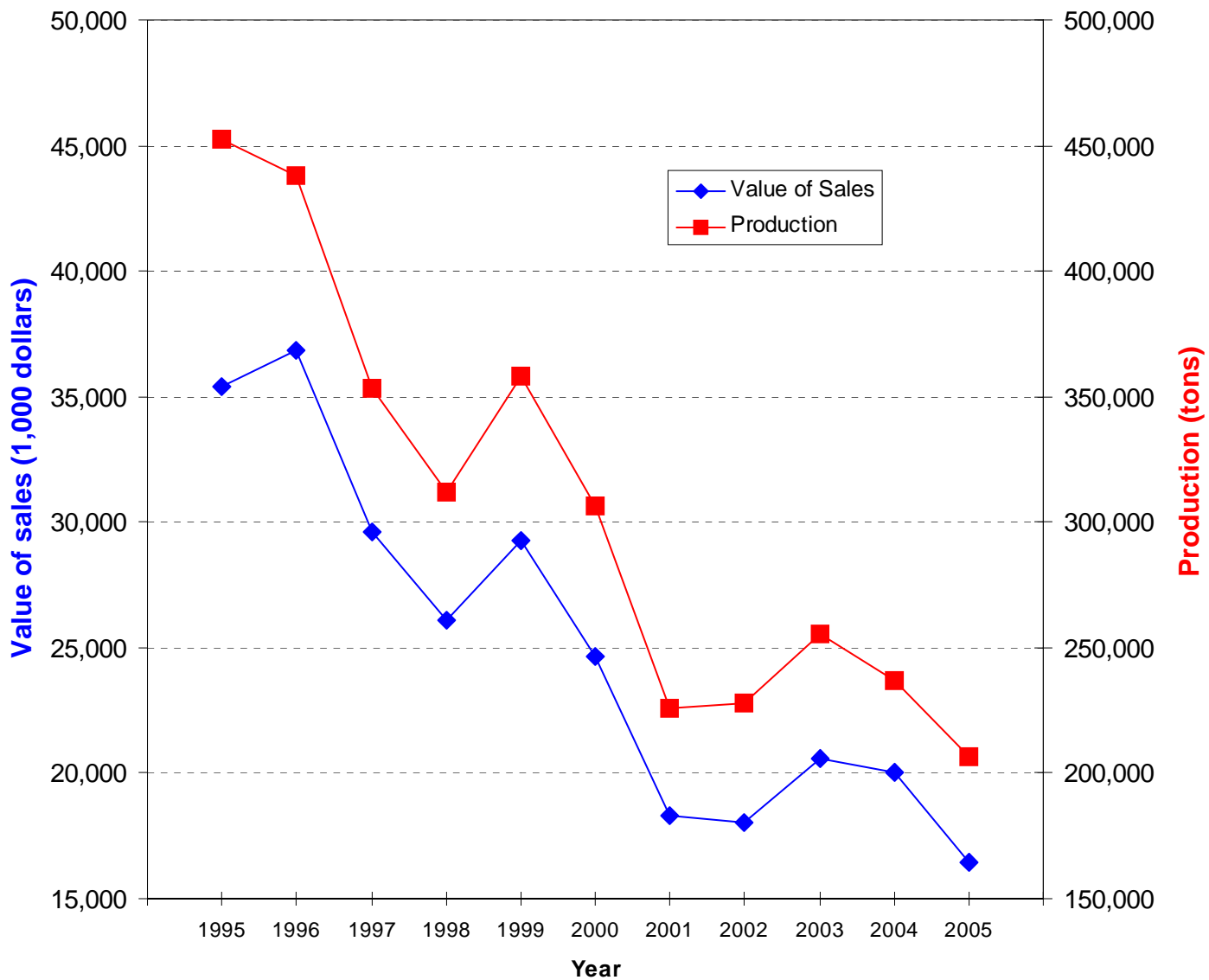
District & county	Acreage harvested			Yield per acre		
	2003r	2004r	2005p	2003r	2004r	2005p
	<i>Acres</i>	<i>Acres</i>	<i>Acres</i>	<i>Tons</i>	<i>Tons</i>	<i>Tons</i>
Washington	2,630	2,480	1,910	9.1	8.0	9.9
Not disclosed	18,490	18,330	14,290	8.9	8.2	10.2
Willamette Valley	21,120	20,810	16,200	8.9	8.2	10.2
Not disclosed	420	190	190	9.0	8.2	8.7
Coastal	420	190	190	9.0	8.2	8.7
Morrow	4,780	-	-	10.1	-	-
Umatilla	-	1,550	-	-	8.8	-
Not disclosed	1,770	5,510	4,300	8.5	9.3	9.3
North Central	6,550	7,060	4,300	9.7	9.2	9.3
State total	28,090	28,060	20,690	9.1	8.4	10.0

District & county	Production			Value of sales ^{1/}		
	2003r	2004r	2005p	2003r	2004r	2005p
	<i>Tons</i>	<i>Tons</i>	<i>Tons</i>	<i>1,000 dollars</i>	<i>1,000 dollars</i>	<i>1,000 dollars</i>
Washington	24,055	19,840	18,939	2,126	1,867	1,559
Not disclosed	163,719	150,468	145,534	13,905	13,595	11,933
Willamette Valley	187,774	170,308	164,473	16,031	15,462	13,492
Not disclosed	3,770	1,551	1,662	259	109	123
Coastal	3,770	1,551	1,662	259	109	123
Morrow	48,500	-	-	3,264	-	-
Umatilla	-	13,640	-	-	1,017	-
Not disclosed	15,126	51,009	40,128	1,026	3,469	2,800
North Central	63,626	64,649	40,128	4,290	4,486	2,800
State total	255,170	236,508	206,263	20,580	20,057	16,415

r - revised, p - preliminary. 1/ Totals may not add due to rounding. A "-" indicates the data may not exist or may not be displayed due to confidentiality rules. The "not disclosed" values are the sum of all values hidden by the dashes and any county not listed. The Extension Economic Information Office uses different methods than USDA/NASS to set these estimates.

Source: Oregon Agricultural Information Network (OAIN), Extension Economic Information Office, Oregon State University

Sweet corn for processing: Production and value of sales, Oregon, 1995-2005



Source: Oregon Agricultural Information Network (OAIN), Extension Economic Information Office, Oregon State University

Sweet corn for processing: Acreage, yield, production, price and value of sales, Oregon, 1940-2005

Year	Acreage harvested <i>Acres</i>	Yield per acre <i>Tons</i>	Production <i>Tons</i>	Price per ton <i>Dollars</i>	Value of sales <i>1,000 dollars</i>
1940	1,500	3.3	5,000	14.00	70
1950	9,100	3.7	33,700	27.80	937
1960	21,500	5.0	106,400	23.90	2,543
1970	29,500	7.1	208,850	27.50	5,743
1980	33,700	8.7	292,500	62.30	18,224
1981	39,900	8.1	323,600	67.00	21,681
1982	45,500	9.0	409,950	70.50	28,902
1983	38,795	8.6	331,750	68.50	22,724
1984	42,000	8.7	365,400	71.10	25,980
1985	38,600	9.2	354,750	69.70	24,725
1986	34,900	9.2	322,450	66.61	21,477
1987	38,891	8.8	343,900	64.20	22,077
1988	38,500	9.2	353,450	71.30	25,200
1989	45,500	8.7	394,950	80.50	31,793
1990	47,200	8.4	396,450	85.51	33,899
1991	47,500	8.4	399,950	84.10	33,636
1992	43,300	9.0	391,450	81.39	31,862
1993	44,800	8.7	387,550	83.29	32,280
1994	47,300	9.1	431,850	82.50	35,628
1995	48,900	9.3	452,330	78.20	35,372
1996	48,300	9.1	438,100	84.10	36,843
1997	41,000	8.6	353,000	83.80	29,580
1998	37,300	8.4	311,920	83.69	26,104
1999	44,000	8.1	358,270	81.69	29,268
2000	35,700	8.6	306,650	80.38	24,647
2001	28,870	7.8	225,863	81.12	18,321
2002	28,250	8.1	227,726	79.09	18,010
2003r	28,090	9.1	255,170	80.65	20,580
2004r	28,060	8.4	236,508	84.80	20,057
2005p	20,690	10.0	206,263	79.58	16,415

r - revised, *p* - preliminary. The Extension Economic Information Office uses different methods than USDA/NASS to set these estimates. Source: Oregon Agricultural Information Network (OAIN), Extension Economic Information Office, Oregon State University