

Dairy Goat Breeds

1. La Mancha

The La Mancha is a new breed of dairy goat. It has excellent dairy temperament and is an all-around sturdy animal that can withstand a great deal of hardship and still produce. The LaMancha face is straight. The ears are the distinctive breed characteristic. The two types of LaMancha ears are the "gopher ear" and the "elf ear." In does, one type of ear has no advantage over the other. Any color or combination of colors is acceptable with no preferences. The hair is short, fine, and glossy.

2. Alpine

The Alpine Dairy Goat is also referred to as the French Alpine. Registration papers for this dairy goat use both designations. The Alpine dairy goat is medium to large, alertly graceful, and the only breed with upright ears that offer all colors and color combinations, giving them distinction and individuality. These are hardy, adaptable animals that thrive in any climate. The hair is medium to short. The face is straight.

3. Saanen

The Saanen dairy goat originated in Switzerland. They are medium-to-large, with rugged bone and plenty of vigor. Does should be feminine, however, and not coarse. Saanens are white or light cream in color, with white preferred. The hair should be short and fine, although a fringe over the spine and thighs is often present. Ears should be erect and alertly carried, preferably pointing forward. The face should be straight or dished.

4. Toggenburg

The Toggenburg is a Swiss breed. The breed is of medium size, sturdy, vigorous, and alert in appearance. The hair is short to medium in length, soft, fine and lying flat. Color is solid, varying from light fawn to dark chocolate with no preference for any shade. The ears are erect and carried forward. Facial lines may be dished or straight.

5. Nubian

The Nubian is a relatively large, proud, and graceful dairy goat of Oriental origin. It's known for high quality, high butterfat milk production. The head is the distinctive breed characteristic. The facial profile between the eyes and the muzzle should be convex. The ears are long, wide, and pendulous. The hair is short, fine, and glossy. Any color or colors, solid or patterned, are acceptable.

6. Oberhasli

The Oberhasli is a Swiss dairy goat of medium size, vigorous and alert in appearance. Their color is bay—ranging from light to deep red. Does may be black but bay is preferred. Markings should include: two black stripes down the face from above each eye to a black muzzle; forehead nearly all black; black stripes from the base of each ear coming to a point just back of the poll and continuing along the neck and back as a dorsal stripe to the tail; a black belly and udder; black legs below the knees and hocks; and ears black inside and bay outside. The face is straight.



Extension Service, Oregon State University, O. E. Smith, director. Produced and distributed in furtherance of the Acts of Congress of May 8 and June 30, 1914. Extension work is a cooperative program of Oregon State University, the U.S. Department of Agriculture, and Oregon counties. Extension invites participation in its programs and offers them equally to all people.

1



5



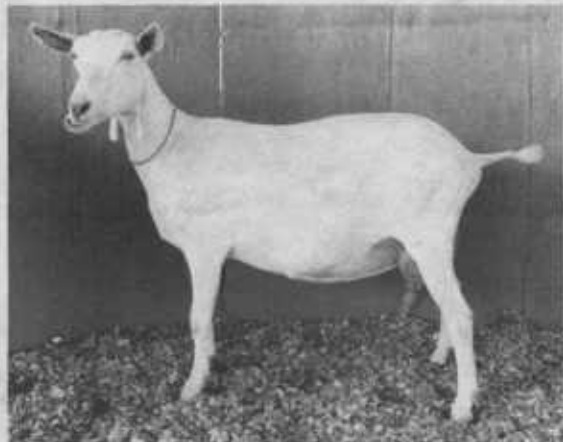
2



6



3



4

