

IMPROVED HARVESTING METHODS

INFORMATION
REVIEWED AND REAFFIRMED EQUIPMENT SURVEY NOTES
1960IMPROVED HANDHOOKS

Handhooks or tongs for handling pulpwood, bolts, or ties were observed in use in northern Minnesota. Applied to the ends of logs or bolts, the hooks furnish a sure grip for two men to lift and handle pulpwood. They are easy to apply and to release. They are safe to use as the operator's feet are clear of the bolt, the hook continues to bite as long as an upward pull is exerted on the handles, and the double claws keep the bolt from turning.

The two types of hooks shown in figures 1 and 2 can be made by a camp blacksmith. The end hook is hinged in a slot in the handle. The over-all length is usually about 18 inches. A somewhat similar hook with an aluminum body and replaceable steel points can be purchased.

Information furnished by
David N. Kee
Superior National Forest
Duluth, Minn.
November 1953



Figure 1. --Hook engaged on the end of a bolt.

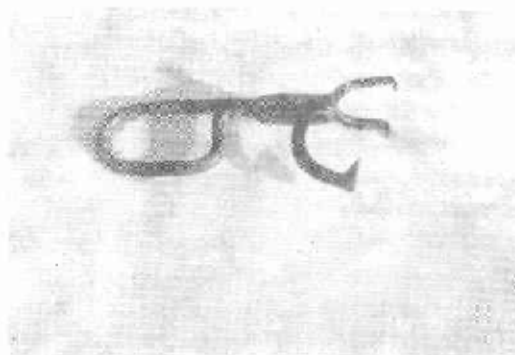


Figure 2. --Another hook of similar design.

Report No. 1637-58

† Maintained at Madison, Wisconsin in cooperation with the University of Wisconsin