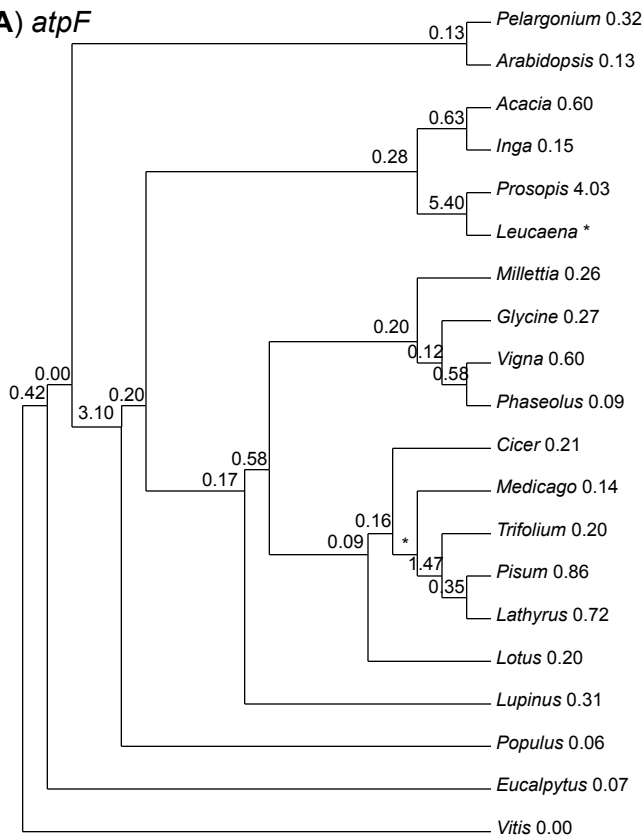
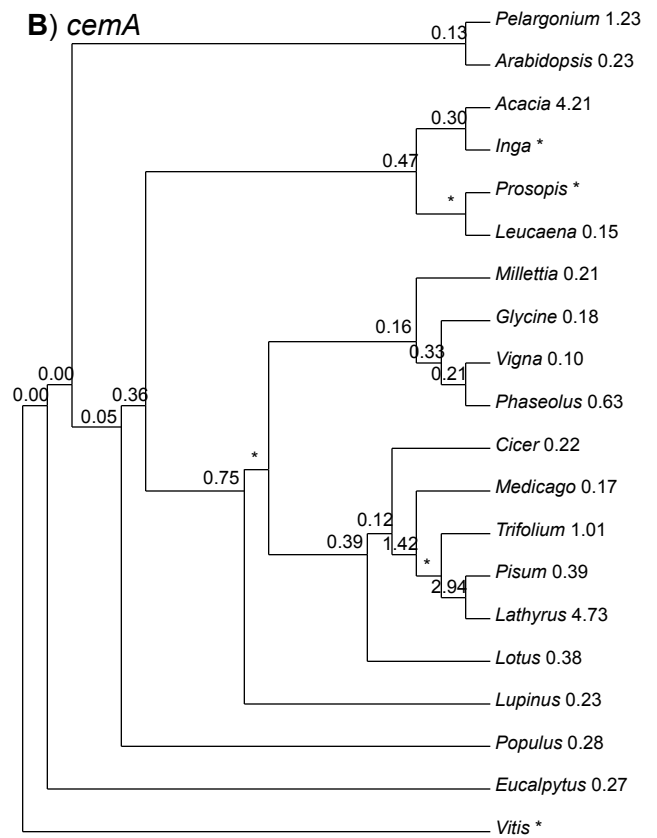
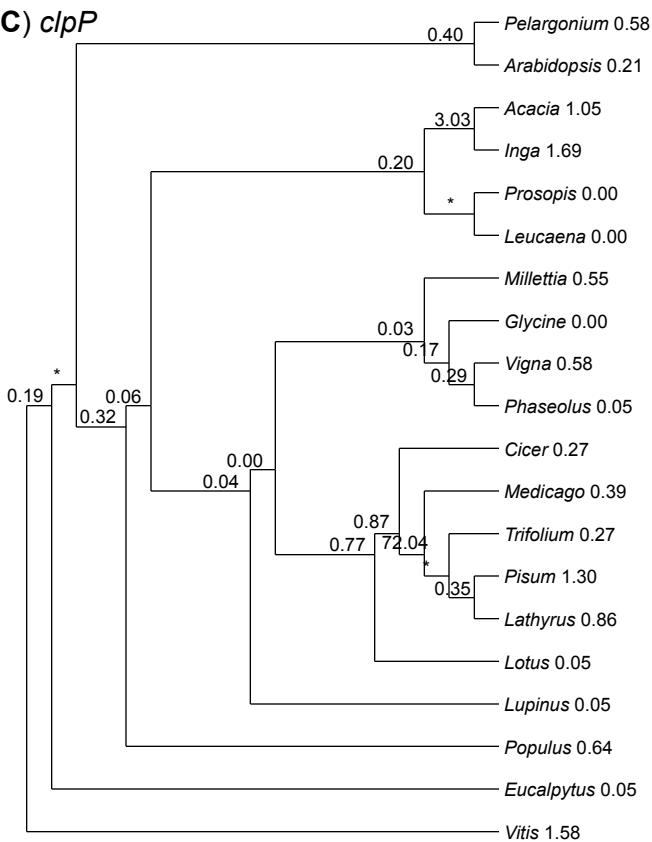
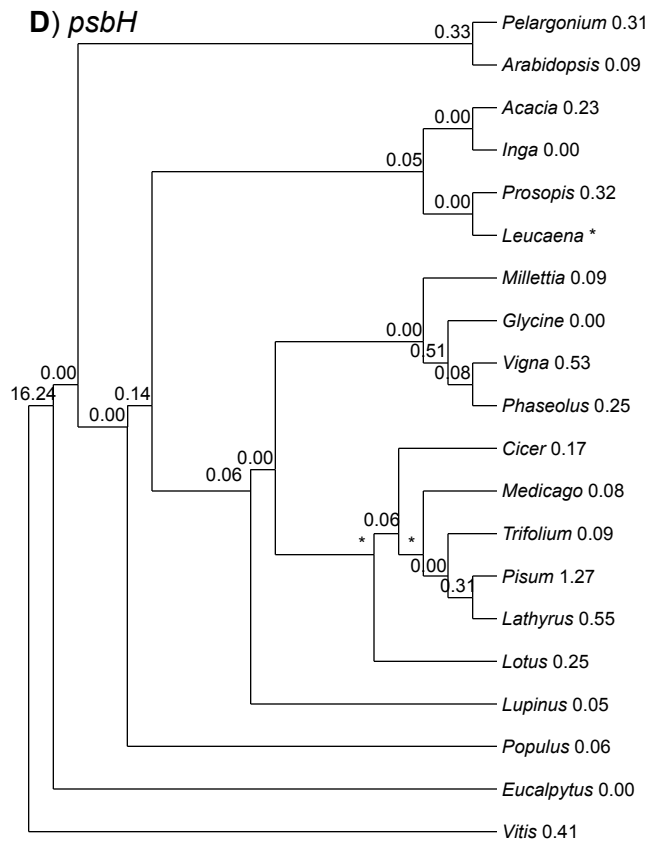


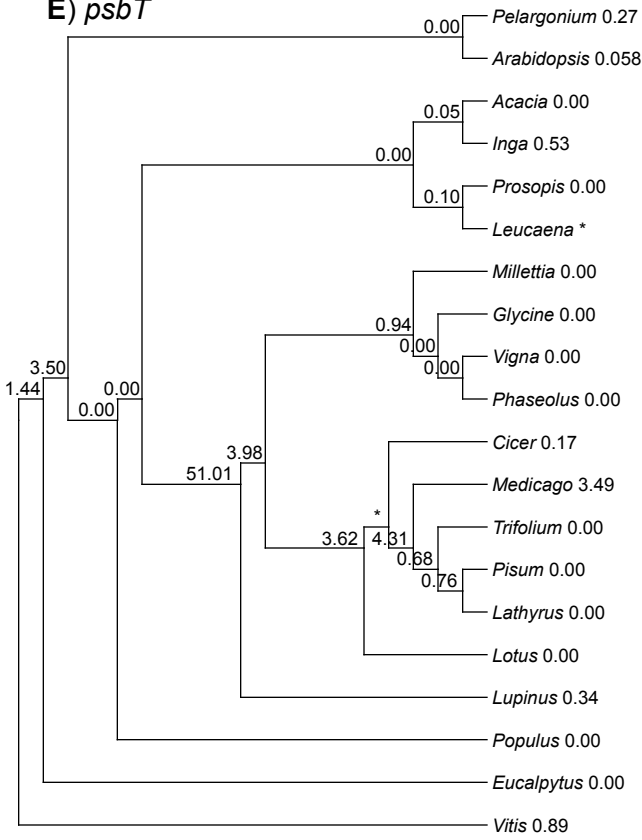
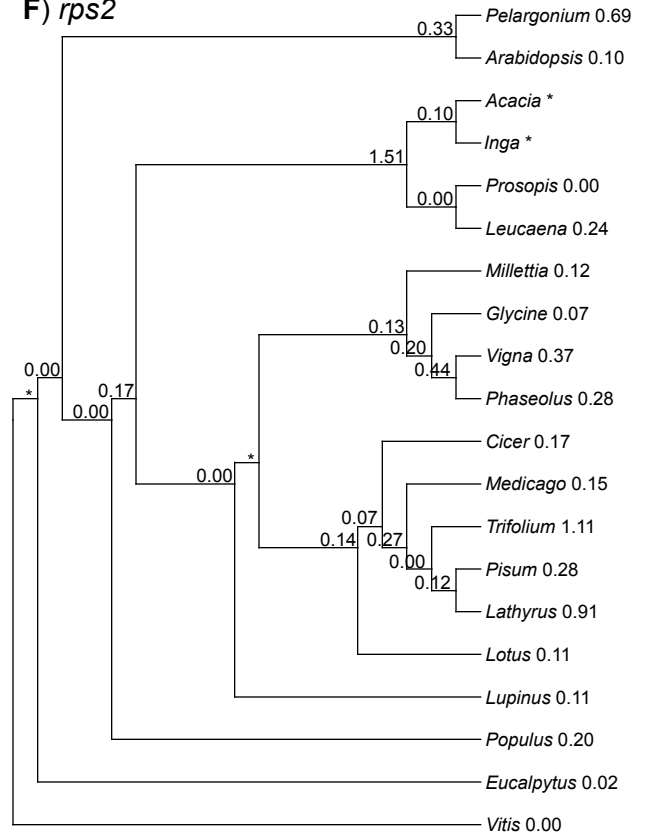
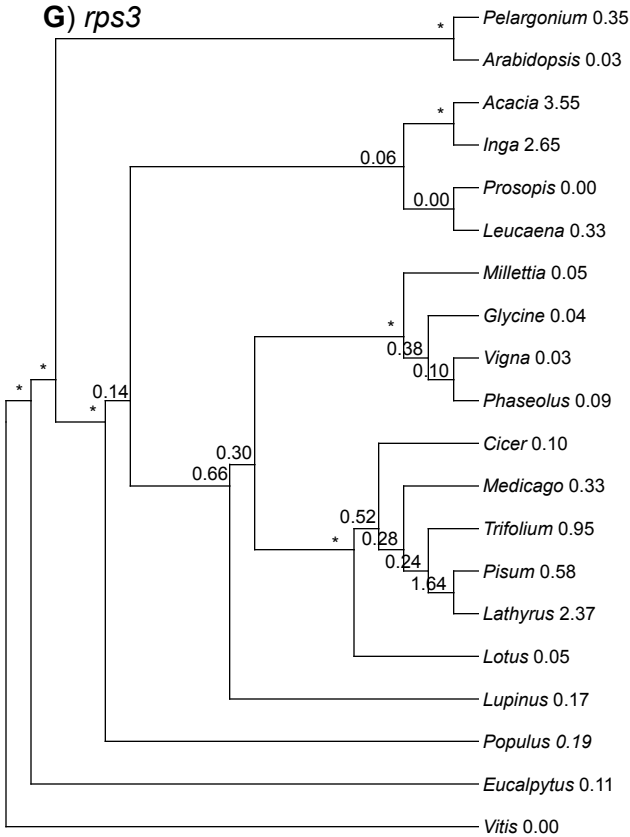
Supplementary Materials.

Title: Mimosoid legume plastome evolution: IR expansion, tandem repeat expansions, and accelerated rate of evolution in *clpP*.

Authors: Diana V. Dugas, David Hernandez, Erik Koenen, Erika Schwarz, Shannon Straub, Colin E. Hughes, Robert K. Jansen, Madhugiri Nageswara-Rao, Martijn Staats, Joshua Trujillo, Nahid H. Hajrah, Njud S. Alharbi, Abdulrahman L. Al-Malki, Jamal S. M. Sabir, and C. Donovan Bailey

Supplementary Figure 1. Trees with dN/dS ratios calculated in PAML v4.7⁴⁹. A) *atpF*, B) *clpP* C) *cemA*, D) *psbH*, E) *psbT*, F) *rps2*, G) *rps3*, and H) *rps4*. Values given for each node or terminal represent the dN/dS ratio. An “*” indicates cases with a dS of 0 and $dN > 0$.

A) *atpF***B) *cema*****C) *clpP*****D) *psbH***

E) *psbT***F) *rps2*****G) *rps3*****H) *rps4***