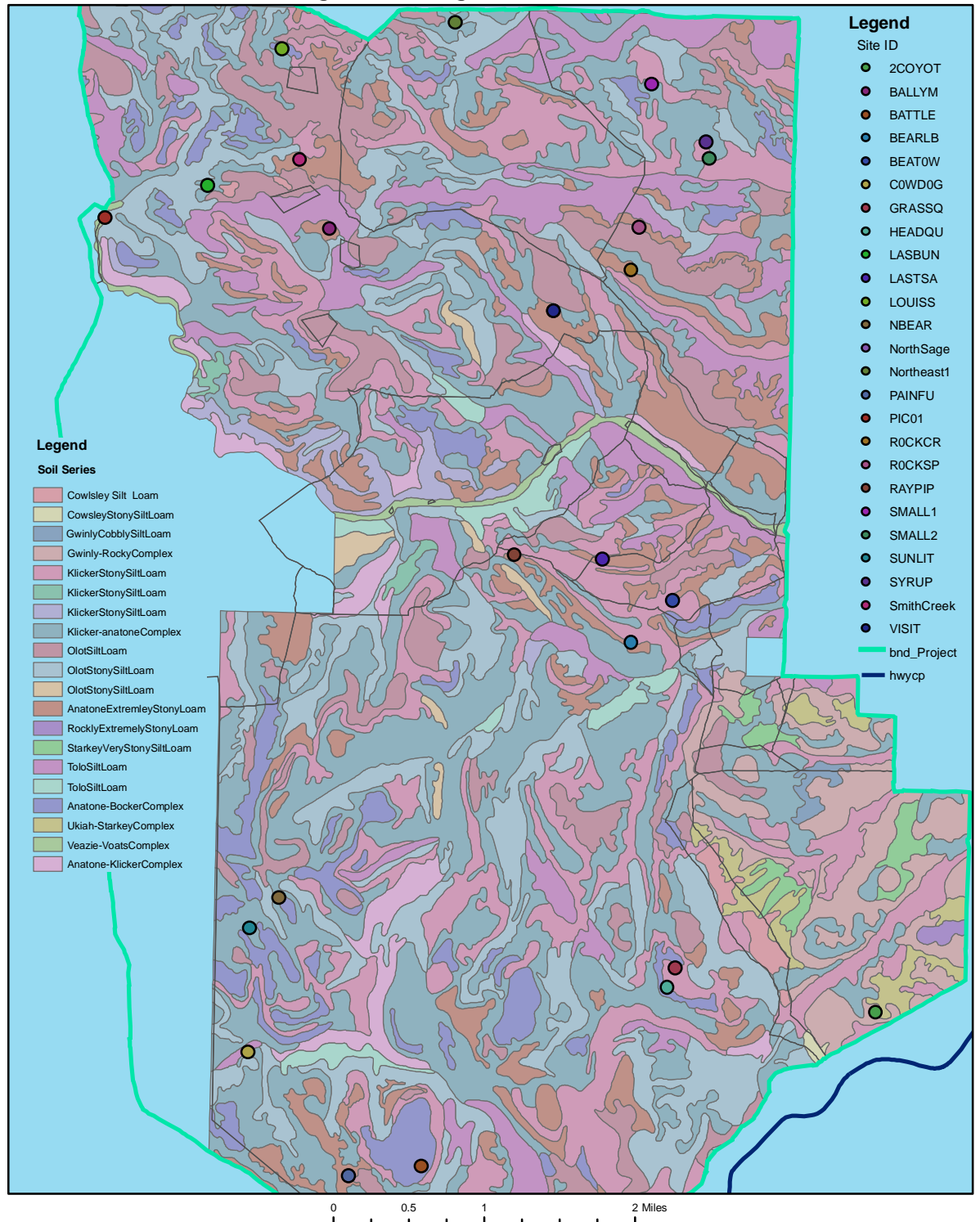
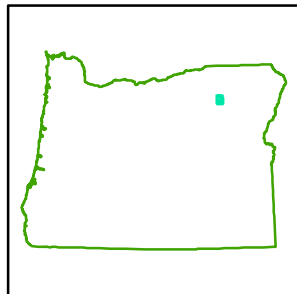


Known Soil Data For Starkey Study Sites

| SITE | SOIL |
|-----------------|------------------------------|
| SmithCreek | Anatone extremely stony loam |
| NorthSagebrush | Anatone extremely stony loam |
| 2Coyotes | Ukiah-Starkey complex |
| Bally Mtn | Anatone extremely stony loam |
| Battle Flat | Anatone-Bocker complex |
| Bear Little Bea | Klicker stony silt loam |
| Bear Tower | Klicker stony silt loam |
| Cow dog | Klicker-Anatone complex |
| Grassquarters | Klicker stony silt loam |
| Headquarters | Klicker stony silt loam |
| Last Bunch | Klicker-Anatone complex |
| Last Sage | Anatone extremely stony loam |
| Louis Sage | Anatone-Bocker complex, |
| North Bear | Anatone-Bocker complex |
| Painful | Anatone extremely stony loam |
| Pico1 | Olot stony silt loam |
| Rock Creek | Anatone extremely stony loam |
| Rock Spring | Anatone extremely stony loam |
| Ray's Pipo | Klicker stony silt loam |
| Northeast1 | Klicker-Anatone complex |
| Small1 | Klicker-Anatone complex |
| Small2 | Klicker stony silt loam |
| Sunlight | Klicker-Anatone complex |
| Syrup Creek | Klicker-Anatone complex |
| Visit | Anatone extremely stony loam |



Created by Amanda Hardman 30NOV2006 with soil data from the NRCS. Soil coverage is incomplete for this area Starkey Infrastructure from USFS. Hwy coverage from ODOT GPS of sites collected in the feild with WGS1984 datum and Lat Long coordinate system. All data projected in NAD 1927, UTM zone 11N.