

INTRODUCING THE 4-H HORSE PROJECT

Many people, young and old, are discovering the satisfaction and pleasure that horses can bring them. The 4-H Horse Project can be an exciting and worthwhile experience for both you and your horse. To be a 4-H Horse Club member, you must first enroll in 4-H in your county.

In addition to the 4-H goals for youth, the 4-H Horse Project has six main objectives:

1. Learn to know and select a good saddle horse
2. Learn to care for horses properly
3. Learn to ride
4. Learn to train and handle horses
5. Acquire a broad equine knowledge base
6. Enjoy a healthy outdoor recreational activity

A 4-H Horse Project animal may be a horse, pony, mule, or donkey, which you may ride, drive, or train. Stallions over 12 months of age are not allowed as a 4-H project. 4-H uses the industry standard of January 1 as a horse's birthdate to determine age.

If you don't have a horse, you may belong to a 4-H Horse Science club or join as a horseless member. With these options, you can learn about horses, compete in all activities that do not require horses, and work with other youth on horse-related subjects.

You may own, share, borrow, or lease your project animal. (Refer to PNW 574, the *4-H Horse Contest Guide*, for project animal guidelines.) In any case, you should be the one who is responsible for your horse's primary care and management. This is your project animal,

and you need to be doing the work! If you board your horse, know what and how much it gets fed. Know what vaccinations it receives and what its deworming schedule is. Observe its foot care. Take on as much of the responsibility of caring for the horse as you can.

If you're a younger or inexperienced member, you may need help training your horse. Even older, experienced members need assistance from time to time. Remember, though, that this is your project, so do as much of the training and preparation for shows as you can.

There are many activities in the 4-H Horse Project. You may show your horse in a variety of classes: showmanship, English equitation, Western equitation, trail, dressage, driving, and jumping. Western Gaming events include Barrels, Figure Eight Stake Race, Key Race, Pole Bending, and Flag Races. You can show a young horse in Ground Training, and some counties offer First Year Under Saddle, In-Hand Trail, or Ranch Horse classes.

In addition to showing your horse, you may take part in judging, hippology, horse bowl, presentations, and public speaking contests. Some members may wish to participate in clubs that mostly do pleasure riding, trail riding, or horse camping.

Keeping accurate records is also an important aspect of the 4-H Horse Project.

No matter which activities you choose, you'll find the 4-H Horse Project a challenge and a chance to learn-by-doing in all aspects of horsemanship.

THE HORSE

BREEDS

There are many breeds of horses. Following are brief descriptions of some of the more common or notable breeds. For more information, visit one of the many websites on horse breeds.

LIGHT HORSES

AMERICAN SADDLEBRED



AMERICAN SADDLEBRED

The **American Saddlebred**, also called the American Saddlehorse, was developed in America in colonial times from a Thoroughbred sire, Denmark, bred to a pacer. Riders needed a horse that could give a fast, easy ride over long distances.

The mature American Saddlehorse is between 15 and 16-2 hands in height and weighs from 1,000 to 1,200 pounds. These horses are usually one solid color with white markings. The predominant colors are chestnut, bay, brown, black, and gray. The natural stride of this breed is free and open with great animation. This is naturally a three-gaited breed, but it is easily trained to rack and slow-gait as well. They are noted for a high head carried on a long graceful neck, a level croup, and a high-set tail. They are most widely used for showing in saddle seat and fine harness classes and riding on bridle paths.



ARABIAN. Photo courtesy Arabian Horse Association

ARABIAN

Arabians are one of the first breeds of livestock domesticated by humans. All breeds of light horses and some of the heavy horses were developed from this breed.

The head is triangular with a wide forehead and small muzzle. The forehead is convex, but the profile is usually somewhat dished. The neck is long, naturally arched, and the back is very short. The Arabian is very compact; mature animals usually weigh from 850 to 1,100 pounds and are from 14 to 15 hands high. Preferred colors are bay, gray, and chestnut with white markings common on the head and legs. The versatile Arabians are used in pleasure riding, ranch work, and parades. Arabians or half-Arabians have been noted for endurance and speed in competitive trail rides and are popular at horse shows.



MORGAN. Photo courtesy AMHA

MORGAN

Morgan horses are known for versatility, stylish action, stamina, and ease of handling. They are the oldest breed originating in America. All Morgans trace back to a stallion named Figure, born in 1789 in Springfield, Massachusetts, and acquired by Justin Morgan, a Vermont teacher and horseman. This stallion became the founding sire of the Morgan breed.

Characteristics of the breed are an upright head carriage, well-crested neck, fine muzzle, broad forehead, small ears, wide chest, and short back. Morgans average 14-2 to 15-2 hands high and weigh about 1,000 pounds (with individual exceptions under and over). Colors allowed within the breed are bay, black, brown, chestnut, palomino, creme, dun, and buckskin.

Morgans are highly versatile and may be used for pleasure and driving as well as jumping, dressage, reining, and endurance.

AMERICAN QUARTER HORSE

The **American Quarter Horse** originated during the colonial period, primarily in Virginia and the Carolinas. Settlers crossed Andalusian mares with English stallions that were like Thoroughbreds. They are called “Quarter Horse” because originally they were raced for about a quarter of a mile.

Quarter Horses are characterized by heavier muscling than other breeds, particularly in the thigh, gaskin, and forearm. The racing Quarter Horse carries considerable Thoroughbred blood, though it is usually a little heavier in muscling and not quite as angular as the Thoroughbred. Mature horses usually stand from 14-3 to 16 hands high, though they may be taller, and usually weigh from 1,100 to 1,300 pounds. The predominant colors are sorrel, chestnut, bay, black, and dun. Animals with excessive white markings may be eligible for registry, but there are stringent American Quarter Horse Association (AQHA) guidelines.

Quarter Horses are used widely in the West for range and rodeo work. They are known for their speed over a short distance and for what cowboys refer to as “cow sense.” They also are popular for pleasure riding and Quarter Horse racing.



AMERICAN QUARTER HORSE



TOBIANO. Photo courtesy APHA ©2006

FOUNDATION QUARTER HORSE

The **Foundation Quarter Horse** must have bloodlines that are at least 80 percent Quarter Horse. The association looks back 11 generations or to the first introduction of Thoroughbred blood to determine if a horse is eligible.

The most important attribute of a Foundation Quarter Horse is that it be versatile. Historically, this horse could work cows, run races, work in harness, and was an outstanding trail horse. The horse is quiet, willing, and intelligent. It is medium-size, heavily muscled, with sturdy bones and feet. The length of the leg should not be longer than the depth of the heart girth. The head is short with a large jaw, the eyes are set far apart, and the neck is medium length. Color standards are the same as for the American Quarter Horse.



OVERO. Photo courtesy APHA ©2006

AMERICAN PAINT HORSE

American Paint Horse foundation breeding was basically a crossing of pinto mares to Quarter Horse stallions. To be registered as a paint, the horse must meet minimum color requirements, and the horse must come from stock registered with the American Paint Horse Association (APHA), the American Quarter Horse Association, or the Jockey Club (Thoroughbred).

Like Quarter Horses, Paints are stockier and more heavily muscled than some other light horse breeds. They show marked refinement about the head.

Paints can be registered with a tobiano, overo, or tovero color pattern. **Tobianos** (toe-be-AN-o) tend to have solid-color heads with usual white markings (star, stripe, snip, etc.). They have regular oval spots with dark hair usually covering one or both flanks. Their legs are usually white, and their tail is often two-color. **Overos** (o-VER-o) usually have dark legs and bold white head markings (often bald-faced). They have irregular white markings, but the white does not usually cross the back between the withers and the tail. Their tail is usually one color. **Toveros** (toe-VER-o) have dark pigmentation around their ears and mouth. One or both eyes are blue. They have spots of varying sizes on their chest and flanks which may extend up the neck, across the barrel, or over the loin.



TOVERO. Photo courtesy APHA ©2006



TENNESSEE WALKING HORSE

TENNESSEE WALKING HORSE

Tennessee Walking Horses are the product of Thoroughbred and Standardbred blood crossed with Morgan and Canadian Pacers. The stallion that contributed the most to the breed was named Allen. Tennessee Walking Horses are distinguished by their running walk, a fast four-beat gait in which the hind feet leave imprints beyond the forefeet. The running walk averages 6 to 12 miles per hour. Other special gaits are the “flat-foot walk,” a slow even gait, and the “canter,” a refined gallop with a slow, high, rolling motion.

Tennessee Walking Horses have long, arched necks, pronounced withers, flat croups, and high-set tails. Their manes and tails are left long and flowing. Mature horses stand from 15 to 16 hands high and usually weigh from 1,000 to 1,200 pounds. Color varies from sorrel or chestnut to various shades of bay and brown with black, roan, white, and gray being common. Frequently there are white markings on the feet and legs.

This breed is used as a show horse and for pleasure riding.



THOROUGHBRED

THOROUGHBRED

Thoroughbreds were developed in England for racing. The three foundation sires (the Byerly Turk, the Darley Arabian, and the Godolphin Arabian) were brought to England and bred to native horses. The result is a horse that can carry weight over extended distances.

The Thoroughbred is usually taller and more angular than other breeds. The average height is over 16 hands. Thoroughbreds have long, straight necks; prominent withers; long backs; and long, sloping shoulders. Their abdomens are tucked up, and they have slender legs with long pasterns. They have very fine skin which tends to show the veins underneath. Colors are bay, brown, chestnut, black, or gray, with occasional white markings.

Thoroughbreds are used in both flat and jump racing, and they are popular as hunters, saddle horses, and polo ponies.



STANDARD BRED. Photo courtesy Ed Keyes

STANDARD BRED

The **Standardbred** originated in the early 1800s in the vicinity of New York and Philadelphia as a road driving and harness racing horse. The breed was derived mainly from Thoroughbred blood. Hambletonian 10 is considered the foundation sire of the breed. The name Standardbred was used because horses were bred to trot 1 mile or better in a standard speed of 2½ minutes.

The Standardbred resembles the Thoroughbred but is not as tall and has a longer body. Heights range from 15 to 16 hands and weights from 900 to 1,150 pounds. Preferred colors are bay, chestnut, brown, and black. Blaze faces and white stockings are not typical of the breed.

Standardbred harness races are popular in the East. Standardbreds either trot or pace, and there are harness races for both.

PONIES

PONY OF THE AMERICAS

The Pony of the Americas (**POA**) originated in Iowa about 1955 when an Appaloosa mare was bred to a Shetland stallion. They now have the characteristics of Arabians and Quarter Horses in miniature, with Appaloosa coloring. They must be between 46 and 56 inches in height. They have a slightly dished face, mottled skin, and striped hooves. POAs are used as larger Western-type riding ponies for children. They also are shown English and in harness.

SHETLAND

Shetland ponies are natives of the Shetland Isles north of Scotland. Their natural hardiness may be due to the harsh environment in which they developed. They are recognized as the strongest equine relative to their size. The breed registry recognizes two types: Moderns and Classics. Moderns are very refined, stylish harness ponies with animated gaits. Classics are refined pleasure ponies with an easy way of going.

In Shetland shows, classes are divided into two height divisions: under 43 inches, and 43 to 46 inches. Shetlands weigh from 300 to 400 pounds. They may be any color. The Shetland is used as a mount for children; for harness racing; and for pleasure, roadster, and fine harness driving.

WELSH

Welsh ponies originated in Wales. They have since been refined with Hackney (which gives them their lively action) and Arabian blood.

Their withers are slightly pronounced, and they have a short back with a slight depression toward the croup. Any color except piebald and skewbald is acceptable. A Welsh pony cannot exceed 14.2 hands. They usually are mounts for small children and sometimes are used in harness.

COLOR BREEDS

APPALOOSA

Appaloosa horses are of ancient origin, but the ancestors of the modern Appaloosa were introduced into Mexico by the Spanish explorers. Eventually the Nez Perce Indians in the Pacific Northwest prized and developed the color patterns. Because they were from the Palouse region of the Northwest, white settlers called them "a Palouse horse," which became slurred into "Appaloosa."

There are six variations of coat color: snowflake, leopard, frost, marble, spotted blanket, and white blanket. All have striped hooves; obvious sclera; and short, sparse manes and tails. They have mottled skin, especially around the nostrils and lips. The minimum height is 14 hands, and they usually weigh from 950 to 1,200 pounds. They are used as pleasure horses and working stock horses.



POA. Photo courtesy POA Magazine



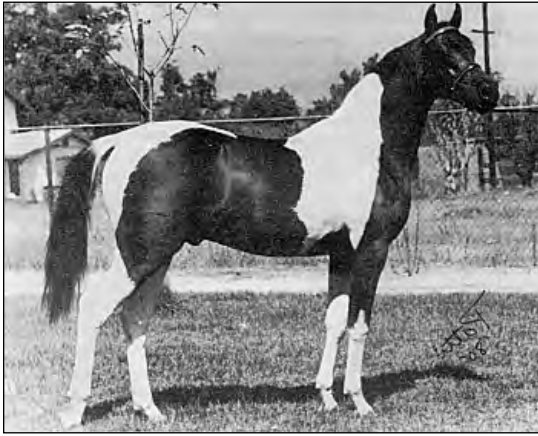
SHETLAND. Photo courtesy ASPC



WELSH



APPALOOSA. Photo courtesy Appaloosa Horse Club



PINTO

PINTO

The **Pinto Horse Association (PtHA)** is a color registry for pinto horses with at least one parent registered in any light horse breed (Appaloosa and Draft breeds are not allowed). Pinto comes from the Spanish word “pintado” meaning painted.

Minimum color requirements are basically 75 square inches for one body spot, and 15 square inches each for three or more spots on the body. Only color visible from a normal standing position is considered. Horses with black as the darker color are called Piebald. Skewbalds have anything but black as the darker color. The two registered colors are tobiano and overo (see “Pinto colors,” page 15, for descriptions). Since Pintos are bred for color and can be almost any breed, there are no consistent conformation traits. Four types of animals are registered: stock type (Quarter Horse); hunter type (Thoroughbred); pleasure type (Arabian or Morgan); and saddle type (Saddlebred, Hackney, or Tennessee Walking Horse).

Ponies 14-2 hands and under are covered by similar rules.

PALOMINO

The **Palomino** cannot be an established breed because its distinctive color cannot be passed on from generation to generation. The body color of a Palomino is described as that of a “newly minted gold coin,” but it can vary from light to dark. The forelock, mane, and tail are lighter than the coat color and can have no more than 15 percent dark hairs. Stars and stripes are permitted on the face, and white markings are allowed on the lower legs. They stand 14 to 17 hands tall depending on their breed.

BUCKSKIN

The modern **Buckskin (Dun)**, technically a color breed, actually has a strong, ancient heritage. In the West, horses of the buckskin, dun, red dun, and grulla (grew-ya) hues trace to the Mustang-Spanish Barb descendants which originated in Spain as the Sorraia. Other Buckskins brought to this country can be traced to the Norwegian Dun, descendants of the nearly extinct Tarpan horses. Along with a mixture of other bloods, Buckskins can be found in most breed types.

The American Buckskin Registry Association (ABRA) has limitations on how much white is permitted. Horses with a solid body coat color are accepted. Horses with a body coat pattern (Paints or Appaloosas) are not. (See “Colors and Markings,” page 15, for more information on dun coloring, points, and markings.)

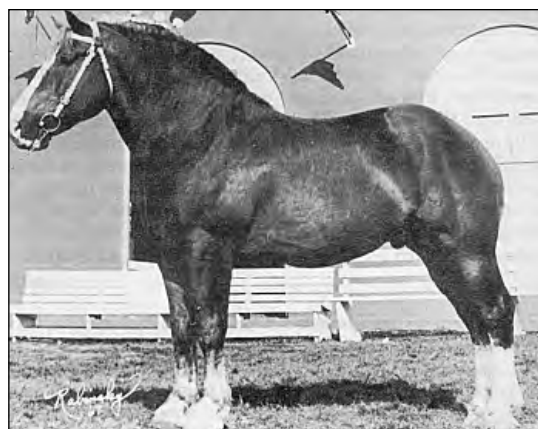
ABRA registers light horses only. Horses with draft blood are not eligible.

DRAFT HORSES

BELGIANS

The **Belgian** is known as the widest, deepest, most compact, most massive, and lowest set draft breed. It is extremely quiet, docile, and patient. Its action is powerful, but less springy than the Clydesdale or Percheron. Mature stallions stand 15-2 to 17 hands and weigh from 1,900 to over 2,200 pounds. Originally mainly a bay breed, today the majority of Belgians are chestnuts. Many have flaxen manes and tails and white-blazed faces.

In the United States, Belgians far outnumber all other draft breeds.

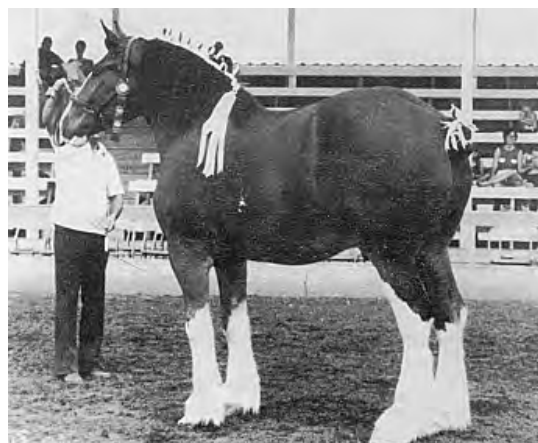


BELGIAN

CLYDESDALE

The **Clydesdale** was named after the valley of the River Clyde in Scotland, where it originated. It was imported from Scotland and Canada in the early 1870s.

More rangy and lighter than other draft breeds, the stallions average from 1,700 to 1,900 pounds and stand 16 to 17 hands high. Clydesdales have a broad face with a straight or convex profile. Their necks are long and broad at the base with prominent withers, and they have wide, deep chests. Their hind legs are frequently cow-hocked. Bay, black, and brown with white markings are common colors. They have much feathering with flowing hair about the fetlocks. The Scots placed particular emphasis on style and action, and the animals make a very pretty picture in parades and exhibitions.



CLYDESDALE

PERCHERON

The **Percheron** was the most popular of all breeds during the draft horse era. It originated in France in the La Perche district. It was developed from Flemish stock that contained Arab blood. Imports to the United States began in the 1840s.

Percherons have handsome, clean-cut heads that are small in relation to the size of their bodies. They have short, muscular necks with a slight arch. Their withers are moderately prominent, their backs are sometimes slightly hollow, and their croups are wide and rounded. They have light feathering. About 90 percent of Percherons are black or gray. Stallions stand 16-1 to 16-3 hands and weigh from 1,900 to 2,100 pounds.

Percherons have been used in the development of heavy hunters. They are noted for good action, excellent temperament, and long life spans.



PERCHERON. Photo courtesy Linda Tangen

SHIRE

The **Shire** is the tallest horse in the world, usually standing 17 to 18 hands. The largest of the draft breeds, they weigh more than 2,000 pounds, but they are docile and good-natured.

Although the origin is not fully known, the Shire is a very old breed from the central counties in England. They are thought to have descended from the Great Horse, a medieval charger that was used in jousting.

The Shire has immense power, with its thick, powerful hindquarters and well-muscled forequarters. Its face is nearly convex, and it has a long, crested neck. Its legs have fine, silky

feathering. Most Shires are dark with white markings. Black is the preferred color.

SUFFOLK

The **Suffolk** is the smallest of the draft breeds, with an average height of 16-1 hands. It takes its name from Suffolk County, England, where it was developed exclusively for farm use.

The Suffolk has great pulling power. It has a short head with a straight profile, massive neck and shoulders, and short legs with little feathering. The horse matures early and is long-lived. Suffolks are always chestnut-color, although they vary from dark liver to light sorrel. Usually there are no white markings.

WARMBLOODS

Warmbloods are a relatively recent development in horse breeding and are quite new in the United States. They were bred for competitive equestrian sports such as 3-day eventing, dressage, and show jumping. Various breeds were formed in individual European countries by crossing the local draft breed (cold blood) with Thoroughbreds (hot blood). They often are named for the country in which they originated. The **Dutch Warmblood, Swedish Warmblood, Swiss Warmblood, Danish Warmblood, British Warmblood, and German Warmblood** are all successful competition horses.

In general, Warmbloods have long heads that show a straight or slightly convex profile. They have long, muscular necks with pronounced withers. Their backs are long and straight, and their shoulders are long and sloping. Legs are strong and well-muscled. They are mainly solid colors.

Four German Warmbloods are worthy of particular note.

- The **Trakehner**, developed in East Prussia with lots of Thoroughbred and Arabian blood, is the most elegant and lightest in type of the German Warmbloods. Its great stamina and extravagant, free action make it much in demand for dressage and eventing.
- The **Hanoverian** is Germany's top Warmblood and is frequently used to improve other breeds. Bred in Hanover and lower Saxony, it's a slightly heavier type with tremendous power in its shoulders and quarters that have helped it become Germany's most successful competition horse. The Hanoverian has a distinctive, elegant tail-carriage.
- The **Holsteiner**, bred in Holstein, Germany, has a slightly heavier frame than the Hanoverian. It was first bred in the 14th century as a heavy war horse; recently, Thoroughbred, Trakehner, and Cleveland Bay blood have been added. The result is excellent sports horses with good action.
- The **Oldenburg** has one of the oldest traceable lineages of any Warmblood, dating back to the mid 1600s. It is the biggest and heaviest of the modern Warmbloods. Originally used as a carriage horse, today it is a top competitor in all equine sport disciplines.



HANOVERIAN. Photo courtesy Lynn Puana

OTHER BREEDS

ANDALUSIAN

The **Andalusian** was developed in the Spanish province of Andalucía by crossing the Iberian horse with the Barb. Andalusians were brought to the Americas by the Spanish explorers, and they have since influenced almost all American breeds.

Andalusians stand 15 to 16 hands. They have proud heads with an almost convex profile; strong, arched necks; and unusually short backs. They have a broad, deep chest, and their thick, wavy tail is low-set. They often are gray, but also can be white, bay, roan, or chestnut. They are very athletic and fiery, but they are calm enough to use for dressage.



ANDALUSIAN. Photo courtesy IALHA

LIPIZZANERS

Lipizzaners are most famous for the haute école (High School dressage) performed by members of the Spanish Riding School in Vienna, Austria. The breed was developed near the village of Lipizza in the early 1700s from a Kladruber mixed with Arabian and Andalusian blood.

A Lipizzaner's build is strong, compact, and elegant. It has a large, straight or slightly convex head; a crested neck; short, strong legs; and a full, fine mane and tail. It stands 15-1 to 16 hands high. Lipizzaners are usually gray, but they may be black, bay, roan, or white. They are highly intelligent and have a calm temperament.

MINIATURE

A **Miniature** should look like the smallest possible perfect horse. Whether it looks like a tiny Quarter Horse, Arabian, Thoroughbred, or draft horse, it should be sound; well-balanced; and possess correct conformation, strength, and symmetry. All colors are possible.

Miniatures are a "height" breed. They are measured from the last hairs at the base of the mane to the ground. The American Miniature Horse Association registers horses 34 inches and under. The American Miniature Horse Registry recognizes Division A horses with a maximum height of 34 inches, and Division B horses 34 to 38 inches high. In 4-H, Miniatures can be shown in showmanship, driving, ground training, and costume. At breed shows, they also are shown in trail-in-hand and jumper-in-hand.

Miniatures often are kept as pets and are used in therapeutic programs for the disabled and aged.

MUSTANGS

Mustangs are feral horses that live in the western United States. They derive from horses brought to the New World by the Spanish which escaped, reproduced, and reverted to the wild. They crossbred with other loose horses, including draft breeds, French blood, and Friesians. Today, only a few isolated herds, such as the Kiger Mustang and Cerat Mustang, show pure Spanish-type blood.

There is little breed uniformity, as environmental factors often play a large role in development. Typically, the Mustang



MUSTANG. Photo courtesy National Wild Horse and Burro Program

stands 14 to 15 hands high. They usually have a heavy head, low withers, a wide chest, short back, and straight shoulders. They can be any color.

The large herds of Mustangs that once roamed the West were reduced drastically in the early 1900s as ranchers shot them to leave more grazing for cattle. The Wild Free-Roaming Horse and Burro Act, passed by Congress in 1971, now protects these animals. The “Adopt-A-Horse” program began in 1973 as a way to control the growing population. Individuals can adopt a captured Mustang for a fee, and after 1 year of demonstrating proper care, the horse becomes legally theirs. Mustangs require an experienced handler, but they are strong, sure-footed, have remarkable endurance, and are highly intelligent.

NORWEGIAN FJORD

The **Norwegian Fjord** is one of the the world’s oldest breeds. It is believed that the original Fjord horse migrated to Norway and was domesticated over 4,000 years ago.

The gentle disposition of the Fjord horse is its most outstanding quality. They are hardy, long-lived, agile, sure-footed, and willing. They learn fast and have an amazing ability to retain what they learn, even after long periods of inactivity. Their cool temperament and graceful, balanced gaits, both under saddle and in harness, make them the ideal family horse.

Approximately 90 percent of all Fjord horses are dun in color. The other 10 percent are red dun, gray, white, or yellow dun. The Fjord retains the “wild” dun color of the original horse as well as the primitive markings which include zebra stripes on the legs and a dorsal stripe that runs from the forelock down the neck and back and into the tail. The center hair of the mane is dark (usually black) while the outer hair is white. The mane is cut short so it will stand erect, and trimmed to emphasize the graceful curve of the neck.

The head is medium-size and well-defined with a broad, flat forehead and a straight or slightly dished face. The eyes are large. Ears are small and alert. The neck of the Fjord is well-muscled and crested. The body is short-coupled with good depth, large heart girth, and well-developed muscles. The legs are powerful, with substantial bone and excellent feet which are black in color. Fjords generally range in size from 13-2 to 14-2 hands and weigh from 900 to 1,200 pounds at maturity.

FRIESIAN

The **Friesian** is one of the oldest domesticated European breeds. It comes from the province of Friesland in northern Netherlands, where it was a popular war horse during the Middle Ages. It is used for light agricultural work, in harness, and in circuses. It is an excellent trotting horse and, together with the Hackney, has contributed to the development of all competitive trotting horses.

Today, the Friesian is often used as a dressage horse. Its appearance and high action make it noticeable in the show ring.

Friesians are always black with only a white star allowed. Their manes and tails are very long, often reaching to the ground. They have a compact build with a short, low-set neck that is carried vertically. They stand approximately 15 hands high and have feathering on the lower leg.



NORWEGIAN FJORD. Photo courtesy Robert M. Ensvick

HACKNEY

The **Hackney** originated in Great Britain. It is a spirited harness horse, known for its high-stepping trot and far-reaching action.

Hackneys have small heads, long muscular necks, low withers, long quarters, slender legs, and tucked-up abdomens. Their tails are high-set and often are cropped. They can be bay, brown, black, or chestnut, and frequently have white head and leg markings.

Hackney ponies look just like the horses except for their size: if the animal is 14-2 hands or under, it is registered as a Hackney pony.

PASO FINO AND PERUVIAN PASO

The **Paso Fino** and the **Peruvian Paso** have the same origin. Horses blended of Barb, Andalusian, Friesian, and Spanish Jennet were brought to the New World by the Spanish conquistadors. The horses that went to Puerto Rico, Colombia, and Cuba developed into the Paso Fino. Horses that went to Peru were isolated for several centuries with no outside blood introduced; they became the Peruvian Paso.

The Peruvian Paso tends to be a bit larger, both in height and in muscling, than the Paso Fino. Both can be any color.

These horses are distinguished by three unique, smooth gaits. The **paso fino** is the slowest gait, the **paso corto** is the smoothest, and the **paso largo** is the fastest. All are natural, four-beat gaits that are lateral rather than diagonal, making it easy for the rider to maintain a balanced seat. The Peruvian Paso also has a natural action called **termino**, in which the forelegs roll to the outside as the horse strides forward. The movement is graceful and flowing. Both breeds also walk and canter.

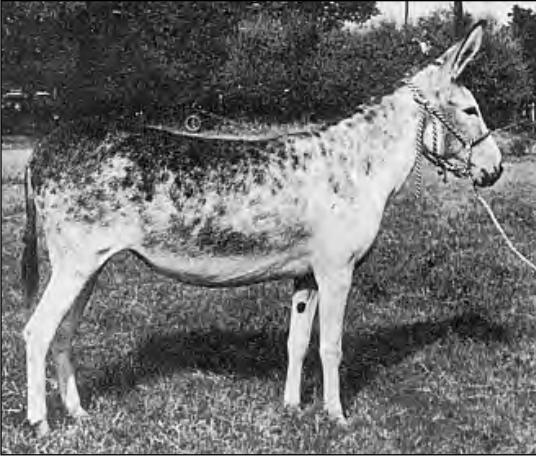
GAITED HORSES

Gaited horses come in many varieties. Most gaited breeds require that the performance of that breed's unique gait be natural from birth. Most breeds' conformation type gives the horse a predisposition to perform its natural gait. Some conformation attributes specific for gaiting include a higher neck placement from the withers, a steeper shoulder angle, and being somewhat cowhocked so the horse can drive from the rear by dropping its hindquarters.

A well-bred gaited horse initiates its gait when asked for the intermediate gait (a four-beat lateral or diagonal gait). Depending on the breed, the intermediate gait may be called a running walk, pleasure gait, medium tölt, foxtrot, or sobreandando. Each individual horse has a different quality of gait, just as individual trotting horses of the same breed have different qualities of trot.

Gaited horses include Mountain Horses, Icelandics, Tennessee Walking Horses, Gaited Morgans, Paso Finos, Peruvian Pasos, Missouri Foxtrotters, and Spotted Saddle Horses.

DONKEYS, MULES, AND HINNEYS



DONKEY



MULE

A **donkey** (or **burro**) is technically an ass. The male is called a **jack** and the female a **jenny**. The first donkey jack to enter the United States was probably the one presented by the King of Spain to George Washington in 1787.

A donkey is smaller than a horse, has longer ears, and has shorter, coarse hairs on the mane and tail. The hooves are smaller and deeper. It is less subject to founder or injury, and is hardier than the horse. It makes a loud, harsh sound called a bray.

A **mule** is a **hybrid**, a cross between a horse mare and a donkey jack. It resembles its sire, the jack, more than the mare. Until mechanization, the mule was the main source of animal power in the South.

Compared to a horse, the mule can withstand higher temperatures and adapt better to changes in feed, and has less foot trouble and fewer accidents. Good conformation qualities are identical to the horse, except that more stress is placed upon the size and quality of the ears and the size of the animal. Its natural tendency is to be lazy, so more energetic stock is popular.

A male mule that has been gelded is called a **john**. (Although male mules are sterile, they can have stallion tendencies and are almost always gelded at a young age.) A male mule that has not been gelded is called a **jack mule**. It is very rare to find a jack mule.

A female mule is called a **molly**. A molly comes into heat as a mare does, but she rarely conceives (mollies are almost always sterile).

A **hinney** is also a hybrid, a cross between a stallion horse and a jenny (female donkey).

COLORS AND MARKINGS

COLORS

The five basic coat colors of horses are:

Bay—Mixture of red and tan. It includes many shades, from a light tan (light bay) to a dark, rich shade that is almost brown (dark bay). A bay horse has black points (mane, tail, and lower portion of the legs).

Black—Completely black, including the muzzle and flanks. Fine tan or brown hairs indicate the horse is not a true black but a seal brown.

Brown—Almost black but has fine tan or brown hairs on the muzzle or flanks.

Chestnut (sorrel)—Basically red, from a light yellow (light chestnut) to a dark liver color (dark chestnut). Between these come the brilliant red-gold and copper shades. The mane and tail are usually the same color as the body. If they are light, they are called flaxen.

White—Horse is born white and remains white throughout life. Has pink skin and brown eyes (rarely blue).

Five major variations to these coat colors are:

Gray—Mixture of white and black hairs on black skin. They may appear black at birth, but lighten with age. Grays are often dappled. **Dapples** are small spots of a lighter or darker color.

Palomino—Golden color with white, silver, or ivory manes and tails.

Pinto—May be any of the coat colors, but it has irregular colored and white areas. Two color patterns are recognized: tobiano and overo.

The **tobiano's** head is usually marked like a solid color horse with a blaze, star, etc. All four legs are white, spots are regular and distinct, and there is usually dark color in the flank area. It may be predominantly white or colored.

The **overo** usually has at least one dark leg, a bald face, a one-color tail, and a calico (splashy) coat pattern with no white crossing the back. It, too, may be mainly white or colored.

Roan—Mixture of white hairs with one or more base colors. White with bay is red roan, white with chestnut is strawberry roan, and white with black is blue roan.

Dun—To be in the family of dun horses, the color must be buckskin, dun, red dun, or grulla (grew-ya). Following are descriptions of these colors. **Points** on a dun horse refers to mane, tail, legs, and ear frames.

Buckskin. The body coat is some shade of tan, from very light (creme) to very dark (bronze). Points are black or dark brown. A dorsal stripe is not required.

Dun. The body coat is some shade of tan, from very light (creme) to a dull or smutty brown (earth tone). Points, dorsal stripe, and other dun factor markings (see below) are dirty black or smutty brown. A dorsal stripe is required.

Red Dun. The body coat is a reddish tan without the range of shade seen in the other colors. Mane and tail are red or reddish brown, cream, or mixed. Points and dun factor markings are a reddish brown and must show a contrast with the body coat. A dorsal stripe is required.

Grulla. The body coat is slate color (bluish gray like the blue heron) from light blue gray to a brownish shade. Points and dun factor markings are black. A dorsal stripe is required.

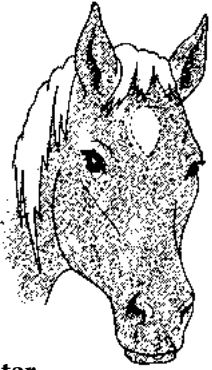
Dun factor markings

Dun horses exhibit some or all of primitive markings known as **dun factors**. These include dark ear frames, frosted forelock, cobwebbing under forelock, face masking, mottled or striped neck, frosted mane, shoulder stripe and rib barring, shoulder mottling, dorsal stripe, leg barring and mottling, and frosted tail. Consult the ABHRA for details.

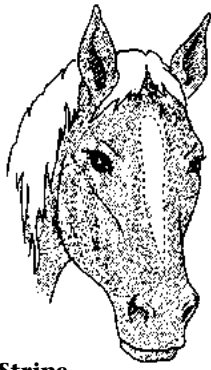
MARKINGS

White markings on the horse's head and/or legs are a good way to identify individual animals. Descriptions of markings are used on registration papers and veterinary documents. Therefore, it is important to use proper terminology when describing markings.

THE FIVE BASIC HEAD MARKINGS



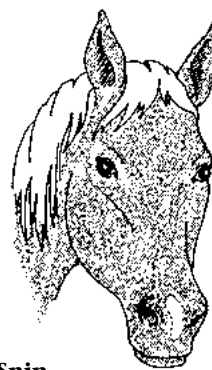
Star— Any white mark on the forehead above a line drawn from eye to eye



Stripe— A narrow white marking that extends from the eye line to the nostrils (may be continuous or interrupted)



Blaze— Broad stripe covering almost all of the forehead but not including the eyes or nostrils

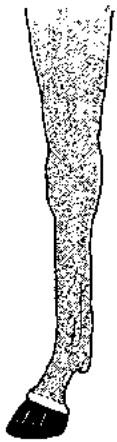


Snip— White mark between the nostrils or on the lips



Bald— White face including one or both eyes or nostrils

LEG MARKINGS



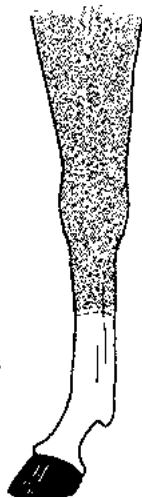
Coronet— White stripe covering the coronet band



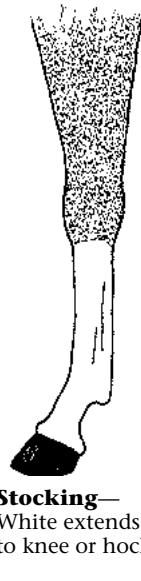
Pastern— White extends to fetlock



Ankle— White covers fetlock



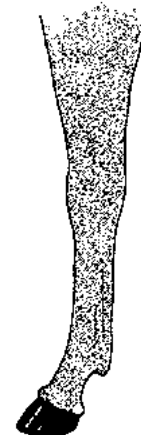
Half stocking (sock)— White extends halfway up cannon



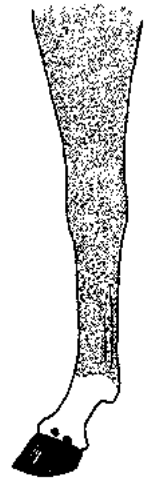
Stocking— White extends to knee or hock



Full stocking— White includes and goes above the knee



White spot on heel— White spot on inside or outside heel only. White does not cover entire coronet band

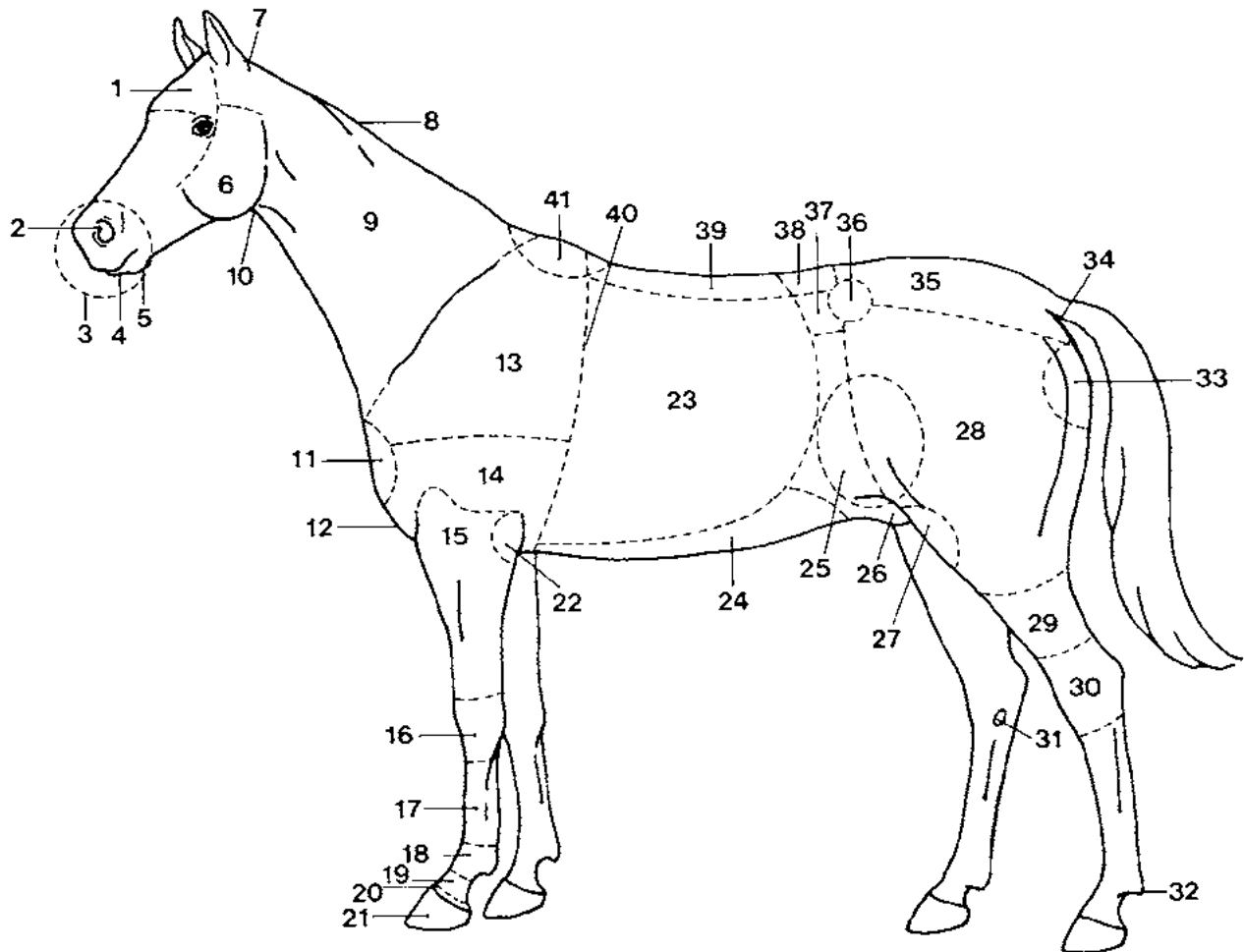


Distal spots— Dark spots on white coronet band (also known as **ermine marks**)

Whorls are patches of hair that swirl in the opposite direction to the surrounding hair. Often called “cow licks,” they can be found anywhere on the body, but are often on the forehead, neck, or in front of the stifle. They are valuable for identification purposes.

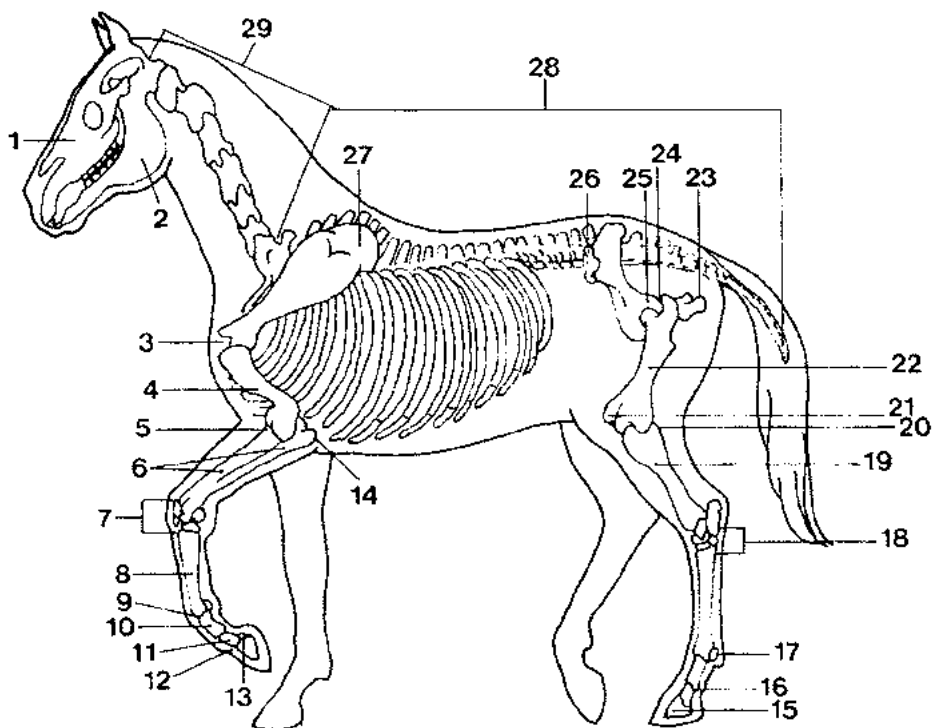
PARTS OF THE HORSE

You need to learn the correct names for the parts of the horse to be able to converse with other horse people. Also, if the horse is injured, it is helpful to be able to tell the veterinarian the specific location of the injury. You also should be able to identify the skeletal parts of the horse (see next page).



- | | | | |
|-----------------------|-------------------|----------------------|-------------------|
| 1. Forehead | 12. Chest | 23. Barrel | 34. Dock |
| 2. Nostril | 13. Shoulder | 24. Belly | 35. Croup or rump |
| 3. Muzzle | 14. Upper arm | 25. Flank | 36. Point of hip |
| 4. Lower lip | 15. Forearm | 26. Sheath | 37. Coupling |
| 5. Chin | 16. Knee | 27. Stifle | 38. Loin |
| 6. Cheek, jaw | 17. Cannon | 28. Haunch | 39. Back |
| 7. Poll | 18. Fetlock joint | 29. Gaskin | 40. Heart girth |
| 8. Crest | 19. Pastern | 30. Hock | 41. Withers |
| 9. Neck | 20. Coronet | 31. Chestnut | |
| 10. Throatlatch | 21. Hoof | 32. Ergot | |
| 11. Point of shoulder | 22. Elbow | 33. Point of buttock | |

SKELETON OF THE HORSE



- | | | |
|---------------------------------|----------------------------|------------------------------|
| 1. Skull (maxilla) | 10. First phalanx | 20. Stifle joint |
| 2. Mandible (jaw) | 11. Second phalanx | 21. Patella (knee cap) |
| 3. Shoulder joint | 12. Coffin joint | 22. Femur (thigh) |
| 4. Humerus (arm) | 13. Navicular bone | 23. Point of buttock |
| 5. Elbow joint | 14. Point of elbow | 24. Hip joint |
| 6. Radius and ulna
(forearm) | 15. Coffin bone | 25. Pelvis |
| 7. Carpal joint (knee) | 16. Pastern joint | 26. Point of hip |
| 8. Cannon bone | 17. Proximal sesamoid bone | 27. Scapula (shoulder blade) |
| 9. Fetlock joint | 18. Tarsal joint (hock) | 28. Spine |
| | 19. Tibia and fibula | 29. Vertebrae of neck |

HORSE PSYCHOLOGY AND BEHAVIOR

UNDERSTANDING THE HORSE

Horses are very sociable herd animals. Originally, they lived on open plains and walked many miles each day as they grazed. Because horses evolved as prey animals, their body, mind, and spirit are attuned to one basic focus: survival. A horse's slogan is "Act first and think later."

The horse has survived extinction by developing instincts based on hiding, flight (running away), or fighting (kicking and biting), and adapting to constantly changing conditions. The development of sight, hearing, touch, smell, memory, and the flight instinct have all equipped horses to escape from their predators.

SIGHT

A horse has a unique sense of vision that developed for a life of grazing. Horses use both **monocular** and **binocular** vision. Monocular vision allows the horse to see on each side. Binocular vision (like in humans) allows the horse to see in front. The size and position of the eyes along with the width of the head give the horse its large field of vision.

Range of vision is adjusted by raising and lowering the head. Most horses cannot see objects closer than a few feet to them without moving their heads. When the horse is in grazing position, the field of vision is about 320 to 340 degrees, which allows the horse to see its best. A horse must raise its head to see close objects.

Horses have difficulty focusing clearly on objects, but they are very good at detecting movement. They can move their eyes and see things on both sides of them at the same time. Horses

have two blind spots. They cannot see directly behind them, and they cannot see directly below their heads.

It takes time for a horse to adjust its eyesight to changes in light, such as going from daylight into a dark trailer or from a dark barn to the sun outside. Be patient and give the horse time to adjust.

Horses also have no depth perception. They perceive objects as flat instead of three-dimensional. This can adversely affect them when going through water.

HEARING

The horse's hearing is better than its sight. Because of this, the eyes and ears always work together. First, the ears point toward a sound so the horse can hear it better. Then, the horse tries to see what is making the sound. A long neck and rotating ears on a movable head enhance a horse's hearing.

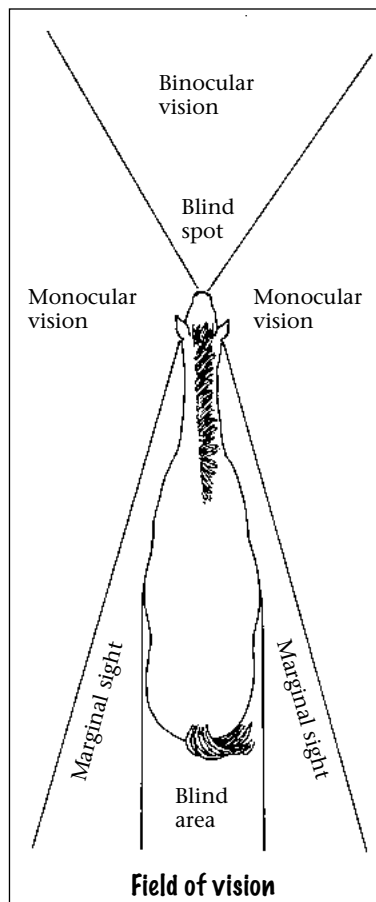
Because horses' hearing is so acute, they are sensitive to sound. Horses respond well to a soft voice. Voice commands work best when combined with gentle leg cues, light hands, and shifts in rider weight.

TOUCH

The horse has a well-developed sense of touch. Through its skin, the horse senses hot, cold, hard, soft, and pain. The most sensitive spots on a horse's body are the mouth, eyes, ears, nose, lower legs, flanks, neck, and shoulders.

Touch is the horse's most important sense for responding to cues from the rider. A horse responds readily to shifts in a rider's weight. Along with cues from your legs and hands, you can ask a horse to stop, turn, and go forward by slightly shifting your body weight.

A horse's mouth and sides must be kept sensitive through the correct and careful use of the rider's hands and legs. Biting should be done with care and reins handled with



light hands. A rider who jerks on the horse's mouth or constantly kicks the horse in the ribs will have an unresponsive horse.

Improperly fitting saddles can place undue pressure on the sensitive withers and back. This can cause injury and/or behavior problems.

Horses vary in their skin sensitivity, but most enjoy grooming and having their backs scratched. Comfortable, safe touch is critical to the horse's peace of mind. Smart handlers use this knowledge as a primary factor in their training methods.

SMELL

Horses do a lot of sniffing and tasting to determine whether they are in danger. A horse may flare its nostrils; or it may lift its head, raise its upper lip, and compress its nostrils in what is called a **flehman response**. Dilated nostrils can reflect interest, curiosity, or apprehension.

A horse's sense of smell is superior to that of humans and is inherent to its well-being. Mares and foals identify each other using smell as the primary sense. Stallions can identify mares in heat for great distances. Because their sense of smell is so acute, be sure to keep horses' quarters clean, especially of urine and feces.

MEMORY

Horses have wonderful memories that can enhance or harm their training. It is important to reinforce good behavior and stop bad behavior before it becomes a dangerous habit.

Horses learn through repetition, and while a horse's intelligence in solving problems may not be very high, its learning ability is. If they do something repeatedly, it will become a habit. For example, if you let a horse walk off as you mount it a few times in a row, the horse is likely to develop this as a habit.

Horses also learn by association, which means the horse remembers if a similar experience was pleasurable or unpleasant and responds to that memory. Horse handlers should make training sessions positive and be concerned with long-term well-being more than winning a battle. It is important to work through a horse's fears rather than punish it for its basic nature.

FLIGHT INSTINCT

Horses are generally curious and like to explore their environment. Since their vision isn't acute and they have virtually no depth perception, their natural instinct is to run

when they feel threatened. Horses see every experience in life as something either to fear and flee, or not to fear and therefore ignore. The running from fear is called their **flight instinct**.

Some horses may be fine at home but require more patience in unfamiliar surroundings. Young or inexperienced horses might run from certain sights, sounds, and smells that later in life they would ignore.

HORSE BEHAVIOR

A person's strength is no match for that of a horse, so we must learn to understand their behavior and natural instincts for a successful relationship with them. We try to interpret (or read) the horse's behavior under different conditions and learn to understand the horse's actions.

To read a horse, it is important to learn its body language and understand its mood. A horse's body language includes a flick of an ear, pawing of a foot, shaking of the head, or swishing of the tail. Observing these gestures daily teaches us to read our horses and communicate with them.

It is important to remember that each horse has its own set of characteristics and its own individual temperament. Training history and environment can influence the horse's behavior and help create the horse's personality.

Three factors can affect the horse's character: genetic makeup, effects of past experiences, and present circumstances. A horse's character or behavior can be changed, but it takes time and good horsemanship skills.

Horses are herd animals that look for a leader, so they are easily dominated. As the handler, it is important that your horse see you as its leader. When a horse lowers its head and licks its lips, it is a sign that it is being submissive and allowing you to be the leader. Always remember that dominance does not mean cruelty.

When working with horses, remember their basic fears: loss of balance, fear of falling, fear of water, injury to the poll area, and fear of an object that they haven't had experience with. It is always better to work through the horse's fears in a calm, quiet manner than to use force. Never rush the horse into something it is not ready and willing to try. Before a horse can learn, it has to know that everything is safe. When it feels safe, a horse is adaptable, versatile, and willing to submit.

STABLE VICES

A **stable vice** is any abnormal behavior a horse acquires. Vices can affect the horse's health and performance, in addition to being frustrating for its caretaker. Most vices are a result of improper management because the owner doesn't understand horse behavior and psychology. Because horses evolved as free-roaming herd animals, overconfinement, isolation, and poor feeding techniques often cause behavior problems. The more natural a horse's lifestyle, the less its chance of developing a stable vice. Wild horses almost never exhibit vices.

CRIBBING

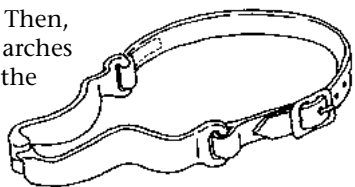
One of the best-known stable vices is **cribbing**. When a horse cribs, it grabs a solid object with its incisor teeth, arches its neck, and sucks in air. This behavior can lead to chipped and worn-down teeth, poor appetite, weight loss, and serious digestive problems. Also, cribbers cause substantial damage to property.

A horse often starts cribbing because it is bored. Once a horse learns to crib, it is extremely difficult to stop it. Each time a horse cribs, its body releases endorphins (natural pleasure-producing chemicals) to which it becomes addicted. Soon the horse would rather crib than eat.

Cribbing collars can help prevent a horse from cribbing. The collar fastens tightly around



the throatlatch. Then, when the horse arches its neck to crib, the collar becomes uncomfortable or restricts breathing.



NUTCRACKER CRIBBING STRAP

WOOD CHEWING

Often confused with cribbing, **wood chewing** is another common stable vice. Wood chewers gnaw on anything wooden (fences, stall walls, trees, doors, feeders, posts) but do not suck in air as

a cribbing horse does. Most wood chewers do not swallow what they chew, but they can get slivers in their mouths or lips and the chewing wears down their incisor teeth. Wood chewing can also cause colic, and it is destructive to the facility.

Horses can become wood chewers for several reasons. Too much confinement and boredom are common causes, but dietary deficiencies and parasites can also lead to this vice.

Solutions include making sure the horse gets plenty of exercise and a well-balanced diet, including plenty of roughage. It is also helpful to protect all wood by covering it with metal or painting it with a commercial product safe for horses to ingest. You might have to protect trees and fences with electric wire.

WEAVING AND STALL WALKING

Weaving and **stall walking** are two other common stable vices. Weaving is a rhythmic movement in which the horse swings its head from side to side and shifts its weight back and forth on its front legs. Stall walkers continually walk in circles around their stalls, often wearing tracks in the floor.

Both of these vices put stress on the horse's legs and cause fatigue. They are caused by the horse being confined too much and getting bored. Both vices can be alleviated by letting the horse have time outside and giving it frequent small meals to keep it occupied. Sometimes, getting a companion stallmate (such as a goat) can help a stall walker, while a weaver may enjoy a toy such as a ball hanging from the ceiling.

Other vices include pawing and wall kicking, which can loosen shoes and cause joint and other physical problems.

MULE BEHAVIOR

A mule's nature is different from that of a horse. Mules tend to be wiser than horses when it comes to their own welfare. When mules get frustrated or uncertain, they stop and think it over. (For this reason, people often label mules as "stubborn.") Unlike horses, mules rarely overeat or founder, and they seldom run into obstacles when running away. Horses have a flight instinct, but mules stop and think first.

Mules tend to be hardier than horses. Mules can stand heat and cold better than horses. Mules usually eat more slowly than horses, so feed them in a place where they can take their time to finish.

CHOOSING A HORSE

It is important to choose a horse that is the right match for you. There are many types and breeds to choose from, and you need to know what to look for and what each is capable of doing. Also, like humans, horses have individual dispositions or temperaments which are as important as any other factor in making your choice.

The first step in choosing a horse is to make a list of your requirements, taking into account all the factors listed below. If you know what you are looking for, you won't waste time going to see horses that don't meet your needs.

Perhaps the most important thing to do when choosing a horse is to seek expert advice. The wrong choice can be a frustrating, dangerous, unhappy affair. Even an experienced person can benefit from another point of view.

Before you begin looking at horses, consider the following factors.

RIDER'S EXPERIENCE AND HORSE'S LEVEL OF TRAINING

A "green" horse and a "green" rider are those who do not have much experience. A young horse and an inexperienced rider do not "learn together," and the combination often results in disappointment or accidents. The rider may become discouraged or frightened and lose interest in horses completely.

The less experienced a rider you are, the more dependable and well-trained the horse should be. A trained horse may cost more money than a young, unbroke, or spoiled horse, but it is the best choice. If you are a more experienced rider, you may want more of a challenge—but be careful not to overestimate your ability.

RIDER'S SIZE AND AGE

The rider's size affects his or her ability to make the horse perform. Even experienced riders may have trouble on a horse that is too big for them, as their legs may not be long enough to provide proper cues.

Ideally, if the horse is the right size for the rider, the stirrups will be nearly level with the bottom of the heart girth. This gives a secure seat and allows for effective use of leg aids. Generally, a horse should not be asked to carry more than 20 percent of its body weight. Therefore, if the horse weighs 1,000 pounds, the rider should not weigh more than

200 pounds. Since it can be hard to find a horse exactly the right size, it is better to buy a horse that is too big than one that is too small.

Many children begin with a pony, which can give several years of pleasure under saddle or in harness. Ponies also cost less to feed and require less space than a horse. Before buying a pony, be sure to think about how long the child can ride it before it is outgrown.

HORSE'S AGE

The horse's age should be consistent with what the rider desires the horse to do. Horses from 6 to 18 years of age are best for most purposes. Horses under the age of 5 usually are not fully trained (finished), and they may be unpredictable at times.

For more experienced members, choosing a yearling or 2-year-old and doing the training can be very satisfying.

HORSE'S GENDER

A **stallion** is a male horse able to sire (or father) a foal. Stallions over 12 months old may not be shown in 4-H. It takes an experienced handler to control one.

A **mare** is a mature female, 3 years or older. Mares are easier than stallions to manage, though they can become moody when in heat. If one of your goals is to raise a foal, a mare is your only choice.

A **gelding** is a male horse that has been castrated. A gelding is generally considered to be the most even-tempered and dependable horse. Geldings are often preferred for novice and youth riders.

A female horse under the age of 3 is called a **filly**, and a young male is called a **colt**. An unweaned horse is a **foal**.

BREED AND INTENDED USE

Study the characteristics of various breeds and note those suited to the type of riding you wish to do (or if you want to use the horse for pleasure, showing, sport, or breeding). Some breeds are better adapted to Western riding, some to dressage, some to jumping, etc. It is not practical to expect a horse to do well at an event that it is not bred to do.

A registered purebred horse is usually more expensive than a **grade** horse (a horse of mixed origins, not purebred). A crossbred horse

sometimes combines desired characteristics of both parent breeds and makes a good riding horse that is less expensive.

COLOR

Unless you are looking for a specific color breed to show outside of 4-H, such as a Buckskin or Paint, the horse's color should be one of your last considerations. Limiting yourself to a certain color decreases the pool of horses you can choose from.

CONFORMATION

Good conformation is especially important if the horse will be used for showing, breeding, jumping, or other athletic work. Look for an overall balanced appearance and a smooth blending of all the parts. Learn to recognize common unsoundnesses. Don't worry about blemishes that do not affect serviceability.

Refer to PNW 575, the *Horse Judging Manual*, for detailed information on conformation.

LEASE AGREEMENT

If you decide to lease a horse or other animal instead of to buy one, you must have a lease agreement with the owner. All leases should include the following:

- Names of lessor and lessee
- Description of the horse (or other animal)
- Length of time you are to lease the horse
- What you will pay to lease the horse
- What you can use the horse for, and limitations on use of the horse
- Facility requirements
- What the horse needs in the way of shoeing, feeding, and health care (including who pays for what)
- What happens in case of the horse's death or injury
- Other considerations as needed

BUYING A HORSE

Before you buy a horse, make sure you can make the commitment necessary to take proper care of the horse. A horse is a significant investment of time and money. If you are unsure whether you have the time and/or resources to own a horse, you might want to try leasing a horse first.

When you try out horses, be sure you have someone knowledgeable with you. Have the owner ride the horse or watch someone else ride it. You should ride the horse two or three different times, making sure you try everything you want the horse to do. Arrive early, so you can watch the horse being caught and tacked up. If possible, take the horse to a different setting to see how it behaves. Ask specific questions. **Don't be rushed into buying something.** There are a lot of good horses out there!

The horse's price depends on its age, training, and condition. The owner's eagerness to sell, the time of the year, and the availability of that type of animal are also factors. Often horses are less expensive in the fall, because owners don't want to bear the cost of keeping the horse over the winter.

The price may include tack and/or transportation home. Be sure this is agreed upon in advance and in writing.

When you have decided you are interested in a horse, arrange for a prepurchase exam by an independent veterinarian. Tell the veterinarian what you want to use the horse for. That way, she or he will know whether any problems found will make the horse unsuitable for your needs.

Once you've agreed to buy the horse, ask for a **sales contract**. This contract should include all of the following:

- Names of the seller and buyer
- Name of the horse with a detailed description
- Price, what is included in the price (tack, feed, transportation, etc.) and payment schedule
- Warranties on health and training, or "as is"
- List of known vices
- Statement that seller has the right to sell the horse
- Signatures of seller and buyer
- Date
- Return or void option

Do not pay in cash unless you get a written, signed receipt. Papers on a registered horse should be transferred at the time the final payment is made. You will need to check with the appropriate breed association for specific criteria on how to make this transfer.

Check to see if a brand inspection is required in your state or area.

