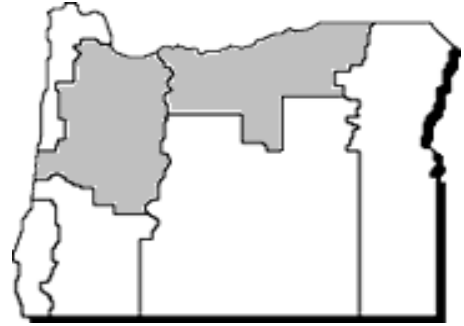


Commodity Data Sheet

Sweet Corn for Processing



Commodity number-crop year: 7340-07*

Extension Economic Information Office
Oregon State University
219 Ballard Extension Hall
Corvallis, OR 97331-3601 (541) 737-1436

May 2008

Item and area	Unit	2003	2004	2005	2006	2007
Total production						
Oregon	Tons	271,680	259,910	233,810	249,160	212,240
Minnesota	Tons	938,800	894,590	977,770	964,710	794,850
New York	Tons	108,780	110,200	116,160	115,240	^{1/}
Washington	Tons	900,540	826,140	792,160	806,140	854,310
Wisconsin	Tons	681,420	511,220	680,230	611,260	578,720
United States						
All	Tons	3,266,050	2,968,180	3,174,800	3,085,550	2,897,430
Canned	Tons	1,556,310	1,458,270	1,599,700	1,439,030	1,275,460
Frozen	Tons	1,709,740	1,509,910	1,575,100	1,646,520	1,621,970
Farm price						
Oregon	Dollars/ton	81.00	80.70	79.20	81.80	88.40
Minnesota	Dollars/ton	64.50	72.50	71.60	67.20	82.90
New York	Dollars/ton	78.40	77.70	80.40	77.30	^{1/}
Washington	Dollars/ton	76.90	70.10	69.00	66.60	72.70
Wisconsin	Dollars/ton	62.30	67.20	61.70	62.70	87.50
United States						
All	Dollars/ton	70.40	72.10	68.40	66.80	81.80
Canned	Dollars/ton	68.60	71.20	64.50	62.40	82.80
Frozen	Dollars/ton	72.00	73.00	72.30	70.60	80.90
Value of production						
Oregon	1,000 dollars	21,999	20,974	18,523	20,391	18,756
Minnesota	1,000 dollars	60,563	64,887	69,960	64,849	65,917
New York	1,000 dollars	8,523	8,563	9,339	8,908	^{1/}
Washington	1,000 dollars	69,256	57,890	54,675	53,701	62,070
Wisconsin	1,000 dollars	42,471	34,358	41,973	38,300	50,612
United States						
All	1,000 dollars	229,788	213,993	217,111	205,965	236,908
Canned	1,000 dollars	106,697	103,832	103,227	89,793	105,649
Frozen	1,000 dollars	123,091	110,161	113,884	116,172	131,259

*Shaded areas of map represent the major areas of production for this commodity. ^{1/} Not published to avoid disclosure of individual operations.

Source: USDA/NASS (National Agricultural Statistics Service)

Electronic access to this publication is available at: <http://oregonstate.edu/oain/>. Click the Commodity Data Sheets button.

Sweet corn for processing: Acreage, yield, production and value of sales, by county, Oregon, 2005-2007

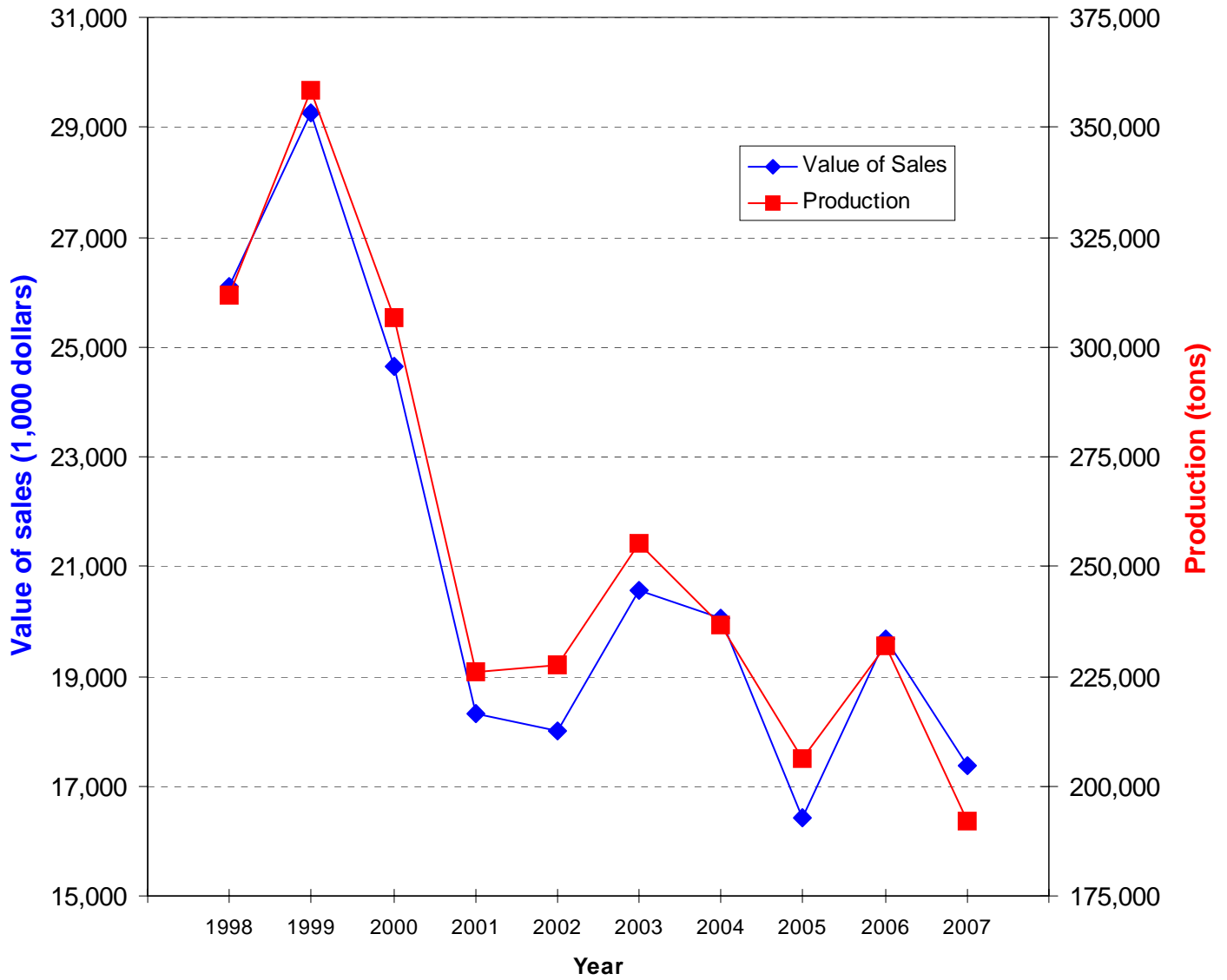
District & county	Acreage harvested			Yield per acre		
	2005r	2006r	2007p	2005r	2006r	2007p
	<i>Acres</i>	<i>Acres</i>	<i>Acres</i>	<i>Tons</i>	<i>Tons</i>	<i>Tons</i>
Washington	1,910	1,810	1,700	9.9	9.6	9.7
Not disclosed	14,290	15,620	11,800	10.2	9.8	10.1
Willamette Valley	16,200	17,430	13,500	10.2	9.8	10.1
Not disclosed	190	350	210	8.7	8.6	7.0
Coastal	190	350	210	8.7	8.6	7.0
Umatilla	-	1,930	1,840	-	9.7	9.4
Not disclosed	4,300	4,280	3,590	9.3	9.3	9.9
North Central	4,300	6,210	5,430	9.3	9.4	9.8
Not disclosed	-	-	210	-	-	7.3
Eastern	-	-	210	-	-	7.3
State total	20,690	23,990	19,350	10.0	9.7	9.9

District & county	Production			Value of sales ^{1/}		
	2005r	2006r	2007p	2005r	2006r	2007p
	<i>Tons</i>	<i>Tons</i>	<i>Tons</i>	<i>1,000 dollars</i>	<i>1,000 dollars</i>	<i>1,000 dollars</i>
Washington	18,939	17,409	16,554	1,559	1,693	1,691
Not disclosed	145,534	153,031	119,593	11,933	13,593	10,976
Willamette Valley	164,473	170,440	136,147	13,492	15,286	12,667
Not disclosed	1,662	3,027	1,479	123	233	135
Coastal	1,662	3,027	1,479	123	233	135
Umatilla	-	18,663	17,350	-	1,419	1,464
Not disclosed	40,128	39,842	35,659	2,800	2,739	2,982
North Central	40,128	58,505	53,009	2,800	4,158	4,446
Not disclosed	-	-	1,543	-	-	120
Eastern	-	-	1,543	-	-	120
State total	206,263	231,972	192,178	16,415	19,677	17,368

r - revised, p - preliminary. 1/ Totals may not add due to rounding. A "-" indicates the data may not exist or may not be displayed due to confidentiality rules. The "not disclosed" values are the sum of all values hidden by the dashes and any county not listed. The Extension Economic Information Office uses different methods than USDA/NASS to set these estimates.

Source: Oregon Agricultural Information Network (OAIN), Extension Economic Information Office, Oregon State University

Sweet corn for processing: Production and value of sales, Oregon, 1998-2007



Source: Oregon Agricultural Information Network (OAIN), Extension Economic Information Office, Oregon State University

Sweet corn for processing: Acreage, yield, production, price and value of sales, Oregon, 1940-2007

Year	Acreage harvested <i>Acres</i>	Yield per acre <i>Tons</i>	Production <i>Tons</i>	Price per ton <i>Dollars</i>	Value of sales <i>1,000 dollars</i>
1940	1,500	3.3	5,000	14.00	70
1950	9,100	3.7	33,700	27.80	937
1960	21,500	5.0	106,400	23.90	2,543
1970	29,500	7.1	208,850	27.50	5,743
1980	33,700	8.7	292,500	62.30	18,224
1983	38,795	8.6	331,750	68.50	22,724
1984	42,000	8.7	365,400	71.10	25,980
1985	38,600	9.2	354,750	69.70	24,725
1986	34,900	9.2	322,450	66.61	21,477
1987	38,891	8.8	343,900	64.20	22,077
1988	38,500	9.2	353,450	71.30	25,200
1989	45,500	8.7	394,950	80.50	31,793
1990	47,200	8.4	396,450	85.51	33,899
1991	47,500	8.4	399,950	84.10	33,636
1992	43,300	9.0	391,450	81.39	31,862
1993	44,800	8.7	387,550	83.29	32,280
1994	47,300	9.1	431,850	82.50	35,628
1995	48,900	9.3	452,330	78.20	35,372
1996	48,300	9.1	438,100	84.10	36,843
1997	41,000	8.6	353,000	83.80	29,580
1998	37,300	8.4	311,920	83.69	26,104
1999	44,000	8.1	358,270	81.69	29,268
2000	35,700	8.6	306,650	80.38	24,647
2001	28,870	7.8	225,863	81.12	18,321
2002	28,250	8.1	227,726	79.09	18,010
2003	28,090	9.1	255,170	80.65	20,580
2004	28,060	8.4	236,508	84.80	20,057
2005r	20,690	10.0	206,263	79.58	16,415
2006r	23,990	9.7	231,972	84.82	19,677
2007p	19,350	9.9	192,178	90.37	17,368

r - revised, p - preliminary. The Extension Economic Information Office uses different methods than USDA/NASS to set these estimates. Source: Oregon Agricultural Information Network (OAIN), Extension Economic Information Office, Oregon State University