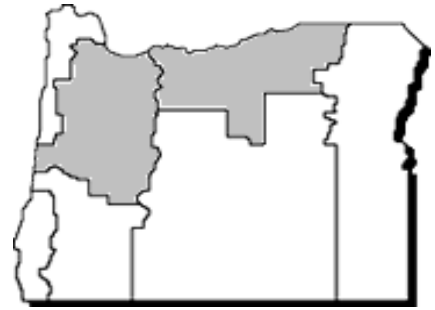


Commodity Data Sheet

Prunes & Plums



Commodity number-year: 5135-07*

Extension Economic Information Office
Oregon State University
219 Ballard Extension Hall
Corvallis, OR 97331-3601 (541) 737-1436

April 2008

Item and area	Unit	2003	2004	2005	2006	2007
Total production (fresh basis)						
Oregon	Tons	5,500	13,000	1,500	10,500	3,000
Idaho	Tons	2,500	4,000	2,000	2,000	1,800
Michigan	Tons	3,600	2,500	2,000	3,600	3,100
Washington	Tons	4,700	5,500	3,600	5,400	4,000
4-State total	Tons	16,300	25,000	9,100	21,500	11,900
Utilization of sales						
Oregon						
Fresh	Tons	1,500	3,000	1,200	2,500	1,800
Processed	Tons	2,600	4,500	300	6,000	1,200
Idaho ^{1/}						
Fresh & processed	Tons	2,480	3,920	1,950	1,900	1,720
Michigan						
Fresh	Tons	1,100	350	450	1,800	900
Processed	Tons	2,500	1,650	1,550	1,600	1,100
Washington ^{1/}						
Fresh & processed	Tons	4,700	5,500	3,600	5,400	4,000
Farm price						
Oregon						
Fresh sales	Dollars/ton	385.00	537.00	445.00	496.00	501.00
Processed sales	Dollars/ton	206.00	228.00	300.00	274.00	302.00
All sales	Dollars/ton	272.00	352.00	416.00	339.00	421.00
Idaho ^{1/}						
All sales	Dollars/ton	518.00	613.00	999.00	887.00	709.00
Michigan						
Fresh sales	Dollars/ton	480.00	769.00	760.00	730.00	765.00
Processed sales	Dollars/ton	300.00	264.00	245.00	249.00	173.00
All sales	Dollars/ton	355.00	353.00	361.00	504.00	440.00
Washington ^{1/}						
All sales	Dollars/ton	337.00	193.00	498.00	443.00	403.00
4-State total						
Fresh sales	Dollars/ton	446.00	468.00	759.00	639.00	619.00
Processed sales	Dollars/ton	254.00	228.00	257.00	267.00	214.00
All sales	Dollars/ton	353.00	360.00	562.00	452.00	464.00
California (dried basis)						
Total production	Tons	181,000	49,000	97,000	198,000	81,000
Farm price, dried	Dollars/ton	772.00	1,500.00	1,470.00	1,390.00	1,450.00

*Shaded areas of map represent the major areas of production for this commodity. 1/ Fresh and processed not published separately to avoid disclosure of individual operations.

Source: USDA/NASS (National Agricultural Statistics Service)

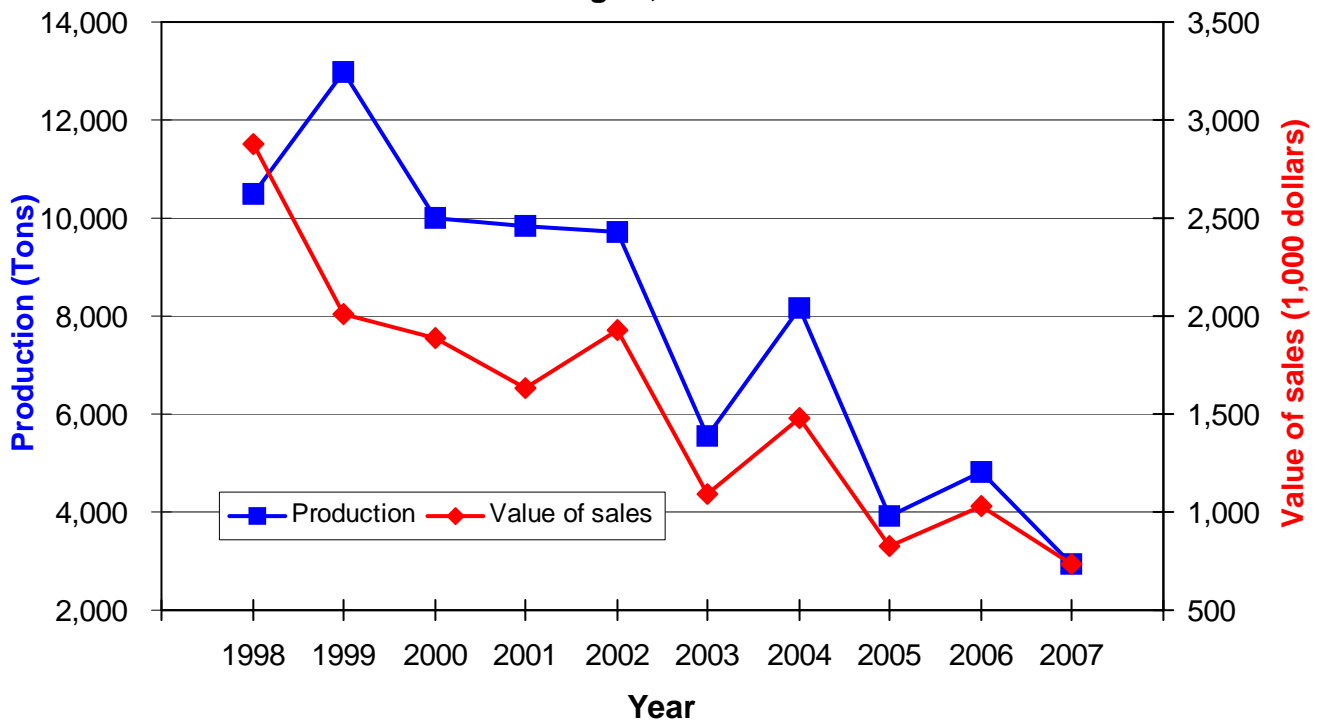
Electronic access to this publication is available at: <http://oregonstate.edu/oain/>. Click the Commodity Data Sheets button.

Prunes & plums: Total production and value of sales, by county, Oregon, 2005-2007

County	Total production			Value of sales ^{1/}		
	2005r	2006r	2007p	2005r	2006r	2007p
	Tons	Tons	Tons	1,000 dollars	1,000 dollars	1,000 dollars
Clackamas	18	34	12	3	6	4
Douglas	611	540	540	137	122	138
Lane	4	13	24	2	6	9
Linn	2	9	5	1	4	2
Marion	90	170	60	18	32	16
Multnomah	7	13	4	1	2	1
Polk	528	960	336	106	182	101
Umatilla	1,500	1,450	1,350	300	319	243
Washington	410	779	246	82	152	74
Yamhill	432	720	252	86	137	76
Not disclosed	325	112	112	89	68	68
State total	3,927	4,800	2,941	825	1,030	732

r - revised, p - preliminary. 1/ Totals may not add due to rounding. The "not disclosed" values are the sum of any county not listed. The Extension Economic Information Office uses different methods than USDA/NASS to set these estimates.
Source: Oregon Agricultural Information Network (OAIN), Extension Economic Information Office, Oregon State University

Prunes and plums: Production and value of sales, Oregon, 1998-2007



Source: Oregon Agricultural Information Network (OAIN), Extension Economic Information Office, Oregon State University