

Oregon bay crab identification *

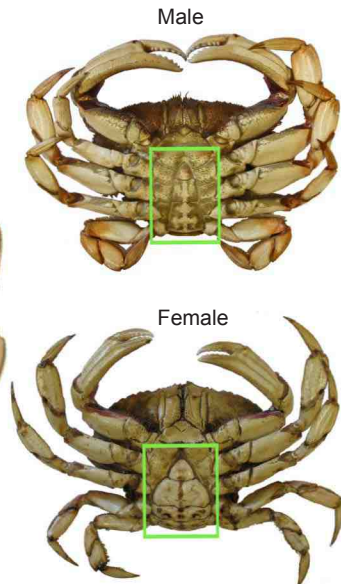
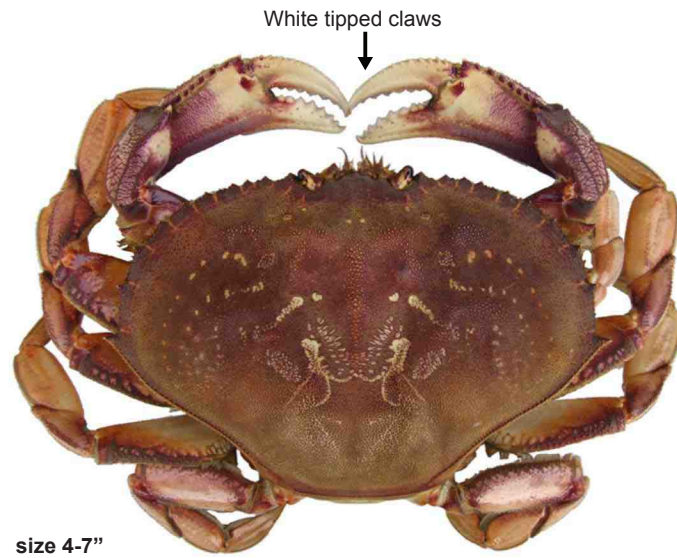
Commonly harvested bay crabs

Dungeness crab *Cancer magister*

- Most legal size Dungeness crabs are 4 years old.
- The most common and valuable crab of Oregon estuaries.

Identification:

- Dungeness crabs have white-tipped claws and 10 spines on each side of carapace.
- Dungeness are typically brown to purple; however, like other crabs, color can be variable.
- Abdominal flap of males is long and narrow, in females it is short and rounded.

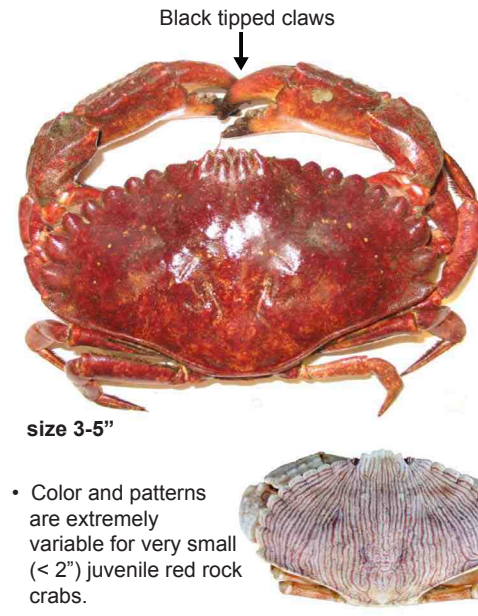


Red rock crab *Cancer productus*

- Red rock crabs are **NATIVE** to Oregon.
- Often found near rocks and other structure.

Identification:

- Red rock crabs have black-tipped claws.
- Carapace is fan shaped.



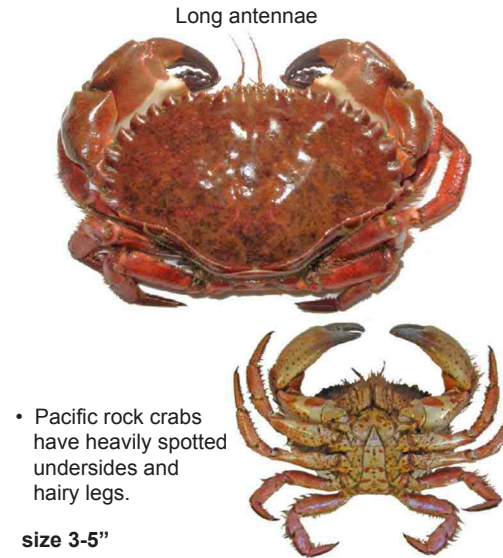
Other native crabs found in crab gear

Pacific rock crab *Cancer antennarius*

- Also known as Brown or Spot-bellied crab.
- More common in ocean than in estuaries.

Identification:

- Similar and closely related to red rock crab, but more brown in color, with spots covering underside, and with more hair on legs.
- Antennae much larger than in red rock crab.



Northern kelp crab *Pugettia producta*

- A large spider crab often found in estuaries near pilings, rocks, and other structure.

Identification:

- Long legs and shield shaped carapace.
- Disproportionately large claws in mature males.
- Color can vary from green to brown to red, underside generally has some deep red color.
- Can grow very large.



Other native bay crabs

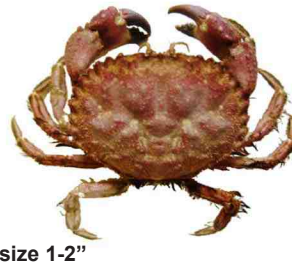
Slender crab *Cancer gracilis*

- Similar to Dungeness, but with no spines on upper claw, and is widest at 9th spine.
- Far less common than Dungeness crab.



Pygmy rock crab *Cancer oregonensis*

- Also known as Oregon cancer crab.
- Often found near docks and rocky intertidal areas.
- Round carapace, hairy legs, and black tipped claws.



Graceful kelp crab *Pugettia gracilis*

- A small spider crab occasionally found crawling on crab gear.
- Claw tips are usually orange.



Pea crab *Pinnixa sp.*

- Several species exist in Oregon, and can be found inside a variety of bivalves such as gaper clams.



Green crab *Carcinus maenas*

- Native to Europe.
- Occasionally found in Oregon estuaries.
- Young Dungeness and shore crabs are often misidentified as green crab due to color similarities.

Identification:

- 5 spines on each side of carapace.
- 3 bumps between eyes.
- Color most often dark green.

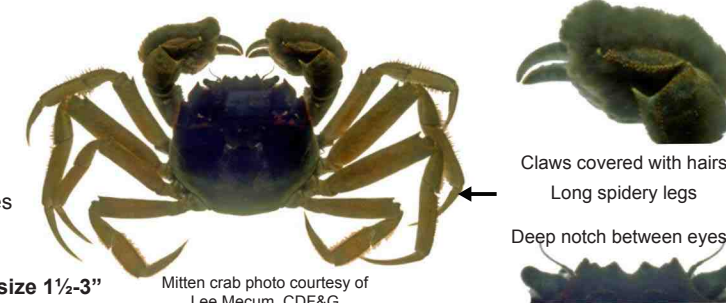


Harris mud crab *Rhithropanopeus harrissii*

- Native to southeast coast of North America.
- Found in brackish waters of large estuarine systems.

Identification:

- Unequal size claws characteristic of this species.
- 4 spines on each side of carapace, no notch between eyes.



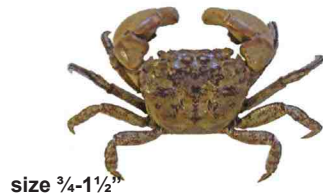
Purple shore crab *Hemigrapsus nudus*

- Spotted claws, hairless legs.



Yellow shore crab *Hemigrapsus oregonensis*

- Yellow to green color, hairy legs.



Striped shore crab *Pachygrapsus crassipes*

- Horizontal lines across carapace.



Black clawed crab *Lophopanopeus bellus*

- Large, black tipped claws.
- Plays dead when handled.



Chinese mitten crab *Eriocheir sinensis*

- Native to China.
- **NOT found in Oregon as of 2007.**

Identification:

- White tipped claws with dense patches of hair.
- 4 spines on each side of carapace.
- Notch between eyes.

** If a non-native crab is found, please turn it in to ODFW with information on date and location.

* Color can be highly variable in crabs and should not be used solely for identification. All sizes are approximate for average adult carapace width (inches).