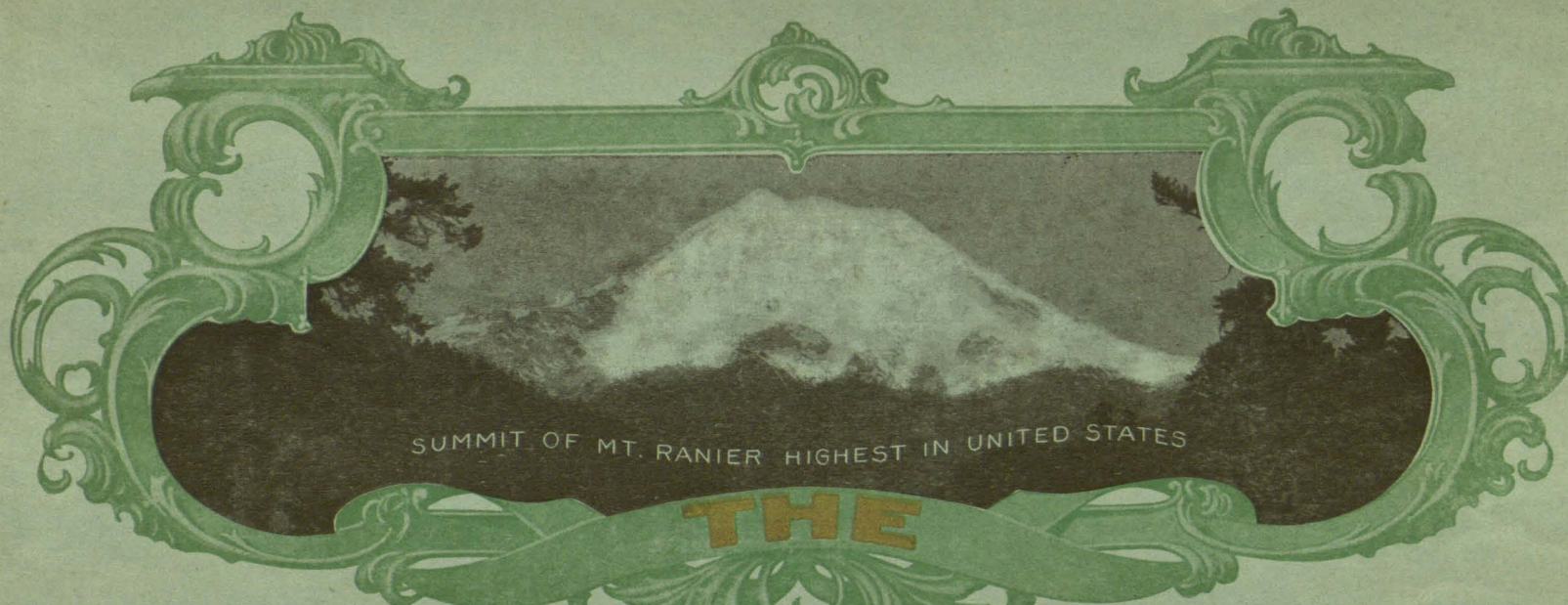




12 0143182273



SUMMIT OF MT. RANIER HIGHEST IN UNITED STATES

THE

CITY OF SEATTLE

ILLUSTRATED



SCHOONERS IN SNUG HARBOR NEAR SEATTLE—EAGLE HARBOR, BAINBRIDGE ISLAND.

Seattle, the Exposition City.

THE RECENT growth and progress of Seattle is marvelous. It has only been possible by the swarming of the people of the East to grasp the opportunities in a new and opening quarter of the globe, a portion of the earth which includes not only Alaska and the Northland, but the awakening countries of the Orient and the Northern Pacific. That a great chapter of the world's history is beginning is recognized by the people of the City, who through a wise policy of municipal government, are designing a city capable of becoming one of the world's great centers of population. That Seattle is to be the radiating American point for this new chapter of Pacific history is evident. Alike favorably situated geographically, and surrounded by unnumbered material resources, the City is also favored with beautiful scenery on land and sea, and a climate comfortable and equable throughout the year. Nowhere are there finer home surroundings, the topography of the City lending charming hills and vales, with beautiful mountains and marine views on every hand.

Rising from the shores of Puget Sound the City sits, queen-like, upon a succession of sloping hills, the main avenues paralleling the water front, with streets intersecting at right angles. To a large extent the same layout is observed throughout the City, yet there are several arteries deviating from the rule, caused by lakes within the city limits, or by steep ascents. The visitor is at once struck with the metropolitan appearance of the City's centre and the bustle of life there seen.

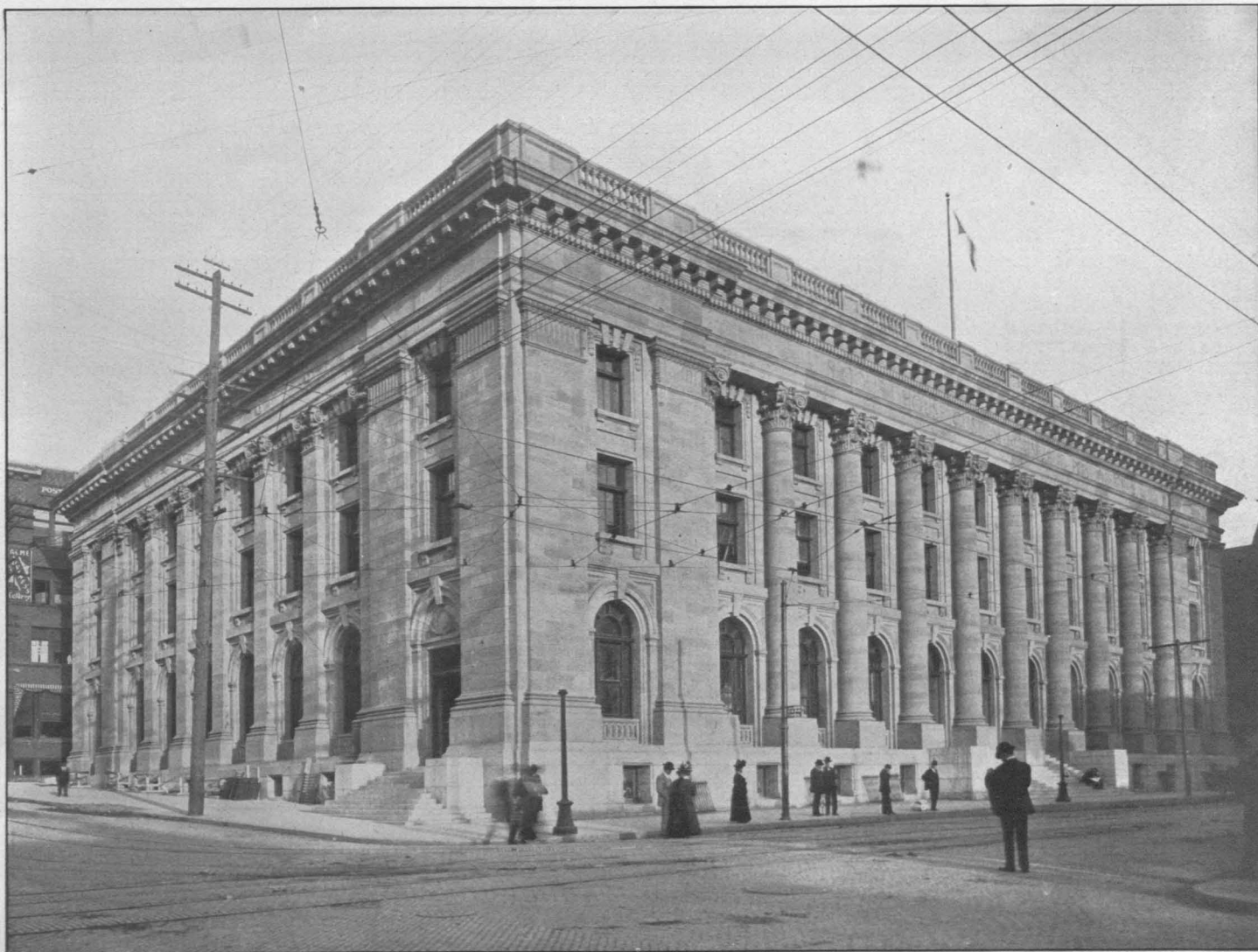
The resources behind Seattle, which stand out prominently, are its commercial and manufacturing interests, together with the agricultural, fishing and mining industries of the Northwestern States and Alaska and the great lumbering industries of Western Washington. While the ocean commerce through Seattle amounts to \$100,000,000 annually, her local trade with thriving cities and towns on Puget Sound is sufficient to build up a large city. Steamboats plying from the docks stop at two hundred landings daily, carrying supplies and passengers. The City owns its water system and electric lighting plant. The public school system ranks among the best in the country, and Washington University is located here. The City has a fine public library with several branches, and there are two hundred and twenty-five churches and religious societies. The public parks are many and beautiful, natural conditions being largely preserved, and an elaborate and extensive parkway system is being evolved to encompass the City. Fort Lawton, a United States military post, is within the City, while the Puget Sound Navy Yard is located across the Sound an hour's sail away. In the waters of Puget Sound adjacent to the Navy Yard the entire navy of the United States may ride in safety with ample anchorage.

PUBLISHED BY THE E. P. CHARLTON & CO., SEATTLE, WASH.



PIONEER PLACE AND THE TOTEM POLE

Pioneer Place is a spot which once seen will always be remembered. Historically it is an old landmark from which all distances are computed. It is also distinctly situated with surroundings peculiar to itself. The Totem Pole is not the least interesting feature, being sixty feet high and was brought from an Alaskan village, where it is said to have stood over a century.



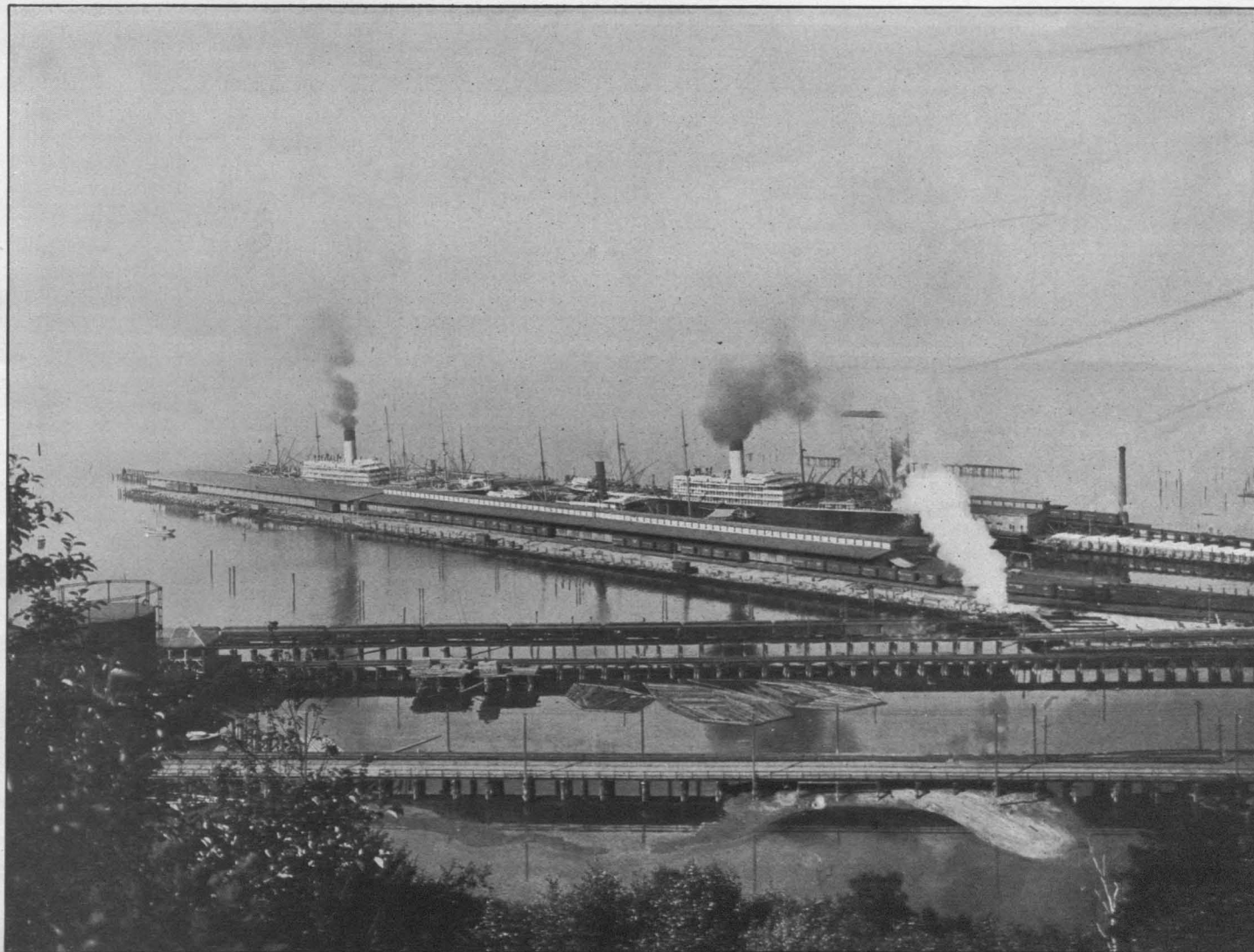
NEW FEDERAL BUILDING—POST OFFICE AND CUSTOM HOUSE

This new structure occupies a corner block in the newer business section at Union Street and Third Avenue. A handsome commodious building, it is a recent example of the Government's efforts in combining utility and correct lines of beauty in public buildings.



THE UNION PASSENGER STATION

This modern up-to-date passenger station is a pleasing feature as one enters the City by the railways. It was built, architecturally, to fit its location, the "car shed" front being much more impressive than the King street front. Its beautiful tower is designed after the Campanile in Venice, is 240 feet high, and contains an illuminated electric clock.



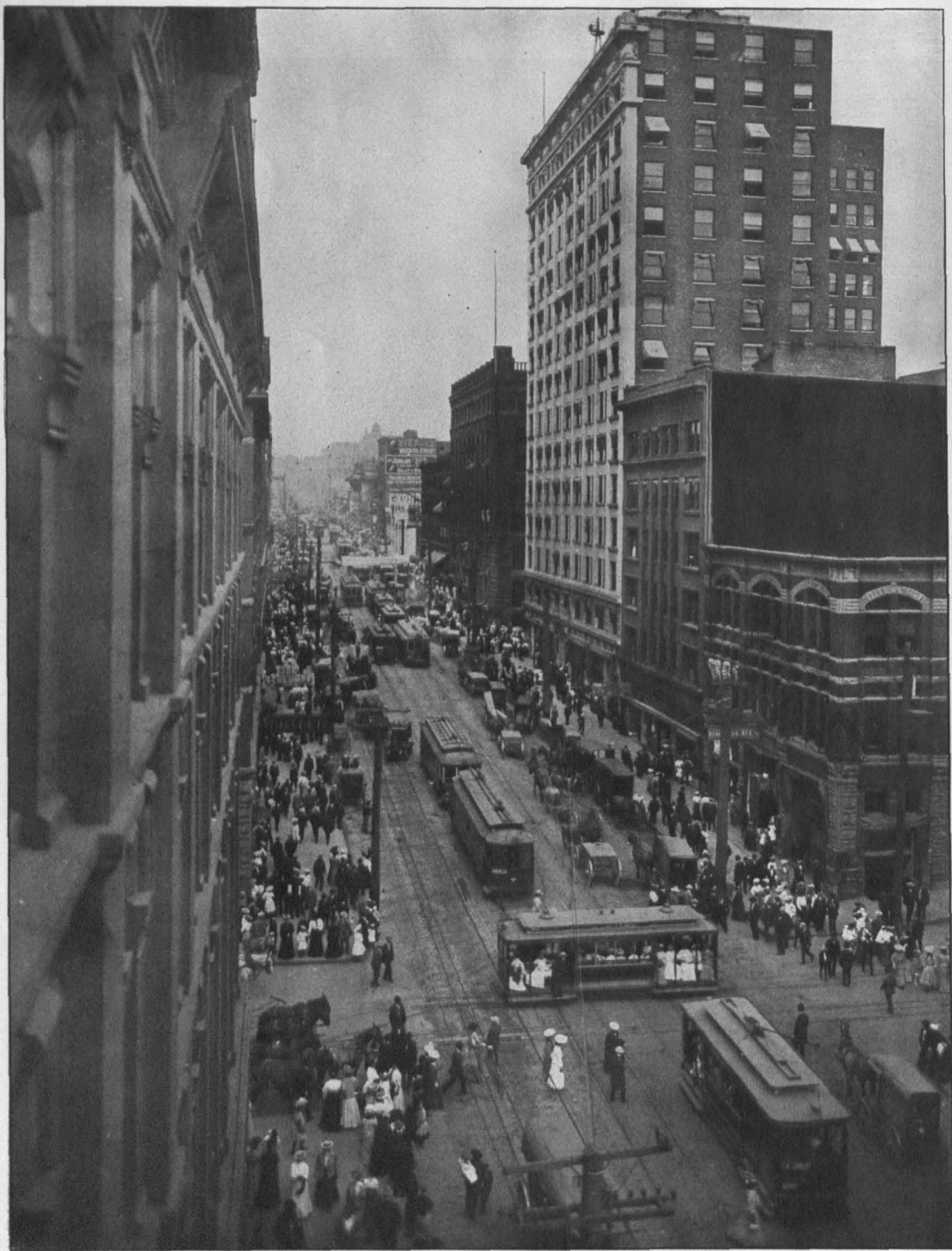
THE GREAT NORTHERN DOCKS

To and from these docks ply the great freight and passenger steamers engaged in the Oriental trade. The steamers which land here regularly are famous for their immense carrying capacity.



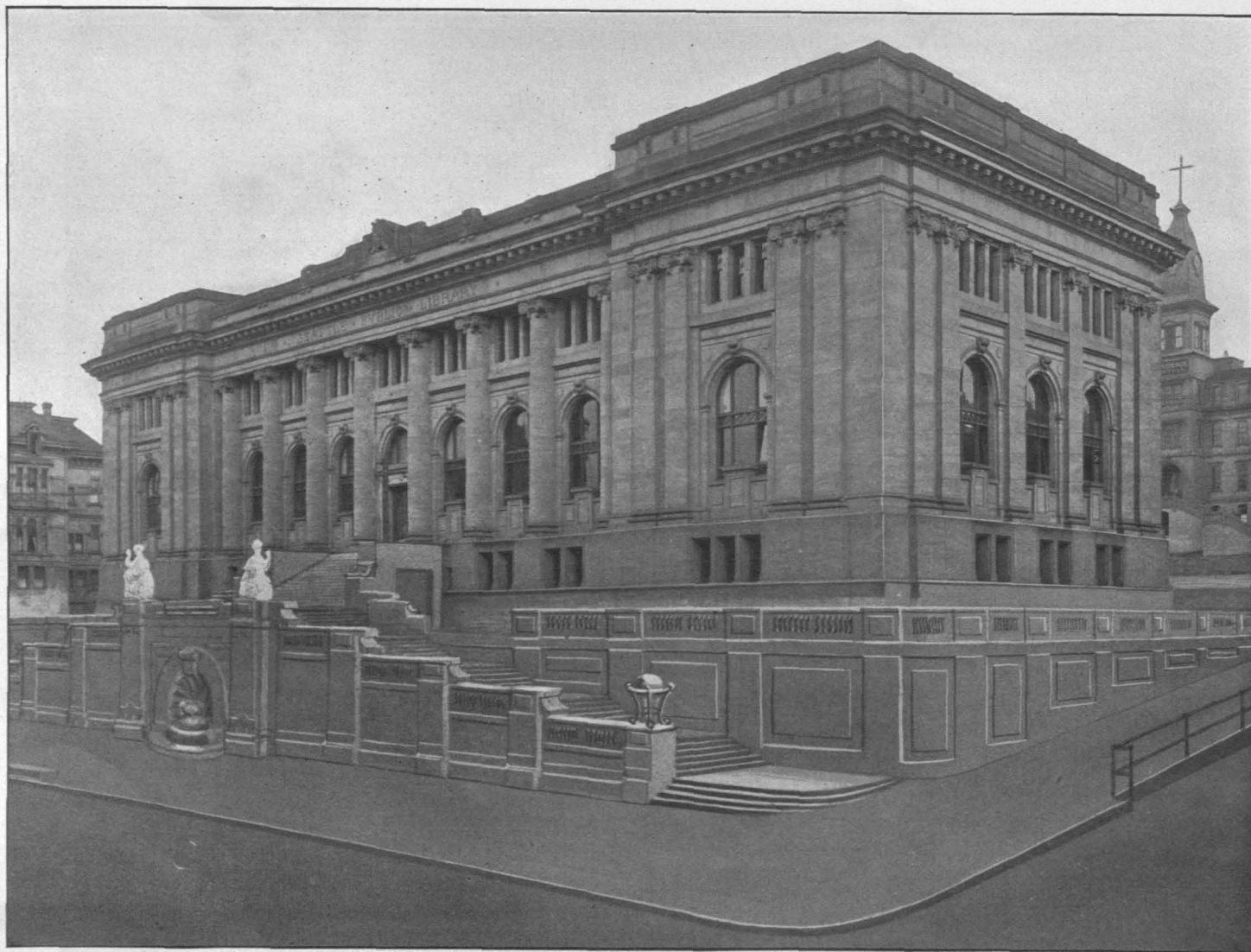
CHERRY STREET FROM FIRST AVENUE

The view shows Cherry Street where it is a busy thoroughfare in the financial section of the City, where money changes hands and fortunes are made. | It starts from First Avenue near Pioneer Square.



SECOND AVENUE, NORTH FROM YESLER WAY

Second Avenue is the principal retail and fashionable business street of the City. Handsome sky-scrapers are rapidly supplanting the earlier structures. Its walks are thronged daily with a cosmopolitan people. The Indians who are permitted a few feet at street corners to sell their scant stock of bows and arrows and baskets, occupying this last bit of their "original domain," are reminders of the rapid changes made by fleeting time.



THE PUBLIC LIBRARY

To the foundation of the Public Library Andrew Carnegie gave \$222,000, and the City devoted \$100,000 for its site and \$100,000 for its equipment. In 1908, the circulation, for home reading, was 560,000 volumes. There are five branch libraries in different sections of the City.



SNOQUALMIE FALLS

This beautiful waterfall, with its picturesque setting, is twenty-eight miles east of Seattle and is reached by a branch of the Northern Pacific Railroad. It has a fall of two hundred and sixty-eight feet and set with dark evergreens, is an entrancing sight. Beneath the falls are dynamos generating 100,000 horse power supplying Seattle and other communities electricity.



GOVERNMENT ROAD THROUGH THE TIMBER TO MT. RAINIER

The Government is constructing a road towards the mountain that the people may have free access to the scenes of grandeur that surround Mt. Rainier.



MT. RAINIER

From Seattle two wonderfully beautiful mountain views are to be seen, the Olympic Range across Puget Sound far away towards the Pacific, and Mt. Rainier away inland, both objects appearing but a few miles distant. Rainier is the highest mountain in the United States, 14,526 feet. Its forests, rivers, lakes, canons, glaciers and snowy slopes are a fascination for tourists and mountain climbers.



THE VERY SUMMIT OF MT. RAINIER



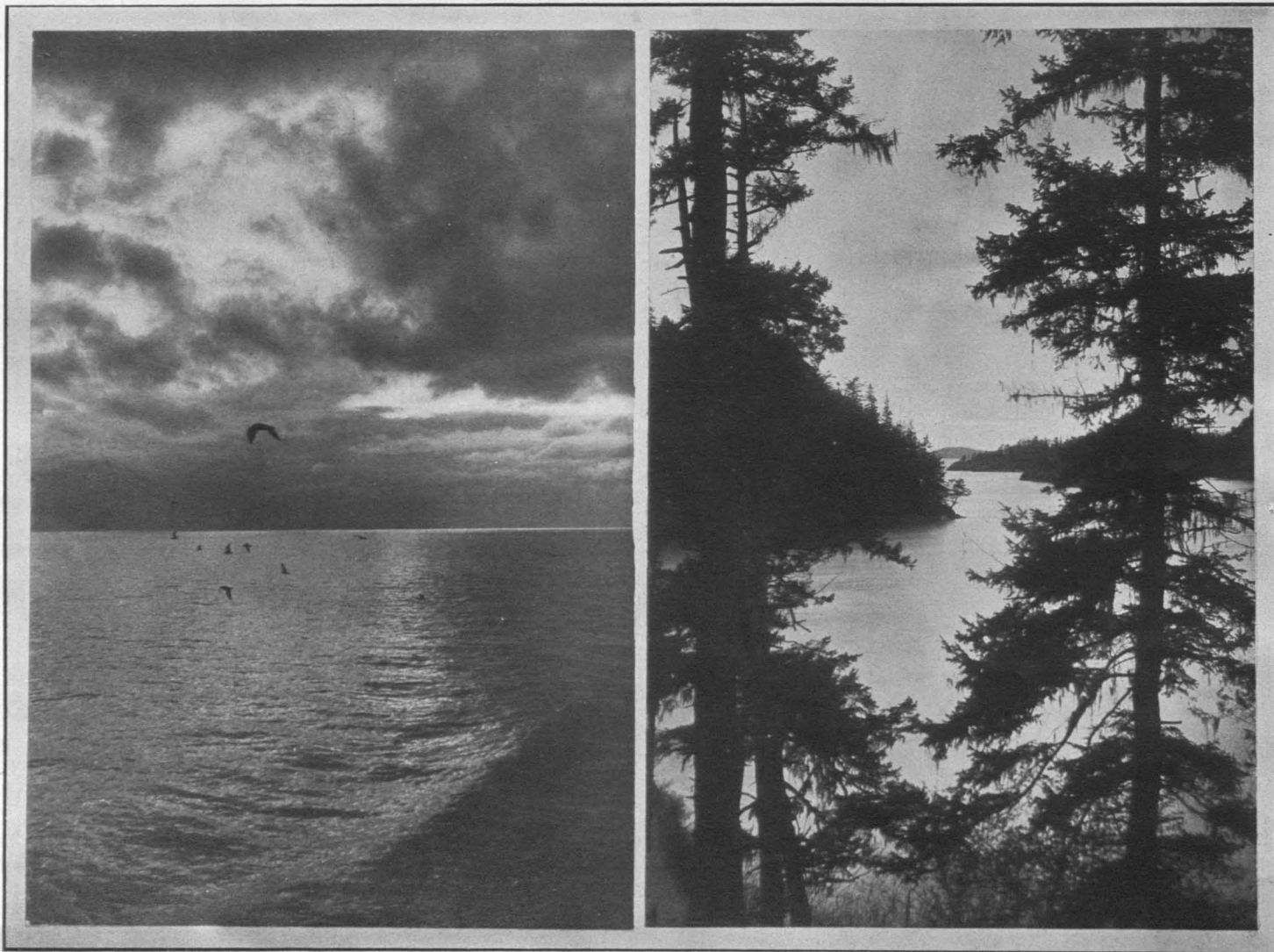
SNOWY SOURCE OF PARADISE RIVER

Summer or winter it is only a matter of quantity, for Mt. Rainier is always snow-clad, glistening in the sunlight as a mountain of burnished silver, and by moonlight mantled with silvery shades. Where Paradise Glacier meets the "timber line," and the melting process begins, there is the snowy source of the beautiful Paradise River.



ST. JAMES' CATHEDRAL—ROMAN CATHOLIC

Occupying, with the Bishop's residence, an entire city block upon "First Hill," the Cathedral is one of the most attractive and imposing structures anywhere to be found. For many miles across Puget Sound its towers are seen pointing heavenward, while near at hand it is most impressive. Its cost was more than a half million dollars; its erection was completed in 1907.



SUNSET ON PUGET SOUND

DECEPTION PASS

Not alone the traveled and cultured appreciate the scenery of Puget Sound. There is not a fisherman upon its waters, nor a lumberman in the forests upon its shores, so prosaic or stolid that he does not observe and love its peculiarly attractive scenery.

Thousands there are who could not be wooed from these daily scenes.



THE OLYMPICS FROM SEATTLE

Frequently, when atmospheric conditions are favorable, the Olympic Mountains form a magnificent view, looking across Puget Sound from Seattle.

They seem wonderfully near although an hundred miles away. Mt. Constance is the high point shown in our engraving.

PHOTO.—COPYRIGHT, 1907, BY ROMANS PHOTO. CO.



FROM PIONEER SQUARE TO CHERRY STREET

East side of First Avenue from Pioneer Square to Cherry Street, in the busiest business section of the City, where real estate is held at highest prices.



UPPER SECOND AVENUE, THE NEW BUSINESS CENTER

The fashionable emporiums of trade and department stores are moving towards upper Second Avenue, as the City expands and increases in inhabitants.



THE PUBLIC MARKET PLACE

At the Public Market the people of Seattle, as consumers, meet the ranchmen, the producers, and buy at first hand. An interesting hour can be spent here watching the sights, especially on Saturday mornings.



BOUND FOR ALASKA

The departure of steamers for Alaska, that land of golden opportunity and adventure, is always an interesting event on the water front. In the picture we have three ships about to depart with passengers and freight for "The North."