



## THE VALLEY LIBRARY COURTYARD QUOTATIONS

See page 6

*"Life is an unfoldment,  
and the further we travel the more  
truth we can comprehend."*



## LIBRARIES

VOLUME 13  
WINTER

NUMBER 1  
1998

### IN THIS ISSUE:

FROM THE UNIVERSITY  
LIBRARIAN ..... 2

CONSTRUCTION UPDATE ..... 4

THE VALLEY LIBRARY  
COURTYARD QUOTATIONS ..... 6

MALAMUD COLLECTION ..... 8

VOLUNTEERS NEEDED ..... 11

PRIVATE DOLLARS,  
PUBLIC TREASURES ..... 12





## OREGON STATE UNIVERSITY LIBRARIES

The Valley Library,  
Main Campus, Corvallis

Marilyn Potts Guin Library,  
Hatfield Marine Science Center,  
Newport

### THE MESSENGER

OSU Libraries  
Oregon State University  
121 The Valley Library  
Corvallis, OR 97331-4501  
(541) 737-2438

Karyle S. Butcher,  
*University Librarian*

Marcia Griffin, *Editor*

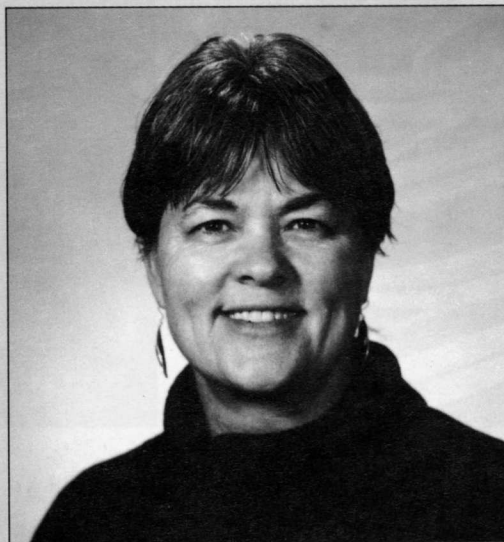
Kim Thompson, *Assistant Editor*

*The Messenger* is published  
twice each year.



The beginning of a new year is a time to reflect on the past and plan for the future. I am filled with tremendous gratitude for all of the people who have worked so long and hard to make the OSU Libraries expansion project a success. A stunning new library building is a celebration for us all. Even though we know the digital age is upon us and it is thrilling...we continue to relish the feel of a book, the look of a printed page, the sense of place provided by a library.

Reflection also causes me to celebrate the enthusiasm, goodwill and strong service ethic of the OSU Libraries' staff who have embraced the University's goal of recruiting and retaining students. Because we believe that early success in finding and evaluating information increases the ability of students to be lifelong learners, we view recruiting efforts as wonderful opportunities to demonstrate library services.



Karyle S. Butcher

Our efforts to retain students run the gamut from proctoring exams to explaining how to operate the compact shelving units. In addition, librarians are increasingly using the Web to provide information. A useful Web page is "Help from Reference Librarians" which provides 24-hour access to reference help along with tips for completing class assignments. Each librarian has office hours to provide individual reference consultation and support to students. While all library workers are committed to providing class tours and help at the public services' desk, those librarians who serve as liaisons to OSU's Cultural Centers are particularly active in insuring that students of diversity find OSU Libraries a welcoming and helpful environment.

Finally, special efforts have been made to assist all patrons during the construction project. An "Ask Me" desk was established to provide directional help and information. As always, we continue to solicit suggestions to improve library experiences from our library users.

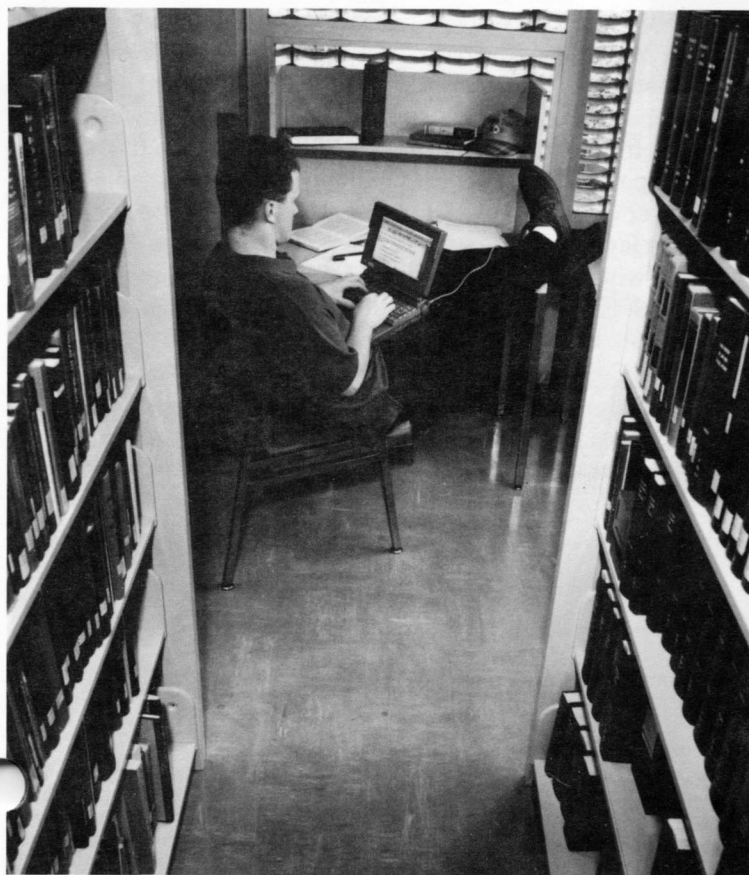
As I plan for 1998, my goal is to insure that OSU Libraries will have strong and growing collections, that access to information is straightforward and

that we continue our commitment to excellent service. I look forward to making this goal a reality.

Karyle S. Butcher  
*University Librarian*

---

BECAUSE WE BELIEVE THAT  
EARLY SUCCESS IN FINDING AND  
EVALUATING INFORMATION  
INCREASES THE ABILITY OF  
STUDENTS TO BE LIFELONG  
LEARNERS, WE VIEW RECRUITING  
EFFORTS AS WONDERFUL  
OPPORTUNITIES TO DEMON-  
STRATE LIBRARY SERVICES.



### WEB ACCESS TO OREGON LIBRARIES' CATALOG TO BECOME REALITY

**A**n innovative partnership between The Valley Library at Oregon State University and the Oregon State Library in Salem will begin to build a virtual library catalog for all of Oregon.

A task force of librarians has been working for the past two years to plan the ORION Project. In September, the State Library made a \$139,255 grant to The Valley Library at OSU to be the host site for the project. OSU, in turn, has signed an agreement with CPS Inc., to install the software to run ORION at OSU.

The Universal Resource Sharing Application (URSA) software from CPS Inc., has

been used successfully in the North Bay Cooperative Library System in California. Library consortia in Maryland, New York, and Pennsylvania also plan to use the new software.

The ORION Project will make the holdings of six major Oregon libraries searchable on the World Wide Web early this year. Within a few years, plans are to have all major Oregon library catalogs included in the ORION system.

In addition to The Valley Library and the State Library in Salem, libraries at Portland State University, Oregon Health Sciences University, Willamette University, and Portland Community College will be the initial test sites for ORION.

---

**THE ORION PROJECT WILL MAKE  
THE HOLDINGS OF SIX MAJOR  
OREGON LIBRARIES SEARCHABLE  
ON THE WORLD WIDE WEB EARLY  
THIS YEAR.**





## CONSTRUCTION TO BE COMPLETE BY DECEMBER 1998

**A**s work continues non-stop on the outside of the new Valley Library on the OSU campus, interior labor is divided between finishing work on the new structure and demolition and remodeling of the old structure.

Outside, new windows and trim have been installed. The rotunda's exterior now has a more finished look. Windows and trim are being installed, as

well as exterior brick work. Concrete walks and covered bicycle parking structures are complete.

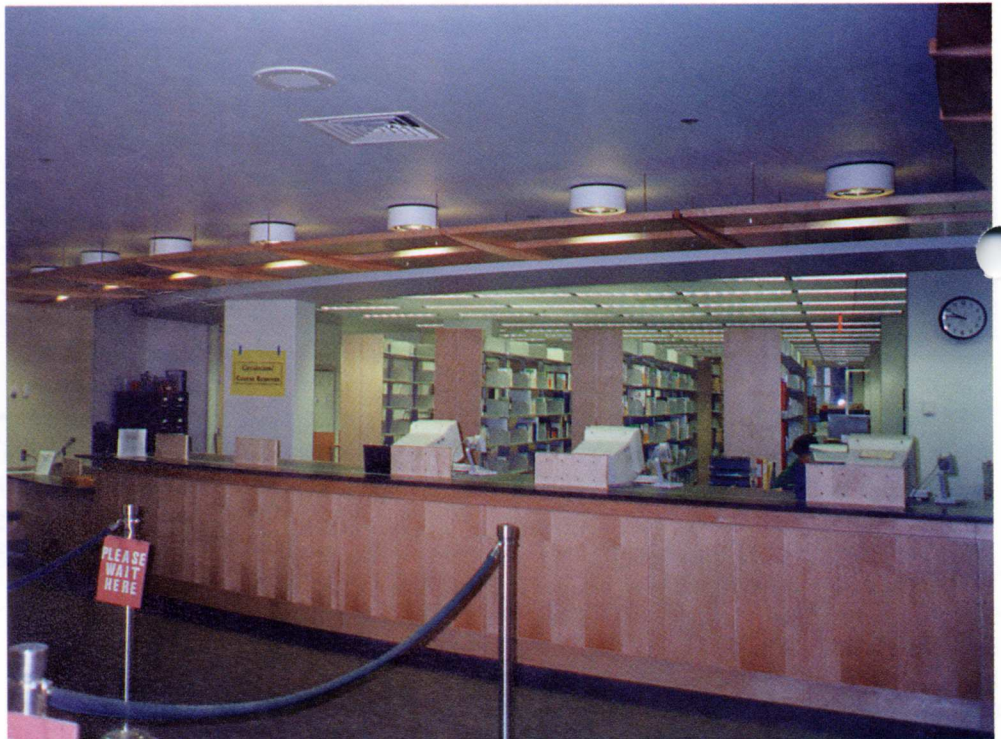
At the front entrance, an immense paving project entailed several months' work for craftsmen laying granite pavers inscribed with special quotations which have relevance to Oregon State University and the people it serves. When fully completed, the courtyard at the north entrance to The Valley Library will be a mosaic of

ideas spanning many decades, a legacy of those whose lives and words have had an impact on the Pacific Northwest.

In the interior of the new Library, stunning maple paneling has been installed on all floors of the new addition, and the lighting structure has been installed in the avenues. Beautiful terrazzo floors grace the floors of the six avenues connecting the old structure with the new. The new maple circulation desk curves through the



Above: Lighting structure on second floor avenue  
Right: Circulation desk







Left: Window trim being applied to rotunda

Inset: Reference books in rotunda

spacious area to the west of the impressive, two-story vestibule of the Library, giving patrons a taste of the beauty and grand scale The Valley Library will have when completed.

Many of the library's staff were moved into the new addition last fall, with most of the service areas grouped together on the third floor, awaiting their new spaces when the renovation is complete. Reference books have found a temporary home on the second floor of the rotunda, as work continues on the upper floors of the area. On the first floor of the rotunda, the coffee shop, Java Stop II, is a huge success with students and staff

alike as a quiet study and meeting spot. Demolition in the old building is in full swing, with ductwork, electrical conduit and wall framing being installed on the second and third floors. The old stairwell has been demolished to allow for new restrooms. Most of the library's collections and services remaining in the old building were moved to temporary locations in the new building during the holiday break.

The last remaining occupants of the old structure were moved into their new or temporary quarters in February.

Remodeling of the old second and third floors is expected to be completed in April, with final completion date for the entire Valley Library now scheduled for late December of this year.

#### TIMELINE FOR RENOVATION

##### MARCH 25

Third floor complete

##### APRIL 17

Second floor complete

##### MAY 21

First floor complete

##### AUGUST 14

Fourth floor complete

##### DECEMBER 18

Fifth and sixth floors complete





## THE VALLEY LIBRARY COURTYARD QUOTATIONS

BY LES RISSE

*"Life is an unfoldment,  
and the further we travel  
the more truth we can comprehend."*

**T**his quotation from Hypatia, the Greek-Egyptian philosopher, mathematician, and teacher (ca. 400 A.D.), epitomizes a wonderful project first envisioned by Mel George, recently retired University Librarian. In the fall of 1996, I was asked to chair The Valley Library Courtyard Quotations committee, in conjunction with the Library's \$47 million expansion and renovation.

As the project unfolded, our committee grew to include the following library aficionados: Karyle Butcher, University Librarian; Cliff Dalton, Director of Development for Libraries and Information Services; Wilbert Gamble, Professor of Biochemistry and Biophysics; Linc Kesler, Associate Professor of English; Michael Kinch, Reference Librarian; Kathleen Moore, Chair of the Department of Philosophy; and William Robbins, Associate Dean of

the College of Liberal Arts, and Distinguished Professor of History.

The charge to this well-qualified committee was to solicit and select a set of quotations to be engraved in granite in the courtyard area at the new north entrance to The Valley Library, a lovely plaza given in memory of Lora Laslett Kelley by her family. With the focus on the celebration and evolution of ideas as well as their impact on society

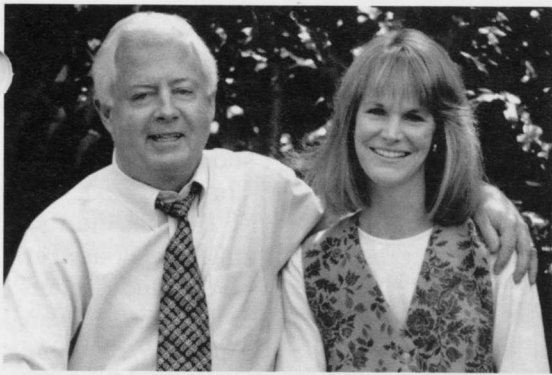
*I sit in your crowded classrooms  
and learn how to read about dick, jane and spot  
but I remember how to get a deer  
I remember how to do beadwork  
I remember how to fish  
I remember the stories told by the old  
but spot keeps showing up  
and my report card is bad.*

—ED EDMO



Quotations being installed in the library courtyard





Les Risser (right) wife of OSU President,  
Paul G. Risser

the committee determined that the quotations should represent a variety of subject areas, historical periods, and ethnic groups and should have some special relevance to Oregon State University or the Pacific Northwest.

Over 400 quotations were submitted by students, faculty, staff, and alumni. The committee worked diligently and thoughtfully to select quotations which would create a mosaic of ideas, spanning the

many decades of learning at Oregon State University. The final selection — 43 quotations in all — including Hypatia's words above, are now being installed in the courtyard area and will be bordered by stone benches and landscaping when the building construction is complete.

Authors range from Hypatia to Mark Hatfield, from Linus Pauling to Martin Luther King, Jr. and Chief Tommy Thompson. Ideas reflect such topics as the love of learning, the life of migrant farm workers, political integrity, civil liberties, the quest for world peace and human dignity, and

an appreciation for the environment of the Pacific Northwest.

Thanks to the efforts of Michael Kinch, Reference Librarian, and Amy Charron of University Publications, a brochure is now available at The Valley Library which lists the 43 quotations, along with biographical information about each author.

The next time you visit The Valley Library, I encourage you to walk around the courtyard, take time to reflect on the thoughts and ideas represented in granite, and appreciate the rich diversity the language represents.

Life, indeed, is an unfoldment and we hope you will enjoy your travels through this celebratory unfoldment of ideas.

THE QUOTATIONS REPRESENT A VARIETY OF SUBJECT AREAS, HISTORICAL PERIODS, AND ETHNIC GROUPS AND HAVE SOME SPECIAL RELEVANCE TO OREGON STATE UNIVERSITY OR THE PACIFIC NORTHWEST.

*When one does look,  
looks up at the grand trees growing almost to the sky,  
one does always have longings to pray.*

—OPAL WHITELEY

*Heroes are not giant statues framed against a red sky.  
They are people who say: this is my community, and it's  
my responsibility to make it better.*

—TOM LAWSON MCCALL

*Keep hope.  
What you see is not chaos shaking a world apart  
permanently; it is only change.  
Disorder follows order.*

—H. L. DAVIS



## SPECIAL COLLECTIONS ACQUIRES MALAMUD COLLECTION

MALAMUD'S BOOK, "A NEW LIFE" IS SET IN CASCADIA COLLEGE, SAID TO BE A CARICATURE OF OREGON STATE COLLEGE AND CORVALLIS IN THE LATE 50'S AND EARLY 60'S.

The Valley Library's Special Collections has recently acquired a collection of 179 foreign language editions of Bernard Malamud's literary works, all from Malamud's personal library.

Bernard Malamud is considered one of the century's most significant American novelists and writers of short stories. His novel, "The Fixer," won the Pulitzer Prize, as well as one of the two National Book Awards he received during his lifetime. "The Assistant," "The Fixer," "The Magic Barrel," "A New Life," "The Tenants" and "The Natural" are among the titles now housed in the collection at OSU. Thirty of these books have been signed by the author himself.

Malamud was on the faculty at Oregon State College (now OSU), arriving in Corvallis in 1949. He taught English Composition for 12 years before leaving to teach at Harvard.



Bernard Malamud, ca. 1960 (courtesy OSU Archives)

Malamud wrote three of his novels, "The Natural," "The Assistant," and "A New Life" while at OSU, as well as a collection of short stories entitled, "The Magic Barrel." It was this short story collection which garnered him another National Book Award, and is probably one of Malamud's best-known works.

Malamud's book, "A New Life," which he wrote in 1961, is set in Cascadia College, said to be a caricature of Oregon State College and Corvallis in the late 50's and early 60's. His later book, "The Fixer," is loosely based on "Jim the Fixer," a local character many Corvallis natives will remem-

ber from his small shop in downtown Corvallis.

The Malamud collection housed at OSU includes letters to his friend, Sylvan Karchmer, describing in detail Malamud's thoughts and feelings about working at Oregon Agricultural College while writing "A New Life."

The new collection of Malamud's books will be added to a Malamud transcript collection already housed in the library, and is expected to be a primary source of interest for researchers studying Malamud's career.

A passage from Malamud's book, "A

*New Life*," which he wrote while at OSU, was selected to be inscribed in granite outside the front doors of the new Valley Library. Even now, 36 years later, many will say it describes a typical winter day in Corvallis.

*"Levin walked in the cold rain, the wettest, dreariest he had ever been in. The town was tight around the shoulders, the wet streets long and dark, streetlights obscure at corners. A man could drown mid-block and nobody would know."*





**S**eptember and October of 1997 were exciting months for us at The Valley Library, especially for those in Library Instruction. In September, the second and third floors of the old Library were sealed off for construction and most of the library public services moved into the new library addition. During this time, we also switched many of our electronic subject databases such as *Agricola* and *Book Review Digest* from a networked CD-Rom access to internet access through the World Wide Web.

We realized that these two events, combined with continuing building construction, would present a challenge for our new and returning library users in the fall and that we needed a plan. To help library users become familiar with the new building and services, we developed an "ASK ME" desk and scheduled drop-in library tours for the first four weeks of the term. For people who needed help learning the new

interfaces to our electronic databases, we developed an Electronic Resources web page at:  
<http://osu.orst.edu/dept/library/database.htm>  
 and a Reference Librarian Help page to help guide library users to the right resource:  
<http://osu.orst.edu/dept/library/refhelp.htm>.

Librarians held 36 drop-in sessions for new students in the library near the Electronic Resource Center and in the Student Computer Lab located in Milne Computer Center. In addition to the drop-in sessions and tours we offered at the beginning of the term, we provided library orientation tours for students from the New Student Orientation Program, Educational Opportunities Program, the English Language Institute and several academic departments on campus.

Other aspects of our library instruction program have been affected by the library construction and the switch to web access of many of our electronic databases. We saw

increased business at the Reference/Information Desk, with questions ranging from: "Where can I find information on health care in Brazil?" to "Where did the business books go that used to be on the third floor?" We also saw an increase in the number of requests for subject-based instruction.

Faculty from the College of Health and Human Performance and other campus colleges and departments asked us to orient their classes to library resources in their subject areas. Since we won't have a library classroom until the second floor is complete, we are taking our show "on-the-road" with a laptop, wireless modem and projection unit to introduce students to library resources via the Library web page.

Library instruction here at The Valley Library will continue to change and develop, just as our building is changing. As always, librarians, staff and students will be available to assist library users with locating the information and services they need.

Are you interested in finding out more about library services and resources? You may access the library web page at:  
<http://osu.orst.edu/dept/library>  
 or call the Library Information Desk at 737-7295.

## CONSTRUCTION DEMANDS INNOVATION IN ORIENTING NEW STUDENTS TO THE VALLEY LIBRARY

BY CHERYL MIDDLETON  
 REFERENCE LIBRARIAN



Cheryl Middleton



## IN MEMORY OF SARA HART KIMBALL 1936–1997

**S**ara Hart Kimball lived in New York for a time following her graduation from OSU, but later moved to San Francisco, where she worked for the William R. Wrigley Company. In 1966 she joined Kimball & Company, and subsequently married Bill Kimball in 1984.

Although Sara lived on an island in San Francisco Bay, her favorite song was "New York, New York," not "I Left My Heart in San Francisco." This song held special meaning for Sara and her husband, Bill. Whenever they heard this song in a social setting, they would find each other to dance.

Sara was an energetic person. She enjoyed serving on the boards of organizations such as the Harvard Business School; the San Francisco Educational Fund; the Marin Ballet Association; the Marine Mammal Center in Sausalito; the Branson School in Ross, California; the Colonial Williamsburg Foundation; and the San Francisco Yacht Club. Many other organizations benefited from her boundless enthusiasm and hard work.

Mrs. Kimball, Class of '58, had fond memories of her happy days as a Pi Phi and appreciated her business education at Oregon State University. This prompted her to add service on the OSU Foundation Board to her numerous activities.



*Sara and Bill Kimball at The Valley Library Groundbreaking*

As a board member, she supported the Foundation with energy, leadership, and significant financial gifts. Among other things, she and Bill supported the Hart Scholarship in the College of Forestry, the Alumni Association, the Family Studies Center, and Trustee Presidential Scholarships. In 1989, their generous gift created the Sara Hart Kimball College of Business Dean's Chair.

Together, Bill and Sara served pivotal roles as co-chairs (in alliance with two other committed couples) of the very successful campaign for the OSU Library. This team was the catalyst for a \$47 million fund-raising effort. They personally gave a leader-

ship gift to name a Rotunda Reading Room in The Valley Library, and joined with other generous donors to fund the John V. and Shirley Byrne Reading Room in the Lundeen Rotunda.

Sara passed away last August of cancer. A remarkable person and Oregon Stater extraordinaire, she will be remembered as a caring friend and we will miss her.

P.S. At the conclusion of her memorial service, Sara requested that a special song be played. Can you guess? It was "New York, New York," of course!





**T**he Valley Library is looking for a few good volunteers to staff the Library's newly created

"Ask Me" desk. The desk originated to help students and faculty navigate through the Valley Library during the most difficult time of the construction project, but it became obvious that the need to provide basic directional assistance to our users was still needed.

To accomplish this, an "Ask Me" desk volunteer program has been created. Coordinated by Donetta Sheffold, the library's personnel manager, 12-14 volunteers are being sought to work the desk during Spring term. Friends of the Library, area alumni and OSU retirees are especially encouraged to volunteer.

This is a great opportunity to stay connected to campus, assist library patrons and enjoy the university atmosphere for two to three hours per week. Each volunteer will receive two hours of training during March 16-27, with scheduled desk



**WE'RE  
LOOKING FOR A  
FEW GOOD  
VOLUNTEERS**

hours beginning the week of March 30 and continuing through the end of the term, June 12.

Spring term will be the first time the "Ask Me" desk is staffed with volunteers and The Valley Library hopes this will be the beginning of a volunteer program which will provide a variety of experiences. Other volunteer opportunities will be available as the library expansion continues and as updated and/or new services are offered by The Valley Library.

For additional information about the "Ask Me" desk, or to volunteer your services, please contact Donetta Sheffold at 737-7297 or by e-mail: [sheffold@ccmail.orst.edu](mailto:sheffold@ccmail.orst.edu).



# PRIVATE DOLLARS, PUBLIC TREASURES— A THANK YOU TO FRIENDS OF OSU LIBRARIES

**A**s Americans have given to various charitable efforts over the years, they have created many national treasures available to all. Virtually all of the truly great libraries have been made great through gifts from individuals. We are most grateful to all of you who have generously supported the Oregon State University Libraries.

## THE HARRIS SOCIETY

\$10,000,000 +

Valley Foundation, Wayne and Gladys

\$2,000,000 – \$9,999,999

Lundeen, Robert and Betty

\$1,000,000 – \$1,999,999

Associated Students of OSU  
Cameron, Elizabeth  
Campbell, Delpha and  
Donald (deceased)  
Kelley, Martin and Judy  
Kimball, Bill  
Kimball, Sara (deceased)

## THE STRAND SOCIETY

\$250,000 – \$999,999

Autzen Foundation  
Forman, L. Tillman  
Kuse, James R. and Shirley

*We extend a special recognition to our Friends who have reached milestones in their total lifetime giving to the Oregon State University Libraries.*

Kuse, Michael J. and Michelle  
McKennon, Keith and Pat  
Smith, Andrew V. and  
LaVonne  
Stewart, Faye  
Stewart, Lucille (deceased)  
Strain, Douglas  
Trysting Tree Golf Club  
Wilson, Norman (deceased)

## LINUS PAULING ASSOCIATE

\$100,000 – \$249,999

Austin, Ken and Joan  
Barnekoff, David and Janet  
Burlingham Trust Inc.  
Burlington Resources/  
Meridian Oil  
Castles, James (deceased)  
Castles, Louise  
Clark, Maurie and Mary  
DeLoach, Barton (deceased)  
Dow Chemical Company  
Drinkward, Cecil and Sally  
Fisher, Ruth  
Giustina, Nat and Jackie  
Hartung, Thomas and Beverly  
Knudson, Gene and Rosalie  
Merchant, Steve and Ina  
Ott, Walther and Maxine  
PacifiCorp Foundation  
Portland General Electric  
Roth, Lewis & Evelyn  
Tektronix Inc.  
Teter, Kenneth (deceased)  
Whiteley, Ben and Elaine  
Willamette Industries Inc.

## TRYSTING TREE SOCIETY

\$50,000 – \$99,999

Autzen, Tom (deceased)  
Bolinger, Duis (deceased)  
Brod, Bill and Bonnie

Broehl, Charleen  
Broehl, Donald (deceased)  
Chambers, Doug and Vivian  
First Interstate Bank  
Foundation  
MacGregor, Cecil and Martha  
Morris, Lawretta  
Nielson Family, Ralph N.  
OSU Student Foundation  
The Roach Family  
Totten, Winifred  
Trout, Thomasina (deceased)  
Winton, Harriet

## WILLIAM JASPER KERR SOCIETY

\$25,000 – \$49,999

Bassett, Edward and Karen  
BTI  
Charley, Helen  
Coe, Howard and Gloria  
Dahlin, Dick and Phyllis  
Evans, Alice  
Fisher, Ruth  
Freedom Forum  
Harris, Carolyn  
Hart Architectural Systems  
Herse, Bertha E. (deceased)  
Markham, Mamie (deceased)  
Master Millwork  
Mason, Robert and Sue  
McCool, Betsy and Daniel  
Merryfield, Anne  
Nielsen, Ralph and Viola  
Normington, Thomas and  
Sara  
Oregon Freeze Dry Inc.  
Rawlinson, Frank and Char  
Saucy, Helen (deceased)  
Standard Insurance Company  
Summers, Anita  
Sun Microsystems, Inc.  
Wells Fargo Foundation

## KIDDER HALL SOCIETY

\$10,000 – \$24,999

Beck, James F.  
Bowen, La Rayne (deceased)  
Brunskill, Paul  
Busch, James and Ellen  
Byrne, John and Shirley  
Casey, Verne and Georgeann  
Citizens Bank  
Cutress, Bertha  
Day, Duane and June  
Dow Corning Corporation  
Fendall, Bill and Frances  
Fisher, Barry and Carol  
George, Melvin and Shirley  
Goddard, Betty  
Hackleman, David and Debra  
Harrison, Marshall and  
Dorothy  
Hatch, Richard  
Hewlett-Packard Company  
Hill, Arik  
Hitsman, Arthur and Ellen  
Hulsman, Gerald and Beth  
Kearney, Lee and Connie  
Kelts, Lora Ives (deceased)  
Kidder, Alice Kathryn  
Moldenke, Alma  
Naff, M. Benton  
Nyberg, Kay  
Olesen, Dolly  
Olesen, Kay (deceased)  
Oregon Community  
Foundation  
OSU Senior Class of 1995  
Pape' Group Inc.  
Pendleton, Ray (deceased)  
Retzer, William and Mary  
Rieckmann, William and  
Michal  
Satrum, Jerry and Dawn  
Scott, Walter and Suzanne  
Sponenburgh, Mark



## LIFETIME GIFTS

SRG Partnership P. C.  
Waite, Stephen and Joan  
Walker, John and Betty  
Wellman, Norbert and Ann  
Wheeler Foundation  
Wilson, James

### CAMPBELL LIBRARIAN'S CIRCLE

\$5,000 – \$9,999

Arcscott, George and Elizabeth  
Asbury, Elizabeth  
Atteberry, Walter and Pauline  
Baird, Tessie  
Beuter, John and Jill  
Buell, Les and Betty  
Brown, Bob  
Burkert, Ivan and Donna  
Carlson, Robert and Edith  
Castle, Emery and Merab  
Cheney, Horace and Dorothy  
Chipman, Ada  
Chown, Frank and Eleanor  
Corey, Lloyd and Virginia  
Davidson's Masonry, Inc.  
Dick, Harry and Betty Lou  
Edgerton, Roy and Shirley  
Fenner, John and Dorothy  
Floberg, Bill and Sally  
Gerstacker, Carl  
Giustina, Larry and Carolyn  
Goff, Richard and Susannah  
Goudy, Alan and Jane  
Harper, James and Mariellen  
Hatch, Richard  
Hwang, Yun-Sheng and Chiu-Lie  
Ifft, Charlotte (*deceased*)  
Jensen, James (*deceased*)  
Jones, Robert Dean and Hilda  
Kearney, Lee and Connie  
Keil, Robert  
Kirkendall, Lester  
Knodell, Bill and Donna  
Lemon, Berlan and Dorette  
MacVicar, Robert and Clarice  
Merck Company Foundation  
Nicodemus, David  
Northwest Natural Gas

Rawlinson, Frank and Char  
Rodriguez, Sumner and Adele  
Roth, Jean Starker  
Sandine, William and Sue  
Simmons, Forrest and B J  
Tarbell, Harry and Polly  
Thomas, David and Clarissa  
Trow, Clifford and Jo Anne  
Wildish, Norman and Evelyn  
Wilson, Jerry and Marilyn  
Youngstrom, Elizabeth

### BENEFACTOR

\$1,000 – \$4,999

Abbott Laboratories Fund  
Adams, Robert and Mary  
Agricultural Sciences, College of  
Allen, Charlotte (*deceased*)  
Allstot, David and Vickie  
Ambrosini Design  
Amme, Norman (*deceased*)  
Anselone, Philip and Joann  
Arnold, Roy and Jane  
Arthur, John and Beverly  
Barnard, James and Ramona  
Baynes, Frank  
Beardsley, Alan and Alice  
Benesh, Timothy and Rebecca  
Berger, Paul and Geraldine  
Bernier, Paul and Isabelle  
Beuter, John and Jill  
Bielman, Kenneth and Julie  
Blanc, James  
Bland, Steven and Monica  
Blount, Bill and Nancy  
Bollen, Walter and Mary Ellen  
Bremer, Kathy  
Brook, Zel and Bradford  
Whiting  
Buchner, Ronald and Ann  
Bowling, Michael and Ann  
Burnham, Richard and Robin  
Burt, Louise  
Butcher, Karyle  
Caldwell, Doris  
Callahan, Darry and Betty  
Calvin, Lyle and Shirley  
Cappelli, Raymond and Kathryn  
Carlstrom, Ted and Alzora  
CH2M-HILL  
Chamberlain, Gordon  
Chambers, Kenton and Henrietta  
Charnock, Betty Roake

Chay, Cathy  
Chevron Corporation  
Ching, Kim and Te May  
Christen, Paul  
Cleasby, Gilbert and Marie  
Coakley, James and Stella  
Compton, Cecil and Mary  
Corey, Lloyd and Virginia  
Cowan, Ruth  
Craven, Gene and Norma  
Culley, Bob and Mariann  
Dalton, Clifford and Donna  
Dayton, Irving and Jean  
Decius, John and Anne (*deceased*)  
Delta Air Lines Foundation  
Dircon Farms, Inc.  
Donovan, Robert  
Drexler, John  
Duncombe, Richard and Alesia  
Educom  
Edwards, Allen and Carolyn  
Eli Lilly and Company Fdn.  
Elle, Ralph and Doris  
Elliker, Paul  
Emery, William  
Emory, Pamela  
Eross, Jolan  
Evans, Harold and Elizabeth  
Evey, John and Beate  
Exxon Education Foundation  
Eyman, Steven and Dorothy  
Farber, Paul and Vreneli  
Faucett, Judy  
Finch, David and Mary  
Flahive  
Fisher, Barry and Carol  
Flanigan, Michael and Carole  
Foley, Dwayne and Jan  
Forrester, Jess and Eleanor  
Fox, Anne  
Fraser, Paul and Aleta

Gilkey, Gordon  
Gilkey, Vivian (*deceased*)  
Gilkey, Richard and Alyda  
Gordon, Louis and Jacqueline  
Graham, C. H. "Scram" and Jean  
Graham, Dan and Marilyn  
Grammel, David  
Greber, Henry and Patsy  
Gregory, Marie (*deceased*)  
Hagn, George and Rose  
Hall, Jim and Bonnie  
Hall, Robert and Emily  
Hardesty, David and Penny  
Hardy, Thomas and Constance  
Harem, Fred and Doris  
Harrison, Ken and Ginger  
Harper, Jim and Mariellen  
Hawthorne, Betty (*deceased*)  
Heald, James and Mary  
Henderson, Nealan  
Herlocker, Dennis and Catherine  
Highsmith, Richard  
Hixson, Bryce and Kathleen  
Hoffbuhr, Jack and Donna  
Hood, Brenda  
Hovland, Warren and Sue  
Howard, Kenneth and Beth  
Howland, James and Meisy  
Howlett, John and Roxie  
Hughes, Joy and Ken Lee  
Huyer, Adriana  
Hwang, Yun-Sheng and Chiu-Lie  
Intel Foundation  
Ito, Bruce  
Johnson, Robert Buford  
Jones, Carmen L.  
Jones, Jeffry  
Jones, Max and Piper  
Jorgensen, Lee and Stephanie

*The library is not a shrine for the worship of books. It is not a temple where literary incense must be burned or where one's devotion to the bound book is expressed in ritual. A library, to modify the famous metaphor of Socrates, should be the delivery room for the birth of ideas—a place where history comes to life.*

—NORMAN COUSINS

*The library connects us with the insight and knowledge, painfully extracted from Nature, of the greatest minds that ever were, with the best teachers, drawn from the entire planet and from all our history, to instruct us without tiring, and to inspire us to make our own contribution to the collective knowledge of the human species. I think the health of our civilization, the depth of our awareness about the underpinnings of our culture and our concern for the future can all be tested by how well we support our libraries.*

—CARL SAGAN

Kallander, Rudy and Jary  
Kaufman, William  
Kearney, Lee and Connie  
Keil, Robert  
Kellogg, Lloyd and Mildred  
Keltner, John and Maria  
Kilian, John  
Kinch, Michael  
King, James  
King, Roger and Helen  
King, Riley  
Kittel, Joe  
Klein, Glenn  
Krane, Kenneth and Paula  
Krueger, Hugo and Ruth  
Kuhl, Jack and Ruth  
Kuhns, Russell and Marilyn  
Lang, John and Althea  
Laoteppitaks, Chansak and Boonsri  
Lattin, John and JoAnne  
Ledbetter, Marie (*deceased*)  
Lee, Richard and Vickie  
Leggett, Allen  
Leman, Craig and Nancy  
Leslie, Kent  
Lindquist, Roger and Whitney  
Lindsay, Lyle  
Lindseth, Chris and Elizabeth  
Litchfield, G. K.  
Lock, William  
Lorenzen, Michael and Patty  
Mann, Howard  
Mann, Lawrence and Donna

Manning, Walter and Julie Jones-Manning  
Marsh, Albert and Elizabeth  
Martin, Jeffry and Lynne  
Marwin, Richard  
Mast, Hollis and Ann  
Matsumoto, Masakazu  
McCallister, Alan and June  
McElroy, Gerald and Jeanne  
McGinnis, James and Anna  
McGowan, John  
McKesson, John  
Mead, Clifford  
Meehan, Thomas and Margaret  
Meyer Memorial Trust  
Miller, Ronald and Betty  
Miller, Donald  
Milleson, Thomas  
Moore, Donald and Jane  
Moore, Jean and Rod  
Moore, Sylvia  
Morrow, Alice  
Morse, William and Jean  
Naef, Randall and Mary Jo  
Narver, Mildred  
Neugart, Zelma  
Newbern, David and Caroline  
Niederfrank, Helen  
Nooteboom, Gary and Sabine  
Northcutt, Allison  
Nyberg, Clayton  
Nye, Robert and Mary Jo  
Osborne, Owen and Judith  
Palmer, Richard and Carol  
Peck, Norton and Barbara  
Peckham, William and Jean  
Perry, Joanne

Peters, Donald and Anita  
Phi Kappa Phi  
Poirot, James and Raeda  
Poorman, Ken and Sue  
Popovich, Milosh and Jeanne  
Poree, O'Neil and Katherine  
Portland Celebrity Forum, Inc.  
Potts, Helen  
Powell, Gary and Joyce  
Powell, Nancy  
Reckendorf, Frank and Elisa  
Reckmann, Douglas  
Reichart, Robert  
Reynolds, Earl and Jodi  
Richen, Clarence  
Rigler, Ross and Janet  
Ripley, Douglas  
Rogers, David and Edythe  
Rohrmann, George  
Rose, Paul and Jean  
Rudd, James and Cathryn  
Sass, Gerald  
Saxton, Frances  
Saylor, Clyde Jr.  
Sayre, Henry  
Schary, Philip and Nancy  
Schuette, Henry and Janice  
Schumacher, Carl and Louise  
Scott, Allen  
Scott, Delbert and Alice  
Scott, Shirley and Edward  
Scroggins, Tom and Mary  
Seville, Mary Alice  
Shaffer, Richard and Kathleen  
Shaw, Roberta C.  
Shoemaker, Clara  
Shoemaker, David (*deceased*)  
Short, William and Katherine  
Simmons, Bland and Beverly  
Simone, Mark V.  
Skehen, Joe and Debbie  
Slater, Daniel and Sue  
Sly, Virginia  
Smith, Helen  
Sollitt, Charles and Melissa  
Souder, Lee and Denise  
Spady, Richard and Ina  
Spinney, Robert and Carol  
State Farm Companies  
Stoll, Robert and Nancy  
Stoltenberg, Carl and Rosemary  
Sturmer, Dale  
Tenneco Incorporated  
Thompson, Clarence and Irma

Thompson, Dick and Kim Hyde  
Tilles, Doris  
Todd, James and Bergen  
Tostevin, Breck  
Trommershausen, Al  
Trommershausen, Minnie (*deceased*)  
Trommershausen, Claire  
Tschang, Pin-Seng and Shirley  
Tupling, Gordon and Lois  
Tuthill, Lewis (*deceased*)  
Tuthill, Olga  
Tyus, Ober  
US WEST Communications Foundation  
Union Pacific Corporation  
Valyasevi, Ruud  
VanDevender, Neal and Cynthia  
Van Vliet, Tony and Louise  
Van Zandt, Edward and Sheila  
Varbel, Kathy  
Vars, Charles and Freda  
Wake, Don and Susanne  
Walker, Burdett  
Wang, Chih  
Weatherspoon, Margaret  
Weber, Bruce and Bobbie  
Weber, John and Bonnie Avery  
Weber, Leonard and Barbara  
Webster, Janet and Stephen  
Wells Fargo Bank  
White, Patricia June  
Wildish, Norman and Evelyn  
Wilson, Daniel and Lois  
Wissman, Roger  
Withers, Lawrence and Velvet  
Wogaman, Thomas and Mariol  
Woodburn, Margy  
Woosley, Charles and Gail  
Yonker, Nicholas and Thea  
Youde, James and Judith  
Young, J. Lowell and Ruth Ann  
Young, Roy A. and Marilyn  
Youngstrom, Elizabeth  
Ziady, Jonathan and Merrie



*Annual gifts to the Oregon State University Libraries form the foundation of our development program. We are very grateful for the generosity of our Friends during the past year (December 25, 1996 to December 25, 1997).*

*This listing does not include planned gifts and pledges.*

**THE HARRIS SOCIETY**

\$1,000,000 +

Valley Foundation, Wayne and Gladys

**TRYSTING TREE SOCIETY**

\$50,000 – \$99,999

Kuse, Jim and Shirley  
The Roach Family  
Smith, Andrew V. and LaVonne

**WILLIAM JASPER KERR SOCIETY**

\$25,000 – \$49,999

Hart Architectural Systems  
Master Millwork  
Normington, Thomas and Sara  
PacifiCorp Foundation  
Wells Fargo Foundation  
Willamette Industries, Inc.

**KIDDER HALL SOCIETY**

\$10,000 – \$24,999

Beck, James F.  
Broehl, Charleen  
Citizens Bank  
Drinkward, Cecil and Sally  
Merchant, Steve and Ina  
Saucy, Helen (*deceased*)

**CAMPBELL LIBRARIAN'S CIRCLE**

\$5,000 – \$9,999

Davidson's Masonry  
Youngstrom, Elizabeth

**BENEFACTOR**

\$1,000 – \$4,999

Attebery, Walter and Pauline  
Cutress, Bertha  
Dahlin, Dick and Phyllis  
Elle, Doris and Ralph  
Goddard, Betty  
Hatch, Richard  
Hill, Arik  
Marsh, Albert and Elizabeth  
Mason, Robert and Sue  
McCool, Betsy and Daniel  
Northcutt, Allison  
Nyberg, Kay  
Nye, Robert and Mary Jo  
Oregon Coast Aquarium, Inc.  
Pape' Group Inc.  
William and Mary Retzer  
Waite, Stephen and Joan  
Walker, John and Betty  
Willamette Industries Inc.  
Youde, James and Judith

**PATRON**

\$500 – \$999

Burkert, Ivan and Donna  
Charnock, Betty Roake  
Chown, Frank and Eleanor  
Eross, Jolan  
Floberg, Bill and Sally  
Fraser, Paul and Aleta  
Harper, Jim and Mariellen  
Hyde, Jay and Joyce  
Jemison, George  
King, Riley  
Laoteppitaks, Chansak and Boonsri  
Thompson, Dick and Kim Hyde  
Van Zandt, Edward and Sheila  
Veitch, Thomas  
Whalen, Doris

**SPONSOR**

\$250 – \$499

Drexler, John  
Emory, Pamela  
Feight, Craig  
Grammel, David  
Hardesty, David and Penny  
Henderson, Nealan  
Hewlett-Packard Company  
Intel Foundation  
Knodell, Bill and Donna  
Lang, John and Althea  
Manning, Walter and Julie  
Jones-Manning  
Roegner, Keith  
Stone, Patrick and Vicki  
Swanson, Frederick and Mary  
Todd, James and Linda

**SUPPORTING FRIEND**

\$100 – \$249

Akhavein, Ali and Dee  
Baer, Marguerite  
Beall, William  
Belshee, Russel and Hope  
Bishop, Norman and Patricia  
Bohl, Herbert  
Bransford, Donald  
Brown, Clinton and Cheryl McLean  
Buchner, Ronald and Ann  
Butcher, Karyle  
Capps, Mary  
Chamberlain, Gordon  
Christen, Paul

Crino, Arthur  
Dalton, Clifford and Donna  
Davis, Richard and Kathleen  
Doherty, Robert  
Dunn, Jean  
Edens, Wesley  
Elbow, Gary and Margaret  
Finch, David and Mary  
Hamner, L. Allen  
Hoffbuhr, Jack and Donna  
Hsieh, Julie  
Innes, Robert and Yukiko  
Isaacson, Dennis  
Ito, Bruce  
Jones, Elaine  
Kammeyer, Raeline  
Kerkvliet, Nancy  
Krane, Kenneth and Paula  
Lamb, Maryann  
Leggett, Allen  
Lozier, Selina  
Lund, Dennis and Kathleen  
Lyons, William  
Martin, Jeffry and Lynne  
Matsumoto, Masakazu  
McBee, James  
Merck Company Foundation  
Moore, Sylvia  
Nelson, Brett  
Neugart, Zelma  
Newbern, David and Caroline  
Norton, Peter  
Olson, Suzanne  
Parker, Edwin  
Potter, John and Sandra  
Prenter, Patricia

*My lifelong love affair with books and reading continues unaffected by automation, computers, and all other forms of the twentieth-century gadgetry.*

—ROBERT DOWNS

*We are not afraid to entrust the American people with unpleasant facts, foreign ideas, alien philosophies, and competitive values. For a nation that is afraid to let its people judge the truth and falsehood in an open market is a nation that is afraid of its people.*

—JOHN F. KENNEDY

Rose, Jean and Paul  
 Russell, Elizabeth  
 Sayre, Henry  
 Sears, Kay  
 Seville, Mary Alice  
 Sexton, Harold and Charlotte  
 Shaw, Douglas  
 Sheraw, Sheryl  
 Slater, John  
 Sollitt, Charles and Melissa  
 Souder, Lee and Denise  
 Tilles, Doris  
 Tsai, Chen and Gloria  
 Tyus, Ober  
 U.S. Bank  
 Utzinger, Nicholas  
 Wijaranakula, Witawat  
 Williams, Margaret  
 Williams, John  
 Withers, Velvet and Bud  
 Woosley, Gail and Charles  
 Ziady, Jonathan and Merrie

#### FRIEND

\$50 – \$99

Abbott, Gheen  
 Adams, Gerald and Sara  
 Agnew, Allen and Frances  
 Allender, Laurel and Brian  
 Arnold, James  
 Aschbacher, Shaun  
 Ashkenas, Linda  
 Berka, Jack and Kelly  
 Bonniksen, Christine  
 Bowman, Sue  
 Boyer, Charles and Mary  
 Brickley, Thomas  
 Brown, Daniel and Sandra  
 Buck, Steve and Nancy  
 Burton, Carmen  
 Candolfi-Vasconcelos,  
 Manuleto  
 Carlson, Sherrill

Cassel, David and Lois  
 Cerotsky, Barbara and  
 Kenneth  
 Chadburn, Amy  
 Chandler, Marilyn  
 Chappell, Paul  
 Clark, Ronald and Irene  
 Comer, Thomas and Rosalie  
 Cornell, Joseph  
 Coughlin, Walter and Ellyn  
 Culp, Dick and Bev  
 DeLander, Gary  
 deSzoeki, Roland and Judith  
 Donel, John  
 Drtina, Ellen and Clarence  
 Duncan, Robert and Anne  
 Duncombe, Richard and  
 Alesia  
 Dunn, James and Joyce  
 Elmgren, Roy and Vera  
 Enke, Trudy  
 Envall, Kenneth and Sharon  
 Eyer, Michael  
 Faber, Robert  
 Farber, Paul and Vreneli  
 Ferraro, Steven  
 Folgate, Henry and Teresa  
 Foster, Mark and Celia  
 Galloway, Janet  
 Gardner, Lee and Richard  
 Judd  
 Geiger, John and Patricia  
 Gerig, Allen and Susan  
 Goforth, Peggy  
 Goldstein, Robert  
 Gonser, Howard and Kathy  
 Gottlieb, Leslie and Vera  
 Greenley, Dale  
 Grotzinger, Raymond and  
 Leah  
 Hanson, Robert  
 Hawes, Gilbert  
 Heimel, Kathryn  
 Hemming, James and Nancy

Henderson, Mark  
 Hite, Randolph and Luraina  
 Hoffman, Linda  
 Hsu, Ching-Hui and Pee  
 Hu, Sung and Lily  
 Huddleston, J. Herbert  
 Klinkhammer, Gary and  
 Susan  
 Lemon, Berland and Dorette  
 Ludlow, Gerald  
 Lundt, Jeffrey and Mary  
 Magnuson, Sharon  
 Manners, Gary  
 Mansfield, William and Susan  
 McGoffin, Kenneth  
 McKinley, Loren and Eileen  
 McKnight, Irvine  
 Milburn, Gary  
 Miner, W. and Susan  
 Miner, J. Ronald and Betty  
 Mock, Gerald and Ruth  
 Mohn, Herbert and Mary  
 Moore, Larry and Marjean  
 Mullenix, James  
 Murphy, Patrick  
 Nakamura, Brian and Marla  
 Nelson, Merton  
 Nuss, Jeffery and Kathryn  
 Nyberg, John and Nancy  
 O'Brien, Mary  
 O'Hanlon, Beth  
 Oehler, Dennis and Nellie  
 Parrish, Marilyn  
 Pease, John and Florence  
 Pedersen, Elaine  
 Pederson, Curtis and Patricia  
 Pickens, Ann  
 Powell, Nancy  
 Quisenberry, Clifford  
 Rainey, James and Joan  
 Rambadt, Joan  
 Reineccius, Linda  
 Reinecker, Steven  
 Rhoads, John and Sharon  
 Richards, Donald  
 Richardson, Helen  
 Rielly, Loretta  
 Rydman, Sharon

Saffell, Ainsley and David  
 Scarpino, Mary  
 Schamp, Alan  
 Schnautz, Charles  
 Schoblom, Eric  
 Scott, Edward and Shirley  
 Shaw, Patricia  
 Sorum, Marsha  
 Spady, Richard and Lou  
 Stewart, Robert and Dottie  
 Stover, Lawrence and  
 Ramona  
 Stroop, William and Janice  
 Suit, Herman and Joan  
 Sumida, Kent and Gale  
 Tatchell, Kelly  
 Taylor, Mitchell and Beth  
 Thomas, T. Darrah and  
 Barbara  
 Timm, Karen  
 Tubbs, Steve and Jerri  
 Tune, Lee and Margaret  
 Ulrich, Janice  
 Urban, Karl and S. Elaine  
 Vanderheyden, Jon  
 Walhood, Patricia  
 Wang, Stanley  
 Wanzer, Alvin  
 Weimar, Michael and Holly  
 Wilbanks, Arta  
 Willener, H.C.  
 Willett, Kent  
 Wong, Marilyn  
 Young, Gene and Sandra  
 Zeagas, George and Bonnie  
 Zernel, John and Nancy

*A very special thank you goes to the more than 1,000 generous alumni and friends who made gifts of under \$50 to the OSU Libraries during the year. We are most grateful for your support.*

*I find television very educational. The minute somebody turns it on, I go into the library and read a good book.*

—GROUCHO MARX



## THE BENEFITS OF MEMBERSHIP

**H**ave you wondered about that unusual little bird that's been coming to your backyard feeder this winter? Well, we've got the book for you!

The OSU Press has just published a guide to winter birds in the Northwest.

Bird watching is one of the fastest growing outdoor activities in America. Millions enjoy watching birds and identifying species in their back yards and elsewhere during the year. But "birding" enthusiasts in the Pacific Northwest no longer have to wait until the warm days of spring to look for their feathered friends. Though the birds' plumage may not be as bright in the dark days of winter, there are still about 380 species to be found in Oregon, Washington, Idaho and southern British Columbia in December, January and February.

*"Northwest Birds in Winter"* is the first book guide published about winter birding in the Northwest. Author Alan Contreras is an ornithologist and coauthor of several books on Oregon birds. Illustrator Ramiel Papish is a noted wildlife artist.



The one advantage winter birding enthusiasts have, the author points out, is the opportunity to see many birds at once.

"Unlike the breeding season, when birds are territorial and observers must travel widely to see them, in winter many birds concentrate," Contreras said. "On a field trip, you can find amazing densities and species variety in a small area."

The book includes tips on the best winter birding sites, photographs of unusual winter birds, maps, illustrations, and counts and population trends of northwest birds.

*"Northwest Birds in Winter"* is available from book stores and libraries, or can be purchased directly from the OSU Press. The paperback costs \$17.95 plus shipping and handling. For more information, contact the OSU Press at 541/737-3166.

---

**BIRD WATCHING IS ONE OF THE  
FASTEST GROWING OUTDOOR  
ACTIVITIES IN AMERICA.**

**OSU PRESS  
PRODUCES  
WINTER  
RESOURCE  
FOR BIRDERS**



## MEMORIAL AND HONORARY GIFTS

**A**re you looking for a way to honor or remember a friend or loved one? Consider a gift to the Friends of the OSU Libraries as a thoughtful way to honor a special person and provide a lasting addition to the OSU Libraries' collections.

To make a memorial or honorary contribution, send your tax-deductible donation of \$50 or more to the Friends of the OSU Libraries. Identify your gift as an honorary or memorial gift for the person you wish to designate, or use the form below. We will then:

- Purchase a book in the subject area you specify.
- Send a personalized acknowledgement letter from the University Librarian to the honored person (or the memorialized person's family in the case of a memorial gift; the letter will mention the lasting memorial your gift made possible).
- Send you a letter acknowledging your gift.
- Have a handsome bookplate placed in the library material purchased with your contribution, inscribed according to your wishes.



I/We wish to honor \_\_\_\_\_  
 on the occasion of \_\_\_\_\_  
 I/We wish to remember \_\_\_\_\_  
 Please notify \_\_\_\_\_  
 I/We have enclosed \$ \_\_\_\_\_

**Please write checks to the Friends of the OSU Libraries, and mail to:**

Office of Library Development  
 121 The Valley Library  
 Oregon State University  
 Corvallis, OR 97331-4501





## THE BENEFITS OF MEMBERSHIP

As a Friend of the OSU Libraries, you receive:

- Special circulation and stack privileges for Library materials
- A copy of the *Messenger*, the biannual Library newsletter
- Invitations to exhibits, lectures and receptions

The Friends welcome everyone interested in the continued excellence of the Oregon State University Libraries. Today, more than 8,000 Library Friends are dedicated to the support of the Library's collections and services.

## INVESTING IN EXCELLENCE

Membership in the Friends of the Library is your investment in excellence. Your support enables the OSU Libraries to deliver information to students and faculty, and to individuals and businesses throughout the world. **Please invest today!**

Name \_\_\_\_\_

Address \_\_\_\_\_

City \_\_\_\_\_

State \_\_\_\_\_ Zip \_\_\_\_\_

Home Phone \_\_\_\_\_ Work Phone \_\_\_\_\_

## INVESTMENT AND MEMBERSHIP LEVELS:

- \$1,000,000 The Harris Society
- \$250,000 The Strand Society
- \$100,000 Linus Pauling Associate
- \$50,000 Trysting Tree Society
- \$25,000 William Jasper Kerr Society
- \$10,000 Kidder Hall Society
- \$5,000 Delpha & Donald Campbell Librarian's Circle
- \$1,000 Benefactor
- \$500-\$999 Patron
- \$250-\$499 Sponsor
- \$100-\$249 Supporting Friend
- \$35-\$99 Friend

**Please return your investment along with this form to:**

Oregon State University Foundation  
517 Snell Hall  
Corvallis, OR 97331-1653

Please make your check payable to:  
*The OSU Foundation*

**Please send me information about:**

- Life income opportunities.
- Including OSU Libraries in my will.
- Benefits of making a gift of appreciated securities.
- Making a gift of real estate.
- Making a gift of life insurance.

## MAKE A DIFFERENCE, BE A FRIEND

- Tell others about the Friends.
- Consider a gift to the Library.
- Consider including the library in your will.
- Make your gift grow. Many companies will match monthly or payroll deduction gifts, as well as annual gifts. Ask for your employer's matching gift application.
- Send us names of potential members and contributors.
- Share the *Messenger* with others.
- Pass on information about Library Friends membership in your newsletter or publications.



## FRIENDS OF THE OSU LIBRARIES

Oregon State University  
121 Valley Library  
Corvallis, OR 97331-4502

Non-Profit Org.  
U.S. Postage  
**PAID**  
Corvallis, OR  
Permit No. 200

# WHERE THERE IS A WILL, THERE IS A FUTURE

*"The best use of life is to invest in something which will outlast life"*

—WILLIAM JAMES

**Y**our legacy is not secure until you have created a will. It is a step many take reluctantly, but it is the only way to ensure your wishes are met.

Charitable bequests can be an important part of your estate planning, ensuring that the institutions you love and support remain strong. Friends of the OSU Libraries are reminded that a gift to the library through a bequest can create perpetual support for the institution.

Your legacy will help assure the library's future while supporting the library program you designate, honoring the name you specify, and generating significant tax savings for your estate. If your legacy gift benefits the OSU Libraries, you'll become a member of the Benton Hall Society.

***Interested?*** Please contact:

Cliff Dalton, Director of Development  
Libraries and Information Services  
121 The Valley Library  
Oregon State University  
Corvallis, OR 97331-4501  
(541) 737-7306

