

TOWARDS GENDER-EQUITABLE SMALL-SCALE FISHERIES & MARKETS IN SOLOMON ISLANDS

Kate Barclay
Anne Maree Payne
Senoveva Mauli

**UTS:ARTS AND
SOCIAL SCIENCES**

OVERVIEW

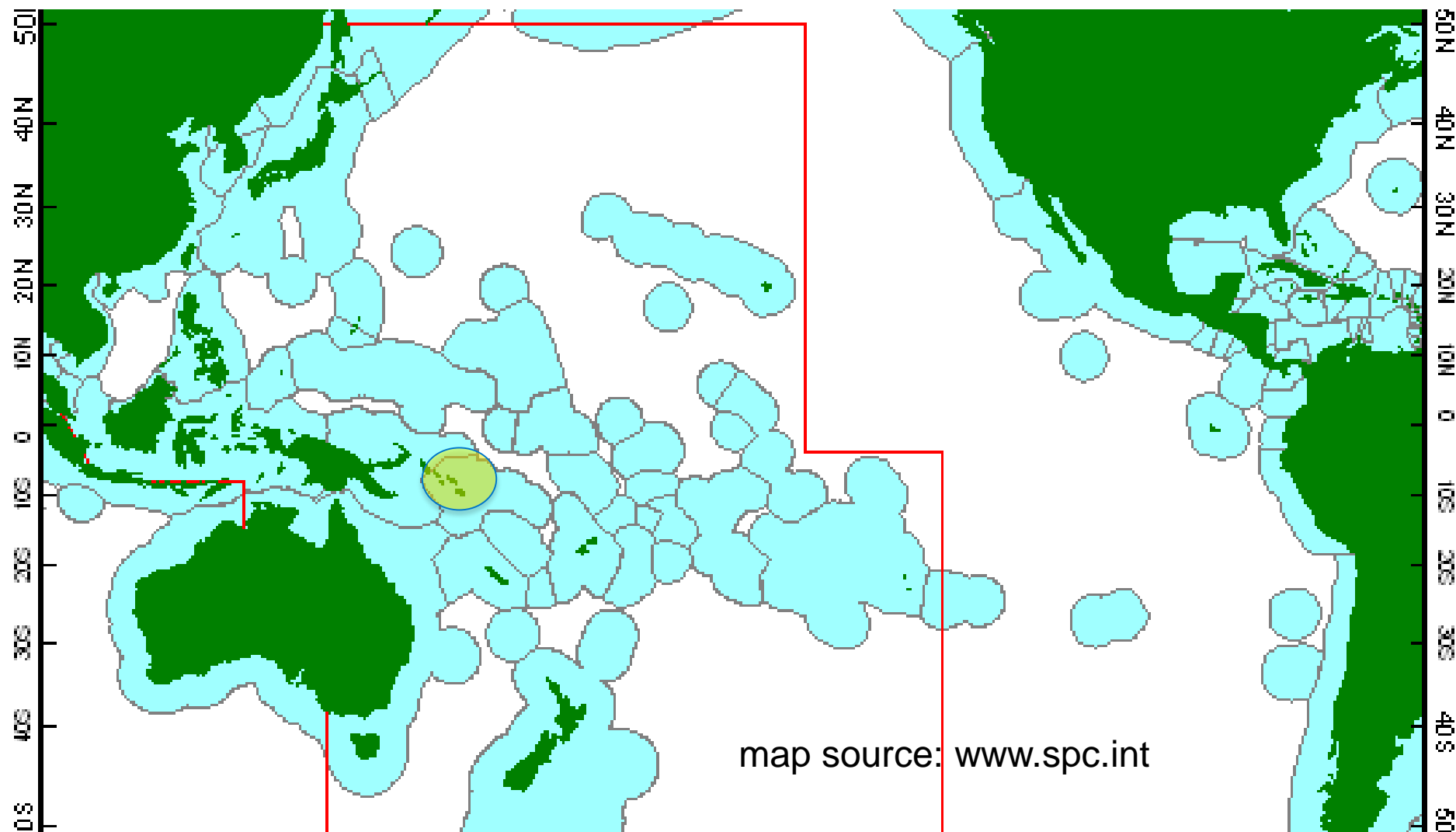
- Outline FAO Guidelines SSF
- Outline case study: Langalanga Lagoon
 - Current economy
 - Issues to address
- Discussion: challenges in implementing SSF Guidelines



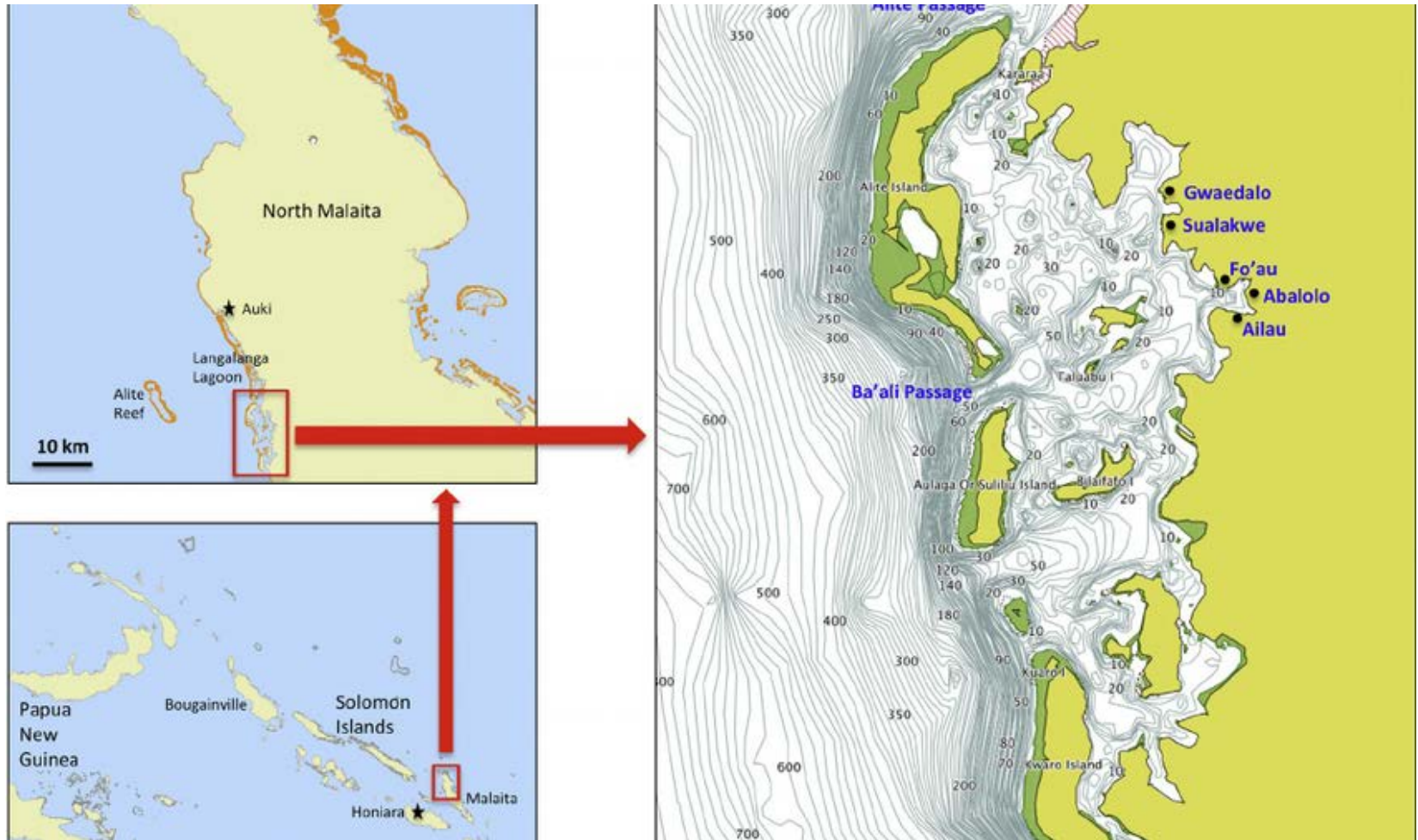
OUTLINE FAO SSF GUIDELINES

- Attached to 1995 CoC Responsible Fisheries
 - Vital food producing role
 - Human rights: marginalized people, marginalized fisheries
- Social development, decent work
- Value chains
- Gender equality
- Disaster & climate change risks
- Policy coherence: institutional coordination & collaboration
- Information & communication
- Capacity development
- Implementation & monitoring

SOLOMON ISLANDS



LANGALANGA LAGOON



ROEGER, J., FOALE, S. & SHEAVES, M. 2016. When 'fishing down the food chain' results in improved food security: Evidence from a small pelagic fishery in Solomon Islands. *Fisheries Research*, 174, 250–259.

CURRENT ECONOMY

- Overpopulated, overfished
- Low access to land, fresh water, sanitation, firewood
- Poor access to markets
- Dynamite fishing (men)
- Boat building (men)
- Shell money (women)

SHELLS USED



MAKING BEADS



Breaking shell into bead shapes



Drilling
holes into
beads

Heat
treating
red beads
to
enhance
the color



Smoothing
the edges
of finished
strings of
beads

SELLING STRINGS OF BEADS



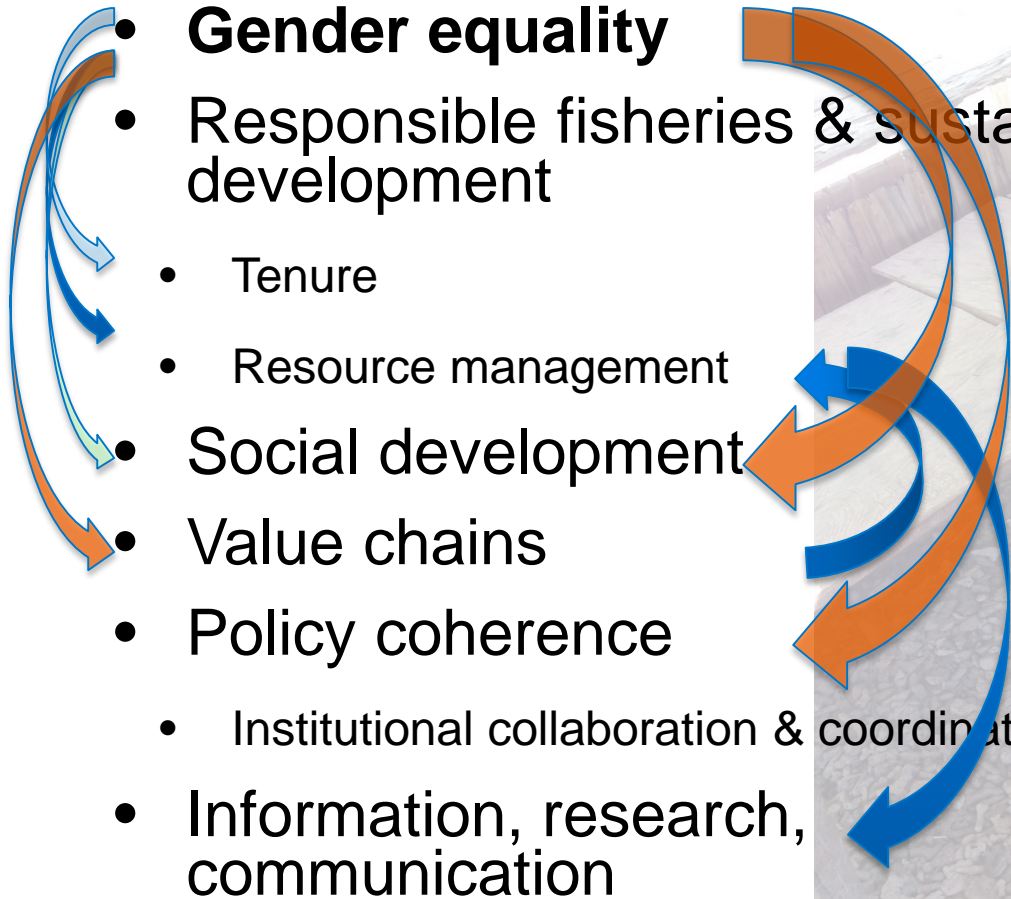
A tin of beads ready to sell to a trade store for food

Strings of beads accumulated by a trade store owner in Langalanga



Selling completed shell money & jewelry at the Honiara Central Market

ISSUES TO ADDRESS

- 
- A diagram consisting of several curved arrows in blue and orange, looping between the listed issues to indicate their interconnected nature. The arrows originate from the left side of the list and point towards the right, with some looping back to the left.
- **Gender equality**
 - **Responsible fisheries & sustainable development**
 - Tenure
 - Resource management
 - **Social development**
 - **Value chains**
 - **Policy coherence**
 - Institutional collaboration & coordination
 - **Information, research, communication**



CHALLENGES IMPLEMENTING SSF GUIDELINES

- Bringing together:
 - social development
 - resource management
 - gender awareness
 - policy coherence
- Government
 - Aid donors
- CBRM
 - Tenure
 - ENGOs
- Hope: Radefasu



THANK YOU!

- Kate Barclay, University of Technology Sydney (UTS) Kate.Barcly@uts.edu.au
- Anne Maree Payne, UTS
- Senoveva Mauli, Solomon Islands Community Conservation Partnership (SICCP)
- ***Many interviewees***
- Solomon Islands Ministry of Fisheries and Marine Resources
- The WorldFish Center

