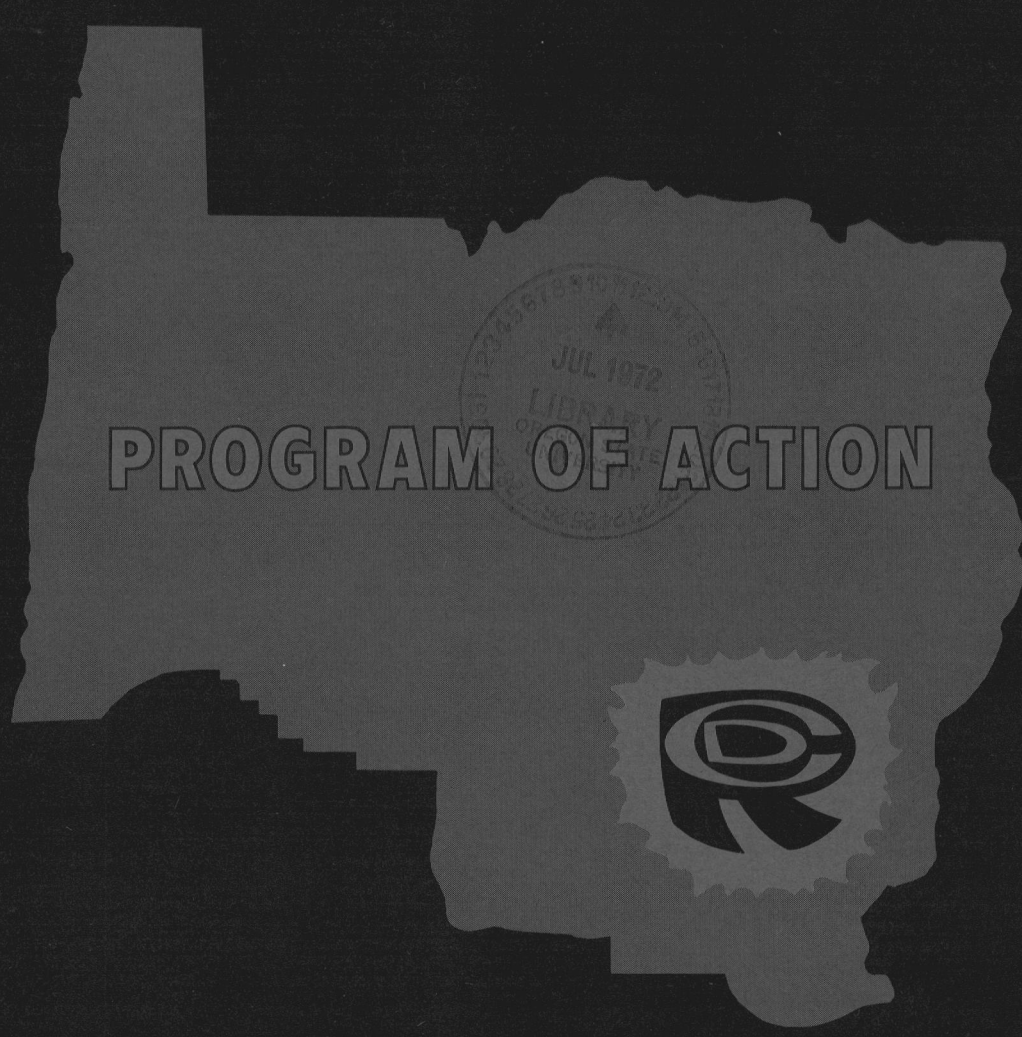


C107
97
7



PROGRAM OF ACTION

UPPER WILLAMETTE

Resource Conservation & Development Project Oregon

U. S. DEPARTMENT OF AGRICULTURE
Soil Conservation Service

USDA SCS PORTLAND, OREG. 1971

1
9
7
1



UPPER WILLAMETTE

Resource

Conservation

& Development Project

1307 Lincoln Street
Eugene, Oregon 97401
Phone: 342-5141, Ext. 401

Sponsored by:

County Governments

Benton
Lane
Lincoln
Linn

Soil & Water

Conservation Districts

Benton
East Linn
Lincoln
Linn Lane
Mid Lane
North Lane
Siuslaw
Upper Willamette

State Soil & Water

Conservation Commission

Acknowledgement

It is my privilege to present our sixth annual work plan. This 1971 Program of Action is the result of deliberations at three area-wide planning meetings held in cooperation with Oregon Administrative Districts 4 and 5 Councils of Government.

Cooperating agencies have given us invaluable support by providing us with ideas and suggestions, as well as staff and clerical assistance. Interested citizens have contributed immeasurably to the scope and usefulness of the various aspects of the Project.

This year our Project was expanded to include the coastal areas of Lane and Benton counties, and Lincoln County. This presents us with a challenge to meet the needs of the 5,000,000 acre area and keep citizens involved in Project activity. We have adjusted our organization to do this and solicited the support and close cooperation of the two Councils of Government.

Through the Long Range Objectives and Annual Goals published in this booklet, the Sponsors hope to continue in our goal to make the Project Area a better place in which to live, to work and to play.

W. G. Nash, President
Upper Willamette RC&D Project

PROGRAM OF ACTION 1971

C O N T E N T S

	<u>Page</u>
FOREWORD	2
Project Area - Map	3
Upper Willamette RC&D Project Organization & Operation Chart	4
Organization & Operation Summary	5
Agency Assistance	7
RESOURCE COMMITTEES	
Long Range Objectives - Annual Goals	8
Agriculture	9
Countryside Beautification	11
Recreation	12
Town & Community Planning	14
Water Development	16
Wildlife	18
Woodland	20
Resource Booklets and Studies	23
1971 WORK PLAN	25

FOREWORD

The Sponsors of the Upper Willamette Resource Conservation & Development Project have planned a program through which local community leaders can work together to develop the natural and human resources of the Project Area. This program was approved by the Secretary of Agriculture in March 1965 and the Sponsors are now actively carrying it forward.

The goals are broad and varied. To make the area a better place in which to live, work and play, the Sponsors have listed their major objectives as follows:

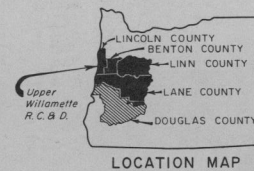
1. Reduce damages from annual flooding by development of water disposal systems and land use zoning of the flood plain.
2. Intensify the cropping systems on agricultural lands through higher levels of management and use of high value crops following an intensive program of flood prevention, drainage, irrigation, market analysis and research; divert marginal croplands to more suitable uses.
3. Develop the forest resources to a sustained yield basis on commercial woodlands in federal, state and private ownership by improved timber management, development of new wood products, improved processing facilities and expanding market outlets to provide labor opportunities and to further stabilize the economy.
4. Increase the quantity and improve the quality of recreational facilities to meet local and tourists' demands through coordination and development of private and public facilities.
5. Provide local governments with basic resource data and methods of utilizing such information in relation to Comprehensive Land Use Planning and Development.
6. Enhance and protect the visual qualities of the physical environment.
7. Improve the economic opportunities of the area by developing new job opportunities and increasing income from farms, timber, recreation and industry.

To attain these goals the Sponsors have obtained the help of many local leaders, and are also assisted by employees of federal, state and county agencies.

The RC&D Project Area has been amended three times to encompass more area with similar problems and to coincide with Administrative Districts 4 and 5 established for the State of Oregon, the counties of Benton, Lane, Linn and Lincoln.

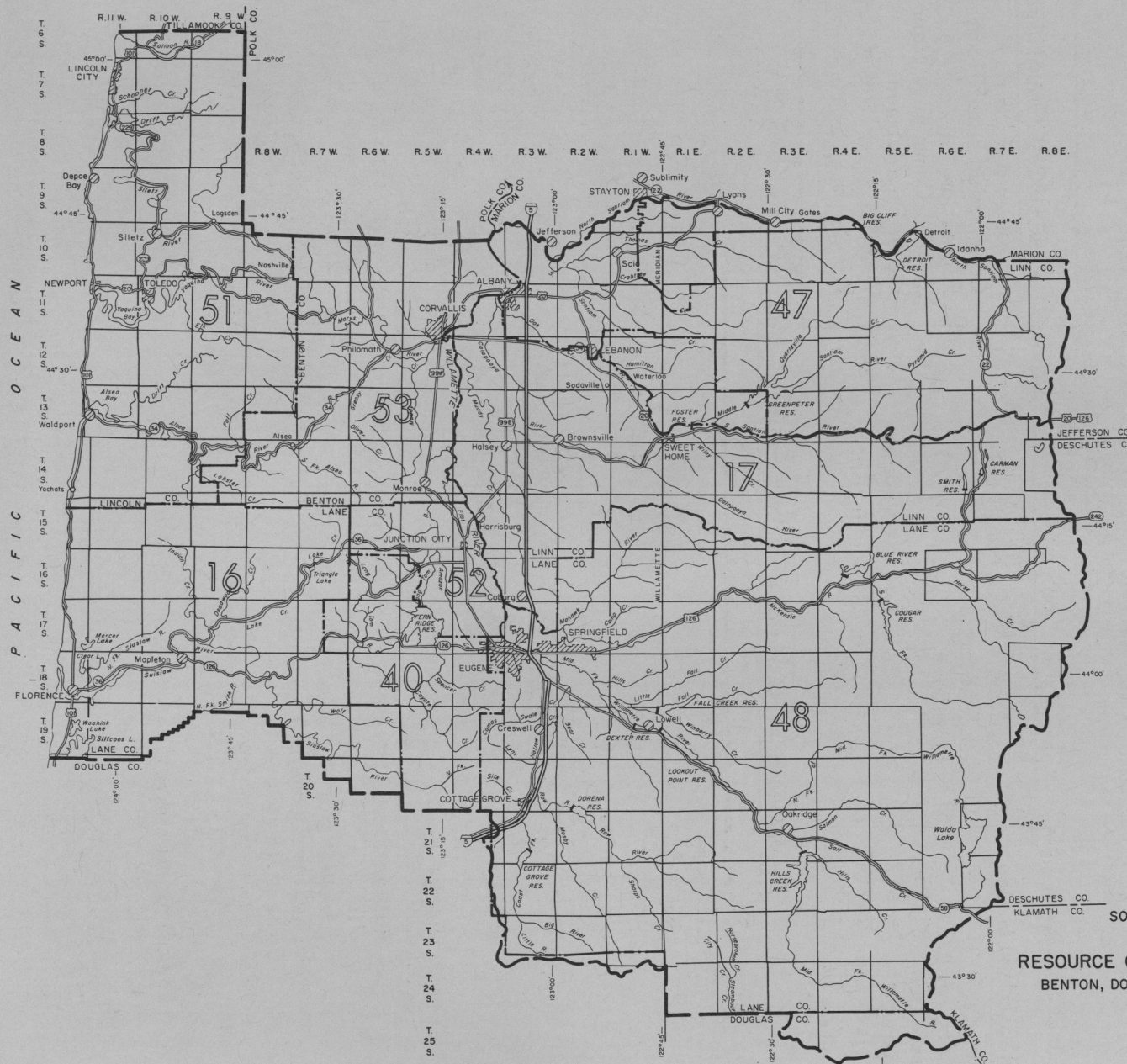
LEGEND

- 16 Siuslaw S.W.C.D.
 17 Linn-Lane S.W.C.D.
 40 Mid Lane S.W.C.D.
 47 East Linn S.W.C.D.
 48 Upper Willamette S.W.C.D.
 51 Lincoln S.W.C.D.
 52 North Lane S.W.C.D.
 53 Benton S.W.C.D.
 --- S.W.C.D. Boundary



SOIL AND WATER CONSERVATION DISTRICTS
 UPPER WILLAMETTE
 RESOURCE CONSERVATION & DEVELOPMENT PROJECT
 BENTON, DOUGLAS, LANE, LINCOLN & LINN COUNTIES, OREGON

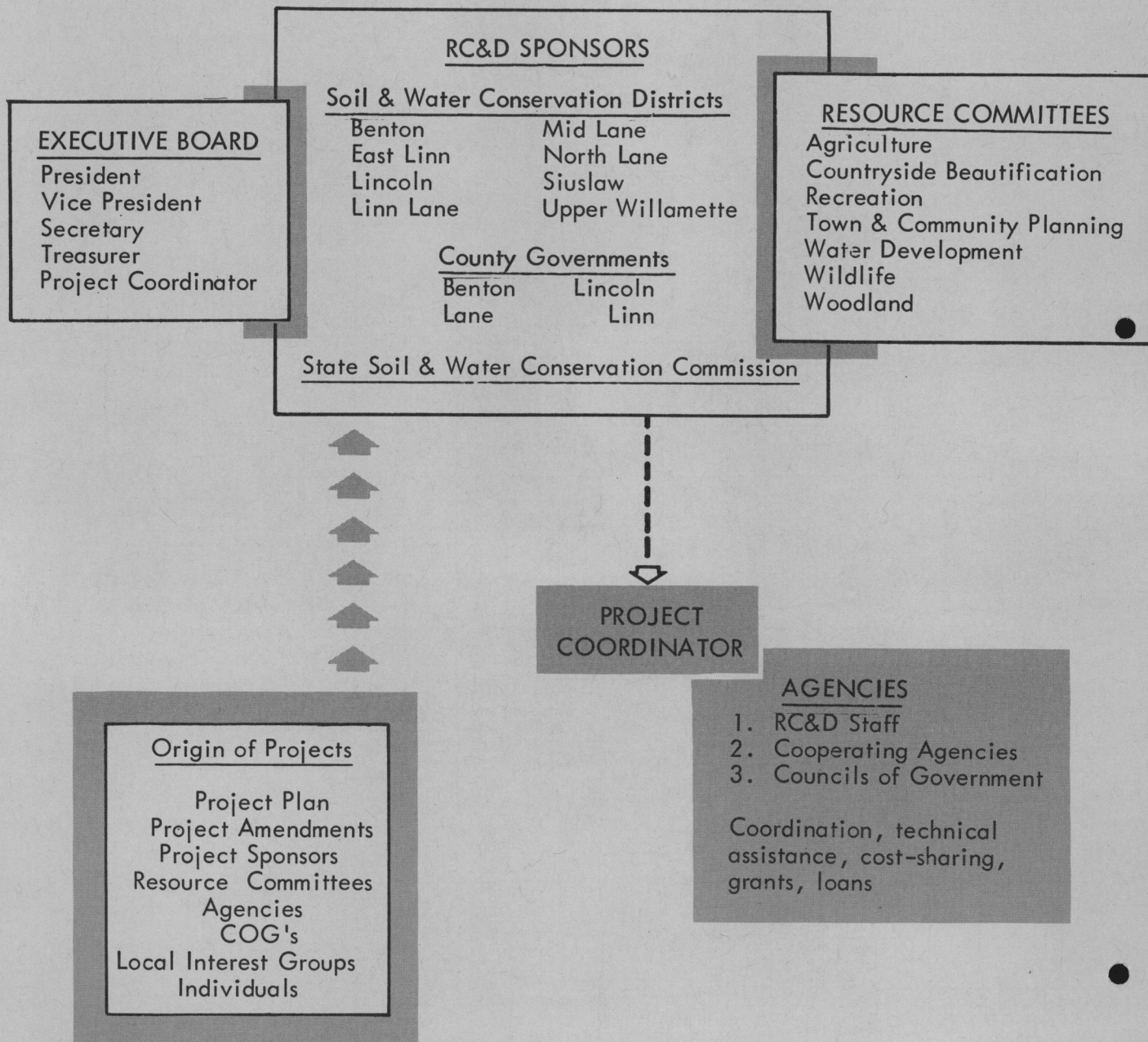
AUGUST 1969
 SCALE 1:140,000
 0 2 4 6 8 10 12 14 16 18 MILES



UPPER WILLAMETTE RC&D PROJECT



ORGANIZATION & OPERATION



ORGANIZATION & OPERATION SUMMARY

RC&D SPONSORS

The RC&D Sponsors are the following Soil & Water Conservation Districts*: Benton, East Linn, Lincoln, Linn Lane, Mid Lane, North Lane, Siuslaw and Upper Willamette; the county governments of Benton, Lane, Lincoln and Linn; and the State Soil & Water Conservation Commission.

EXECUTIVE BOARD

The Executive Board consists of the President, Vice President, Secretary, Treasurer and Project Coordinator. Meetings are called whenever the business cannot wait for a regular quarterly meeting of the Project Sponsors.

RESOURCE COMMITTEES

There are seven Resource Committees--Agriculture, Countryside Beautification, Recreation, Town & Community Planning, Water Development, Wildlife and Woodland. The Chairman of each committee is appointed by the RC&D President and assisted by an Executive Secretary assigned to aid in the work. Representatives from each of the Sponsors are assigned to each of the committees and technical assistance is provided by representatives of various agencies appointed on the various committees. The committees may also include as many interested community leaders as the members feel are needed to adequately fulfill the goals. The Resource Committees establish Long Range Objectives and plan Annual Goals; these include priorities, possible ways of attaining goals, and determining the agency or local people who will do the work.

PROJECT COORDINATOR

The Project Coordinator is a staff officer assigned by the Soil Conservation Service to work full time with the Project Sponsors and the cooperating local, state and federal agencies in carrying out the authorized Project Plan. The U. S. Dept. of Agriculture has designated the Soil Conservation Service to administer the federal part of the program.

AGENCIES

Approximately 40 federal, state, county and local agencies have designated representatives to assist in the coordination, technical assistance, cost sharing, grants and loans necessary for the completion of Project Measures.

COUNCILS OF GOVERNMENT

The established Councils of Government in the Project Area are Oregon District 4 COG (Benton, Lincoln, Linn counties) and the Lane COG. A primary role is to review requests for federal assistance to determine if they are consistent with regional plans.

* Soil & Water Conservation Districts are legal subdivisions of state government organized by local landowners to promote conservation and natural resource development. The State Soil & Water Conservation Commission is appointed by the Governor and supervises the organization and operation of the SWCD's throughout the state.

PROJECT PLAN - PROJECT MEASURES

The Upper Willamette RC&D Project Plan is the comprehensive proposal developed by the project sponsors for accelerating conservation, development and utilization of the resources of the project area.

Project Measures are the actions needed and proposed by local interest groups or individuals for the orderly conservation, development, improvement, and utilization of natural resources of the project area. Project Measures include:

1. Structural measures--construction projects designed to serve a community need, such as dams for irrigation or flood control, canal systems for irrigation, channels for drainage and flood control.
2. Land use and treatment--needed land use adjustments and combinations of practices compatible with the needs and capabilities of the land and the objectives of the people involved.
3. Associated measures--facilities, activities, or enterprises necessary for the utilization, processing, and marketing of natural resource products.
4. Supporting measures--developments or enterprises compatible with project activities.

Project Measures, suggested or specifically listed in the Project Plan and its amendments, may be brought to the RC&D Sponsors by local interest groups or individuals for action. Other projects may be initiated by the RC&D Sponsors, Resource Committees, Agencies, COG's, local groups and individuals. Approval for these proposals is given by the RC&D Sponsors at their regular quarterly meetings.



Little Muddy Creek Flood Prevention Project--Phase 11. Completed channel improvement.

SCS PHOTO 7-3011-4

AGENCY ASSISTANCE

The Upper Willamette RC&D Project is assisted by representatives from:

U. S. Department of Agriculture

Agricultural Research Service	Forest Service
Agricultural Stabilization & Conservation Service	Division of State & Private Forestry
Cooperative Extension Service	Siuslaw National Forest
Economic Research Service	Umpqua National Forest
Farmers Home Administration	Willamette National Forest
Rural Electrification Admin.	Soil Conservation Service

U. S. Department of the Army

Corps of Engineers

U. S. Department of Commerce

National Oceanic & Atmospheric Administration
National Marine Fisheries Service
National Weather Service Office

U. S. Department of Housing & Urban Development

U. S. Department of the Interior

Bureau of Commercial Fisheries	Bureau of Reclamation
Bureau of Land Management	Federal Water Quality Administration
Bureau of Outdoor Recreation	Geological Survey

Small Business Administration

STATE OF OREGON

Department of Agriculture
Department of Environmental Quality
Department of Forestry
Board of Health
State Engineer
Fish Commission of Oregon
Oregon State Game Commission
State Water Resources Board

Executive Department

Economic Development Division
Local Govt. Relations Division

Department of Transportation

Highway Division
Parks & Recreation
Ports Division

Oregon State University
University of Oregon

Willamette Basin Project Committee
Lane Council of Governments
Oregon Dist. 4 Council of Govts.

Many County Departments in Benton, Lane, Lincoln and Linn counties, as well as city planning commissions, city councils etc.

RESOURCE COMMITTEES

Long Range Objectives - Annual Goals

The first action of the Sponsors of the Upper Willamette RC&D Project in 1965 was to develop an organization through which local citizens could meet, set annual goals and take positive actions. At the beginning, a 13-man executive board held quarterly meetings. They also appointed 7 resource committees, which included representatives of the Sponsors, cooperating agencies, councils of government and interested local individuals. The resource committees are responsible for suggesting activities and programs for development of resources.

Three area-wide planning meetings were held in January to prepare the 1971 "Program of Action" for approval by the Project Sponsors. More than 118 attended the Eugene, Waldport and Albany meetings, representing the Soil & Water Conservation Districts, county governments, State Soil & Water Conservation Commission, Councils of Government, special interest groups and interested citizens in the four-county area.

The Annual Goals proposed will help implement the Long Range Objectives already developed. Types of realistic annual goals initiated were:

1. Direction to cooperating federal, state and local agencies, especially those that are RC&D funded:
 - a. Suggested priorities of work.
 - b. Recommended projects or services that should be provided.
 - c. Proposed development of needed new programs.
2. Suggestions to the Project Sponsors for action programs they should consider, including suggested priorities.
3. Consideration of goals and needs of the Councils of Government and others.
4. Direction to the RC&D staff and specialists, including the Community Development Specialist, Biologist, Foresters, Agronomist, Engineers and others.
5. Legislation to be proposed.
6. Action programs such as the Area Beautification Contest (ABC) program, Willamette River Park System program, etc.

The Agriculture Committee has been charged with the responsibility of assisting in proper land use management and related problems. There are 1-1/3 million acres of soil suitable for farming in the Project Area. With the continuous growth in population and industry, realistic priorities and controls need to be established on these lands.

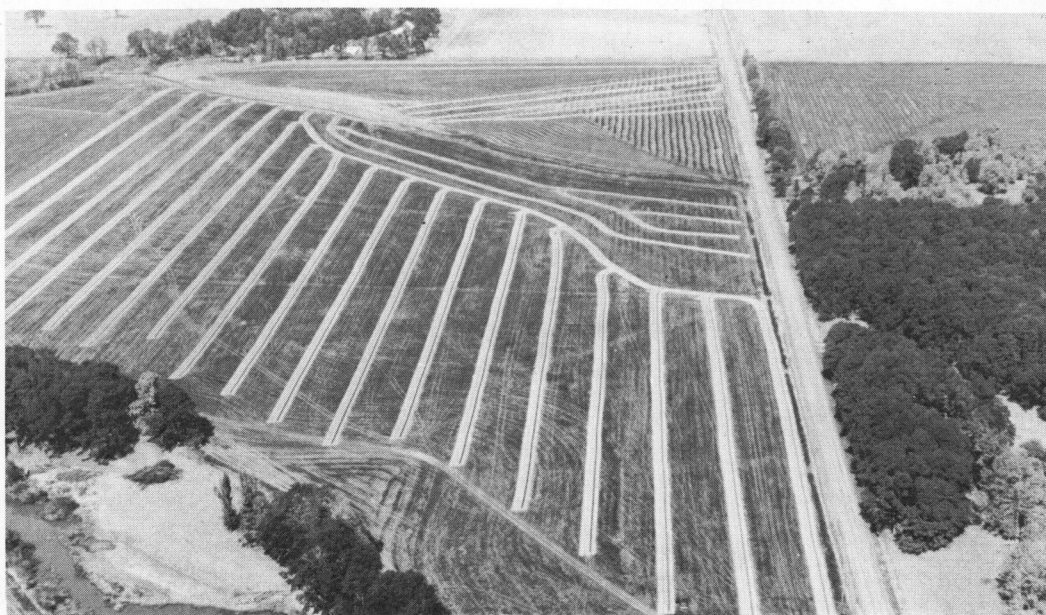
LONG RANGE GOALS

1. Plan for intensified land use as a result of permanent land improvements brought about by providing flood prevention, irrigation and drainage measures.
2. Seek new crops and market outlets to make more profitable use of our improved land resources.
3. Study the feasibility and help in establishment of needed agricultural processing plants.
4. Encourage adequate zoning of agricultural land for protection of Ag-business and compatible land uses.
5. Study the feasibility of reusable industrial water for irrigation.
6. Promote techniques in farming to control or eliminate air and water pollution.

IMMEDIATE GOALS

1. Provide information on feasible alternatives for use of agricultural land.
 - a. Publish and distribute a report that will include marketing, basic resource data and crop alternatives for three major land uses--horticulture crops, field crops, livestock program.
 - b. Encourage a feasibility study for the export market for agricultural crops and encourage development of an export market. The RC&D Sponsors should write a letter to the Governor with copies to the State Dept. of Agriculture and State Economic Development Dept. stating the desirability of state action on this. Particular emphasis should be given to the particular needs of each foreign market, especially for processed agriculture products.
2. Support the Pilot Program for demonstrating the use of industrially heated water financed by the Eugene Water & Electric Board and the Federal Water Quality Administration by co-sponsoring at least one tour with local leaders.

3. Evaluate field trials on bark and/or straw as backfill materials for tile drains in cooperation with Oregon State University. Publish and distribute a report on farmer experience in intensive use of Dayton soils.
4. Sponsor an information program on the need for exclusive farm zoning, and the advantages and disadvantages to land owners and the general public in such zoning.
5. Support local farmer groups in their desire to establish a local alfalfa dehydration and pelleting operation.



In 1967 Charles Curtis, Harrisburg, installed 30,000 ft. of tile. The improved drainage has resulted in conversion to more productive and better paying crops. SCS PHOTO 7-2275-8



Potato harvest of crop grown with hot water irrigation. Second crop will be turnips. Early planting--frost controlled--growing controlled with hot water in sprinklers.

SCS PHOTO 7-2904-5

COUNTRYSIDE BEAUTIFICATION

RONEL PADDOCK,
Chairman

It is the policy of the Countryside Beautification Committee to provide opportunities within the Project Area to enjoy the natural surroundings and to assist in creating a more attractive and inviting environment emphasizing natural and man-made beauty.

LONG RANGE GOALS

1. To assist communities in organizing and carrying out continuing beautification programs.
2. Encourage local, state, and federal agencies to develop roadside scenic viewpoints providing the opportunity to enjoy the natural and man-made beauty.

ANNUAL GOALS

1. Continue the responsibility of sponsoring the Area Beautification Contest program. Establish a contest coordinator in the three areas of the Project--Lane County, Lincoln County and Benton-Linn counties.
2. Contact and encourage power and telephone companies to install their utility lines underground.
3. Contact legislators regarding bills proposed for litter control and similar measures. Support legislation which imposes heavy fines or penalties for littering.
4. Make every effort to encourage appropriate civic groups or clubs to sponsor a state-wide beautification contest.



1970 Area Beautification Contest--Larry Hart, city Manager of Toledo accepting 1st place award.

RICHARDSON'S PHOTO

The abundant forests, lakes, beautiful streams, outstanding scenery, plentiful wildlife, and remote wilderness areas have made tourism and recreation one of the largest industries. To meet the demands of the future, the committee hopes to work toward a balanced recreational development program utilizing all of the resources both public and private.

LONG RANGE GOALS

1. Strive for improvement of the quantity and quality of recreational facilities on public and private lands of the area.
2. Seek and promote increased opportunities through total resource development for recreational enjoyment on public and private lands of the Project Area.
3. Support and promote legislation that will enhance recreational development and opportunities on public and private lands.
4. Coordinate and make available technical information on recreational needs to planning groups and others in long range planning on public and private lands and waters.
5. Seek means to correct pollution which seriously effects recreational opportunities on public and private lands and waters.

ANNUAL GOALS

1. Form a legislative subcommittee and support and promote legislation that will enhance recreational development and opportunities on public and private lands.
2. Inventory rockhound recreation resources in the Project Area and recommend the means for their conservation and use.
3. Support river cleanup projects.
4. Support legislation for a five cent retainer tax on beverage bottles in Oregon.
5. Promote the development of a coordinated recreational development plan for the "Triangle Lake outlet--Lake Creek Falls area."
6. Urge the Oregon State Parks Department to give first priority to the acquisition of the Mt. Pisgah site for a State Park in Lane County and that the Dexter Park site be preserved by acquisition of scenic easements.
7. Write a letter to encourage the extension of the Willamette

River Park Program to include the lower reaches of the principal tributaries as defined in the Willamette Basin Review Study.

8. As an incentive for development of private recreation, encourage and support legislation for more practical trespass laws to protect the landowner.



The Willamette River--a heritage for all to enjoy.

SCS PHOTO 7-2955-9



Alsea Falls--BLM Park--Benton County; one of many recreation sites in the county.

SCS PHOTO 7-2555-8

TOWN & COMMUNITY PLANNING

It is the policy of the Town & Community Planning Committee to encourage the proper use of our land and water resources, emphasizing the orderly growth and economic development of urban areas. In addition, the committee shall support and assist public bodies in the development of needed facilities aimed at maintaining a quality environment.

LONG RANGE GOALS

1. Support the preparation of comprehensive land use development plans for all portions of the Project Area and encourage coordination of comprehensive planning between governmental units.
2. Assist rural communities in the identification of local needs and suggest methods and resources available in solving problems.
3. Encourage the development of a local government and environmental studies program to be included in elementary and secondary school curriculum. Such a program envisions emphasizing the responsibilities of local government in meeting environmental needs.
4. Encourage each county to incorporate a soil scientist service into their regular capabilities and encourage local governments to utilize soil, geological, water resource and other related information in the accomplishment of studies and planning projects.
5. Support the work of city, county and regional planning commissions by holding a series of workshops throughout the Project Area on the need for and advantage of planning for orderly growth.

ANNUAL GOALS

1. Investigate the possibility for developing a newsletter relating to rural communities' activities.
2. Contact local school districts to determine their interest in cooperating with the Project in developing tours and workshops relating to comprehensive planning. Include other youth groups, local officials and other important groups such as builders and realtors. May develop a packet approach which would include lists of films and slides, printed materials, speakers, etc.
3. Develop techniques of displaying soil information for better understanding of how soil relates to community development.
4. Inventory and evaluate soil mapping progress and determine immediate needs.
5. Compile and distribute comparative information regarding planning services throughout the Project. Such information would include per capita expenditure, planning salaries, staff levels and services performed.

6. Encourage local government to participate in flood plain management programs.
7. Propose that utility companies establish proper depth of underground utilities so as not to interfere with proper drainage.
8. Suggest to appropriate County Planning Commissions that proposals for subdivisions be submitted to local Soil & Water Conservation Districts for review and recommendations.



Community Planning Workshop, Newport, Oregon SCS PHOTO 7-3060-4



Subdivision development scattered throughout northern end of Lincoln county.

SCS PHOTO 7-2922-12

The goal of the Committee is the development of definite structural and non-structural programs designed to improve the watershed condition and to provide clean water for beneficial uses. When Watershed needs are satisfied many of the problems that presently result in damage and economic loss will be modified or solved.

LONG RANGE OBJECTIVES

1. Continuing support of urban, county, coastal, water utilities, and state and federal planning groups on those portions of the plans pertaining to water development.
2. Assistance to planning groups by providing information on soils, geology, estuaries, surface and sub-surface water, flood plain mapping, flood plain insurance and other information pertinent to water development.
3. Continual work with groups and agencies to assure that planning for water developments in the Project Area are coordinated and expedited.

ANNUAL GOALS

1. Promote the establishment of an association of water control and other special interest districts and utilities dealing with water development in the RC&D area. The primary purpose of this association would be to develop guidelines and promotional work necessary for formation of a working association of districts.
2. Check into the possibility of recommending changes in the utility location regulations. At present crossing public utilities such as roads, cables, and pipelines are time-consuming and are expensive to the point of blocking the orderly progress of some water development projects.
3. Work with County Boards of Commissioners through their county sanitarians in inventorying the quality and quantity of domestic water supplies in the coastal areas. This would provide basic data toward identifying domestic water projects in this area.
4. Obtain management statements from the Siuslaw and Willamette national Forests for the municipal watersheds located on National Forest lands.
5. People are becoming increasingly aware of the recreation, environmental and wildlife potentials of water development projects. To insure that recreation and wildlife are fully considered, project planners will be urged to work more closely with the RC&D Recreation, Countryside Beautification, and Wildlife committees, and other environmental and recreation groups.

6. Request that the Sponsors submit a resolution to the Willamette Basin Task Force supporting an early approval of the Task Force Report for the Willamette Basin. The resolution to be prepared as soon as the report is prepared, completed and reviewed by the committee.
7. Recommend that the Sponsors prepare a resolution requesting blanket authorization of small watershed projects and Congressional appropriation of planning funds necessary for completion of pre-authorization studies for other federal projects in the RC&D Project Area that are shown in the Willamette Comprehensive Plan.
8. Recommend to the sponsors that the RC&D Project participate in the Coastal Review and Evaluation Committee work.
9. Compile a file and index of water related reports in the RC&D Area.
10. Work with the City of Philomath, Benton SWCD and the Corps of Engineers to assure that the City of Philomath is included in the Marys River feasibility study as a special problem area.
11. Work with the City of Monroe, Benton, SWCD, and Oregon State University to see if the Civil and/or Agricultural Engineering Departments can provide planning time to solve Monroe's flooding problems.
12. It is recommended that the Sponsors consider the following work priorities for calendar year 1971:

<u>Project</u>	<u>Accomplishment</u>
• Oakridge Flood Prevention	Construction
• Little Muddy Flood Prevention-- Phase III and IV	Construction
• Periwinkle Flood Prevention	Preliminary Report
• Heceta Area Flood Prevention	Reconnaissance Report
• Veneta Greenway--Flood Prevention	Work Plan
13. The Water Development Committee will plan a tour for its members to cover all types of water development problems and projects. The Sponsors and other committee members will be invited.

The Wildlife Committee has been charged with the responsibility of seeking means for promoting and improving the valuable fish and wildlife resources in the Project Area. Important considerations include habitat improvement, farmer-sportsman relationships, improved access and pollution abatement.

LONG RANGE GOALS

1. Support measures that will contribute to the wise use of the fish and wildlife resources.
2. Awaken the awareness of the general public to the values that fish and wildlife make in everyday living and encourage owners and managers of wildlife-producing lands to make sound management decisions. Two areas that need attention in the RC&D Area today are: Water pollution in the Willamette River and its tributaries, and vanishing pheasant habitat in the Upper Willamette Valley.
3. Take steps to inform and enlist the support of all groups on wildlife developments by compiling and publishing resource data, tours, demonstrations and news releases, etc.
4. Encourage and support private hunting and fishing developments which enhance and enlarge the wildlife resource in contrast to those which restrict or isolate the resource for private use.
5. Propose and promote the inclusion of a coordinator of Resource Conservation Education in public schools in the office of the State Superintendent of Schools, and the addition of a course in Resource Conservation to the curriculum of public schools in the State of Oregon.
6. Promote and support legislation to strengthen laws which provide for maintenance and enhancement of the fish and wildlife resources.
7. Work toward better understanding between the sportsman and the landowner.

ANNUAL GOALS

1. Inform the public of the effectiveness of animal calls in predator control.
2. Encourage Lane County to develop boat launch sites on major fishing streams where access is now limited. Sites suggested are:
 - a. McKenzie River - below Martin Rapids.
 - b. Lake Creek - below the Horn.

- c. Siuslaw River - Swisshome Area.
 - d. Willamette River - at forks near Westfir.
3. Encourage removal of rocks in Lake Creek (Hwy. 36) at the Horn to improve boating safety through the area.
 4. Determine recent population trends for game fish in the Yachats River, programs in existence, and what long range goals are planned for game fish in the Yachats.
 5. Continue support of the Oregon State Game Commission in their habitat program, especially in the following areas:
 - a. Wood duck nest program.
 - b. Expanding big game habitat plantings in mountain areas.
 6. Develop a list of natural resource agencies in the RC&D Area able to provide instructions in natural resources for teacher training workshops (forestry, soils, and wildlife).
 7. Publicize availability of cost share funds for public "water-based" fish and wildlife developments in RC&D Project areas, where "no other source of funds" is available.
 8. Work with county planning commissions to develop positive comprehensive plans to provide for gravel needs without damaging fish and wildlife habitat--then follow through on compliance. (Study Lane County Plan)
 9. Promote seeding of cover on exposed road cuts and fills to control erosion and prevent siltation. (Example: county roads, real estate developments (sub-divisions), ditch banks).
 10. Encourage protection of wildlife habitat areas in connection with field burning. (Example: fence rows, public lands, road right-of-way.)



Approximately 80% of the Project Area is in forests and woodland. Intensive management of this land is essential to full resource development and, in turn, to the economy of the area. Since timber is a long time crop, the future timber economy is dependent on today's management. These lands are in several classes of ownership, both private and public, each of which has specific management objectives and problems.

The policy of the committee shall be to promote forest management practices which will:

- a. Produce maximum yields of all available resources while at the same time minimizing soil disturbance:
- b. Maintain or improve the quality and quantity of available water;
- c. Reduce pollution of air, water, soil and any other factors which would contribute to the deterioration of the environment.

I. LONG RANGE OBJECTIVE

Accelerate intensive forest land management on private woodland.

ANNUAL GOALS:

1. Maintain and update a list of interested woodland owners.
2. Encourage woodland owners to:
 - a. Develop a conservation plan on all their lands.
 - b. Utilize available forestry assistance.
 - c. Join the Small Woodland Association.
 - d. Have their tree farm certified and issued signs by the Industrial Forestry Assn.
 - e. Use the services of consulting foresters where applicable.
3. Produce a monthly forestry column for community newspapers in the RC&D area.
4. Aid the woodland owners in the enactment of suitable zoning regulations to preserve woodland areas for exclusive woodland use. Work toward uniform zoning between counties.
5. Support or develop legislation for the development of equitable tax laws to encourage landowners to properly manage their forest land.
6. Request additional funds from the U. S. Forest Service, Division of State & Private Forestry, to accelerate the hardwood inventory.

7. Assist the efforts of local Soil & Water Conservation Districts in:
 - a. Developing conservation cooperative agreements with timber companies in the Project Area.
 - b. Have the SCS provide soil interpretations and soil surveys to cooperating companies.
8. Work in cooperation with the Small Woodland Association, and invite the SWA to have representatives on the RC&D Woodland Committee.

II. LONG RANGE OBJECTIVE

Develop new and better markets.

ANNUAL GOALS:

1. Participate in a demonstration of equipment for woodland owners to be held in Linn County, June 5, 1971, in conjunction with the Small Woodland Association.
2. Sponsor a meeting with all the post-peeler plant operators in the Project Area on February 11, 1971.
3. Participate in "Grasslands '71" project by showing uses of small roundwood products.
4. Inform wood-using industry on the availability of services of Utilization & Marketing specialists available in the Project Area.
5. A letter of inquiry will be written to various public agencies (SCS, Corps of Engineers, State Highway Dept., etc.) regarding their use of wooden fencing materials. We will ask them:
 - a. Their present use of wood and include information on comparisons of strength and durability of steel and wooden fence posts.
 - b. Are specifications written for the use of wood and, if not, could this be done?
6. Develop additional markets to utilize materials not now saleable that can be harvested from forest lands. Investigate such things as special studies leading to improvement of specific markets, raw materials inventory, capital investment, and costs of harvesting and manufacture.
7. Promote and develop uses of alder with special emphasis on the coastal area.

III. LONG RANGE OBJECTIVE

Sponsors will work with all land-managing agencies in management and utilization of their resources.

ANNUAL GOALS:

1. Members of the RC&D Sponsors will attend hearings and take positive action on reviews of land management agencies' multiple-use programs and plans.
2. Request the SCS accelerate completion of soil surveys in the Lane Survey Area by extending the SCS-BLM support contract to cover BLM land in the Siuslaw drainage portion of the Lane Survey Area.



Enlarging a concrete patio by utilizing "Patio Pads" cut from local oak. About 4 inches thick, these pads are usually treated with a preservative and bedded in sand for drainage.

OREGON FOREST DEPT. PHOTO



Installation of wood fencing with a hydraulic post driver is easy. A driven roundwood post is more solid than a tamped one, making it easier to nail fencing.

OREGON FOREST DEPT. PHOTO



RESOURCE BOOKLETS AND STUDIES

Listed below are booklets and studies containing information on the use of the Project Area's resources. Some have received funding from RC&D, others were budgeted by the various counties and all contain significant information pertinent to the goals of the Resource Committees. Where indicated, the booklets are available from the Agency developing the material, or at the office of the Project Coordinator, 1307 Lincoln St., Eugene, Oregon 97401.

- "Feasibility of Establishing Alfalfa Dehydrating Plants
in Northwest RC&D Project Areas" July 1966
- "Economic Potentials for Baling Wood Shavings and
Sacking Sawdust - in 4 Western RC&D Project Areas . . March 1967
- "Utilization of Bark" June 1967
- "Land Use Planning Assistance" Sept. 1969
- "Fish & Wildlife - List of Films & Colored Slides" . . Jan. 1971

Benton County:

- "An Appraisal of Potentials for Outdoor
Recreational Development, Benton County" Sept. 1969
- "Benton County Long Range Planning Report" 1968

Lane County:

- "An Appraisal of Potentials for Outdoor
Recreational Development, Lane County" Feb. 1969
- "Lane County Long Range Planning Report,"
available from the Lane Cooperative
Extension Service Feb. 1970
- "Boaters & Canoeist Guide Book" --Dexter to Springfield

Linn County:

- "An Appraisal of Potentials for Outdoor
Recreational Development, Linn County" Nov. 1968
"Planning for Tomorrow in Linn County,"
available from the Linn Cooperative
Extension Service 1967
"Food Processing Opportunities--Harrisburg, Oregon,"
available from the Pacific Power & Light Co., Portland.

Lincoln County:

- "Central Oregon Coast" --Nine reports in this series
covering an area served by the Central Lincoln
People's Utility District, 255 SW Coast Hwy.,
Newport 1969

The following publications were prepared by the Utilization and Market-
ing Forester, State of Oregon Forestry Department, assigned to the Upper
Willamette RC&D Project:

- "Forest Statistics for the Upper Willamette
Resource Conservation & Development Program" June 1966
"Wood-Using Industries of the Upper Willamette
RC&D Project Area - a utilization report and
directory" --Original publication, December
1966; updated July 1969
"A Directory of Bark Producers and Facilities
in Benton, Lane and Linn counties March 1968
"Post Driving Demonstration - Crow High School" June 1968
"List of Log Truck Haulers for Small Woodland Owners" Aug. 1968
"The Market for Fireplace Wood in the Eugene
Area" - study Feb. 1967
"Bark for Agricultural Uses" - study March 1967
"Market for Wood Pallets" - report Dec. 1968
"List of Contract Tree Planters" Feb. 1969
"A Report on Oregon White Oak for Patio Pads" Aug. 1970
"Small Roundwood Products and Split Cedar Fencing" Nov. 1970



1971 WORK PLAN

<u>SPONSOR</u>	<u>PROJECT</u>	<u>1971 GOAL</u>
Benton SWCD	Monroe, City of	Complete Reconnaissance study on flood water problems, and review with city.
	Philomath, City of	Review flood water and soil problems with city.
East Linn SWCD	Conservative Baptists Assn. Camp	Complete construction of proposed dam.
	Grand Prairie PL 566	Issue contract on 1st section--Cox Creek.
	Lacomb Irrigation	Continue weir installation.
	Albany, City of	Begin soil survey in the area to provide the city with up-to-date maps and interpretations.
	Periwinkle Creek	Complete Work Plan and first stage of construction.
Lincoln SWCD	Flood Plain Mapping	Complete small scale flood plain map.
	Soil Surveys:	Publish.
	Alsea Soil Survey	Complete soil correlation of all coastal soils.
	Coastal Soils	Provide soils map and interpretations.
	Coastal Community	
Linn Lane SWCD	Petrified Woods	Begin inventory of petrified woods in Holley Dam area.
	Muddy Creek Irrigation	Construct improved intake of existing irrigation structure on the McKenzie River using FHA-RCD loan.
	Little Muddy Creek Flood Prevention--Phase III	Complete construction of third stage and design for fourth phase.
	North Brownsville Flood Prevention	Complete construction using local funds.
	Brownsville Fish Ladder	Complete construction.
Mid Lane SWCD	Veneta Flood Prevention	Complete Project Measure Work Plan.

<u>SPONSOR</u>	<u>PROJECT</u>	<u>1971 GOAL</u>
North Lane SWCD	Lower Amazon-Flat Creek PL 566	Complete Amazon channel and begin construction on Flat Creek.
	Junction City, City of	Plan scenic park strip with city along watershed channels. Complete soil survey report.
	Awbrey Park School Drainage	Design project and complete construction using FHA-RCD funds.
	Fern Ridge Irrigation	Complete Project Measure Work Plan.
Siuslaw SWCD	Heceta Area Flood Protection	Complete Reconnaissance survey.
Upper Willamette SWCD	Cloverdale PL 566	Obtain planning authorization. Complete preliminary engineer- ing study.
	Dearborn Island Flood Prevention	Complete construction using local and FHA loan funds.
	Deerhorn Flood Control	State Office review of Prelim- inary Report.
	Oakridge, City of	Present soil survey report.
	Oakridge Flood Prev.	Complete construction.
	Willakenzie PL 566	Complete construction.
Benton County	Flood Plain Mapping: Small scale Detailed	Complete by SCS. Complete by Corps of Engineers.
Lane County	Flood Plain Mapping: Seavy Loop River Road	Review and print final report. Complete survey and Preliminary report.
	Storm Outlet Inventory	Complete by SCS.
	Sewer & Water Studies	Continue study and develop general plan.
Lincoln County	Lincoln County Water Study	Begin study as requested.
Linn County	Flood Plain Mapping: Small Scale Detailed	Complete and present to county. Complete by Corps of Engineers.

NOTES....

NOTES