

# TRIAD

OREGON STATE UNIVERSITY



1926-2001

service  
fellowship  
cooperation

May 24, 2001

To: All Members and Friends of OSU Triad

It is an honor and pleasure for me to extend my warmest greeting to all of you as we celebrate the 75<sup>th</sup> anniversary of Triad at Oregon State University. It is said that as adults, we are defined by the experiences encountered over our lifetimes. In this regard, organizations such as Triad are no exception. We are the sum of our experiences and looking back, we should be very proud of where we have been, most satisfied with where we are, and completely optimistic about what we can become.

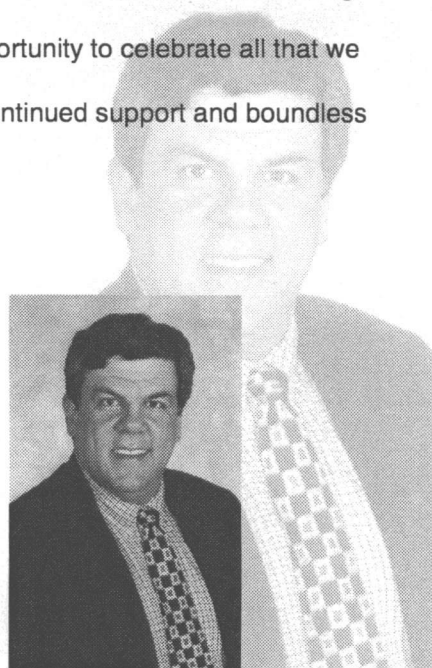
Triad has grown and diversified since our beginnings in 1926. Please take the opportunity to read about the early history of Triad that is included in this book. But don't stop there. Find the time to talk with some of our current members including Bob Henderson, Ken Munford, and Pete Smith, who have been here for the 25<sup>th</sup> and 50<sup>th</sup> anniversaries and who possess the institutional memory of this organization. While you are at it, chat with Sally Malueg who was the first woman officer of Triad in 1985-86 and Mary Kelsey who one year later was named the first woman president. Stop to have a conversation with some of our newer members to get their perspective on the Triad of the 21<sup>st</sup> Century.

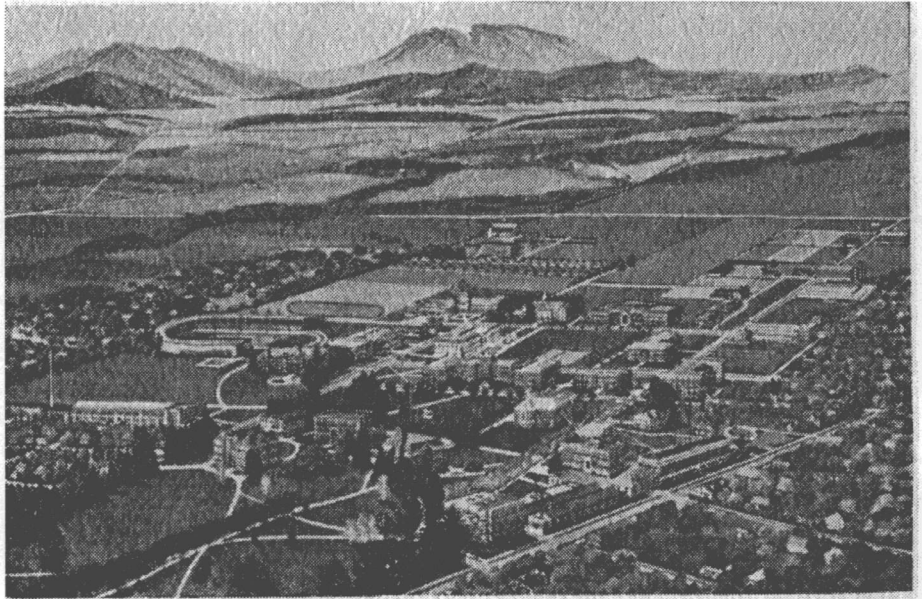
As we think about our future, let us remember the three words that represent our values: Fellowship, Cooperation, and Service. What are the sorts of things that we can do to assure that this triad stays strong? While lunch meetings, special events, and scholarship fundraising are all important activities, our strength and vitality lies in the members past, present, and future. Today is an opportunity to celebrate all that we have done and all that we can become. Thank you one and all for your continued support and boundless enthusiasm.

With warmest personal regards,

Redacted for privacy

Leonard H. Friedman





### The OSC Campus Quadrangles-

as they appeared in the mid 1920s at the time Smitty Schmitt talked a group of his colleagues into founding the luncheon club which became the Triad Club.



### The Triad Club Insigne-

came from the pen of J. Leo Fairbanks, charter member of the Club, who for many years served as head of the Art Department

Leo Fairbanks



## Charter Members

**Lee Cleveland Ball**  
Assistant Professor of Accounting

**Howard Phillips Barss**  
Professor of Botany and Plant Pathology

**Arthur George Bristow Bouquet**  
Professor of Vegetable Gardening

**James Frederick Bursch**  
Assistant Professor of Psychology and Education

**John Randolph DuPriest**  
Professor of Mechanical Engineering

**John Leo Fairbanks**  
Professor of Art

**Robert Henry Hager**  
Coach of Basketball

**Roy Reno**  
Assistant Professor of Political Science

**Charles Leslie Johnson**  
Professor of Mathematics

**J. Shirley Jones**  
Professor of Agricultural Chemistry

**William Alexander Kearns**  
Director of Physical Education and Intercollegiate Athletics

**Hyman Meltzer**  
Instructor in Psychology and Education

**Henry Richard Patterson**  
Professor of Logging Chemistry

**Floyd Elba Rowland**  
Professor of Industrial Chemistry

**Alfred C. Schmitt**  
Professor of Finance and Administration

**Joseph Ellsworth Simmons**  
Assistant Professor of Bacteriology

**Francis Lawrence Snow**  
Professor of Industrial Journalism

**Thurman James Starker**  
Professor of Forestry

**Earl William Wells**  
Instructor in Public Speaking

**Ernest Herman Wiegand**  
Professor of Horticultural Products



## THE TRIAD CLUB:

### "HOW IT GOT STARTED" AND VARIOUS EVENTS SINCE

**On December 6, 1927, Alfred C. Schmitt, Professor of Finance and Administration, wrote the following letter to Professor Arthur G. B. Bouquet:**



Alfred C. Schmitt

In reply to your request for a statement as to how the Triad Club got started I have the following to say: After I left the bank in the spring of 1922 and I had arranged to teach in the Oregon State [Agricultural] College I made a trip East to visit a number of the leading educational institutions in the Central West and in the east. . . . [He went on to report that they all had faculty clubs to which he was taken for lunch.]

When I returned to the college to take up my work in the fall of 1922 I realized that there was no faculty organization here which sponsored weekly luncheons. I talked it over with President Kerr and suggested that we should have some sort of an organization that would give members of the faculty an opportunity to meet together and talk over their problems. He suggested that I form such an organization.

To start with I invited a few kindred spirits to meet weekly around a luncheon table at a place on Jefferson Street, near the Co-op, called "Eats." In this group were Dean G. W. Peavy [Forestry], Dean E. D. Ressler [Vocational Education], Prof. R. R. Hewitt [Political Science], Editor E. T. Reed, Prof. F. L. Snow [Industrial Journalism], Prof. F. C. Kent [Mathematics], Prof. W. H. Ellison [History - not to be confused with another history professor, Joe Ellison, who became a member of Triad Club in 1928-29] and others. We met there weekly during the first two years. We felt that we got a great deal of enjoyment and real satisfaction from our weekly meetings and discussions. During our luncheon conference we at various times discussed the feasibility of organizing a faculty club here with quarters for game rooms and a lunch room.

After discussing the situation again with President Kerr I started in at the beginning of my third year [1925] at the college to take definite steps towards organizing a luncheon club, which later on became the Triad Club. I first talked the situation with Professor Hewitt . . . [who] thought favorably of it. We then talked it over with Professor T. J. Starker [Forestry], Prof. E. H. Wiegand [Horticultural Products], Professor F. E. Rowland [Industrial Chemistry], Prof. H. P. Barss [Botany and Plant Pathology], Prof. J. R. DuPriest [Mechanical Engineering], Prof. J. F. Bursch [Psychology and Education], Prof. H. R. Patterson [Logging Engineering], Prof. L. C. Ball [Accounting], Professor J. E. Simmons

[Bacteriology] and others and arranged for a luncheon to talk organization and the formation of a regular luncheon club. [A. G. B. Bouquet (Vegetable Gardening), J. L. Fairbanks (Art), R. H. Hager (basketball coach), J. S. Jones (Agricultural Chemistry), H. Meltzer (Psychology and Education), F. L. Snow (Industrial Journalism), and E. W. Wells (Public Speaking) apparently were among the "others" that Professors Schmitt and Hewitt consulted as they also were among the initial eighteen charter members of the Club. At their luncheon meeting on January 26, 1926, members would decide that there should be twenty charter members and Professors C. L. Johnson (Mathematics) and W. A. Kearns (Director of P. E. and Intercollegiate Athletics) were invited to join.]

The idea of a weekly luncheon club where an opportunity was offered for free discussion and social intercourse appealed to the members of the faculty to whom the matter was broached. In this way the Triad Club got its beginning. The matter of adopting a name and a constitution involved a good deal of discussion and consideration. Most of our time the first year was taken up in determining just how the group should be constituted and what was to be our permanent name.

At the luncheon meeting of the group on November 18, 1925, officers were elected and minutes for the first time were kept. According to the latter, "The Knights of the Round Table Faculty Club met at the Hotel benton for 12 o'clock luncheon" and the following officers were elected:

President . . . . . A. C. Schmitt

Vice President . . . . . H. P. Barss

Secretary & Treasurer . . . . . L. C. Ball

Counselors:

One Year . . . . . F. E. Rowland

Two Years . . . . . R. R. Hewitt

Three Years . . . . . E. H. Wiegand

Four Years . . . . . J. R. DuPriest

Next the Club began the process of choosing an official name. At its meeting on December 2, 1925, a committee was appointed "for a name" with H. P. Barss as chair. However, at the Club meeting on January 13, 1926, he reported that "the committee had been functioning but no definite name had been selected." As a result, members agreed to his proposal that each member suggest two names and then the membership in a written ballot would vote their first, second and third choices. At the Club luncheon on January 20, 1926, Professor Barss presented the list of proposed names as ranked by members. The minutes did not list the most popular ones but it didn't matter as, before any further action could be taken on the list, according to the minutes,

Professor Fairbanks [of the Art Department] submitted a drawing of a triangular design as a suggestion for an emblem.

Moved by Bouquet that "The emblem 'Triad' be used as a name with a view of designing the emblem for the club." Passed with one vote against. Moved that the vote be made unanimous. Passed. "Triad" was unanimously chosen as a name.

The luncheons were held in Hotel Benton until the fall of 1929. During those early years, a Triad event occurred that is striking evidence of how times have changed. On February 2, 1926, the Club hosted all the College faculty in a "Faculty Feed" at Hotel Benton. Among the bills the arrangements committee submitted to the Club was \$1.80 "for cigarettes for guests."

At this time, plans for the Memorial Union Building, about to be constructed, were being made and Triad members were consulted as to the faculty men's accommodations that should be included in the building. They responded that, in addition to a faculty men's lounge, there should be a "separate room which would accommodate two billiard or pool tables, at least" and "a lavatory" that ideally would connect to both the lounge and the game room. (The building, when constructed, would include both a faculty men's lounge and a game room on the third floor but they were some distance apart and the men's lavatory was not "connected" to either one.)

The luncheons were moved to the Corvallis Hotel in the fall of 1929, where they would remain for 20 years. It was about 1950 that the luncheons finally were moved to the Memorial Union Building on campus but for a brief interim just prior to that move they were held, for reasons unknown, at Wagner's (a restaurant at the southwest corner of Fourth and Madison which the students affectionately called the "Greasy Spoon"). At that time, the price of the ten luncheons each quarter was \$6.00. As to the quality of the food at Triad luncheons, at least on one occasion the secretary reported the menu. This was the luncheon on October 28, 1943, presumably at the Corvallis Hotel, and the menu was as follows:

Twenty-eight members of Triad sat down at 12:15 p.m. to an enjoyable and nourishing menu of boiled beans, mashed spuds, spaghetti flavored with hamburger, and gelatin salad with rice pudding and raisins for dessert.

The first Triad picnic was held at the end of the academic year in 1927. It was in Avery Grove (now Avery Park). At least on one occasion (in May, 1931) it was held in Bryant's Park in Albany. That may be at least a partial explanation for the low price of the luncheons.

It is of some interest to note that at the luncheon on October 29, 1936, a straw vote was taken of the 24 members present as to their preference in the upcoming presidential election in November. The results of the 1936 election, of course, proved to be one of greatest landslides in the history of presidential elections. However, the straw vote at the Triad luncheon was as follows::

Landon	15 votes
Roosevelt	9 votes

For many years, the Secretary took minutes at each luncheon and, since attendance was compulsory, the roll was called. Absences must be officially excused and in advance. If a member was absent without an excuse, he was fined (initially it was 25 cents). It was not until early in 1940 that compulsory attendance was dropped. Since then, to encourage attendance, all active members are charged for six luncheons a term whether they are present or not.



In 1978, the most important event since Triad was founded occurred. After much debate over several years, some of it rather heated, the first woman member, Lois A. McGill (Food Science & Technology), was elected a member. The second one was Sally Malueg (Foreign Languages), who was elected in 1983. Once male members discovered how greatly improved the Club was with the addition of women members, they elected them enthusiastically, in the next two years, six more women becoming Triad members - viz., Lisa Ede (English), Zoe Ann Holmes and Mary Kelsey (Food and Nutrition), JoAnn Leong (Microbiology), Nancy Powell (Library) and Lucy Skjelstad (Horner Museum). In 1987, Mary Kelsey became the first woman member to be elected President of Triad and in 1994 Kinsey Green became the first serving dean to be invited to membership.

More recently, another event has occurred that also is long overdue. As a result of the efforts of several Triad members led by Irma Delson (Oceanography), a Triad Scholarship Fund was established during the 2000-2001 academic year as part of the celebration of the Club's 75<sup>th</sup> anniversary. The scholarships are to be awarded to undergraduate or graduate students for outstanding service to the campus community. Thus, the third purpose of the Triad Club, "Service," finally is being achieved.



**IN THE 1930's Triad Club met at the Corvallis Hotel. (front row) Lee Ball, Earl Wells, H. P. Barss, Walt Jones, John Burtner, Byron Arnold, Herm Scullen, Joe Ellison; (second row) Bill Lawrence, Al Lund, Art Bouquet, J. S. Jones, George Cox, Andy Anderson, Charlie Thomas, Fred Cuthbert; (back row) Wilbur Powers, I. R. Jones, Mike Simmons, Frank Parr, Herb Laslett, Herb Nelson, Milt Nelson, Sam Graf, Hoot Gibson, Ernie Vaughn, Chuck Keevil, Walt Brown, Earl Gilbert.**



To celebrate its 50th anniversary, Triad published and distributed a booklet covering the years 1926-76. A silver key and a paperweight were also created and given to members. The key, which was packaged in a small, dark-colored, translucent box, is inscribed "USA 1776/1976" on one side and "Triad 1926/1976" on the other. The paperweight is of clear, heavy glass and depicts both sides of the key and the Triad emblem. Examples of both are in the O.S.U. archives.



New members have long been welcomed into Triad with an initiation ceremony. In the early years the ceremony seems to have been a long and solemn one. For a while it concluded with instructions to the sergeant-at-arms to place "a Triad badge upon the left lapel of the candidate's coat." Three examples of such a badge are known to exist. Donald Hunt, who joined in 1961 has his. Another is in the Horner Museum collection and the third is in the O.S.U. Archives.



1927-28

**President**

J. E. Simmons

**Vice President**

T. J. Starker

**Secretary**

Lee Ball

**Treasurer**

Gil Gilbert

**New Members**

Ernest Everton Bosworth  
Associate Professor of Accounting  
Frederick Charles Kent  
Associate Professor of Mathematics

Alfred Gunn Lunn  
Professor of Poultry Husbandry

Charles Arthur Mockmore  
Assistant Professor of Civil Engineering

Reginald Heber Robinson  
Chemist, Agricultural Experiment Station

Herman Austin Scullen  
Assistant Professor of Entomology

Charles Edwin Thomas  
Associate Professor of Mechanics and Materials  
Earnest Van Court Vaughn  
History

**Officers and New Members**

1925-26

**President**

Smitty Schmidt

**Vice President**

Horsepower Barss

**Secretary**

Lee Ball

**Counselors**

Blub Hewitt

Ernie Wiegand

J. R. DuPriest

Floyd Rowland

**New Members**

Earl C. Gilbert  
Associate Professor of Physical Chemistry

Sigurd Harlan Peterson  
Associate Professor of English

1926-27

**President**

Horsepower Barss

**Vice President**

Blub Hewitt

**Secretary**

Lee Ball

**Treasurer**

Gil Gilbert

**New Members**

Walter Sheldon Brown  
Professor of Horticulture

Heber Howard Gibson  
Professor of Agricultural Education

George Robert Hyslop  
Professor of Farm Crops

William Evans Lawrence  
Associate Professor of Plant Ecology

Captain Thomas McCormick  
Assistant Professor of Military Science and Tactics

James Carey Othus  
Instructor in Mechanics and Materials



# 1928-29

## President

Ernie Wiegand

## Vice President

Popper Snow

## Secretary

Lee Ball

## Treasurer

Earl Wells

## New Members

William Ballantine Anderson  
Professor of Physics

Ray Boals  
Assistant Professor of Mechanical Engineering

George Bryan Cox  
Professor of Industrial Arts

Joseph Ellison  
Assistant Professor of History

Idwal Ralph Jones  
Assistant Professor of Dairy Husbandry

Milton Nels Nelson  
Professor of Economics and Sociology

Robert Ambrose Osborn  
Assistant Professor of General Chemistry

Wilbur Louis Powers  
Professor of Soils

# 1929-30

## President

Walt Brown

## Vice President

Herm Scullen

## Secretary

Bozie Bosworth

## Treasurer

Earl Wells

## New Members

John Cole Burtner  
Associate Director, College News Service

Henry Hartman  
Professor of Pomology

Herbert Reynolds Laslett  
Professor of Psychology

Carl Allen Lodell  
General Manager, Associated Students

Daniel Vandersall Poling  
Lecturer, Radio Study

Edwin Thomas Reed  
College Editor

Major Herbert Alonzo Wadsworth  
Associate Professor of Military Science  
and Tactics

George Alfred Williams  
Assistant Professor of Mathematics

# 1930-31

## President

Charlie Thomas

## Vice President

Art Bouquet

## Secretary

Lee Ball

## Treasurer

Earl Wells

## New Members

Frederick Alexander Cuthbert  
Instructor in Landscape

Charles Buren Mitchell  
Professor of Public Speaking

Frank W. Parr  
Associate Professor of Education



## 1931-32

### **President**

Art Bouquet

### **Vice President**

Andy Anderson

### **Secretary**

J. S. Jones

### **Treasurer**

Charlie Johnson

### **New Members**

Byron Arnold  
Instructor in Organ, Piano,  
Musical History, and Theory

Willis Pierre Duruz  
Professor of Pomology

Samuel Herman Graf  
Director of Engineering Research

Charles Samuel Keevil  
Professor of Chemical Engineering

Walter Richard Jones  
Assistant Professor of Aeronautical Engineering

Herbert Benjamin Nelson  
Instructor in English



## 1932-33

### **President**

Al Lunn

### **Vice President**

Bill Lawrence

### **Secretary**

G. B. Cox

### **Treasurer**

Fred Cuthbert

## 1933-34

### **President**

Charlie Johnson

### **Vice President**

J. S. Jones

### **Secretary**

John Burtner, I. R. Jones

### **Treasurer**

Chuck Keevil

### **New Members**

William Edmund Milne  
Professor of Mathematics

Frederick Earl Price  
Agricultural Engineer

Roger John Williams  
Professor of Chemistry



**1934-35**

***President***

Bill Lawrence

***Vice President***

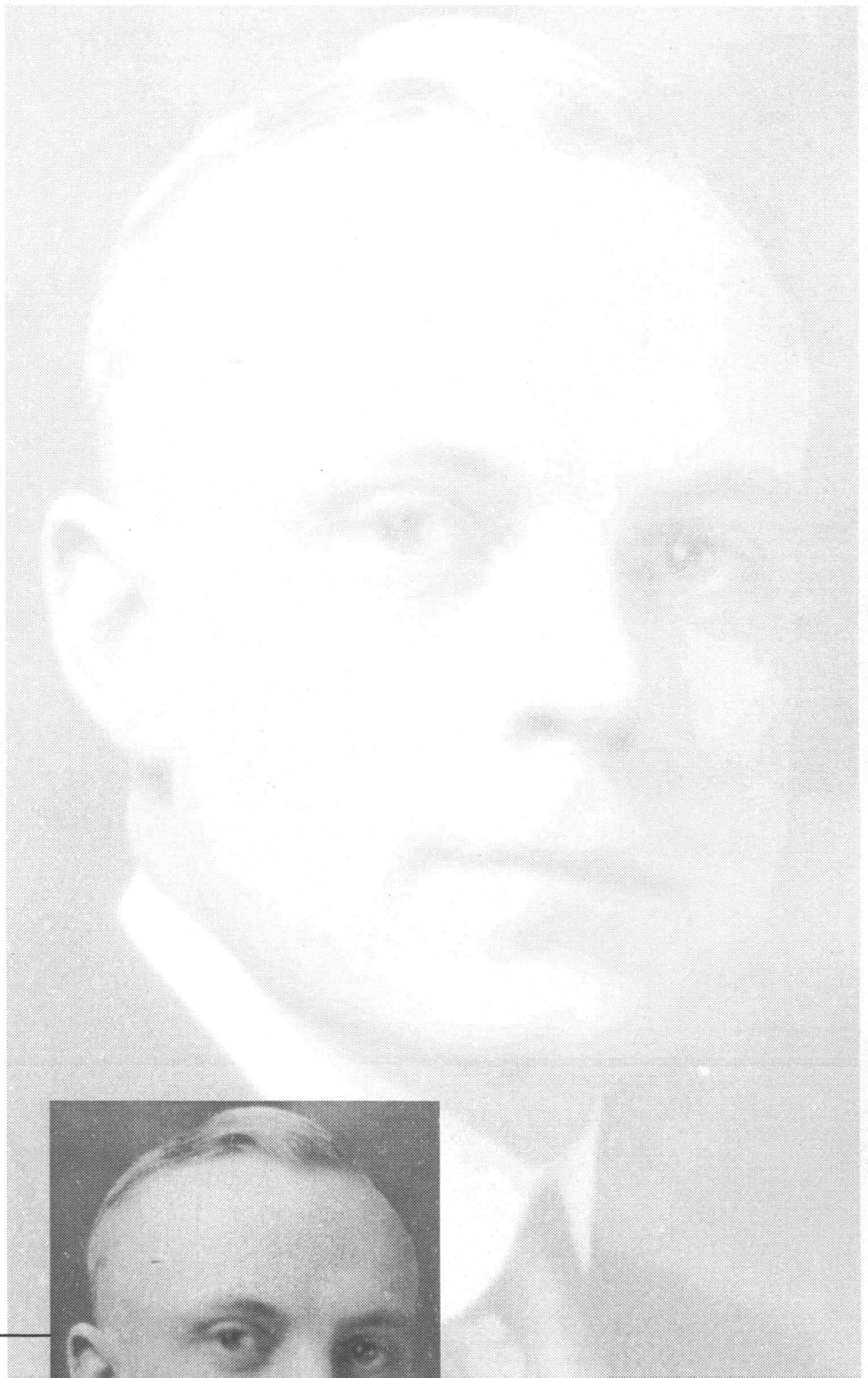
Jay See Othus

***Secretary***

Walt Jones, Hoot Gibson

***Treasurer***

Bozzie Bosworth



## 1935-36

### **President**

Earl Wells

### **Vice President**

Charlie Mockmore

### **Secretary**

George Williams

### **Treasurer**

Milt Nelson

### **New Members**

Roland Eugene Dimick  
Assistant Professor, Fish and Game Management

Herbert Reeves Sinnard  
Associate Professor of Agricultural Engineering

Edwin Arthur Yunker  
Assistant Professor of Physics



## 1936-37

### **President**

J.S. Jones

### **Vice President**

Sam Graf

### **Secretary**

Herb Nelson

### **Treasurer**

Gil Gilbert

## 1937-38

### **President**

Herm Scullen

### **Vice President**

Gee Bee Cox

### **Secretary**

Heinie Hartman

### **Treasurer**

Wilbur Powers

### **New Members**

Ira Shimman Allison  
Professor of Geology

George Walter Gleeson  
Professor of Chemical Engineering

Ernst Theodore Stuhr  
Associate Professor of Pharmacology  
and Pharmacognosy

Edward Fritchhoff Torgenson  
Associate Professor of Soils



## 1938-39

### **President**

Lazzie Laslett

### **Vice President**

Ted Milne

### **Secretary**

Herb Sinnard

### **Treasurer**

Roger Williams

### **New Member**

Benjamin Franklin Ruffner  
Professor of Aeronautical Engineering



## 1939-40

### **President**

Sam Graf

### **Vice President**

George Williams

### **Secretary**

Ben Ruffner

### **Treasurer**

Earl Price

### **New Members**

Arthur Lemuel Albert  
Professor of Communication Engineering

Glenn Almer Bakkum  
Professor of Sociology

Dan Williams Poling  
Assistant to Dean of Men

Frank Paden McWhorter  
Plant Pathologist

## 1940-41

### **President**

Gil Gilbert

### **Vice President**

Heinie Hartman

### **Secretary**

Ed Yunker

### **Treasurer**

Torgie Torgerson

### **New Members**

Joseph Shirley Butts  
Professor of Biochemistry

Grant Stephen Feikert  
Assistant Professor of Electrical Engineering

William Donald Wilkinson  
Assistant Professor of Geology

1942-43

**President**

Ted Milne

**Vice President**

Ernie Stuhr

**Secretary**

Ira Allison

**Treasurer**

Grant Feikert

**New Members**

John Clifton Garman  
Assistant Professor of Physics

William Henry Dreesen  
Professor of Economics

George Youlle Martin  
Superintendent of College Press and  
Clerical Exchange

Albert Wilbur Schlechten  
Associate Professor of Mining Engineering

George Harwood Schroeder  
Assistant Professor of Forestry

Clyde Walker  
Extension Agricultural Engineer

1941-42

**President**

Pete Peterson

**Vice President**

Earl Price

**Secretary**

Art Albert

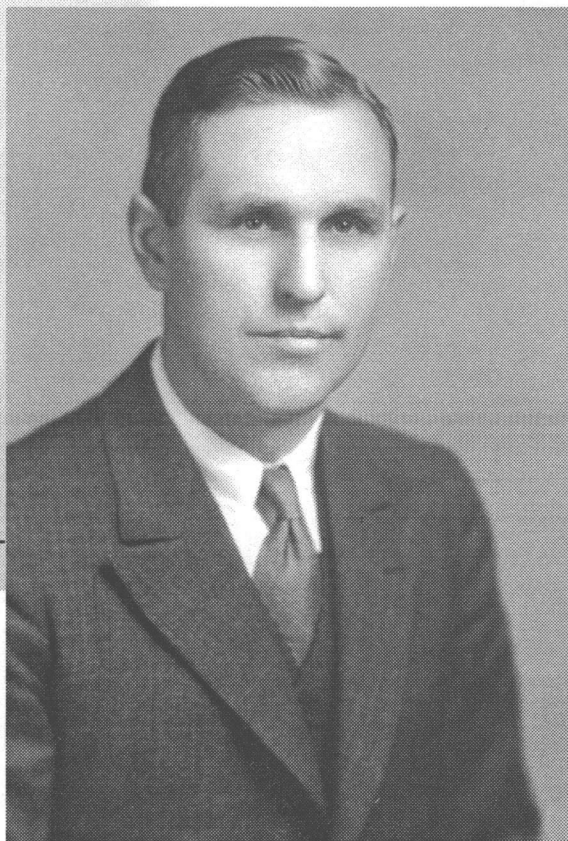
**Treasurer**

Ira Allison

**New Members**

Ernest Milton Dickinson  
Professor of Veterinary Medicine

Elmo Nall Stevenson  
Professor of Science Education





**1945-46**

**President**

Earl Price

**Vice President**

Milt Nelson

**Secretary**

Frank McWhorter, Dan Poling

**Treasurer**

Paul Walgren

**New Members**

Walter Fraser  
Professor of Forestry

Dwight Curtis Mumford  
Professor of Farm Management

Robert Ray Reichart  
Associate Professor of English

Ernest William Warrington  
Professor of Philosophy and Religion

**1943-44**

**President**

G. B. Cox

**Vice President**

Ira Allison

**Secretary**

Elmo Stevenson

**Treasurer**

Glenn Bakkum

**New Members**

Harold Cockerline  
Associate Professor of Electrical Engineering

Delmer Morrison Goode  
Editor of Publications

Donald David Hill  
Professor of Farm Crops

Paul A. Walgren  
Acting Business Manager

**1944-45**

**President**

Charlie Mockmore

**Vice President**

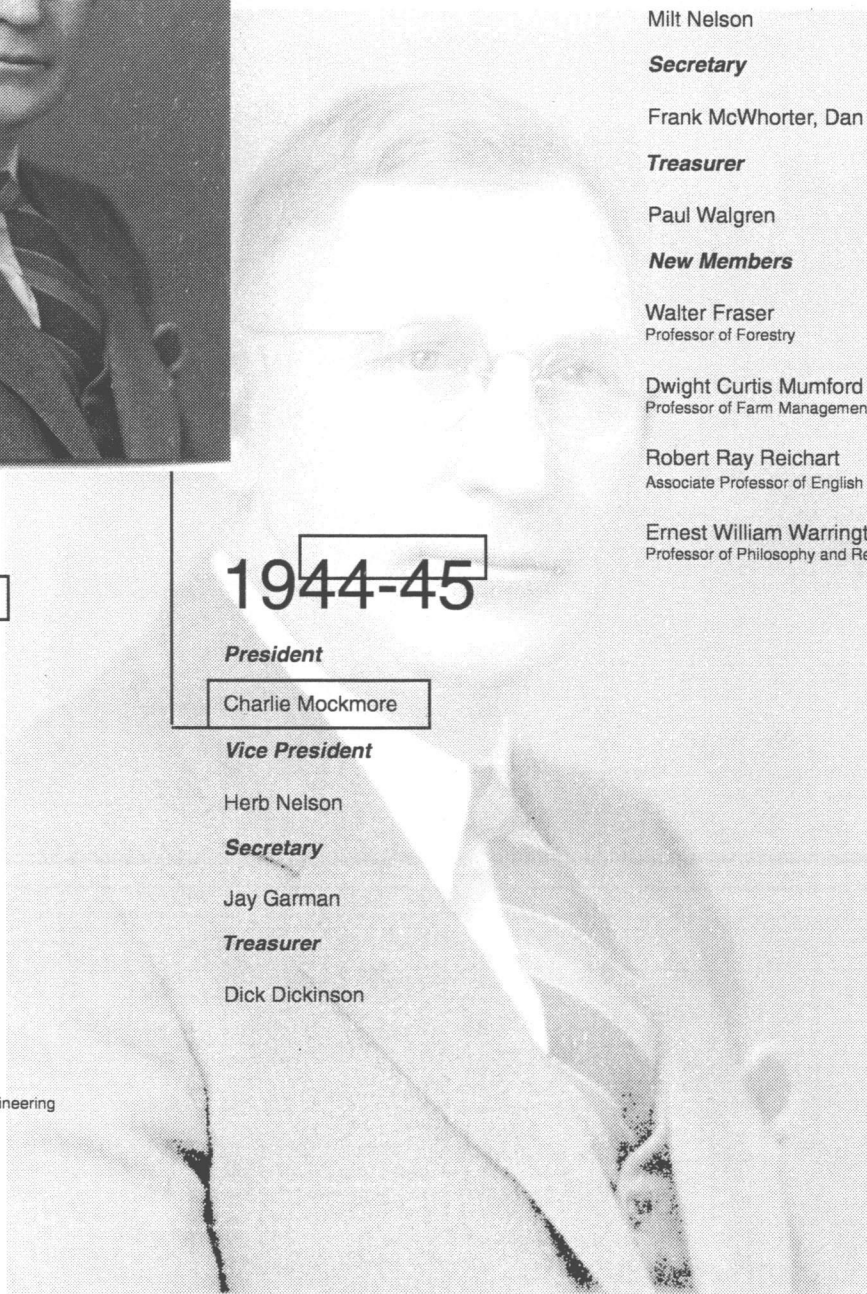
Herb Nelson

**Secretary**

Jay Garman

**Treasurer**

Dick Dickinson





# 1946-47

## President

George Williams

## Vice President

Andy Anderson

## Secretary

Delmer Goode

## Treasurer

Herb Nelson

# 1947-48

## President

Mitch Mitchell

## Vice President

Art Albert

## Secretary

Joe Butts

## Treasurer

Herb Sinnard

## New Members

Herbert Ellsworth Childs  
Professor of English

Charles Lester Clark  
Associate Professor of Mathematics

William Frederick Engesser  
Associate Professor of Industrial Engineering

John Max Swarthout  
Associate Professor of Political Science

# 1948-49

## President

Ira Allison

## Vice President

I. R. Jones

## Secretary

Glenn Bakum

## Treasurer

Harold Cockerline

## New Members

Joseph Alfred Cox  
Assistant Professor of Physical Education

John Richard Dilworth  
Assistant Professor of Forest Management

Robert Wesley Henderson  
Assistant to the Director, Agricultural  
Experiment Station

Robert Boen Walls  
Professor of Music



FIFTIETH ANNIVERSARY PORTRAIT (front row) Peckham, Goode, Kirk, Munford, Freund, Rodgers, Scullen, Popovich; (second row) Smith, McClintock, Cameron, Walls, Lusetti, Allison, Garman, Bernier, Bond; (third row) Gamble, Frolander, Peterson, Williamson, Leeland, H. Nelson, Christensen, Slabaugh, Sheely; (fourth row) Stone, Yunker, Highsmith, Sinnard, Strickler, Feikert, Oldfield, Becker, Layton, Roberts; (back row) Eiseman, Dorn, Gibbs, Foreman, Roth, Graham, Oles, Mumford, Crooks, Phillips, Scott, Enlows, Henderson, Dailey.

# 1949-50

## *President*

Herb Sinnard

## *Vice President*

Don Hill

## *Secretary*

Mac McCulloch

## *Treasurer*

Curt Mumford

## *New Members*

Duis Donald Bolinger  
Assistant Professor of Physics

Bert Einar Christensen  
Professor of Chemistry

Herman Carl Forslund  
Associate Professor of Pharmaceutical  
Chemistry

Earl Goddard  
Assistant Professor of Business Administration

James Kenneth Munford  
Associate Professor of English

Thomas Blaney Niven  
Assistant Professor of Food Technology

Milosh Popovich  
Associate Professor of Mechanical Engineering

Jefferson Belton Rodgers  
Professor of Agricultural Engineering

Anson H. Smith  
Assistant Manager, Co-op Bookstore

Paul Henry Weswig  
Associate Biochemist

# 1950-51

## *President*

Milt Nelson

## *Vice President*

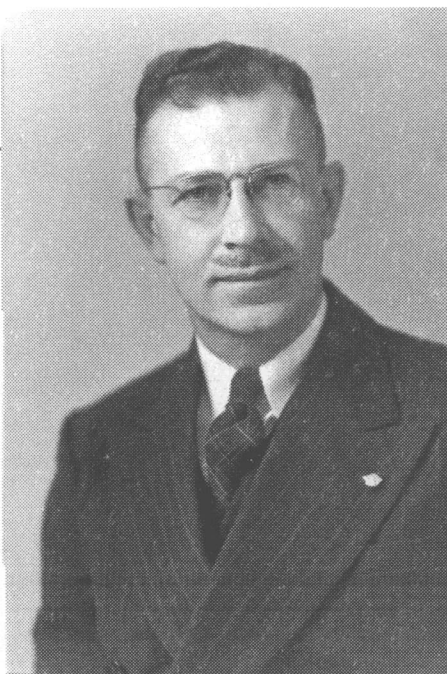
Jay Garman

## *Secretary*

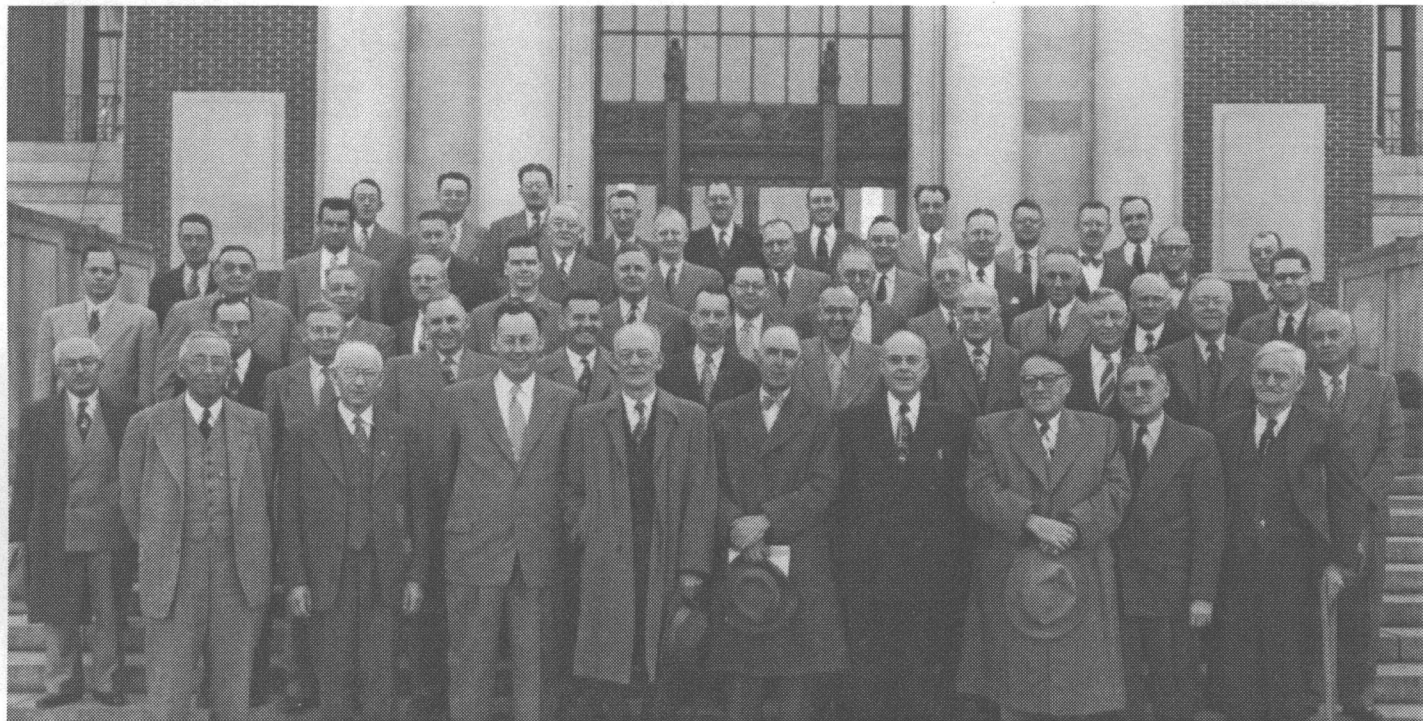
Herb Childs

## *Treasurer*

George Martin







**ON THE ANNIVERSARY of the Club in 1952, founders and early members joined the active members: (front row) Patterson, Lawrence, Starker, M. Nelson, Bouquet, Othus, Hewitt, Wells, Anderson; (second row) Ellison, Thomas, Cockerline, Reichart, Engesser, Yunker, McCulloch, Graf, Mockmore, Gilbert, Wilkinson; (third row) Walls, Mitchell, Williams, Powers, Goddard, Allison, Popovich, Laslett, G. Cox, Albert, Goode, Dickinson; (fourth row) Garman, Clark, Christensen, I. R. Jones, Martin, Butts, Smith, A. Cox, Sinnard, Weswig, Rodgers; (back row) Poling, Henderson, Mumford, Feikert, H. Nelson, Niven, Bolinger, Childs, Munford.**

## 1951-52

### **President**

Jay Garman

### **Vice President**

Delmer Goode

### **Secretary**

Poppy Popovich

### **Treasurer**

Charlie Clark

### **New Members**

Lewis Franklin Roth  
Associate Professor of Botany

Milton Conwell Sheely  
Professor of Industrial Engineering and  
Industrial Arts

## 1952-53

### **President**

Herb Nelson

### **Vice President**

Ed Yunker

### **Secretary**

Paul Weswig

### **Treasurer**

Al Cox

### **New Members**

Lawrence David Coolidge  
Associate Professor of Business Administration

Clarence Warren Hovland  
Associate Professor of Philosophy and Religion

Albert William Marsh  
Associate Professor of Soils

Richard LeVoyle Richardson  
Associate Professor of General Engineering

DeLoss Palmer Young  
Professor of Speech

# 1953-54

## **President**

Art Albert

## **Vice President**

Mac McCulloch

## **Secretary**

Bob Henderson

## **Treasurer**

Tom Niven, Pete Smith

## **New Members**

Martin Portman Coopey  
Professor of Civil Engineering

Kline Ruthven Swygard  
Professor of Political Science

# 1954-55

## **President**

Mac McCulloch

## **Vice President**

Bob Reichart

## **Secretary**

Jeff Rodgers

## **Treasurer**

Duis Bolinger

## **New Members**

Paul Emile Bernier  
Associate Professor of Poultry Husbandry

Donald Joseph Martel  
Associate Professor of Landscape Architecture

Harold Lester Schudel  
Assistant Professor of Farm Crops

William Irwin West  
Professor of Forest Products

# 1955-56

## **President**

Bert Christensen

## **Vice President**

Bob Reichert

## **Secretary**

Palmer Young, Herm Forslund

## **Treasurer**

Milt Sheely

## **New Members**

Richard Alton Adams  
General Superintendent of Physical Plant

Richard Morgan Highsmith  
Professor of Natural Resources

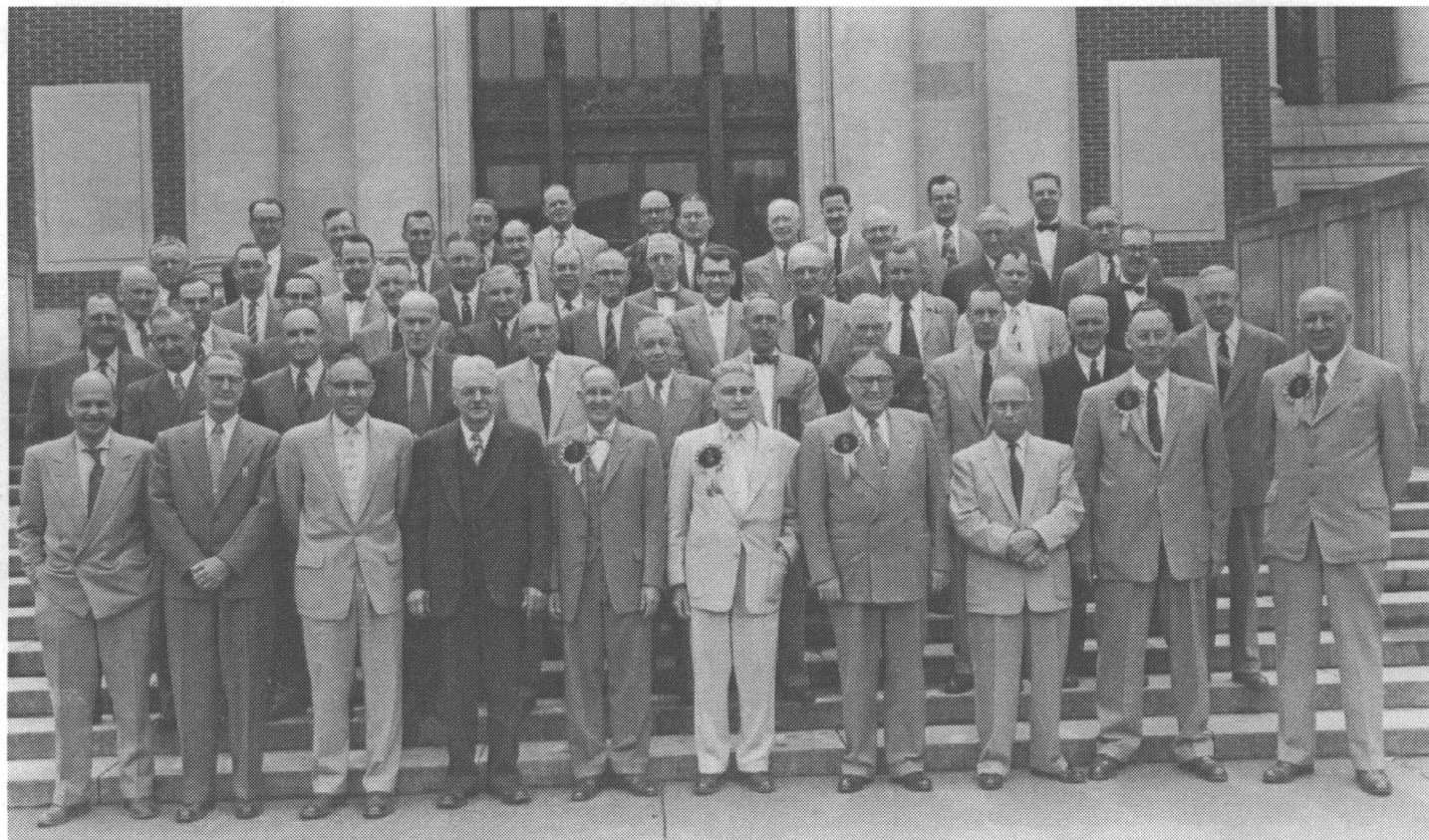
Paul Osborn Ritcher  
Professor of Entomology

Robert Macleod Storm  
Associate Professor of Zoology

Jesse Seburn Walton  
Professor of Chemical Engineering



Chaplain Delmer Goode and Herm Scullen, a member since 1928, in their accustomed places next to the head table.



THE 30th ANNIVERSARY PORTRAIT OF TRIAD, with founders wearing medallions. (front row) Young, Hill, Smith, Peterson, Barss, Wells, Hewitt, Scullen, Starker, Wiegand; (second row) H. Nelson, Bakkum, Munford, Graf, Butts, Williams, Sheely, Adams, Yunker, Allen (guest), Gilbert; (third row) Goode, Thomas, Popovich, Feikert, Reichart, McCulloch, Highsmith, M. Nelson, Walton, Walls, Sinnard; (fourth row) Forslund, Ritcher, Dilworth, A. Cox, Rodgers, G. Cox, Milne, Martin, Albert, Christensen; (back row) Henderson, Roth, Martel, Garman, Cuthbert, Swarthout, Weswig, Mumford, Hovland, Bernier, Dickinson.

## 1956-57

### **President**

Grant Feikert

### **Vice President**

Poppy Popovich

### **Secretary**

Larry Coolidge

### **Treasurer**

Lewis Roth

### **New Members**

Vernon Hendrum Cheldelin  
Professor of Chemistry

Walter Cyril Foreman  
Associate Professor of English

Jerome Ching Ren Li  
Professor of Mathematics

## 1957-58

### **President**

Bob Reichart

### **Vice President**

Bob Henderson

### **Secretary**

Dick Adams

### **Treasurer**

Paul Richter

### **New Members**

Samuel Hall Bailey  
Associate Professor of Journalism

James Edmund Oldfield  
Associate Professor of Animal Husbandry

Thomas Edward Roberts  
Assistant Professor of Music

Allen Brewster Scott  
Professor of Chemistry

## 1958-59

### **President**

Bob Henderson

### **Vice President**

Herman Forslund

### **Secretary**

Don Martel

### **Treasurer**

Bill West

### **New Members**

Carl Leonard Anderson  
Hygiene and Environmental Sanitation

Wayne Vincent Burt  
Oceanography

Charles Oswald Heath  
Engineering Materials

Philip B. Kalar  
KOAC Radio



# 1959-60

## **President**

Herman Forslund

## **Vice President**

Paul Weswig

## **Secretary**

Walt Foreman

## **Treasurer**

Jim Oldfield

## **New Members**

Wendell Hartmen Slabaugh  
Chemistry

Lester Braden Strickler  
Business

# 1960-61

## **President**

Paul Weswig

## **Vice President**

Kline Swygard

## **Secretary**

Dick Dilworth

## **Treasurer**

Jeff Rogers

## **New Members**

James Willard Groshong  
English

Donald R. Hunt  
Reference Librarian

James George Knudsen  
Chemical Engineering



June 1963 - Triad picnic



# 1961-62

## *President*

Jeff Rogers

## *Vice President*

Paul Bernier

## *Secretary*

Sam Bailey

## *Treasurer*

Phil Kalar

## *New Members*

John Ritchie Cowan  
Farm Crops

Charles Edward Wicks  
Chemical Engineering

# 1962-63

## *President*

I. R. Jones

## *Vice President*

Pete Smith

## *Secretary*

Dick Highsmith

## *Treasurer*

Don Wilkinson

## *New Members*

Charles Bostwick Friday  
Economics

Arvid Turner Lonseth  
Mathematics

Harold William Moe  
Physical Education

# 1963-64

## *President*

Pete Smith

## *Vice President*

Milton Sheely

## *Secretary*

Charles Wicks

## *Treasurer*

Sam Bailey

## *New Members*

Charles Henry Dailey, Jr  
Physical Education

Edison Ellsworth Easton  
Business

Robert Eugene Gaskell  
Mathematics

Wallace Eugene Gibbs  
Registrar

Chih Hsing Wang  
Chemistry



TRIADS IN JANUARY 1963 (front row) Scullen, Adams, Albert, I. R. Jones, Highsmith, Dilworth, Sheely, Wells; (second row) Popovich, West, McCulloch, Crooks, Martin, Milne, Rodgers, Graf, Goode; (third row) Walton, H. Nelson, Groshong, Bernier, M. Nelson, Scott, Christensen; (fourth row) Martel, Hovland, Storm, Swygard, Reichart, Weswig, Foreman, Young; (back row) Hunt, A. Cox, Kalar, Feikert, Baakum, Henderson, Mumford, Smith, Heath, Allison, Yunker, Munford.



# 1964-65

## **President**

George Martin

## **Vice President**

Don Wilkinson

## **Secretary**

Al Cox

## **Treasurer**

Les Strickler

# 1965-66

## **President**

Don Wilkinson

## **Vice President**

Don Martel

## **Secretary**

Bill West

## **Treasurer**

Ed Easton

## **New Members**

Spencer Butler Apple, Jr.  
Horticulture

William Ramsden Crooks  
Psychology

Murray Drayton Dawson  
Soils

Stanley Ellsworth Williamson  
Science Education



Wives helped the Club celebrate its 40th Anniversary in the administration of Al Scott in 1966.

1967-68

**President**

Bob Walls

**Vice President**

Tom Roberts

**Secretary**

Charles Dailey

**Treasurer**

Arvid Lonseth

**New Members**

John Vincent Byrne  
Oceanography

Donald Glen Humphrey  
Biology

Robert Lee Phillips  
Speech

Ernest Nelson Sandgren  
Art

Thomas George Scott  
Wildlife Ecology

Solon Allen Stone  
Electrical Engineering

Robert Joseph Zaworski  
Mechanical Engineering

1968-69

**President**

Milt Sheely

**Vice President**

Bill Crooks

**Secretary**

Spence Apple

**Treasurer**

Phil O'Neill

**New Members**

Robert Richard Becker  
Biochemistry

H. Ronald Cameron  
Plant Pathology

Virgil Haven Freed  
Agricultural Chemistry

Harold Maurice Livingston  
Speech

Cal Graham Monroe  
State Extension Agent, 4-H and Youth Development

Keith Floyd Oles  
Geology

James Richard Welty  
Mechanical Engineering

1966-67

**President**

Al Scott

**Vice President**

Bud Gibbs

**Secretary**

Jim Knudsen

**Treasurer**

Don Hunt

**New Members**

Stuart Edward Knapp  
Veterinary Parasitology

Thomas C. McClintock  
History

John Philip O'Neill  
Family Life

Leo W. Parks  
Microbial Physiology

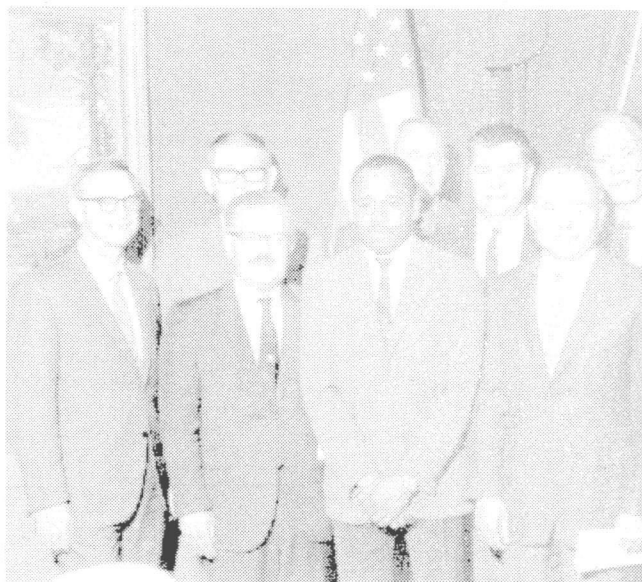
Charles Wesley Peckham  
Director of Printing

Roger Gene Peterson  
Statistics



June 1969 - Triad picnic





## 1969-70

### **President**

Bill Crooks

### **Vice President**

Wendell Slabaugh

### **Secretary**

Chuck Peckham

### **Treasurer**

Phil O'Neill

### **New Members**

Carl Eldon Bond  
Fisheries

Harry Tyson Easterday  
Physics

Herbert Farley Frolander  
Oceanography

Wilbert Gamble  
Biochemistry

Lafayette George Harter, Jr  
Economics

Dale Earl Kirk  
Agricultural Engineering

Albert Lewis Leeland  
Elementary Education

William Payne Nagel  
Forest Entomology

George Earl Thornburgh  
Mechanical Engineering

Carl Bernard Wagner  
Varsity Track Coach

New Members 1969/70 (from left) Cal Monroe, Virgil Freed, Hal Livingston, Will Gamble. Al Leeland, Lafe Harter, Dale Kirk, Keith Oles, Ron Cameron.

## 1970-71

### **President**

Bill Engesser

### **Vice President**

Hal Moe

### **Secretary**

Solon Stone

### **Treasurer**

Phil O'Neill

### **New Members**

Crawford Henderson Graham  
Alumni Relations

Richard Eugene Pahre  
Financial Aid



# 1971-72

## President

Dick Dilworth

## Vice President

Keith Oles

## Secretary

Dale Kirk

## Treasurer

John Byrne

## New Members

Anthony De Gray Birch  
Budget Officer

John Rowland Davis  
Agricultural Engineering

Andrew S. Landforce  
Wildlife Management Specialist

Jack Louis Rettig  
Business Administration

Clifford Wayne Trow  
History

# 1972-73

## President

Paul Weswig

## Vice President

Murray Dawson

## Secretary

Roger Petersen

## Treasurer

John Byrne

## New Members

Thurston Ermon Doler  
Speech Communication

Harold Clarence Dorn  
Journalism

Harold Eugene Enlows  
Geology

Roger Kenneth Fendall  
Agronomy

Fred Wayne Fox  
Science Education

Forrest James Gathercoal  
Careers, Planning, and Placement

# 1973-74

## President

Jim Oldfield

## Vice President

Walt Foreman

## Secretary

Rob Phillips

## Treasurer

Dick Pahre

## New Members

James Edward Anderson  
Basketball Coach

Jesse Franklin Bone  
Veterinary Medicine

David Eiseman  
Music

William Kreiter Ferrell  
Forest Management

Harry Freund  
Chemistry

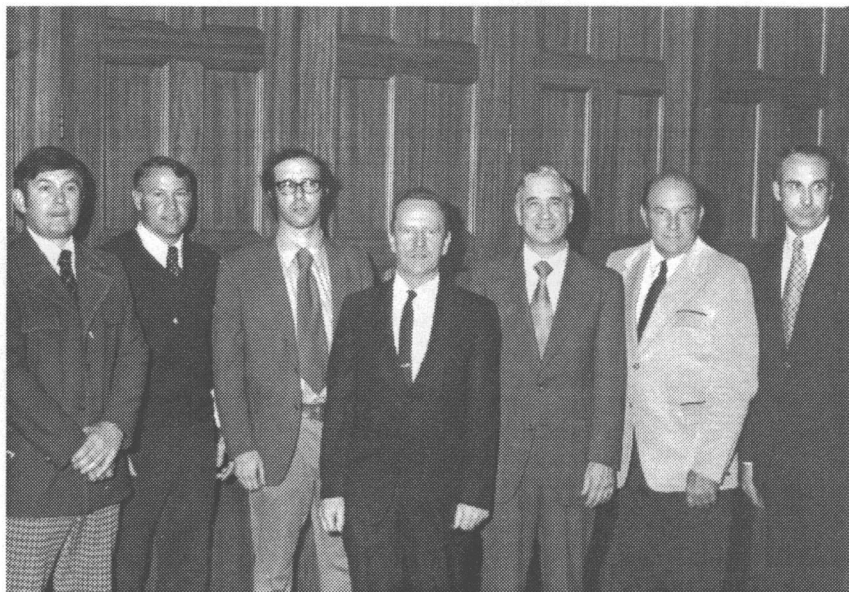
Hugh Frank Jeffrey, Jr.  
Business Affairs

Walter I. Lusetti  
Spanish

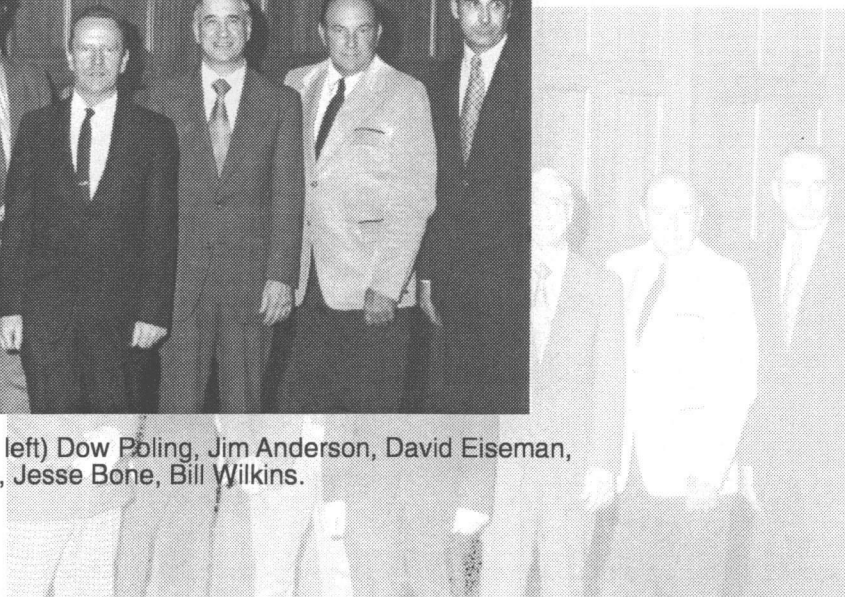
Dow Peter Poling  
Physical Education

Billy Hughel Wilkins  
Economics

Thomas Leyba Yates  
Administrative Systems Development



New Members 1974 (from left) Dow Poling, Jim Anderson, David Eiseman, Harry Freund, Walt Lusetti, Jesse Bone, Bill Wilkins.



1974-75

**President**

Stan Williamson

**Vice President**

J. Ritchie Cowan

**Secretary**

Ken Munford

**Treasurer**

Dick Pahre

**New Members**

William James Brennan  
Assistant Dean of Students

Thomas Clark Hogg  
Anthropology

Paul E. Kifer  
Food Science and Technology

Robert Davis Layton  
Civil Engineering

Austin Frederic Walter  
Political Science

1975-76

**President**

Paul Bernier

**Vice President**

Edison Easton

**Secretary**

Jim Welty

**Treasurer**

Bob Becker

**New Members**

Frederick Lee Hisaw, Jr.  
Zoology

John Ronald Miner  
Agricultural Engineering

Kenneth Denton Patterson  
Economics

Alfred Nathan Roberts  
Horticulture

Paul Bartholomew Valenti  
Assistant Athletic Director

OSU  
CORVALLIS, OREGON 97331

OREGON STATE UNIVERSITY  
DEPARTMENT OF ECONOMICS  
Feb. 7, 1977

Dear Ron:

Here are my suggestions for  
Triad membership:

Prof. David H. Carlson, Mathematics;

Prof. Robert J. Frank, English;

Prof. Lois A. McGill, Food Science.

All three would be excellent members of  
our organization.

Sincerely yours,

Bill Williams

Prof. Ron Cameron  
Plant Pathology  
Campus

# 1976-77

## **President**

Herb Frolander

## **Vice President**

Harold Livingston

## **Secretary**

Fred Fox

## **Treasurer**

Bob Becker

## **New Members**

Robert J. Frank  
English

Daniel Panshin  
Oceanography

John H. Rock  
Art

Leonard J. Weber  
Electrical Engineering



May 1976 - 5 New Members - Miner, Hisan, Patterson, Roberts with Dan Poling

# 1977-78

## **President**

Harold Dorn

## **Vice President**

Bill Wilkins

## **Secretary**

Spike Gathercoal

## **Treasurer**

Bob Becker

## **New Members**

Larry Boersma  
Soils

James M. Douglass  
Music

Lois A. McGill  
Food Science and Technology

Gary H. Tiedeman  
Sociology



# 1978-79

## **President**

Edison Easton

## **Vice President**

Wendell Slabaugh

## **Secretary**

Ron Cameron

## **Treasurer**

Charles Wicks

## **New Members**

Kenton L. Chambers  
Botany & Plant Pathology

A. Morrie Craig  
Veterinary Medicine

R. P. "Midge" Cramer  
Physical Education

John A. Crawford  
Fisheries and Wildlife

R. Gary Hicks  
Civil Engineering

C. J. "Bud" Weiser  
Horticulture



1980-81

**President**

Ron Cameron

**Vice President**

Roger Fendall

**Secretary**

Thurston Doler

**Treasurer**

George Thornburgh

**New Members**

William C. Jenne  
Sociology

T. Darrah Thomas  
Chemistry

1979-80

**President**

Wendell Slabaugh

**Vice President**

Ron Cameron

**Secretary**

Dale Kirk

**Treasurer**

Charles Wicks

**New Members**

Glenn A. Klein  
Extension Education

James H. Krueger  
Chemistry

Michael V. Oriard  
English

Jerome C. Weiler  
Business

Joe B. Zaerr  
Forest Science

**1981-82**

**President**

Spike Gathercoal

**Vice President**

Chuck Dailey

**Secretary**

Midge Cramer

**Treasurer**

George Thornburgh

**New Members**

George W. Brown  
Forest Engineering

Frank R. Cross  
Education

David Faulkenberry  
Statistics

D. S. "Pete" Fullerton  
Pharmacy

Richard S. Johnston  
Agriculture and Resource Economics

Bruce Lulow  
OSU Bookstore

W. Bruce Shepard  
Political Science

John R. Stewart  
Horticulture



**1982-83**

**President**

Wil Gamble

**Vice President**

Bob Frank

**Secretary**

Solon Stone

**Treasurer**

Charles Peckham

**New Members**

Norman H. Anderson  
Entomology

John C. Buckhouse  
Rangeland Resources

Thomas P. Evans  
Science Education

S. E. "Sally" Malueg  
Foreign Languages

Thomas J. Maresch  
Geography

Richard A. Scanlan  
Food Science and Technology

H. A. "Hod" Wells  
Physical Plant

James B. Wilson  
Forest Products

# 1983-84

## **President**

Warren Hovland

## **Vice President**

Darrah Thomas

## **Secretary**

Jack Davis

## **Treasurer**

Charles Peckham

## **New Members**

A. Eugene Abrassart

Business

Perry J. Brown

Resource Recreation Management

Zoe Ann Holmes

Foods and Nutrition

Mary W. Kelsey

Foods and Nutrition

Nancy N. Powell

Library

Dale D. Simmons

Psychology

Mark R. Sponenburgh

Art

Sam Stern

Industrial Education

# 1984-85

## **President**

Paul Kifer

## **Vice President**

Gary Tiedeman

## **Secretary**

Bob Frank

## **Treasurer**

Charles Peckham

## **New Members**

Lloyd E. Crisp

Speech

John M. Dunn

Physical Education

Lisa S. Ede

English

JoAnn C. Leong

Microbiology

Michael V. Martin

Agriculture and Resource Economics

Lucy S. Skjelstad

Horner Museum

R. Charles Vars, Jr

Economics

Ted S. Vinson

Civil Engineering

# 1985-86

## **President**

Gary Tiedeman

## **Vice President**

Sally Malueg

## **Secretary**

Bob Frank

## **Treasurer**

Glenn Klein

## **New Members**

Arnold P. Appleby

Crop Science

D. Kay Conrad

Admissions

David P. Hardesty

Art

Charlotte J. Headrick

Speech Communications

Kathleen F. Heath

Health and Physical Education

Robert D. Kiekel

Foreign Languages

Robert O. McMahon

Forest Products

Robert V. Mrazek

Chemical Engineering

Logan A. Norris

Forest Science

Thomas F. Savage

Poultry Science







**1986-87**

**President**

Thurston Doler

**Vice President**

Mary Kelsey

**Secretary**

Dick Scanlan

**Treasurer**

Glenn Klein

**New Members**

Matt M. Amano  
Business

Linda L. Blythe  
Veterinary Medicine

Richard L. Clinton  
Political Science

Daniel B. Dunham  
Education

Martin L. Hellickson  
Agricultural Engineering

David S. Kragthorpe  
Football Coach

Stephen J. Lawton  
Business

Jon R. Root  
Communication Media Center

Susan G. Stafford  
Forest Science

**1987-88**

**President**

Mary Kelsey

**Vice President**

Solon Stone

**Secretary**

Dick Scanlan

**Treasurer**

Glenn Klein

**New Members**

Marcus J. Borg  
Religious Studies

George H. Constantine  
Pharmacy

Sally K. Francis  
Apparel, Interiors and Merchandising

Henry M. Sayre  
Art

**1988-89**

**President**

Tom McClintock

**Vice President**

Darrah Thomas

**Secretary**

Arnold Appleby

**Treasurer**

Zoe Ann Holmes

**New Members**

John W. Irving  
OSU Foundation

John W. Lee  
Mathematics

Mina R. McDaniel  
Food Science and Technology

Kathleen D. Moore  
Philosophy

Mary L. Powelson  
Botany and Plant Pathology

Clara C. Pratt  
Human Development and Family Studies

Richard Towey  
Economics



Irma Delson and John Byrne

# 1989-90

## **President**

Darrah Thomas

## **Vice President**

Robert Becker

## **Secretary**

Arnold Appleby

## **Treasurer**

Kay Conrad

## **New Members**

Jack C. Bailes  
Business

George S. Bailey  
Food Sciences & Technology

D. Mike Burgett  
Entomology

Jon "Joe" Hendricks  
Sociology

Kenneth S. Krane  
Physics

Jane Lubchenco  
Zoology

Terry L. Miller  
Agricultural Chemistry

Nancy Rosenberger  
Anthropology

# 1990-91

## **President**

Chuck Peckham

## **Vice President**

Sally Malueg

## **Secretary**

Arnold Appleby

## **Treasurer**

Larry Boersma

## **New Members**

Helen M. Berg  
Statistics

Stella M. Coakley  
Botany & Plant Pathology

Dianne W. Hart  
Foreign Languages

Ronald P. Lovell  
Journalism/CLA Dean's Office

Rachelle McCabe  
Music

Debra Rose  
Exercise & Sport Science

Annette M. Rossignol  
Public Health



# 1991-92

## **President**

Sally Malueg

## **Vice President**

JoAnn Leong

## **Secretary**

David Hardesty

## **Treasurer**

Larry Boersma

## **New Members**

Boris W. Becker  
Business

Paul Farber  
History

James A. Folts  
Journalism/Art

Clara Horne  
Business

# 1992-93

## **President**

JoAnn Leong

## **Vice President**

Ron Miner

## **Secretary**

David Hardesty

## **Treasurer**

Larry Boersma

## **New Members**

Jane A. Ackerman  
Student Health Services

Brian Dodd  
Nuclear Engineering

Cheryl Glenn  
English

Thomas E. McLain  
Forest Products

Miriam Orzech  
Academic Affairs

Mary Alice Seville  
Business Administration

# 1993-94

## **President**

Ron Miner

## **Vice President**

Sally Francis

## **Secretary**

David Hardesty

## **Treasurer**

Norm Anderson

## **New Members**

Barbara S. Balz  
Registrar

Stephen E. Binney  
Nuclear Engineering

Elizabeth L. Brose  
OSU Foundation

Leslie Davis Burns  
Apparel, Interiors, Housing & Merchandising

Dianne K. Erickson  
Science & Math Education

John L. Fryer  
Microbiology

Kinsey B. Green  
Dean, Home Economics

Phyllis Lee  
Multicultural Affairs

William W. Warren  
Physics







Bob Henderson captures another Triad moment

## 1994-95

### **President**

Sally Francis

### **Vice President**

Morrie Craig

### **Secretary**

David Hardesty

### **Treasurer**

Norm Anderson

### **New Members**

Lynda J. King  
Foreign Languages

Jose N. Reyes  
Nuclear Engineering

## 1995-96

### **President**

Morrie Craig

### **Vice President**

Kay Conrad

### **Secretary**

David Hardesty

### **Treasurer**

Tom Savage

### **New Members**

Colin B. Brown  
Civil Engineering

Richard Fast  
Air Force Studies

Neil E. Forsberg  
Animal Science

Kenneth B. Johnson  
Botany & Plant Pathology

Dawn M. Peters  
Statistics

Marvin R. Rice  
Naval Science

Ober Tyus  
Linus Pauling Institute

Rebecca Warner  
Sociology

1996-97

**President**

Kay C. Robinson

**Vice President**

Sam Stern

**Secretary**

David Hardesty

**Treasurer**

Tom Savage

**New Members**

Karyle Butcher  
Library

Irma S. Delson  
Oceanic and Atmospheric Sciences

John Drexler, Jr.  
Business

Leonard H. Friedman  
Public Health

Cheryl L. Jordan  
Apparel, Interiors, Housing & Merchandising

Phillippe A. Rossignol  
Entomology

Robert E. Witters  
Crop and Soil Science

Andy Duncan  
Extension & Experiment Station

Amy Gush  
Health & Human Performance



1997-98

**President**

Sam Stern

**Vice President**

Jose Reyes

**Secretary**

Becky Warner

**Treasurer**

Norm Anderson

**New Members**

Gary L. Beach  
Institutional Research

Sue Bowman  
Extension Service

Vicki Collins  
English

Betty Duvall  
Education

Erik Fritzell  
Fish and Wildlife

Isaiah Jones  
United Campus Ministry

Sunil Khanna  
Anthropology

Andrew C. Klein  
Nuclear Engineering

Ilene Kleinsorge  
Business

Murray Levine  
Oceanic and Atmospheric Sciences

Hiram W. Li  
Fish and Wildlife

Judith Li  
Fish and Wildlife

Susan Longerbeam  
Student Health Services

James McAlexander  
Business

Sylvia Moore  
Conferences & Special Events

Joseph W. Nibler  
Chemistry

Paul A. Primak  
International Exchanges

Mary S. Prucha  
Graduate School

Roy C. Rathja  
Engineering

Rebecca Sanderson  
Counseling & Psychological Services

Jill R. Schuster  
University Marketing

Christine Sproul  
International Education

# 1998-99

## **President**

Linda Blythe

## **Vice President**

Irma Delson

## **Secretary**

Phyllis Lee

## **Treasurer**

Norm Anderson

## **New Members**

Maya Abels  
Science

Charles Boyer  
Horticulture

Robert M. Burton, Jr.  
Mathematics

James R. Coakley  
Business

Douglas A. Derryberry  
Psychology

Jerry R. Heidel  
Veterinary Medicine

B. Starr McMullen  
Economics

Janice Kay McMurray  
Agricultural Sciences

Janet Nishihara  
Educational Opportunities Program

Kurt M. Peters  
Ethnic Studies

Marjorie A. Reed  
Psychology

Gordon M. Reistad  
Mechanical Engineering

Alan H. Robinson  
Nuclear Engineering

Robby O. Robson  
Mathematics/Academic Affairs

Kay Schaffer  
College of Liberal Arts

Lee R. Strandberg  
Pharmacy

Barney T. Watson  
Food Science and Technology



# 99-2000

## **President**

Irma Delson

## **Vice President**

Leonard Friedman

## **Secretary**

Phyllis Lee

## **Treasurer**

Robby Robson

David A. Anderson  
Air Force Studies

Roy G. Arnold  
Agricultural Sciences

Erlinda Gonzales-Berry  
Ethnic Studies

Alice Mills Morrow  
Extension - Family Economics

Tom Munnerlyn  
Career Services

Thomas K. Plant  
Electrical and Computer Engineering

Beth Rietveldt  
Memorial Union

Juan Antonio Trujillo  
Foreign Languages

# 2000-01

## **President**

Leonard Friedman

## **Vice President**

Starr McMullen

## **Secretary**

Phyllis Lee

## **Treasurer**

Charles Boyer

## **New Members**

Jackie Balzer  
Undergraduate Academic Program

Andrew Brower  
Entomology

George Copa  
School of Education

Frank Flaherty  
Mathematics

Jim Haggart  
Naval Science

Darlene Judd  
Entomology

Micheal Quinn  
Computer Science

Steve Tesch  
Forest Engineering





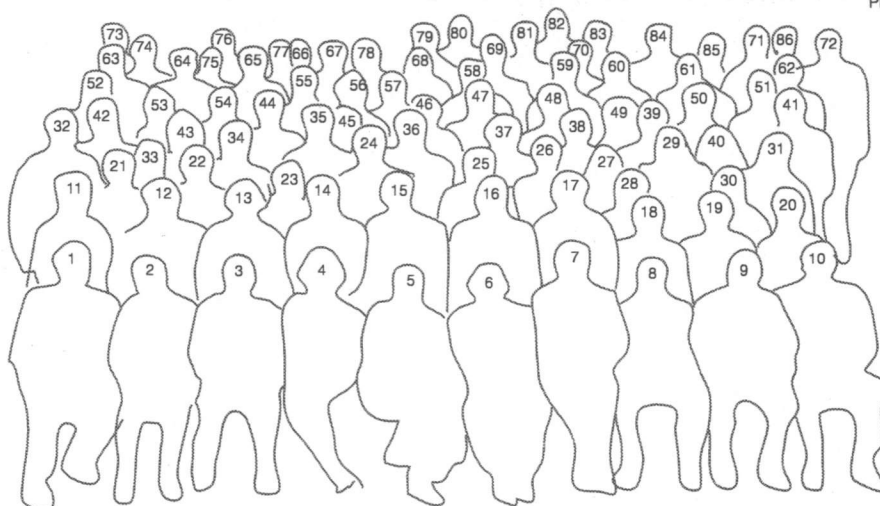
TRIAD class of 2001:

(left to right) Jim Haggart, George Copa, Mike Quinn,  
Steve Tesch, Jackie Balzer, Andy Brower.

## Triad Membership 2000-2001



Photograph by Elizabeth Miller



**1st (front) row:** 1. James A. Folts; 2. Robert Wesley Henderson; 3. Murray Drayton Dawson; 4. B. Starr McMullen; 5. Lafayette G. "Lafe" Harter, Jr.; 6. Alice Mills Morrow; (with "Tierney," guide dog in training); 7. John W. Irving; 8. J. Kenneth Munford; 9. Charles Henry Dailey, Jr.; 10. Crawford Henderson "Scram" Graham.

**2nd row:** 11. Lynda J. King; 12. S. E. "Sally" Malueg; 13. Kathleen F. Heath; 14. Martin L. Hellickson; 15. Dale Earl Kirk; 16. Matthew M. Amano; 17. Dianne K. Erickson; 18. Betty Duvall; 19. Maya Abels; 20. Irma Delson.

**3rd row:** 21. Pete Smith; 22. Arnold P. Appleby; 23. Jill Schuster; 24. Thurston Ermon Doier; 25. Zoe Ann Holmes; 26. Boris W. Becker; 27. Clara Horne; 28. Phyllis Lee; 29. Rebecca Sanderson; 30. Judy Li; 31. Hiram Li.

**4th row:** 32. Alan H. Robinson; 33. D. Kay Conrad Robinson; 34. Thomas C. McClintock; 35. Richard L. Clinton; 36. Gordon M. Reistad; 37. Dianne W. Hart; 38. Clarence Warren Hovland; 39. Leonard J. Weber; 40. Annette M. Rossignol; 41. Phillippe A. Rossignol.

**5th row:** 42. Gary L. Beach; 43. Vicki Tolar Burton; 44. William W. Warren; 45. Tom Munnerlyn; 46. George H. Constantine; 47. James George Knudsen; 48. Sam Stern; 49. Beth Rietveldt; 50. Mary W. Kelsey; 51. Mary Alice Seville.

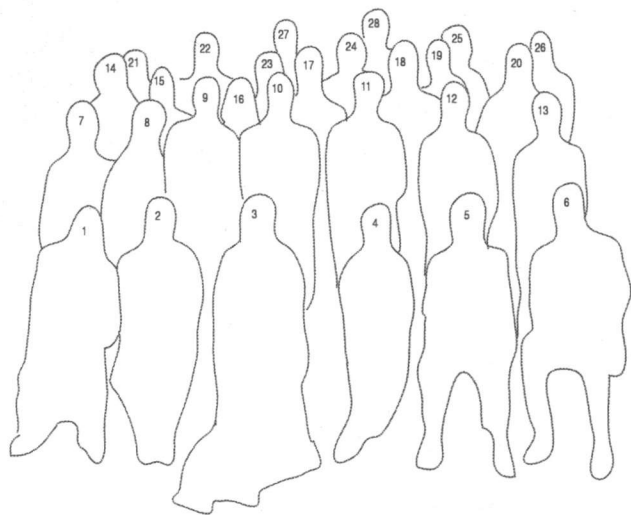
**6th row:** 52. Clifford Wayne Trow; 53. Kathleen D. Moore; 54. Roy C. Rathja; 55. Norman H. Anderson; 56. Lee R. Strandberg; 57. D. Mike Burgett; 58. Murray Levine; 59. Jim Oldfield; 60. Juan Antonio Trujillo; 61. Gary H. Tiedeman; 62. James H. Krueger.

**7th row:** 63. Roger Gene Peterson; 64. Donald R. Hunt; 65. Herbert Farley Frolander; 66. Kurt Peters; 67. Robert R. Becker; 68. Wilbert Gamble; 69. Wallace Eugene "Bud" Gibbs; 70. Andrew C. Klein; 71. Kenton L. Chambers; 72. Frederick Lee Hisaw, Jr.

**8th (top) row:** 73. Ober Tyus; 74. Ilene Kleinsorge; 75. David Anderson; 76. Billy Hughel "Bill" Wilkins; 77. John Drexler, Jr.; 78. Thomas F. Savage; 79. Neil E. Forsberg; 80. Henry Sayre; 81. Thomas K. Plant; 82. Rob Phillips; 83. Joseph W. Nibler; 84. Stephen E. Binney; 85. Paul Emile Bernier; 86. David Eiseman.



Photograph by Elizabeth Miller



**1st (front) row:** 1. JoAnn C. Leong; 2. Paul Farber; 3. Charlotte Headrick (with therapy dog "Bantry"); 4. Leslie Davis Burns; 5. Jon "Joe" Hendricks; 6. Logan A. Norris.

**2nd row:** 7. Kinsey B. Green; 8. Sylvia Moore; 9. Jack Louis Rettig; 10. Robert E. Witters; 11. Kenneth S. Krane; 12. Richard A. Scanlan; 13. Kay Schaffer.

**3rd row:** 14. Lucy S. Skjelstad; 15. Roy G. Arnold; 16. Stella M. Coakley; 17. C. J. "Bud" Weiser; 18. Leonard H. Friedman; 19. Sally K. Francis; 20. David P. Hardesty.

**4th row:** 21. Christine Sproul; 22. John C. Buckhouse; 23. Helen M. Berg; 24. Erik Fritzell; 25. Janice Kay McMurray; 26. Joe B. Zaerr.

**5th (top) row:** 27. Thomas E. McLain; 28. Richard S. Johnston.



## Golden Litany of Triad Club

Triad Club Half Century of Fellowship, Cooperation, Service

1926-76

By Delmer Goode, Chaplain

Triple the motto embossed on our shield,  
Range, height, and depth of our fair Triad field,  
In the long years of the Club's work and play,  
All of the lunch times and all of the way  
Down to our Triad hour sharing this day.  
We hail our Triad hour together.

Called out each week to make merry together,  
Light are our spirits whatever the weather,  
Utmost and sparkling the wit wells up,  
Brimming our hearts like a full flowing cup.  
We hail our Triad hour together.

Here noted scholars share with us their lore,  
Authors and travelers, professors and more,  
Life of the world, of the nation and state,  
Fullest of coverage and all up to date.  
We hail our Triad hour together.

Chicken's the tastiest food you'll be knowing,  
Excellent, tempting, it sets you to crowing.  
Now that a Poultry savant's in the chair,  
Thursday means chicken, as oft as he dare.  
Up to the loftiest perch of the tree,  
Raised to the Golden Year President he.  
Yes, we are fond of Paul, all will agree.  
We hail our Triad hour together.

Once every week we assemble to find  
Food for the body and food for the mind,  
We hail our Triad hour together.

Friendship grows quietly, slowly, and free,  
Even as acorn may grow to a tree.  
Linking of lives must spring up from the roots,  
Likings and interests and kindred pursuits,  
Or an experience shared with another  
Who is transformed from acquaintance to brother.  
Sometimes in Triad such ties come to being,  
Held by a bond of congenial agreeing.  
In the distractions life lays on our hearts  
Precious the fellowship Triad imparts.  
Bless thou our fellowship, O God.

Challenge may set a man standing at bay,  
One against many and saving the day,  
One missing martyrdom, honored in name,  
Proudly remembered and mounting to fame,  
Even more glorious when joining together,  
Ranged in a phalanx, men stoutly endeavor,  
Able to achieve what no one man could do,  
Triumph o'er obstacles, win for the true.  
In all the tactics for wise operation,  
Open and useful for man's exploitation,  
Nothing surpasses good cooperation.  
Bless thou our fellowship, O God

Stewardship claims for the gifts in our keeping  
Earning of revenue, bounty of reaping.  
Reason and knowledge, health, time, skill, and talents  
Viewed as high trusts must exhibit a balance.  
In joy of living we climb and we plod,  
Conscience keeps giving a nudge or a nod.  
Ever unfailing the mercy of God.  
Bless thou our fellowship, O God

We thank Thee, O God, for the Founders, Leaders, and Members who have advanced Triad Club through the years.

We ask Thy blessing on this hour.

Wilt Thou guard and guide Triad Club in future useful years. AMEN.

## Triad in the 21st Century

called to **T**o service and

coope**R**ation

**I**n fellowship

**A**round lunch

gathere**D** each week

**C**ommunity

of **L**isteners, broadening

our **U**nderstanding of

the **B**rotherhood and Sisterhood of Humankind

**T**houghtful presentations

**t**Hursday's

**R**espite--

**E**njoyable

**E**ntertainment

**Q**uality

ho**U**r

**A**round a theme

the **R**etelling of

**T**ales

**E**ducating

ou**R**

fellow**S**hip

w**O**rd of

**F**riendships

**A** amazing!

**C**an you believe it?

s**E**venty-five years of

edificatio**N**

enter**T**ainment

la**U**ghter and

tea**R**s--

**Y**es!

## Membership List - Alphabetical

Maya Abels (1999)	O.S.U. Foundation
A. Eugene Abrassart (1984)	Business
Jayne A. Ackerman (1993)	Student Health Services
Richard Alton Adams (1956)	Physical Plant
Arthur Lemuel Albert (1940)	Communication Engineering
Ira Shimmin Allison (1938)	Geology
Matt M. Amano (1987)	Business
Carl Leonard Anderson (1959)	
David A. Anderson (2000)	Air Force Studies
James Edward Anderson (1974)	Basketball Coach
Norman H. Anderson (1983)	Entomology
William B. Anderson (1929)	Physics
Spencer Butler Apple, Jr. (1966)	Horticulture
Arnold P. Appleby (1986)	Crop Science
Byron Arnold (1932)	Organ, Piano, Musical History, Theory
Roy G. Arnold (2000)	Agricultural Sciences
Jack C. Bailes (1990)	Business
George S. Bailey (1990)	
Samuel Hall Bailey (1958)	Food Science and Technology
Glenn Almer Bakkum (1940)	Journalism
Lee Cleveland Ball (1925)	Sociology
Barbara S. Balz (1994)	Accounting
Jacqueline L. Balzer (2001)	Registrar
Howard Phillips Barss (1925)	First Year Experience Program
Gary L. Beach (1998)	Botany & Plant Pathology
Boris W. Becker (1992)	Institutional Research
Robert Richard Becker (1969)	Business
Helen M. Berg (1991)	Biochemistry
Paul Emile Bernier (1955)	Statistics
Stephen E. Binney (1994)	Poultry Husbandry
Anthony De Gray Birch (1972)	Nuclear Engineering
Linda L. Blythe (1987)	Budget Officer
Ray Boals (1929)	Veterinary Medicine
	Mechanical Engineering



Larry Boersma (1978)	Soils
Duis Donald Bolinger (1950)	Physics
Carl Eldon Bond (1970)	Fisheries
Jesse Franklin Bone (1974)	Veterinary Medicine
Marcus J. Borg (1988)	Religious Studies
Ernest Everton Bosworth (1928)	Accounting
Arthur G. Bristow Bouquet (1925)	Vegetable Gardening
Sue Bowman (1998)	Extension Service
Charles Boyer (1999)	Horticulture
William James Brennan (1975)	Assistant Dean of Students
Elizabeth L. Brose (1994)	O.S.U. Foundation
Andrew V. Z. Brower (2001)	Entomology
Colin B. Brown (1996)	Civil Engineering
George W. Brown (1982)	Forest Engineering
Perry J. Brown (1984)	Resource Recreation Management
Walter Sheldon Brown (1927)	Horticulture
John C. Buckhouse (1983)	Rangeland Resources
D. Mike Burgett (1990)	Entomology
Leslie Davis Burns (1994)	Apparel, Interiors, Housing & Merchandising
James Frederick Bursch (1925)	Psychology & Education
Wayne Vincent Burt (1959)	Oceanography
John Cole Burtner (1930)	College News Service
Robert M. Burton, Jr. (1999)	Mathematics
Karyle Butcher (1996)	Library
Joseph Shirey Butts (1941)	Biochemistry
John Vincent Byrne (1968)	Oceanography
H. Ronald Cameron (1969)	Botany & Plant Pathology
Kenton L. Chambers (1979)	Botany & Plant Pathology
Vernon Hendrum Cheldelin (1957)	Chemistry
Herbert Ellsworth Childs (1948)	English
Bert Einar Christensen (1950)	Chemistry
Charles Lester Clark (1948)	Mathematics
Richard L. Clinton (1987)	Political Science
James R. Coakley (1999)	Business
Stella M. Coakley (1991)	Botany & Plant Pathology
Harold Cockerline (1944)	Electrical Engineering
Vicki Collins (1998)	English
D. Kay Conrad (1986)	Admissions
George H. Constantine (1988)	Pharmacy
Lawrence David Coolidge (1953)	Business

Martin Portman Coopey (1954)	Civil Engineering
George Copa (2001)	School of Education
John Ritchie Cowan (1962)	Farm Crops
George Bryan Cox (1929)	Industrial Arts
Joseph Alfred Cox (1949)	Physical Education
A. Morrie Craig (1979)	Veterinary Medicine
R. P. "Midge" Cramer (1979)	Physical Education
John A. Crawford (1979)	Fisheries & Wildlife
Lloyd E. Crisp (1985)	Speech
William Ramsden Crooks (1966)	Psychology
Frank R. Cross (1982)	Education
Frederick A. Cuthbert (1931)	Landscape
Charles Henry Dailey, Jr. (1964)	Physical Education
John Rowland Davis (1972)	Agricultural Engineering
Murray Drayton Dawson (1966)	Soils
Irma Delson (1996)	Oceanography
Douglas A. Derryberry (1999)	Psychology
Ernest Milton Dickinson (1942)	Veterinary Medicine
John Richard Dilworth (1949)	Forest Management
Roland Eugene Dimick (1936)	Fish and Game Management
Brian Dodd (1993)	Nuclear Engineering
Thurston Ermon Doler (1973)	Speech Communication
Harold Clarence Dorn (1973)	Journalism
James M. Douglass (1978)	Music
William Henry Dreesen (1943)	Economics
John Drexler, Jr. (1996)	Business
Andy Duncan (1997)	Extension & Experiment Station Communications
Daniel B. Dunham (1987)	Education
John M. Dunn (1985)	Physical Education
John Randolph DuPriest (1925)	Mechanical Engineering
Willis Pierre Duruz (1932)	Pomology
Betty Duvall (1998)	Education
Harry Tyson Easterday (1970)	Physics
Edison Ellsworth Easton (1964)	Business
Lisa S. Ede (1985)	English
David Eiseman (1974)	Music
Joseph Ellison (1929)	History
William Frederick Engesser (1948)	Industrial Engineering
Harold Eugene Enlows (1973)	Geology
Dianne K. Erickson (1994)	Science and Math Education

Thomas P. Evans (1983)	Science Education
John Leo Fairbanks (1925)	Art
Paul Farber (1992)	History
Richard Fast (1996)	Air Force Studies
David Faulkenberry (1982)	Statistics
Grant Stephen Feikert (1941)	Electrical Engineering
Roger Kenneth Fendall (1973)	Agronomy
William Kreiter Ferrell (1974)	Forest Management
Francis J. Flaherty (2001)	Mathematics
James A. Folts (1992)	Journalism/Art
Walter Cyril Foreman (1957)	English
Neil E. Forsberg (1996)	Animal Science
Herman Carl Forslund (1950)	Pharmaceutical Chemistry
Fred Wayne Fox (1973)	Science Education
Sally K. Francis (1988)	Apparel, Interiors and Merchandising
Robert J. Frank (1977)	English
Leonard H. Friedman (1996)	Public Health
Virgil Haven Freed (1969)	Agricultural Chemistry
Harry Freund (1974)	Chemistry
Charles Bostwick Friday (1963)	Economics
Erik Fritzell (1998)	Fish and Wildlife
Herbert Farley Frolander (1970)	Oceanography
John L. Fryer (1994)	Microbiology
D.S. "Pete" Fullerton (1982)	Pharmacy
Wilbert Gamble (1970)	Biochemistry
John Clifton Garman (1943)	Physics
Robert Eugene Gaskell (1964)	Mathematics
Forrest James Gathercoal (1973)	Careers, Planning, and Placement
Wallace Eugene Gibbs (1964)	Registrar
Heber Howard Gibson (1927)	Agricultural Education
Earl C. Gilbert (1926)	Physical Chemistry
George Walter Gleeson (1938)	Chemical Engineering
Cheryl Glenn (1993)	English
Earl Goddard (1950)	Business
Erlinda Gonzales-Berry (2000)	Ethnic Studies
Delmer Morrison Goode (1944)	Publications
Samuel Herman Graf (1932)	Engineering Research
Crawford Henderson Graham (1971)	Alumni Relations
Kinsey B. Green (1994)	Home Economics
James Willard Groshong (1961)	English



Amy Gush (1997)	Health & Human Performance
Robert Henry Hager (1925)	Basketball
James A. Haggart (2001)	Naval Science
David P. Hardesty (1986)	Art
Dianne W. Hart (1991)	Foreign Languages
Lafayette G. Harter, Jr. (1970)	Economics
Henry Hartman (1930)	Pomology
Charlotte J. Headrick (1986)	Speech Communications
Charles Oswald Heath (1959)	Engineering Materials
Kathleen F. Heath (1986)	Health & Physical Education
Jerry R. Heidel (1999)	Veterinary Medicine
Martin L. Hellickson (1987)	Agricultural Engineering
Robert Wesley Henderson (1949)	Agricultural Experiment Station
Jon (Joe) Hendricks (1990)	Sociology
Roy Reno Hewitt (1925)	Political Science
R. Gary Hicks (1979)	Civil Engineering
Richard Morgan Highsmith (1956)	Natural Resources
Donald David Hill (1944)	Farm Crops
Frederick Lee Hisaw, Jr. (1976)	Zoology
Thomas Clark Hogg (1975)	Anthropology
Zoe Ann Holmes (1984)	Foods & Nutrition
Clara Horne (1992)	Business
Clarence Warren Hovland (1953)	Philosophy & Religion
Donald Glen Humphrey (1968)	Biology
Donald R. Hunt (1961)	Reference Librarian
George Robert Hyslop (1927)	Farm Crops
John W. Irving (1989)	O.S.U. Foundation
Hugh Frank Jeffrey, Jr. (1974)	Business Affairs
William C. Jenne (1981)	Sociology
Charles Leslie Johnson (1925)	Mathematics
Kenneth B. Johnson (1996)	Botany & Plant Pathology
Richard S. Johnston (1982)	Agricultural and Resource Economics
Idwal Ralph Jones (1929)	Dairy Husbandry
Isaiah Jones (1998)	United Campus Ministry
J. Shirley Jones (1925)	Agricultural Chemistry
Walter Richard Jones (1932)	Aeronautical Engineering
Cheryl L. Jordan (1996)	Apparel, Interiors, Housing, & Merchandising
Darlene D. Judd (2001)	Entomology
Philip B. Kalar (1959)	KOAC Radio

William Alexander Kearns (1925)	Physical Education & Intercollegiate Athletics
Charles Samuel Keevil (1932)	Chemical Engineering
Mary W. Kelsey (1984)	Foods & Nutrition
Frederick Charles Kent (1928)	Mathematics
Sunil Khanna (1998)	Anthropology
Robert D. Kiekel (1986)	Foreign Languages
Paul E. Kifer (1975)	Food Science and Technology
Lynda J. King (1995)	Foreign Languages
Dale Earl Kirk (1970)	Agricultural Engineering
Andrew C. Klein (1998)	Nuclear Engineering
Glenn A. Klein (1980)	Extension Education
Ilene Kleinsorge (1998)	Business
Stuart Edward Knapp (1967)	Veterinary Parasitology
James George Knudsen (1961)	Chemical Engineering
Kenneth S. Krane (1990)	Physics
David S. Kragthorpe (1987)	Football Coach
James H. Krueger (1980)	Chemistry
Andrew S. Landforce (1972)	Wildlife Management Specialist
Herbert Reynolds Laslett (1930)	Psychology
William Evans Lawrence (1927)	Plant Ecology
Stephen J. Lawton (1987)	Business
Robert Davis Layton (1975)	Civil Engineering
John W. Lee (1989)	Mathematics
Phyllis Lee (1994)	Multicultural Affairs
Albert Lewis Leeland (1970)	Elementary Education
JoAnn C. Leong (1985)	Microbiology
Murray Levine (1998)	Oceanic & Atmospheric Sciences
Jerome Ching Ren Li (1957)	Mathematics
Hiram W. Li (1998)	Fisheries & Wildlife
Judith Li (1998)	Fisheries & Wildlife
Harold Maurice Livingston (1969)	Speech
Carl Allen Lodell (1930)	General Manager, Associated Students
Susan Longerbeam (1998)	Student Health Services
Arvid Turner Lonseth (1963)	Mathematics
Ronald P. Lovell (1991)	Journalism/CLA Dean's Office
Jane Lubchenco (1990)	Zoology
Bruce Lulow (1982)	O.S.U. Bookstore
Alfred Gunn Lunn (1928)	Poultry Husbandry
Walter I. Lusetti (1974)	Foreign Languages
S.E. "Sally" Malueg (1983)	Foreign Languages

Thomas J. Maresh (1983)	Geography
Albert William Marsh (1953)	Soils
Donald Joseph Martel (1955)	Landscape Architecture
George Youlles Martin (1943)	College Press & Clerical Exchange
Micheal V. Martin (1985)	Agricultural and Resource Economics
James McAlexander (1998)	Business
Rachelle McCabe (1991)	Music
Thomas C. McClintock (1967)	History
Captain Thomas McCormick (1927)	Military Science and Tactics
Walter Fraser McCulloch (1946)	Forestry
Mina R. McDaniel (1989)	Food Science and Technology
Lois A. McGill (1978)	Food Science and Technology
Thomas E. McLain (1993)	Forest Products
Robert O. McMahon (1986)	Forest Products
B. Starr McMullen (1999)	Economics
Janice Kay McMurray (1999)	Agricultural Sciences
Frank Paden McWhorter (1940)	Plant Pathology
Hyman Meltzer (1925)	Psychology & Education
Terry L. Miller (1990)	Agricultural Chemistry
William Edmund Milne (1934)	Mathematics
John Ronald Miner (1976)	Agricultural Engineering
Charles Buren Mitchell (1931)	Public Speaking
Charles Arthur Mockmore (1928)	Civil Engineering
Harold William Moe (1963)	Physical Education
Cal Graham Monroe (1969)	State Extension Agent, 4-H/Youth Development.
Kathleen D. Moore (1989)	Philosophy
Sylvia Moore (1998)	Conferences & Special Events
Alice Mills Morrow (2000)	Extension-Family Economics
Robert V. Mrazek (1986)	Chemical Engineering
Dwight Curtis Mumford (1946)	Farm Management
J. Kenneth Munford (1950)	English
Tom Munnerlyn (2000)	Director, Career Services
William Payne Nagel (1970)	Forest Entomology
Herbert Benjamin Nelson (1932)	English
Milton Nels Nelson (1929)	Economics & Sociology
Joseph W. Nibler (1998)	Chemistry
Janet Nishihara (1999)	Educational Opportunities Program
Thomas Blaney Niven (1950)	Food Technology
Logan A. Norris (1986)	Forest Science
John Philip O'Neill (1967)	Family Life



James Edmund Oldfield (1958)	Animal Husbandry
Keith Floyd Oles (1969)	Geology
Michael V. Oriard (1980)	English
Miriam W. Orzech (1993)	Academic Affairs
Robert Ambrose Osborn (1929)	General Chemistry
James Carey Othus (1927)	Mechanics & Materials
Richard Eugene Pahre (1971)	Financial Aid
Daniel Panshin (1977)	Oceanography
Leo W. Parks (1967)	Microbial Physiology
Frank W. Parr (1931)	Education
Henry Richard Patterson (1925)	Logging Engineering
Kenneth Denton Patterson (1976)	Economics
Charles Wesley Peckham (1967)	Director of Printing
Dawn M. Peters (1996)	Statistics
Kurt M. Peters (1999)	Ethnic Studies
Roger Gene Peterson (1967)	Statistics
Sigurd Harlan Peterson (1926)	English
Robert Lee Phillips (1968)	Speech
Thomas K. Plant (2000)	Electrical and Computer Engineering
Dan Williams Poling (1940)	Assistant Dean of Men
Daniel Vandersall Poling (1930)	Radio Studio
Dow Peter Poling (1974)	Physical Education
Milosh Popovich (1950)	Mechanical Engineering
Nancy N. Powell (1984)	Library
Mary L. Powelson (1989)	Botany & Plant Pathology
Wilbur Louis Powers (1929)	Soils
Clara C. Pratt (1989)	Human Development & Family Studies
Frederick Earl Price (1934)	Agricultural Engineering
Paul A. Primak (1998)	International Exchange Coordinator, OSSHE
Mary S. Prucha (1998)	Graduate School
Roy C. Rathja (1998)	Engineering
Edwin Thomas Reed (1930)	College Editor
Marjorie A. Reed (1999)	Psychology
Robert Ray Reichart (1946)	English
Gordon M. Reistad (1999)	Mechanical Engineering
Jack Louis Rettig (1972)	Business Administration
Jose N. Reyes (1995)	Nuclear Engineering
Marvin R. Rice (1996)	Naval Science
Richard LeVoyle Richardson (1953)	General Engineering
Beth Rietveldt (2000)	Assistant to Director, Memorial Union

Paul Osborn Ritcher (1956)	Entomology
Alfred Nathan Roberts (1976)	Horticulture
Thomas Edward Roberts (1958)	Music
Alan H. Robinson (1999)	Nuclear Engineering
Reginald Heber Robinson (1928)	Agricultural Experiment Station
Robby O. Robson (1999)	Mathematics/Academic Affairs
John H. Rock (1977)	Art
Jefferson Belton Rodgers (1950)	Agricultural Engineering
Jon R. Root (1987)	Communication Media Center
Debra Rose (1991)	Exercise & Sport Science
Nancy Rosenberger (1990)	Anthropology
Annette M. Rossignol (1991)	Public Health
Philippe A. Rossignol (1996)	Entomology
Lewis Franklin Roth (1952)	Botany & Plant Pathology
Floyd Elba Rowland (1925)	Industrial Chemistry
Benjamin Franklin Ruffner (1939)	Aeronautical Engineering
Rebecca Sanderson (1998)	Counseling & Psychiatric Services
Ernest Nelson Sandgren (1968)	Art
Thomas F. Savage (1986)	Poultry Science
Henry M. Sayre (1988)	Art
Richard A. Scanlan (1983)	Food Science and Technology
Kay Schaffer (1999)	College of Liberal Arts
Albert Wilbur Schlechten (1943)	Mining Engineering
Alfred C. Schmitt (1925)	Finance and Administration
George Harwood Schroeder (1943)	Forestry
Harold Lester Schudel (1955)	Farm Crops
Jill R. Schuster (1998)	University Marketing
Allen Brewster Scott (1958)	Chemistry
Thomas George Scott (1968)	Wildlife Ecology
Herman Austin Scullen (1928)	Entomology
Mary Alice Seville (1993)	Business
Milton Conwell Sheely (1952)	Industrial Engineering & Industrial Arts
W. Bruce Shepard (1982)	Political Science
Joseph Ellsworth Simmons (1925)	Bacteriology
Dale D. Simmons (1984)	Psychology
Herbert Reeves Sinnard (1936)	Agricultural Engineering
Lucy S. Skjelstad (1985)	Horner Museum
Wendell Hartman Slabaugh (1960)	Chemistry
Anson H. "Pete" Smith (1950)	Co-op Bookstore
Francis Lawrence Snow (1925)	Industrial Journalism

Mark R. Sponenburgh (1984)	Art
Christine Sproul (1998)	International Education
Susan G. Stafford (1987)	Forest Science
Thurman James Starker (1925)	Forestry
Sam Stern (1984)	Industrial Education
Elmo Nall Stevenson (1942)	Science Education
John R. Stewart (1982)	Horticulture
Solon Allen Stone (1968)	Electrical Engineering
Robert Macleod Storm (1956)	Zoology
Lee R. Strandberg (1999)	Pharmacy
Lester Braden Strickler (1960)	Business Administration
Ernst Theodore Stuhr (1938)	Pharmacology & Pharmacognosy
John Max Swarthout (1948)	Political Science
Kline Ruthven Swygard (1954)	Political Science
Steven D. Tesch (2001)	Forest Engineering
Charles Edwin Thomas (1928)	Mechanics and Materials
T. Darrah Thomas (1981)	Chemistry
George Earl Thornburgh (1970)	Mechanical Engineering
Gary H. Tiedeman (1978)	Sociology
Edward Fritchhoff Torgerson (1938)	Soils
Richard E. Towey (1989)	Economics
Clifford Wayne Trow (1972)	History
Juan Antonio Trujillo (2000)	Foreign Languages
Ober Tyus (1996)	Linus Pauling Institute
Paul Bartholomew Valenti (1976)	Assistant Athletic Director
R. Charles Vars, Jr. (1985)	Economics
Ernest Van Court Vaughn (1928)	History
Ted S. Vinson (1985)	Civil Engineering
Major Herbert A. Wadsworth (1930)	Military Science and Tactics
Carl Bernard Wagner (1970)	Varsity Track Coach
Paul A. Walgren (1944)	Business Manager
Clyde Walker (1943)	Agricultural Engineering
Robert Boen Walls (1949)	Music
Austin Frederic Walter (1975)	Political Science
Jesse Seburn Walton (1956)	Chemical Engineering
Chih Hsing Wang (1964)	Chemistry
Rebecca L. Warner (1996)	Sociology
William W. Warren (1994)	Physics
Ernest William Warrington (1946)	Philosophy & Religion
Barney T. Watson (1999)	Food Science and Technology



Leonard J. Weber (1977)	Electrical Engineering
Jerome C. Weiler (1980)	Business Administration
C.J. "Bud" Weiser (1979)	Horticulture
Earl William Wells (1925)	Public Speaking
H.A. "Hod" Wells (1983)	Physical Plant
James Richard Welty (1969)	Mechanical Engineering
Willaim Irwin West (1955)	Forest Products
Paul Henry Weswig (1950)	Biochemistry
Charles Edward Wicks (1962)	Chemical Engineering
Ernest Herman Wiegand (1925)	Horticultural Products
Billy Hughel Wilkins (1974)	Economics
William Donald Wilkinson (1941)	Geology
George Alfred Williams (1930)	Mathematics
Roger John Williams (1934)	Chemistry
Stanley E. Williamson (1966)	Science Education
James B. Wilson (1983)	Forest Products
Robert E. Witters (1996)	Crop and Soil Science
Thomas Leyba Yates (1974)	Administrative Systems Development
DeLoss Palmer Young (1953)	Speech
Edwin Arthur Yunker(1936)	Physics
Joe B. Zaerr (1980)	Forest Science
Robert Joseph Zaworski (1968)	Mechanical Engineering

## Membership - Chronological

### Charter Members - 1925

Lee Cleveland Ball	Accounting
Howard Phillips Barss	Botany & Plant Pathology
Arthur G. Bristow Bouquet	Vegetable Gardening
James Frederick Bursch	Psychology & Education
John Randolph DuPriest	Mechanical Engineering
John Leo Fairbanks	Art
Robert Henry Hager	Basketball
Roy Reno Hewitt	Political Science
Charles Leslie Johnson	Mathematics
J. Shirley Jones	Agricultural Chemistry
William Alexander Kearns	Physical Education & Intercollegiate Athletics
Hyman Meltzer	Psychology & Education
Henry Richard Patterson	Logging Engineering
Floyd Elba Rowland	Industrial Chemistry
Alfred C. Schmitt	Finance and Administration
Joseph Ellsworth Simmons	Bacteriology
Francis Lawrence Snow	Industrial Journalism
Thurman James Starker	Forestry
Earl William Wells	Public Speaking
Ernest Herman Wiegand	Horticultural Products

### 1926

Earl C. Gilbert	Physical Chemistry
Sigurd Harian Peterson	English

### 1927

Walter Sheldon Brown	Horticulture
Heber Howard Gibson	Agricultural Education
George Robert Hyslop	Farm Crops
William Evans Lawrence	Plant Ecology
Captain Thomas McCormick	Military Science and Tactics
James Carey Othus	Mechanics and Materials

1928

Ernest Everton Bosworth  
Frederick Charles Kent  
Alfred Gunn Lunn  
Charles Arthur Mockmore  
Reginald Heber Robinson  
Herman Austin Scullen  
Charles Edwin Thomas  
Ernest Van Court Vaughn

Accounting  
Mathematics  
Poultry Husbandry  
Civil Engineering  
Agricultural Experiment Station  
Entomology  
Mechanics and Materials  
History

1929

William B. Anderson  
Ray Boals  
George Bryan Cox  
Joseph Ellison  
Idwal Ralph Jones  
Milton Nels Nelson  
Robert Ambrose Osborn  
Wilbur Louis Powers

Physics  
Mechanical Engineering  
Industrial Arts  
History  
Dairy Husbandry  
Economics & Sociology  
General Chemistry  
Soils

1930

John Cole Burtner  
Henry Hartman  
Herbert Reynolds Laslett  
Carl Allen Lodell  
Daniel Vandersall Poling  
Edwin Thomas Reed  
Major Herbert A. Wadsworth  
George Alfred Williams

College News Service  
Pomology  
Psychology  
General Manager, Associated Students  
Radio Studio  
College Editor  
Military Science and Tactics  
Mathematics

1931

Frederick A. Cuthbert  
Charles Buren Mitchell  
Frank W. Parr

Landscape  
Public Speaking  
Education

1932

Byron Arnold  
Willis Pierre Duruz  
Samuel Herman Graf

Organ, Piano, Musical  
History, Theory  
Pomology  
Engineering Research

Walter Richard Jones	Aeronautical Engineering
Charles Samuel Keevil	Chemical Engineering
Herbert Benjamin Nelson	English

1933

1934

William Edmund Milne	Mathematics
Frederick Earl Price	Agricultural Engineer
George Alfred Williams	Mathematics

1935

1936

Roland Eugene Dimick	Fish and Game Management
Herbert Reeves Sinnard	Agricultural Engineering
Edwin Arthur Yunker	Physics

1937

1938

Ira Shimmin Allison	Geology
George Walter Gleeson	Chemical Engineering
Ernst Theodore Stuhr	Pharmacology & Pharmacognosy
Edward Fritchhoff Torgerson	Soils

1939

Benjamin Franklin Ruffner	Aeronautical Engineering
---------------------------	--------------------------

1940

Arthur Lemuel Albert	Communication Engineering
Glenn Almer Bakkum	Sociology
Frank Paden McWhorter	Plant Pathology
Dan Williams Poling	Assistant Dean of Men



1941

Joseph Shirey Butts  
Grant Stephen Feikert  
William Donald Wilkinson

Biochemistry  
Electrical Engineering  
Geology

1942

Ernest Milton Dickinson  
Elmo Nall Stevenson

Veterinary Medicine  
Science Education

1943

William Henry Dreesen  
John Clifton Garman  
George Youlles Martin  
Albert Wilbur Schlechten  
George Harwood Schroeder  
Clyde Walker

Economics  
Physics  
Mining Engineering  
Forestry  
Agricultural Engineering

1944

Harold Cockerline  
Delmer Morrison Goode  
Donald David Hill  
Paul A. Walgren

Electrical Engineering  
Publications  
Farm Crops  
Business Manager

1945

1946

Walter Fraser McCulloch  
Dwight Curtis Mumford  
Robert Ray Reichart  
Ernest William Warrington

Forestry  
Farm Management  
English  
Philosophy & Religion

1947

1948

Herbert Ellsworth Childs	English
Charles Lester Clark	Mathematics
William Frederick Engesser	Industrial Engineering
John Max Swarthout	Political Science

1949

Joseph Alfred Cox	Physical Education
John Richard Dilworth	Forest Management
Robert Boen Walls	Music

1950

Duis Donald Bolinger	Physics
Bert Einar Christensen	Chemistry
Herman Carl Forslund	Pharmaceutical Chemistry
Earl Goddard	Business
J. Kenneth Munford	English
Thomas Blaney Niven	Food Technology
Milosh Popovich	Mechanical Engineering
Jefferson Belton Rodgers	Agricultural Engineering
Anson H. "Pete" Smith	Co-op Bookstore
Paul Henry Weswig	Biochemistry

1951

1952

Lewis Franklin Roth	Botany & Plant Pathology
Milton Conwell Sheely	Industrial Engineering and Industrial Arts

1953

Lawrence David Coolidge	Business
Clarence Warren Hovland	Philosophy & Religion
Albert William Marsh	Soils
Richard LeVoyle Richardson	General Engineering
DeLoss Palmer Young	Speech

1954

Martin Portman Coopey  
Kline Ruthven Swygard

Civil Engineering  
Political Science

1955

Paul Emile Bernier  
Donald Joseph Martel  
Harold Lester Schudel  
William Irwin West

Poultry Husbandry  
Landscape Architecture  
Farm Crops  
Forest Products

1956

Richard Alton Adams  
Richard Morgan Highsmith  
Paul Osborn Ritcher  
Robert Macleod Storm  
Jesse Seburn Walton

Physical Plant  
Natural Resources  
Entomology  
Zoology  
Chemical Engineering

1957

Vernon Hendrum Cheldelin  
Walter Cyril Foreman  
Jerome Ching Ren Li

Chemistry  
English  
Mathematics

1958

Samuel Hall Bailey  
James Edmund Oldfield  
Thomas Edward Roberts  
Allen Brewster Scott

Journalism  
Animal Husbandry  
Music  
Chemistry

1959

Carl Leonard Anderson  
  
Wayne Vincent Burt  
Charles Oswald Heath  
Philip B. Kalar

Oceanography  
Engineering Materials  
KOAC Radio

1960

Wendell Hartman Slabaugh  
Lester Braden Strickler

Chemistry  
Business Administration

1961

James Willard Groshong	English
Donald R. Hunt	Reference Librarian
James George Knudsen	Chemical Engineering

1962

John Ritchie Cowan	Farm Crops
Charles Edward Wicks	Chemical Engineering

1963

Charles Bostwick Friday	Economics
Arvid Turner Lonseth	Mathematics
Harold William Moe	Physical Education

1964

Charles Henry Dailey, Jr.	Physical Education
Edison Ellsworth Easton	Business
Robert Eugene Gaskell	Mathematics
Wallace Eugene Gibbs	Registrar
Chih Hsing Wang	Chemistry

1965

1966

Spencer Butler Apple, Jr.	Horticulture
William Ramsden Crooks	Psychology
Murray Drayton Dawson	Soils
Stanley E. Williamson	Science Education

1967

Stuart Edward Knapp	Veterinary Parasitology
Thomas C. McClintock	History
John Philip O'Neill	Family Life
Leo W. Parks	Microbial Physiology
Charles Wesley Peckham	Director of Printing
Roger Gene Peterson	Statistics

1968

John Vincent Byrne	Oceanography
Donald Glen Humphrey	Biology



Robert Lee Phillips	Speech
Ernest Nelson Sandgren	Art
Thomas George Scott	Wildlife Ecology
Solon Allen Stone	Electrical Engineering
Robert Joseph Zaworski	Mechanical Engineering
1969	
Robert Richard Becker	Biochemistry
H. Ronald Cameron	Botany & Plant Pathology
Virgil Haven Freed	Agricultural Chemistry
Harold Maurice Livingston	Speech
Cal Graham Monroe	State Extension Agent, 4-H/Youth Development
Keith Floyd Oles	Geology
James Richard Welty	Mechanical Engineering
1970	
Carl Eldon Bond	Fisheries
Harry Tyson Easterday	Physics
Herbert Farley Frolander	Oceanography
Wilbert Gamble	Biochemistry
Lafayette G. Harter, Jr.	Economics
Dale Earl Kirk	Agricultural Engineering
Albert Lewis Leeland	Elementary Education
William Payne Nagel	Forest Entomology
George Earl Thornburgh	Mechanical Engineering
Carl Bernard Wagner	Varsity Track Coach
1971	
Crawford Henderson Graham	Alumni Relations
Richard Eugene Pahre	Financial Aid
1972	
Anthony De Gray Birch	Budget Officer
John Rowland Davis	Agricultural Engineering
Andrew S. Landforce	Wildlife Management Specialist
Jack Louis Rettig	Business Administration
Clifford Wayne Trow	History
1973	
Thurston Ermon Doler	Speech Communication

Harold Clarence Dorn	Journalism
Harold Eugene Enlows	Geology
Roger Kenneth Fendall	Agronomy
Fred Wayne Fox	Science Education
Forrest James Gathercoal	Careers, Planning, & Placement

1974

James Edward Anderson	Basketball Coach
Jesse Franklin Bone	Veterinary Medicine
David Eiseman	Music
William Kreiter Ferrell	Forest Management
Harry Freund	Chemistry
Hugh Frank Jeffrey, Jr.	Business Affairs
Walter I. Lusetti	Foreign Languages
Dow Peter Poling	Physical Education
Billy Hughel Wilkins	Economics
Thomas Leyba Yates	Administrative Systems Development

1975

William James Brennan	Assistant Dean of Students
Thomas Clark Hogg	Anthropology
Paul E. Kifer	Food Science and Technology
Robert Davis Layton	Civil Engineering
Austin Frederic Walter	Political Science

1976

Frederick Lee Hisaw, Jr.	Zoology
John Ronald Miner	Agricultural Engineering
Kenneth Denton Patterson	Economics
Alfred Nathan Roberts	Horticulture
Paul Bartholomew Valenti	Assistant Athletic Director

1977

Robert J. Frank	English
Daniel Panshin	Oceanography
John H. Rock	Art
Leonard J. Weber	Electrical Engineering

1978

Larry Boersma	Soils
James M. Douglass	Music
Lois A. McGill	Food Science and Technology
Gary H. Tiedeman	Sociology

1979

Kenton L. Chambers	Botany & Plant Pathology
A. Morrie Craig	Veterinary Medicine
R. P. "Midge" Cramer	Physical Education
John A. Crawford	Fisheries & Wildlife
R. Gary Hicks	Civil Engineering
C.J. "Bud" Weiser	Horticulture

1980

Glenn A. Klein	Extension Education
James H. Krueger	Chemistry
Michael V. Oriard	English
Jerome C. Weiler	Business Administration
Joe B. Zaerr	Forest Science

1981

William C. Jenne	Sociology
T. Darrah Thomas	Chemistry

1982

George W. Brown	Forest Engineering
Frank R. Cross	Education
David Faulkenberry	Statistics
D.S. "Pete" Fullerton	Pharmacy
Richard S. Johnston	Agricultural and Resource Economics
Bruce Lulow	O.S.U. Bookstore
W. Bruce Shepard	Political Science
John R. Stewart	Horticulture

1983

Norman H. Anderson	Entomology
John C. Buckhouse	Rangeland Resources
Thomas P. Evans	Science Education
S.E. "Sally" Malueg	Foreign Languages

Thomas J. Maresh	Geography
Richard A. Scanlan	Food Science and Technology
H.A. "Hod" Wells	Physical Plant
James B. Wilson	Forest Products

1984

A. Eugene Abrassart	Business
Perry J. Brown	Resource Recreation Management
Zoe Ann Holmes	Foods & Nutrition
Mary W. Kelsey	Foods & Nutrition
Nancy N. Powell	Library
Dale D. Simmons	Psychology
Mark R. Sponenburgh	Art
Sam Stern	Industrial Education

1985

Lloyd E. Crisp	Speech
John M. Dunn	Physical Education
Lisa S. Ede	English
JoAnn C. Leong	Microbiology
Micheal V. Martin	Agricultural and Resource Economics
Lucy S. Skjelstad	Horner Museum
R. Charles Vars, Jr.	Economics
Ted S. Vinson	Civil Engineering

1986

Arnold P. Appleby	Crop Science
D. Kay Conrad )	Admissions
David P. Hardesty )	Art
Charlotte J. Headrick	Speech Communications
Kathleen F. Heath	Health & Physical Education
Robert D. Kiekel	Foreign Languages
Robert O. McMahon	Forest Products
Robert V. Mrazek	Chemical Engineering
Logan A. Norris	Forest Science
Thomas F. Savage	Poultry Science

1987

Matt M. Amano	Business
Linda L. Blythe	Veterinary Medicine



Richard L. Clinton	Political Science
Daniel B. Dunham	Education
Martin L. Hellickson	Agricultural Engineering
David S. Kragthorpe	Football Coach
Stephen J. Lawton	Business
Jon R. Root	Communication Media Center
Susan G. Stafford	Forest Science
1988	
Marcus J. Borg	Religious Studies
George H. Constantine	Pharmacy
Sally K. Francis	Apparel, Interiors & Merchandising
Henry M. Sayre	Art
1989	
John W. Irving	O.S.U. Foundation
John W. Lee	Mathematics
Mina R. McDaniel	Food Science and Technology
Kathleen D. Moore	Philosophy
Mary L. Powelson	Botany & Plant Pathology
Clara C. Pratt	Human Development & Family Studies
Richard E. Towey	Economics
1990	
Jack C. Bailes	Business
George S. Bailey	Food Science and Technology
D. Mike Burgett	Entomology
Jon (Joe) Hendricks	Sociology
Kenneth S. Krane	Physics
Jane Lubchenco	Zoology
Terry L. Miller	Agricultural Chemistry
Nancy Rosenberger	Anthropology
1991	
Helen M. Berg	Statistics
Stella M. Coakley	Botany & Plant Pathology
Dianne W. Hart	Foreign Languages
Ronald P. Lovell	Journalism/CLA Dean's Office
Rachelle McCabe	Music

Debra Rose	Exercise & Sport Science
Annette M. Rossignol	Public Health

1992

Boris W. Becker	Business
Paul Farber	History
James A. Folts	Journalism/Art
Clara Horne	Business

1993

Jayne A. Ackerman	Student Health Services
Brian Dodd	Nuclear Engineering
Cheryl Glenn	English
Thomas E. McLain	Forest Products
Miriam W. Orzech	Academic Affairs
Mary Alice Seville	Business

1994

Barbara S. Balz	Registrar
Stephen E. Binney	Nuclear Engineering
Elizabeth L. Brose	O.S.U. Foundation
Leslie Davis Burns	Apparel, Interiors, Housing & Merchandising
Dianne K. Erickson	Science and Math Education
John L. Fryer	Microbiology
Kinsey B. Green	Home Economics
Phyllis Lee	Multicultural Affairs
William W. Warren	Physics

1995

Lynda J. King	Foreign Languages
Jose N. Reyes	Nuclear Engineering

1996

SPRING

Colin B. Brown	Civil Engineering
Richard Fas(	Air Force Studies
Neil E. Forsberg	Animal Science
Kenneth B. Johnson	Botany & Plant Pathology
Dawn M. Peters	Statistics

Marvin R. Rice  
Ober Tyus  
Rebecca L. Warner

Naval Science  
Linus Pauling Institute  
Sociology

FALL

Karyle Butcher  
Irma Delson  
John Drexler, Jr.  
Leonard H. Friedman  
Cheryl L. Jordan  
  
Philippe A. Rossignol  
Robert E. Witters

Library  
Oceanic and Atmospheric  
Business  
Public Health  
Apparel, Interior , Housing, &  
Merchandising  
Entomology  
Crop and Soil Science

1997

Andy Duncan  
  
Amy Gush

Extension & Extension Station  
Communications  
Health & Human Performance

1998

Gary L. Beach  
Sue Bowman  
Vicki Collins  
Betty Duvall  
Erik Fritzell  
Isaiah Jones  
Sunil Khanna  
Andrew C. Klein  
Ilene Kleinsorge  
Murray Levine  
Hiram W. Li  
Judith Li  
Susan Longerbeam  
James McAlexander  
Sylvia Moore  
Joseph W. Nibler  
Paul A. Primak  
Mary S. Prucha  
Roy C. Rathja  
Rebecca Sanderson  
Jill R. Schuster  
Christine Sproul

Institutional Research  
Extension Service  
English  
Education  
Fish and Wildlife  
United Campus Ministry  
Anthropology  
Nuclear Engineering  
Business  
Oceanic & Atmospheric Sciences  
Fish & Wildlife  
Fish & Wildlife  
Student Health Services  
Business  
Conferences & Special Events  
Chemistry  
International Exchange Coordinator, OSSH  
  
Graduate School  
Engineering  
Counseling & Psychiatric Services  
University Marketing  
International Education

1999

Maya Abels	O.S.U. Foundation
Charles Boye)	Horticulture
Robert M. Burton, Jr.	Mathematics
James R. Coakley	Business
Douglas A. Derryberry	Psychology
Jerry R. Heidel	Veterinary Medicine
B. Starr McMullen	Economics
Janice Kay McMurray	Agricultural Sciences
Janet Nishihara	Educational Opportunities Program
Kurt M. Peters	Ethnic Studies
Marjorie A. Reed	Psychology
Gordon M. Reistad	Mechanical Engineering
Alan H. Robinson	Nuclear Engineering
Robby O. Robson	Mathematics/Academic Affairs
Kay Schaffer	College of Liberal Arts
Lee R. Strandberg	Pharmacy
Barney T. Watson	Food Science and Technology

2000

David A. Anderson	Air Force Studies
Roy G. Arnold	Agricultural Sciences
Erlinda Gonzales-Berry	Ethnic Studies
Alice Mills Morrow	Extension-Family Economics
Tom Munnerlyn	Director, Career Services
Thomas K. Plant	Electrical and Computer Engineering
Beth Rietveldt	Assistant to Director, Memorial Union
Juan Antonio Trujillo	Foreign Languages

2001

Jackie Balzer	Undergraduate Academic Program
Andrew Brower	Entomology
George Copa	School of Education
Frank Flaherty	Math Department
Jim Haggart	Naval Science
Darlene Judd	Entomology
Micheal Quinn	Computer Science
Steve Tesch	Forest Engineering



# Triad Club Constitution

As revised on April 13, 1972; September 28, 1978; April 19, 1979; May 1, 1986; March 2, 1989; May 15, 1997; and April 6, 2000.

## Article I - Name and Objectives

Section 1. The name of the organization shall be: The Triad Club of Oregon State University.

Section 2. The objectives of this organization are to make more effective the service which our institution (Oregon State University) renders to its students and the commonwealth; to stimulate greater accomplishments by our institution in the extension of human knowledge and its application to human welfare; to promote fellowship among its members; to encourage a better understanding between educational institutions; and to foster cooperation between students, faculty, and townspeople.

## Article II - Officers

Section 1. The officers of this organization shall consist of a President, Vice-President, Secretary, Treasurer, and past-president. These officers shall constitute the Executive Board. The officers shall be elected annually in the May to take office at the first meeting of the following Fall Term.

Section 2. In case any officer ceases to be able to perform his duties, a successor shall be appointed by the Executive Board for the unexpired term.

## Article III - Membership

Section 1. Only faculty of Oregon Sate University engaged in teaching, extension work, research, or other work closely related to the foregoing, who have been so engaged for at least one year, unless they have a short-term assignment at O.S.U. such as R.O.T.C., shall be eligible for membership. Insofar as possible a balanced departmental representation shall be observed in the choice of members.

Section 2. Members in residence shall be known as active members\*. Members who have left Corvallis or do not wish to been the mailing list or attend luncheons shall be known as Alumnus members\* (see also #7 of the By-laws). Active members maybe granted temporary leave or absence in accordance with the provisions of the By-laws (see #8 of the By-laws).

Section 3. Members, upon retiring from full time active service to the University, will be designated as Emeritus members\*. Emeritus members in residence who attend on a regular basis shall be designated as Active Emeritus\* and shall have the same rights, privileges and responsibilities as active members.

## Article IV - Meetings

- Section 1. Meetings shall be held at stated periods. They shall be of two kinds, namely open and closed. Open meetings are regular program meetings to which non-members maybe invited. Closed meetings to which non-member guests maybe invited. Closed meetings are business meetings exclusively for members of the Club.
- Section 2. The active members present shall constitute a quorum. A simple majority vote shall be required for the transaction of business at any regular or special meetings of the Club, except for the election of new members.

## Article V - Dues

- Section 1. All members except Alumnus members\* shall pay to the Club such dues as may be determined by it.

## Article VI - Amendments

- Section 1. Amendments to the Constitution must be circulated by e-mail, or in writing by USPS to those without e-mail access, least two (2) weeks prior to the next closed meeting of the Club and may be voted on at any subsequent regular closed meeting. A simple majority vote of the total active membership shall be required for the adoption of any amendment.

## By- Laws

1. Procedures in Electing New Members
  - a. The membership shall determine the limit of new members to elected. This will done in a manner determined by the Membership Committee. (This may involve a procedure in which the Committee recommends a limit to the Club, which limit is then approved or modified by the Club) The limit shall be determined at least one month prior to the election each year.
  - b. At that closed meeting the Membership Committee shall present to members for general discussion those nominees who qualify according to Article III, Section I of the Constitution.
  - c. At the closed meeting each nominee shall have a sponsor to present his/her qualifications.
  - d. After discussion, a secret ballot shall be taken. Members should vote "yes" or "no" on each candidate listed on the new-member-candidate ballots. The candidates are then ranked according to the total "yes" votes for each candidate. The candidates elected shall be those in the top ranking totalling the limit approved by the membership in accordance with TRIAD By-law I.a. In the event of tie votes on the bottom end of the ranking which would result in exceeding the limit, all candidates included in the tie votes shall be rejected. If any elected candidate shall decline, the next candidate down on the ranking shall be considered elected until the limit is reached.

- e. Those accepting the invitation to become a member shall be reported to the Membership Committee and invited to the scheduled closed meeting for the initiation of new members.
- f. The Membership Committee shall be in charge of the initiation and will designate the members to participate.
- g. A record shall be kept by each Membership Committee of the names those considered for membership, those proposed, and those who refused membership when it was offered to them. This record shall be for the guidance of Membership Committees appointed in succeeding years.
- h. The personnel of the Membership Committee each year shall consist of at least one, if possible, and not more than two hold-over members.

2. Initiation Fee

The initiation fee for new members shall be five dollars (\$5.00) payable at the time of the first billing by the Treasurer.

3. Club Dues

Club dues shall be twenty dollars (\$20.00) per school year payable with the Fall Term billing. Alumnus members\* shall be exempt from annual dues.

4. Assessments

Assessments may be levied by the Club to meet special expenses. Proposed assessments shall be presented to and approved by the Executive Board before being brought to vote. To become effective an assessment shall require a simple majority vote of the active members\* present at a regular closed meeting.

5. Disbursements

The Treasurer shall pay all bills of the Club as a whole, and shall pay the cost of the meal for any person or persons attending as guests invited by the Club as a whole, by the Executive Board, by the Membership Committee (as prospective members) or by the Program Committee in case of outside speakers and their guests.

6. Meetings

Regular meetings shall be held weekly during the academic year in connection with a noon luncheon at such time and place as the Executive Board of the Club as a whole may determine. A regular meeting may be suspended or a special meeting maybe called at any time by action of the Executive Board or by the majority vote of the Club in advance. It shall be the custom during the regular meetings for members to address each other by their given names, initials, or usual nicknames as approved by the person concerned.

7. Alumni Membership

In the event that an active member in good standing severs connection with the Club by reason of withdrawal from the institution, either permanently or temporarily, that member shall automatically assume the standing of Alumnus member\* of the Club. In the event of his/her return to Oregon State University his/her active status is automatically resumed (within the provisions of the Constitution). No Alumnus member shall be required to pay regular dues or assessments, nor can he/she claim any of the privileges of active membership except by invitation.

8. Discontinuance of Membership

- a. A member may request temporary leave of absence for a period not to exceed one year. Dues will not be assessed during this period.
- b. In the event of serious delinquency in payment of dues or assessments, marked irregularity of attendance, or for other reasonable cause, a member's name may be dropped from the membership roll by a simple majority vote of the membership roll by a simple majority vote of the active members present at a regular closed meeting upon recommendations of the Executive Board.
- c. A dropped member may be reinstated by a simple majority vote of the active members present at a regular closed meeting upon the recommendation of the Executive Board.

9. Committees

The Executive Board shall, the beginning of each Academic year, appoint committees such as those listed below to serve until the new officers take up their duties at the beginning of the following year:

1. Membership & Initiation
2. Program
3. Entertainment/Music
4. Publicity
5. Special Interests/Events
6. Budget
7. Historical
8. Sunshine
9. Nominations

The Executive Board, the President, or the Club as a whole may appoint special committees from time to time to serve until their object is attained or until discharged.

10. Amendments to the By-laws

Amendments to these By-laws may be circulated by e-mail or in writing by U.S.P.S. to those without e-mail access at least (2) weeks prior to the next closed and may be voted on at any closed meeting. A simple majority vote of the active membership present shall be necessary for adoption of any amendment.

Standing Rules

1. (A). Active members including Active Emeritus\* shall be billed for all lunches they attend. The minimum assessment each quarter will be the current cost of six (6) meals (plus dues as specified by the By-laws).
- (B). Active members including Active Emeritus members who fail to give timely notice of upcoming luncheon absences shall be charged for the luncheon as if attended.
- (C). Inactive members\* will pay dues but will be billed only for the cost of luncheons they attend.

\*Member: Anyone who has been elected as a member of Triad and has not resigned.

Active: Any member who is on the mailing list (receives meeting announcements) and is required to pay dues plus the cost of at least six luncheons per term.

Emeritus: Any member retired from full time service. Emeritus members may request either active or inactive status. (Will not be included in the department or unit count for membership purposes).

Alumnus: Any member not required to pay dues and not participating in any Triad functions. These members are either not in Corvallis or do not wish to be on the mailing list.

There are five types of membership:

Active or Inactive Member  
Active or Inactive Emeritus Member  
Alumnus Member

April 16, 2000



## Acknowledgments

This booklet in celebration of the 75th anniversary of the founding of Triad was produced by a specially appointed "Triad History Committee" composed of Ken Chambers, Irma Delson, Paul Farber (Fall Term), Jim Folts, Len Friedman, Corrine Gerig, David Hardesty, Tom McClintock, Kurt Peters, and Bill Wilkins, Committee Chair.

While every member of the Committee worked on the whole project, some contributions merit special recognition. Tom McClintock compiled the lists of members and authored the history contained herein. Zach Zarosinski, a graphic design major, and David Hardesty designed the booklet and supervised its printing. Elizabeth Miller, a photography major, with suggestions from Jim Folts, took and printed the large-group photographs of 2000-01 current and former members of Triad. Folts produced the identifying outlines of the group photographs and provided computer inserted additions to the November 9, 2000, shot. Corrine Gerig, Assistant to the Secretary of Triad, handled communications to present and former members. Kurt Peters supervised the distribution of prints of the large-group photos to those who had ordered copies, and Ken Chambers worked to assure the accuracy and completeness of the contents of the booklet. Although not on the Committee, long-time Triad members Bob Henderson and Pete Smith gave valued assistance.

Triad 2000-01 Secretary Phyllis Lee and Treasurer Charles Boyer provided support for the project, and President Len Friedman and Past President Irma Delson were fully participating members of the Committee. Bill Wilkins coordinated all those efforts.

