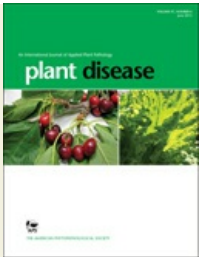


Subscribe Free alerts RSS



# plant disease

Editor-in-Chief: Mark L. Gleason  
Published by The American Phytopathological Society

ISSN: 0191-2917

### SEARCH

Enter Keywords

- Phytopathology
- Plant Disease
- MPPI

search

Advanced Search

### Inside the Journal

#### BACK ISSUES

(Issues before 1997)

First Look

View Most Downloaded Articles

About Plant Disease

Editorial Board

Submit a Manuscript

Author Instructions

Policies/Procedures

Online e-Xtras

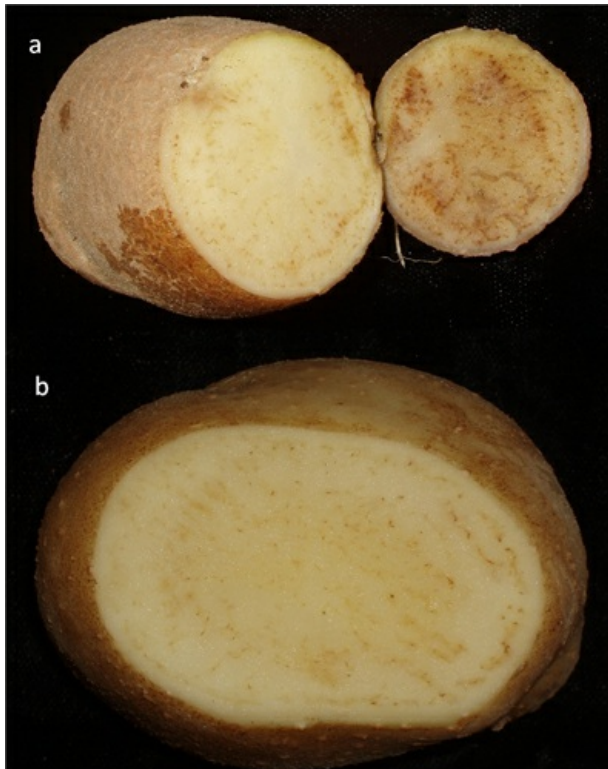
= "Open" Access

Home > Plant Disease > Table of Contents > Supplemental Material

Previous Article | Next Article

March 2012, Volume 96, Number 3  
Page 452  
<http://dx.doi.org/10.1094/PDIS-10-11-0894>

### Supplemental Material



Freshly cut tubers of **a**, cv. Alturas and **b**, cv. Pike showing symptoms of zebra chip disease.

### Quick Links

Add to favorites

E-mail to a colleague

Alert me when new articles cite this article

Download to citation manager

Related articles found in APS Journals