

*Supplementary Material***Extensive transcriptome changes during natural onset and release of vegetative bud dormancy in *Populus***

Glenn T. Howe^{1†}, David P. Horvath^{2†}, Palitha Dharmawardhana^{1,3}, Henry D. Priest^{4,5}, Todd C. Mockler^{3,4}, and Steven H. Strauss^{1*}

¹Department of Forest Ecosystems and Society, Oregon State University, Corvallis, OR, USA, ²Biosciences Research Laboratory, USDA-Agricultural Research Service, Fargo, ND, USA, ³Department of Botany and Plant Pathology, Oregon State University, Corvallis, OR, USA, ⁴Donald Danforth Plant Science Center, Saint Louis, MO, USA, ⁵Division of Biology and Biomedical Sciences, Washington University, Saint Louis, MO, USA

†These authors contributed equally to his work.

*Correspondence: Steven H. Strauss, Department of Forest Ecosystems and Society, Oregon State University, 321 Richardson Hall, Corvallis, OR, 97331-5752, USA.

Steve.Strauss@oregonstate.edu

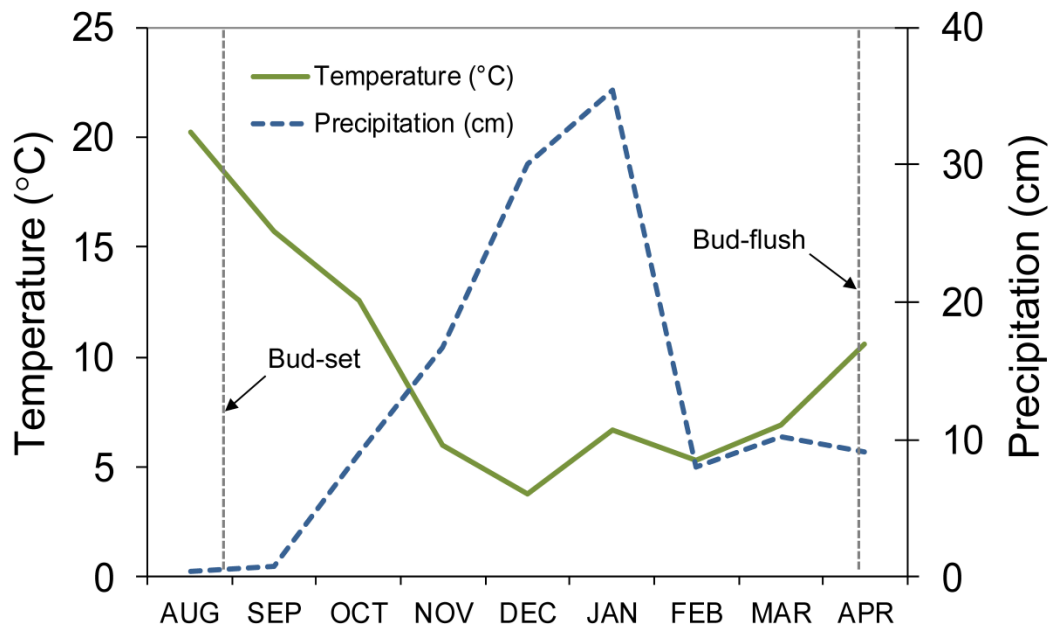
1. Supplementary Figures

Figure S1. Average monthly temperature and precipitation in Corvallis OR during the sample collection period.

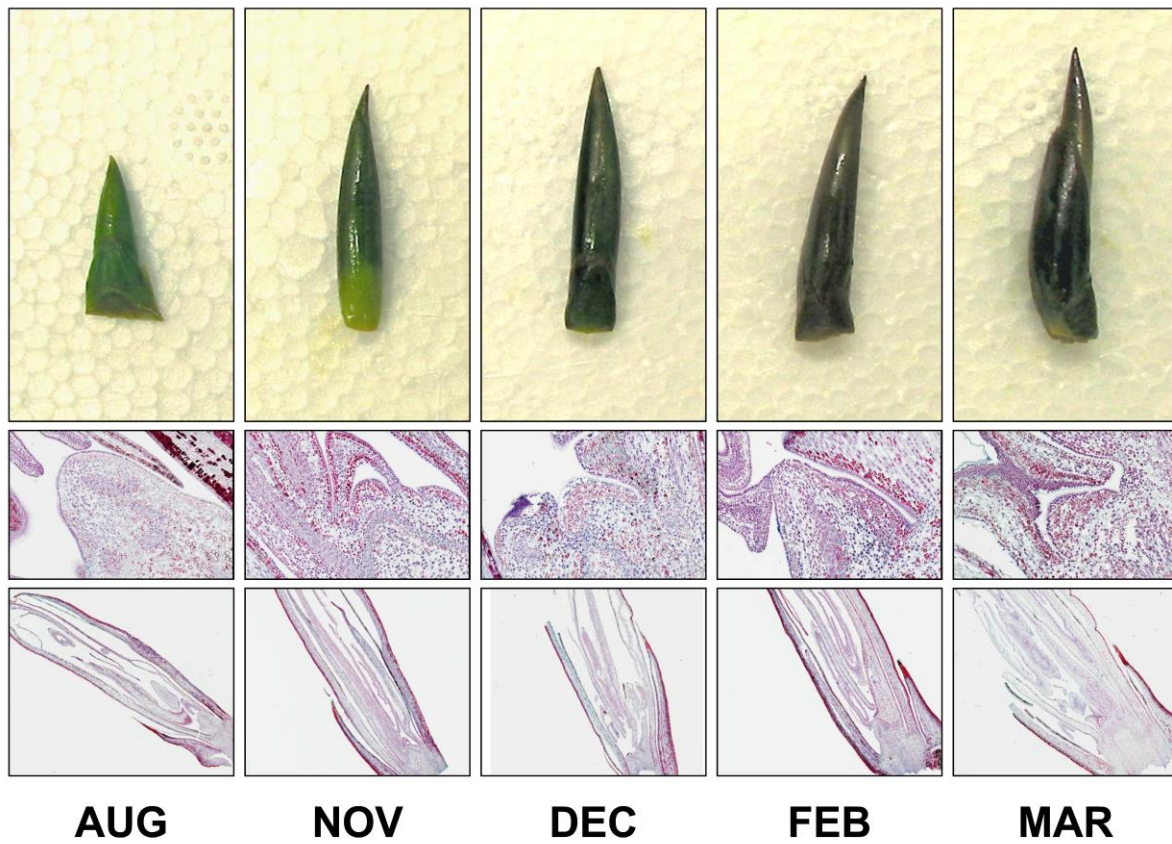


Figure S2. Bud morphology and histology during the sample collection period.