



One fish, two fish, Gold fish, Blue fish:

What happens when an unregulated fishery
encroaches on a regulated one?

IFFET 2016: Aberdeen, Scotland

Barbara Pollard Rountree
Barbara.rountree@noaa.gov

Northeast Fisheries Science Center

**NOAA
FISHERIES
SERVICE**

Where I'm going



Catch shares

- 5 year review

Golden Tilefish

- Performance measures

Blueline Threat

- Recreational
- Commercial

U.S. Catch share fisheries

1990–97: BC Sablefish, Halibut, Groundfish

1992: Community Dev. Quota

1995: Halibut, Sablefish

1998/00: AFA Pollock

2008: Non-Pollock (A80)

2005/6: Crab
Rationalization

2007: GOA Rockfish

2002: Sablefish

2011: Groundfish trawl

2010: Scallops,
NE Multispecies

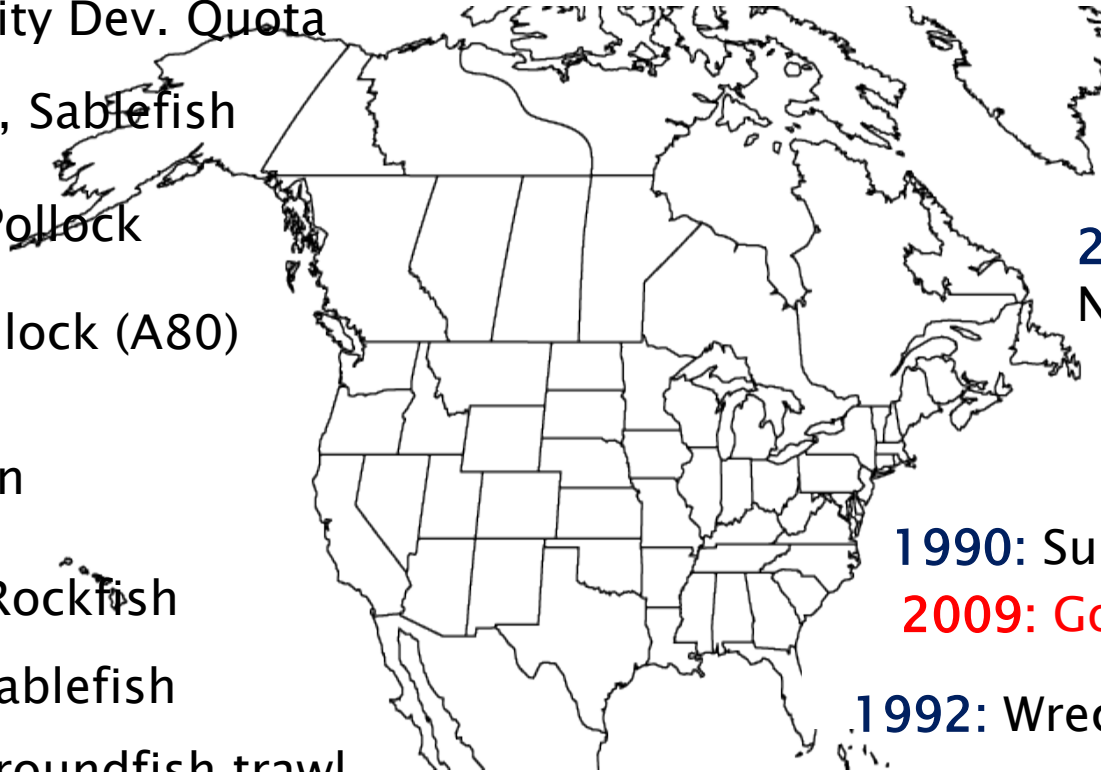
1990: Surf Clam, Ocean

2009: Golden Tilefish

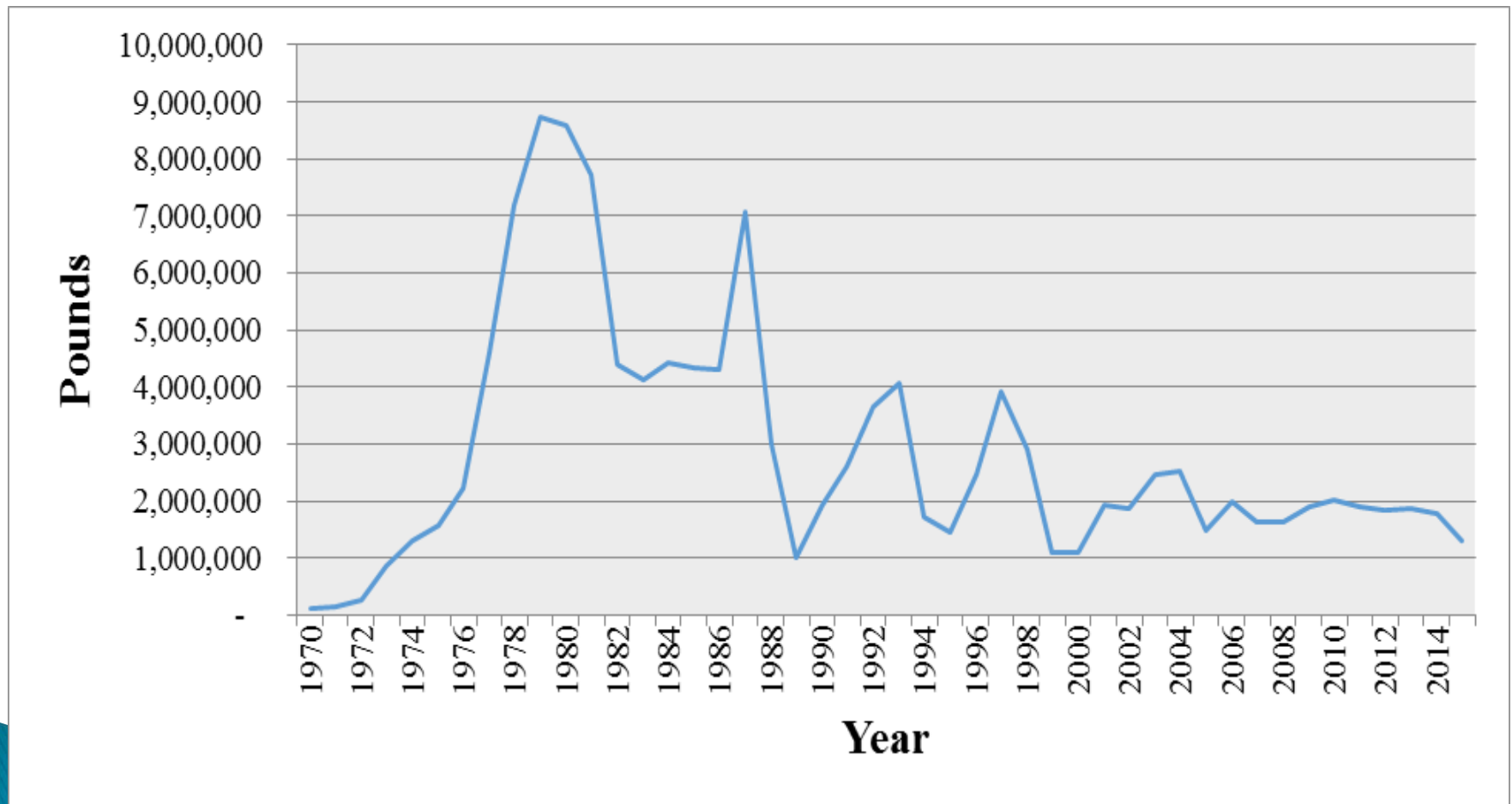
1992: Wreckfish

2007: Red Snapper

2010: Grouper-Tilefish



Commercial US Golden Tilefish landings (pounds) from Maine– Virginia,

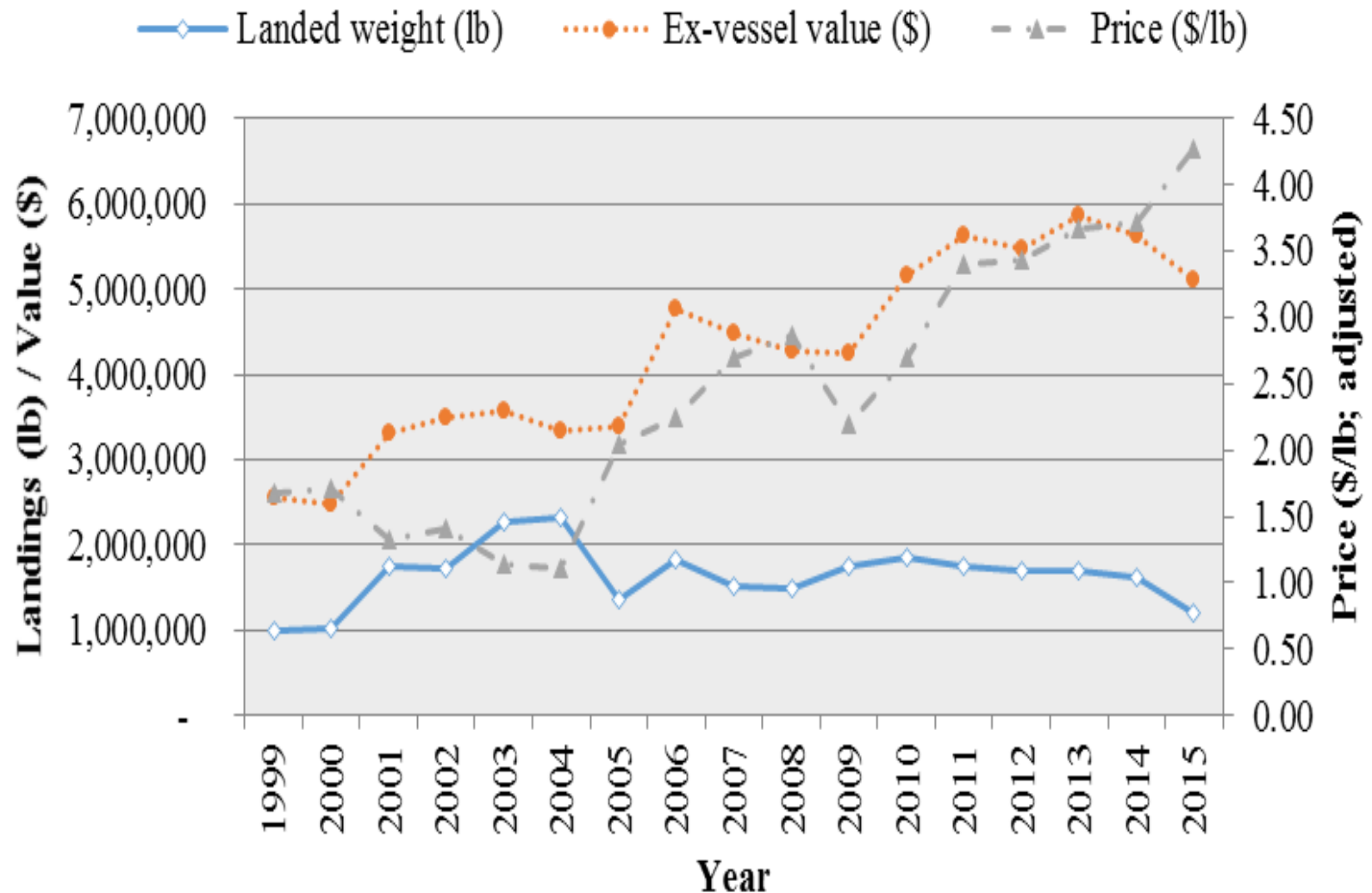


History

- ▶ 2001 – Original FMP
 - Allocate TAL into 4 GROUPS
 - FT1, FT2, PT, incidental
 - Fostered collaboration among some
 - Derby among others
- ▶ 2009 – Golden IFQ (2010 FY)
 - Allocate % quota to individual
 - NMFS gives IFQ allocation permit



Golden landings, value, & price



Review Topics

Goals and Objectives

Existing allocations

Eligibility requirements

Transferability

Quota Performance

Accumulation limits/caps

Cost Recovery

Data collection, Monitoring, and Enforcement

Duration

New Entrants

Auctions/Royalties



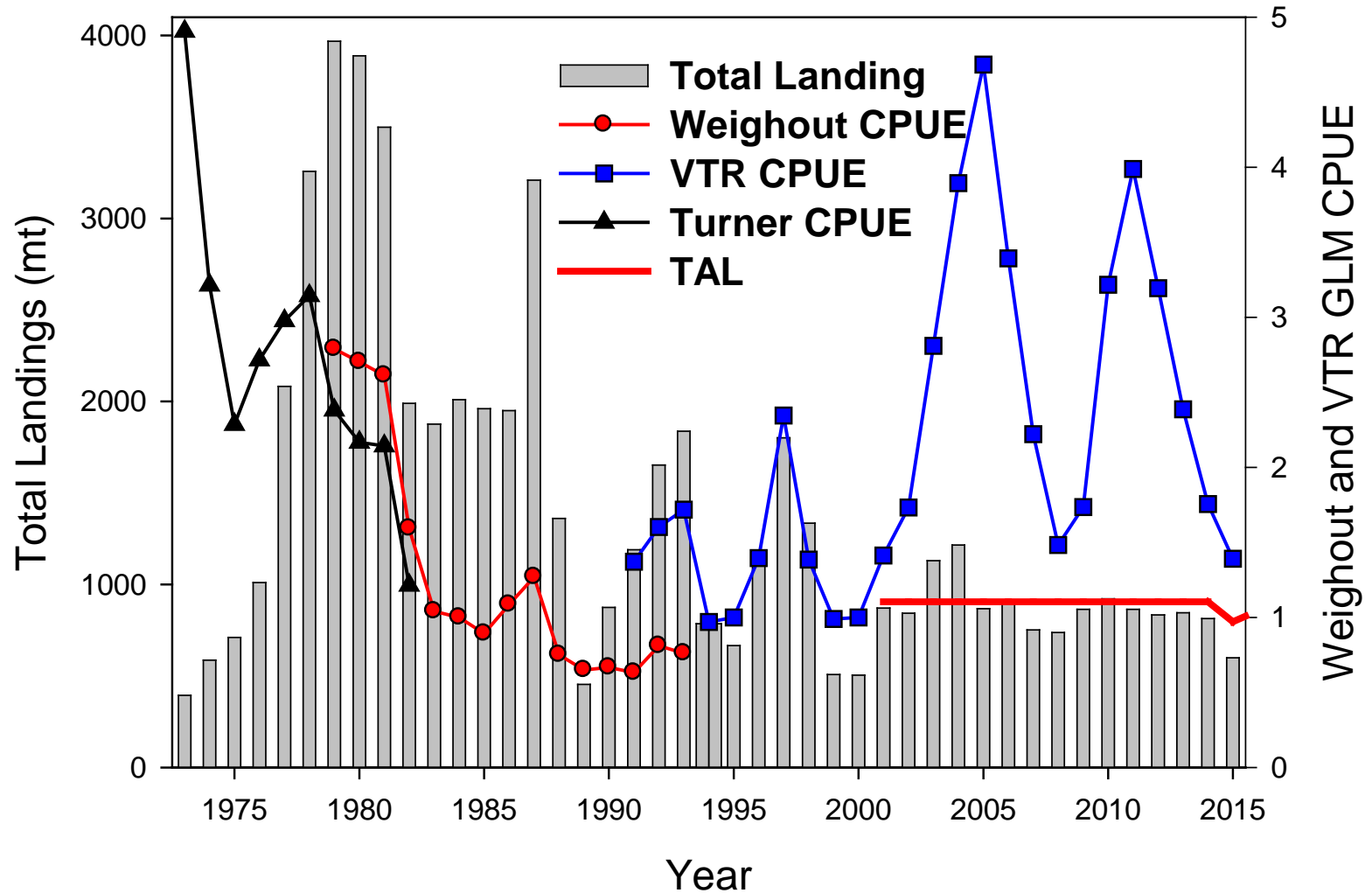
Review Topics

**Are the current fishery
regulations appropriate?**


**How could they be
improved?**



CPUE golden data



Performance Measures

- ▶ Quota allocated to CS program
 - ▶ Aggregate Landings
 - ▶ Entities holding share & allocation bet entities
 - ▶ Num Active vessels; Trips; Days at sea
 - ▶ Aggregate revenue from CS species
 - ▶ from non-CS species
 - ▶ Total Factor Productivity (Walden et al, 2014)
 - ▶ Distributional effects
 - Gini coefficient
- 

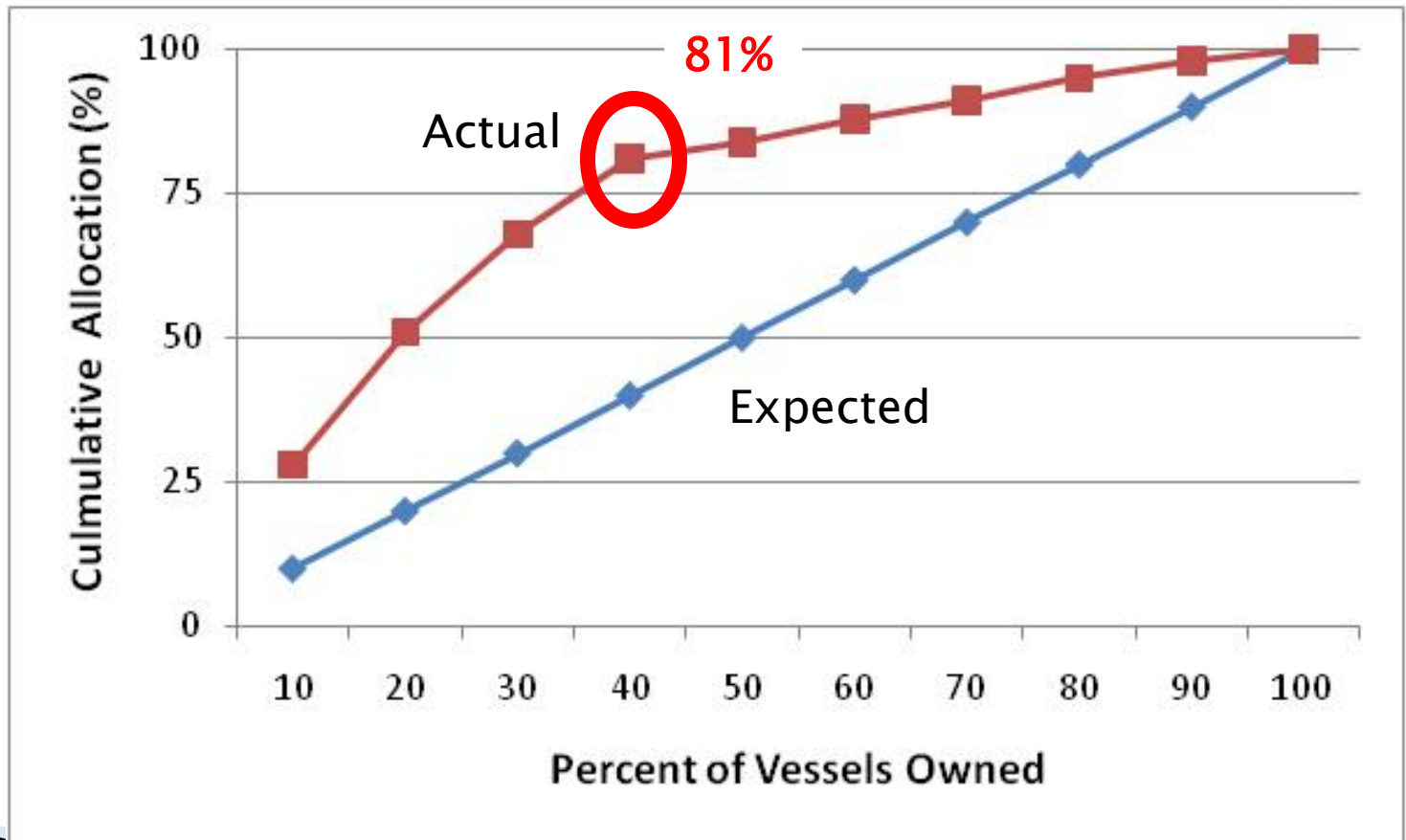


Behavior changes since IFQ

- Prices have become more stable
 - Still sensitive market
- Some costs down while others stayed same
 - Less fuel, hooks, bait, ice
 - Less wear and tear on gear
- Shorter, fewer trips
 - Increased efficiency
 - Greater flexibility
- Derby avoided



Concentration of Golden ownership



Blueline: An unregulated fishery ?

Concern

- landings of Blueline Tilefish in the Mid-Atlantic increasing rapidly
- biological characteristics make it highly susceptible to depletion

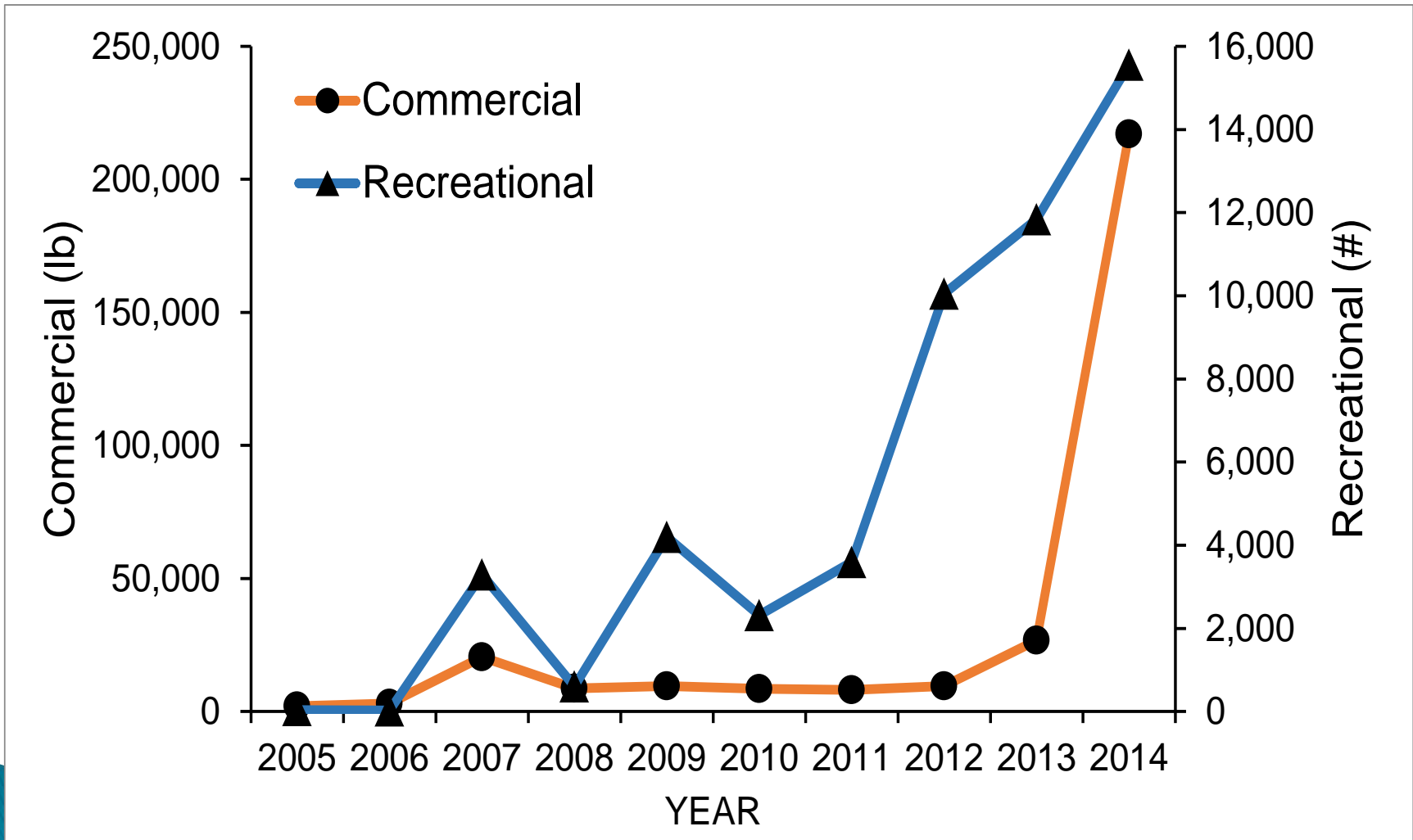
Council request EA : constrain landings

- Comm: 300 lbs. per trip
- Rec: 7 fish per person

New Amendment to Gold

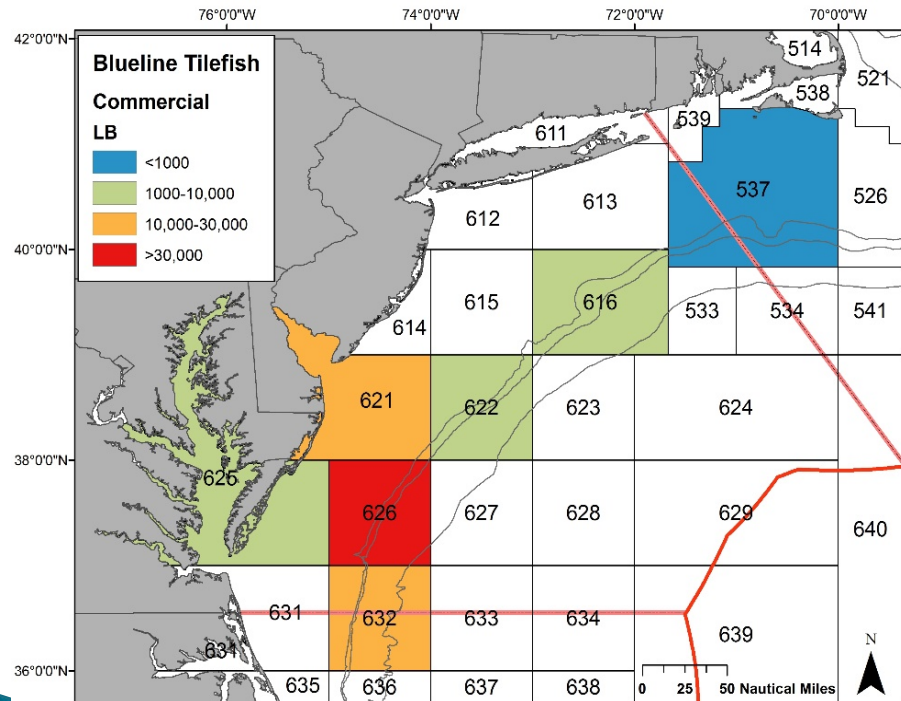


Blueline landings

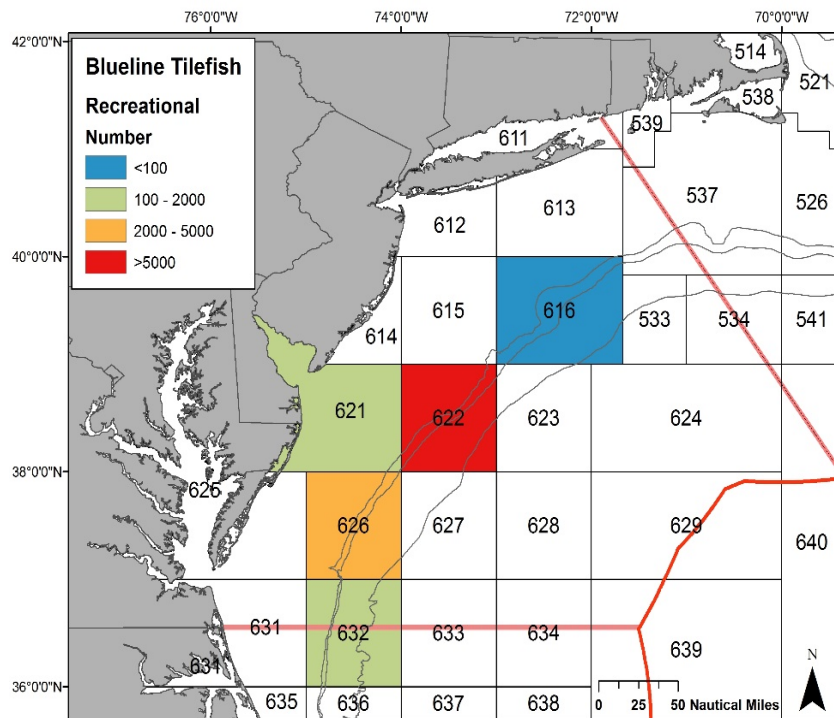


Blueline fishing locations, 2014

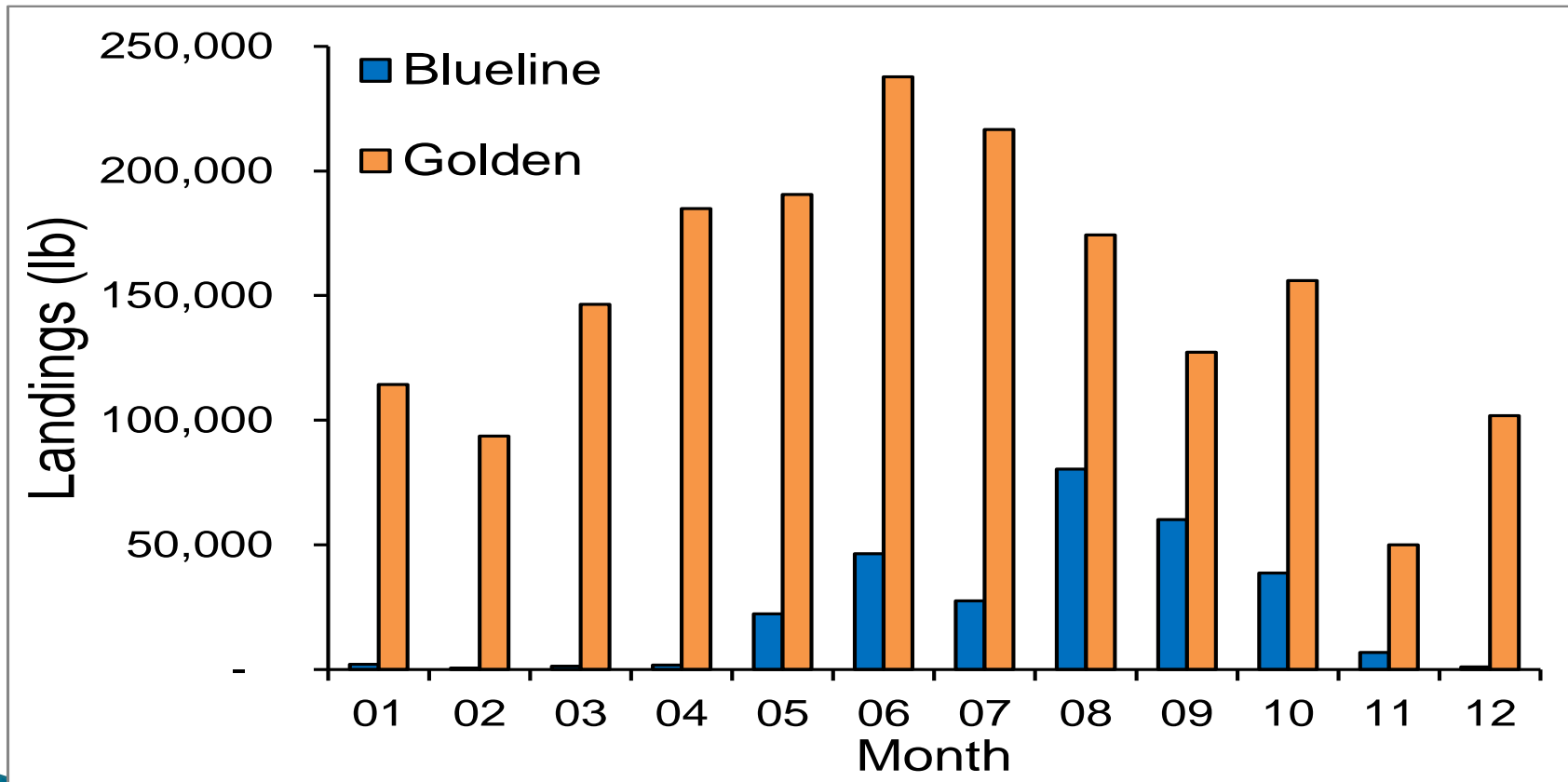
commercial



recreational



NE 2014 commercial landings by month



Still to do:

Quota and allocation markets

GARFO monitors perm or temp transfers–
IFQ allocation transfer form

- ▶ Price transfer analysis
 - Sales, leases, prices
- ▶ Allocation ratios
 - Lease/purchase price
 - Lease/ex-vessel rev
- ▶ Cost info & lay system: who bears cost?

Summary: food for thought

- ▶ Problems created when fish move into warmer waters.....
- ▶ Is this representative of future activity... due to climate change ?
- ▶ How will we respond?
- ▶ Differently than EAs?



Thank
you!



Questions?
Comments?