

30.71
07.321
E.3
20386

DOCUMENT
COLLECTION

OREGON
COLLECTION

Oregon Agricultural College Extension Service

PAUL V. MARIS

Director

BOYS' AND GIRLS' CLUBS

Cooperative Extension Work in Agriculture and Home Economics
Oregon Agricultural College, United States Department of Agriculture,
and State Department of Education, Cooperating.

Printed and Distributed in furtherance of the Acts of Congress of May 8 and
June 30, 1914.

GENERAL ANNOUNCEMENT OF BOYS' AND GIRLS' CLUB WORK

Club Series A-8

During the year 1921-22 ten thousand boys and girls in Oregon not only joined some Club but completed all the required work, making an exhibit and filing final reports in



Summer School group taken in front of Forestry Building.

the office of the State Club Leader at the Oregon Agricultural College, Corvallis, Oregon.

This indicates the Club idea is on a permanent basis and that some people in every county know the work. It also indicates that boys and girls from all parts of Oregon enjoy the work and are receiving profit, both financially and educationally, from it.

Because the Club work is so well established, therefore this bulletin is prepared to explain the plan of organization, the different projects, and the requirements and basis of awards.

DISCARD

Objects. Boys' and Girls' Club work consists in the dissemination of useful and practical instruction concerning special problems of immediate economic importance to the agricultural, livestock, and homemaking of the several communities, including demonstrations, exhibits, and judging work by Club members in the various projects. It aims to develop leaders, to train for achievement, and to teach the value of service for others.

How Developed. This is done by means of definite projects conducted so far as possible at the workers' homes and under the supervision and direction of a competent leader, and by lectures, demonstrations, bulletins, circulars, correspondence, and personal visits. It involves the actual selection of a definite project by the worker and the planning and



Wendling (Lane county) group arriving at Summer School.

keeping of an accurate cash and labor record, the necessary manual labor being done, so far as possible, by the project worker. The worker is also required to read and carefully study the information sent to him in relation to the project.

How Conducted. Club work is conducted by the United States Department of Agriculture and the Extension Service of the Oregon Agricultural College, cooperating with the State Department of Education.

GENERAL RULES FOR ALL CLUB WORK

1. Before organizing a Club, all rules, plans for organization, list of projects and their divisions, should be carefully studied.
2. The county school superintendent is in charge of all Club work undertaken in his county. He is assisted by the county Club agent, county agricultural agent and home

demonstration agent (in counties employing them), rural school supervisors, teachers, local Club leaders, and the county farm bureau, granges, parent-teacher associations, livestock breeders associations, and other organizations.

3. For information regarding Club organization and State premium lists, write to the State Superintendent of Public Instruction, Salem, Oregon. Regarding county premium lists and county organization, write to your county school superintendent, county Club agent, county agricultural agent, or home demonstration agent. Regarding Club organization, enrollment in Club projects, instruction in your project reports, or any other questions pertaining to your work, write to the State Club Leader, Oregon Agricultural College, Corvallis, Oregon.



Klamath county delegation leaving Klamath Falls for the Summer School session.

4. The premiums include those regularly offered by the State Fair Board of Directors; trips to the Oregon Agricultural College Summer Session, offered by business men of Portland through the efforts of the State Superintendent of Public Instruction, by the Union Pacific Railroad System, and by different county courts, county fair boards, parent-teacher associations, and other organizations; together with many cash and commodity prizes given at local, county, and state fairs.

5. The instructions for all exhibits and rules for the basis of awards at the State Fair, will be found in this circular. Instructions that relate to a particular project will be found in the project instructions sent to each Club member and local Club leader, for that particular project.

6. Any boy or girl who will be between the ages of 9 and 18, inclusive, on October 15, 1923, may become a Club member, whether attending school or not.

7. **Standard Clubs.** The following are the state and national requirements for a Standard Club:

- a. At least five members working on the same project.
- b. An adult local Club leader in charge during the Club year.
- c. Club organization with officers.
- d. A definite program of work for the Club year, filed in office of State Club Leader.



The Malheur county delegation which traveled over 400 miles to attend the Summer School.

e. At least six regular Club meetings during the Club year. The secretary should be required to keep definite record of these meetings and also of the progress of each member.

f. A local Club exhibit held annually.

g. A demonstration team of three members which must give at least one public demonstration in the community.

h. A judging team chosen by competition between the members.

i. At least 70 percent of the members completing the project and filing a final report with the State Club Leader.

j. An Achievement Day held at the close of the Club year.

When the first four requirements have been met the local leader should report to the county Club agent (if one is employed in your county), or to the State Club Leader, giving name of project, names of members, name of local leader, name of Club, and copy of program. The State Club Leader will then recommend to the United States Department of Agriculture that a Standard Club Charter be issued to the Club. When all the requirements have been met a national seal of achievement will be recommended.

8. When a Standard Club is organized the enrollments should be on Standard Club enrollment blanks, which may be obtained from the county school superintendent, county



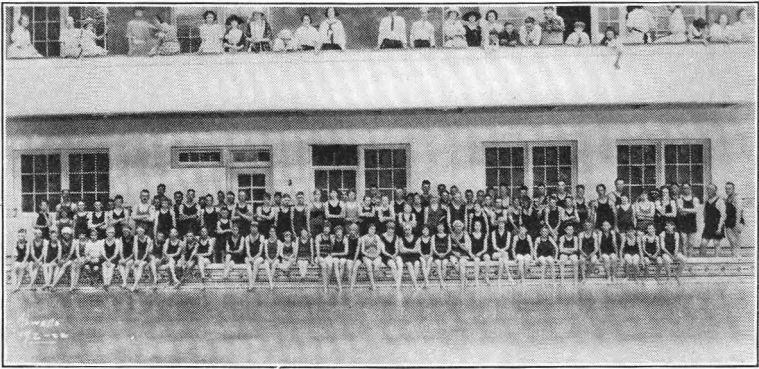
Multnomah county group at the Summer School.

Club agent, county agricultural agent, home demonstration agent, field worker from the Department of Education (Salem, Oregon), or State Club Leader (Corvallis, Oregon). One blank, original, duplicate, and triplicate, should contain the names of all members of the Standard Club, together with the name of the local leader and the officers of the Club. Send these blanks to the county Club agent, if you have one in the county; if not, send them to the State Club Leader at Corvallis, Oregon.

9. In communities where a Standard Club is not organized, either because there are not enough members or because for other reasons it is not deemed advisable, those wishing

the Club work should enroll as Club members, filling out individual enrollment cards and mailing them direct to the county Club agent or the State Club Leader at Corvallis, Oregon. These cards may be secured from the county school superintendent, county Club agent, county agricultural agent, home demonstration agent, field worker from the Department of Education at Salem, or State Club Leader at Corvallis, Oregon.

10. A certificate of award will be given to each Club in the state when 100 percent of the enrolled members complete their projects and make their reports and exhibits. This cer-



1922 Boys' and Girls' Clubs enjoying a swim in the College swimming pool.

tificate will be signed by the Secretary of Agriculture, Washington, D. C.; Walter M. Pierce, Governor of Oregon, W. J. Kerr, President of the Oregon Agricultural College; J. A. Churchill, Superintendent of Public Instruction; Paul V. Maris, Director of Extension Service; H. C. Seymour, State Club Leader; your county school superintendent; county Club agent; and local leader.

11. Club members should be willing to do the following:

- a. Do the project work as prescribed by the State Club Leader.
- b. Attend all Club meetings.
- c. Keep accurate record of all work performed.
- d. Write a story of the work done during the year.
- e. Make an exhibit of the Club work.
- f. Complete all work and reports.

12. Summer School. During the month of June a two-week Summer School for Club members is conducted at the Oregon Agricultural College.

Attendance. State winners in the projects and divisions of the projects at the State Fair, 1922, winners of the Union Pacific Railroad Co. prizes for 1922, also county winners from several counties. The expenses of the state winners are paid by Portland business men and by state and national pure-bred livestock breeders' associations; the expenses of the Union Pacific winners are paid by the Union Pacific Rail-



1922 Summer School students, in College tea-room, eating lunch prepared by themselves.

road system; the expenses of the county winners are paid by their respective counties.

May Attend. Any Club member in the State who is enrolled in a project for 1922-23 and has all work up to date may attend by paying his or her room and board fee of \$15.00 for the two weeks, and traveling expenses to and from the College.

Delegates. Many Clubs have and are raising money with which to send one or more delegates to the Summer School.

Closing Date. Club members planning to attend the Summer School should notify the State Club Leader on or before June 1, 1923.

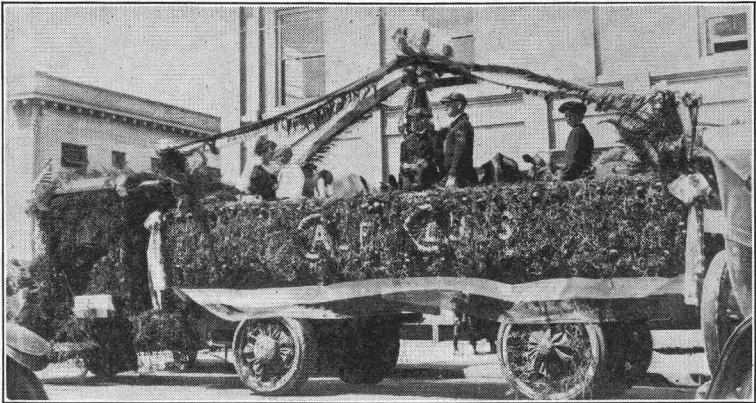
CLUB PROJECTS FOR OREGON BOYS AND GIRLS

1. **Corn Growing Project.** The growing of at least one eighth of an acre of corn.

Exhibit. An exhibit consisting of ten ears of field corn, sweet corn, or popcorn grown and selected by Club members, is required in all local, county, and state Club contests.

Basis of Awards. The awards in all Corn Club contests will be as follows:

(a) Exhibit	75
(b) Final Project Report—	
Best yield	10
Best profit on investment	10
Completeness and accuracy of report.....	5 25
Possible score	100



Tillamook Club float which took first place in the 4th of July parade.

2. **Potato Growing Project.** The growing of at least one eighth of an acre of potatoes.

Exhibit. An exhibit of one peck of market potatoes, grown and selected by Club member, is required in all local, county, and state Club contests.

Basis of Awards. The awards in all Potato Club contests will be as follows:

(a) Exhibit	75
(b) Final Project Report—	
Best yield	10
Best profit on investment	10
Completeness and accuracy of report.....	5 25
Possible score	100

3. Vegetable Gardening Project. The growing of a vegetable garden of at least 600 square feet, with at least five varieties.

Exhibit. A vegetable exhibit, consisting of five and no more different varieties, is required in all local, county, and state Club contests. One head of cabbage, cauliflower, lettuce, spinach, kale, etc.; one melon, pumpkin, squash, cucumber, etc.; one bunch of radishes, green onions, etc. (five plants to each bunch); five specimens each of potatoes, beets, carrots, dried onions, garlic, etc., shall constitute a variety exhibit.

Basis of Awards. The awards in all garden Club contests will be as follows:

(a) Exhibit	75
(b) Final Project Report—	
Best yield	10
Best profit on investment	10
Completeness and accuracy of report.....	5 25
	<hr/>
Possible score	100

4. Poultry Raising Project. Div. I. The care and management of at least five laying hens for a period of six months.

Div. II. The incubation of at least one sitting of hen eggs, or the securing of at least one dozen day-old chicks, and the care and management of the chicks for a period of four months.

Div. III. The incubation of at least one sitting of turkey eggs and care and management of the young turkeys for a period of four months.

Div. IV. The incubation of at least one sitting of duck eggs and the care and management of the young ducks for a period of four months.

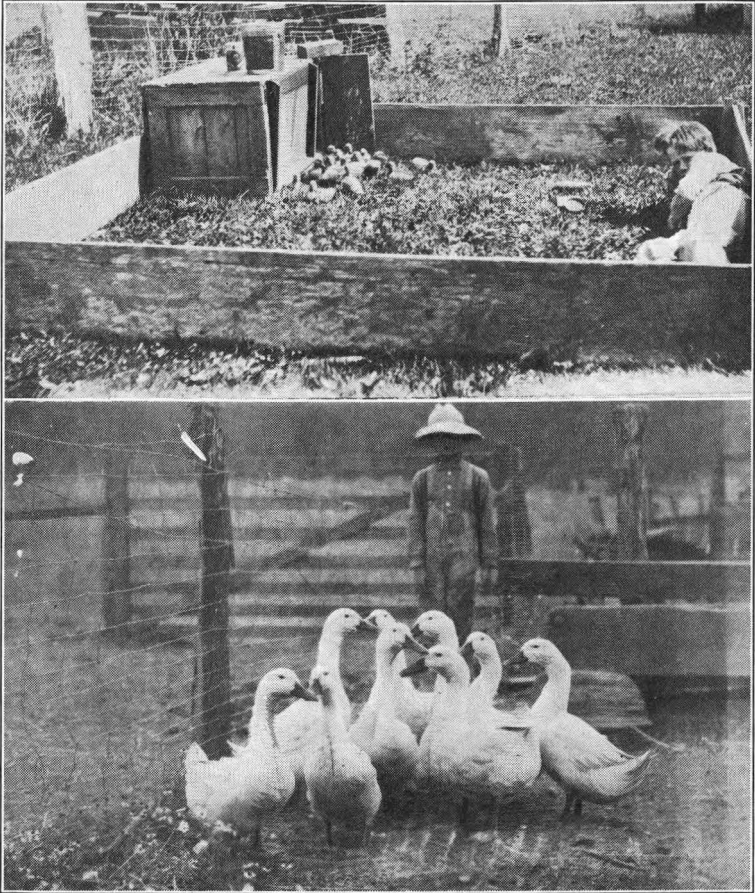
Exhibit. Exhibits shall consist as follows:

Div. I. Four hens selected from Club member's contesting flock.

Div. II. One cockerel, four pullets, selected from birds of Club member's own raising, or four capons of Club member's own raising.

Div. III. One male and one female selected from birds of Club member's own raising.

Div. IV. One male and two females selected from birds of Club member's own raising.



George Conner of Linn county at the beginning and the close of his Poultry work.

Basis of Awards. The awards in all Poultry Club contests will be as follows:

(a) Exhibit	75
(b) Final Project Report—	
Best yield	10
Best profit on investment.....	10
Completeness and accuracy of report.....	5
	<hr/> 25
Possible score	100

5. Pork Production Project. In all divisions of this project Club members are required to own the animals and if they are pure-bred, the registration papers must be in the name of the member.

Div. I. The care and management of one or more brood sows and their litters for a period starting at least one month before farrowing and continuing at least four months. Sows that will farrow after March 1 are recommended.

Div. II. The care and management of one or more pigs intended for market hogs from time weaned until ready for market. Pigs farrowed after March 1 are recommended.

Div. III. The care and management of one or more pure-bred pigs, either sex, intended for breeding purposes, from time weaned for a period of at least four months. Pigs farrowed after March 1 are recommended.

Each of the foregoing divisions includes the growing of the necessary feed so far as possible, and providing the necessary pasture.

Exhibit. Div. I. shall consist of sow and litter, or four pigs from the litter, that Club member owns and has cared for in Club work.

Div. II and III shall consist of pig or pigs that Club member owns and has cared for in Club work.

Basis of Awards.

Division I.

- | | |
|---|----|
| (a) Best animals | 65 |
| (b) Handling of animals in show ring | 10 |
| (c) Gain in weight on pigs and cost, including
keep of sow | 10 |
| (d) Completeness and accuracy of record book..... | 15 |

Possible score100

Division II and III.

- | | |
|---|----|
| (a) Best animals | 65 |
| (b) Handling of animals in show ring | 10 |
| (c) Gain in weight and cost of gain | 10 |
| (d) Completeness and accuracy of record book..... | 15 |

Possible score100

6. Sheep Raising Project. In all divisions of this project Club members are required to own the animals. If the ani-



Tillamook Guernsey Calf Club

imals are pure-bred, the registration papers must be in the name of the member.

Div. I. The care and management of one or more ewes and their lambs, starting at least one month before lambing time and continuing to August 31.

Div. II. The care and management of one or more lambs, intended for market purposes, from time lambbed until ready for market.

Div. III. The care and management of one or more yearlings, either sex, intended for breeding purposes, for a period of at least six months. All rams must be pure-bred.

Exhibit. Div. I shall consist of one or more lambs that Club member owns and has cared for in Club work.

Div. II shall consist of one or more market lambs that Club member owns and has cared for in Club work.

Div. III shall consist of one or more yearlings intended for breeding purposes that Club member owns and has cared for in Club work.

Basis of Awards.

Division I.

(a) Best lamb	65
(b) Handling of animal in show ring	10
(c) Gain in weight on lambs and cost, including keep of ewe	10
(d) Completeness and accuracy of record book.....	15

Possible score100



ation at the Guernsey Gaiety

Division II and III.

(a) Best lamb or yearling	65
(b) Handling of animals in show ring.....	10
(c) Gain in weight and cost of gain	10
(d) Completeness and accuracy of record book.....	15

Possible score100

7. Calf Raising Project. In all divisions of this project, Club members are required to own the animals. If the animals are pure-bred, registration papers must be in the name of the member.

Dairy Division. Div. I. The care and management of one or more calves of any dairy breed, dropped since August 1, 1922, for a period of at least four months. The calf must be by a registered sire, and if a bull must be pure-bred.

Div. II. The care and management of one or more yearling females, of any dairy breed, dropped between August 1, 1921, and August 1, 1922, for a period of at least six months. The animals must be by a registered sire.

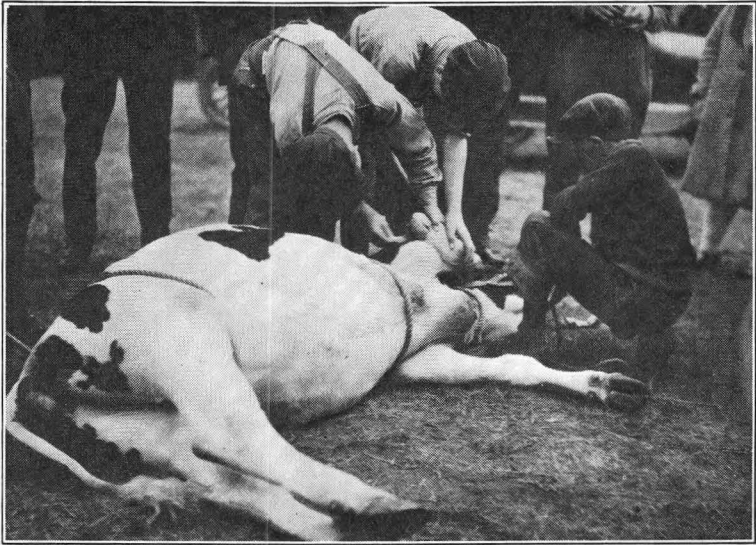
Div. III. Care and management of one or more females of any dairy breed, dropped before August 1, 1921, for a period of at least six months. The Club member must care for and keep records on the animal at least one month before freshening and at least four months after freshening, records to include milk production.

Beef Division. Div. IV. The care and management of one or more calves of any beef breed, dropped since September

1, 1922, for a period of at least four months. The calf must be by a registered sire, and if a bull must be pure-bred.

Div. V. The care and management of one or more females of any beef breed dropped between September 1, 1921, and September 1, 1922, for a period of at least six months. The animal must be by a registered sire.

Div. VI. The care and management, for a period of at least six months, of one or more females of any beef breed, dropped before September 1, 1921. The Club member must care for and keep records on the animal at least one month



Holstein Calf Club of Multnomah county demonstrating throwing and fitting of calves.

before freshening, on cow and calf at least four months and until calf is weaned, if possible.

Exhibit. Div. I, II, IV, and V shall consist of animal that Club member owns and has cared for in Club work. Div. III shall consist of cow that Club member owns and has cared for in Club work. Div. VI shall consist of cow and calf that Club member owns and has cared for in Club work.

Basis of Awards.**Division I and II.**

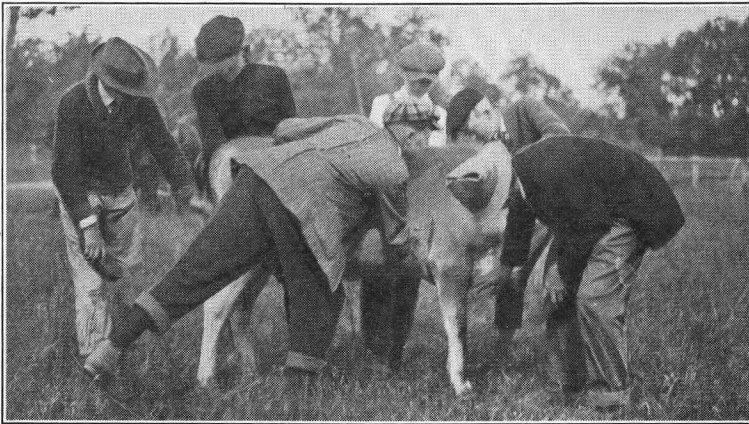
- (a) Best animal according to breed 75
- (b) Handling of animal in show ring 10
- (c) Completeness and accuracy of record book.....15

Possible score100

Division III.

- (a) Best animal 65
- (b) Handling of animals in show ring..... 10
- (c) Best kept milk record 10
- (d) Completeness and accuracy of record book..... 15

Possible score100



Lake Creek Calf Club of Linn county at work.

Division IV and V.

- (a) Best animal 65
- (b) Handling of animals in show ring10
- (c) Gain in weight and cost of gain 10
- (d) Completeness and accuracy of record book..... 15

Possible score100

Division VI.

- (a) Best cow and calf according to breed 65
- (b) Handling of animals in show ring..... 10
- (c) Gain in weight on calf and including keep
of cow 10
- (d) Completeness and accuracy of record book..... 15

Possible score100

8. **Dairy-Herd Record-Keeping Project.** Obtaining the milk, butter-fat, and feed records of at least two cows for a period of six months and the scoring of four dairy cows and two dairy barns.

Exhibit. Shall consist of all Club member's records.

Basis of Awards. The awards in all Dairy-Herd Record-Keeping Club contests will be based upon the following score:

(a) Barn milk-weight sheets complete	35	
(b) Scoring of four cows and two barns	35	
(c) Project report, which must contain information regarding the cows under test	30	
	<hr/>	
Possible score	100	

9. **Canning Project.** The canning of fruits and vegetables, at least 20 quarts of fruit, 10 quarts of vegetables, and 10 quarts of anything else.

Exhibit.

- 2 jars of fruit—two varieties.
- 2 jars of vegetables—two varieties.
- 2 jars of pickles or other products.

Basis of Awards.

(a) Exhibit—		
Canned fruit	25	
Canned vegetables	25	
Pickles or other products	25	75
(b) Report—		
Amount of work done	15	
Completeness and accuracy of report.....	10	25
	<hr/>	
Possible score	100	

10. **Homemaking Project.** The completion of ten lessons in homemaking, the making of an exhibit and final report.

Exhibits. The exhibit shall consist of two pieces of laundry (one piece of flat work, one piece of starched work), a household budget for one week, and one week's menu.

Basis of Awards.

(a) Exhibit—		
Two pieces of laundry	35	
A household budget	15	
A week's menu	25	75

(b) Report—	
Amount of work done	15
Completeness and accuracy of report	10
	<hr/> 25
Possible score	100

11. Sewing Project. Div. I. The completion of seven articles or garments in first-year sewing, the making of an exhibit and final report.

Div. II. The completion of five groups of articles and garments in second-year sewing, the making of an exhibit and final report. (This division is for those who have completed the required work of Division I, and have made their report, or who are taking domestic art under an instructor in high school.)

Div. III. The completion of six groups of articles and garments in third-year sewing, the making of an exhibit and final report. (This division is for those who have completed the required work of Division II, and have made their report, or who are taking domestic art under an instructor in high school.)

Exhibit. Div. I, II, and III. The exhibit shall consist of all of the articles and garments made in your division of the sewing project work.

Basis of Awards.

Division I.

(a) Exhibit	75
Judging will be on the following basis:	
One article from Group 1	10
One article from Group 2	10
Two articles from Group 3	20
Darning from Group 4	10
One garment from Group 5	15
Sample book from Group 6	10
(b) Completeness and accuracy of report	<hr/> 25
Possible score	100

Division II.

(a) Exhibit	75
One article from Group 1	20
Two kinds of repairing	5
Two articles from Group 3	20
One article from Group 4	20
Sample book from Group 5	10
(b) Completeness and accuracy of report	<hr/> 25
Possible score	100

Division III.

(a) Exhibit	75
Clothing budget	10
Two articles from Group 3	20
One dress (one or two piece) from Group 4.....	20
Two articles from Group 5	20
Sample book from Group 6	5
(b) Completeness and accuracy of report	25

Possible score100

12. Cookery. Div. I. Home cookery. The completion of ten groups in food preparation.



Gilbert Camp Cookery Club making doughboys at local fair, under direction of Mrs. F. E. Ferris, who has been local leader for eight consecutive years.

Div. II. Camp Cookery. The completion of ten groups in camp cookery.

Exhibit. Div. I. The exhibit shall consist of one loaf of bread.

Div. II. The exhibit shall consist of four biscuits made under camp conditions.

Basis of Awards.

(a) Exhibit—	
Bread or biscuits	75
(b) Report—	
Amount of work done	15
Completeness and accuracy of report	10
	25

Possible score100

13. Rabbit Raising Project. The care and management for a period of at least six months of one or more does, any age, together with the young rabbits.

Exhibit. Div. I. The exhibit shall consist of a senior doe nine months or over which has been cared for by a Club member.

Div. II. The exhibit shall consist of a junior doe under six months and a junior buck under six months of the Club member's own raising.



North Howell Cookery Club of Marion county which was the first in the state to complete the work 100 percent.

Basis of Awards.

Division I.

(a) Best senior doe	75
(b) Best profit on investment	15
(c) Completeness and accuracy of report	10

Possible score100

Division II.

(a) Best junior doe	45
(b) Best junior buck	45
(c) Completeness and accuracy of report	10

Possible score100

14. Home Beautification Project. Improving home conditions.

Exhibit. The exhibit shall consist of original drawing showing the plan of the home grounds before any improvements were made, one or more photographs of the grounds

before improvement; a drawing showing the revised plans for the improvements of the grounds; one or more photographs showing the improvements made during the contest period; and written descriptions and explanations of the work, drawings, and photographs.

Basis of Awards. The awards in all Home Beautification Club contests will be based upon the following score:

(a) Original drawings accompanied by written explanation and one or more photographs showing condition and appearance of premises at beginning of contest	10
(b) Drawing showing proposed plans accompanied by written explanation	40
(c) Extent to which proposed plans are carried out during year, to be shown by photographs, and written description	40
Points to be considered:	
Lawn	20
Trees and shrub planting	10
Flower and garden vegetable planting	10
(d) Written description and explanation of the work	10
Possible score.....	100

15. Goat Project. Milk Goats. Div. I. The care and management of one or more milk goats for a period of at least six months.

Div. II. The care and management of one or more milk-goat kids for a period of at least four months.

Exhibit. Div. I. The exhibit shall consist of the milk goat cared for by the Club member.

Div. II. The exhibit shall consist of the milk-goat kid cared for by the Club member.

Basis of Awards.

Division I.

(a) Best milk goat	75
(b) Handling of animal in show ring	10
(c) Greatest amount of milk produced	5
(d) Completeness and accuracy of report	10

Possible score100

Division II.

(a) Best milk-goat kid	75
(b) Handling of animal in show ring	10
(c) Completeness and accuracy of report	15

Possible score100

Angora Goats. Div. III. The care and management of one or more does and their kids, starting at least one month before kidding time and continuing to August 31.

Div. IV. The care and management of one or more yearlings for a period of at least six months. All bucks must be pure-bred.

Exhibit. Div. III. The exhibit shall consist of one or more kids that Club member owns and has cared for.

Div. IV. The exhibit shall consist of one or more yearlings that Club member owns and has cared for.

Basis of Awards.

Division III and IV.

(a) Best kid or yearling	75
(b) Handling of animal in show ring	15
(c) Completeness and accuracy of record book.....	10

Possible score100

16. Wheat Project. The growing of at least two acres of wheat.

Exhibit. An exhibit consisting of one peck of wheat grown and selected by Club member is required in all local, county, and state Club contests.

Basis of Awards.

(a) Exhibit	75
(b) Final project report	25
Best yield	10
Best profit on investment	10
Completeness and accuracy of report	5

Possible score100

17. Bee Project. The care and management of at least one colony of bees for a period of at least six months.

Exhibit. An exhibit consisting of one pound of comb honey and one pint of extracted honey, shall be required at all local, county, and state contests.

Basis of Awards.

(a) Exhibit	75
(b) Amount of work done.....	10
Best profit on investment.....	10
Completeness and accuracy of report.....	5

Possible score100

18. **Stock Judging Contest.** A team consisting of three members may be selected from any Standard Livestock Club and may compete in all county contests. The winning team from each county may compete at the State Fair for the State Championship.

19. **Canning Contest.** A team consisting of two members may be selected from any Standard Canning Club and may compete at all county canning contests. The winning team in each county may compete at the State Fair for the State Championship.



Mr. H. E. Cosby, Poultry Specialist, working with the judging team of Multnomah county.

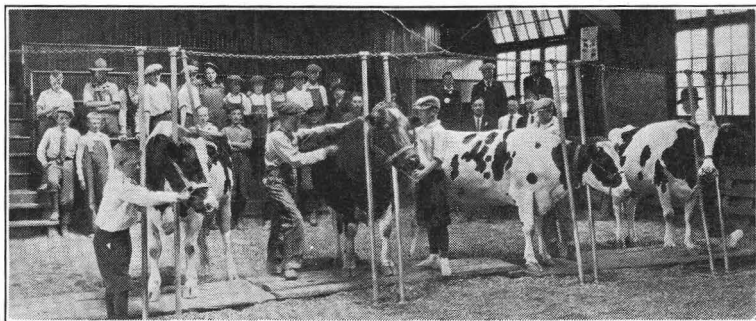
20. **Poultry Judging Contest.** A team consisting of three members may be selected from any Standard Poultry Club and may compete in any county contests. The winning team in each county may compete at the State Fair for the State Championship.

21. **Rabbit Judging Contest.** A team consisting of three members may be selected from any Standard Rabbit Club, and may compete in all county contests. The winning team in each county may compete at the State Fair for the State Championship.

22. Club members competing for the Union Pacific Railroad system scholarship must comply with the project requirements as follows: Corn, 5 acres; Potatoes, 5 acres; Wheat, 10 acres.

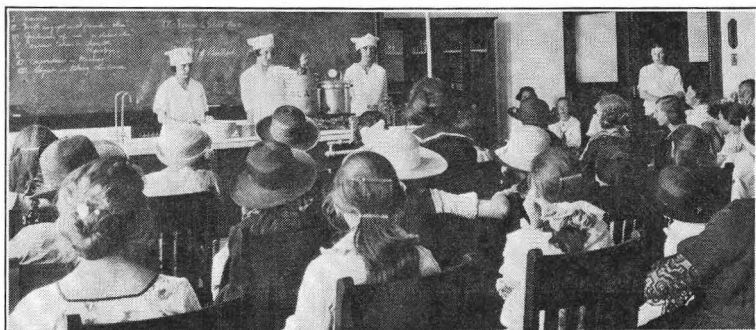
23. Demonstrations in all projects will be given during the county and state fairs by one or more Club members in each project.

24. **County Exhibits at State Fair.** Counties may make exhibits of Club work at the State Fair, competing for the



Stock judging at the Summer School of 1922.

state honors. Each county intending to make a Club exhibit at the State Fair, should apply for space by writing to J. E. Calavan, Field Worker, State Department of Education, Salem, Oregon.



Champion Canning team of Portland giving demonstration at 1922 Summer School.

Basis of awards will be found in the State Fair Premium List.

For special information pertaining to any phase of your Club project work address

H. C. SEYMOUR,
State Club Leader.

Extension Service, Oregon Agricultural College,
Corvallis, Oregon.

CLUB STAFF

College Staff—

H. C. Seymour, State Club Leader, Corvallis, Oregon.

Helen J. Cowgill, Assistant State Club Leader, Corvallis, Oregon.

L. J. Allen, Assistant State Club Leader, Corvallis, Ore.

State Department of Education Staff—

J. A. Churchill, State Superintendent of Public Instruction, Salem, Oregon.

W. M. Smith, Assistant State Superintendent of Public Instruction, Salem, Oregon.

J. E. Calavan, Field Worker, Salem, Oregon.

County Club Agents—

Clackamas county, Court House, Oregon City.

Douglas county, Roseburg, Oregon.

Jackson county, L. A. Moss, Medford, Oregon.

Klamath county, Frank W. Sexton, Farm Bureau Office, Klamath Falls, Oregon.

Malheur county, W. D. Kinder, Farm Bureau Office, Vale, Oregon.

Multnomah county, Miss Ethel I. Calkins, Gresham, Ore.

Tillamook county, D. H. Kennedy, Court House, Tillamook, Oregon.

City of Portland, T. D. Kirkpatrick, Court House, Portland, Oregon.