

DAIRY GOAT BREEDS

1. AMERICAN LA MANCHA

Original animals came from Spain through Mexico. Mrs. Frye of Glide, Oregon through selective cross breeding retained the short gopher ears. They have all the colors in the other breeds and also many of the same characteristics.

2. FRENCH ALPINE

The French Alpine is a French breed. The colors vary from white, gray, brown, black, to red, and show shadings and combinations of these colors on the same animal. Its outline is angular. Like the Toggenburg, it produces rich milk in quantity. The average doe should weigh not less than 125 pounds.

3. SAANEN

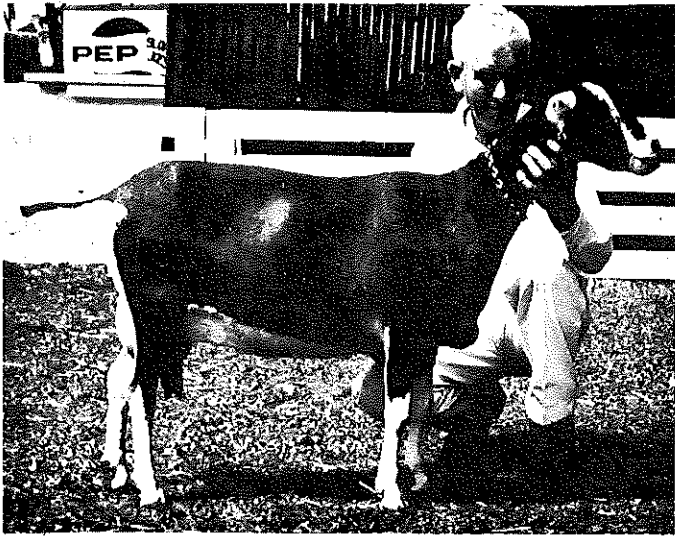
The Saanen is a white or slightly cream colored goat of Swiss origin. It produces the greatest quantity of milk. The mature doe weighs about 135 pounds and up.

4. TOGGENBURG

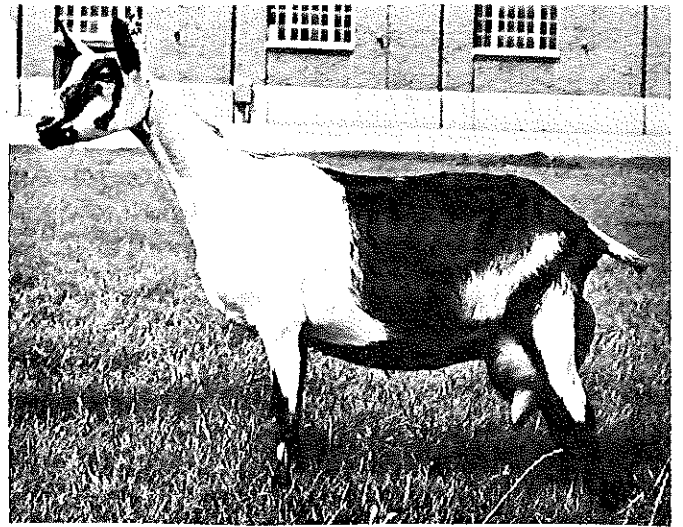
The Toggenburg is a Swiss breed. It is brown with a light stripe down each side of the face. The legs are white below the knees and there is a white triangle on either side of the tail. The Toggenburg, referred to as the "Guernsey" of the goat family, produces rich milk in quantity. The size of the mature doe is 115 to 150 pounds.

5. NUBIAN

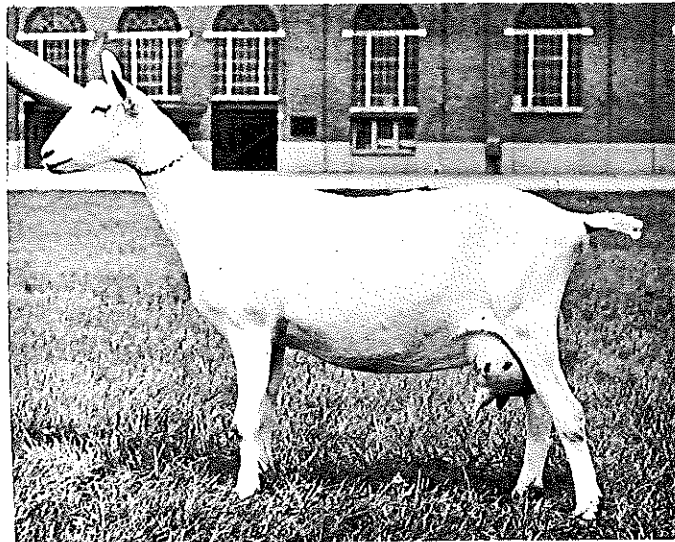
The Nubian is of African origin, and is characterized by a short, sleek coat, long drooping ears, and a Roman nose. Colors range from red to tan or black, with or without white. The Nubian breed is one of the best for high butterfat milk production. The average mature doe weighs 130 pounds and up.



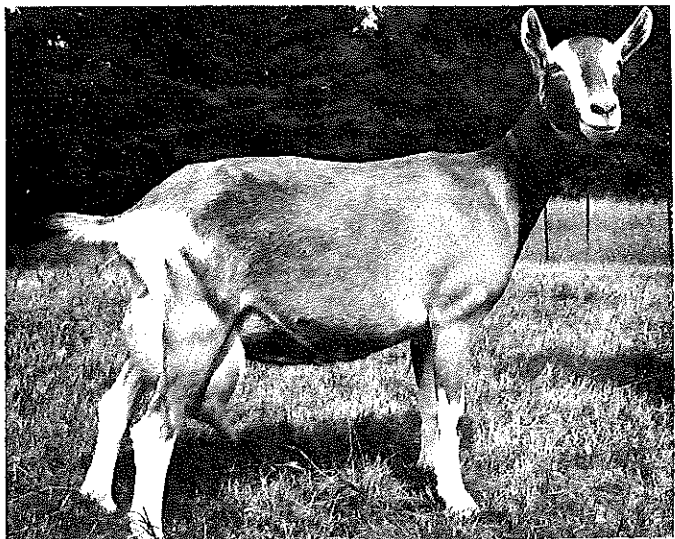
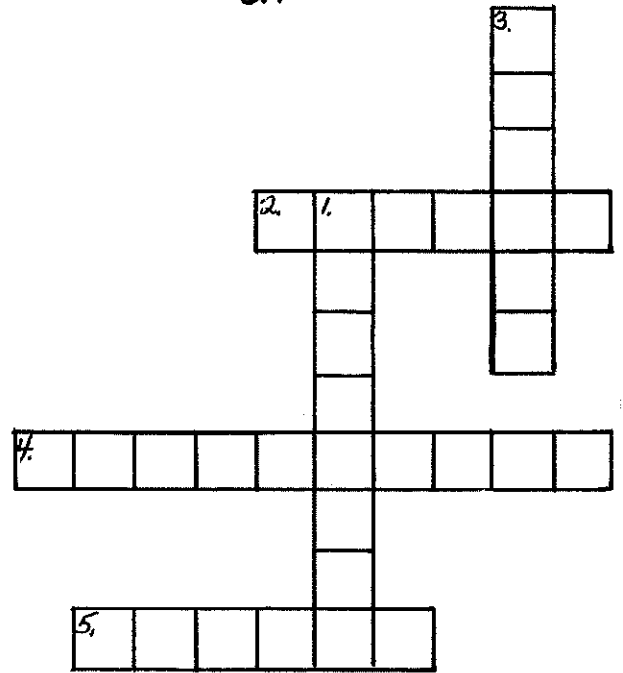
1.



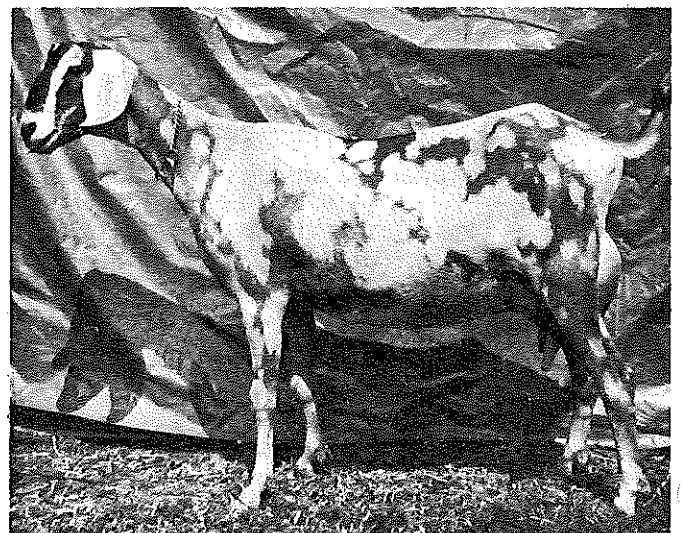
2.



3.



4.



5.