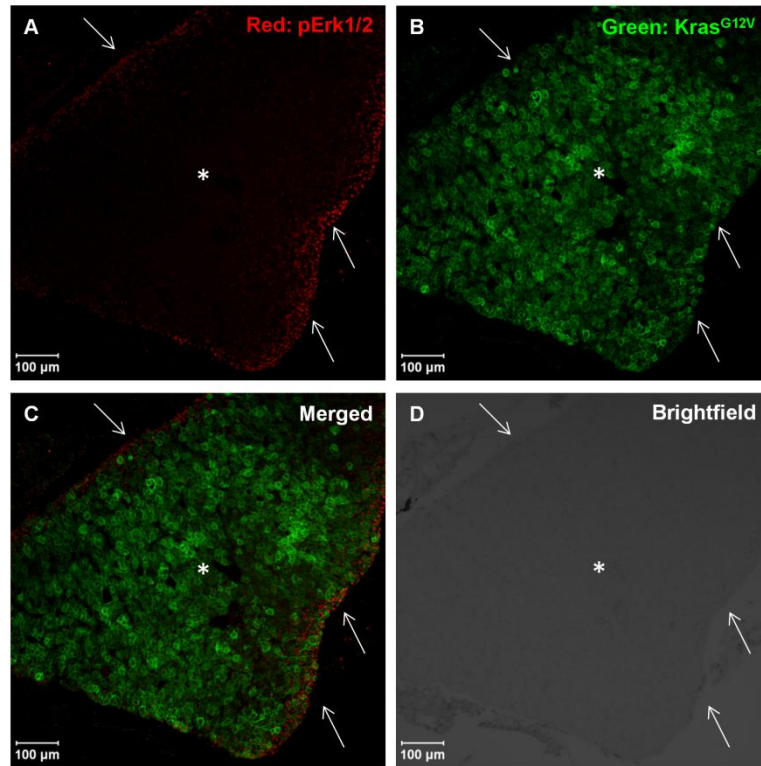


Supplementary figure 1



**Figure S1: Spatial activation of Ras/MAPK pathway in the oncogenic Kras-mediated HCC.**

Immunofluorescence staining was carried out on Bouin's fixed paraffin section. The periphery and the centre of the liver was indicated by the white arrows and asterisk, respectively. (A) Cells were stained with anti-phospho-Erk1/2 antibody. (B) Liver cells expressing EGFP-Kras<sup>G12V</sup> were stained green with anti-EGFP antibody. (C) Merged image of (A) and (B). (D) Brightfield image of the paraffin section. Erk activation (phosphorylation) was more intense at the periphery of the liver compared to its centre as illustrated by the stronger p-Erk staining, while the expression of oncogenic Kras remained rather constant throughout the tissue. Scale bar: 100μm.