

05  
E55  
D. 390  
ev. 1978  
pp. 2

COMPACT



# Planning Officials in Oregon

A Directory

Oregon State University Extension Service  
Special Report 390  
Third Edition  
October 1978

# EXTENSION COMMUNITY RESOURCE DEVELOPMENT AGENTS

## BAKER

Peter Markgraf  
2610 Grove Street  
Baker, Oregon 97814

## BENTON

Harold Werth  
Post Office Building  
P.O. Box "B"  
Corvallis, Oregon 97330

## CLACKAMAS

Clayton Wills  
256 Warner-Milne Road  
Oregon City, Oregon 97045

## CLATSOP

Jim Bergeron  
Post Office Building  
P.O. Box 207  
Astoria, Oregon 97103

## COLUMBIA

Carol Ashley  
Courthouse  
St. Helens, Oregon 97051

## COOS

Arthur P. Poole  
Courthouse  
Coquille, Oregon 97423

## CROOK

Thomas Bunch  
Courthouse  
Prineville, Oregon 97754

## CURRY

Walter Schroeder  
Curry County Office Building  
P.O. Box 488  
Gold Beach, Oregon 97444

## DESCHUTES

Marvin Young  
922 West Highland  
P.O. Box 756  
Redmond, Oregon 97756

## DOUGLAS

Eugene P. Winters  
1134 SE Douglas Avenue  
P.O. Box 1165  
Roseburg, Oregon 97470

## GILLIAM

Martin Zimmerman  
Courthouse  
P.O. Box 707  
Condon, Oregon 97823

## GRANT

Wm. K. Farrell  
Courthouse  
Canyon City, Oregon 97820

## HARNEY

Paul Friedrichsen  
Courthouse  
450 North Buena Vista  
Burns, Oregon 97720

## HOOD RIVER

David Burkhart  
Courthouse  
P.O. Box 499  
Hood River, Oregon 97031

## JACKSON

Arleigh Isley  
1301 Maple Grove Drive  
Medford, Oregon 97051

## JEFFERSON

Ronald T. Mobley  
530 D Street  
Madras, Oregon 97741

Clinton Jacks  
Tribal Office Building  
Warm Springs Indian Res.  
P.O. Box 428  
Warm Springs, Oregon 97761

## JOSEPHINE

George Tiger  
215 Ringuette Street  
Grants Pass, Oregon 97526

## KLAMATH

Rodney M. Todd  
Post Office Building  
P.O. Box 255  
Klamath Falls, Oregon 97601

## LAKE

Paul McCormick  
Courthouse  
Lakeview, Oregon 97630

## LANE

Duane Hatch  
950 W. 13th Street  
Eugene, Oregon 97402

## LINCOLN

John W. Fitzpatrick  
Courthouse  
225 W. Olive Street  
Newport, Oregon 97365

## LINN

Jack Wood  
4th & Lyons  
P.O. Box 765  
Albany, Oregon 97321

## MALHEUR

Gary Schneider  
710 SW 5th Avenue  
Ontario, Oregon 97914

## MARION

Gregory Tillson  
3180 Center Street, NE, Rm. 160  
Salem, Oregon 97301

## MORROW

Harold Kerr  
Gilliam & Bisbee Building  
P.O. Box 397  
Heppner, Oregon 97836

## MULTNOMAH

Harold M. Black  
Rm. 253, DCE Building  
P.O. Box 1261  
Portland, Oregon 97207

## POLK

Lois Watkinson  
316 Main Street  
Dallas, Oregon 97338

## SHERMAN

Courthouse  
P.O. Box 385  
Moro, Oregon 97039

## TILLAMOOK

Raymond Yost  
Courthouse  
Tillamook, Oregon 97141

## UMATILLA

Gerald Brog  
Courthouse  
P.O. Box 1107  
Pendleton, Oregon 97801

## UNION

Ralph D. Hart  
4th & Adams Street  
P.O. Box 760  
LaGrande, Oregon 97850

## WALLOWA

Robert H. Salzer  
Courthouse, PO Box 280  
Enterprise, Oregon 97828

## WASCO

Thomas Zinn  
Courthouse Annex  
P.O. Box 821  
The Dalles, Oregon 97058

## WASHINGTON

Richard Beck  
Courthouse  
Hillsboro, Oregon 97123

## WHEELER

Kenneth Killingsworth  
Courthouse, P.O. Box 407  
Fossil, Oregon 97830

## YAMHILL

W. Wayne Roberts  
Courthouse  
McMinnville, Oregon 97128

S  
105  
E55  
no. 390  
rev. 1978  
cop. 2

PLANNING OFFICIALS IN OREGON  
A DIRECTORY

OREGON STATE UNIVERSITY EXTENSION SERVICE  
SPECIAL REPORT 390  
THIRD EDITION  
OCTOBER 1978

---

AN EXTENSION *Consumer Service* PUBLICATION  
OREGON STATE UNIVERSITY, CORVALLIS

---

## CONTENTS

COUNTY PLANNING DEPARTMENTS . . . . .	1
CITY PLANNING DEPARTMENTS . . . . .	19
LAND CONSERVATION AND DEVELOPMENT COMMISSION . . . . .	109
DEPARTMENT OF LAND CONSERVATION AND DEVELOPMENT . . . . .	111
STATE ADMINISTRATIVE DISTRICTS (COUNCILS OF GOVERNMENT) . . . . .	112
PROFESSIONAL ASSOCIATIONS . . . . .	115
OTHER DIRECTORIES . . . . .	116

## INTRODUCTION

This directory is compiled as part of the Land Resource Management Program of the Oregon State University Extension Service. It is an update of earlier directories put out by Extension. The primary function of the directory is to provide a list of planning commission chairmen, citizen involvement committee chairmen, and planning directors for Oregon counties and cities. A list of COG's is also provided. Also, a list of county Extension agents involved in land use and community development is included on the inside front cover.

In addition, the directory contains information for each jurisdiction on population, number of planning commissioners, number of planning staff, and dates of adoption of comprehensive plan, zoning ordinance, and subdivision ordinance. A date is also given for when the jurisdiction expects to be in compliance with statewide goals.

The information for the directory was obtained from questionnaires to each jurisdiction in Oregon. Some cities did not reply so that no entry is made. If parts of the questionnaire were not completed, those sections were left out in this report. Each city listing indicates the county in which the city is located.

This directory was compiled by James R. Pease, Land Resource Management Specialist. Please send notices of any changes in personnel or addresses to the Land Resource Management Specialist, Geography Department, Oregon State University, Corvallis, Oregon 97331.

## BAKER COUNTY

Population: 16,050

Planning Department  
County Courthouse  
Baker, Oregon 97814  
523-6414, Ext. 228

# on planning commission - 7  
# on planning staff - 1

William W. Quigley, Planning Director and Local Planning Coordinator

Leland Meyers, Citizen Involvement Committee Chairman

Alvin Ward, Planning Commission Chairman

Zoning Ordinance adopted 2/1/74

Subdivision Ordinance adopted 2/1/74

Expect to be in compliance with LCDC goals 12/79

## BENTON COUNTY

Population 67,400

Planning Department  
180 NW 5th Street  
Corvallis, Oregon 97330  
757-6819

# on planning commission - 9  
# on planning staff - 5

Al Couper, Planning Director

Gary Crowson, Zoning Administrator

Jean Nath, Planning Commission Chairman

Marvin Gloege, Local Planning Coordinator

Comprehensive Plan adopted 1974

Zoning Ordinance adopted 1974

Subdivision Ordinance adopted 1974

Expect to be in compliance with LCDC goals 12/79

## CLACKAMAS COUNTY

Population: 211,000

Planning Department  
940 Warner Milne Road  
Oregon City, Oregon 97045  
655-8491

# on planning commission - 9  
# on planning staff - 41 total  
22 professional

David R. Seigneur, Planning Director  
Ronald Stangel, Zoning Administrator  
Mona Hoffman, Citizen Involvement Committee Chairman  
Richard Ares, Planning Commission Chairman  
John McIntyre, Local Planning Coordinator

Comprehensive plan adopted 8/8/74  
Zoning Ordinance adopted 5/17/60  
Subdivision Ordinance adopted 10/29/74  
Expect to be in compliance with LCDC goals 1980

## CLATSOP COUNTY

Population: 29,800

Department of Planning & Development  
PO Box 179  
Astoria, Oregon 97103  
325-7441, Ext. 71 or 738-8381, Ext. 71

# on planning commission - 7  
# on planning staff - 7

Curt Schneider, Planning Director  
Patricia Kubala, Zoning Administrator  
Dave Pratt, Chairman of Planning Commission  
Rainmar Bartl, Local Planning Coordinator

Comprehensive Plan adopted 1969  
Zoning Ordinance adopted 1966 (major revision 1976)  
Subdivision Ordinance adopted 1969  
Expect to be in compliance with LCDC goals 7/1/79

## COLUMBIA COUNTY

Population: 34,200

Planning Department  
Courthouse  
St. Helens, Oregon 97051  
397-1501

# on planning commission - 9  
# on planning staff - 2

Don Leadroot, Planning Director and Local Planning Coordinator

Robert Irwin, Zoning Administrator

John Scott, Citizen Involvement Committee Chairman and Planning Commission Chairman

Comprehensive Plan adopted 1973

Zoning Ordinance adopted 8/74

Expect to be in compliance with LCDC goals 6/79

## COOS COUNTY

Population: 60,000

Planning Department  
Room 102, Courthouse  
Coquille, Oregon 97423  
396-3121, Ext. 252

# on planning commission - 9  
# on planning staff - 6

David M. Richey, Planning Director and Local Planning Coordinator

William B. Meithaf, Zoning Administrator

Bill Lansing, Planning Commission Chairman

Zoning Ordinance adopted 7/75

Subdivision Ordinance adopted 5/74

Expect to be in compliance with LCDC goals 7/78



## CROOK COUNTY

Population: 12,100

City-County Planning Department  
Crook County Courthouse  
Prineville, Oregon 97754  
447-3211

# on planning commission - 7  
# on planning staff - 5

Dick Brown, Planning Director

Crysti Shoji, Assistant Director and Local Planning Coordinator

John Gervias, Citizen Involvement Committee Chairman

Martin Howard, Planning Commission Chairman

Comprehensive Plan adopted 6/73, expected revision 6/78

Zoning Ordinance adopted 6/73, expected revision 6/78

Subdivision Ordinance adopted 12/73, expected revision 6/78

Expect to be in compliance with LCDC goals 7/78

## CURRY COUNTY

Population: 14,300

Planning Department  
E. Moore Street  
P.O. Box 1123  
Gold Beach, Oregon 97444  
247-7011, Ext. 227

# on planning commission - 9  
# on planning staff - 4

Robert J. Higbie, Planning Director, Zoning Administrator, and Local Planning Coordinator

Joe Conta, Citizen Involvement Committee Chairman

Joe Genre, Planning Commission Chairman

Comprehensive Plan adopted 7-15-71

Zoning Ordinance adopted 7-2-72

Subdivision Ordinance adopted 8-8-74

Expect to be in compliance with LCDC goals 6-30-79

## DESCHUTES COUNTY

Population: 68,000

Planning Department  
Courthouse Annex, Room 102  
Bend, Oregon 97701  
382-4000, Ext. 75

# on planning commission - 9  
# on planning staff - 11

William G. Monroe, Planning Director, Zoning Administrator, Local Planning Coordinator, and Citizen Involvement Committee Chairman

John Partin, Planning Commission Chairman

Comprehensive Plan adopted 1/70

Zoning Ordinance adopted 12/71

Subdivision Ordinance adopted 9/71

Expect to be in compliance with LCDC goals 5/79

## DOUGLAS COUNTY

Population: 83,700

Planning Department  
205 SE Jackson  
Roseburg, Oregon 97470  
672-3311, Ext. 289

# on planning commission - 7  
# on planning staff - 14

Keith L. Cubic, Planning Director

James A. Mann, Administrative Supervisor, Zoning, Subdivision

Dave Passon, Citizen Involvement Committee Chairman

Ron Brandt, Planning Commission Chairman

Frank Nielsen, Local Planning Coordinator

Comprehensive Plan (interim) adopted 1972

Zoning Ordinance adopted 1960 (periodic update)

Subdivision Ordinance adopted 1955 (periodic update)

Expect to be in compliance with LCDC goals 1985

## GILLIAM COUNTY

Population: 2,200

Planning Department  
Gilliam County Courthouse  
P.O. Box 427  
Condon, Oregon 97823  
384-4243

# on planning commission - 7  
# on planning staff - 1

Marlene Davison, Planning Director and Zoning Administrator

George Jamieson, Planning Commission Chairman and Citizen Involvement Committee Chairman

Marlene Davison, Local Planning Coordinator

Comprehensive Plan adopted 5-3-77

Zoning Ordinance adopted 5-3-77

Subdivision Ordinance 5-3-77

In compliance with LCDC goals

## GRANT COUNTY

Population: 7,500

Planning Commission  
P.O. Box 214  
Courthouse  
Canyon City, Oregon 97820  
575-1519

# on planning commission - 9  
# on planning staff - 1

Douglas Barks, Planning Director, Zoning Administrator, and Local Planning Coordinator

Jerry Franklin, Citizen Involvement Committee Chairman and Planning Commission Chairman

Comprehensive Plan adopted 12/69

Zoning Ordinance adopted 8/75

Subdivision Ordinance adopted 8/23/71

Expect to be in compliance with LCDC goals 6/30/79

## HARNEY COUNTY

Population: 7,700

Planning Department  
P.O. Box 1147  
Burns, Oregon 97720  
573-6456

# on planning commission - 7  
# on planning staff - 0

Art Heerwagon, Planning Commission Chairman and Citizen Involvement  
Committee Chairman

Rod Stubbs, Stubbs and Associates, Salem, Planning Consultant

Comprehensive Plan adopted 10/25/72

Zoning Ordinance adopted 10/20/71

Subdivision Ordinance adopted 6/14/72

Expect to be in compliance with LCDC goals fall 1978

## HOOD RIVER COUNTY

Population: 14,600

Planning Department  
County Courthouse  
Hood River, Oregon 97031  
386-1306

# on planning commission - 7  
# on planning staff - 3

Bill Adams, Planning Director and Zoning Administrator

Mike Oates, Citizen Involvement Committee Chairman and Planning  
Commission Chairman

Gary Gidley, Local Planning Coordinator

Comprehensive Plan adopted 1973

Zoning Ordinance adopted 1966

Subdivision Ordinance adopted 1974

Expect to be in compliance with LCDC goals 7/80

## JACKSON COUNTY

Population: 118,500

Planning Department  
32 West Sixth Street  
Medford, Oregon 97501  
776-7554

# on planning commission - 7  
# on planning staff - 11  
# on hearings council - 5

Robert Britzman, Planning Director

Paul Nelson, Zoning Administrator

Helen Thomas, Citizen Involvement Committee Chairman

Maynard Smith, Planning Commission Chairman

Billie Dickerson, Chairman of Hearings Council

James Capp, Local Planning Coordinator

Comprehensive Plan adopted 6/72

Zoning Ordinance adopted 4/73

Subdivision Ordinance adopted 5/69, amended 7/72 and 9/75

Expect to be in compliance with LCDC goals 4/79

## JEFFERSON COUNTY

Population: 10,100

Planning Department  
County Courthouse  
Madras, Oregon 97741  
475-3147

# on planning commission - 7  
# on planning staff - 1

Bryan Christian, Planning Director, Zoning Administrator, and Local Planning Coordinator

Ted Freeman, Citizen Involvement Committee Chairman and Planning Commission Chairman

Comprehensive Plan adopted 1973

Zoning Ordinance adopted 1973

Subdivision Ordinance adopted 1974

Expect to be in compliance with LCDC goals 1979

## JOSEPHINE COUNTY

Population: 53,000

Planning Department  
County Courthouse  
Grants Pass, Oregon 97526  
476-8881, Ext. 245

# on planning commission - 9  
# on planning staff - 8  
# on zoning commission - 7

Ronald T. Bailey, Planning Director and Local Planning Coordinator

Wray A. Maxwell, Zoning Administrator

John Whiteside, Citizen Involvement Committee Chairman

DeWayne Dahl, Planning Commission Chairman

Berniece Row, Zoning Commission Chairman

Comprehensive Plan adopted 4/27/71

Zoning Ordinance adopted 1972 and 1973

Subdivision Ordinance adopted 1958 (updated ordinance nearing adoption)

Expect to be in compliance with LCDC goals 9/79

## KLAMATH COUNTY

Population: 56,000

Planning Department  
County Courthouse  
Klamath Falls, Oregon 97601  
882-2501, Ext. 285

# on planning commission - 9  
# on planning staff - 10

Jim Brockett, Planning Director

Carl Shuck, Zoning Administrator

Margaret Wilder, Citizen Involvement Committee Chairman

Wayne Fahsholtz, Planning Commission Chairman

Comprehensive Plan adopted 8/1/72

Zoning Ordinance adopted 12/7/72

Subdivision Ordinance adopted 10/8/69

Expect to be in compliance with LCDC goals 1980

## LINCOLN COUNTY

Population: 28,915

Planning Department  
County Courthouse  
225 West Olive Street  
Newport, Oregon 97365  
265-5341, Ext. 229

# on planning commission - 9  
# on planning staff - 9

Oscar Granger, Planning Director

Richard Stolte, Zoning Administrator

Cathy Fitzpatrick, Citizen Involvement Committee Chairman

Bill Herder, Planning Commission Chairman

Randy Martin, Local Planning Coordinator

Comprehensive Plan adopted 12/69

Zoning Ordinance adopted 3/74

Subdivision Ordinance adopted 3/75

Expect to be in compliance with LCDC goals 6/80

## LINN COUNTY

Population: 85,000

Planning Department  
P.O. Box 100  
Albany, Oregon 97321  
967-3816

# on planning commission - 9  
# on planning staff - 9

David E. Schmidt, Planning Director

Jeffrey R. Tross, Zoning Administrator

William Kelly, Citizen Involvement Committee Chairman

Richard Manion, Planning Commission Chairman

Marvin Gloege, Local Planning Coordinator

Comprehensive Plan adopted 1972

Zoning Ordinance adopted 1972

Subdivision Ordinance adopted 1968

Expect to be in compliance with LCDC goals 7/1/80

## LAKE COUNTY

Population: 6,620

Planning Department  
County Courthouse  
Lakeview, Oregon 97630  
947-4494

# on planning commission - 9  
# on planning staff - 1

Janine Cannon, Planning Director, Zoning Administrator, and Local  
Planning Coordinator

Breda Flynn, Planning Commission Chairman

Zoning Ordinance adopted 2/71

Subdivision Ordinance adopted 2/71

Comprehensive Plan - in process

Expect to be in compliance with LCDC goals 7/80

## LANE COUNTY

Population: 252,500

Planning Department  
125 E. 8th  
Eugene, Oregon 97401  
687-4186

# on planning commission - 7  
# on planning staff - 15

Lee Miller, Planning Director

Vern Delk, Zoning Administrator

Patti Clement, Citizen Involvement Committee Chairman

Kermit Scott, Chairman of Lane County Planning Commission

Al Wysong, Chairman of West Lane Planning Commission

Gary Darnielle, Local Planning Coordinator (Lane COG)

Comprehensive Plan adopted 1960 (first unit)

Zoning Ordinance adopted 1949

Subdivision Ordinance adopted 1949

Expect to be in compliance with LCDC goals 7/80



## MALHEUR COUNTY

Population: 24,000

Planning Department  
P.O. Box 130  
Vale, Oregon 97918  
473-3913

# on planning commission - 9  
# on planning staff - 4

John D. Beal, Planning Director, Zoning Administrator, Citizen Involvement Committee Chairman, and Local Planning Coordinator

Ted Avery, Planning Commission Chairman

Comprehensive Plan adopted 1973

Zoning Ordinance adopted 8/17/73

Subdivision Ordinance adopted 1965

Expect to be in compliance with LCDC goals 12/78

## MARION COUNTY

Population: 177,700

Planning Department  
220 High Street, NE  
Salem, Oregon 97301  
588-5038

# on planning commission - 9  
# on planning staff - 5

Randy Curtis, Planning Director

Richard Schmidt, Planning Commission Chairman

Ric Wilson, Local Planning Coordinator

Comprehensive Plan adopted 12/26/72

Zoning Ordinance adopted 11/13/70

Subdivision Ordinance adopted 8/28/74

Expect to be in compliance with LCDC goals 7/80

## MORROW COUNTY

Population: 5,390

Planning Department  
County Courthouse  
P.O. Box 541  
Heppner, Oregon 97836  
676-5030

# on planning commission - 9  
# on planning staff - 3

David R. Moon, Planning Director

Elizabeth Ernst, Zoning Administrator

Doris Graves, Citizen Involvement Committee Chairman and Planning Commission Chairman

Jeri Cohen, E.C.O.A.C., Local Planning Coordinator

Comprehensive Plan adopted 1971

Zoning Ordinance adopted 1972

Subdivision Ordinance adopted 1972

Expect to be in compliance with LCDC goals 3/80

## MULTNOMAH COUNTY

Population: 556,400

Planning Department  
2115 SE Morrison  
Portland, Oregon 97214  
248-5259

# on planning commission - 9  
# on planning staff - 11

Martin R. Cramton, Jr., Planning Director

Paul DeBonny, Zoning Administrator

Gladys Pasel, Citizen Involvement Committee Chairman

Gerald Brewster, Planning Commission Chairman

Linda Macpherson, Local Planning Coordinator

Comprehensive Plan adopted 9/77

Zoning Ordinance adopted 4/19/55

Subdivision Ordinance adopted 1956

Expect to be in compliance with LCDC goals 12/78

## POLK COUNTY

Population: 42,000

Planning Department  
County Courthouse, Room 203  
Dallas, Oregon 97308  
623-8171, Ext. 60

# on planning commission 7  
and 5 (two commissions)  
# on planning staff - 8

E. Frank Wyckoff, Planning Director

Mitch Rohse, Zoning Administrator

Nola Millhouser, Citizen Involvement Committee Chairman

Randy Smith, Planning Commission Chairman

Lowell Ford, Planning Commission Chairman (two commissions)

Wayne Klem, Local Planning Coordinator

Comprehensive Plan adopted 12/75

Zoning Ordinance adopted 11/70

Subdivision Ordinance adopted 5/74

Expect to be in compliance with LCDC goals 9/78

## SHERMAN COUNTY

Population: 2,139

Planning Department  
P.O. Box 385  
Moro, Oregon 97039  
565-3230

# on planning commission - 5  
# on planning staff - 1

Gary Shaff, Planning Director and Local Planning Coordinator

Gerald Lohrey/Sherman County Planning Commission/Harold Owens, Zoning Administrator

Don Thompson, Chairman of Planning Commission

Comprehensive Plan adopted 1968

Zoning Ordinance adopted 1968

Subdivision Ordinance adopted 1976

Expect to be in compliance with LCDC goals 1/1/79

## TILLAMOOK COUNTY

Population: 18,600

Planning Department  
County Courthouse, Room 7  
Tillamook, Oregon 97141  
842-5511, Ext. 315

# on planning commission - 9  
# on planning staff - 11

Steve Goeckritz, Planning Director  
Jim Hendryx, Zoning Administrator  
Larry Shadbolt, Citizen Involvement Committee Chairman  
Dave Heckeroth, Planning Commission Chairman  
Rainmar Bartl, Local Planning Coordinator

Comprehensive Plan adopted 3/22/72  
Zoning Ordinance adopted 4/21/69  
Subdivision Ordinance adopted 9/1/66  
Expect to be in compliance with LCDC goals 6/79

## UMATILLA COUNTY

Population: 50,000

Planning Department  
County Courthouse  
P.O. Box 1427  
Pendleton, Oregon 97801  
276-7111, Ext. 314

# on planning commission - 9  
# on planning staff - 6

Dennis Olson, Planning Director  
Charles Davis, Zoning Administrator  
Margaret Troedson, Planning Commission Chairman  
Jeri Cohen, Local Planning Coordinator

Comprehensive Plan adopted 4/72  
Zoning Ordinance adopted 7/72  
Subdivision Ordinance adopted 2/70  
Expect to be in compliance with LCDC goals 12/79

## UNION COUNTY

Population: 22,600

Planning Department  
County Courthouse  
LaGrande, Oregon 97850  
963-9331

# on planning commission - 9  
# on planning staff - 0

Joan L. Lenker, Planning Director, Zoning Administrator, and Local Planning Coordinator

Peggy Young, Citizen Involvement Committee Chairman and Planning Commission Chairman

Zoning Ordinance revised 1973

Subdivision ordinance revised 1977

Expect to be in compliance with LCDC goals 7/1/78

## WALLOWA COUNTY

Population: 6,800

Planning Department  
County Courthouse  
Enterprise, Oregon 97828  
426-3048

# on planning commission - 9  
# on planning staff - 1

Tom Cutter, Planning Director, Zoning Administrator, and Local Planning Coordinator

Morris Pratt, Citizen Involvement Committee Chairman and Planning Commission Chairman

Comprehensive Plan adopted 6/77

Zoning Ordinance adopted 4/71, update 7/77

Subdivision Ordinance adopted 5/72, update 8/77

Expect to be in compliance with LCDC goals 6/78

## WASCO COUNTY

Population: 21,000

Planning Department  
401 West 4th Street  
The Dalles, Oregon 97058  
298-5169

# on planning commission - 7  
# on planning staff - 4

Roy R. Huberd, Planning Director  
Dorothy Soderstrom, Zoning Administrator  
Paul Kortge, Planning Commission Chairman  
Jeff VanHoy, Local Planning Coordinator

Zoning Ordinance adopted 11/69  
Subdivision Ordinance adopted 5/74  
Comprehensive Plan in draft form  
Expect to be in compliance with LCDC goals 7/79

## WASHINGTON COUNTY

Population: 200,500

Planning Department  
150 N. First  
Hillsboro, Oregon 97123  
648-8761

# on planning commission - 9  
# on planning staff - 22

Larry K. Frazier, Planning Director  
Rex McDaniel, Zoning Administrator  
Arthur J. Schlack, Planning Administrator  
Jerry Willard, Citizen Involvement Committee Chairman  
Donald Burns, Planning Commission Chairman  
Jeff Gibbs, Local Planning Coordinator

Comprehensive Plan adopted 11/73, revised 1/77  
Zoning Ordinance adopted 7/75  
Subdivision ordinance adopted 7/64  
Expect to be in compliance with LCDC goals 6/79

## WHEELER COUNTY

Population: 2,030

Planning Department  
P.O. Box 347  
Fossil, Oregon 97830  
763-2911

# on planning commission - 9  
# on planning staff - 0

John Misener, Planning Commission Chairman

Bea Donnelly, Local Planning Coordinator

Comprehensive Plan adopted 1969

Zoning Ordinance adopted 1970, revised 2/6/74

Subdivision Ordinance adopted 2/6/74

Expect to be in compliance with LCDC goals 1979

## YAMHILL COUNTY

Population: 47,200

Planning Department  
County Courthouse  
Room 17  
McMinnville, Oregon 97128  
472-9371, Ext. 229

# on planning commission - 9  
# on planning staff - 6

David Bishop, Planning Director

John Emison, Zoning Administrator

Ivan Dent, Citizen Involvement Committee Chairman

Charles Heckman, Planning Commission Chairman

Greg W. Wolf, Local Planning Coordinator

Comprehensive Plan adopted 1974

Zoning Ordinance adopted 1976

Subdivision Ordinance adopted 1959, amended 1968 (in process of revision)

Expect to be in compliance with LCDC goals 12/1/78

ADRIAN

Population: 170

Malheur County

Planning accomplished by City Council

Leroy H. Remington, Citizen Involvement Committee Chairman

Comprehensive Plan: anticipate adoption June 29, 1978

Zoning Ordinance: public hearings in progress

Subdivision Ordinance: pending

Expect to be in compliance with LCDC goals 12/78

ALBANY

Population: 24,000

Linn County

Planning Department

127 Broadalbin S.W.

P.O. Box 490

Albany, Oregon 97321

967-4318

# on planning commission - 9

# on planning staff - 5

Steve Bryant, Planning Director

Jerry Maddy and Doug Clark, Co-chairpersons of Citizen Involvement Committee

Henry Hurlbut, Planning Commission Chairman

Comprehensive Plan adopted 6/71

Zoning Ordinance adopted 10/77

Subdivision Ordinance adopted 9/68

Expect to be in compliance with LCDC goals 6/80



## AMITY

Population: 1,053

Yamhill County

Planning Department  
P.O. Box 126  
Amity, Oregon 97101  
835-3711

# on planning Commission - 7

Yamhill County Planning Staff serve as Planning Director  
Wayne Smith, Planning Commission Chairman

Zoning Ordinance adopted 3/75  
Subdivision Ordinance adopted 1/76  
In compliance with LCDC goals

## ARLINGTON

Population: 580

Gilliam County

Planning Department  
City Hall  
P.O. Box 68  
Arlington, Oregon 97812  
454-2743

# on planning commission - 7  
# on planning staff - 0

Caroline Wacken, Citizen Involvement Committee Chairman  
Rodney Linnell, Planning Commission Chairman

Comprehensive Plan adopted 3-8-78  
Zoning Ordinance adopted 1-13-60  
Subdivision Ordinance adopted 6-4-75  
In compliance with LCDC goals

## ASHLAND

Population: 15,123

Jackson County

Planning Department  
Ashland City Hall  
Ashland, Oregon 97520  
482-3211, Ext. 47

# on planning commission - 9  
# on planning staff - 2

Richard C. Box, Planning Director  
Greg Winterowd, Zoning Administrator  
Lois Wenker, Planning Commission Chairman

Comprehensive Plan adopted 1969  
Zoning Ordinance adopted 1964  
Subdivision Ordinance adopted 1962  
Expect to be in compliance with LCDC goals 10/78

## ASTORIA

Population: 10,740

Clatsop County

Planning Department  
1095 Duane Street  
P.O. Box 300  
Astoria, Oregon 97103  
325-5821

# on planning commission - 7  
# on planning staff - 1 1/2

Jean H. Hallaux, Planning Director and Zoning Administrator  
George Potter, Citizen Involvement Committee Chairman  
Ted Blair, Planning Commission Chairman

Comprehensive Plan adopted 6/68  
Zoning Ordinance adopted 12/12/71  
Subdivision Ordinance adopted 12/2/74  
Expect to be in compliance with LCDC goals 1/80

## AUMSVILLE

Population: 1,515

Marion County

Planning Department  
P.O. Box 227  
Aumsville, Oregon 97325  
749-2030

# on planning commission - 5  
# on planning staff - 0

Mike Woodward, Planning Commission Chairman

Comprehensive Plan adopted 9/26/77

Zoning Ordinance adopted 9/26/77

Subdivision Ordinance adopted 9/26/77

Copies will be submitted to LCDC on 4/1/78

## AURORA

Population: 520

Marion County

Planning Department  
P.O. Box 108  
307 Main Street  
Aurora, Oregon 97002  
678-1283

# on planning commission - 7

Charles Potter, Planning Commission Chairman

Comprehensive Plan - not completed

Zoning Ordinance adopted 8-8-77

Subdivision Ordinance - not passed

## BAKER

Population: 9,655

Baker County

Planning Department  
City of Baker  
P.O. Box 650  
Baker, Oregon 97814  
523-4437

# on planning commission - 7  
# on planning staff - 1

Jack Leuenberger, Planning Director and Zoning Administrator

Peggi Timm, Citizen Involvement Committee Chairman

Dick Hindman, Planning Commission Chairman

Comprehensive Plan adopted 1966 - revised 7/78

Zoning Ordinance adopted 1968

Subdivision Ordinance adopted 1956 - being revised

Expect to be in compliance with LCDC goals 7-1-78

## BANDON

Population: 2,228

Coos County

Planning Department  
City of Bandon  
P.O. Box 67  
Bandon, Oregon 97411  
347-3606

# on planning commission - 7  
# on planning staff - 0

W. M. Donahue, Zoning Administrator

Melvin E. Boak, Planning Commission Chairman

Comprehensive Plan adopted 7/74

Zoning Ordinance adopted 12/76

Subdivision Ordinance adopted 4/75

In compliance with LCDC goals

## BANKS

Population: 525

Washington County

Planning Department  
P.O. Box 428  
Banks, Oregon 97106

# on planning commission - 8  
# on planning staff - 1

Bob Crup, Planning Director and Citizen Involvement Committee Chairman  
Howard Steinbach, Zoning Administrator and Chairman of Planning Commission

Expect to be in compliance with LCDC goals 7-1-78

## BAY CITY

Population: 1,015

Tillamook County

Planning Department  
P.O. Box 307  
Bay City, Oregon 97107  
377-2288

# on planning commission - 5  
# on planning staff - 1 CTIC  
consultant

Mike Morgan, CTIC Consultant

Virgil M. Simmons, Citizen Involvement Committee Chairman

Phyllis Wustenberg, Planning Commission Chairman

Expect to be in compliance with LCDC goals 7-1-78

## BEAVERTON

Population: 23,300

Washington County

Planning Department  
4950 SW Hall Blvd.  
Beaverton, Oregon 97005  
641-2191, Ext. 242

# on planning commission - 7  
# on planning staff - 5

Ron Saroff, Planning Director

Scott Burgess, Zoning Administrator

Loren Evans, Planning Commission Chairman

Comprehensive Plan adopted 12/18/72

Zoning Ordinance adopted 8/8/60

Subdivision Ordinance adopted 2/7/63

Expect to be in compliance with LCDC goals 7/79

BEND

Population 16,800

Deschutes County

Planning Department  
P.O. Box 431  
Bend, Oregon 97701  
382-4211

# on planning commission - 9  
# on planning staff - 1

John C. Hossick, Planning Director

Robert Bristol, Citizen Involvement Committee Chairman & Planning Commission Chairman

Comprehensive Plan adopted 6/2/76

Zoning Ordinance adopted 1/69

Subdivision Ordinance adopted 1962

Expect to be in compliance with LCDC goals 8/78

BOARDMAN

Population: 1,020

Morrow County

Planning Department  
P.O. Box 228  
Boardman, Oregon 97818  
481-9252

# on planning commission - 9  
# on planning staff - 1

Jim Thoupson, Planning Director and Zoning Administrator

Gene Allen, Citizen Involvement Committee Chairman

Henry B. Gantenbein, Planning Commission Chairman

Comprehensive Plan adopted 8-75

Zoning Ordinance adopted 1964

Subdivision Ordinance adopted 1964

In compliance with LCDC goals

## BROOKINGS

Population: 3,370

Curry County

Planning Department  
P.O. Box C  
Brookings, Oregon 97415  
469-2163

# on planning commission - 7  
# on planning staff - 1

Earl Breuer, Citizen Involvement Committee Chairman and Planning Commission Chairman

Comprehensive Plan adopted 7-14-70

Zoning Ordinance adopted 7-14-70

Subdivision Ordinance adopted 8-11-70

In compliance with LCDC goals

## BROWNSVILLE

Population: 1,256

Linn County

Planning Department  
City Hall  
255 N. Main Street  
P.O. Box 188  
Brownsville, Oregon 97327  
466-5666 or 466-5880

# on planning commission - 7  
# on planning staff - 1/2

Jim Claypool, Planning Director

Bill Yeldig, Citizen Involvement Committee Chairman and Planning Commission Chairman

Comprehensive Plan adopted (anticipated) 7/78

Zoning Ordinance adopted 12/63

Subdivision Ordinance adopted 8-63

Expect to be in compliance with LCDC goals 7-79

## BURNS

Population: 3,675

Harney County

Planning Department  
90 West Washington  
Burns, Oregon 97720  
573-2383

# on planning commission - 7  
# on planning staff - 0

Stubbs and Associates has been hired as consultant

Norm Stephen, Planning Commission Chairman

Comprehensive Plan adopted 1972

Zoning Ordinance adopted 1956

Subdivision Ordinance adopted 1972

Expect to be in compliance with LCDC goals 1981

## CANBY

Population: 6,400

Clackamas County

Planning Department  
City Hall  
182 N. Holly  
Canby, Oregon 97013  
266-4041 or 655-9901

# on planning commission - 7  
# on planning staff - 3 from  
consultant's office

Eldon E. Edwards, Planning Consultants act as Planning Director

Duane Weeks, Citizen Involvement Committee Chairman

Gordon Ross, Planning Commission Chairman

Comprehensive Interim Plan adopted 11/1/76

Zoning Ordinance adopted 9/8/75

Subdivision Ordinance adopted 3/4/74

Expect to be in compliance with LCDC goals 12/78



## CANNON BEACH

Population: 910

Clatsop County

Planning Department  
Box 368  
Cannon Beach, Oregon 97110  
436-2328

# on planning commission - 9  
# on planning staff - 1 CTIC  
consultant

Gavin Young, Citizen Involvement Committee Chairman and Planning Commission Chairman

Zoning Ordinance adopted 1969

Subdivision Ordinance adopted 1975

Expect to be in compliance with LCDC goals 8/78

## CANYON CITY

Population: 669

Grant County

Planning Department  
123 S. Washington  
Canyon City, Oregon 97820  
575-0509

# on planning commission - 8

William Wall, Planning Commission Chairman

Comprehensive Plan adopted 2-5-72

Zoning Ordinance adopted 10-11-71

Subdivision Ordinance adopted 1-6-77

In compliance with LCDC goals

## CANYONVILLE

Population: 1,325

Douglas County

Planning Department  
P.O. Box 765  
Canyonville, Oregon 97417  
839-4680

# on planning commission - 9  
# of planning staff - 0

Carl Hill, Planning Commission Chairman

Comprehensive Plan adopted 6/26/73

Zoning Ordinance adopted 12/17/73

Subdivision Ordinance adopted 3/21/77

## CARLTON

Population: 1,370

Yamhill County

Planning Department  
P.O. Box 452  
City Hall  
Carlton, Oregon  
852-7575

# on planning commission - 7

Planning assistance obtained from Yamhill County Planning, McMinnville

Donald Gouge, Acting Chairman of Planning Commission

Zoning Ordinance adopted 6/69

Subdivision Ordinance adopted 4/71

In compliance with LCDC goals

## CASCADE LOCKS

Population: 860

Hood River County

Planning Department

# on planning commission - 5

P.O. Box 308

# on planning staff - 1  
consultant

Cascade Locks, Oregon 97014  
374-8510

C. Schmitt, Planning Director and Zoning Administrator

John Carlson, Citizen Involvement Committee Chairman

Gyda Haight, Planning Commission Chairman

Comprehensive Plan adopted 2/27/74

Expect to be in compliance with LCDC goals 5/1/78

## CAVE JUNCTION

Population: 845

Josephine County

Planning Department

# on planning commission - 7

P.O. Box F

# on planning staff - 1

Cave Junction, Oregon 97523  
592-2156

Alex Forrester, Planning Director

Bill Blind, Planning Commission Chairman

Zoning Interim Ordinances adopted 6/69 and 2/78

Subdivision Ordinance adopted 10/75

Expect to be in compliance with LCDC goals 12/78

## CENTRAL POINT

Population: 5,930

Jackson County

Planning Department  
250 E. Pine  
Central Point, Oregon 97502  
664-1201

# on planning commission - 9  
# on planning staff - 2

E. David Kucera, Planning Director and Zoning Administrator

Donald Banks, Planning Commission Chairman

Comprehensive Plan adopted 6/26/73, revised 12/30/75 and 9/10/76

Zoning Ordinance adopted 6/6/67

Subdivision Ordinance adopted 9/3/63

In compliance with LCDC goals

## CHILOQUIN

Population: 920

Klamath County

Planning Department  
P.O. Box 196  
Chiloquin, Oregon 97624  
783-2717

# on planning commission - 5  
# on planning staff - 0

John A. Kalita, Planning Director and Planning Commission Chairman

Charmaine Wells, Zoning Administrator

John A. Kalita, Citizen Involvement Committee Chairman

CONDON

Population: 930

Gilliam County

Planning Department  
Condon, Oregon 97823  
384-2773

# on planning commission - 3  
# on planning staff - 0

Marianne Jamieson, Planning Director and Zoning Administrator, and Planning Commission Chairman

Comprehensive Plan adopted 7/77

Subdivision Ordinance adopted 4/77

In compliance with LCDC goals

COOS BAY

Population: 14,350

Coos County

Planning Department  
P.O. Box 1118  
Coos Bay, Oregon 97420  
269-1181

# on planning commission - 7  
# on planning staff - 4

Tony Virgili, Community Development Director

Bill Grile, Planning Coordinator

Matt Christensen, Citizen Involvement Committee

Bob Vratney, Planning Commission Chairman

Comprehensive Plan adopted 1974

Zoning Ordinance adopted 1976

Subdivision Ordinance adopted 1959

Expect to be in compliance with LCDC goals 1/1/80

## COQUILLE

Population: 4,716

Coos County

Planning Department  
99 E. 2nd Street  
Coquille, Oregon 97423  
396-2115

# on planning commission - 7  
# on planning staff - 1

Larry Dalrymple, City Manager acts as Planning Director & Zoning Administrator

Robert Pierce, Citizen Involvement Committee Chairman

Steve Bone, Planning Commission Chairman

Zoning Ordinance adopted 1969

Subdivision Ordinance adopted 1967

Expect to be in compliance with LCDC goals 7-79

## CORNELIUS

Population: 3,060

Washington County

Planning Department  
City Hall  
120 N. 13th  
Cornelius, Oregon 97113  
648-1197 or 357-9112

# on planning commission - 9

Eldon E. Edwards, Planning Consultants, act as Planning Director

Charles Munford, Planning Commission Chairman

Comprehensive Plan adopted 1974

Zoning Ordinance revised 1977

Subdivision Ordinance revised 1977

Expect to be in compliance with LCDC goals 6/30/78

## CORVALLIS

Population: 28,538

Benton County

Planning Department  
City Hall  
501 SW Madison Avenue  
Corvallis, Oregon 97377  
757-6908

# on planning commission - 9  
# on planning staff - 6

Planning Director position vacant as of 9/1/78

Eric Blackledge and Marilyn Koenitzer, Co-chairpersons of Citizen Involvement Committee

George Heilig, Planning Commission Chairman

Comprehensive Plan adopted 1968

Zoning Ordinance adopted 1953 - with amendments

Subdivision Ordinance adopted 1972 - with amendments

Expect to be in compliance with LCDC goals 1981

## COTTAGE GROVE

Population: 7,200

Lane County

Department of Planning & Development  
City Hall  
400 Main Street  
Cottage Grove, Oregon 97424  
942-3349

# on planning commission - 7  
# on planning staff - 3

Bill Guenzler, Planning Director

Bob Matson, Citizen Involvement Committee Chairman and Planning Commission Chairman

Comprehensive Plan adopted 1971

Zoning Ordinance adopted 11/71

Subdivision Ordinance adopted 11/71

In compliance with LCDC goals

COVE

Population: 460

Union County

Planning Department  
P.O. Box 8  
Cove, Oregon 97824  
568-4406

# on planning commission - 8  
# on planning staff - 1

Lynn Steiger, Planning Director  
Gary Voelker, Zoning Administrator  
R. W. Hagan, Citizen Involvement Committee Chairman  
Grant Born, Planning Commission Chairman

Zoning Ordinance adopted 4/19/77  
Subdivision Ordinance adopted 1/7/77  
In compliance with LCDC goals

CRESWELL

Population: 1,650

Lane County

Planning Department  
P.O. Box 276  
Creswell, Oregon 97426  
895-2531

# on planning commission - 7  
# on planning staff - 0

Ronald L. Hanson, Planning Director and Zoning Administrator  
Jim Heaton, Citizen Involvement Committee Chairman and Planning Commission  
Chairman

Comprehensive Plan adopted 1974  
Zoning Ordinance adopted 1960  
Subdivision Ordinance adopted 1966  
Expect to be in compliance with LCDC goals fall of 1979



CULVER

Population: 464

Jefferson County

Planning Department  
P.O. Box 256  
Culver, Oregon 97734  
546-6494

# on planning commission 5  
# on planning staff - 1

Dan Meader, Tenneson Engineering Corporation, Planning Director and  
Zoning Administrator

Barbara Frazier, Planning Commission Chairman

Comprehensive Plan adopted 6/77

Zoning Ordinance adopted 12/76

Subdivision Ordinance adopted 5/2/78

LCDC compliance pending

DALLAS

Population: 8,100

Polk County

Planning Department  
187 SE Court Street  
P.O. Box 67  
Dallas, Oregon 97338  
623-2338

# on planning commission - 7  
# on planning staff - 2

C. E. (Gene) Fredrickson, Planning Director and Zoning Administrator

Ron Terry, Citizen Involvement Committee Chairman

Charles Koenig, Planning Commission Chairman

Comprehensive Plan in draft stage

Zoning Ordinance adopted 1971

Subdivision Ordinance adopted 1974

Expect to be in compliance with LCDC goals 9/78

DAYTON

Population: 1,420

Yamhill County

Planning Department  
Box 338  
Dayton, Oregon 97114  
864-2221

# on planning commission - 7  
# on planning staff - 0

Ernest Budke, Planning Commission Chairman

Subdivision Ordinance adopted 11/20/75

DEPOE BAY

Population: 550

Lincoln County

Planning Department  
P.O. Box 8  
Depoe Bay, Oregon 97341  
765-2361

# on planning commission - 9  
# on planning staff - 0

Assistance received from Lincoln County Planning Director - Oscar Granger

Robert J. Lowe, Planning Commission Chairman

Zoning Ordinance adopted 3/76

Expect to be in compliance with LCDC goals 12/78

DETROIT

Population: 370

Marion County

Planning Department  
P.O. Box 589  
Detroit, Oregon 97342  
854-3496

# on planning commission - 9  
# on planning staff - 2

John Russell from Mid-Willamette Valley Council of Governments acts as  
Planning Director and Zoning Administrator

Dave Newton, Citizen Involvement Committee Chairman

John Roberts, Planning Commission Chairman

Expect to be in compliance with LCDC goals 7/1/78

## DRAIN

Population: 1,300

Douglas County

Planning Department  
P.O. Box 158  
Drain, Oregon 97435  
836-2417

# on planning commission - 5  
# on planning staff - 0

Roy Morrison, Citizen Involvement Committee Chairman and Planning Commission Chairman

Expect to be in compliance with LCDC goals 1983

## DUFUR

Population: 580

Wasco County

Planning Department  
P.O. Box 145  
Dufur, Oregon 97021  
467-2349

# on planning commission - 7  
# on planning staff - 1

Dan Meader, Planning Director and Zoning Administrator

Elna Reed, Citizen Involvement Committee Chairman and Planning Commission Chairman

Comprehensive Plan adopted 12/16/78

Zoning Ordinance pending

In compliance with LCDC goals

## DUNDEE

Population: 1,155

Yamhill County

Planning Department  
P.O. Box 201  
Dundee, Oregon  
538-3922

# on planning commission - 9  
# on planning staff - 2

Use private consultant, CH<sub>2</sub>M Hill, as Planning Director

David Baker, Planning Commission Chairman

Expect to be in compliance with LCDC goals 4/78

## DUNES CITY

Population: 1,010

Lane County

Planning Department  
P.O. Box 97  
Westlake, Oregon 97493  
997-3338

# on planning commission - 5  
# on planning staff - 0

Shirley Merz, Citizen Involvement Committee Chairman

Evelyn Passenger, Planning Commission Chairman

Comprehensive Plan adopted 9/9/76

Zoning Ordinance adopted 6/7/65 (new zoning ordinance in hearings process)

Subdivision Ordinance adopted 6/15/75

Expect to be in compliance with LCDC goals 1/79

## DURHAM

Population: 252

Washington County

Planning Department  
P.O. Box 23483  
Tigard, Oregon 97223  
639-6851

# on planning commission - 9  
# on planning staff - 1

John E. Sattler, Planning Director & Zoning Administrator

Peggy Manning, Citizen Involvement Committee Chairman

Gery Schirado, Planning Commission Chairman

Zoning Ordinance adopted 1966

Subdivision Ordinance adopted 1966

Expect to be in compliance with LCDC goals 12/31/78

## EAGLE POINT

Population: 2,740

Jackson County

Planning Department  
City of Eagle Point  
Drawer "C"  
Eagle Point, Oregon 97524  
826-4212

# on planning commission - 7  
# on planning staff - 2

Richard L. Soderberg, Planning Director and Zoning Administrator  
John Payne, Citizen Involvement Committee Chairman and Planning Commission Chairman

Zoning Ordinance adopted 1/3/72

Subdivision Ordinance adopted 8/12/74

Expect to be in compliance with LCDC goals 1979-80

## EASTSIDE

Population: 1,655

Coos County

Planning Department  
P.O. Box 4325  
Eastside, Oregon  
267-6811

# on planning commission - 7

Phillip H. Abrahamsen, Planning Commission Chairman

Zoning Ordinance adopted 1/14/64

## ENTERPRISE

Population: 1,906

Wallowa County

Recorder's Office  
426-3136

# on planning commission - 7

Norman Potratz, Planning Commission Chairman

Comprehensive Plan adopted 6/27/75 - being revised

Zoning Ordinance adopted 8/21/67 - being revised

Subdivision Ordinance adopted 2/14/77

Expect to be in compliance with LCDC goals 9-30-78

## ESTACADA

Population: 1,805

Clackamas County

Planning Department  
P.O. Box 247  
Estacada, Oregon 97023  
630-3223

# on planning commission - 9

Kent Kaylor, City Manager, acts as Planning Director and Zoning Administrator  
Christopher P. Kleps, Citizen Involvement Committee Chairman and Planning Commission Chairman

Comprehensive Plan adopted 7/77

Zoning Ordinance adopted 1968

Subdivision Ordinance adopted 1974

## EUGENE

Population: 100,450

Lane County

Planning Department  
City Hall, Rm. 106  
Eugene, Oregon 97401  
687-5271

# on planning commission - 9  
# on planning staff - 16 full-time  
- 5 part-time

John Porter, Planning Director

Jim Saul, Zoning

George Platt, Citizen Involvement Committee Chairman

James Berhard, Planning Commission Chairman

Comprehensive Plan adopted 1972

Zoning Ordinance adopted 1968

Subdivision Ordinance adopted 1974

In compliance with LCDC goals

## FAIRVIEW

Population: 1,704

Multnomah County

Planning Department  
P.O. Box 395  
Fairview, Oregon  
665-7929

# on planning commission - 7

James Robinson, Citizen Involvement Committee Chairman and Planning Commission Chairman

Comprehensive Plan adopted 8/2/77

Zoning Ordinance adopted 2/21/68

Subdivision Ordinance adopted 11/20/74

In compliance with LCDC goals

## FALLS CITY

Population: 830

Polk County

Wayne (Rusty) Klem  
Polk County Planning Dept.  
Courthouse  
Dallas, Oregon 97338  
623-8171

# on planning commission - 7  
# on planning staff - 1

Bruce Peet, City Administrator, acts as Planning Director & Zoning Administrator

Comprehensive Interim Plan adopted 3/1/75

Zoning Ordinance adopted 1/3/72

Subdivision Ordinance adopted 3/20/72

Expect to be in compliance with LCDC goals 12/31/78

## FLORENCE

Population: 3,200

Lane County

Planning Department  
P.O. Box 340  
Florence, Oregon 97439  
997-3437

# on planning commission - 7  
# on planning staff - 2

Karl Jennings, Planning Director  
Marilyn Adkins, Planning Coordinator  
Jerry Westphal, Citizen Involvement Committee Chairman  
Ray Mans, Planning Commission Chairman

Comprehensive Plan adopted 12/75  
Zoning Ordinance adopted 9/76  
Subdivision Ordinance adopted 8/76  
Expect to be in compliance with LCDC goals 1/79

## FOREST GROVE

Population: 10,800

Washington County

Planning Department  
1924 Council Street  
Forest Grove, Oregon 97116  
357-7151, Ext. 255

# on planning commission - 9  
# on planning staff - 5

Dick Bewersdorff, Planning Director  
Brian Shetterly, Zoning Administrator  
Harold M. Haynes, Citizen Involvement Committee Chairman  
Calvin Clayton, Planning Commission Chairman

Zoning Ordinance adopted 1971  
Subdivision Ordinance adopted 1974  
Expect to be in compliance with LCDC goals 7/80



## GASTON

Population: 450

Washington County

Planning Department  
985-7105

# on planning commission - 5  
# on planning staff - 0

Ronald Bigelow, Citizen Involvement Committee Chairman

Norman Bennett, Planning Commission Chairman

## GATES

Population: 300

Marion-Linn Counties

Planning Department  
P.O. Box 577  
Gates, Oregon 97346  
897-2669

# on planning commission - 8

Lola Henness, Chairman of Citizen Involvement Committee and Planning Commission

Comprehensive Plan adopted 6/13/78

Zoning Ordinance adopted 11/75

Subdivision Ordinance adopted 3/77

In compliance with LCDC goals

## GEARHART

Population: 870

Clatsop County

Planning Department  
City of Gearhart  
Drawer "D"  
Gearhart, Oregon 97138  
738-5501

# on planning commission - 9  
# on planning staff - 1 part-  
time from Clatsop-Tillamook  
Intergovernmental Council

Leo W. Sayles, Citizen Involvement Committee Chairman and Planning Commission Chairman

Comprehensive Plan adopted 3/2/77

Zoning Ordinance adopted 6/13/73 (under revision)

Subdivision Ordinance 3/2/77

Expect to be in compliance with LCDC goals 7/1/79

GERVAIS

Population: 845

Marion County

Planning Department  
792-4222

Zoning Ordinance adopted 1/18/78

Subdivision Ordinance adopted 1/18/78

GLADSTONE

Population: 8,985

Clackamas County

Planning Department  
City of Gladstone  
525 Portland Avenue  
Gladstone, Oregon 97027  
656-5223

# on planning commission - 7  
# on planning staff - 2

Michael V. Butts, Planning Director and Zoning Administrator

Steve Hanneman, Citizen Involvement Committee Chairman

James Towle, Planning Commission Chairman

Zoning Ordinance adopted 1975

Subdivision Ordinance adopted 1974

Expect to be in compliance with LCDC goals 3/79

GOLD BEACH

Population: 1,750

Curry County

Planning Department  
P.O. Box 1123  
Gold Beach, Oregon 97444  
247-7011, Ext. 227

# on planning commission - 5  
# on planning staff - 3 - one  
assigned to City of Gold  
Beach

Dick Wanderscheid, Planning Director and Zoning Administrator

Ted Martens, Chairman of Citizen Involvement Committee & Planning Commission

Comprehensive Plan being finalized

Zoning Ordinance adopted 4/12/72

Subdivision Ordinance adopted 3/23/76

In compliance with LCDC goals

## GRANTS PASS

Population: 14,000

Josephine County

Planning Department  
City of Grants Pass  
101 NW "A" Street  
Grants Pass, Oregon 97526  
476-8801

# on planning commission - 9  
# on planning staff - 2

Edward Gallagher, Director of Community Development  
Robert F. Fisher, Citizen Involvement Committee Chairman  
Betty L. Millet, Planning Commission Chairman

Comprehensive Plan adopted 11/5/69

Zoning Ordinance adopted 1/25/72

Expect to be in compliance with LCDC goals 3/1/80

## GRESHAM

Population: 27,500

Multnomah County

Comprehensive Planning  
11 NW First Street, Suite 206  
Gresham, Oregon 97030

# on planning commission - 7  
# on comprehensive Planning staff - 6  
# on current planning staff - 6

Current Planning  
150 W. Powell Blvd.  
Gresham, Oregon 97030  
666-3741

Micheal E. Nicholson, Planning Director  
James Keller, Zoning Administrator  
Diane G. Jones, Citizen Involvement Coordinator  
Robert Brunmeier, Planning Commission Chairman

Comprehensive Plan adopted 10/71

Zoning Ordinance adopted 4/75

Subdivision Ordinance adopted 12/75

Expect to be in compliance with LCDC goals 7/1/80

## HAINES

Population: 340

Baker County

Planning Department  
Haines, Oregon 97833

# on planning staff - 2

City Council acts as Planning Director

Ruth Clark, Councilperson, Haines, Oregon, Tel. # 856-3575

Toby Hacker, Councilperson, Haines, Oregon, Tel. # 856-3625

Assistance is received from William W. Quigley, Baker County Planning Director

## HALFWAY

Population: 390

Baker County

Planning Department  
P.O. Box 738  
Halfway, Oregon 97834  
742-4741

# on planning commission - 3

Milo Pope, Planning Director and Planning Commission Chairman

Herbie Scott, Zoning Administrator and Citizen Involvement Committee Chairman

Comprehensive Plan adopted 7/1/78

Zoning Ordinance adopted 7/1/78

Subdivision Ordinance adopted 7/1/78

In compliance with LCDC goals

## HALSEY

Population: 650

Linn County

Planning Department  
P.O. Box 35  
Halsey, Oregon 97348  
369-2522

# on planning commission - 9  
# on planning staff - 0

Marvin E. Gloege, Planning Director  
Vivian L. Roome, Citizen Involvement Committee Chairman  
John S. Smith, Planning Commission Chairman

Comprehensive Plan adopted 7/8/74  
Zoning Ordinance adopted 7/14/69  
Expect to be in compliance with LCDC goals 7/80

## HAMMOND

Population: 545

Clatsop County

Planning Department  
P.O. Box 161  
Hammond, Oregon 97121  
861-2712

# on planning commission - 7  
# on planning staff - 0

Gail Hochhalter, Planning Director & Zoning Administrator  
Judy Jeremiah, Citizen Involvement Committee Chairman  
Don Shaw, Planning Commission Chairman

Comprehensive Plan adopted 1973  
Zoning Ordinance adopted 1973  
Subdivision Ordinance adopted 1976  
Expect to be in compliance with LCDC goals 7/1/79

## HAPPY VALLEY

Population: 1,450

Clackamas County

Planning Department  
10602 SE 129th  
Portland, Oregon 97236  
760-3325

# on planning commission - 8  
# on planning staff - 0

James Grady, Planning Commission Chairman

Larry Frey, Citizen Involvement Committee Chairman

Comprehensive Plan adopted 1973 - being revised

Zoning Ordinance adopted 1970 - being revised

Subdivision Ordinance adopted 1965 - being revised

## HARRISBURG

Population: 1,700

Linn County

Planning Department  
P.O. Box 378  
Harrisburg, Oregon 97446  
995-6655

# on planning commission - 8  
# on planning staff - 1 part time

Don C. Jensen, Planning Commission Chairman

Comprehensive Plan adopted 10/67

Zoning Ordinance adopted 1/14/70

Subdivision Ordinance adopted 11/19/68

Expect to be in compliance with LCDC goals 12/79

## HEPPNER

Population: 1,700

Morrow County

Planning Department  
City Hall  
Box 756  
Heppner, Oregon 97836  
676-9618

# on planning commission - 9  
# on planning staff - 1

Marie Hall, Planning Director

L. E. Dick, Citizen Involvement Committee Chairman and Planning Commission Chairman

Zoning Ordinance adopted 12/5/66

Subdivision Ordinance adopted 5/1/72

Expect to be in compliance with LCDC goals 6/78

## HERMISTON

Population: 7,594

Umatilla County

Planning Consultant  
Rod Stubbs  
Stubbs & Associates  
280 Court Street, NE  
Suite 14  
Salem, Oregon 97301  
399-7621 or 1-800-452-9109

# on planning commission - 9  
# on planning staff - 1

L. T. Harper, Planning Director & Zoning Administrator

Bernard Carper, Citizen Involvement Committee Chairman and Planning Commission Chairman

Comprehensive Plan adopted 4/23/73

Zoning Ordinance adopted 5/12/75

Subdivision Ordinance adopted 4/14/75

Expect to be in compliance with LCDC goals 7/1/78

## HILLSBORO

Population: 22,000

Washington County

Planning Department  
205 SE 2nd Avenue  
Hillsboro, Oregon 97123  
648-0821

# on planning commission - 7  
# on planning staff - 4

Tim Erwert, Planning Director

John Bonn, Zoning Administrator

Barbara Frost, Citizen Involvement Committee Chairman and Planning Commission Chairman

Comprehensive Plan adopted 3/77

Zoning Ordinance adopted 9/63

Subdivision Ordinance adopted 7/77

Expect to be in compliance with LCDC goals 12/80

## HINES

Population: 1,570

Harney County

Planning Department  
City of Hines  
P.O. Box 336  
Hines, Oregon 97738  
573-2251

# on planning commission - 6  
# on planning staff - 0

Donald G. Witte, Citizen Involvement Committee Chairman and Planning Commission Chairman

Expect to be in compliance with LCDC goals 7/1/78



## HOOD RIVER

Population: 4,650

Hood River County

Planning Department  
P.O. Box 27  
Hood River, Oregon 97031  
386-5789

# on planning commission - 7  
# on planning staff - 1

Richard Lunceford, Planning Director and Zoning Administrator

Bruce Shaul, Planning Commission Chairman

Zoning Ordinance adopted 1954

Subdivision Ordinance adopted 1966

Expect to be in compliance with LCDC goals 12/78

## HUBBARD

Population: 1,497

Marion County

Planning Department  
P.O. Box 237  
Hubbard, Oregon 97032  
981-9633

# on planning commission - 9

Leonard Bizon, Citizen Involvement Committee Chairman and Planning Commission Chairman

Contract with County Coordinator on consultant basis

Comprehensive Plan adopted 6/23/77

Zoning Ordinance adopted 7/21/77

Subdivision Ordinance adopted 8/11/77

In compliance with LCDC goals

## IDANHA

Population: 430

Marion & Linn Counties

Planning Department  
Idanha City Hall  
Idanha, Oregon

# on planning commission - 10

June Mennis, Citizen Involvement Committee Chairman and Planning Commission Chairman

Expect to be in compliance with LCDC goals 7/1/78

## INDEPENDENCE

Population: 4,030

Polk County

Polk County Planning Department  
Polk County Courthouse  
Dallas, Oregon 97338  
838-0580 or 623-7181

# on planning commission - 7  
# on planning staff - 1

Mitch Rohse, Planning Director & Zoning Administrator

Ray Dunchel, Citizen Involvement Committee Chairman

Tom Karren, Planning Commission Chairman

Comprehensive Plan adopted 1/76

Zoning Ordinance adopted 1961

Subdivision Ordinance adopted 1961

Expect to be in compliance with LCDC goals 1/79

## IONE

Population: 415

Morrow County

Planning Department  
P.O. Box 361  
Ione, Oregon 97843  
1-800-452-8112

# on planning commission - 9  
# on planning staff - 1

Marie Hall, Planning Director

Fredrick T. Martin, Citizen Involvement Committee Chiarmen and Planning  
Commission Chairman

Comprehensive Plan adopted 6/78

Subdivision Ordinance adopted 5/77

Expect to be in compliance with LCDC goals 6/78

## ISLAND CITY

Population: 525

Union County

Planning Department  
Rt. 3, Box 4240  
LaGrande, Oregon 97850  
963-5017

# on planning commission - 6

Jim Lundy, Planning Director

W. Hardwick, Zoning Administrator

Richard Bloom, Citizen Involvement Committee Chairman

Bill Greenwald, Planning Commission Chairman

Comprehensive Plan pending

Zoning Ordinance adopted 7/25/77

Subdivision Ordinance adopted 3/14/77

In compliance with LCDC goals

## JACKSONVILLE

Population: 2,175

Jackson County

Planning Department  
P.O. Box 7  
Jacksonville, Oregon 97530  
899-1231

# on planning commission - 7  
# on planning staff - 1

George Cress, Assistant Planner, acts as Planning Director  
Robert A. Gray, City Administrator, acts as Zoning Administrator  
Tom Parks, Citizen Involvement Committee Chairman  
Darrell Davis, Planning Commission Chairman

Comprehensive Plan adopted 1/18/72  
Zoning Ordinance adopted 7/5/66  
Subdivision Ordinance adopted 11/8/72  
Expect to be in compliance with LCDC goals 12/79

## JEFFERSON

Population: 1,630

Marion County

Planning Department  
163 N. Main Street  
Jefferson, Oregon 97352  
327-2768

# on planning commission - 9

Ellis Hamby, Citizen Involvement Committee Chairman and Planning Commission Chairman

Comprehensive Plan adopted 9/27/77  
Zoning Ordinance adopted 4/6/78  
Subdivision Ordinance adopted 3/16/78  
In compliance with LCDC goals

### JOHNSON CITY

Population: 450

Clackamas County

Planning Department  
8021 SE Posey Street  
Johnson City, Oregon 97222  
655-6750

# on planning commission - 5

Daryl R. Lund, Planning Director & Planning Commission Chairman

Leroy Glahn, Sr., Citizen Involvement Committee Chairman

Expect to be in compliance with LCDC goals 12/78

### JUNCTION CITY

Population: 3,010

Lane County

Planning Commission  
P.O. Box 245  
Junction City, Oregon 97448  
998-2153

# on planning commission - 7  
# on planning staff - 1 part-time  
secretary

Douglas Sweetland, Planning Commission Chairman

Comprehensive Plan adopted 11/73

Zoning Ordinance adopted 1/12/60

Subdivision Ordinance adopted 5/10/66

Expect to be in compliance with LCDC goals 1/1/79

## KING CITY

Population: 1,980

Washington County

Planning Department  
City of Kings City  
15390 SW 116th Avenue  
Kings City, Oregon 97223  
639-4082

# on planning commission - 5  
(city council acts as planning  
commission)

# on planning staff - 0

L. S. Carroll, Planning Director & Zoning Administrator

Ray Amey, Citizen Involvement Committee Chairman

L. S. Carroll, Planning Commission Chairman

Comprehensive Plan adopted 7/21/76

Zoning Ordinance adopted 3/18/70

Subdivision Ordinance adopted 3/18/70

In compliance with LCDC goals

## KLAMATH FALLS

Population: 17,235

Klamath County

Planning Department  
226 South 5th  
Klamath Falls, Oregon 97601  
884-3161

# on planning commission - 7  
# on planning staff - 4

Eliot Allen, Planning Director & Zoning Administrator

Roberta Young, Citizen Involvement Committee Chairman

Robert Bogatay, Planning Commission Chairman

Comprehensive Plan adoption expected 9/78

Zoning Ordinance adopted 11/59

Subdivision Ordinance adopted 2/77

Expect to be in compliance with LCDC goals 9/78

## LAGRANDE

Population: 10,900

Union County

Planning Department  
City Hall  
104 Elm Street  
LaGrande, Oregon 97850  
963-7161

# on planning commission - 7  
# on planning staff - 1

Rick Craiger, Planning Director

Jack W. Thomas, Citizen Involvement Committee Chairman and Planning Commission President

Comprehensive Plan adopted 4/20/77

Zoning Ordinance adopted 5/18/66

Subdivision Ordinance adopted 8/15/73

Expect to be in compliance with LCDC goals 7/78

## LAKE OSWEGO

Population: 21,400

Clackamas County

Planning Department  
City Hall  
348 N. State Street  
P.O. Box 369  
Lake Oswego, Oregon 97034  
636-3601

# on planning commission - 7  
# on planning staff - 4

Patrick Barnum, Planning Director

Neil Opsal, Citizen Involvement Committee Chairman

Joseph Glaze, Planning Commission Chairman

Comprehensive Plan adopted 1964

Zoning Ordinance adopted 1961

Subdivision Ordinance adopted 1958

Expect to be in compliance with LCDC goals 7/79

## LAKESIDE

Population: 1540

Coos County

Planning Department  
P.O. Box L  
Lakeside, Oregon 97449  
759-3171

# on planning commission - 5  
# on planning staff - 0

Donald J. Bibbey, Planning Director

Joe Jankowitz, Citizen Involvement Committee Chairman

King Phelps, Planning Commission Chairman

Comprehensive Plan adopted 1/79

Zoning Ordinance adopted 1/79

Subdivision Ordinance adopted 5/19/77

In compliance with LCDC goals

## LAKEVIEW

Population: 2,870

Lake County

Planning Department  
525 North First Street  
Lakeview, Oregon 97630  
947-2029

# on planning commission - 7  
# on planning staff - 2

Lynn D. Steiger & Associates, Inc., Consulting Planners, act as Planning Director

Delores Edmonson/Don Lindsey, Zoning Administrators

Tom Hauptman, Planning Commission Chairman

Comprehensive Plan adopted 2/1/77

Zoning Ordinance adopted 9/1/64

Subdivision Ordinance adopted 9/24/58

In compliance with LCDC goals



## LEBANON

Population: 8,800

Linn County

Planning Department  
City of Lebanon  
City Hall  
P.O. Box 86  
Lebanon, Oregon 97355  
258-3185

# on planning commission - 9  
# on planning staff - 2

James R. Nicoli, Planning Director  
John Humphreys, Zoning Administrator  
Jim McDaniel, Planning Commission Chairman

Zoning Ordinance adopted 3/21/72  
Subdivision Ordinance adopted 2/23/77  
Expect to be in compliance with LCDC goals 10/78

## LEXINGTON

Population: 245

Morrow County

Planning Department  
c/o Recorder  
P.O. Box 587  
Lexington, Oregon 97839  
989-8419

# on planning commission - 5  
# on planning staff - 0

Lois M. Allyn, Recorder acts as Zoning Administrator

The city council functions as the Citizen Involvement Committee and  
Planning Commission  
Lee Padberg, Mayor

Comprehensive Plan adoption expected 6/27/78  
Zoning Ordinance adopted 1973 - being revised, adoption expected 6/27/78  
Subdivision Ordinance adoption expected 6/27/78  
In compliance with LCDC goals

## LINCOLN CITY

Population: 5,007

Lincoln County

Planning Department  
P.O. Box 48  
Lincoln City, Oregon 97367  
996-2151

# on planning commission - 7  
# on planning staff - 2

Carl A. Lindberg, Planning Director and Zoning Administrator

Ernie Kublick, Citizen Involvement Committee Chairman

A. M. Hatton, Planning Commission Chairman

Comprehensive Plan adopted 12/29/76

Zoning Ordinance adopted 5/24/77

Subdivision Ordinance adopted 4/8/74

Expect to be in compliance with LCDC goals 7/80

## LONEROCK

Population: 20

Gilliam County

Planning Department  
Sam Nichols  
Lonerock Route  
Condon, Oregon 97823

# on planning commission - 3

Sam Nichols, Planning Director

Alma Campbell, Citizen Involvement Committee Chairman

Mattlon Hicks, Planning Commission Chairman

Comprehensive Plan adopted 2/9/78

LONG CREEK

Population: 205

Grant County

Planning Department  
P.O. Box 547  
Long Creek, Oregon 97856

Ivan McDaniel, Mayor, acts as Planning Director

In compliance with LCDC goals

LOSTINE

Population: 230

Wallowa County

Planning Department  
City of Lostine  
P.O. Box 23  
Lostine, Oregon 97857  
569-2415

# on planning commission - 6  
# on planning staff - 1

City Council acts as Planning Director & Zoning Administrator

Mayor Jack Baney acts as Chairman of Citizen Involvement Committee and  
Planning Commission Chairman

Comprehensive Plan adopted 6/1/77

Zoning Ordinance adopted 6/1/77

Subdivision Ordinance adopted 11/8/76

In compliance with LCDC goals

## LOWELL

Population: 630

Lane County

Planning Department  
Box 347  
Lowell, Oregon 97452  
937-2157

# on planning commission - 7  
# on planning staff - 1

Karl Eysenbach, Administrative Assistant, acts as Planning Director and Zoning Administrator

Kenneth Stevenson, Citizen Involvement Committee Chairman

Donald Gray, Planning Commission Chairman

Comprehensive Plan adopted 3/6/78

Zoning Ordinance adopted 8/1/72 - being revised

Subdivision Ordinance adopted 9/13/76

Expect to be in compliance with LCDC goals 7/1/78

## LYONS

Population: 875

Linn County

Planning Department  
City Hall  
P.O. Box 81  
Lyons, Oregon 97358  
859-2366

# on planning commission - 7  
# on planning staff - 0

John C. Long, Planning Director and Planning Commission Chairman

Virginia A. Griffith, Zoning Administrator

Comprehensive Plan adopted 7/78

Zoning Ordinance adopted 7/78

Subdivision Ordinance adopted 7/78

In compliance with LCDC goals

## MAUPIN

Population: 615

Wasco County

Maupin Planning Commission  
c/o M. R. Richmond  
Maupin, Oregon 97037  
395-2688

# on planning commission - 7  
# on planning staff - 0

Dan Durow, Planning Director

M. R. Richmond, Zoning Administrator and Planning Commission Chairman

Zoning Ordinance adopted 1971

Expect to be in compliance with LCDC goals 10/1/78

## MANZANITA

Population: 480

Tillamook County

Planning Department  
P.O. Box C  
Manzanita, Oregon 97130  
368-5343

# on planning commission - 9  
# on planning staff - 0

Tom Jones, Citizen Involvement Committee Chairman and Planning Commission Chairman

Zoning Ordinance adopted 8-7-76

Subdivision Ordinance adopted 10/8/76

Expect to be in compliance with LCDC goals 6/30/78

## MAYWOOD PARK

Population: 1,065

Multnomah County

Planning Department  
P.O. Box 20344  
Maywood Park, Oregon 97220  
252-3150

# on planning commission - 5  
# on planning staff - 0

Tom Johnston, Planning Director and Planning Commission Chairman

Max Taylor, Citizen Involvement Committee Chairman

Zoning Ordinance - same as Multnomah County's

Subdivision Ordinance - same as Multnomah County's

Expect to be in compliance with LCDC goals late 1978

## MCMINNVILLE

Population: 13,200

Yamhill County

Planning Department  
211 South Cows or  
City Hall  
McMinnville, Oregon 97128  
472-9371, Ext. 320

# on planning commission - 9  
# on planning staff - 3 1/2

Richard M. Highsmith, III, Planning Director & Zoning Administrator

Fred Patton, Citizen Involvement Committee Chairman and Planning Commission Chairman

Comprehensive Plan adopted 1971

Zoning Ordinance adopted 1968

Subdivision Ordinance adopted 1974

Expect to be in compliance with LCDC goals 1979

## MEDFORD

Population: 37,100

Jackson County

Planning Department  
Medford City Hall  
Medford, Oregon 97501  
776-7463

# on planning commission - 9  
# on planning staff - 6

Richard A. Ullian, Planning Director  
James Field, Chairman, Citizens Planning Advisory Committee  
Walter W. Wassum, Planning Commission Chairman

Comprehensive Plan adopted 10/16/75  
Zoning Ordinance adopted 12/22/66  
Subdivision Ordinance adopted 6/4/69  
In partial compliance with LCDC goals

## MERRILL

Population: 825

Klamath County

Planning Department  
P.O. Box 421  
Merrill, Oregon 97633  
798-5808

# on planning commission - 7  
# on planning staff - 0

Ted Roller, Planning Director, Citizen Involvement Committee Chairman,  
and Planning Commission Chairman

Comprehensive Plan adopted 11/29/76  
Zoning Ordinance adopted 10/18/77  
Subdivision Ordinance adopted 10/18/77  
In compliance with LCDC goals

## METOLIUS

Population: 450

Jefferson County

Planning Department  
Garrett Cooke  
591 8th  
Metolius, Oregon 97442  
546-3645

# on planning commission - 7  
# on planning staff - 0

Garrett Cooke, Planning Director, Zoning Administrator, and Planning  
Commission Chairman

Expect to be in compliance with LCDC goals 10/78

## MILL CITY

Population: 1,580

Linn & Marion Counties

Planning Department  
City Hall  
P.O. Box 256  
Mill City, Oregon 97360  
897-2302

# on planning commission - 9  
# on planning staff - 1 on  
contract from Linn County

James W. Jaquette, Citizen Involvement Committee Chairman and Planning  
Commission Chairman

Zoning Ordinance adopted 12/8/65

Subdivision Ordinance adopted 4/21/71

Expect to be in compliance with LCDC goals 9/1/79



## MILLERSBURG

Population: 605

Linn County

Planning Department  
4310 NE Woods Road  
Albany, Oregon 97321  
928-4523

# on planning commission - 9  
# on planning staff - 1

Don Driscoll, Planning Director

Baxter Gamble, Citizen Involvement Committee Chairman and Planning  
Commission Chairman

Comprehensive Plan adopted 5/76

Zoning Ordinance adopted 5/76

In compliance with LCDC goals

## MILTON-FREEWATER

Population: 4,950

Umatilla County

Planning Department  
City Hall  
P.O. Box 6  
Milton-Freewater, Oregon 97896  
938-5596

# on planning commission - 9  
# on planning staff - 1

Dan Zimmerman, Citizen Involvement Committee Chairman

Dale Courtney, Planning Commission Chairman

Comprehensive Plan adopted 5/78

Zoning Ordinance adopted 1951

Subdivision Ordinance adopted 4/74

Expect to be in compliance with LCDC goals 6/78

## MILWAUKIE

Population: 17,715

Clackamas County

Planning Department  
City Hall  
10722 SE Main Street  
Milwaukie, Oregon 97222  
659-5171

# on planning commission - 7  
# on planning staff - 3

Cyrus Nims, Planning Director

Ann Nickel & Katie Orlando, Co-Chairmen of Citizen Involvement Committee

Mark Landis, Planning Commission Chairman

Comprehensive Plan adopted 1969

Zoning Ordinance adopted 7/75

Subdivision Ordinance adopted 5/22/67

Expect to be in compliance with LCDC goals 9/79

## MITCHELL

Population: 200

Wheeler County

Planning Department  
Mitchell City Council  
Mitchell, Oregon

# on planning commission - 6

Comprehensive Plan adopted 2/78

Zoning Ordinance adopted 1970

## MOLALLA

Population: 2,950

Clackamas County

Planning Department  
City of Molalla  
P.O. Box 248  
Molalla, Oregon 97038  
829-6855

# on planning commission - 9  
# on planning staff - 0  
3 from Eldon E. Edwards,  
Planning Consultants

John Whiteside, Zoning Administrator  
Donald Pence, Citizen Involvement Committee Chairman  
Doris Pence, Planning Commission Chairman

Comprehensive Plan adopted 11/66  
Zoning Ordinance adopted 11/66  
Subdivision Ordinance adopted 11/66  
Expect to be in compliance with LCDC goals 6/30/78

## MONMOUTH

Population: 6,255

Polk County

Planning Department  
Polk County Courthouse  
Dallas, Oregon 97338  
838-0580

# on planning commission - 10

Contract with Polk County for planning services

Mitch Rhose, Planning Director  
Joseph Penna, Citizen Involvement Committee Chairman  
Richard T. Scott, Planning Commission Chairman

Comprehensive Plan adopted 1972  
Zoning Ordinance adopted 1962  
Subdivision Ordinance adopted 1960  
Expect to be in compliance with LCDC goals 9/78

## MONROE

Population: 490

Benton County

City of Monroe  
Planning Commission Chairman  
Monroe, Oregon 97456  
847-5176

# on planning commission - 7  
# on planning staff - 0

Charles Green Planning Commission Chairman

Zoning Ordinance adopted 10/21/68

Expect to be in compliance with LCDC goals 7/1/80

## MONUMENT

Population: 180

Grant County

City of Monument  
Monument, Oregon 97864  
934-2311

# on planning commission - 9  
( City Council)  
# on planning staff - 0

Jack Sweek, Mayor, acts as Planning Director & Zoning Administrator

The City Council does the planning in cooperation with Grant County  
Planning Commission

## MT. ANGEL

Population: 2,500

Marion County

Planning Department  
P.O. Box 105  
Mt. Angel, Oregon 97362  
845-6139

# on planning commission - 5  
# on planning staff - 0

Dr. George Cann, Citizen Involvement Committee Chairman

Thomas C. Bauman, Planning Commission Chairman

Comprehensive Plan adopted 4/3/78

Zoning Ordinance adopted 9/13/77

Subdivision Ordinance adopted 9/13/77

In compliance with LCDC goals

## MYRTLE CREEK

Population: 3,280

Douglas County

Planning Department  
P.O. Box 745  
207 NW Pleasant  
City Hall  
Myrtle Creek, Oregon 97457  
863-3171

# on planning commission - 9  
# on planning staff - 1

Nada Gohn, City Administrator, acts as Planning Director

Deanne Brougher, Planning Aide

Warren Poland, Citizen Involvement Committee Chairman

Larry Luehring, Planning Commission Chairman

Comprehensive Plan adopted 12/74

Zoning Ordinance adopted 8/73

Subdivision Ordinance adopted 3/68

Expect to be in compliance with LCDC goals 7/78

## MYRTLE POINT

Population: 2,900

Coos County

Planning Department  
424 5th Street  
Myrtle Point, Oregon 97458  
572-2626

# on planning commission - 7  
# on planning staff - 0

Ken Cerotsky, Zoning Administrator

Ed Moon, Citizen Involvement Committee Chairman

Ed Street, Planning Commission Chairman

Comprehensive Plan not completed

Zoning Ordinance adopted 6/16/75

Subdivision Ordinance adopted 8/7/61

## NEHALEM

Population: 260

Tillamook County

Planning Department  
P.O. Box 156  
Nehalem, Oregon 97131  
368-5612

# on planning commission - 6  
# on planning staff - 0

Roy Harwood, Citizen Involvement Committee Chairman

Alfred E. Vosper, Planning Commission Chairman

Zoning Ordinance adopted 3/14/78

In compliance with LCDC goals

## NEWBERG

Population: 8,900

Yamhill County

Planning Department  
414 E. First Street  
Newberg, Oregon 97132  
538-9421

# on planning commission - 9  
# on planning staff - 1

Dale Blanton, Planning Director & Zoning Administrator

George Alexander, Citizen Involvement Committee Chairman

Alan Halstead, Planning Commission Chairman

Comprehensive Plan adopted 8/73

Zoning Ordinance adopted 5/8/61

Subdivision Ordinance adopted 5/2/60

Expect to be in compliance with LCDC goals 1978

## NEWPORT

Population: 6,550

Lincoln County

Planning Department  
810 SW Alder Street  
Newport, Oregon 97365  
265-5331

# on planning commission - 7  
# on planning staff - 1

Jan Monroe, Planning Director and Zoning Administrator  
Florene Howard, Citizen Involvement Committee Chairman  
Ray Carter, Planning Commission Chairman

Comprehensive Plan adopted 3/3/75

Zoning Ordinance adopted 12/5/66

Subdivision Ordinance adopted 12/16/74

Expect to be in compliance with LCDC goals 1979

## NORTH PLAINS

Population: 845

Washington County

City of North Plains  
P.O. Box 616  
440 Commercial  
North Plains, Oregon 97133  
647-5555

# on planning commission - 9  
# on planning staff - 0

Planning Consultant: Robert A. Browning, A.I.P., PO Box 657, Forest Grove  
Richard Stolte, Planning Commission Chairman

Zoning Ordinance adopted 1972

Expect to be in compliance with LCDC goals 12/79

## NORTH POWDER

Population: 420

Union County

Planning Department  
P.O. Box 287  
North Powder, Oregon 97867  
898-2185

# on planning commission - 14  
# on planning staff - 0

J. M. Brockway, Planning Director & Planning Commission Chairman  
Ed Taylor, Zoning Administrator  
J. M. Brockway, Citizen Involvement Committee Chairman

Comprehensive Plan adopted 5/19/75

Zoning Ordinance adopted 4/22/77

Subdivision Ordinance adopted 8/77

Expect to be in compliance with LCDC goals 7/78

## NYSSA

Population: 2,925

Malheur County

Planning Department  
14 S. 3rd Avenue  
Nyssa, Oregon  
372-2264

# on planning commission - 7  
# on planning staff - 1

Comprehensive Plan adopted 1965

Zoning Ordinance adopted 12/76

Subdivision Ordinance in process

Expect to be in compliance with LCDC goals 7/1/78



## OAKLAND

Population: 1,110

Douglas County

Planning Department  
City Hall  
P.O. Box 788  
117 SE 3rd Street  
Oakland, Oregon 97462  
459-4531

# on planning commission - 7  
# on planning staff - 0

Jack D. Smith, Planning Commission Chairman

Comprehensive Plan adopted 2/5/74

Zoning Ordinance adopted 3/13/73

Subdivision Ordinance not adopted

Expect to be in compliance with LCDC goals 1980

## OAKRIDGE

Population: 4,085

Lane County

Planning Department  
P.O. Box 385  
48318 E. First Street  
Oakridge, Oregon 97463  
782-2258

# on planning commission - 7  
# on planning staff - 1

David R. Waffle, Planning Director and Zoning Administrator

Harold Beamer, Citizen Involvement Committee Chairman

Comprehensive Plan adoption expected 4/6/78

Zoning Ordinance adopted 11/21/74

Subdivision Ordinance adopted 11/4/71

Expect to be in compliance with LCDC goals 7/1/78

## ONTARIO

Population: 8,280

Malheur County

Planning Department  
444 SW 4th Street  
Ontario, Oregon 97914  
889-7689

# on planning commission - 9  
# on planning staff - 1

Doug Tietze, Planning Director

Larry Roberts, Zoning Administrator

Paula Becks, Citizen Involvement Committee Chairman

Kenji Yaguchi, Planning Commission Chairman

Comprehensive Plan adoption expected 7/78

Zoning Ordinance adopted 1/3/78

Subdivision Ordinance adoption expected 5/78

In compliance with LCDC goals

## OREGON CITY

Population: 14,100

Clackamas County

Planning Department  
P.O. Box 631  
Oregon City, Oregon 97045  
655-8409

# on planning commission - 9  
# on planning staff - 4

James I. Baily, Planning Director

Howard Klemesen, Citizen Involvement Committee Chairman

Don Williams, Planning Commission Chairman

Comprehensive Plan adopted 1970 - amendments since

Zoning Ordinance adopted 1954 - amendments since

Subdivision Ordinance adopted 1952 - amendments since

Expect to be in compliance with LCDC goals 6/30/79

## PENDLETON

Population: 14,650

Umatilla County

Planning Department  
City Hall  
P.O. Box 190  
Pendleton, Oregon 97801  
276-1811

# on planning commission - 7  
# on planning staff - 2

Edward A. Rhodes, Planning Director and Zoning Administrator  
Joe Lindell, Planning Commission Chairman

Comprehensive Plan adopted 4/15/65  
Zoning Ordinance adopted 5/1/73  
Subdivision Ordinance adopted 9/6/60  
Expect to be in compliance with LCDC goals 1980

## PHOENIX

Population: 1,815

Jackson County

Planning Department  
P.O. Box 327  
Phoenix, Oregon 97535  
535-3524

# on planning commission - 7  
# on planning staff - 1

Richard Stevens, Planning Director  
Barbara Arney, Planning Commission Chairman

Comprehensive Plan being prepared  
Zoning Ordinance adopted 11/18/63  
Subdivision Ordinance adopted 11/15/65

## PHILOMATH

Population: 2,400

Benton County

Planning Department  
P.O. Box 549  
Philomath, Oregon 97370  
929-3501

# on planning commission - 7

Hartley T. Seeger, City Administrator, acts as Planning Director and Zoning Administrator

Sherman Morgan, Planning Commission Chairman

Comprehensive Plan adopted 11/74

Zoning Ordinance adopted 12/22/76

Subdivision Ordinance adopted 11/16/77

Expect to be in compliance with LCDC goals 6/79

## PILOT ROCK

Population: 1,750

Umatilla County

Planning Department  
ECOAC  
P.O. Box 339  
Pendleton, Oregon 97801  
276-6732

# on planning commission - 7

# on planning staff - 1

Henry Markus, Planning Director

Duane Cole, Zoning Administrator

Ann Crump, Citizen Involvement Committee Chairman

William Elfering, Planning Commission Chairman

Comprehensive Plan adopted 6/1/78

Zoning Ordinance adopted 6/1/78

Subdivision Ordinance adopted 6/1/78

Expect to be in compliance with LCDC goals 6/1/78

## PORT ORFORD

Population: 1,065

Curry County

Planning Department  
City Hall  
P.O. Box 318  
Port Orford, Oregon 97465  
332-2111

# on planning commission - 7  
# on planning staff - 2 (county)

Contract with Curry County (Bob Higbe) for planning services  
Tracy Hassett, Planning Commission Chairman

Comprehensive Plan adopted 3/8/77  
Zoning Ordinance adopted 9/13/77  
Subdivision Ordinance adopted 10/8/74  
In compliance with LCDC goals

## PORTLAND

Population: 382,000

Multnomah County

Planning Department  
424 SW Main Street  
Portland, Oregon 97204  
248-4253

# on planning commission - 9  
# on planning staff - 35

Ernest R. Bonner, Planning Director  
Frank Frost, Zoning Administrator  
Julie Nelson, Citizen Involvement Committee Chairman  
Mike Katz, Planning Commission President

Comprehensive Plan adopted 7/80  
Zoning Ordinance adopted 7/1/59  
Subdivision Ordinance adopted 4/78  
Expect to be in compliance with LCDC goals 7/80

## POWERS

Population: 950

Coos County

Planning Department  
James Adamek  
Powers, Oregon  
439-3254

# on planning commission - 18  
# on planning staff - 4

James McCullough, Mayor, acts as Planning Director

James Adamek, Zoning Administrator and Planning Commission Chairman

Zoning Ordinance adopted 12/28/72

## PRAIRIE CITY

Population: 1,120

Grant County

Donald Parker, Planning Commission Chairman

# on planning commission - 8  
# on planning staff - 0

Zoning Ordinance adopted 8/14/72

## PRINEVILLE

Population: 12,100

Crook County

City-County Planning Department  
Courthouse  
Prineville, Oregon 97754  
447-3211

# on planning commission - 7  
# on planning staff - 5  
(includes county)

Dick Brown, Planning Director

Crysti Shoji, Assistant Director/Coordinator

Jim VanVoorhees, Citizen Involvement Committee Chairman

William Greenfield, Planning Commission Chairman

Comprehensive Plan adopted 7/78

Zoning Ordinance adopted 7/78

Subdivision Ordinance adopted 7/78

In compliance with LCDC goals

## RAINIER

Population: 1,930

Columbia County

Planning Department  
P.O. Box A  
Rainier, Oregon 97048  
556-7301

# on planning commission - 7  
# on planning staff - 3

Howard Glazer, AIA, Planning Director

John X. Wittwer, Planning Commission Chairman

Zoning Ordinance adopted 1/17/72

Subdivision Ordinance adopted 11/1/76

Expect to be in compliance with LCDC goals 8/1/78

## REDMOND

Population: 6,250

Deschutes County

Planning Department  
City Hall  
455 S. 7th  
Redmond, Oregon 97756  
548-2148

# on planning commission - 7  
# on planning staff - 1

Lorin Morgan (consultant), Planning Director

Jerry Knippel, Zoning Administrator

James Kincaid, Citizen Involvement Committee Chairman

Lyle Calvert, Planning Commission Chairman

Comprehensive Plan adopted 10/23/73

Zoning Ordinance adopted 7/12/73

Subdivision Ordinance adopted 5/25/71

Expect to be in compliance with LCDC goals 7/79

## REEDSPORT

Population: 4,850

Douglas County

Planning Department  
City Hall  
451 Winchester Avenue  
P.O. Box 358  
Reedsport, Oregon 97467  
271-3115

# on planning commission - 7  
# on planning staff - 1

Edward Wynes, Planning Director and Zoning Administrator

Thomas E. Hedgepeth, Planning Commission Chairman

Comprehensive Plan adopted 1973

Zoning Ordinance adopted 3/12/73

Subdivision Ordinance adopted 6/12/61

Expect to be in compliance with LCDC goals spring 1979

## RICHLAND

Population: 190

Baker County

Planning Department  
Courthouse  
Baker, Oregon 97870  
523-6414

William Quigley, Planning Director

## RIDDLE

Population: 1,220

Douglas County

Planning Department  
P.O. Box 143  
Riddle, Oregon 97469  
874-2571

# on planning commission - 5  
# on planning staff - 0

William B. Strobridge, Planning Commission Chairman

Comprehensive Plan adopted 6/75

Zoning Ordinance adopted 7/74

Subdivision Ordinance adopted 4/69

Expect to be in compliance with LCDC goals 9/79



## RIVERGROVE

Population: 330

Clackamas & Washington Counties

Planning Department  
City of Rivergrove  
P.O. Box 1104  
Lake Oswego, Oregon  
639-3369 (City Recorder)

# on planning commission - 7  
# on planning staff - 1 consultant

Edith Stark, Citizen Involvement Committee Chairman & Planning Commission  
Chairman

Jon Mathis, Vice Chairman of Planning Commission

Comprehensive Plan adopted 10/8/73

Zoning Ordinance adopted 6/10/74

## ROCKAWAY

Population: 985

Tillamook County

Planning Department  
P.O. Box 35  
Rockaway, Oregon 97136  
355-2291

# on planning commission - 7  
# on planning staff - 0

Clatsop-Tillamook Intergovernmental Council acts as Planning Director

Eugene Helgerson, Planning Commission Chairman

Comprehensive Plan adopted 10/77

Zoning Ordinance adopted 1/78

Expect to be in compliance with LCDC goals 7/78

## ROGUE RIVER

Population: 1,215

Jackson County

Planning Department  
P.O. Box Q  
Rogue River, Oregon 97537  
582-0856

# on planning commission - 7  
# on planning staff - 1

E. L. Bacon, Jr., Planning Director and Zoning Administrator

J. Lyons, Citizen Involvement Committee Chairman and Planning Commission Chairman

Zoning Ordinance adopted 1967

Subdivision Ordinance adopted 1970

Expect to be in compliance with LCDC goals 6/30/78

## ROSEBURG

Population: 17,500

Douglas County

Planning Department  
900 SE Douglas Avenue  
Roseburg, Oregon 97470  
672-7701, Ext. 41

# on planning commission - 7  
# on planning staff - 1

Peter T. Donahue, Planning Director and Zoning Administrator (acting)

Lois Allen, Planning Commission

Comprehensive Plan adopted 12/9/74

Zoning Ordinance adopted 1/68 - revised 1973, 1975, 1976

Subdivision Ordinance adopted 11/65

Expect to be in compliance with LCDC goals 12/80

## RUFUS

Population: 410

Sherman County

Planning Department  
Mid-Columbia Economic Development District  
502 East Fifth, Annex B  
The Dalles, Oregon 97058  
296-2266

# on planning commission - 0  
# on planning staff - 1

Daniel Durow, Planning Director

Merle Eldridge, Mayor, acts as Citizen Involvement Committee Chairman

Comprehensive Plan adopted 6/20/78

Zoning Ordinance adopted 6/20/78

Subdivision Ordinance adopted 6/20/78

Expect to be in compliance with LCDC goals 7/1/78

## ST. HELENS

Population: 7,608

Columbia County

Planning Department  
P.O. Box 278  
St. Helens, Oregon 97051  
397-3373

# on planning commission - 7  
# on planning staff - 1

Howard Cutler, City Planner

George Shelley, Zoning Administrator

Joseph Schultz, Planning Commission Chairman

Comprehensive Plan adopted 2/21/78

Zoning Ordinance adopted 3/21/78

Subdivision Ordinance adopted 3/7/78

ST. PAUL

Population: 380

Marion County

Planning Department  
Senator Hotel  
Salem, Oregon 97301

Pam Brown, Planning Director

Planning done by Marion County Planning Department

Comprehensive Plan adopted 6/27/78

Zoning Ordinance adopted 6/27/78

Subdivision Ordinance adopted 6/27/78

In compliance with LCDC goals

SALEM

Population: 80,100

Marion County

Planning Division  
Dept. of Community Development  
555 Liberty Street, SE  
Salem, Oregon 97301  
588-6173

# on planning commission - 7  
# on planning staff - 20

Kenneth P. Battaile, Planning Director

Ray Sturtz, Zoning Administrator

Sharon Fatland, Citizen Involvement Committee Chairman

Jane Cummins, Planning Commission Chairman

Comprehensive Plan adopted 8/73

Zoning Ordinance adopted 1/68

Subdivision Ordinance adopted 1974

Expect to be in compliance with LCDC goals 9/78

## SANDY

Population: 2,485

Clackamas County

Planning Department  
City of Sandy  
Sandy City Hall  
P.O. Box 116  
Sandy, Oregon 97055  
668-5533

# on planning commission - 7  
# on planning staff - 3 from  
consultant's office

Eldon E. Edwards, Planning Consultants, acts as Planning Director  
Bill Salisbury, Citizen Involvement Committee Chairman  
Kenneth Hallgren, Planning Commission Chairman

Comprehensive Plan adopted 8/73

Zoning Ordinance adopted 1/6/75

Subdivision Ordinance adopted 4/1/74

Expect to be in compliance with LCDC goals 6/30/78

## SCAPPOOSE

Population: 3,300

Columbia County

Planning Department  
P.O. Drawer "P"  
Scappoose, Oregon 97056  
543-7146

# on planning commission - 7

Peter K. Williamson, Planning Director and Zoning Administrator  
Bruce Hugo, Planning Commission Chairman

Comprehensive Plan adopted 1966

Zoning Ordinance adopted 1961

Subdivision Ordinance adopted 1968

Expect to be in compliance with LCDC goals 4/79

## SCOTTS MILLS

Population: 270

Marion County

Planning Department  
P.O. Box 11  
Scotts Mills, Oregon 97375  
873-2721

# on planning commission - 7

Virgil Hicks, Planning Director  
Robert Glasscock, Citizen Involvement Committee Chairman  
Virgil Hicks, Planning Commission Chairman

Comprehensive Plan adopted 6/16/78  
Zoning Ordinance adopted 6/16/78  
Subdivision Ordinance adopted 6/16/78  
In compliance with LCDC goals

## SEASIDE

Population: 4,750

Clatsop County

Planning Department  
851 Broadway  
Seaside, Oregon 97138  
738-5511

# on planning commission - 9  
# on planning staff - 1 part-time  
consultant

James D. Hurd, Zoning Administrator  
Pete Anderson, Citizen Involvement Committee Chairman and Planning Commission  
Chairman

Comprehensive Plan adopted 1976  
Zoning Ordinance adopted 1973  
Subdivision Ordinance adopted 1975  
Expect to be in compliance with LCDC goals 6/79

## SHERWOOD

Population: 2,160

Washington County

Planning Department  
90 Park Street  
Sherwood, Oregon 97140  
625-5522

# on planning commission - 7  
# on planning staff - 2

Todd Dugdale, Planning Director

Gene Stewart, Citizen Involvement Committee Chairman

Brian Yerka, Planning Commission Chairman

Zoning Ordinance adopted 1970

Subdivision Ordinance adopted 1974

Expect to be in compliance with LCDC goals 7/79

## SILETZ

Population: 820

Lincoln County

Planning Department  
P.O. Box 318  
Siletz, Oregon 97380  
444-2521

# on planning commission - 6  
# on planning staff - 0

Leroy Yoder, Planning Director

Use Lincoln County Zoning Administrator (Richard Stolte)

Vernon Castle, Citizen Involvement Committee Chairman

Leroy Yoder, Planning Commission Chairman

Zoning Ordinance adopted 3/25/75

Subdivision Ordinance adopted 2/14/77

## SILVERTON

Population: 5,381

Marion County

Planning Department  
City Hall  
306 S. Water  
Silverton, Oregon 97381  
873-5321

# on planning commission - 7  
# on planning staff - 1

Karsten Sjoli, Building Officer

Don Lowe, Citizen Involvement Committee Chairman and Planning Commission Chairman

Comprehensive Plan adopted 1971

Zoning Ordinance adopted 1964

Subdivision Ordinance adopted 1975

Expect to be in compliance with LCDC goals 4/79

## SISTERS

Population: 775

Deschutes County

Planning Department  
P.O. Box 37  
Sisters, Oregon 97759  
549-6022

# on planning commission - 7  
# on planning staff - 1

Lorin Morgan, Planning Director

David Clemens, Planning Commission Chairman

Comprehensive Plan adopted 7/74

Zoning Ordinance adopted 4/73

Subdivision Ordinance adopted 8/76

Expect to be in compliance with LCDC goals 11/78



## SPRINGFIELD

Population: 38,500

Lane County

Planning Department  
4th and North A Streets  
Springfield, Oregon 97477  
726-3759

# on planning commission - 7  
# on planning staff - 2  
plus 2 LCDC positions

Richard Johnson, Planning Director and Zoning Administrator

Rob Adams, Citizen Involvement Committee Chairman

Richard Gassman, Planning Commission Chairman

Comprehensive Plan adopted 4/3/72

Zoning Ordinance adopted 7/27/70

Subdivision Ordinance adopted 12/16/74

Expect to be in compliance with LCDC goals 6/30/80

## STANFIELD

Population: 1,080

Umatilla County

Planning Department  
City of Stanfield  
P.O. Box 445  
Stanfield, Oregon 97875  
449-3831

# on planning commission - 5  
# on planning staff - 0

Henry Markus, Planning Director

Comprehensive Plan adopted 6/78

Zoning Ordinance adopted 6/78

Subdivision Ordinance adopted 6/78

In compliance with LCDC goals

## STAYTON

Population: 4,125

Marion County

Planning Department  
City Hall  
362 N. Third  
Stayton, Oregon 97383  
769-3425

# on planning commission - 9  
# on planning staff - 0

Steven R. Schwindt, Citizen Involvement Committee Chairman  
Wes Smith, Planning Commission Chairman

Comprehensive Plan adopted 5/19/73  
Zoning Ordinance adopted 6/72  
Subdivision Ordinance adopted 1/74  
Expect to be in compliance with LCDC goals 6/78

## SUBLIMITY

Population: 940

Marion County

Planning Department  
P.O. Box 146  
Sublimity, Oregon 97385  
769-5475

# on planning commission - 7  
# on planning staff - 0

Leonard Myers, Planning Commission President  
Planning Commission acts as Zoning Administrator

Comprehensive Plan in process  
Zoning Ordinance adopted 7/20/64  
Subdivision Ordinance adopted 8/9/76  
Expect to be in compliance with LCDC goals 6/30/78

## SUMPTER

Population: 130

Baker County

Planning Department  
P.O. Box 518  
Sumpter, Oregon 97877  
894-2314

# on planning commission - 5

City Recorder acts as Zoning Administrator  
Don Adcock, Citizen Involvement Committee Chairman  
LaVon D. Cullum, Planning Commission Chairman

Comprehensive Plan not completed  
Zoning Ordinance adopted 9/7/72  
Subdivision Ordinance adopted 4/16/74  
In compliance with LCDC goals

## SWEET HOME

Population: 7,100

Linn County

Planning Department  
City Hall  
1140 12th Avenue  
Sweet Home, Oregon 97386  
367-5128

# on planning commission - 7  
# on planning staff - 1

R. Scott Pemble, Planning Director  
Leon Overbay, Zoning Administrator  
Dick Meyers, Citizen Involvement Committee Chairman & Planning Commission Chairman

Comprehensive Plan adopted 7/31/72  
Zoning Ordinance adopted 12/10/74 - amended 7/26/77  
Subdivision Ordinance adopted 2/28/78  
Expect to be in compliance with LCDC goals 6/80

## TALENT

Population: 2,615

Jackson County

Planning Department  
City of Talent  
P.O. Box 445  
Talent, Oregon 97540  
535-2015

# on planning commission - 9  
# on planning staff - 3

David M. Doerter, Planning Director

Karen Sinclair, Zoning Administrator

Robert Underhill, Citizen Involvement Committee Chairman and Planning Commission Chairman

Comprehensive Plan adopted 11/76

Zoning Ordinance adopted 12/64

Subdivision Ordinance adopted 10/65

Expect to be in compliance with LCDC goals 11/79

## TANGENT

Population: 548

Linn County

Linn County Planning Department  
Linn County Courthouse  
Albany, Oregon 97321  
967-3816

# on planning commission - 9  
# on planning staff - 2

David Schmidt, Planning Director

Jeffery Tross, Zoning Administrator

Joe Jacob, Citizen Involvement Committee Chairman and Planning Commission Chairman

Comprehensive Plan adopted 1974

Zoning Ordinance adopted 12/22/75

Expect to be in compliance with LCDC goals 9/79

## THE DALLES

Population: 11,135

Wasco County

Planning Department  
313 Court Street  
The Dalles, Oregon 97058  
296-5481

# on planning commission - 7  
# on planning staff - 3

Paul C. Smith, Planning Director  
Todd Forrest, Citizen Involvement Committee Chairman  
Bill Booth, Planning Commission Chairman

Comprehensive Plan adopted 12/6/76  
Zoning Ordinance adopted 1/16/48  
Subdivision Ordinance adopted 6/16/58  
Expect to be in compliance with LCDC goals 8/78

## TIGARD

Population: 12,000

Washington County

Planning Department  
P.O. Box 23397  
Tigard, Oregon 97223  
639-4171

# on planning commission - 9  
# on planning staff - 7

Dick Bolen, Planning Director  
John Laws, Zoning Administrator  
Allan Popp, Planning Commission Chairman

Comprehensive Plan adopted 1971  
Zoning Ordinance adopted 1963  
Subdivision Ordinance adopted 1963  
Expect to be in compliance with LCDC goals 3/1/79

## TILLAMOOK

Population: 4,300

Tillamook County

Planning Department  
City Hall  
1902 Third Street  
Tillamook, Oregon 97141  
842-7797

# on planning commission - 7  
# on planning staff - 1

Wallace Roghair, Planning Director and Zoning Administrator

Sherry Myers, Citizen Involvement Committee Chairman

James Voetberg, Planning Commission Chairman

Comprehensive Plan adopted 2/20/73

Zoning Ordinance adopted 1/6/75

Subdivision Ordinance adopted 12/6/77

Expect to be in compliance with LCDC goals 7/1/79

## TOLEDO

Population: 3,270

Lincoln County

Planning Department  
P.O. Box 220  
Toledo, Oregon 97391  
336-2247

# on planning commission - 7  
# on planning staff - contract  
for services

City Manager acts as Planning Director & Zoning Administrator

Don Broyles, Citizen Involvement Committee Chairman and Planning Commission Chairman

Comprehensive Plan adopted 1968

Zoning Ordinance adopted 1961

Subdivision Ordinance adopted 1967

Expect to be in compliance with LCDC goals 7/1/80

## TROUTDALE

Population: 2,991

Multnomah County

Planning Department  
104 SE Kibling  
Troutdale, Oregon 97060  
665-5175

# on planning commission - 9  
# on planning staff - 2 plus  
consulting engineer, planners,  
draftsman, and parks coordinator

Ed Murphy, Planning Director

Jeff Davis, Zoning Administrator

Robert Johnson, Citizen Involvement Committee Chairman

Charles Pulliam, Planning Commission Chairman

Comprehensive Plan adopted 8/77

Zoning Ordinance adopted 7/78

Subdivision Ordinance adopted 7/78

Expect to be in compliance with LCDC goals 8/78

## TUALATIN

Population: 4,900

Washington County

Planning Department  
18880 SW Martinazzi Avenue  
Tualatin, Oregon  
638-6891

# on planning staff - 2  
# on planning advisory  
committee - 15  
# on Urban Renewal Advisory  
committee - 15

Winslow Brooks, Community Development Director

Dave Prescott, City Planner

William Greer, Jr., Citizen Involvement Committee Chairman

Larry Bolton, Planning Advisory Committee Chairman

William Greer, Jr., Urban Renewal Advisory Committee Chairman

Comprehensive Plan adopted 11/21/72

Zoning Ordinance adopted 7/31/63

Subdivision Ordinance adopted 4/13/70

Expect to be in compliance with LCDC goals 6/30/79

## TURNER

Population: 1,230

Marion County

Planning Department  
P.O. Box 405  
Turner, Oregon 97392  
743-2155

# on planning commission - 7  
# on planning staff - 2 from  
COG

Mid Willamette Valley Council of Governments acts as Planning Director

T. J. Schaffer, Citizen Involvement Committee Chairman

John Mickey, Planning Commission Chairman

Zoning Ordinance adopted 7/23/70

Subdivision Ordinance adopted 3/13/73

Expect to be in compliance with LCDC goals 7/1/78

## UKIAH

Population: 320

Umatilla County

Planning Department  
Box 128  
Ukiah, Oregon 97880  
427-3281

# on planning commission - 4  
# on planning staff - 0

Dave Price, Planning Director, Citizen Involvement Committee Chairman  
and Planning Commission Chairman

Comprehensive Plan adopted 2/7/78

Zoning Ordinance not completed

Subdivision Ordinance not completed

In compliance with LCDC goals



## UMATILLA

Population: 3,100

Umatilla County

Planning Department  
P.O. Box 130  
Umatilla, Oregon 97882  
922-3226

# on planning commission - 7  
# on planning staff - 0

Jack Palmer, City Administrator, acts as Planning Director & Zoning Administrator

Lon C. Reed, Citizen Involvement Committee Chairman

Marilyn Sorenson, Planning Commission Chairman

Comprehensive Plan adopted 12/19/77

Zoning Ordinance adopted 12/28/77

Subdivision Ordinance adopted 12/28/77

In compliance with LCDC goals

## UNION

Population: 2,000

Union County

Planning Department  
P.O. Box 529  
Union, Oregon 97883  
562-5197

# on planning commission - 9  
# on planning staff - 0

Floyd Parrott, Planning Director & Zoning Administrator

Jerry Gildemeister, Planning Commission Chairman

Comprehensive Plan adopted 8/26/76

Zoning Ordinance adopted 7/7/69 - being revised

Subdivision Ordinance adopted 1/3/77

Expect to be in compliance with LCDC goals 7/1/78

## VALE

Population: 1,850

Malheur County

Planning Department  
252 B Street, W  
Vale, Oregon 97918  
473-3203

# on planning commission - 7  
# on planning staff - 6

William Clark, Planning Director & Zoning Administrator  
Jim Beiker, Planning Commission Chairman

Zoning Ordinance adopted 1967  
Subdivision Ordinance adopted 2/78  
In compliance with LCDC goals

## VENETA

Population: 2,240

Lane County

Planning Department  
P.O. Box 458  
Veneta, Oregon 97487  
935-2191

# on planning commission - 5  
# on planning staff - 1

Sue Hallett, Planning Director & Zoning Administrator  
City Council serves as Citizen Involvement Committee, Richard Gutman, Mayor  
Scott Taylor, Planning Commission Chairman

Comprehensive Plan adopted 12/77

## WALLOWA

Population: 950

Wallowa County

Planning Department  
P.O. Box 1  
Wallowa, Oregon 97885  
886-2422

# on planning commission - 6  
# on planning staff - 0

Joe Town, Planning Director & Planning Commission Chairman  
Leon Fisher, Mayor, acts as Zoning Administrator  
John Victor, Citizen Involvement Committee Chairman

Comprehensive Plan not yet adopted

Zoning Ordinance adopted 6/28/77

Subdivision Ordinance adopted 3/8/77

Expect to be in compliance with LCDC goals 6/30/78

## WARRENTON

Population: 2,300

Clatsop County

Planning Department  
P.O. Box 250  
147 SW Main  
Warrenton, Oregon 97146  
861-2233

# on planning commission - 7  
# on planning staff - 1

Don Lampi, Planning Director & Zoning Administrator  
Fred Andrus, Citizen Involvement Committee Chairman and Planning Commission Chairman

Comprehensive Plan adopted 8/74 - amended 1/76

Zoning Ordinance adopted 4/21/75 - amended 11/9/76

Subdivision Ordinance adopted 7/21/75

Expect to be in compliance with LCDC goals 6/1/79

## WASCO

Population: 412

Sherman County

Planning Department  
City of Wasco  
P.O. Box 382  
Wasco, Oregon 97065  
442-5515

# on planning commission - 6  
plus mayor  
# on planning staff - 1

Vernon Root, Mayor, acts as Planning Director, Zoning Administrator,  
and Planning Commission Chairman

Robert Nisbet, Citizen Involvement Committee Chairman

Comprehensive Plan adopted 6/29/78

Expect to be in compliance with LCDC goals 8/1/78

## WEST LINN

Population: 10,355

Clackamas County

Planning Department  
City Hall  
West Linn, Oregon 97068  
654-4261

# on planning commission - 7  
# on planning staff - 0

Clifford L. Sanders, City Administrator, acts as Planning Director  
and Zoning Administrator

Joseph Koffend, Citizen Involvement Committee Chairman

Larry McIntyre, Planning Commission Chairman

Comprehensive Plan adopted 9/18/74

Zoning Ordinance adopted 11/10/71

Subdivision Ordinance adopted 10/1/74

Expect to be in compliance with LCDC goals 6/78

## WESTON

Population: 625

Umatilla County

Planning Department  
City of Weston  
P.O. Box 427  
Weston, Oregon 97886  
566-3313

# on planning commission - 7  
# on planning staff - 0

Ken Dauble, Citizen Involvement Committee Chairman & Planning Commission  
Chairman

Comprehensive Plan adopted 5/18/78

Zoning Ordinance adopted 3/2/77

In compliance with LCDC goals

## WHEELER

Population: 292

Tillamook County

Planning Department  
City of Wheeler  
P.O. Box 177  
Wheeler, Oregon 97147  
368-5767

# on planning commission - 7  
# on planning staff - 1 from  
CTIC

Planning Commission designated as Citizen Involvement Committee

Richard A. Vachio, Planning Commission Chairman

Comprehensive Plan adopted 2/19/74

Zoning Ordinance adopted 10/19/76

Subdivision Ordinance adopted 4/19/77

Expect to be in compliance with LCDC goals 7/79

## WILLAMINA

Population: 1,440

Yamhill & Polk Counties

Yamhill County Planning Department  
Yamhill County Courthouse  
McMinnville, Oregon  
472-9371

# on planning commission - 9

Contract with Yamhill County Planning Department for planning services

Henry Green, Planning Commission Chairman

Comprehensive Plan adopted 3/9/72

Zoning Ordinance adopted 12/13/73

Subdivision Ordinance adopted 12/11/75

## WILSONVILLE

Population: 2,040

Clackamas & Washington Counties

Planning Department  
P.O. Box 220  
Wilsonville, Oregon 97070  
682-1011

# on planning commission - 7

# on planning staff - 2

Edward F. Davis, City Administrator/Planner, acts as Planning Director

Robert H. Mahoney, Planner, acts as Zoning Administrator

Dorothy Lehan, Citizen Involvement Committee Chairman

Richard Drew, Planning Commission Chairman

Comprehensive Plan adopted 12/21/75

Zoning Ordinance adopted 6/1/71

Subdivision Ordinance adopted 2/8/71

Expect to be in compliance with LCDC goals 10/79

## WINSTON

Population: 3,120

Douglas County

Planning Department  
P.O. Box 750  
Winston, Oregon 97496  
679-6739

# on planning commission - 7  
# on planning staff - 0

Dale A. Ennor, City Administrator

Gary Spellman, Citizen Involvement Committee Chairman & Planning Commission Chairman

Comprehensive Plan adopted 11/10/75

Zoning Ordinance adopted 12/2/72

Subdivision Ordinance adopted 9/5/72

Expect to be in compliance with LCDC goals 1979

## WOODBURN

Population: 10,500

Marion County

Planning Department  
City Hall  
270 Montgomery Street  
Woodburn, Oregon 97071  
981-7111

# on planning commission - 8  
# on planning staff - 2

John Fregonese, Planning Director & Zoning Administrator

Dave Cagley, Citizen Involvement Committee Chairman and Planning Commission Chairman

Comprehensive Plan adopted 1964 - revised 1968 and 1973

Zoning Ordinance adopted 1957 - revised 1973

Subdivision Ordinance adopted 1963 - revised 1976

Expect to be in compliance with LCDC goals 8/78

## YACHATS

Population: 500

Lincoln County

No Planning Department  
City of Yachats  
P.O. Box 67  
Yachats, Oregon 97498  
547-3565

# on planning commission - 9  
# on planning staff - 0

Lester Ruben, Citizen Involvement Committee Chairman

Pamela Wise, Planning Commission Chairman

Comprehensive Plan in progress

Zoning Ordinance in progress

Subdivision Ordinance in progress

Expect to be in compliance with LCDC goals 12/78

## YAMHILL

Population: 615

Yamhill County

Planning Department  
P.O. Box 26  
Yamhill, Oregon  
662-3511

# on planning commission - 7

County Planning Commission acts as Planning Director

Walter Larkin, Planning Commission Chairman

Comprehensive Plan adopted 10/12/77

Zoning Ordinance adopted 12/13/72

Subdivision Ordinance adopted 5/11/77

In compliance with LCDC goals



## YONCALLA

Population: 770

Douglas County

Planning Department  
City of Yoncalla  
P.O. Box 508  
Yoncalla, Oregon 97499  
849-2152

# on planning commission - 7

Tony Brennan, Planning Commission Chairman

Comprehensive Plan not completed

Zoning Ordinance adopted 1/77

Subdivision Ordinance adopted 3/22/78

In compliance with LCDC goals

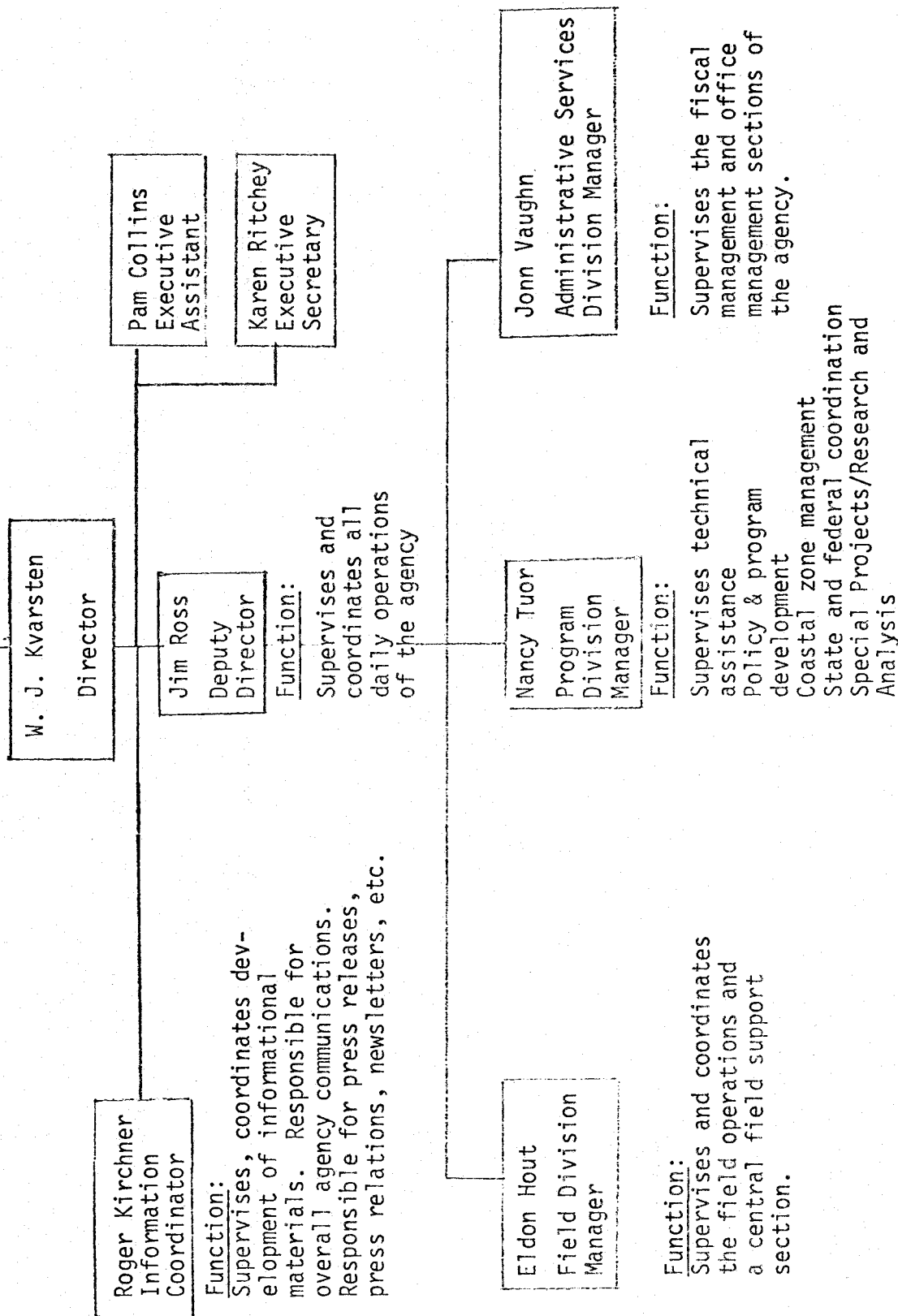
## LAND CONSERVATION AND DEVELOPMENT COMMISSION

At the state level the comprehensive planning programs are organized under a seven member commission appointed by the Governor. Names and addresses for the commissioners are given below. The commission is responsible for overall policy and direction of the state program. The Department of Land Conservation and Development is the agency that administers the program. An organizational chart and list of contact persons within the department are included on the following pages.

<u>Commissioner</u>	<u>Addresses and Telephone Numbers</u>	
	<u>Business</u>	<u>Home</u>
Dorothy Anderson (homemaker)		939 E. 21st Ave. Eugene, OR 97405 345-2820
J. W. (Bud) Forrester (newspaperman)	P.O. Box 210 Astoria, OR 97103 325-3211	1274 11th St. Astoria, OR 97103 325-4184
Richard Gervais (businessman)	Deschutes Pine Sales 389-5000	437 Drake Road Bend, OR 97701 382-5302
Lorin Jacobs (architect)	2950 Barnett Rd. Medford, OR 97501 779-5237	1256 Eureka Circle Medford, OR 97501
John Mosser (attorney)	Wood, Wood, Tatum, Mosser & Brooke Attorneys at Law 1505 Standard Plaza Portland, OR 97204 224-5430	8521 SW Leahy Rd. Portland, OR 97225 292-0914
Anne W. Squier (biologist)		5647 SE 38th Portland, OR 97202
Dennis Fuller (judge)	Baker Co. Courthouse Baker, OR 97814 523-6414	2580 17th St. Baker, OR 97814 523-4173

# Land Conservation and Development Commission

Dick Gervais, Chairman



# DEPARTMENT OF LAND CONSERVATION AND DEVELOPMENT

Main Office, 1175 Court Street, Salem, Oregon

Main Switchboard and Information	378-4926
Toll Free Information	(800) 452-7813

Director	W. J. Kvarsten	378-8644
Deputy Director	James F. Ross	4928
Executive Secretary	Karen Ritchey	4215
Executive Assistant	Pam Collins	8645
Information Coordinator	Roger Kirchner	4929
Library	Audra Oliver & Dee Iltis	2980
Field Division Manager	Eldon Hout	4933
Compliance Team Supervisor	Jim Knight	2973
Compliance Specialist	Tom Golden	8646
Compliance Specialist	Ron Eber	5454
Compliance Specialist	Lloyd Chapman	4932
Program Division Manager	Nancy Tuor	4097
Coastal Management Program Supervisor	Neal Coenen	5453
Coastal Specialist	Bob Cortright	2977
Coastal Specialist	Jon Christenson	2979
Landsat Coordinator	Kenneth Hansen	2978
Research & Policy Division Supervisor	Dick Mathews	2976
State Agency Coordination	Brent Lake	4098
Appeals Coordinator	Ed Rochette	8354
Administrative Services Division Manager	John Vaughn	5881
Accounting	Steve Free	8067
Personnel	Don Poitras	5452
Support Supervisor	Sandra Prather	2573
Word Processing	Karen Minns & Linda Johannes	4931
Appeals	Patty Cleary	8354/4095

## Regional Offices:

Field Representative (Salem)	Craig Greenleaf	378-4921
Field Representative (La Grande)	James Kennedy	963-2171 Ext. 344
Field Representative (Medford)	Mel Lucas	
Field Representatives (Newport)	Gary Gustafson (North Coast) Glen Hale (South Coast)	
Field Representative (Portland)	Linda MacPherson	221-1646

## STATE ADMINISTRATIVE DISTRICTS

(Councils of Government)

District #1: Clatsop-Tillamook Intergovernmental Council  
P.O. Box 488  
Cannon Beach, Oregon 97110  
436-1156

Jack Lesch, Director  
No. of staff - 12

District #2: Columbia Region Association of Governments  
527 SW Hall  
Portland, Oregon 97201  
221-1646

Denton Kent, Director

District #3: Mid-Willamette Valley Council of Governments  
400 Senator Building  
220 High Street, NE  
Salem, Oregon 97301  
588-6177

Alan H. Hershey, Director  
No. of staff - 68

District #4: Oregon District 4 Council of Governments  
460 SW Madison, #7  
Corvallis, Oregon 97330  
757-6851

William Hagman, Director  
No. of staff - 9

District #5: Lane Council of Governments  
125 E. 8th Avenue  
Eugene, Oregon 97401  
687-4283

Tom Jenkinson, Director  
No. of staff - 43

District #6: Umpqua Regional Council of Governments  
Room 101, Courthouse  
Roseburg, Oregon 97470  
672-3311, Ext. 233

Paul Howard, Director  
No. of staff - 5

- District #7: Coos-Curry Council of Governments  
P.O. Box 647  
1975 McPherson  
North Bend, Oregon 97459  
756-2563  
Sandra Diedrich, Director  
No. of staff: 12 full-time, 5 part-time  
11 temporary (full-time)
- District #8: Rogue Valley Council of Governments  
33 N. Central Avenue  
Suite 211  
Medford, Oregon 97501  
779-7555  
Richard T. Howsley, Director  
No. of staff - 15
- District #9: Mid-Columbia Economic Development District  
502 East Fifth  
Courthouse Annex B  
The Dalles, Oregon 97058  
296-2266  
John Forland, Director  
No. of staff: 27
- District 10: Central Oregon Intergovernmental Council  
P.O. Box 575  
Redmond, Oregon 97756  
548-8163  
Denny Newell, Director  
No. of staff - 8
- District 11: No longer operating as a COG
- District 12: East Central Oregon Association of Counties  
920 SW Frazer  
P.O. Box 339  
Pendleton, Oregon 97801  
276-6732  
Wayne L. Schwandt  
No. of staff: 40
- District 13: Blue Mountain Intergovernmental Council  
Wallowa County Courthouse  
Enterprise, Oregon 97828  
426-4343  
John Beck, Coordinator

District # 14: Ida-Ore Regional Planning & Development Association, Inc.  
P.O. Box 311  
Weiser, Idaho 83672

Barton F. Bailey, Executive Director

## PROFESSIONAL ASSOCIATIONS

### American Institute of Planners, Oregon Chapter

Richard Ragatz, President  
3660 Donald Street  
Eugene, Oregon 97405  
686-3674 or 686-3635

### Association of Oregon Counties

1201 Court Street, NE  
P.O. Box 12729  
Salem, Oregon 97309  
585-8351

### League of Oregon Cities

1201 Court Street, NE  
P.O. Box 928  
Salem, Oregon 97301  
588-6466



## OTHER DIRECTORIES

### Oregon Blue Book

Secretary of State  
Salem, Oregon

Published biennially

### The Conservation Directory

National Wildlife Federation  
1412 16th Street, NW  
Washington, D.C. 20036

### Environment: A List

Extension Business Office (Stockroom)  
Oregon State University Extension Service  
Corvallis, Oregon 97331  
754-2755

Cost: \$3.00

### 1978 Roster of Oregon Planners

Richard Ragatz, AIP  
President, Oregon Chapter  
American Institute of Planners  
3660 Donald Street  
Eugene, Oregon 97405  
686-3674 or 686-3635

Cost: \$5.00

### Directory of Natural Resource Planning Agencies

Pacific Northwest Region  
Volume I - Regional Agencies  
Volume II - State of Oregon

Urban and Rural Lands Committee  
Pacific Northwest River Basins Commission  
P.O. Box 908  
Vancouver, Washington 98660  
(206) 694-2581 or (503) 285-0467