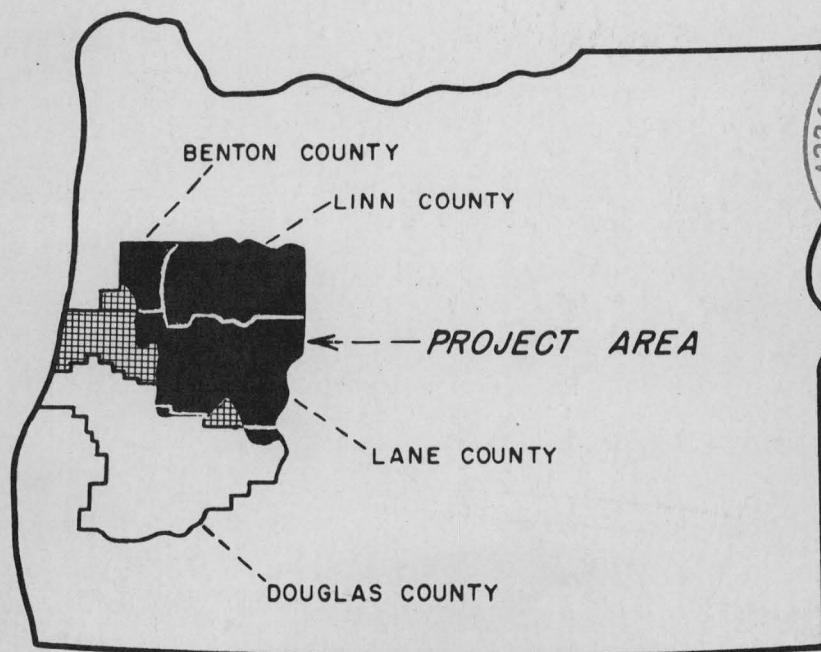


C107  
57  
07

# UPPER WILLAMETTE Resource Conservation & Development Project

1969

## ANNUAL WORK PLAN





## UPPER WILLAMETTE

R esource

e nservation

& D evelopment Project

954 13th Avenue, West  
EUGENE, OREGON 97402

### *Acknowledgement*


This is the fourth Annual Work Plan to be developed for our Upper Willamette Resource Conservation & Development Project, and I am pleased to be able to present it for your review and consideration.

This Project Plan has been developed by our seven Resource Committees and includes the objectives and goals for each of the committees for the year ahead. It was approved at a special meeting on February 25 that combined the business of the January scheduled quarterly Executive Board and annual meetings.

The Plan outlines 12 immediate or 3-year goals, 5 of which have been completed with all others under way at present. Thirty-one additional Project Measures of significance to the resource development of the Project Area have been developed. In all, 153 Project Measures have been established for project action. Installation is underway for 37, and 63 have been completed.

Since our RC&D Project is a local people's program, I would like to stress the importance of the participation of local citizens on the various resource committees, and to express my appreciation to all those who have served so faithfully so far in the program. I also wish to thank the assisting agencies for their invaluable cooperation in the planning and carrying out of our projects.

I would like to call attention to our new Constitution and Bylaws, and the new Organization Chart which is a result of their adoption.

  
President  
Upper Willamette RC&D Project

# ANNUAL WORK PLAN

1969

## CONTENTS

	<u>Page</u>
Foreword . . . . .	1
Organization Chart . . . . .	2
Project Organization and Operation . . . . .	3
Agencies Represented . . . . .	5
Resource Committees - Objectives and Goals	
Agriculture Committee . . . . .	6
Countryside Beautification Committee . . . . .	8
Recreation Committee . . . . .	9
Town & Community Planning Committee . . . . .	11
Water Development Committee . . . . .	13
Wildlife Committee . . . . .	15
Woodland Committee . . . . .	17
Resource Booklets & Studies . . . . .	20
1969 Resource Goals . . . . .	21
Constitution . . . . .	24
Bylaws . . . . .	30

## FOREWORD

The Upper Willamette Resource Conservation & Development Project is an over-all program for accelerating the resource development of the area, and helps coordinate the activities of the many groups, agencies and organizations working in the field.

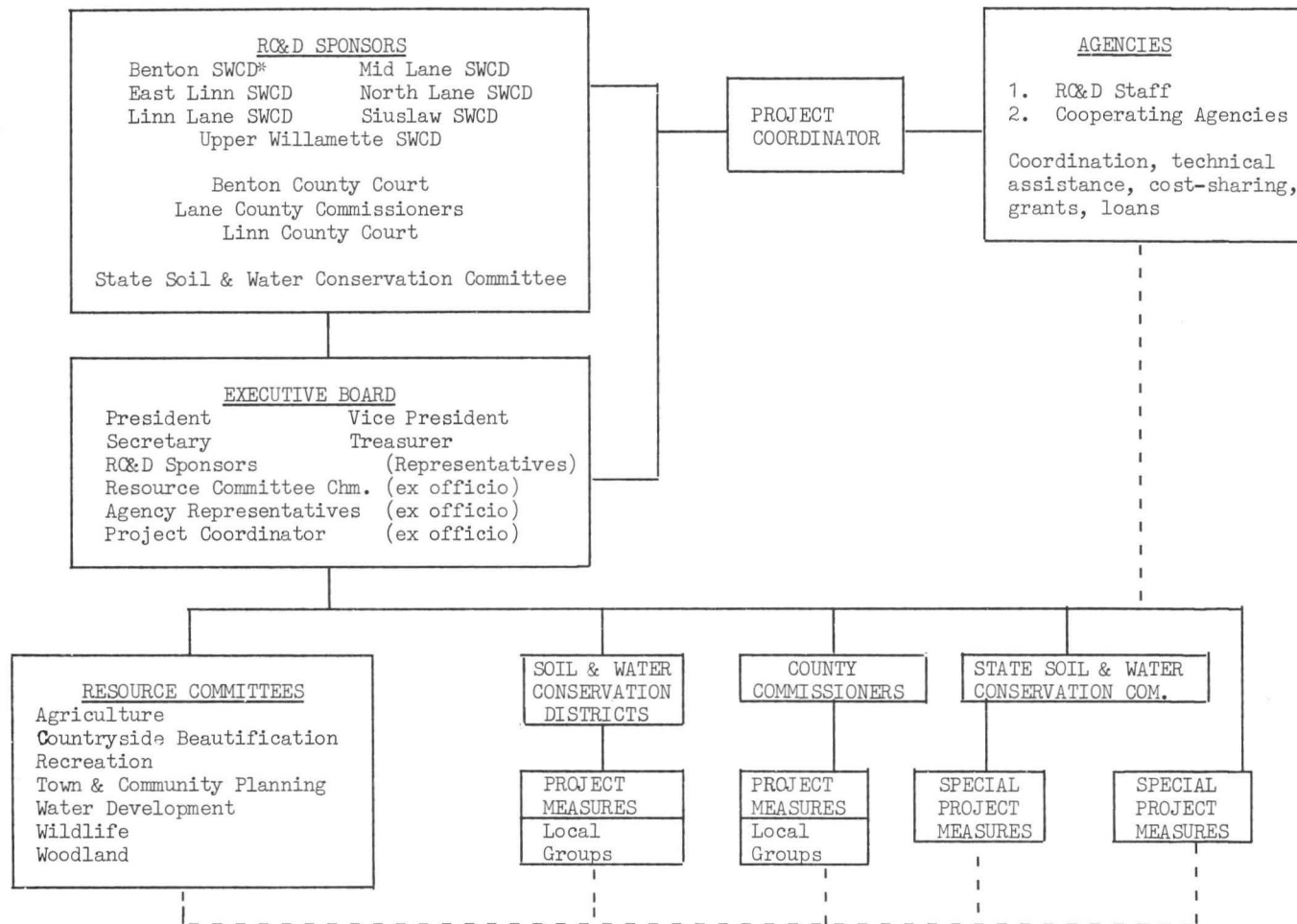
An "action" program initiated and directed by local people, it includes all of Linn County, about three-fourths of Lane and Benton counties, and a small portion of Douglas County. The terrain of this area, covering some four million acres in the southern half of the beautiful Willamette Valley, varies from the snow-capped Cascade Range and wooded mountain valleys to the numerous farms and cities on the valley floor.

Technical and cost-sharing assistance to resource development projects of this type was authorized by Congress in the Food and Agriculture Act of 1962 which assigned to the U. S. Department of Agriculture the responsibility for assisting in "developing and carrying out plans for a program of land conservation and utilization . . ." The Soil Conservation Service has been assigned leadership responsibility by the Department.



# Upper Willamette RC&D Project

## ORGANIZATION CHART



\*Soil & Water Conservation Districts

## PROJECT ORGANIZATION AND OPERATION\*

The Sponsors of the Upper Willamette Resource Conservation & Development Project have planned a program through which local community leaders can work together to develop the natural and human resources of the Project Area. This program was approved by the Secretary of Agriculture in March 1965 and the Sponsors are now actively carrying it forward.

The goals are broad and varied. To make the Valley a better place in which to live, work and play, the Sponsors have listed their major objectives as follows:

1. Reduce damages from annual flooding by development of water disposal systems and land use zoning of the flood plain.
2. Intensify the cropping systems on agricultural lands through higher levels of management and use of high value crops following an intensive program of flood prevention, drainage, irrigation, market analysis and research; divert marginal croplands to more suitable uses.
3. Develop the forest resources to a sustained yield basis on commercial woodlands in federal, state and private ownership by improved timber management, development of new wood products, improved processing facilities and expanding market outlets to provide labor opportunities and to further stabilize the economy.
4. Increase the quantity and improve the quality of recreational facilities to meet local and tourists' demands through coordination and development of private and public facilities.
5. Provide local governments with basic resource data and methods of utilizing such information in relation to Comprehensive Land Use Planning and Development.
6. Enhance and protect the visual qualities of the physical environment.
7. Improve the economic opportunities of the area by developing new job opportunities and increasing income from farms, timber, recreation and industry.

To attain these goals the Sponsors have obtained the help of many local leaders, and are also assisted by employees of federal, state and county agencies.

---

\* On February 25, 1969 the Project Sponsors adopted a Constitution and Bylaws for the Upper Willamette R&D Project (pages 24-33). This action required a revision of the Organization Chart (page 2).

The Project Sponsors are the Benton, East Linn, Linn Lane, Mid Lane, North Lane, Siuslaw and Upper Willamette Soil & Water Conservation Districts; the Benton, Lane and Linn county governments; and the State Soil & Water Conservation Committee.

The Executive Board consists of the officers elected from the Sponsors, an official representative from each of the sponsoring organizations, the chairmen of the Resource Committees, the representatives from each of the participating agencies and the Project Coordinator.

The Executive Board meets quarterly to review requests for federal cost sharing and technical assistance, to establish priorities and to conduct other Project business. At a special annual meeting the Sponsors review accomplishments, establish annual goals, elect officers and conduct other business as necessary. It is a public meeting and may be attended by Agency representatives, Resource Committee members and representatives of local groups interested in various Project Measures.

Project Measures are jobs or units of work that make up the total project plan. They may be originated by local groups, communities, municipalities, or organizations to meet a specific need. These measures are sponsored by the originating group, which takes the responsibility for planning and carrying out each measure.

Agency Representatives are those designated by approximately 37 federal, state, county and local agencies to assist in the coordination, technical assistance, cost sharing, grants and loans necessary for the completion of Project Measures.

The Project Coordinator is a staff officer assigned by the Soil Conservation Service to work full time with the Project Sponsors and the cooperating local, state and federal agencies in carrying out the authorized Project Plan.

As shown on the Organization Chart (page 2), there are seven Resource Committees--Agriculture, Countryside Beautification, Recreation, Town & Community Planning, Water Development, Wildlife and Woodland. They meet at least once a year to review over-all resource development problems and opportunities in the Project Area relating to the committees' fields of responsibility. The Chairman of each committee is appointed by the RC&D President and assisted by representatives from each of the Sponsors. Technical assistance is provided by those members appointed by the various agencies as their representatives on each committee. The Committees may also include as many interested community leaders as the members feel are needed to adequately fulfill the goals. The Resource Committees establish long range objectives and plan annual goals; this includes priorities, possible ways of attaining goals, and determining the agency or local people who will do the work.

## Agencies Represented

U. S. Department of Agriculture  
Agricultural Research Service  
Agricultural Stabilization & Conservation Service  
Cooperative Extension Service (County Extension offices)  
Economic Research Service  
Farmers Cooperative Service  
Farmers Home Administration  
Forest Service  
    Division of State & Private Forestry  
    Siushaw National Forest  
    Umpqua National Forest  
    Willamette National Forest  
Rural Electrification Administration  
Soil Conservation Service

U. S. Department of the Army  
Corps of Engineers

U. S. Department of Commerce  
Bureau of Environmental Services (Weather Bureau)

U. S. Department of the Interior  
Bureau of Land Management  
Bureau of Outdoor Recreation  
Bureau of Reclamation  
Federal Water Pollution Control Administration  
Fish & Wildlife Service  
    Bureau of Commercial Fisheries  
    Bureau of Sports Fisheries & Wildlife

State of Oregon  
Board of Health  
Department of Agriculture  
Department of Commerce  
    Economic Development Division  
Engineer  
Forestry Department  
Game Commission  
Highway Department  
    Parks & Recreation Division  
Water Resources Board

Oregon State University  
University of Oregon

Willamette Basin Project Committee

Many County departments in Benton, Lane and Linn counties, as well as city planning commissions, city councils, etc.

## AGRICULTURE COMMITTEE

Keith Crocker, Chairman

The Agriculture Committee has been charged with the responsibility of assisting in proper land use management and related problems. There are 1-1/3 million acres of soil suitable for farming in the Project Area. With the continuous growth in population and industry, realistic priorities and controls need to be established on these lands.

### LONG RANGE GOALS

1. Plan for intensified land use as a result of permanent land improvements brought about by providing flood prevention, irrigation and drainage measures.
2. Search out new crops and market outlets to make more profitable use of our improved land resources.
3. Study feasibility and help in establishment of needed agricultural processing plants.
4. Encourage adequate zoning of agricultural land.
5. Study feasibility of reusable industrial water for irrigation.
6. Promote techniques in farming to control or eliminate air and water pollution.

### IMMEDIATE GOALS

#### I. Crop Expansion

1. Evaluate local pelleting operations now underway by individual assignments of committee members.
2. Investigate new products for pellet processing and marketing.

#### II. Drainage

1. Set up field trials using bark and/or straw as backfill materials for tile drains installed on heavy soils in the RQ&D Area.
2. Set up field trials using bark and/or straw in a vertical mulch.
3. Study need of specialized machinery and techniques for the use of straw and/or bark as soil additives.

4. Support higher limitations of cost-share in and for ACP assistance in drainage work.

### III. Marketing

Meet with food processors in the area to determine and evaluate their needs and future plans of growth.

### IV. General Studies

1. Study agricultural use of industrial reusable water.
  - a. Quantity and quality of water available.
  - b. Crops and areas water will be available.
  - c. Assist local areas in the development of projects using industrial reusable water.
2. Coordinate agriculture feasibility studies with the respective departments of Oregon State University.
3. Identify areas of agricultural pollution (air, soil and water).

### V. Information

1. Sponsor the preparation and printing of a brochure explaining the need for exclusive farm zoning and the advantages and disadvantages to farmers of their inclusion in such a district.
2. Develop an informational brochure on agriculture for the RC&D Area.
3. Compile into a report information on the resources of Land, Water and People of the RC&D Area; include a general soil map.



## COUNTRYSIDE BEAUTIFICATION COMMITTEE

Ronel Paddock, Chairman

It is the policy of the Countryside Beautification Committee to provide opportunities within the Project Area to enjoy the natural surroundings and to assist in creating a more attractive and inviting environment emphasizing natural and man-made beauty.

### LONG RANGE GOALS

1. To assist communities in organizing and carrying out continuing beautification programs.
2. Encourage local, state, and federal agencies to develop roadside scenic viewpoints providing the opportunity to enjoy the natural and man-made beauty.

### ANNUAL GOALS

1. Develop a slide and tape program on beautification and litter control for use by civic clubs and groups in the Project Area.
2. Assume the responsibility of the Area Beautification Council and continue its program of sponsoring area-wide beautification contests.
3. Prepare and distribute a newsletter emphasizing progress of communities in beautification efforts. Also prepare informational bulletins outlining practical ideas for beautification projects.



## RECREATION COMMITTEE

Ben Christensen, Chairman

The abundant forests, lakes, beautiful streams, outstanding scenery, plentiful wildlife, and remote wilderness areas have made tourism and recreation one of the largest industries. To meet the demands of the future, the committee hopes to work toward a balanced recreational development program utilizing all of the resources both public and private.

### LONG RANGE GOALS

1. Strive for improvement of the quantity and quality of recreational facilities on public and private lands of the area.
2. Seek and promote increased opportunities through total resource development for recreational enjoyment on public and private lands of the Project Area.
3. Support and promote legislation that will enhance recreational development and opportunities on public and private lands.
4. Coordinate and make available technical information on recreational needs to planning groups and others in long range planning on public and private lands and waters.
5. Seek means to correct pollution which seriously effects recreational opportunities on public and private lands and waters.

### ANNUAL GOALS

1. Complete formation of Benton County Willamette River Greenway Association.
2. Complete publication of riverboat and canoeist guide books.
3. Complete and publish an interpretative brochure on the Willamette River Park (Greenway) system.
4. Continue support on the Willamette River park system.
5. Encourage a comprehensive study on the fees charged for public recreation facilities and their effect on private recreation development.
6. Encourage the development of recreational facilities for Foster Reservoir.

7. Promote the availability of recreation to people through the use of mass media.
8. Take an active part in the 1969 legislative session and support and promote legislation that will benefit outdoor recreation.

Note: A slide-tape presentation of the Willamette River has been prepared by the Committee and is available through Soil Conservation Service offices in Portland, Albany, Salem, Corvallis, Hillsboro and Eugene.



Governor McCall and other State officials make preparations for boat trip down the colorful Willamette River.

SCS PHOTO 7-2148-16

## TOWN & COMMUNITY PLANNING COMMITTEE

William F. Gwinn, Chairman

It is the policy of the Town & Community Planning Committee to encourage the proper use of our land and water resources, emphasizing the orderly growth and economic development of urban areas. In addition, the committee shall support and assist public bodies in the development of needed facilities aimed at maintaining a quality environment.

### LONG RANGE GOALS

1. Support the preparation of comprehensive land use development plans for all portions of the Project Area and encourage coordination of comprehensive planning between governmental units.
2. Assist rural communities in the identification of local needs and suggest methods and resources available in solving problems.
3. Encourage the development of a local government and environmental studies program to be included in elementary and secondary school curriculum. Such a program envisions emphasizing the responsibilities of local government in meeting environmental needs.
4. Encourage each county to incorporate a soil scientist service into their regular capabilities and encourage local governments to utilize soil, geological, water resource and other related information in the accomplishment of studies and planning projects.
5. Support the work of city, county and regional planning commissions by holding a series of workshops throughout the Project Area on the need for and advantage of planning for orderly growth.

### ANNUAL GOALS

1. Encourage the inclusion of water pollution control planning as part of city and county planning studies now underway.
2. Suggest to each of the seven Soil & Water Conservation Districts that they meet with county officials to establish priority areas needing basic soil surveys.
3. Prepare a list of resource people, including professionally qualified individuals and laymen involved in land-use planning and related fields.

4. Support the resolutions adopted by the delegates to the 43rd Annual Convention of the League of Oregon Cities regarding:
  - a. Full state and federal funding for sewer grant aids.
  - b. Creation of local government boundary boards.
  - c. Review of federal highway funding programs in Oregon.
  - d. City participation in block grant programs.
  - e. State and regional efforts to reduce air pollution.
5. Contact the State Superintendent of Public Instruction and advise him of the committee's interest in assisting in the development of a local government and environmental studies program for the elementary and secondary school curriculum. In this regard, we offer the committee's services to the public schools of the Project Area.



Planning begins with an inventory of soil resources.

SCS PHOTO 7-75310

## WATER DEVELOPMENT COMMITTEE

Paul Blazer, Chairman

The Water Development Committee has developed the following program for 1969. This program consists of water resource related activities and is in line with the policies of the Sponsors.

The responsibilities assigned to the committee are:

1. Water resource measures:
  - a. Flooding
  - b. Irrigation
  - c. Drainage
  - d. Recreation
  - e. Municipal Use
  - f. Industrial Use
2. Review the water resource program and keep projects, problems, opportunities and objectives updated.
3. Develop and carry out specific projects and programs as they are brought to the attention of the committee.

### LONG RANGE OBJECTIVES

1. Support measures that will accelerate the development or utilization of water resources to provide the maximum benefits to the Project Area's economy and people.
2. Undertake and support groups in publicizing and informing the public of opportunities for utilization of the available water resources.
3. Support measures that will produce or lead to a reduction in water pollution, thereby, improving the environment for aquatic habitation.
4. Encourage irrigation project development by interested groups. Support and assist these interested groups in complying with state and federal laws. Support these groups in developing adequate programs and plans.
5. Encourage, support and undertake development of upstream storage, particularly in the Coast Range.
6. Support, encourage and provide informational assistance on the formation of appropriate legal organizations that will assure adequate operation and maintenance of completed projects.



7. Encourage early planning of Measures that will provide for maximum water resource development.
8. Support, encourage and provide assistance to state, county and local agencies in developing ways to preserve potential reservoir sites and project them against highly intense development.

#### ANNUAL GOALS

1. Submit a resolution to the Willamette Basin Task Force supporting an early approval of the Task Force's report concerning recommendations in resource development.
2. Prepare a resolution requesting that congressional approval be given for blanket planning authorization of the Small Watershed Projects proposed in the Willamette Basin Task Force report.
3. Establish an association of water control and other special interest districts dealing with water development in the RQ&D Area.
4. Request that SCS, Oregon Cooperative Extension Service, the Economic Research Service and other agencies compile more up-to-date and better cost-return data for irrigated pasture enterprises within the RQ&D Area.
5. Determine the location of dumped car bodies or of car body revetments and bring their location to the attention of the Countryside Beautification Committee. This will be done in cooperation with the local Soil & Water Conservation Districts.
6. Cooperate with the Countryside Beautification Committee in reviewing all such car body locations and determine whether, technically and esthetically, they should be removed.
7. Support the nuclear power project and connected irrigation developments by recommending cooperating agencies supply EWEB and their consultants with basic data pertaining to soils, hydrology, irrigation, flooding and drainage.
8. Recommend that a resolution be prepared to the congressional delegation supporting removal of the 160 acre limitation on irrigation water sold by the Bureau of Reclamation.
9. Recommend to the RQ&D Area legislators that their support be given to adjudication of the waters of Oregon.
10. Support the 1969 water development Project Measures of the Upper Willamette RQ&D as listed on page 21, 22 and 23.

## WILDLIFE COMMITTEE

Gareld Banta, Chairman

The Wildlife Committee has been charged with the responsibility of seeking means for promoting and improving the valuable fish and wildlife resources in the Project Area. Important considerations include habitat improvement, farmer-sportsman relationships, improved access and pollution abatement.

### LONG RANGE GOALS

1. Support measures that will contribute to the wise use of the fish and wildlife resources.
2. Awaken the awareness of the general public to the values that fish and wildlife make in everyday living and encourage owners and managers of wildlife-producing lands to make sound management decisions. Two areas that need attention in the RC&D Area today are: Water pollution in the Willamette River and its tributaries, and vanishing pheasant habitat in the Upper Willamette Valley.
3. Take steps to inform and enlist the support of all groups on wildlife developments by compiling and publishing resource data, tours, demonstrations and news releases, etc.
4. Encourage and support private hunting and fishing developments which enhance and enlarge the wildlife resource in contrast to those which restrict or isolate the resource for private use.
5. Propose and promote the inclusion of a coordinator of Resource Conservation Education in public schools in the office of the State Superintendent of Schools, and the addition of a course in Resource Conservation to the curriculum of public schools in the state of Oregon.
6. Promote and support legislation to strengthen laws which provide for maintenance and enhancement of the fish and wildlife resources.
7. Work toward better understanding between the sportsman and the landowner.

### ANNUAL GOALS

1. Continue support of the Oregon State Game Commission in their wood duck nest program by building nests, locating nesting sites, putting up nests and working with cub scouts on this program.

2. Promote the development of a winter boat launching site on Fern Ridge Reservoir, either at Orchard Point or Zumwalt Park sites.
3. Encourage completion of fish passage facilities at Oregon City Falls on the Willamette.
4. Encourage the end of DDT use because of the detrimental effects on native wildlife species.
5. Support the Oregon State Game Commission in their program to encourage planting of sudan and other foods for wildlife habitat.



## WOODLAND COMMITTEE

Robert G. Kintigh, Chairman

Approximately 80% of the Project Area is in forests and woodland. Intensive management of this land is essential to full resource development and, in turn, to the economy of the area. Since timber is a long time crop, the future timber economy is dependent on today's management. These lands are in several classes of ownership, both private and public, each of which has specific management objectives and problems.

The policy of the committee shall be to promote forest management practices which will:

- a. Minimize soil disturbance;
- b. Maintain or improve the quality and quantity of available water;
- c. Reduce pollution of air, water, soil and any other factors which would contribute to the deterioration of the environment.

### LONG RANGE OBJECTIVES

1. Support measures that will contribute to the acceleration of the development of the forest lands, to the end that forest lands produce their fair share of benefits to the over-all economy, on all forest land in all ownerships by whatever means are available.
2. Awaken the awareness of owners and managers to the potential values and productiveness of their forest lands, and encourage them to make sound land use decisions. Management features needing acceleration include proper treatment of young stands, orderly harvesting, and reforestation of understocked areas.
3. Take steps to inform and enlist the support of all groups in the area leading to the understanding of the development of the resource by compiling and publishing resource data, tours, demonstrations, news releases, etc.
4. Support close coordination of agencies assisting woodland owners. Owners should be encouraged to develop their individual conservation and development plans for their ownership. Coordinate technical assistance to the owner in assisting him in carrying out his plan.
5. Development of additional markets to utilize all of the materials not now saleable that can be harvested from forest lands.

Investigate such things as concentration yards, central location of chipping facilities, and special studies leading to improvement of specific markets, raw materials inventory, capital investment and costs of harvesting and manufacture.

6. Increase forest management and marketing assistance to small woodland owner class who generally need such facilities.
7. Develop and keep current forest resource statistics in sufficient detail to meet the need for development of this project, and make this information available to woodland owners and processors.
8. Investigate need and seek out interest in cooperative management and marketing.
9. Accelerate soil surveys useful for the intensification of forest management and as a basis for making sound land use decisions.
10. Encourage forest resource agencies to study soil-plant nutrient relationships for raising production levels of forest lands. Such studies may also find useful data about specific Christmas tree growing problems.
11. Encourage the availability of specialized equipment on a pilot basis.
12. Encourage development of suitable recreational sites to assist landowners in recognizing these possibilities as a means to supplement forest land income.
13. Support adequate funding for soil surveys, stand improvement measures, land treatment, and recreational projects on public lands.
14. Promote tree farm certification, woodland owner associations, 1,000 board ft. clubs, and 1/4 century tree farms to encourage growers to adopt better tree cropping systems.
15. It is recognized that services of consulting foresters are needed to get the total job done, particularly in the field of marketing and management. Encourage landowners to use these services to the fullest extent.
16. Complete a survey to determine the acreage of non-productive brush land.

#### IMMEDIATE GOALS

1. Compile a list of all:
  - a. Interested Woodland owners with a 10 acre minimum in woodland (Christmas tree and timber growers);

- b. Contract loggers (including horse loggers);
  - c. Update the "Wood-using Industries of the Upper Willamette RQ&D Project Area" -- a utilization report and directory, and include chipping information.
- 2. Continue inventory of hardwoods, including volume and species available.
- 3. Promote small roundwood products, bark utilization and minor species. Expand bark utilization in Benton and Linn counties.
- 4. Compile and make available a catalog showing various equipment used by tree farmers for:
  - a. Logging - tractors (wheel and crawler type), power saws, etc.
  - b. Chemical control of brush, undesirable trees, etc.
  - c. Christmas tree production.
- 5. Compile a list of contractors who would be available for custom work on tree farms - tree planting, thinning, brush control, etc.; cost-return information; laws regarding hiring of minors and fire responsibilities.
- 6. Encourage and support action for more practical trespass laws, including animal trespass, and work on the problem.
- 7. Soil surveys be completed on all woodland in the Project Area --public and private. This year the committee proposes to:
  - a. Recommend that the Forest Service readjust their soil survey scheduling operations so that the field work will begin in the Siuslaw, Umpqua and Willamette National Forests in the Project Area before completion date of the standard soil survey as carried on by the Soil Conservation Service.
  - b. That BLM renegotiate its contract with the Soil Conservation Service to provide for soil surveys in those areas added by Amendment since the original Project Plan was developed.
  - c. That individual firms be contacted and encouraged to contribute funds or personnel to the soil survey program in the Project Area.
- 8. Develop Woodland Committee activities by co-sponsoring at least two annual tours, demonstrations, etc.
  - a. A woodland soils tour;
  - b. An equipment demonstration.



## RESOURCE BOOKLETS & STUDIES

Listed below are booklets and studies containing information on the use of the Project Area's resources. Some have received funding from RC&D, others were budgeted by the various counties and all contain significant information pertinent to the goals of the Resource Committees. Where indicated, the booklets are available from the Agency developing the material, or at the office of the Project Coordinator, 954 13th Avenue West, Eugene, Oregon 97402.

### Benton County

"An Appraisal of Potentials for Outdoor Recreational Development, Benton County, Oregon" --Available summer of 1969.

### Lane County

1. "An Appraisal of Potentials for Outdoor Recreational Development, Lane County, Oregon" --Available summer of 1969.
2. "Planning for Tomorrow in Lane County" --Available after July 1969 from the Lane Cooperative Extension Service.
3. "Boaters & Canoeist Guide Book" --Dexter to Springfield, #1  
--Springfield to Harrisburg, #2  
--Harrisburg to Albany, #3

### Linn County

1. "An Appraisal of Potentials for Outdoor Recreational Development, Linn County, Oregon" --Available.
2. "Planning for Tomorrow in Linn County" --Limited supply available from the Linn Cooperative Extension Service.
3. "Food Processing Opportunities--Harrisburg, Oregon" --Limited supply available from the Pacific Power & Light Co., Portland.

The following material was compiled by the State of Oregon Forestry Department, 3150 Main Street, Springfield, Oregon 97477.

1. "Forest Statistics for the Upper Willamette Resource Conservation & Development Program" . . . . . June 1966
2. "Wood-using Industries of the Upper Willamette RC&D Project Area" --a utilization report and directory . . . . . December 1966
3. "Small Roundwood Products in the State of Oregon" --summary of production and treatment facilities available . . . . . September 1967
4. "A Directory of Bark Producers and Facilities in Benton, Lane and Linn counties" . . . . . March 1968
5. "Post Driving Demonstration--Crow High School". . . . . June 1968
6. "List of Log Truck Haulers for Small Woodland Owners." August 1968
7. "The Market for Fireplace Wood in the Eugene Area" --study . . . . . February 1967
8. "Bark for Agricultural Uses" --study . . . . . March 1967
9. "Market for Wood Pallets" --report . . . . . December 1968
10. "List of Contract Tree Planters" . . . . . February 1969

Scheduled for publication at the beginning of the new fiscal year is the "RC&D Resource Booklet" --significant resource data on RC&D Project Area, including general soil map with interpretations.

## 1969 RESOURCE GOALS

in the

RC&D Project Area

<u>SWCD</u>	<u>Name</u>	<u>1969 Goal</u>
Benton	Monroe, City of	Complete preliminary engineering study on flood water problems.
	Philomath, City of	Complete preliminary engineering study on flood water problems.
East Linn	Conservative Baptists Assn. Camp	Complete installation of proposed dam.
	Grand Prairie PL 566	Request authorization for construction.
	Lacomb Irrigation	Complete preliminary study of 2nd stage of operation.
	Little Oak Flood Pro.	Complete construction and seeding.
	McDowell Creek Falls Pk.	Complete initial development.
	Periwinkle Creek	Prepare reconnaissance report; publish preliminary report.
	Roaring River-Thomas Creek Park	Complete in 1969 by Linn County Parks & Recreation Dept.
	San Thomas	Construct 2 miles of channel with ACP funds.
Linn Lane	Brownsville Canal & Dam	Complete construction of entire Project.
	Christensen's Boat Landing	Complete review of land status.
	Coburg, City of	Move toward development of adequate domestic water and sewage treatment systems.
	East Muddy Creek Irrigation	Complete plans for diversion of McKenzie River water.
	East Muddy Creek PL 566	Work with local people on watershed application and obtain Governor's and SCS approval of application.

1969 Resource Goals (continued)

<u>SWCD</u>	<u>Name</u>	<u>1969 Goal</u>
Linn Lane	Harrisburg, City of	Begin preliminary study of surface water problems.
	Little Muddy Creek Flood Prevention	Complete construction and seeding on 1st stage. Complete design and begin construction 2nd stage.
	Sweet Home, City of	Prepare soil survey of city and area. Assist in community attitude survey for city.
Mid Lane	Central Area Irrigation & Domestic Water	Complete survey of local interest by Mid Lane and Coyote-Spencer Water Control Districts for domestic and irrigation needs.
	Coyote-Spencer PL 566	Obtain planning authorization. Call attention to the problems on Spencer Creek.
	Fern Ridge Irrigation (also North Lane SWCD)	Complete design.
	Huston Road	Complete preliminary report and begin project design.
	Peaceful Valley	Meet with local people regarding vegetative measures to be taken.
	Veneta, City of	Obtain FHA-RC&D loan for recreation development and work with the city on sewage needs.
North Lane	Ferguson Creek	Complete an irrigation interest survey.
	Hulbert Lake	Complete construction.
	Lower Amazon-Flat Creek PL 566	Complete Channel A construction first 1.3 miles; begin construction on three other sections.
	River Road Flood Prevention	Complete construction and seeding.
	Walton Slough	Initiate a preliminary study.

# 1969 Resource Goals (continued)

<u>SWCD</u>	<u>Name</u>	<u>1969 Goal</u>
Upper Willamette	Dearborn Island Flood Prevention	Complete preliminary report.
	Hendricks Road Irrigation	Complete Construction.
	Lower Benter & Stafford Revetments	Assist Corps and local people in preliminary report.
	Oakridge Flood Prevention	Approve preliminary report and schedule construction.
	Willakenzie PL 566	Complete Springfield portion when city obtains easements.
Project- wide	Flood Plain Studies	<u>Benton County</u> --Obtain study authorization. <u>Lane County</u> --Complete survey on two priority areas and obtain new priority areas from the County for 1970 work. <u>Linn County</u> --Same as Benton.
	Mahlon Sweet Airport	Complete over-all drainage study.
	Sewer & Water Studies	<u>Benton County</u> --Complete a co-operative agreement with federal agencies to begin study. <u>Lane County</u> --Begin 1st stage of study. <u>Linn County</u> --Complete programs conducted by FHA and HUD.
	Valley Irrigation	Establish an organization to guide over-all development.

# CONSTITUTION

## ARTICLE I

### Name

- Section 1. This organization shall be called the Upper Willamette Resource Conservation & Development Project. It may be designated as the Upper Willamette RQ&D Project.
- Section 2. The organization is an independent, non-profit, nonpartisan, unincorporated group having as its primary concern the acceleration of the conservation, development, and proper use of the resources within the Resource Conservation and Development Project.
- Section 3. The fiscal year of the Upper Willamette RQ&D Project shall commence on the 1st day of January and end on the 31st day of December.

## ARTICLE II

### Boundaries

- Section 1. The Project Area occupies the southern half of the Willamette Basin and lies between the crests of the Coast Range on the West and the Cascade Range on the east.\*
- Section 2. The Project boundaries include all of the East Linn, Linn Lane, North Lane and 3/4 of the Benton, Mid Lane and Upper Willamette Soil & Water Conservation Districts.\*

## ARTICLE III

### Purpose

This long range action program was initiated and is directed by local people for the orderly and systematic conservation, development and utilization of the soil, water, timber, recreation and human resources in the Project Area. The major objectives are to:

1. Reduce damages from annual flooding by development of water disposal systems and land use zoning of the flood plain.

---

\* Sections 1 and 2 will be amended when the Secretary of Agriculture approves the change made by the Sponsors on February 25, 1969 to include the Siuslaw SWCD and revise the project boundaries to follow county lines.

2. Intensify the cropping systems on agricultural lands through higher levels of management and use of high value crops following an intensive program of flood prevention, drainage, irrigation and market analysis and research; divert marginal croplands to more suitable uses.
3. Develop the forest resources to a sustained yield basis on commercial woodlands in federal, state and private ownership by improved timber management, development of new wood products, improved processing facilities and expanding market outlets to provide labor opportunities and further stabilize the economy.
4. Increase the quantity and improve the quality of recreational facilities to meet local and tourists' demands through coordination and development of private and public facilities.
5. Provide local governments with basic resource data and methods of utilizing such information in relation to Comprehensive Land Use Planning and Development.
6. Enhance and protect the visual qualities of the physical environment.
7. Improve the economic opportunities of the area by developing new job opportunities and increasing income from farms, timber, recreation and industry.

#### ARTICLE IV

##### Powers

The powers of the Upper Willamette Resource Conservation & Development Project are restricted to its purpose as stated in Article III of this Constitution. Legal authority needed to carry out certain project measures are those included in Oregon Revised Statutes governing Soil & Water Conservation Districts, the County Governments, the State Soil & Water Conservation Committee, and other legally organized bodies located in the community in which the project measure is located.

#### ARTICLE V

##### Membership

The membership shall consist of:

\*Project Sponsors - Representatives of the Benton, East Linn, Linn Lane, Mid Lane, North Lane and Upper Willamette

---

\* See note on page 3.



Soil & Water Conservation Districts; the Benton, Lane and Linn County Governments; and the State Soil & Water Conservation Committee.

Agency

Representatives - Designated representatives of approximately 37 federal, state, county and local agencies who assist in the coordination, technical assistance, cost sharing, grants and loans necessary for the completion of Project Measures.

Local Citizens - People in the three-county area interested in assisting in the over-all resource development for the Project Area.

ARTICLE VI

Officers

Section 1. The officers of the Upper Willamette RC&D Project shall be the President, Vice President, Secretary, Treasurer and Project Coordinator.

Section 2. The officers (President, Vice President, Secretary and Treasurer) shall be elected at the annual meeting in January for a term of one year or until their replacements have been elected.

Section 3. The office of Project Coordinator is non-elective. He is a staff officer assigned by the Soil Conservation Service to work full time with the Project Sponsors and the cooperating local, state and federal agencies in carrying out the authorized Project Plan.

ARTICLE VII

Organization

The organization of the Upper Willamette RC&D Project shall be as follows:

Executive Board - Shall consist of the officers and two representatives from each of the sponsoring Soil & Water Conservation Districts, one representative from each of the County Governments, and one representative from the State Soil & Water Conservation Committee. They shall manage the affairs and business of the Project.

Section 1. Such Board Members shall serve for the ensuing year or until their successors have been elected and qualified.

Section 2. The Executive Board will give guidance, direction and coordination to the Project. The Executive Board shall review and develop the annual Work Plan as recommended by the Resource Committees.

Section 3. Ex officio members of the Executive Board shall be the designated representatives of the cooperating federal, state, county and local agencies, the Resource Committee Chairmen and the Project Coordinator.

Resource Committees - There shall be seven Resource Committees (Agriculture, Countryside Beautification, Recreation, Town & Community Planning, Water Development, Wildlife, and Woodland), consisting of representatives from the Project Sponsors, Agency Representatives and local citizens interested in resource development and conservation. Each Committee shall meet at least once a year to review over-all resource development problems and opportunities in the Project Area relating to the committee's field of responsibility (long range objectives), and to plan an annual work program or annual goals aimed at the solution of the problems or the development of the opportunities.

Section 1. The Chairmen will be appointed by the President and shall serve throughout the President's term of office. In case of death or resignation a new Chairman will be appointed for the remainder of the term.

Section 2. The Chairman of each Committee may appoint such officers as he feels are necessary to conduct the affairs of the Committee.

Section 3. The Chairman will be assisted in his duties by the Executive Secretary.

Section 4. The Executive Secretary is an RC&D staff member assigned to aid in the work of the Resource Committee.

## ARTICLE VIII

### Meetings

Section 1. The Project Sponsors shall meet annually in January to review accomplishments, establish annual goals, elect officers and conduct other business as necessary.

Section 1a. This shall be a public meeting and it is expected that Agency Representatives and Resource Committee members will attend.

Section 2. The Executive Board shall meet quarterly to review requests for technical assistance, Federal cost-sharing, establish priorities, and generally promote the affairs of the Project.

Section 2a. Agency Representatives and local citizens may attend the Executive Board quarterly meetings if the agenda indicates business that will be of interest to them.

Section 2b. Special meetings of the Executive Board shall be called by the President whenever he deems them necessary or whenever he is called upon to do so by a majority of the Board.

Section 3. The Resource Committees shall meet at least once annually and whenever the Chairman and Executive Secretary of each Committee feel there is a need to conduct the business necessary to accomplish their goals.

## ARTICLE IX

### Project Measures

The Project Measures are plans needed and proposed by local interest groups, individuals, Project Sponsors or Resource Committees for the orderly conservation, development, improvement and utilization of resources of the Project Area. They include structural measures, land use and treatment, associated measures and supporting measures.

Structural Measures are construction projects designed to serve a community need, such as dams for irrigation or flood control, canal systems for irrigation, channels for drainage and flood control.

Land use and treatment are needed land use adjustments and combinations of practices compatible with the needs and capabilities of the land and the objectives of the people involved.

Associated Measures are facilities, activities, or enterprises necessary for the utilization, processing, and marketing of natural resource products.

Supporting Measures are developments or enterprises compatible with project objectives.

## ARTICLE X

### Work Plan

An Annual Work Plan will be prepared that will include the objectives, goals and plans of the Executive Board and each of the Resource

Committees. This Work Plan will also include a listing of the cooperating federal, state, county and local cooperating organizations.

## ARTICLE XI

### Amendment

Any proposed amendment to this Constitution may be submitted in writing at any regular meeting of the Executive Board. Such proposed amendment must be signed by a representative of each of the Sponsors and shall be read to the meeting by the Secretary after it has been sent to each of the Sponsors by mail. The President shall then declare the Amendment to be adopted.

# BYLAWS

## I. Membership

There shall be three classes of membership:

- SPONSORING      The Sponsors have full participation in all the deliberations and activities of the organization.
- COOPERATING      The Agency Representative may attend meetings, participate in discussions and assist in coordinating the RC&D Program with his agency's program, provide technical assistance, aid in cost sharing, and help obtain grants and loans. He will have no vote and can hold no office on the Executive Board, but may vote on decisions made by the Resource Committee to which he belongs.
- SUPPORTING      The Local Citizen may attend meetings, listen to and participate in discussions and activities of the Resource Committees. He may vote on decisions made by the Resource Committee to which he belongs, but can have no vote and can hold no office on the Executive Board.

## II. Operating Funds

- Section 1.      The Executive Board shall estimate the amount of monies needed each year to purchase stationery, pay postage and buy needed material for the organization.
- Section 2.      Each of the sponsoring organizations, namely, SWCD's, County Governments and the State Soil & Water Conservation Committee will be asked by the Executive Board to contribute to the operating fund to the extent needed and their resources will permit.
- Section 3.      Gifts may be accepted by the Executive Board.

## III. Duties of Officers

- Section 1.      President - The President shall be the chief executive of the organization, charged with the duty of supervising all of its functions, subject to the orders of the Executive Board.
- Section 1a.      The President shall appoint the Chairmen of the Resource Committees to serve throughout the President's term of office.

Section 1b. He shall be an ex officio member of all committees.

Section 1c. He shall meet twice yearly with his officers, Resource Committee Chairmen, Project Coordinator, and Executive Secretaries of the Resource Committees to coordinate, set priorities, determine emphasis, ways of doing the job, goals, direction of program and to plan the annual meeting.

Section 2. Vice President - In the President's absence or in the event of his inability to act, the Vice President shall perform the duties of the President. He shall also perform such other functions as the Executive Board may from time to time assign.

Section 3. Secretary - The Secretary shall conduct the correspondence of the organization, issue notices of and keep minutes of all meetings of the Upper Willamette RQ&D Project, be custodian of the records, keep the roll of all members and discharge such other duties as may be assigned to him by the Executive Board or the President.

Section 4. Treasurer - The Treasurer shall collect all assessments that may be imposed on the Sponsors, and shall have the care and custody of all the funds, which shall be disbursed by him only upon the order of the Executive Board or the President.

Section 4a. He shall submit a report for the preceding year at the annual meeting and shall render special reports whenever requested to do so by the Executive Board.

Section 4b. He shall deposit all funds in the name of the organization in such bank as may be designated by the Executive Board, and shall establish a checking account so all disbursements must have the joint signature of the President and the Treasurer.

Section 5. Should any vacancy occur by death, resignation or otherwise, the office shall be filled without undue delay by the Executive Board to serve until the next annual meeting.

#### IV. Committees

Section 1. The Standing Committees are the seven Resource Committees as established by the Sponsors, and shall be as follows: Agriculture, Countryside Beautification, Recreation, Town & Community Planning, Water Development, Wildlife and Woodland.

Section 1a. The Resource Committees' duties are:

- (1) Review Program Plan as it relates to Committee's responsibility;
- (2) Review current needs and problems of Project Area as they relate to Committee's field of responsibility;
- (3) Establish long range objectives of the Committee;
- (4) Prepare an annual plan of work for approval by the Executive Board at the annual meeting;
- (5) Take necessary action to carry out the approved work plan by:
  - (a) Holding special and regular meetings;
  - (b) Assignment of specific duties to Committee members;
  - (c) Preparing correspondence to agencies and others who may take needed action;
  - (d) Establishing ad hoc committees, the members of which may not be on the Resource Committee.
- (6) Report accomplishments at the annual meeting.

Section 2. Special Committees shall be designated and appointed by the President or Chairmen of the Resource Committees, as may be required, to make studies and carry out needed Project Measures.

#### V. Quorum

Fifty (50) percent representation of the Sponsors shall constitute a quorum for the transaction of business.

#### VI. Order of Business

The Order of Business at all Executive Board meetings shall be as follows:

Call to Order  
Reading of Minutes  
Treasurer's Report



Communications  
Report of the Project Coordinator  
Report on Projects by the SWCD Representative  
Report of the Agencies  
Reports of Special Committees and Resource Committees  
Unfinished Business  
New Business  
Program  
Adjournment

#### VII. Parliamentary Authority

Robert's Rules of Order, Revised, shall be the parliamentary authority for this organization.

#### VIII. Amendment

The Bylaws of this organization may be amended or revised by the Executive Board at any time or by the affirmative vote of at least two-thirds ( $2/3$ ) of the Sponsoring members present at the annual meeting of the Executive Board or at any quarterly Executive Board meeting, or special meeting, provided that the notice of any such meeting contains a summary of the proposed amendment or amendments. Such notice to be mailed to Sponsors at least thirty (30) days before the time set for the meeting.