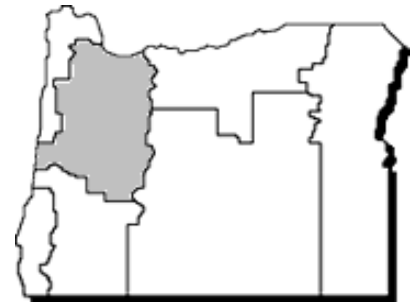


Commodity Data Sheet

Hazelnuts



Commodity number-year: 5150-07*

Extension Economic Information Office
Oregon State University
219 Ballard Extension Hall
Corvallis, OR 97331-3601 (541) 737-1436

April 2008

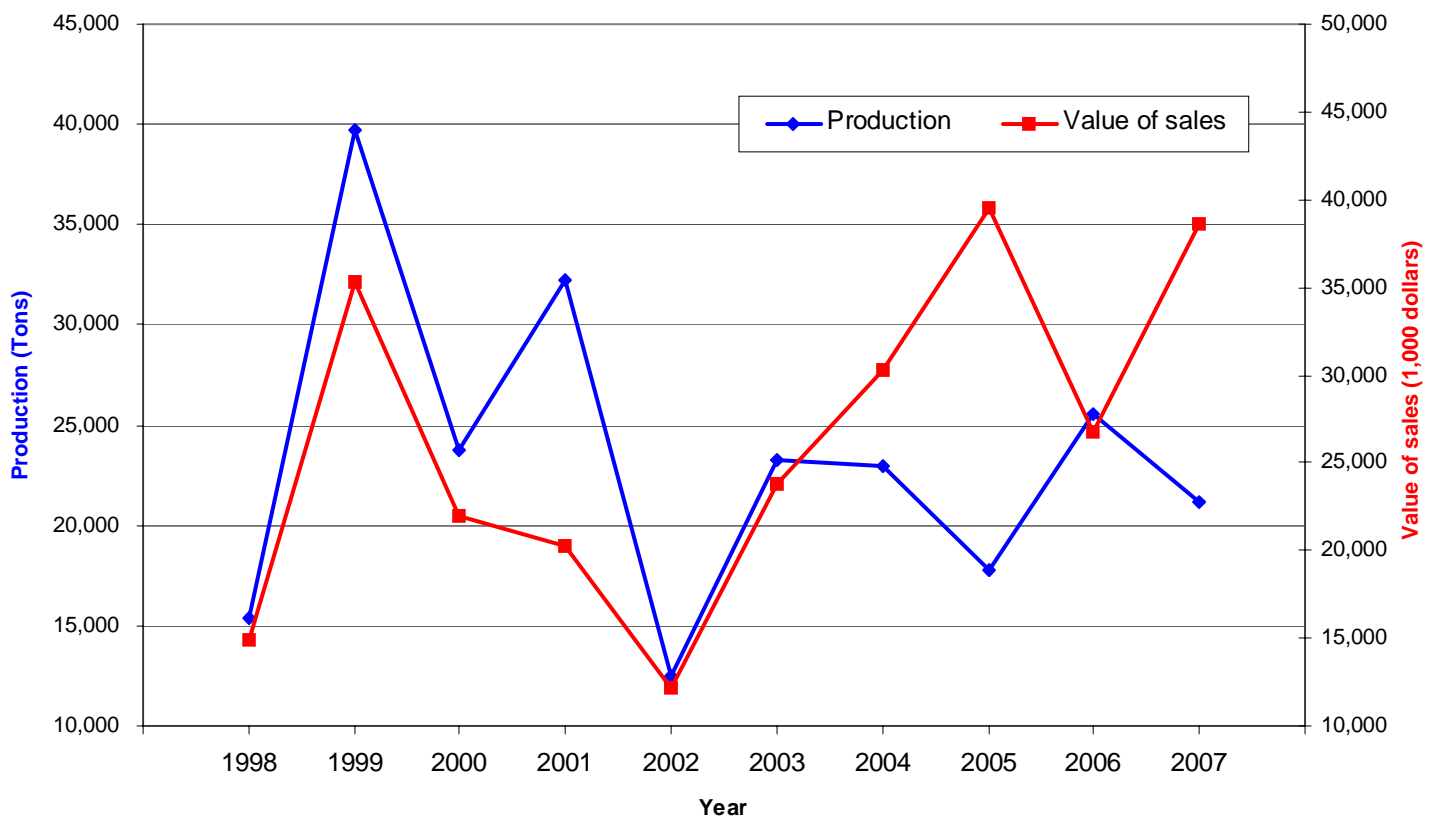
Item and area	Unit	2003	2004	2005	2006	2007
Oregon						
Bearing acreage	<i>Acres</i>	28,000	28,400	28,300	28,200	28,100
Yield per acre (in-shell basis)	<i>Tons</i>	1.35	1.32	0.98	1.52	1.28
Production (in-shell basis)	<i>Tons</i>	37,900	37,500	27,600	43,000	36,000
Utilization of sales:						
Sold in shell	<i>Tons</i>	22,100	22,000	14,600	24,000	1/
Sold shelled	<i>Tons</i>	15,800	15,500	13,000	19,000	1/
Shelled meats produced	<i>Tons</i>	6,300	5,900	4,900	8,200	1/
Farm price	<i>Dollars/ton</i>	1,030.00	1,440.00	2,240.00	1,080.00	1,820.00
Value of utilized production	<i>1,000 dollars</i>	39,037	54,000	61,824	46,440	65,520

*Shaded areas of map represent the major areas of production for this commodity. 1/ Estimates for 2007 will be published on July 8, 2008, at <http://www.nass.usda.gov/>.

Source: USDA/NASS (National Agricultural Statistics Service)

Electronic access to this publication is available at: <http://oregonstate.edu/oain/>. Click the Commodity Data Sheets button.

Hazelnuts: Production and value of sales, Oregon, 1998-2007



Source: Oregon Agricultural Information Network (OAIN), Extension Economic Information Office, Oregon State University

Hazelnuts: Acreage, yield, production and value of sales, by county, Oregon, 2005-2007

County	Bearing acreage			Yield per acre		
	2005r	2006r	2007p	2005r	2006r	2007p
	<i>Acres</i>	<i>Acres</i>	<i>Acres</i>	<i>Pounds</i>	<i>Pounds</i>	<i>Pounds</i>
Benton	400	400	450	1,750	2,200	2,300
Clackamas	3,830	3,830	3,830	1,350	2,010	1,550
Douglas	112	120	125	2,050	2,500	2,000
Lane	3,300	3,350	3,400	1,750	2,250	2,300
Linn	1,500	1,550	1,650	1,850	2,200	2,000
Marion	5,800	5,800	5,800	1,040	1,550	1,190
Multnomah	45	45	45	1,370	2,060	1,570
Polk	2,340	2,340	2,340	1,020	1,520	1,200
Washington	4,610	4,610	4,610	1,360	2,030	1,560
Yamhill	6,350	6,350	6,350	980	1,460	1,120
State total	28,287	28,395	28,600	1,260	1,800	1,480

County	Total production			Value of sales ^{1/}		
	2005r	2006r	2007p	2005r	2006r	2007p
	<i>Tons</i>	<i>Tons</i>	<i>Tons</i>	<i>1,000 dollars</i>	<i>1,000 dollars</i>	<i>1,000 dollars</i>
Benton	350	440	518	700	458	984
Clackamas	2,585	3,849	2,968	5,946	4,003	5,342
Douglas	115	150	125	218	285	212
Lane	2,888	3,769	3,910	5,776	3,920	7,273
Linn	1,388	1,705	1,650	2,776	1,773	3,069
Marion	3,016	4,495	3,451	6,937	4,675	6,212
Multnomah	31	46	35	71	48	63
Polk	1,193	1,778	1,404	2,744	1,849	2,527
Washington	3,135	4,679	3,596	7,210	4,866	6,473
Yamhill	3,112	4,636	3,556	7,158	4,821	6,401
State total	17,813	25,547	21,213	39,536	26,698	38,556

r - revised, p - preliminary. 1/ Totals may not add due to rounding. The Extension Economic Information Office uses different methods than USDA/NASS to set these estimates.

Source: Oregon Agricultural Information Network (OAIN), Extension Economic Information Office, Oregon State University