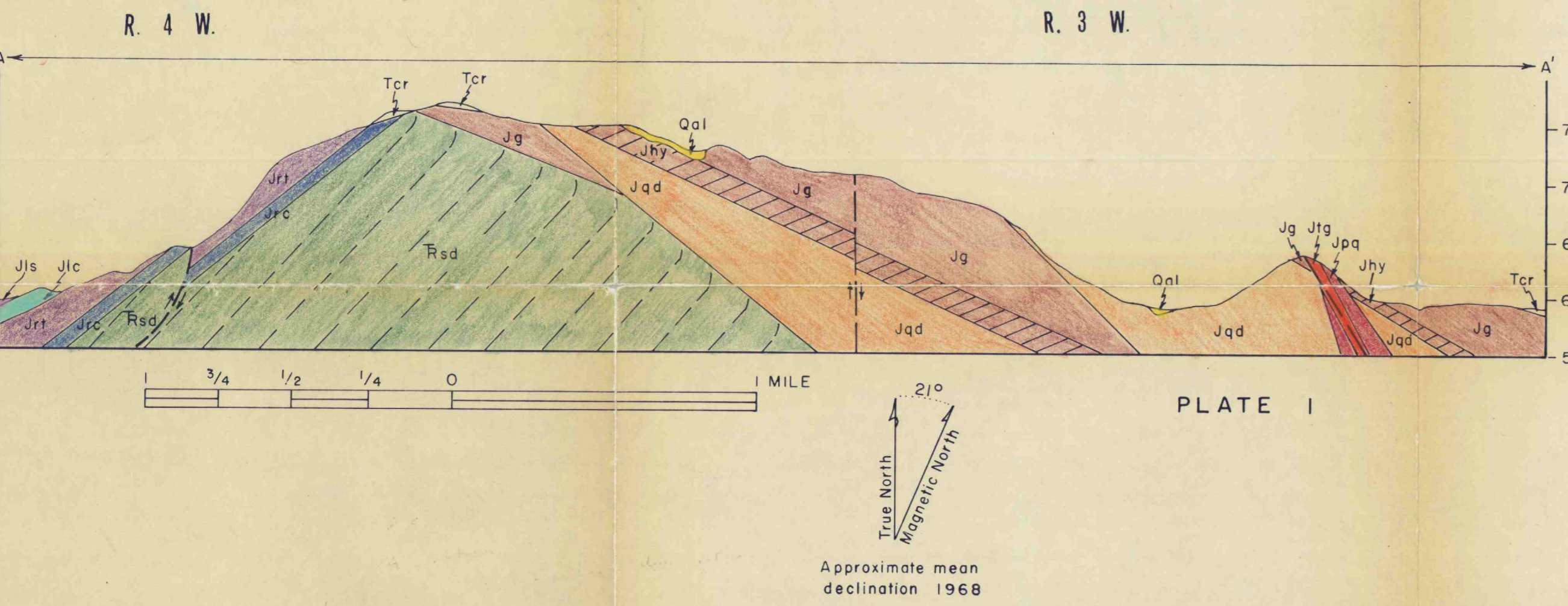


EXPLANATION

QUATERNARY	Qal	Alluvium	Unconsolidated river sediments.
TERTIARY	Tcr	Columbia River Basalt	Finely porphyritic, equigranular, and amygdaloidal basalt flows, Yakima type.
	Tib	Intrusive Basalt	Feeder dikes and plugs of Columbia River Basalt.
	JUNCONFORMITY		
EARLY JURASSIC	Jtg	Tourmaline Granite Breccia	Clasts, predominately porphyritic granodiorite, in a matrix of tourmaline, iron oxide, quartz, and orthoclase; abundant secondary orthoclase.
	Js	Silicic Dikes	Narrow, granitic to granodioritic, generally aplitic dikes.
	Jm	Mafic Dikes	Porphyritic to equigranular mafic dikes.
	Jpg	Porphyritic Granodiorite	Phenocrysts of quartz, plagioclase, and occasionally hornblende, biotite, and orthoclase set in a fine-grained groundmass of quartz and feldspar.
	Jqd	Quartz Diorite	Hypidiomorphic granular with quartz, plagioclase, hornblende, biotite, and minor orthoclase.
	Jhy	Gabbro	Hypidiomorphic granular. Gabbro (Jg) with plagioclase, augite, hypersthene, hornblende, and minor biotite; quartz <10%. Hybrid gabbro (Jhy) with quartz >10% and plagioclase >A50.
	JUNCONFORMITY		
	Jls	Lucile Series	Predominately dark slates and phyllites (Jls) with interbedded schistose sandstones and conglomerates (Jlc) and limestones.
	Jrc	Red Conglomerate	Pebble to boulder conglomerate with interbedded sandstones and slates; clasts of extrusive, intrusive and sedimentary rocks.
	Jrj	Porphyritic Rhyolite Tuff	Phenocrysts of feldspar (dominately perthite) and quartz in an aphanitic groundmass of quartz and sanidine; remnant pyroclastic texture. Gradational from rhyolitic (bottom) to andesitic (top).
LATE TRIASSIC	JUNCONFORMITY		
	Rsd	Seven Devils Volcanics	Complex assemblage of interbedded metavolcanic and volcaniclastic metasedimentary rocks.

MAP SYMBOLS

- Contact: dashed where approximately located.
- Fault: U on upthrown side, D on downthrown side. Dashed where approximately located.
- Line of structural cross section.
- Strike and dip of strata.
- Adit.



GEOLOGIC MAP OF NORTHEASTERN CUDDY MOUNTAIN, WESTERN IDAHO

By
Wayne R. Bruce
Oregon State University
1970